



# MINT TRAIL

MIDDLETOWN TWP. DELAWARE COUNTY

John McMullan, Township  
Manager

Jennifer Maull, Dir. Of Parks and  
Rec

# Introduction

• In 2018, Middletown Township established a Transit Revitalization Investment District (TRID) to stimulate desired TOD development that would be adjacent to the future Wawa Train Station. The Township adopted a Project Plan to implement this TRID District and received grant funding from the Commonwealth of Pennsylvania to further enhance the benefits of this TRID District. Trail development is the main enhancement the Township is undertaking, with the Mint Trail Development, Segment No. 1, as the first stage.

## Middletown Township Transit Revitalization Investment District Project Plan Update--2023

Prepared for Middletown Township, Delaware County, PA

By: **URBAN PARTNERS**

### 1. Introduction

Consistent with Transit-Oriented Development (TOD) principles promoted throughout the Commonwealth of Pennsylvania, the Southeastern Pennsylvania Transportation Authority (SEPTA) is extending the Media/Elwyn regional rail line to Wawa, PA (situated within Middletown Township, Delaware County), and constructing a large new station with a 600+ car parking garage at this location (see Figure 1).

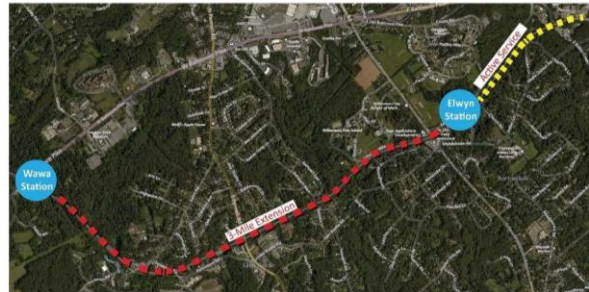


Figure 1. SEPTA Rail Extension to Wawa

In 2018, Middletown Township established near this new facility a Transit Revitalization Investment District (TRID) to stimulate the desired TOD development. The Township adopted a Project Plan to implement this TRID District and received grant funding from the Commonwealth of Pennsylvania to further enhance the benefits of this TRID District.

This current document updates conditions in the TRID area since 2018 and modifies the Project Plan to reflect these updated conditions.



Legend

**Walking & Hiking Trails**

- Existing
- Proposed
- Street Connection

**Sidewalks & Crosswalks**

- Existing
- Proposed
- Conceptual - Subject to grant funding and private property easement acquisition

# Location

Image from LINK Middletown

# Timeline

2018

- Initial TRID Project Plan complete.

2019

- Preliminary Trail design underway.

'20-'22

- Final Trail plans underway, modification of scope, and start NPDES permitting.

2023

- Trail design complete and trail construction Bid and Awarded.

2024

- Construction of Mint Trail.

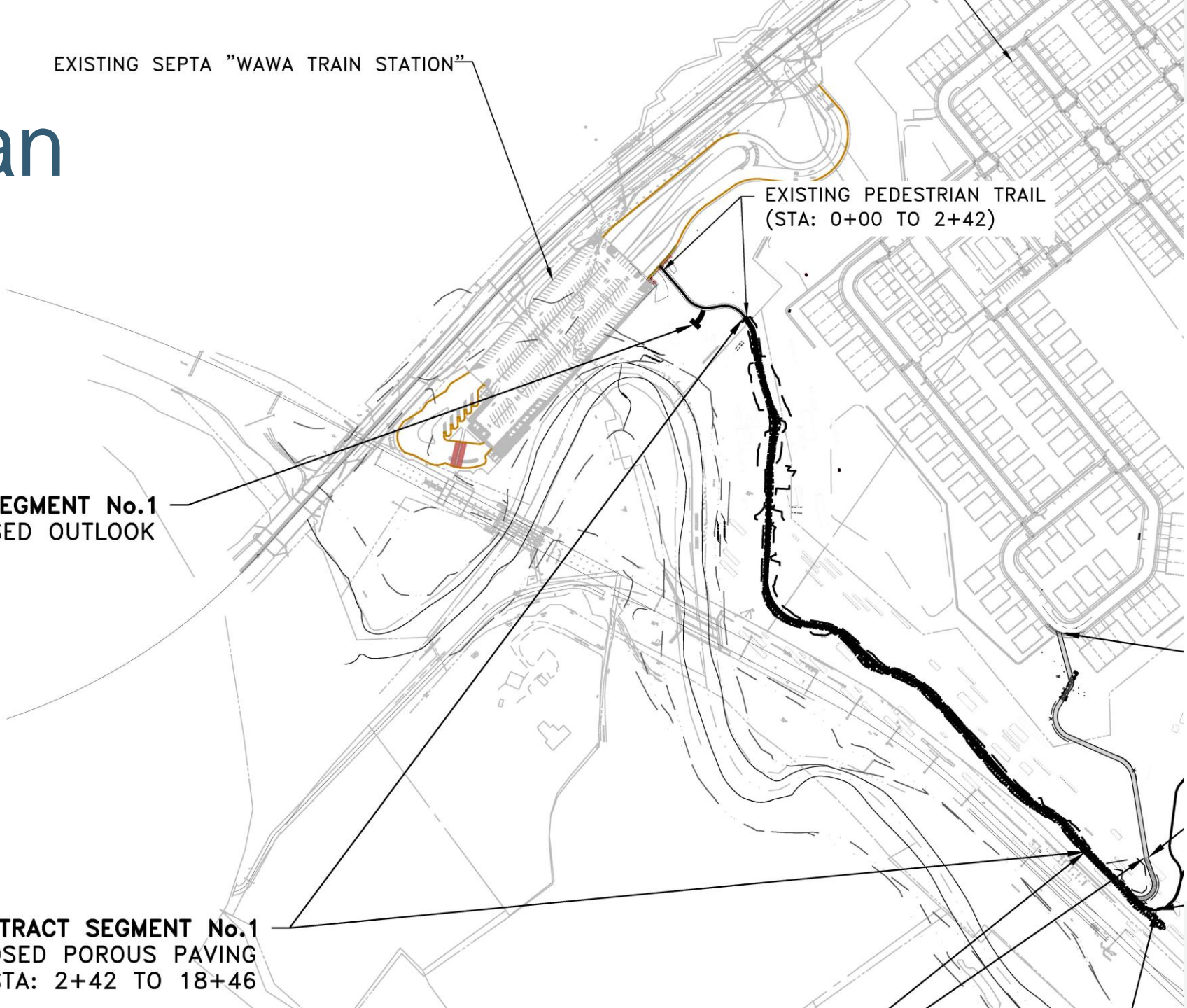
# MINT Trail Plan

EXISTING SEPTA "WAWA TRAIN STATION"

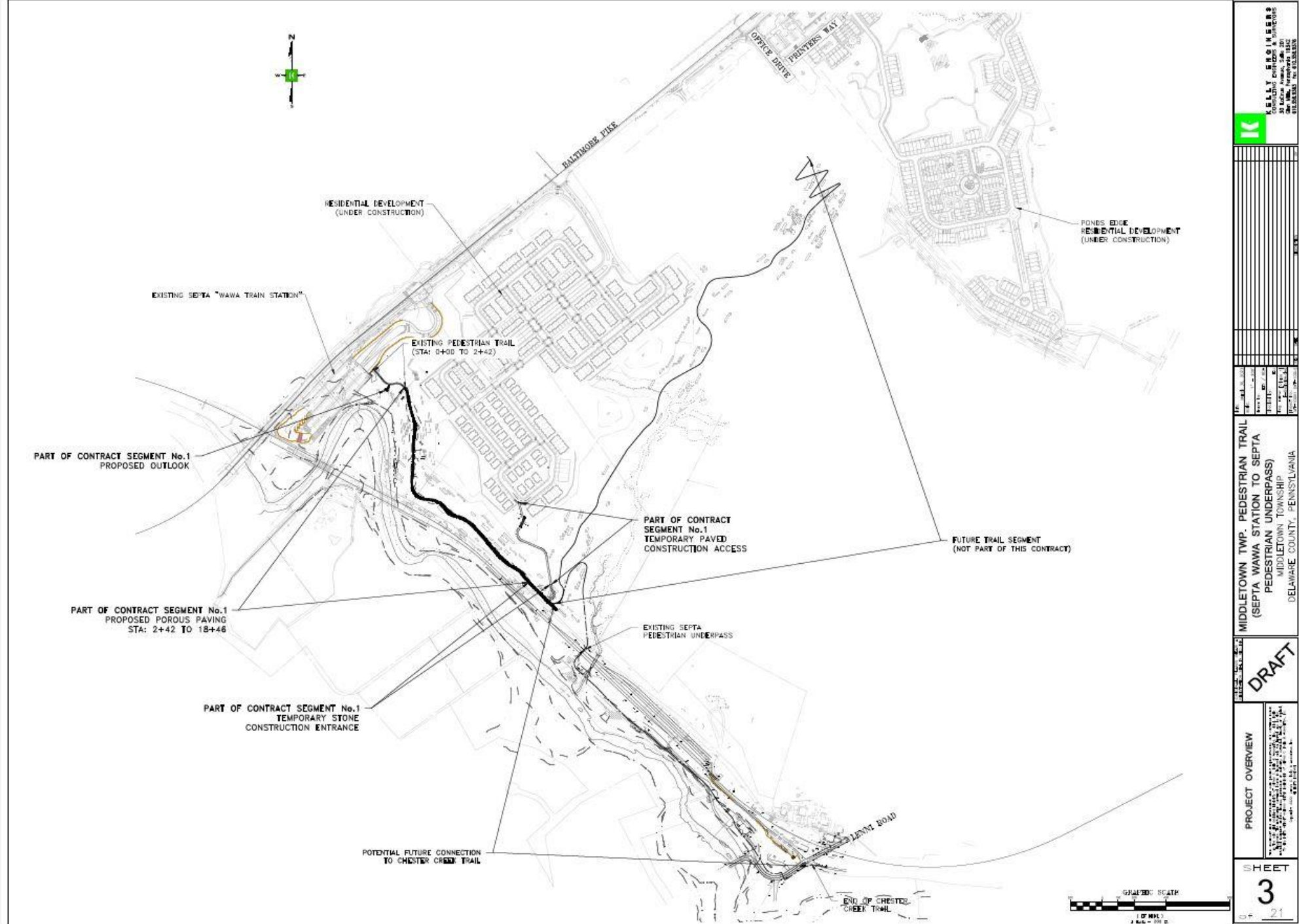
EXISTING PEDESTRIAN TRAIL  
(STA: 0+00 TO 2+42)

PART OF CONTRACT SEGMENT No.1  
PROPOSED OUTLOOK

PART OF CONTRACT SEGMENT No.1  
PROPOSED POROUS PAVING  
STA: 2+42 TO 18+46



# OVERALL TRAIL PLAN



**KELLY ENGINEERS & ARCHITECTS**  
 3000 CHESTER AVENUE, SUITE 200  
 WILMINGTON, DE 19804  
 TEL: 302.438.1100  
 FAX: 302.438.1101  
 WWW.KELLYENGINEERS.COM

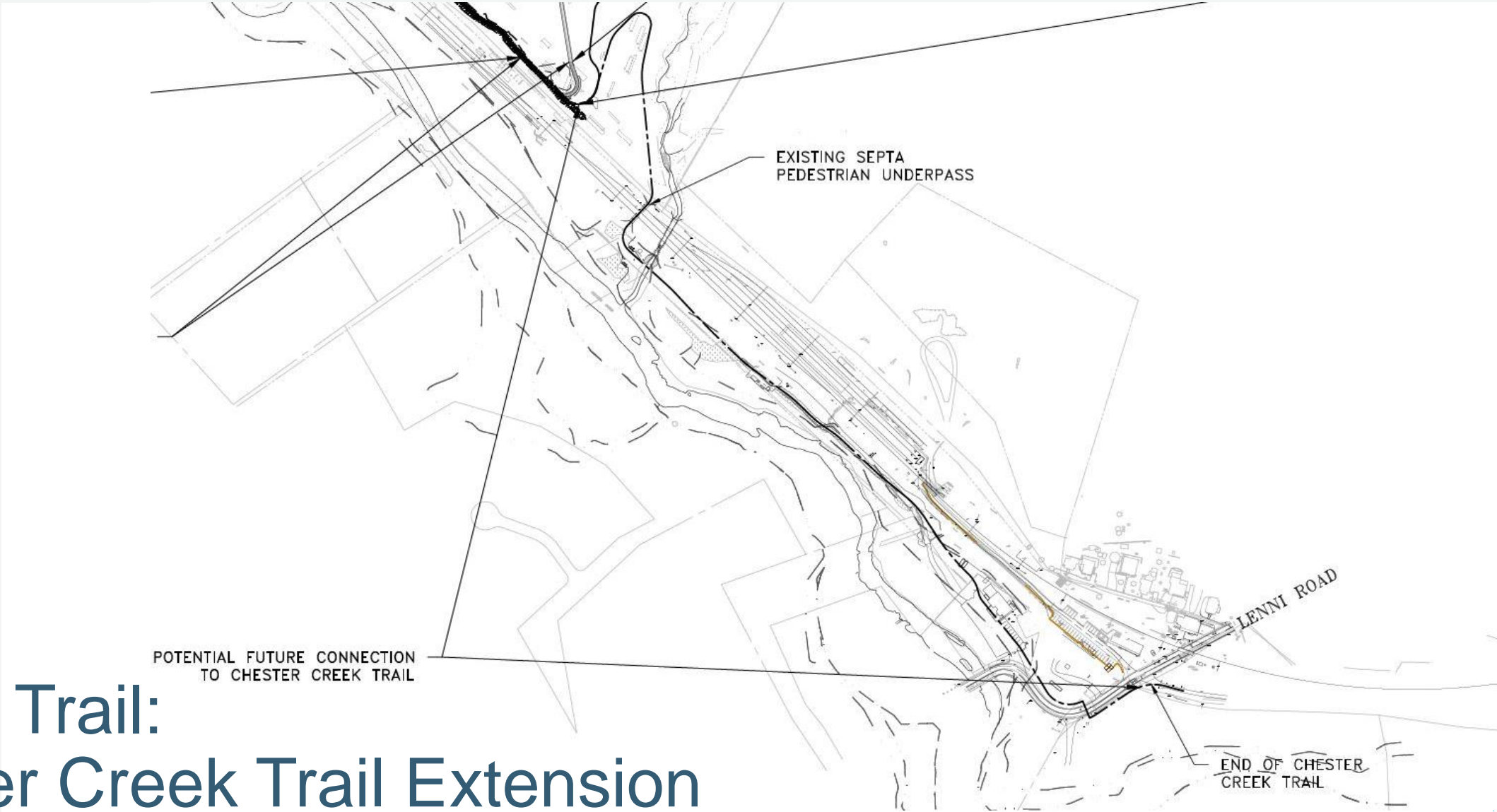
**MIDDLETOWN TWP. PEDESTRIAN TRAIL (SEPTA WAWA STATION TO SEPTA PEDESTRIAN UNDERPASS) MIDDLETOWN TOWNSHIP DELAWARE COUNTY, PENNSYLVANIA**

**DRAFT**

**PROJECT OVERVIEW**

**SHEET 3**

21



# Future Trail: Chester Creek Trail Extension

# Funding

Grant Program	Description	Amount	Award Year
TRID	Engineering and construction	Approximately \$4 Million	2018
DELCO Greenways (MINT)	Trail construction	\$500,000	2019
DELCO Greenways (CCT Extension)	Trail acquisition, and trail construction	\$950,000	2021-22
TASA*	Trail construction	Approx. \$2-\$3 Million	2024



# Thank You

John McMullan, Township Manager

Jennifer Maull, Dir. Of Parks and  
Recreation

[Middletowndelcopa.gov](http://Middletowndelcopa.gov)

