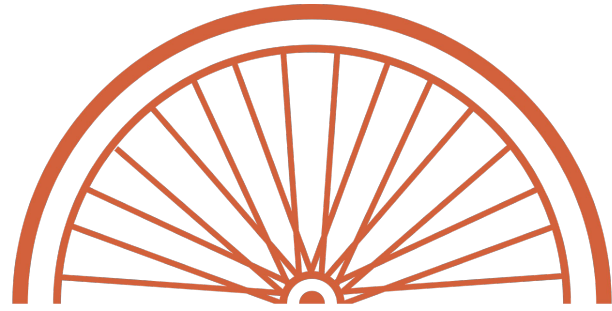


Regional Update

THE
CIRCUIT
TRAILS

Philadelphia Western Suburb Trail Summit
2/10/2024



**BICYCLE
COALITION
OF GREATER
PHILADELPHIA**

**Patrick Monahan,
Regional Organizer**



Circuit Trails Coalition

pennsylvania DEPARTMENT OF TRANSPORTATION

BARTRAM'S GARDEN 1728
National Historic Landmark House and Garden

Clean Air Council

DCNR pennsylvania DEPARTMENT OF CONSERVATION AND NATURAL RESOURCES
www.dcnr.state.pa.us



BRANDYWINE CONSERVANCY



DELAWARE VALLEY REGIONAL PLANNING COMMISSION



PHILADELPHIA PARKS & RECREATION



ANJEC ASSOCIATION OF NEW JERSEY ENVIRONMENTAL COMMISSIONS

Preserving Our Land & Water



DESTINATION SCHUYLKILL RIVER



schuylkill banks



Mercer County "The Capital County"



EAST FALLS development corporation



pennsylvania environmental council



SCATTERGOOD FOUNDATION



GVF A TRANSPORTATION MANAGEMENT ASSOCIATION



pennsylvania environmental council



CRESHEIM TRAIL Friends of the Cresheim Trail



Delaware River WATERFRONT Corporation

The Schuylkill Center for Environmental Education

WILLIAM PENN FOUNDATION



OTIS Office of Transportation Infrastructure, & Sustainability CITY OF PHILADELPHIA

Fairmount Park PHILADELPHIA'S PARK SYSTEM



Darby Creek Valley Association www.DCVA.org

DCNR

STREETS PHILADELPHIA

New Jersey Bike & Walk Coalition

rails-to-trails conservancy



GREATER MERCER TMA Discover Greener Paths

Natural Lands Trust

STATE OF NEW JERSEY DEPARTMENT OF TRANSPORTATION Chris Christie, Governor | Kim Guadagno, Lieutenant Governor

Philadelphia TWD Water Department

BICYCLE COALITION OF GREATER PHILADELPHIA

East Coast Greenway ALLIANCE



D&R GREENWAY LAND TRUST

PHILADELPHIA OUTWARD BOUND SCHOOL



RADNOR CONSERVANCY

Schuylkill River Park Alliance



New Jersey Conservation FOUNDATION

Safe Routes to School National Partnership NEW JERSEY

SEPTA

TRI-STATE TRANSPORTATION CAMPAIGN Mobilizing the Region

UrbanPromise believe. become. belong. be promise.



The Schuylkill Project Connecting our communities to the river - East Pike through Mainstem Tookany/Tacony-Frankford Watershed Partnership, Inc.

Safe Routes to School National Partnership NEW JERSEY

TMACC Transportation Management Association of Chester County

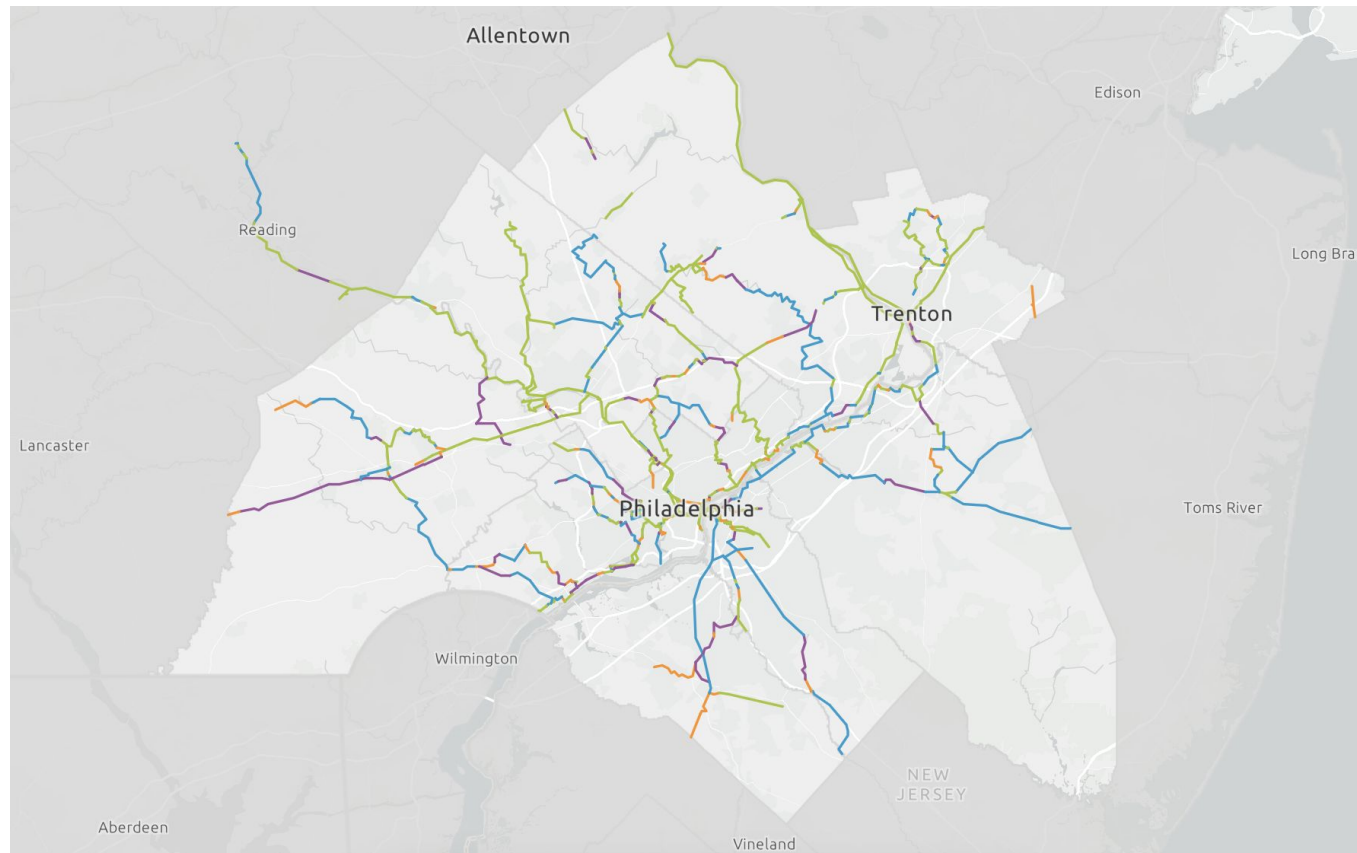
TRI-STATE TRANSPORTATION CAMPAIGN Mobilizing the Region

UrbanPromise believe. become. belong. be promise.

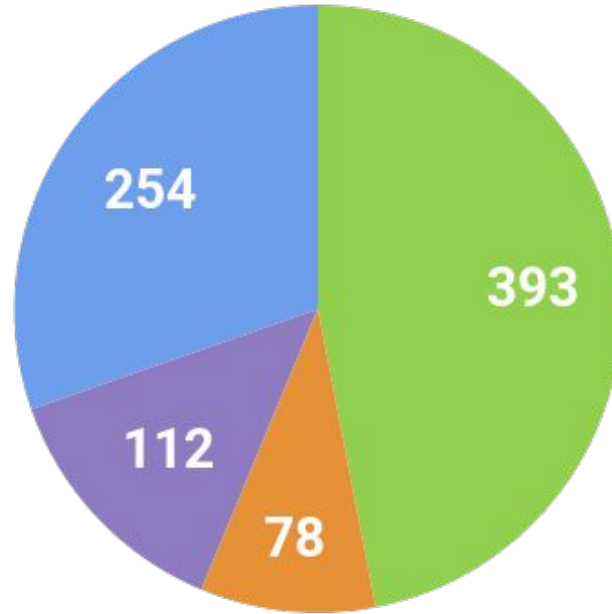


The Circuit Trails Network

- Existing
- In Progress
- Pipeline
- Planned



Regional Circuit Trails Status



● Existing ● In Progress ● Pipeline ● Planned

THE

CIRCUIT

TRAILS

2023 Trail Openings

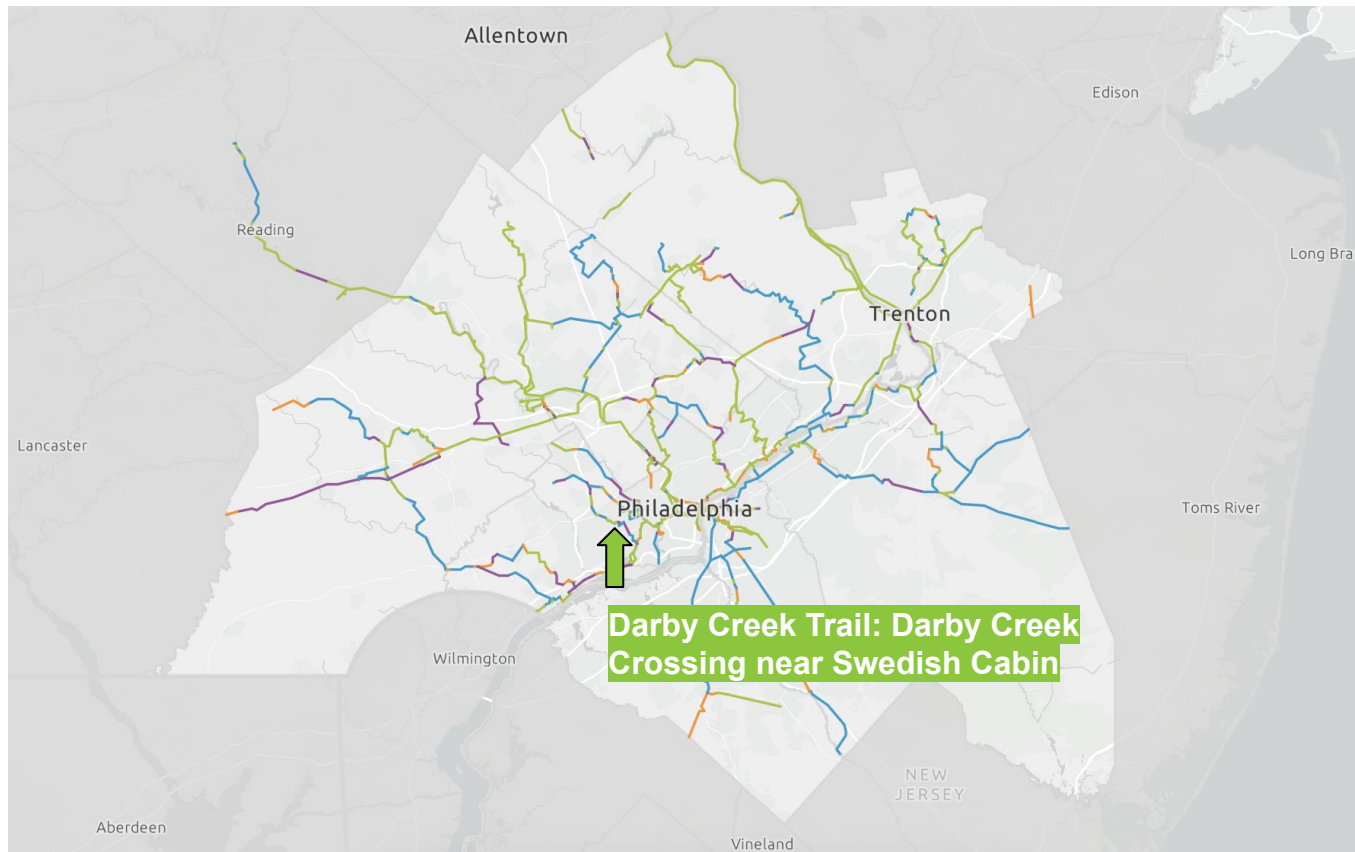
Circuit Trails Completed in 2023

- Burlington-Camden Trail: Cove Rd to Bethel Ave - 0.26 miles
- Chester Valley Trail Extension - 3.9 miles
- **Darby Creek Trail: Crossing near Swedish Cabin - 0.08 miles**
- Delaware River Heritage Trail: 5th Street Trail - 0.7 miles
- Delaware River Heritage Trail: Cramer Hill to Harrison Ave - 0.05 miles
- Delaware River Trail: Aramingo Ave to Lehigh Ave - 0.75 miles
- Delaware River Trail: K&T Phase 2 - 0.6 miles
- Delaware River Trail: Princeton Ave to Cottman Ave - 0.26 miles
- **East Coast Greenway: PA-DE Border - 0.3 miles**
- **Naylor's Run Trail: Chapman Park to near Marshall Road - 0.6 miles**

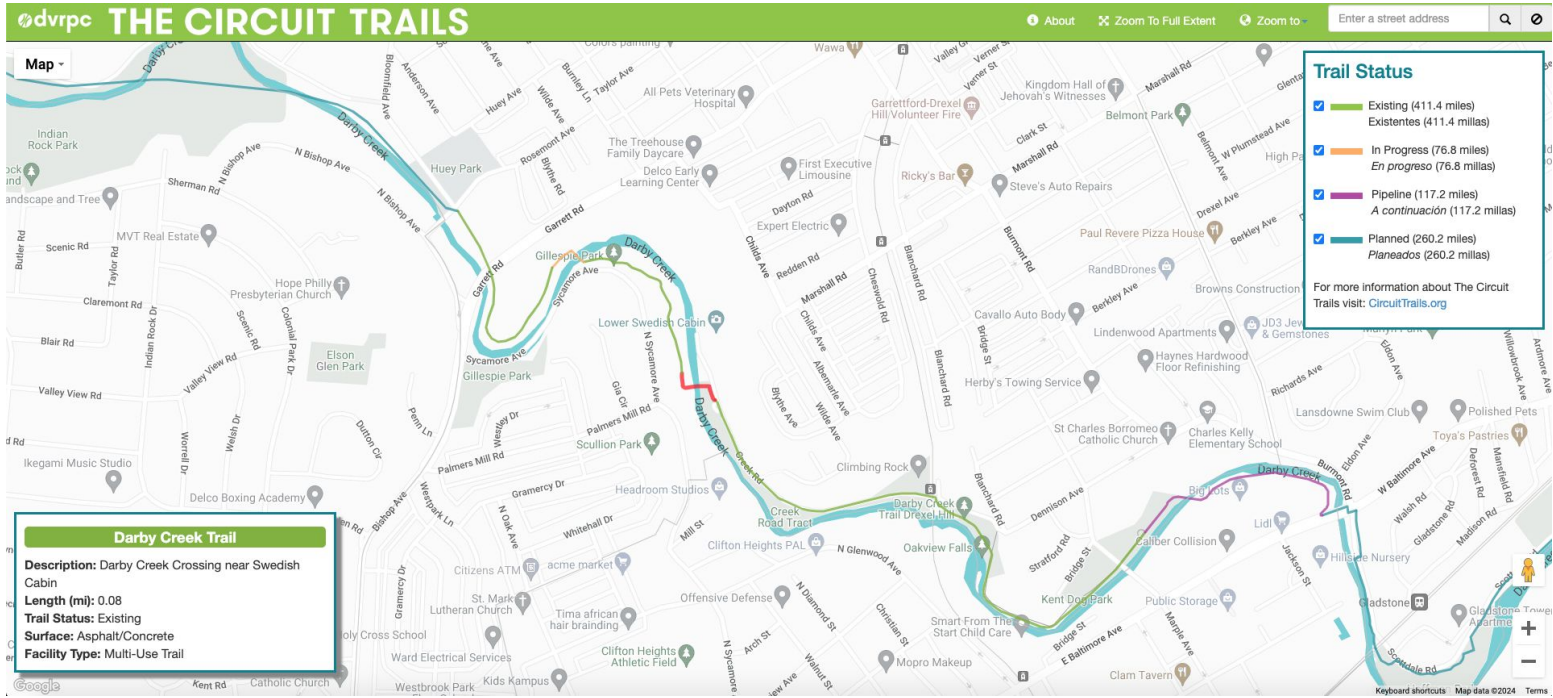
Total: 7.4 miles

The Circuit Trails Network

- Existing
- In Progress
- Pipeline
- Planned



Darby Creek Trail: Crossing near Swedish Cabin



Darby Creek Trail: Crossing near Swedish Cabin

THE CIRCUIT TRAILS

About Zoom To Full Extent Zoom to Enter a street address

Satellite -

Darby Creek Trail

Description: Darby Creek Crossing near Swedish Cabin
Length (mi): 0.08
Trail Status: Existing
Surface: Asphalt/Concrete
Facility Type: Multi-Use Trail

Trail Status

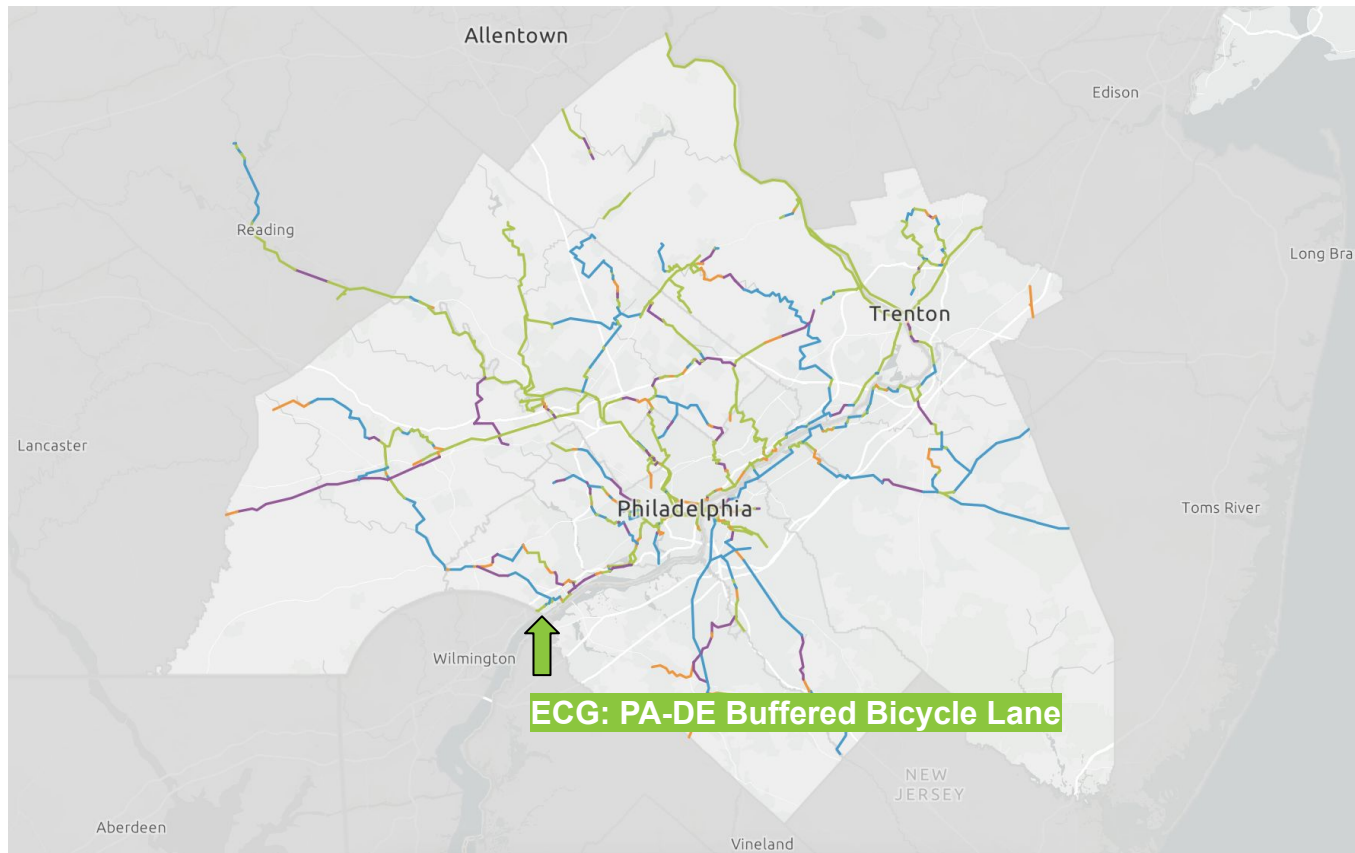
- Existing (411.4 miles)
Existentes (411.4 millas)
- In Progress (76.8 miles)
En progreso (76.8 millas)
- Pipeline (117.2 miles)
A continuación (117.2 millas)
- Planned (260.2 miles)
Planeados (260.2 millas)

For more information about The Circuit Trails visit: CircuitTrails.org

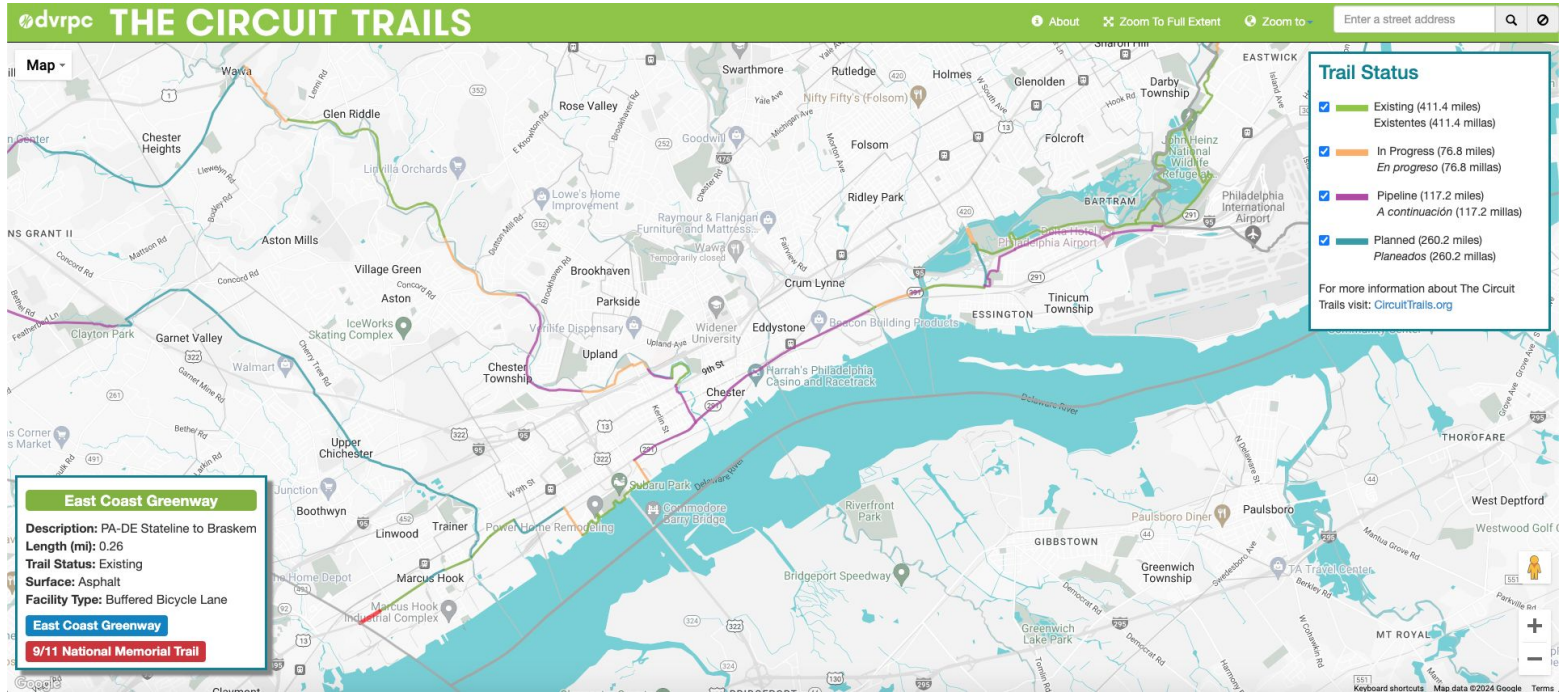
Keyboard shortcuts | Map data ©2024 | Terms | Report a map error

The Circuit Trails Network

- Existing
- In Progress
- Pipeline
- Planned



East Coast Greenway: PA-DE Border



East Coast Greenway: PA-DE Border

THE CIRCUIT TRAILS

Enter a street address

Satellite

Trail Status

- Existing (411.4 miles)
Existentes (411.4 millas)
- In Progress (76.8 miles)
En progreso (76.8 millas)
- Pipeline (117.2 miles)
A continuación (117.2 millas)
- Planned (260.2 miles)
Planeados (260.2 millas)

For more information about The Circuit Trails visit: CircuitTrails.org

East Coast Greenway

Description: PA-DE Stateline to Braskem
Length (mi): 0.26
Trail Status: Existing
Surface: Asphalt
Facility Type: Buffered Bicycle Lane

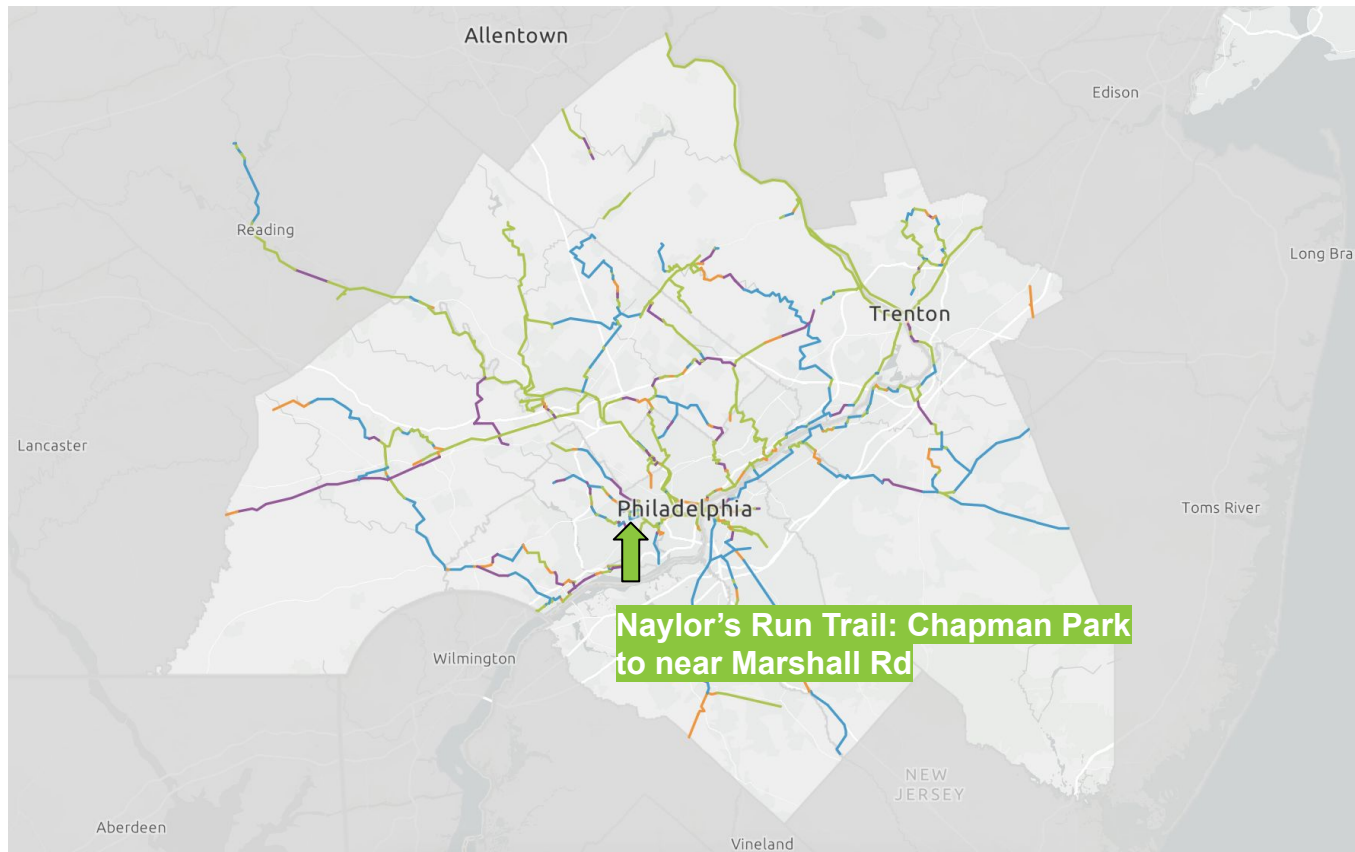
East Coast Greenway

9/11 National Memorial Trail

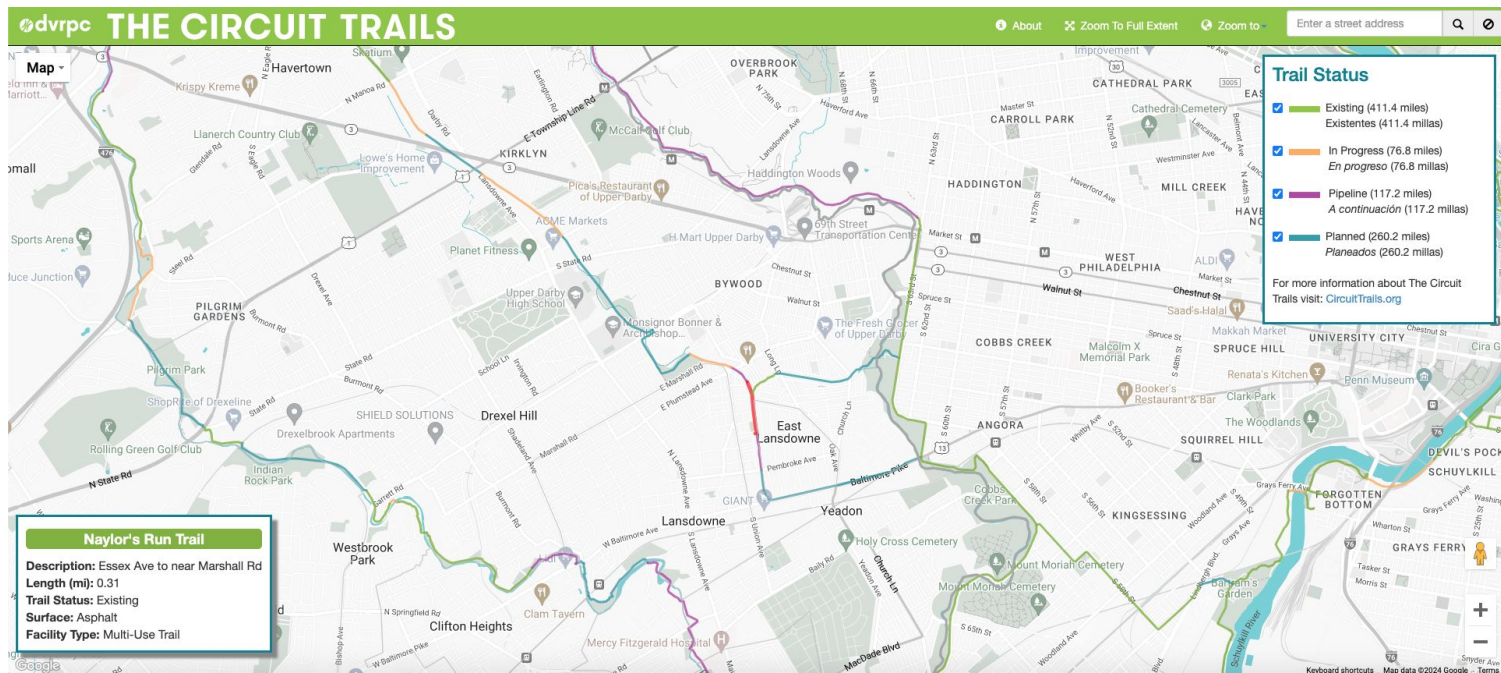
Keyboard shortcuts | Map data ©2024 | Terms | Report a map error

The Circuit Trails Network

- Existing
- In Progress
- Pipeline
- Planned



Naylor's Run Trail: Chapman Park to near Marshall Road



Naylor's Run Trail: Chapman Park to near Marshall Road

THE CIRCUIT TRAILS

Enter a street address

Satellite

Trail Status

- Existing (411.4 miles)
Existentes (411.4 millas)
- In Progress (76.8 miles)
En progreso (76.8 millas)
- Pipeline (117.2 miles)
A continuación (117.2 millas)
- Planned (260.2 miles)
Planeados (260.2 millas)

For more information about The Circuit Trails visit: CircuitTrails.org

Naylor's Run Trail

Description: Essex Ave to near Marshall Rd
Length (mi): 0.31
Trail Status: Existing
Surface: Asphalt
Facility Type: Multi-Use Trail

Google

Keyboard shortcuts | Map data ©2024 | Terms | Report a map error

**In 2023,
\$41.7M was
secured for
the
development
of the
Circuit!**

A Year of Momentum

#OnTheCircuit

[← BACK TO BLOG](#)

AUTHORED BY: THE CIRCUIT TRAILS

SHARE POST:

 Share

 Tweet

 Share

 Email





THE
CIRCUIT
TRAILS

2023

ANNUAL REPORT



Chester Valley Trail Extension

**The
Circuit
Trails
Annual
Report
Coming
Soon!**

THE
CIRCUIT
TRAILS

THE CIRCUIT TRAILS



**DISCOVER WHAT'S
NEW ON THE
CIRCUIT**

A photograph of three women jogging on a paved path next to a stream. The trees are in autumn, with yellow and orange leaves. The women are wearing athletic gear. A blue banner with white text is overlaid on the top right of the image.

HOW YOU CAN HELP

Be active as a Circuit Citizen in your County and sign up for the newsletter!

THOM CARROLL

We can do this!

THE

CIRCUIT

TRAILS

Contact Info:

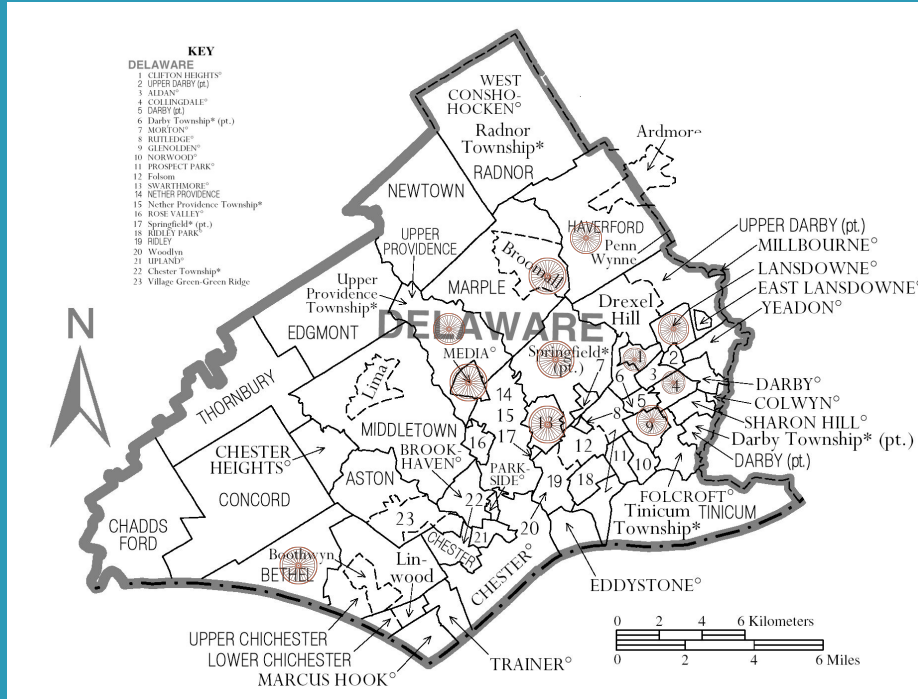
patrick@bicyclecoalition.org

The Bike Delco Action Team: Expanding the Edges of Possibility

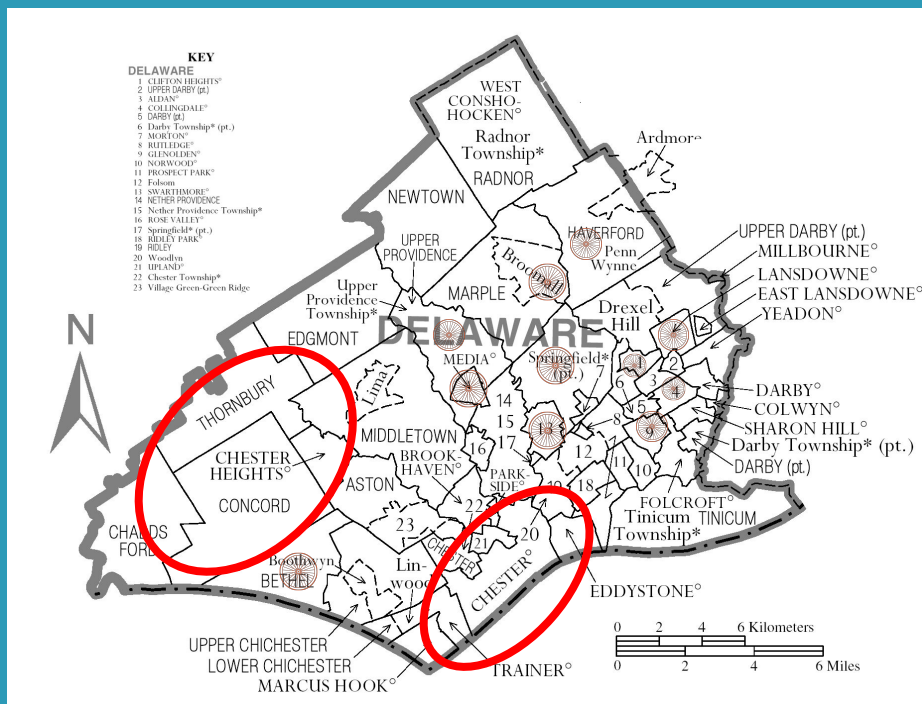


**BICYCLE
COALITION**
OF GREATER
PHILADELPHIA

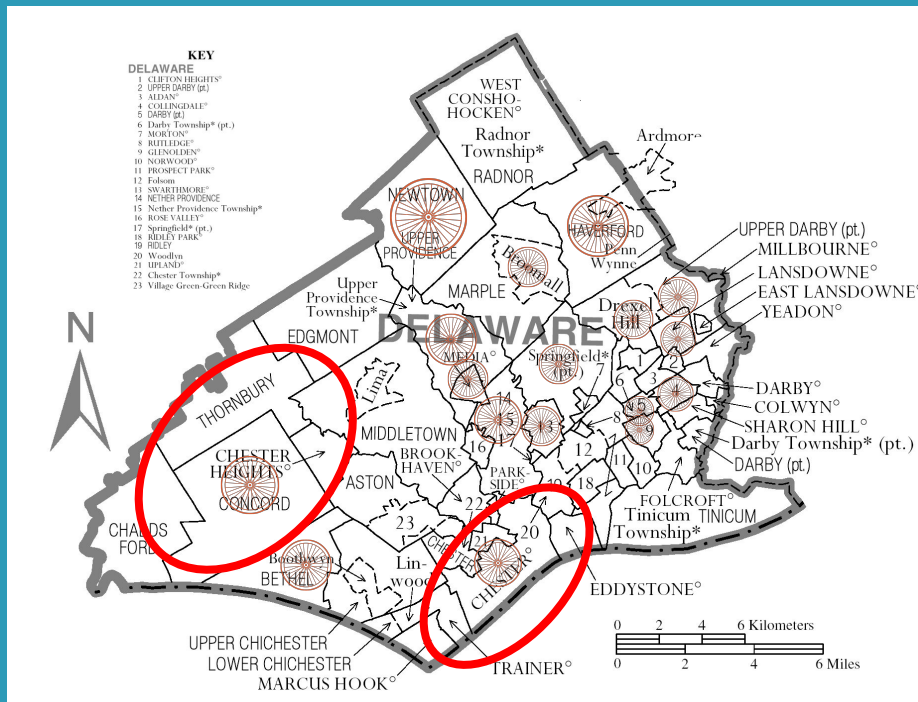
Last Year



Last Year



This Year



Outreach



Outreach

A screenshot of a website article from the Bicycle Coalition of Greater Philadelphia. The website has a dark header with the logo and navigation links: PROGRAMS, RESOURCES, ABOUT, NEWS, EVENTS, and GET INVOLVED. The article title is "From Edges of Possibility to Actuality in Delaware County" by Patrick Monahan, dated Jun 20, 2023. The article content includes a sub-headline "Biking the Region, Connecting Greater Philadelphia Bicycle Network, The Circuit" and 0 comments. Below the text is a photograph of an outdoor event with people and bicycles. The author's name, James Bergman, Bike Delaware County Co-Chair, is listed at the bottom.

BICYCLE COALITION OF GREATER PHILADELPHIA

PROGRAMS ▾ RESOURCES ▾ ABOUT ▾ NEWS ▾ EVENTS ▾ GET INVOLVED

From Edges of Possibility to Actuality in Delaware County

by Patrick Monahan | Jun 20, 2023 | Biking the Region, Connecting Greater Philadelphia Bicycle Network, The Circuit | 0 comments

Authoried by: James Bergman, Bike Delaware County Co-Chair

INTRODUCTIONS

Outreach



Delaware County Sustainability Conference

Exhibitors:

All Together Now Pennsylvania

Bicycle Coalition of Greater Philadelphia

Chester, Ridley, Crum Watershed Group (CRC)

Clean Air Council and Marcus Hook Area Neighbors for Public Health

Darby Creek Valley Association

Delaware County Conservation District

Delaware County Health Department

Delaware County League of Women Voters

Delaware County Parks and Recreation Department

Delaware County Planning Department



Rides



EDGES OF POSSIBILITY RIDE



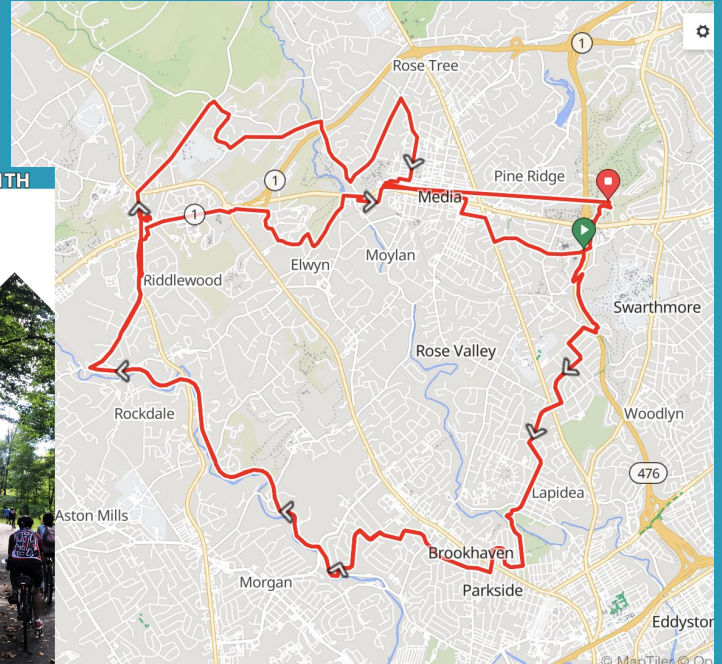
Scan me to RSVP
for the Ride!



BIKE
DELAWARE
COUNTY

1:30 pm | [RSVP bicyclecoalition.org/events](https://www.bicyclecoalition.org/events)

SUNDAY, JUNE 11TH



Rides



Advocacy



HAIRMAN
JILDING
35
PHILADELPHIA 19120-2003
767



HOUSE DEMOCRATIC
WEBSITE: WWW.PAHC
EMAIL: POLICY@PAHC.PA.GOV
@PAHC

HOUSE OF REPRESENTATIVES
COMMONWEALTH of PENNSYLVANIA

House Democratic Policy Committee Roundtable
Pedestrian Safety on Main Streets

Tuesday, October 24, 2023 | 2:00 p.m.
Representative Jennifer O'Mara

Advocacy



VISION ZERO DELCO
DRIVE SAFE | ROLL SAFE | WALK SAFE

What is Vision Zero Delco?

Delaware County is adopting Vision Zero which is an approach to eliminating traffic deaths and crashes because one traffic death is too many. To launch the Vision Zero program, we are excited to develop a Vision Zero Action Plan that will identify ways to Drive Safe, Roll Safe, and Walk Safe. Specifically, the plan will evaluate crash data, engage the public, identify a high injury network, and recommend strategies and projects to improve safety.

Our Guiding Principles

- Traffic deaths are preventable
- People make mistakes, but they should not be deadly
- Roads should be safe for all users and people
- Improving safety is not expensive
- Change is hard, but possible

Our Schedule

Community conversations will begin in September 2023 and will continue until April 2024. The Vision Zero Action Plan is expected to be completed by June 2024.

★ 2023 2024 2025 2026 2027 2028 2029 2030

COMMUNITY CONVERSATIONS

Did you know?

There were **54 traffic deaths** in Delaware County in 2022.

- 20** people died while walking
- 9** people were seriously injured while rolling
- 34** people died while driving

Stay in the Loop!

- Take the survey!** Use your phone to scan the QR code, or visit delco.gov/visionzeroinfo
- Become a Safety Ambassador!** Email safety@delco.delaware.gov to learn more.
- Stay Connected!** Get notified on upcoming engagements and latest project related news by going to our website: delco.gov/visionzeroinfo



FOCUS AREA 03


TRANSPORTATION

GOAL

Increase accessibility to safe, active multimodal transportation as alternative to single-occupant motor vehicles

Photo: Delco through walking on Kent County Park. Photo: Delco through walking on Kent County Park. Photo: Delco through walking on Kent County Park. Photo: Delco through walking on Kent County Park.

A Sustainability Plan for Delaware County



BIKE
DELAWARE
COUNTY

April 4, 2023

Gina Burritt, Director
Delaware County Planning Department
First Floor
1055 E. Baltimore Pike
Media, PA 19063

RE: DCNR Community Conservation Partnerships Program (C2P2) Darby Creek Trail Phase 2 Final Design Completion

Dear Ms. Burritt:

We are writing to express Bike Delaware County's support for Delaware County's application for a Pennsylvania Department of Conservation and Natural Resources (DCNR) grant to complete engineering and design for the development of the 0.5 miles of the Darby Creek Trail between Kent County Park in Upper Darby and the Gateway Trail in Lansdowne. Bike Delaware County

What Can We Do for Your Area?

- Letters of support
- Rides and events
- Tabling
- Publicity/blog posts
- Bike counts
- Mobilize cycling advocates

bikedelco@gmail.com

Join in!



**BICYCLE
COALITION**
OF GREATER
PHILADELPHIA