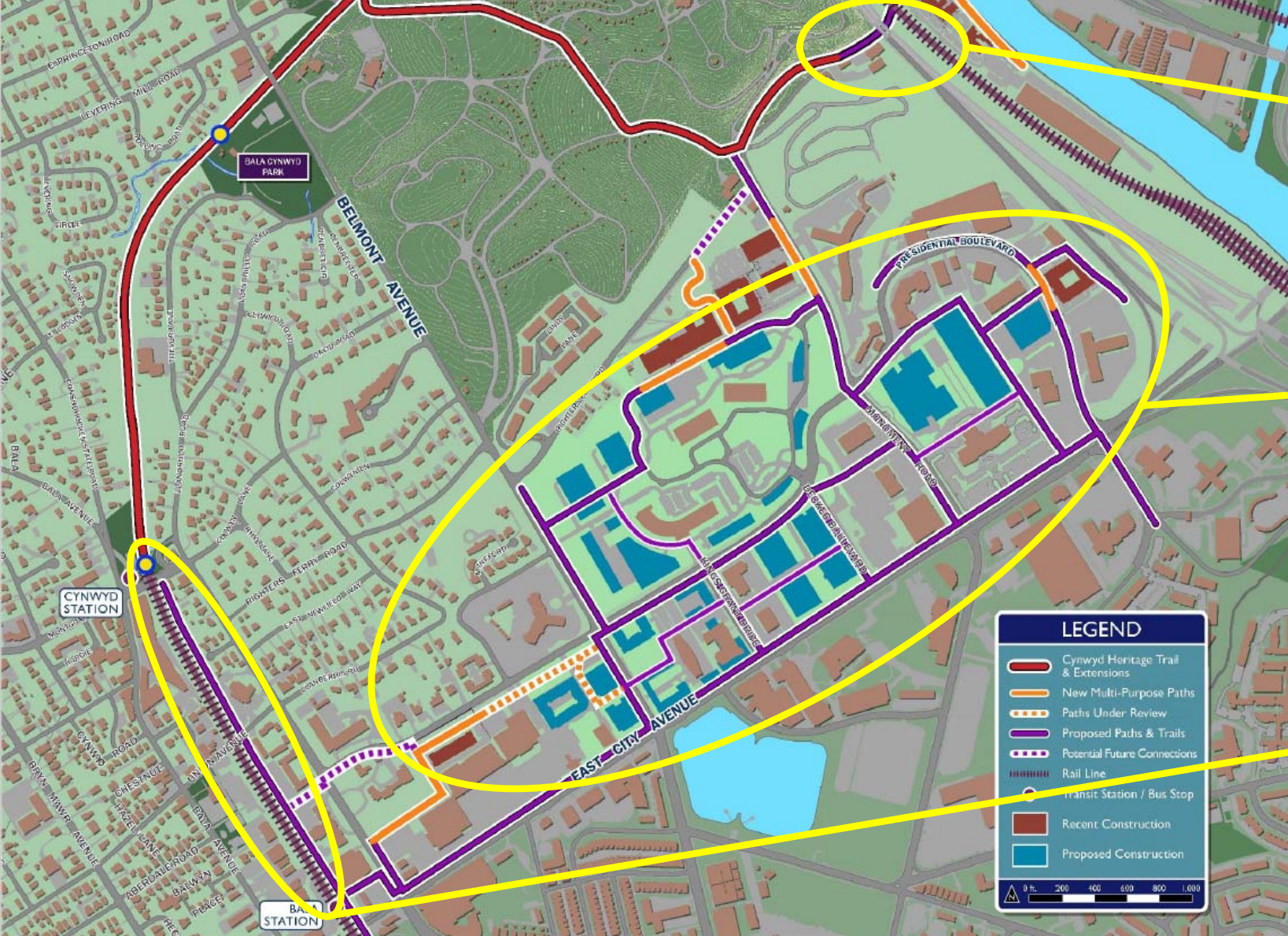


Lower Merion Updates

Cynwyd Heritage Trail
City Line District
Main Line Greenway
Wynnewood Road Diet





West Laurel Hill Cemetery

City Avenue District

Cynwyd Line Rail with Trail

LEGEND

- Cynwyd Heritage Trail & Extensions
- New Multi-Purpose Paths
- Paths Under Review
- Proposed Paths & Trails
- Potential Future Connections
- Rail Line
- Transit Station / Bus Stop
- Recent Construction
- Proposed Construction

0 ft. 200 400 600 800 1000

Cynwyd Line Rail with Trail



Cynwyd Trail
Extension
from
Cynwyd Station
to
Bala Station

- ✓ Funded
- ✓ Designed
- In SEPTA Review
- Awaiting Approval

Repurposing Schuylkill River Bridges



Manayunk Arch Bridge

Working with Philadelphia to light bridge and Cynwyd Trail for future 24/7 use

“Mule” Bridge

Working with Norfolk Southern and Philadelphia to extend a trail to Manayunk over this disused bridge

Pencoyd Bridge

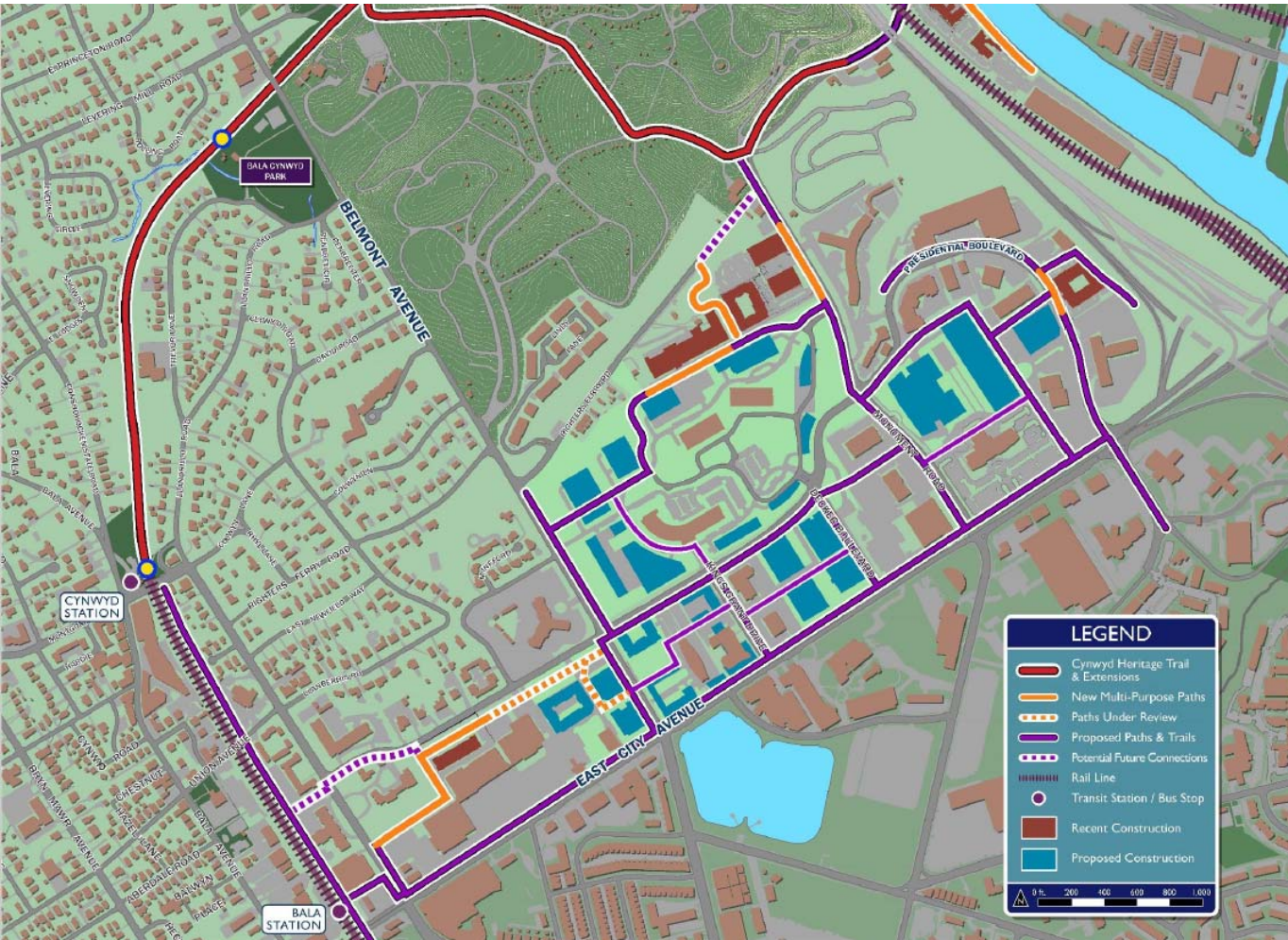
Actively negotiating with NS to lease land necessary to connect the Cynwyd Trail Spur to an existing waterfront trail

Repurposing Schuylkill River Bridges



Existing
tunnel
under
Norfolk
Southern
railroad
tracks

Cynwyd Trail – City Avenue District

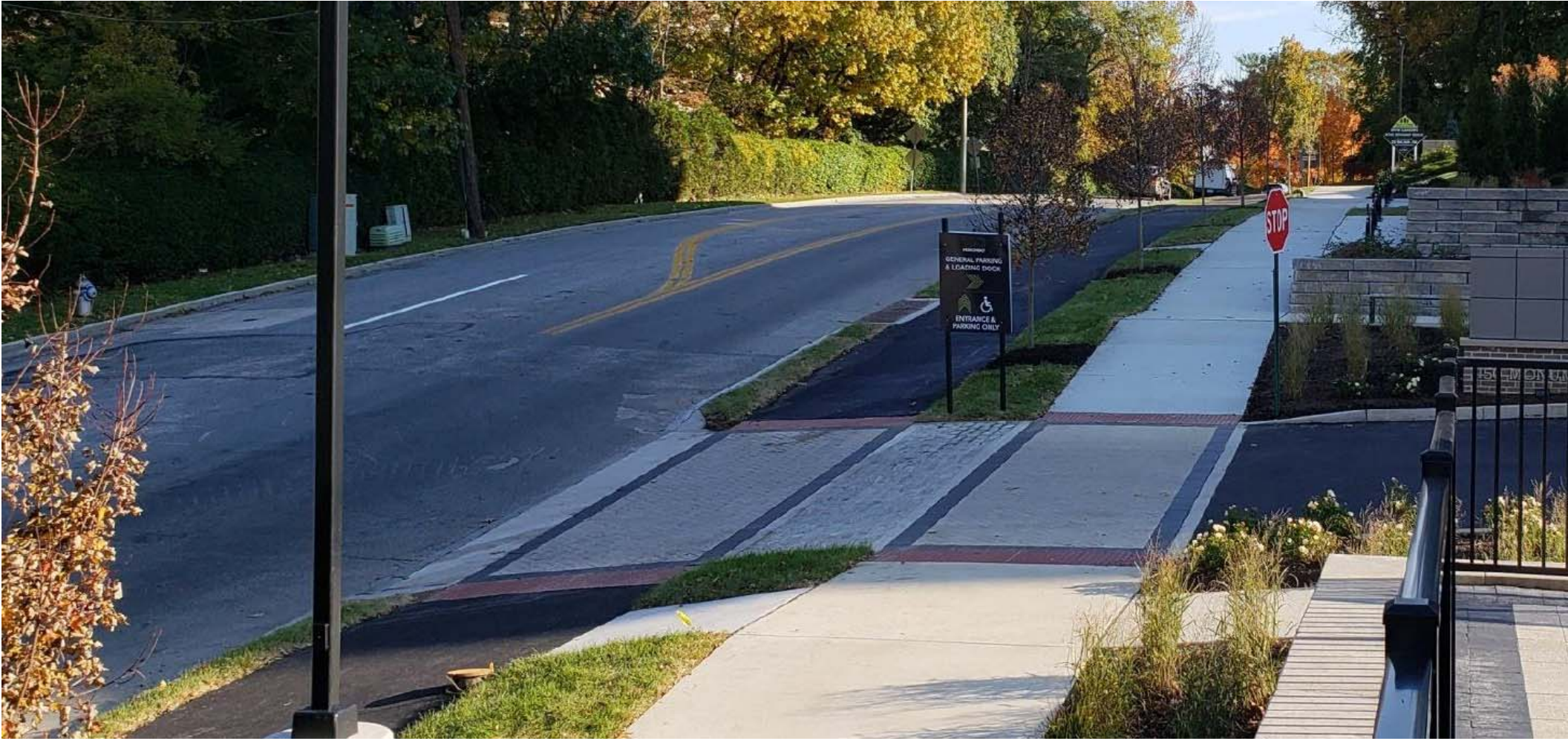


“Township is working with the City Avenue District and developers to construct a multiuse trail network on properties being redeveloped in City Avenue. Several sections have been constructed and are in the pipeline. There is tremendous public support for these trail connections linking existing and planned redevelopment.”

City Avenue District



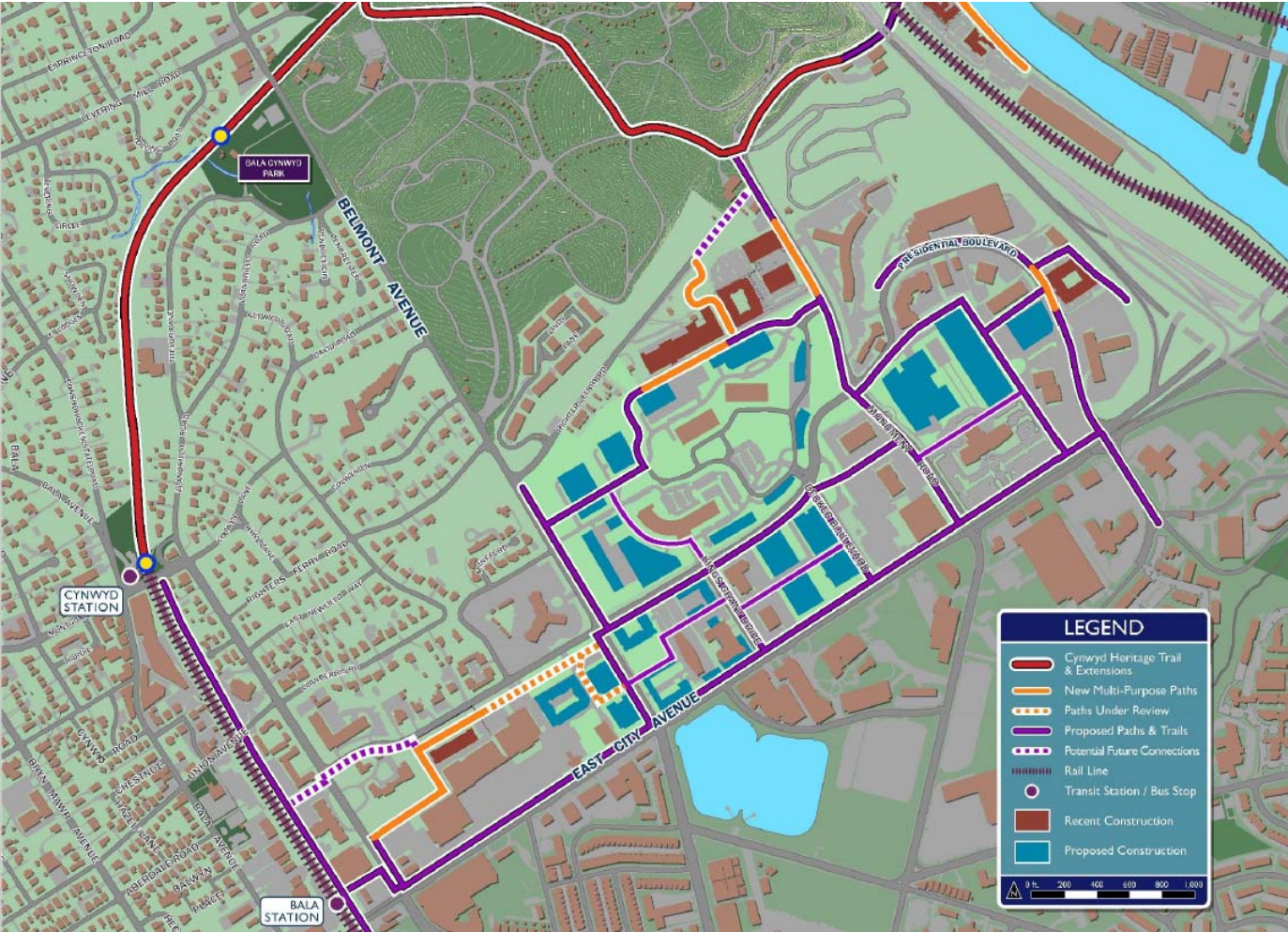
City Avenue District



City Avenue District



Cynwyd Trail – Righters Ferry Road



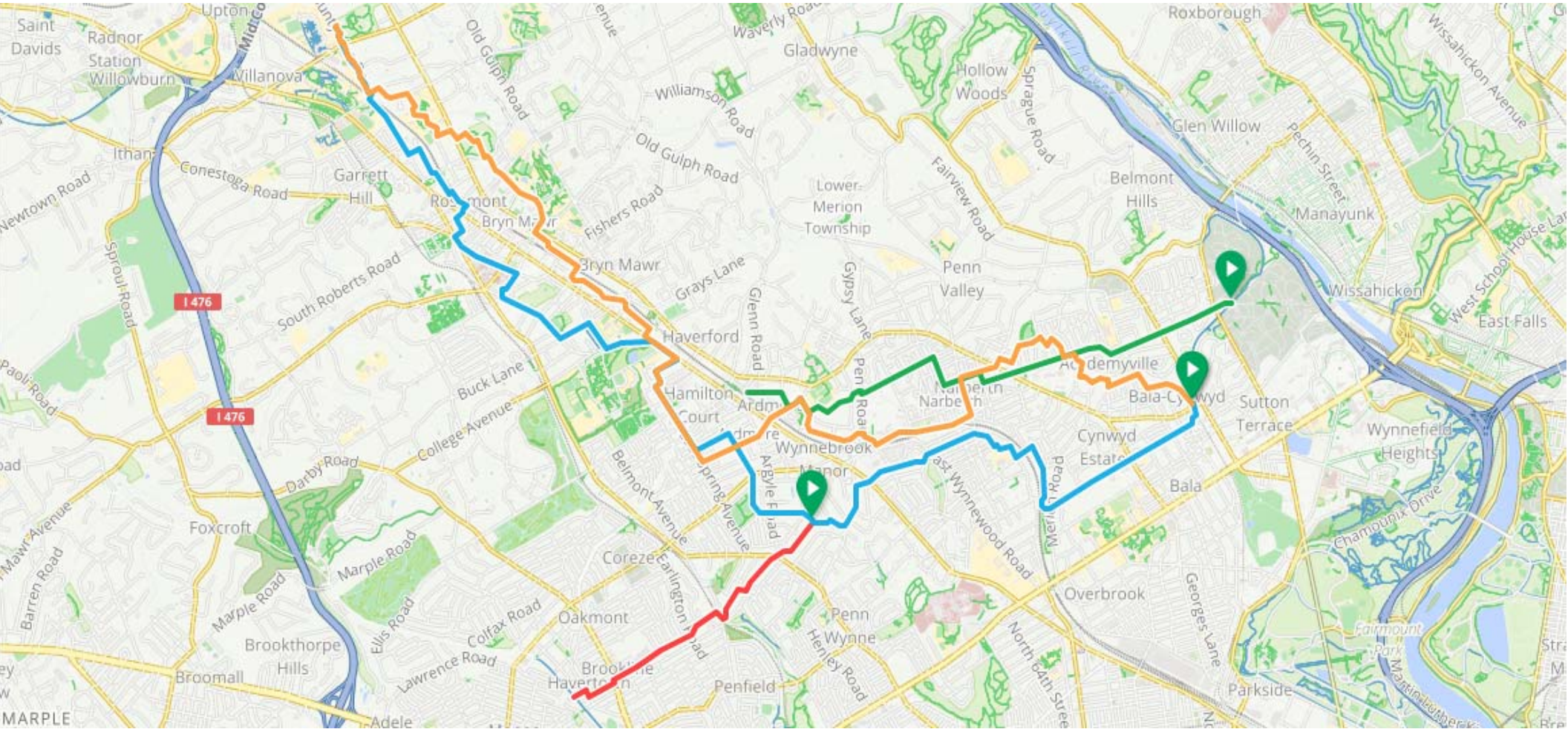
“Township is working with stakeholders large developers / Laurel Hill Cemetery on a trail access plan to complete trail connections to City Avenue through the Cemetery and to provide a safe multi-use connection from Belmont Avenue to Pencoyd Landing.”

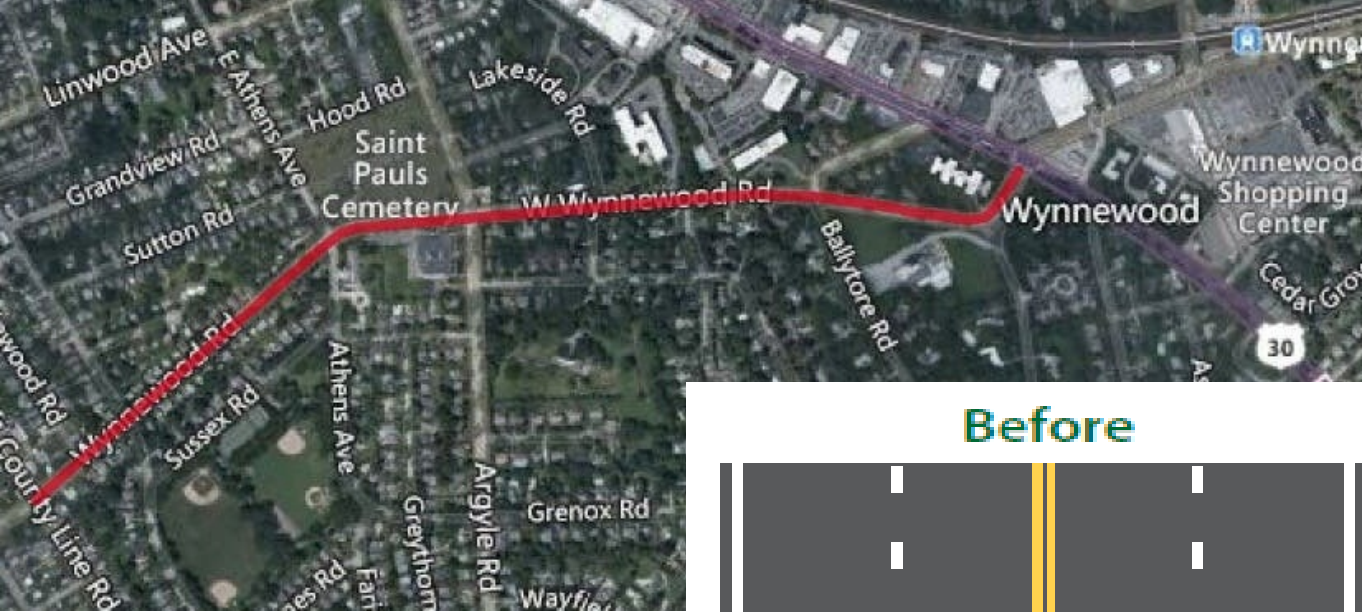
Main Line Greenway



“Township staff has been working internally to identify and address a handful of stress points on the eastern section between Haverford College and the Cynwyd Trail. Stress point improvements will be added to 2023 budget.”

Main Line Greenway

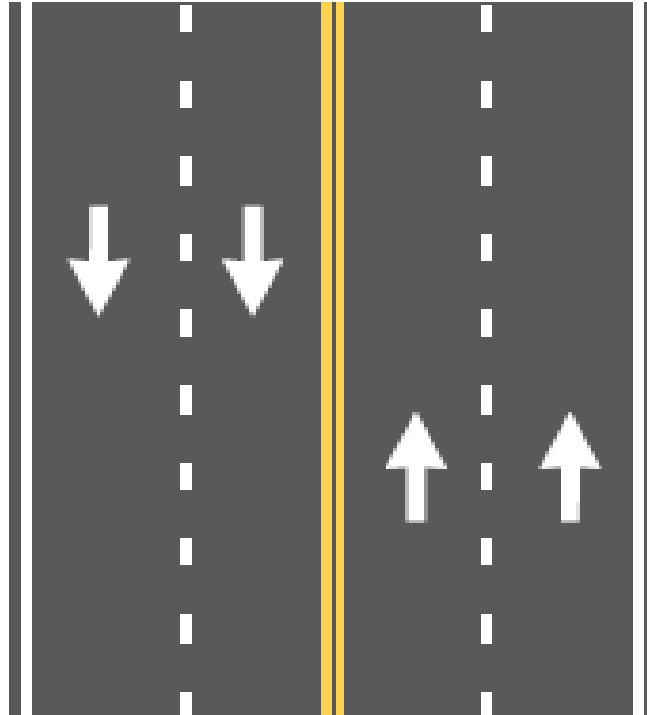




Wynnewood Road “Diet”

Also Incorporated
a small Bike Lane
Segment

Before



After

