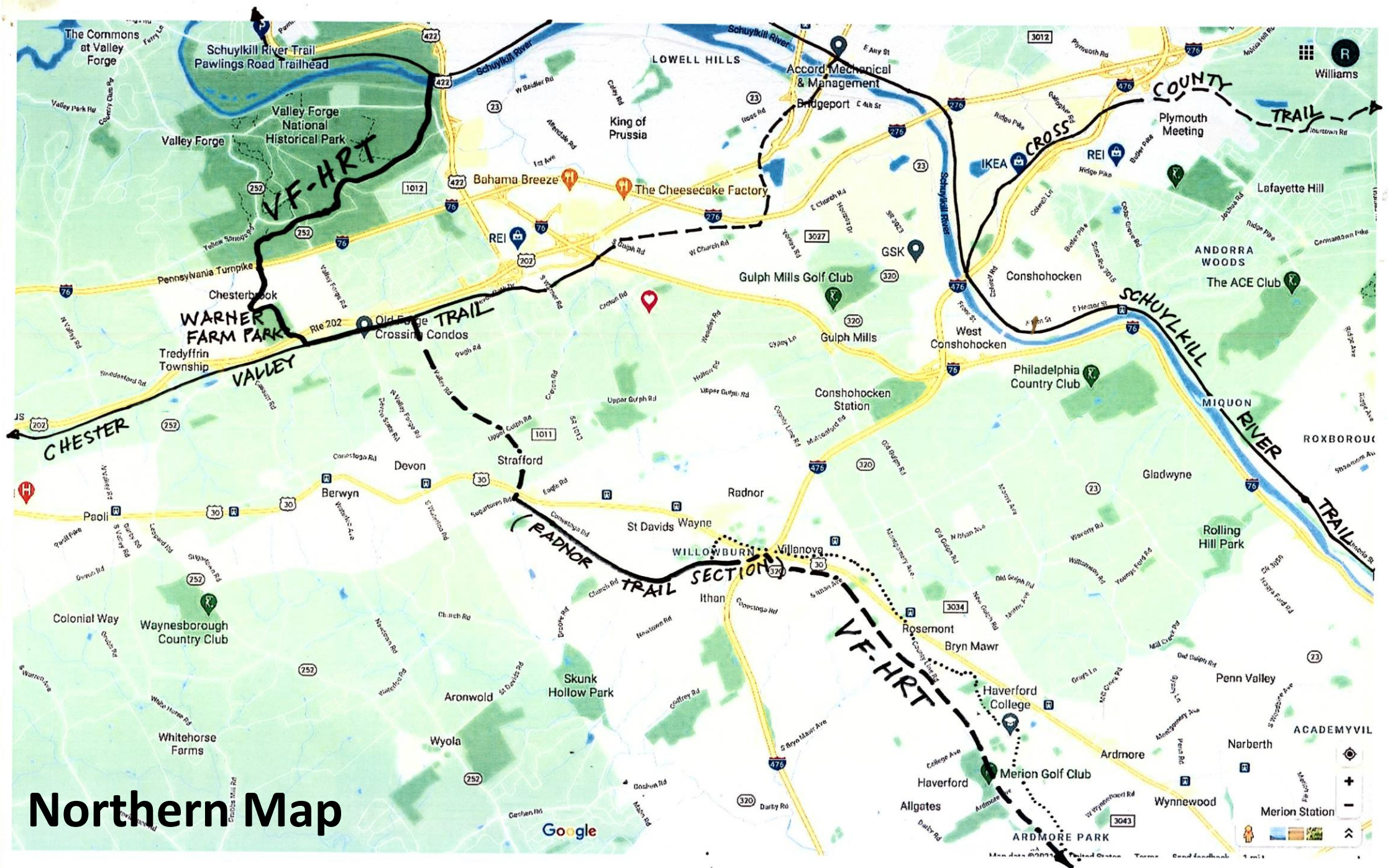


Philadelphia Western Suburbs Trail Summit

February 4, 2023



Valley Forge to Heinz Refuge Trail



Northern Map

Google



Sullivan Bridge Over the Schuylkill



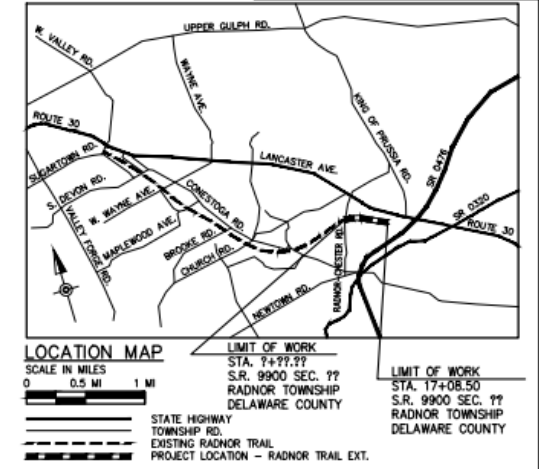
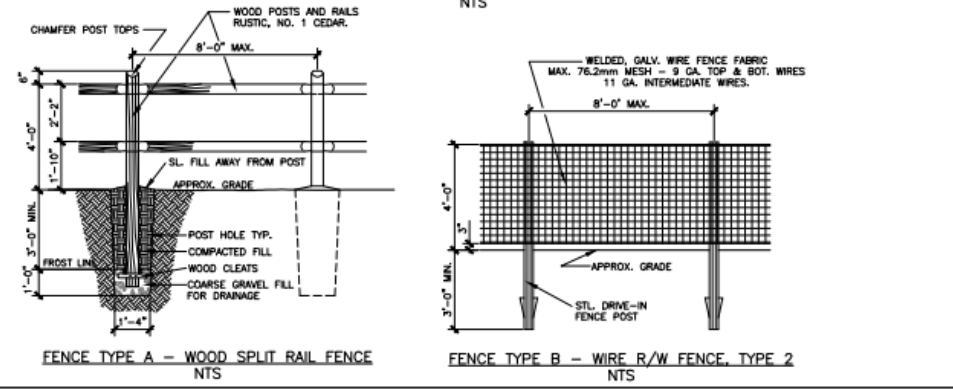
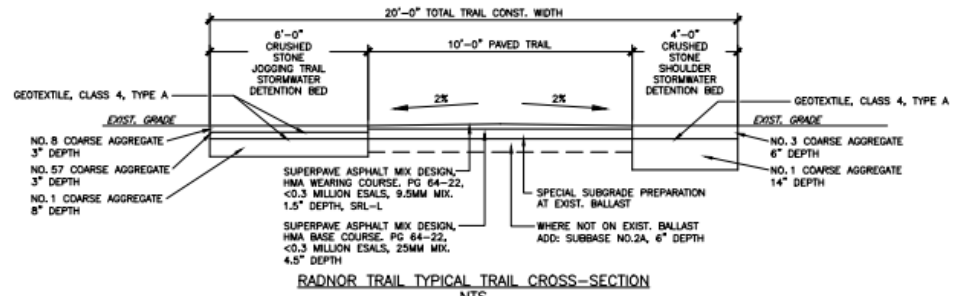
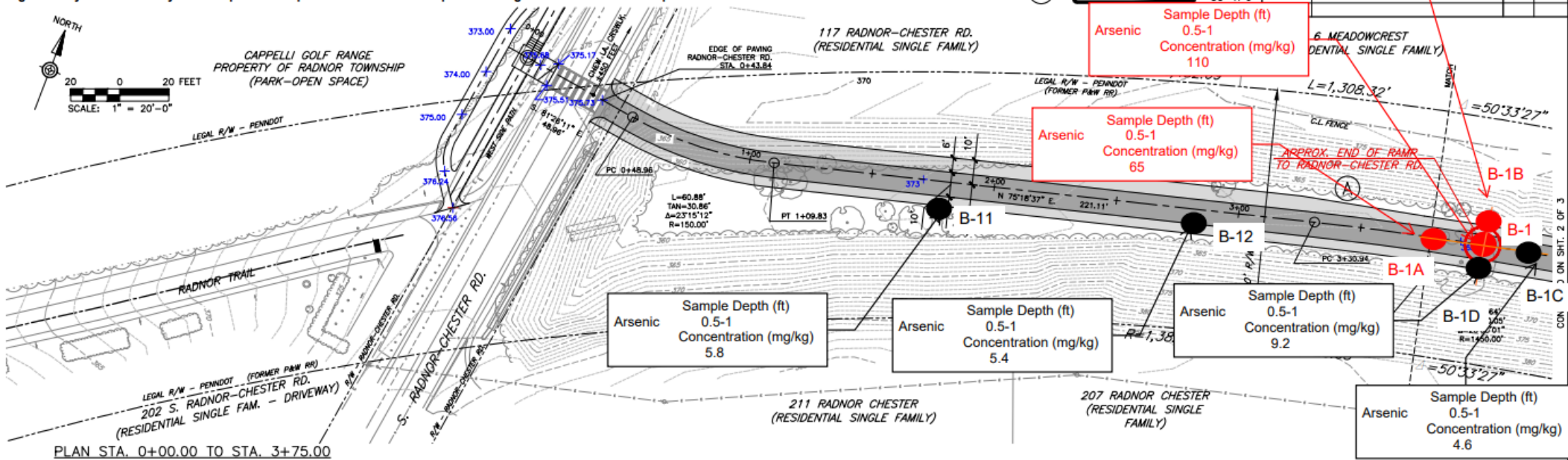
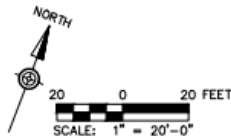
National Memorial Arch



The Radnor Trail

PRELIMINARY DESIGN

FORGE TO REFUGE TRAIL - Valley Forge National Historical Park to John Heinz National Wildlife Refuge
SECTION - RADNOR TRAIL EXTENSION, Radnor, Pennsylvania
 Approximate length 1700 feet (0.32 miles)
 Right of Way Owner: Pennsylvania Dept. of Transportation Trail Development/Management: Radnor Township



CT & C Campbell Thomas & Co.
 1504 South Street, Philadelphia, PA
 Architecture • Preservation • Community & Transportation Planning
 Phone: 215-545-1076 • Website: www.campbellthomas.com

PRELIMINARY DESIGN

FORGE TO REFUGE TRAIL - Valley Forge National Historical Park to John Heinz National Wildlife Refuge

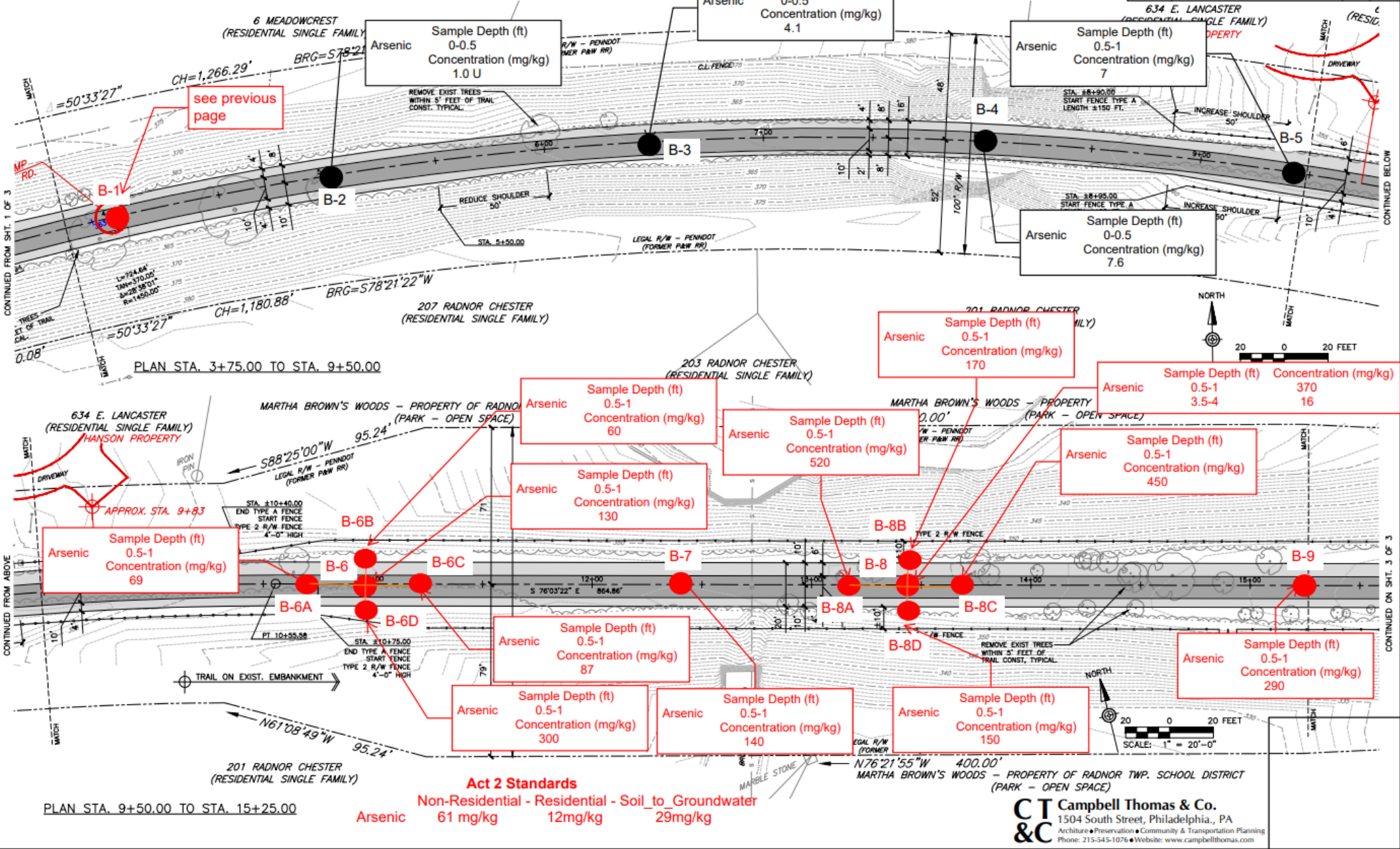
SECTION - RADNOR TRAIL EXTENSION, Radnor, Pennsylvania

Approximate length 1700 feet (0.32 miles)

Right of Way Owner: Pennsylvania Dept. of Transportation Trail Development/Management: Radnor Township

DISTRICT	COUNTY	ROUTE	SECTION	SHEET
6-0	DELAWARE	???	???	2 OF 3

RADNOR TOWNSHIP		
REVISION NUMBER	REVISIONS	DATE BY



© 2019 CAMPBELL THOMAS & CO. ALL RIGHTS RESERVED.

CT Campbell Thomas & Co.
 1504 South Street, Philadelphia, PA
 Architecture • Preservation • Community & Transportation Planning
 Phone: 215-545-1076 • Website: www.campbellthomas.com

PRELIMINARY DESIGN

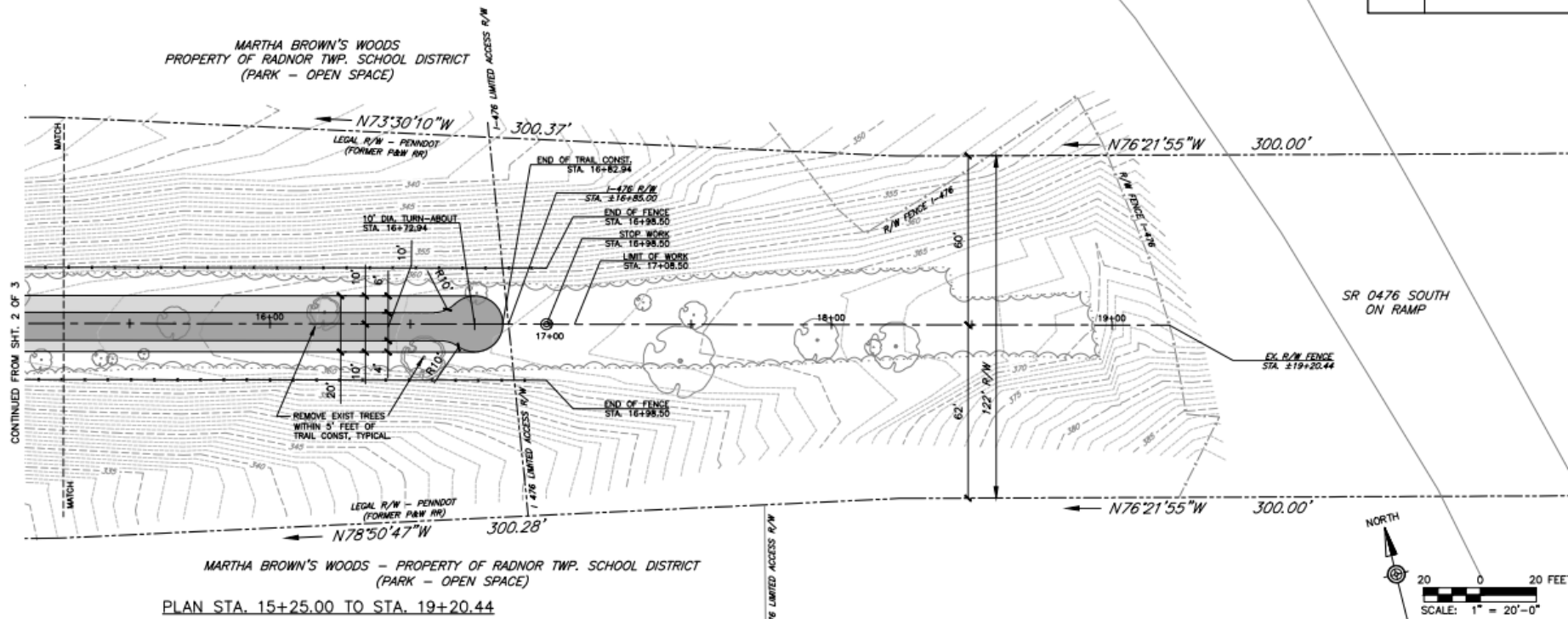
FORGE TO REFUGE TRAIL - Valley Forge National Historical Park to John Heinz National Wildlife Refuge

SECTION - RADNOR TRAIL EXTENSION, Radnor, Pennsylvania

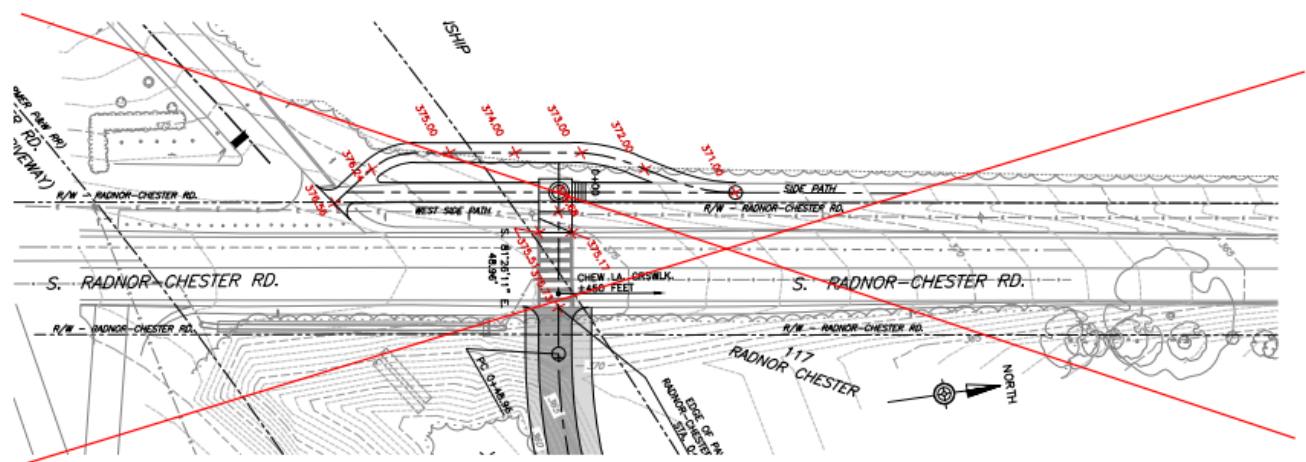
Approximate length 1700 feet (0.32 miles)

Right of Way Owner: Pennsylvania Dept. of Transportation Trail Development/Management: Radnor Township

DISTRICT	COUNTY	ROUTE	SECTION	SHEET	
6-0	DELAWARE	???	???	3 OF 3	
RADNOR TOWNSHIP					
REVISION NUMBER	REVISIONS			DATE	BY

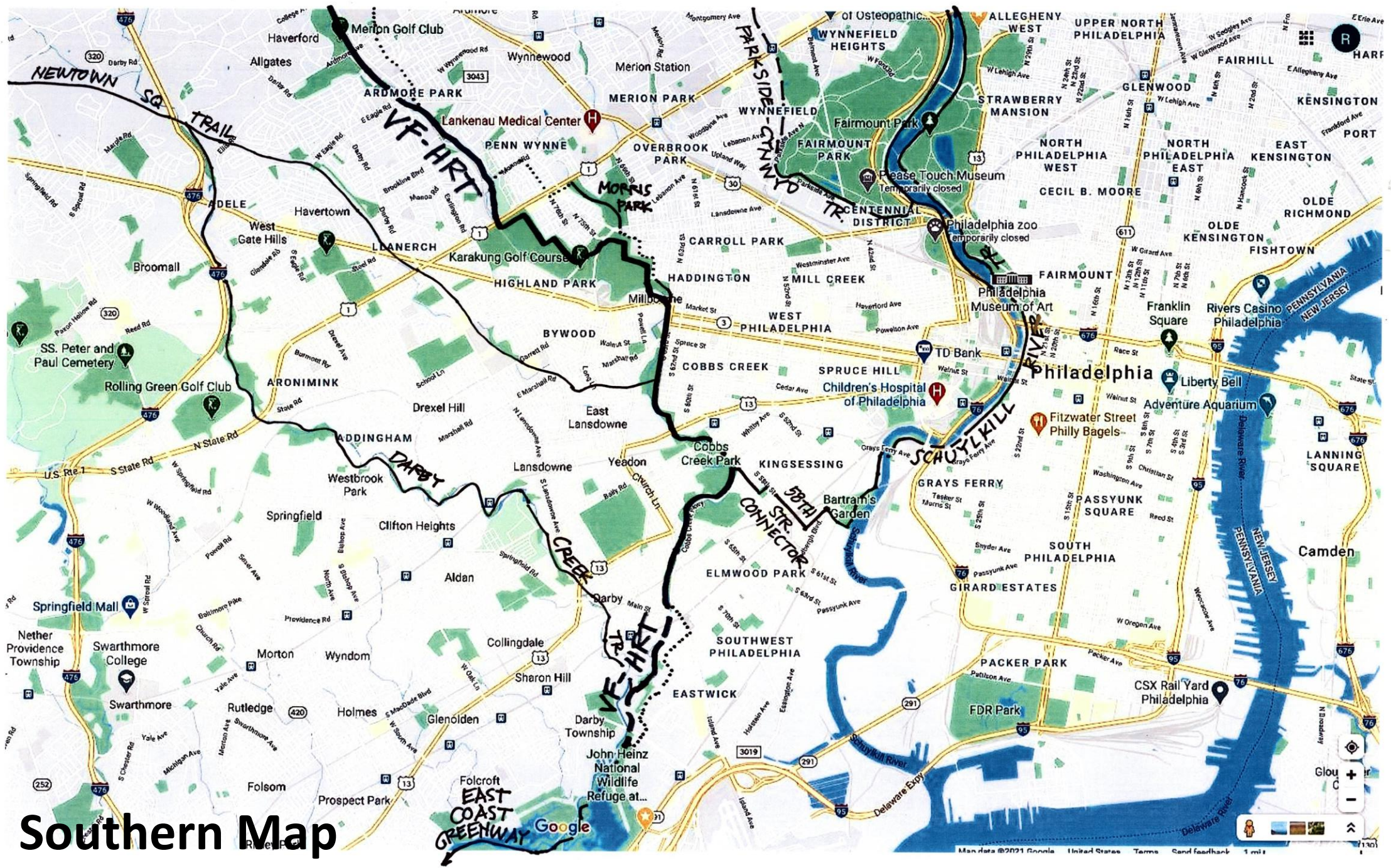


PLAN STA. 15+25.00 TO STA. 19+20.44



©2019 CAMPBELL THOMAS & CO. ALL RIGHTS RESERVED

CT & C Campbell Thomas & Co.
 1504 South Street, Philadelphia, PA
 Architecture • Preservation • Community & Transportation Planning
 Phone: 215-545-1076 • Website: www.campbellthomas.com



Southern Map

Google

Norristown High Speed Line with Existing Access Path



Cobbs Creek Golf Course.





The Cobbs Creek Trail Below Baltimore Avenue



Cobbs Creek Parkway and Trail – Before and After

John Heinz NWR



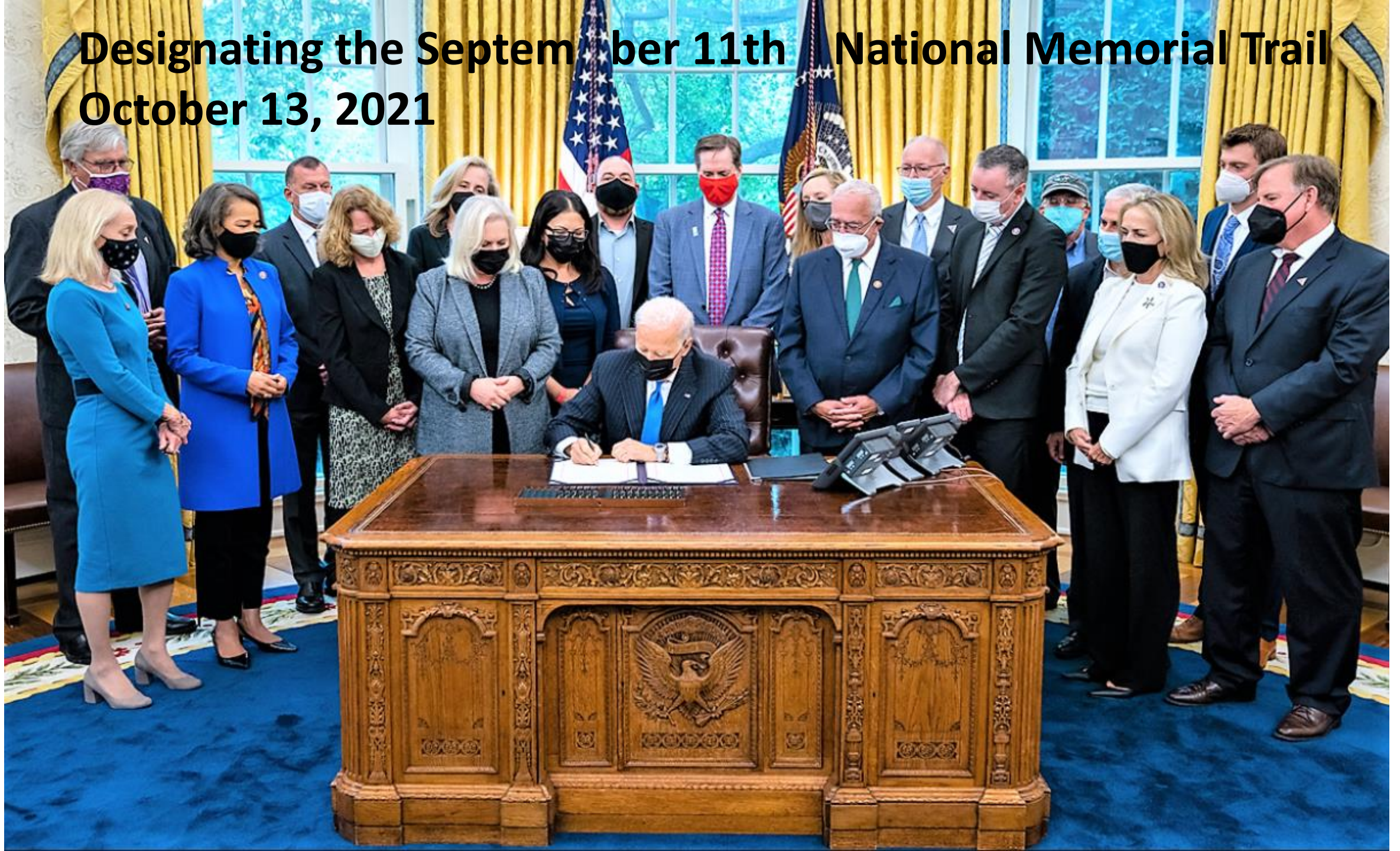
"As a member of the 9/11 Commission, I am proud and delighted to support the 9/11 National Memorial Trail. This important project will bring together the three September 11th memorials in Virginia, Pennsylvania, and New York as one great national memorial. This is an example of America working together and communities connecting together in one vibrant celebration of life."

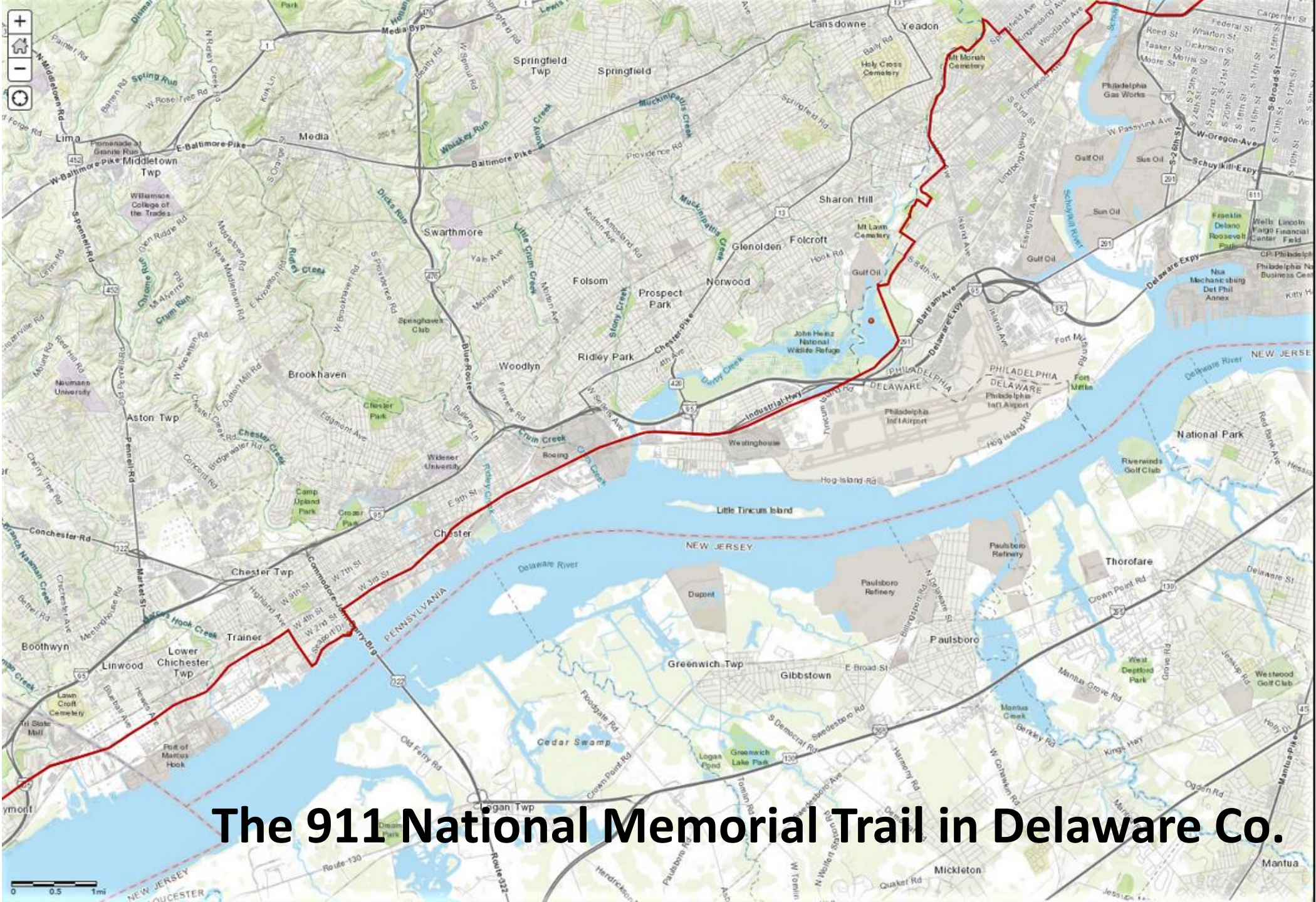
— John Lehman
September 11th National Memorial Trail Alliance, 9/11 Commission, Former Secretary of the Navy



The September 11th National Memorial Trail

Designating the September 11th National Memorial Trail October 13, 2021





The 911 National Memorial Trail in Delaware Co.