

Delaware County Update

Philadelphia Western Suburbs Trail Summit
February 4, 2023

Elaine Paul Schaefer, Vice Chair, Delaware County Council
Gina Burritt, Delaware County Director of Planning
Steve Beckley, Delaware County Planning Department



Delco is Stepping Up!

Elaine Paul Schaefer
Vice Chair, Delaware County Council

DELCO GREEN WAYS





Three Rounds

\$16.9m
granted

\$33.7m
total investment



Delco's New Park

Gina Burritt
Delaware County, Director of Planning



Former Don Guanella Property

- 213 acres
- New County Parkland acquired in 2021
- Potential hub in Trail Network
- Master Plan Process started; anticipated completion June 2023



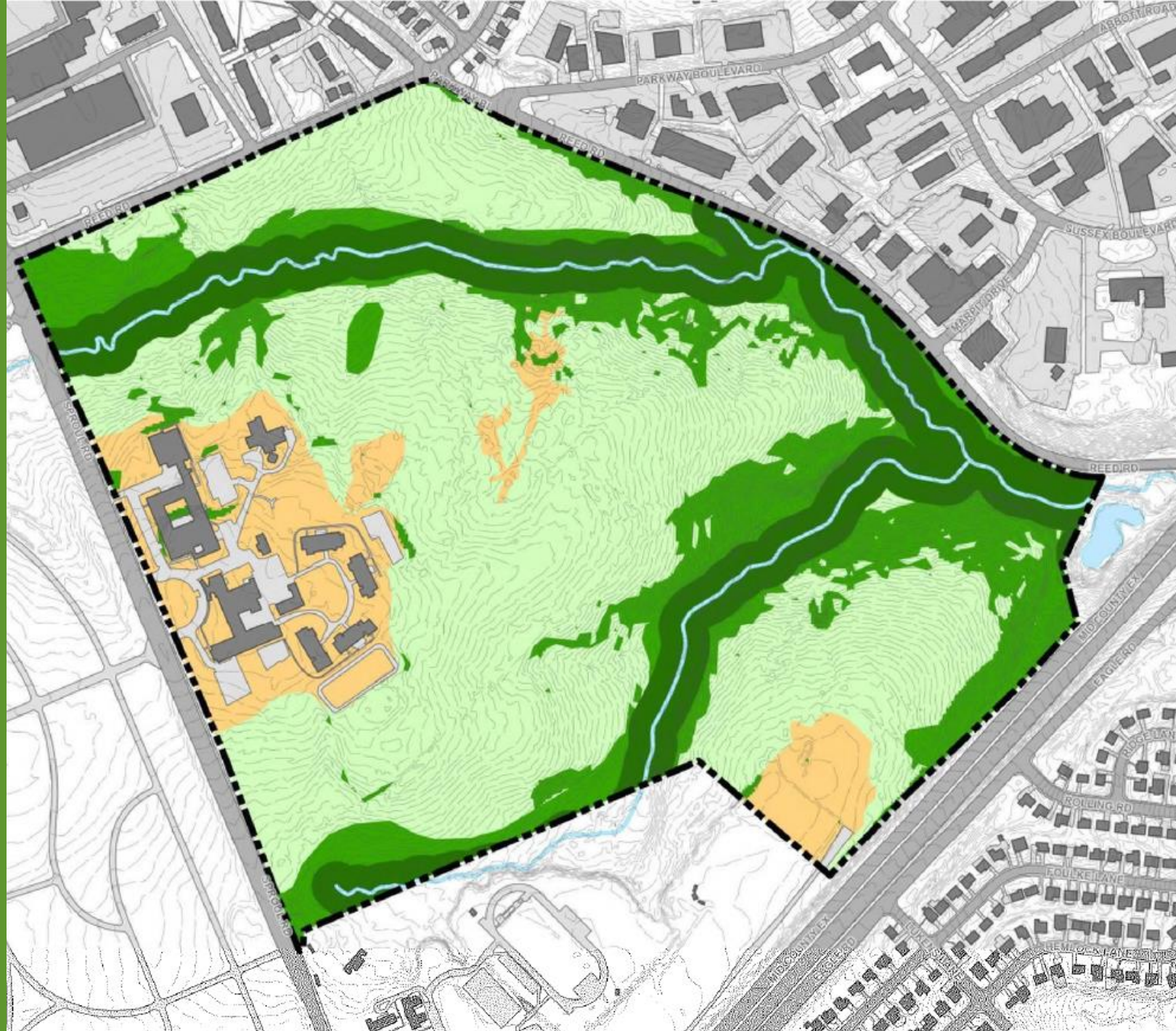


Public Input for the Master Plan

- Public Open House held January 14th, additional “pop up” open house sessions being scheduled.
- Online Survey coming soon
- Park Naming Contest to be held
- Second of round of public outreach anticipated in Spring



From
Preliminary Site
Assessment

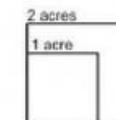


Park Activity Zones

Don Guanella
Park Master Plan

Legend

- Don Guanella Site Boundary
- Building Footprints
- Road Surface
- Driveways and Parking Lots
- Ponds
- Streams
- 2-ft. Contours
- High Activity Zone (31.6 ac.)
- Medium Activity Zone (111.4 ac.)
- Low Activity Zone (37.2 ac.)
- No Activity Zone (36.2 ac.)



TOOLE
Interaction Planning

URBAN PARTNERS

Natural
Lands

JMT

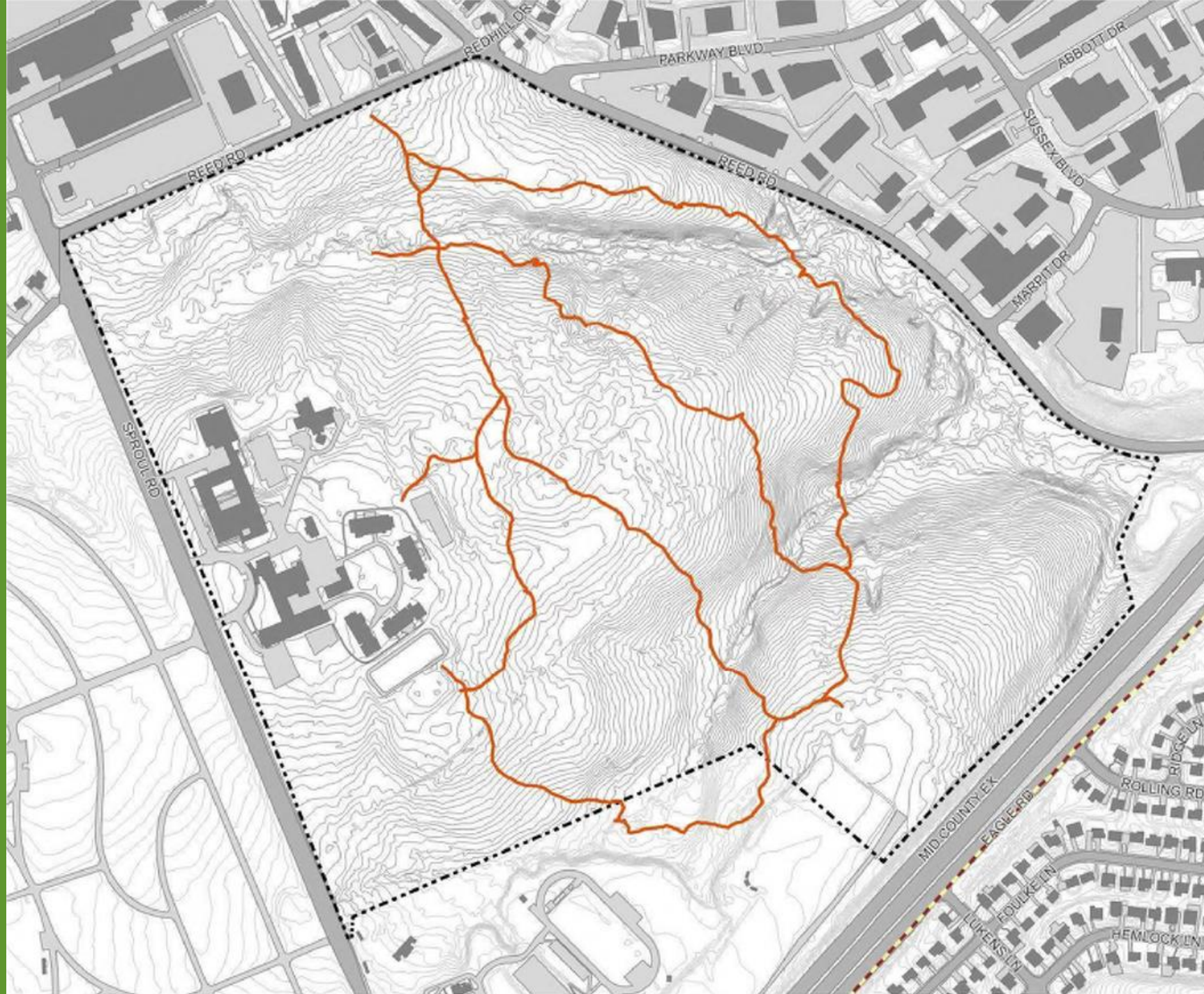
Scale: 1" = 400'

0 400 800 Feet



Disclaimer: This map is for analytical purposes only. The reliability of this map depends on the accuracy of the underlying data sources which have not been verified. It is not a Legal Survey, nor is it intended to be or replace a Legal Survey.

Mapped Existing Hiking Paths

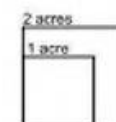


Trail Map

Don Guanella Park Master Plan

Legend

- Don Guanella Site Boundary
- Building Footprints
- Road Surface
- Driveways and Parking Lots
- Don Guanella Trails
- Primary Trail #15 - Blue Route Bikeway
- Smedley to Darby Creek
- 2-ft. Contours



Scale: 1" = 400'



Disclaimer: This map is for analytical purposes only. The reliability of this map depends on the accuracy of the underlying data sources which have not been verified. It is not a Legal Survey, nor is it intended to be or replace a Legal Survey.



Delco Trash Transfer Station

Incinerator Field
(Delco Parks)
16 ac, appr.

Merry Place & Darby
Creek Trail
(Haverford)

Jack McDonald Field
(Haverford)

Don Guanella Site
213 acres

Potential Trail Concept - Smedley to Darby Creek segment

Pilgrim Park
(Haverford/Upper Darby)



Current County Trail Projects

Steven R. Beckley, AICP
Open Space and Trails Manager

2023 County-Led Trail Projects

- Chester Creek Trail
- Darby Creek Trail
- Media-Smedley Connector Trail
- East Coast Greenway

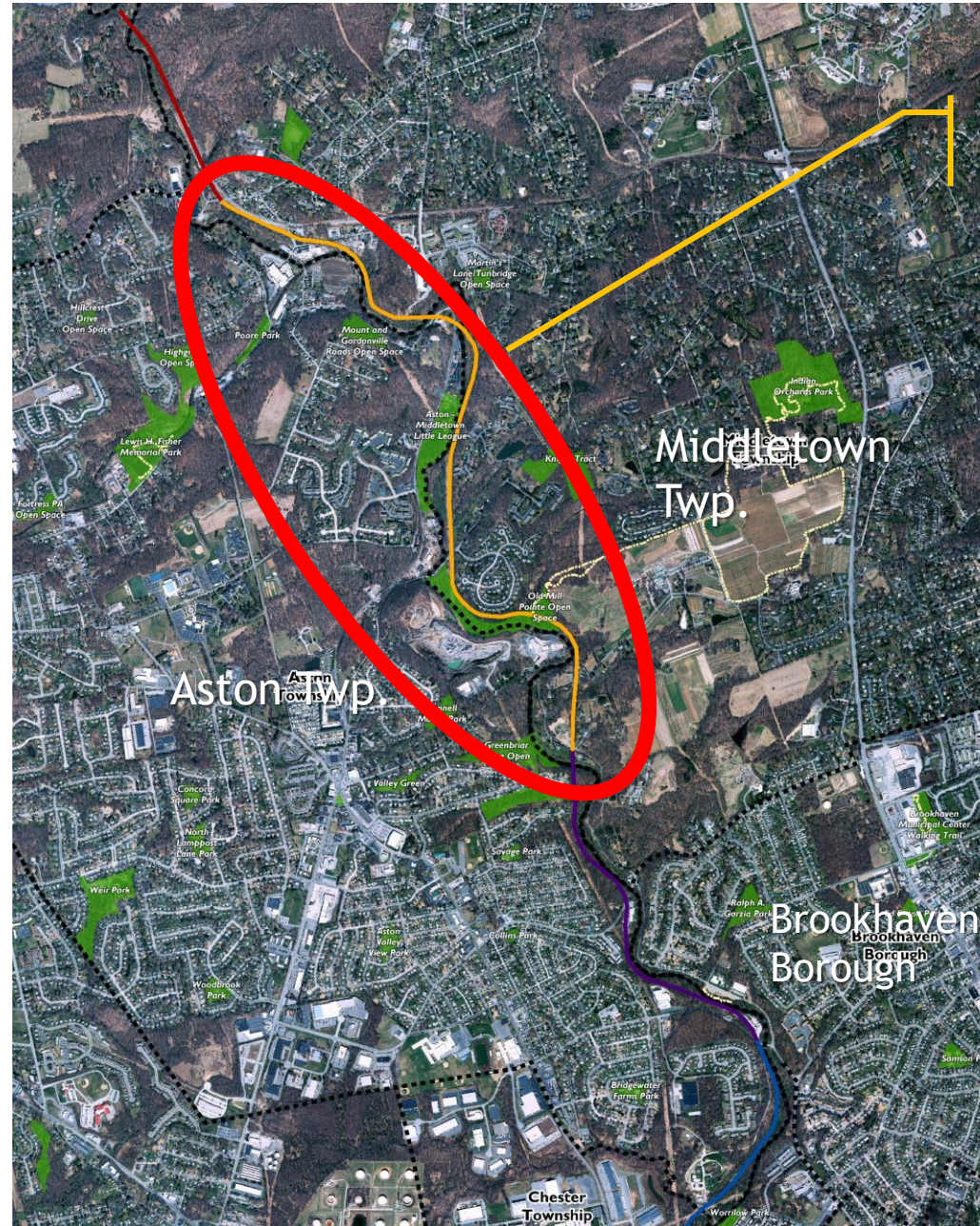




Chester Creek Trail
2002 Feasibility
Study
Focus Area



Phase 1 -
Opened
Spring, 2017



Knowlton Road Trailhead

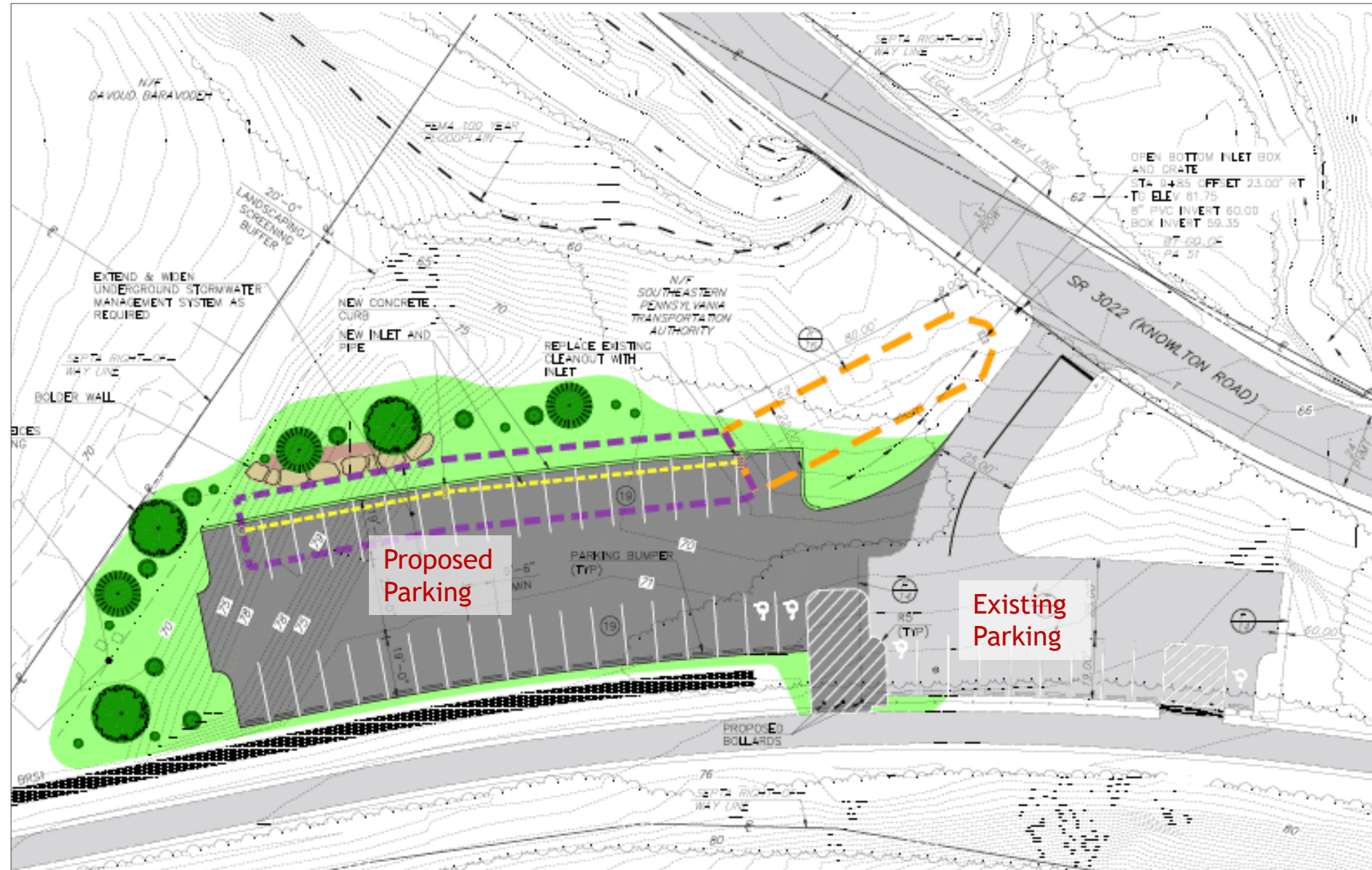


Project Site
extends to
right of
frame.

Trail at back
of frame.

Trailhead
access
driveway in
foreground

Knowlton Road Trailhead



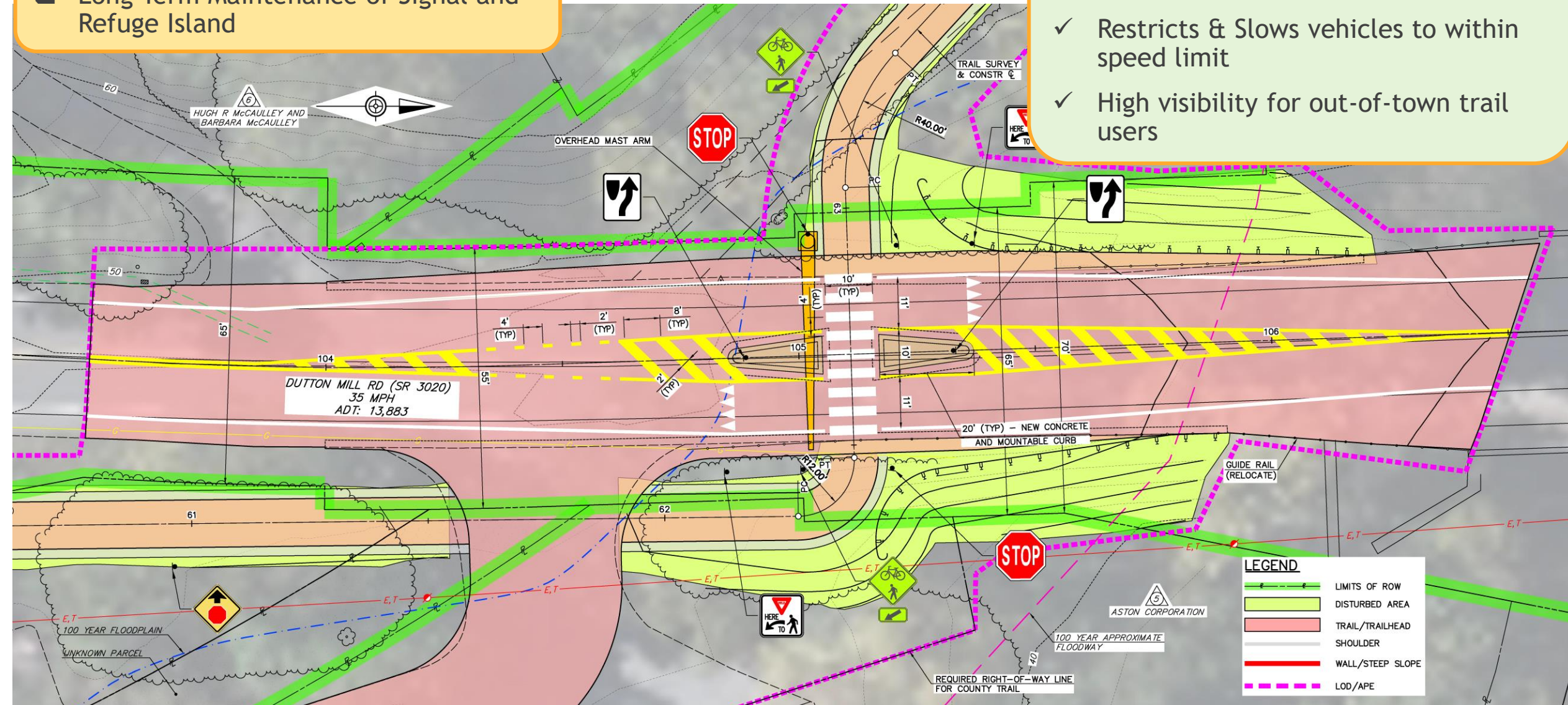
CHESTER CREEK TRAIL, Phase 2



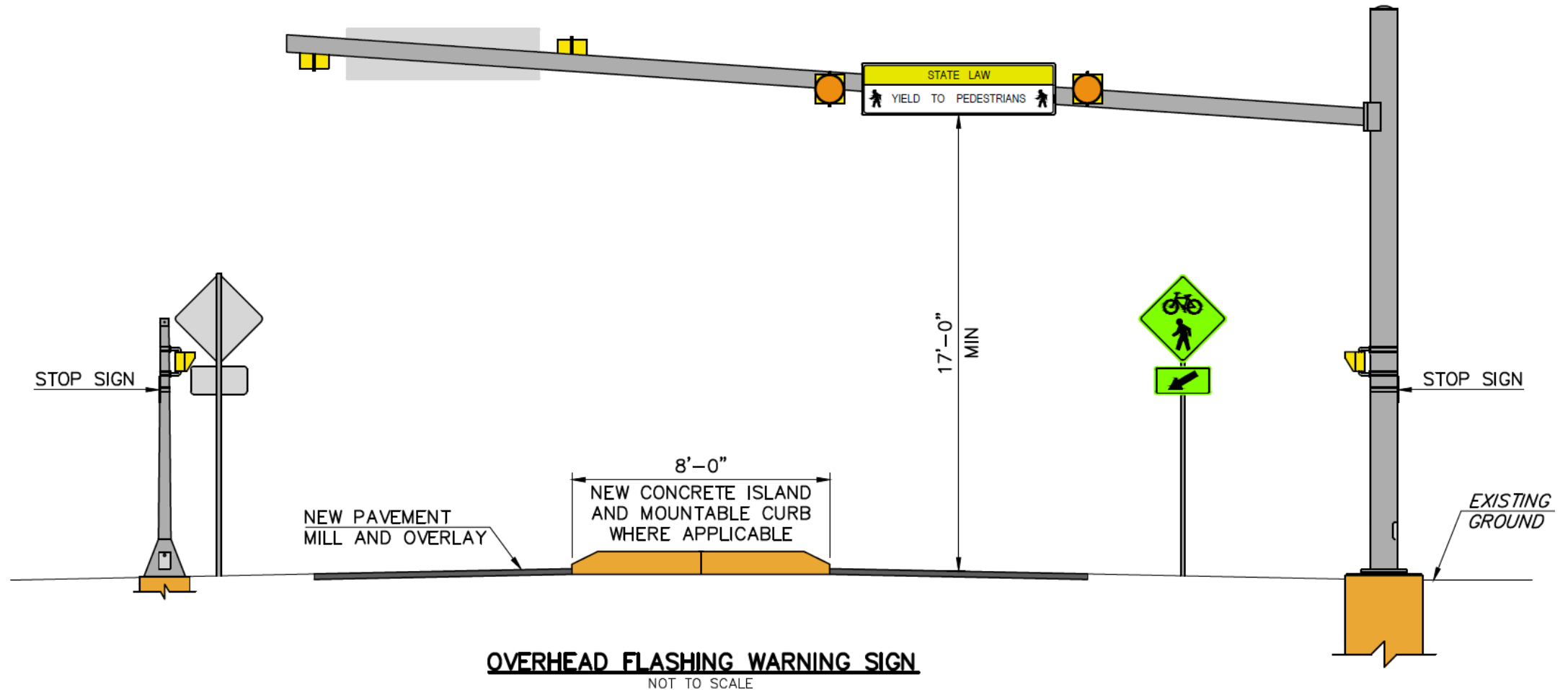
CHESTER CREEK TRAIL, Phase 2 – Dutton Mill Road

- ❑ High volume roadway
- ❑ Long Term Maintenance of Signal and Refuge Island

- ✓ Provides visible, controlled, and safer crossing
- ✓ Restricts & Slows vehicles to within speed limit
- ✓ High visibility for out-of-town trail users



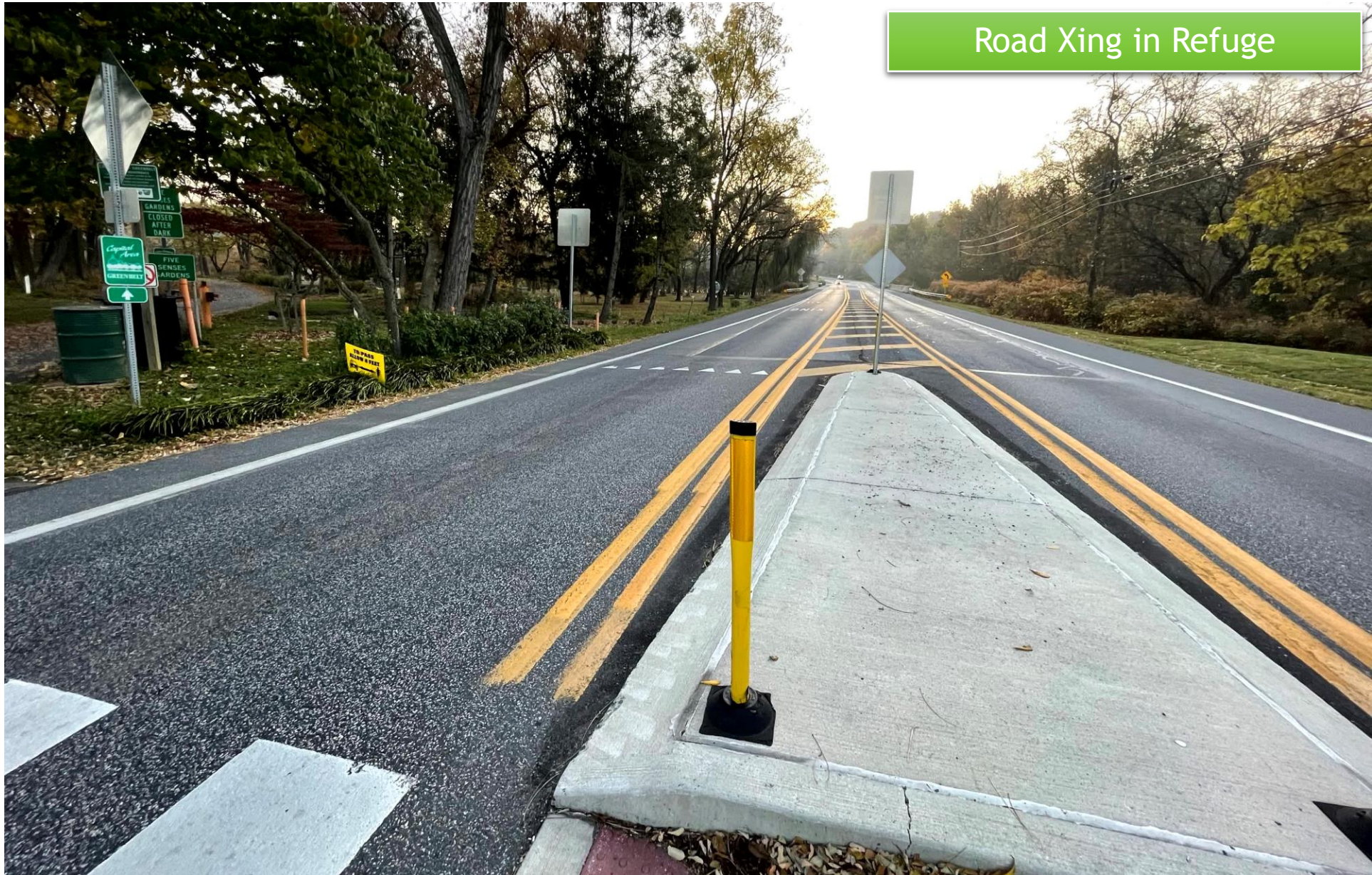
Phase 2 – Dutton Mill Road Crossing



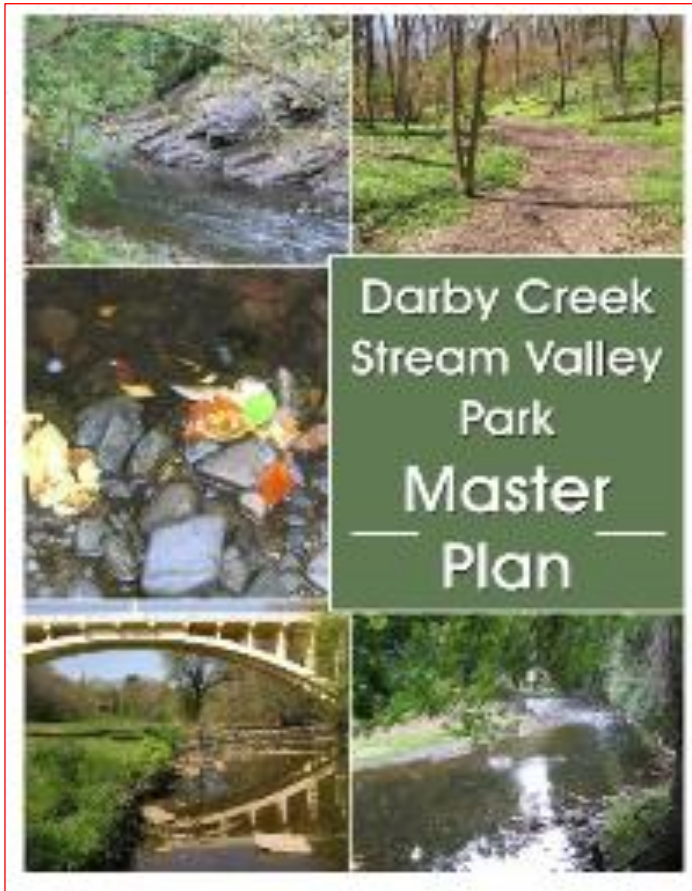
Capital Area Greenbelt - Harrisburg, PA



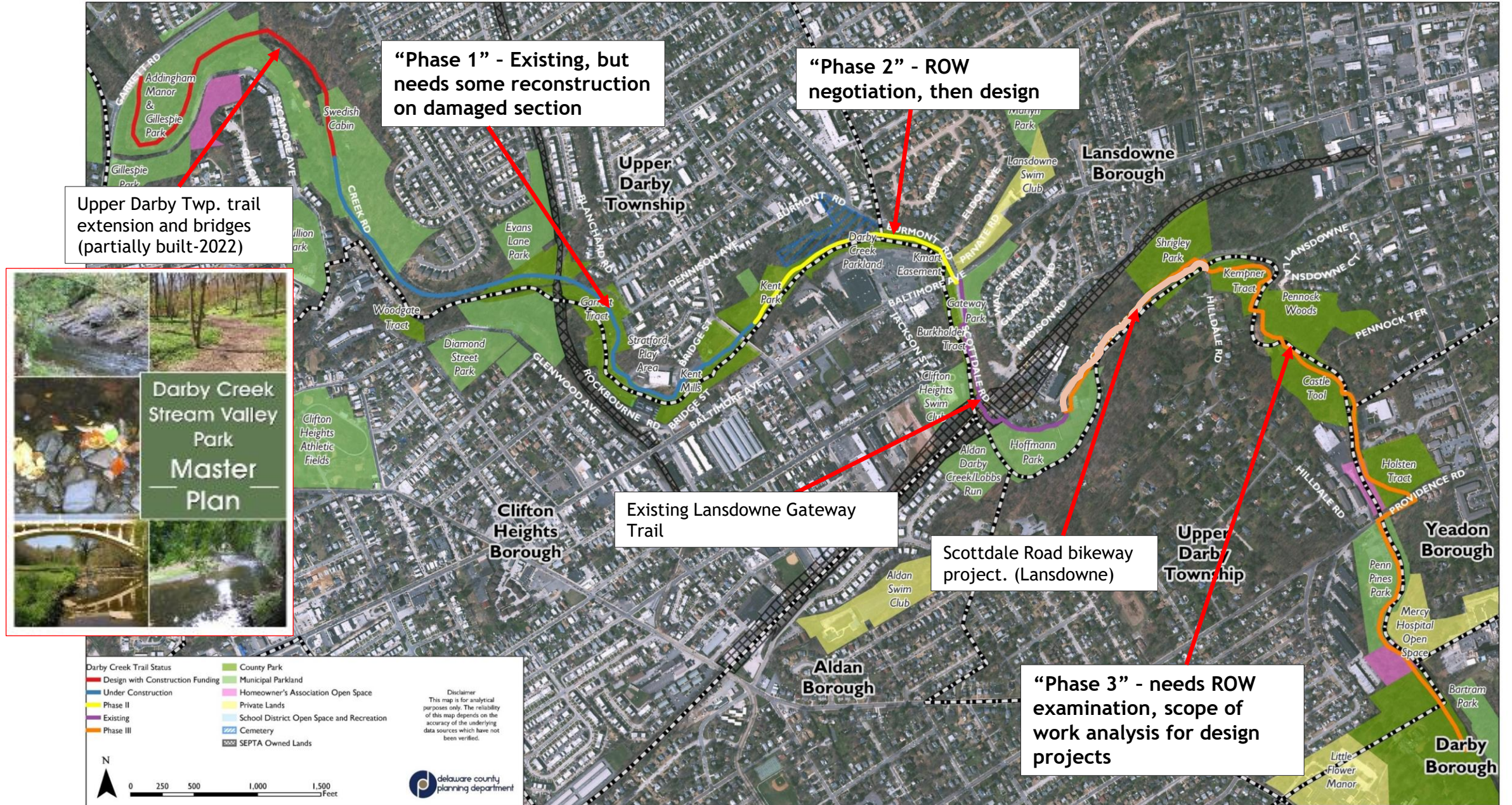
Road Xing in Refuge



DARBY CREEK TRAIL



DARBY CREEK TRAIL



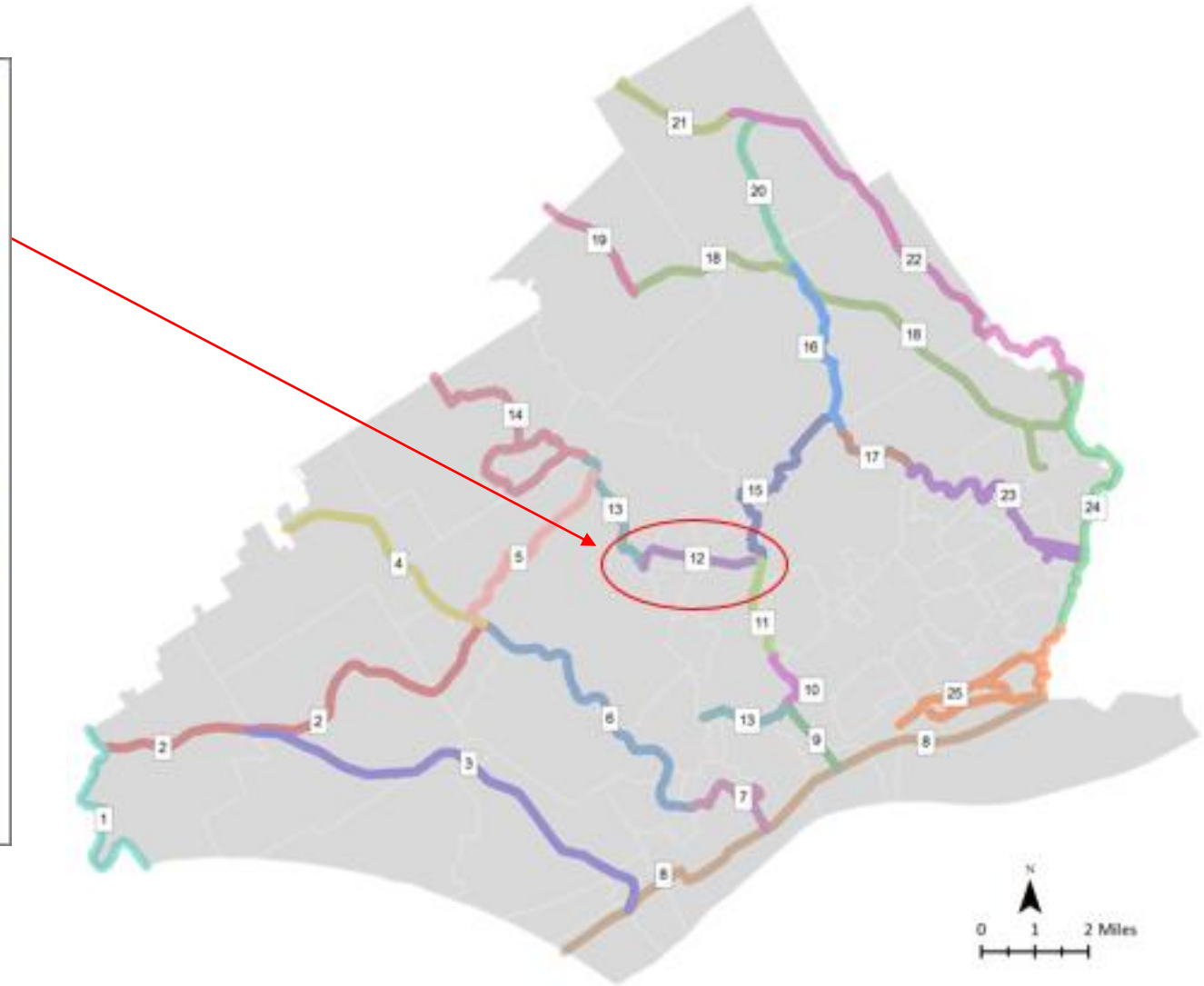
DARBY CREEK TRAIL - Phase 2



DARBY CREEK TRAIL - Phase 2

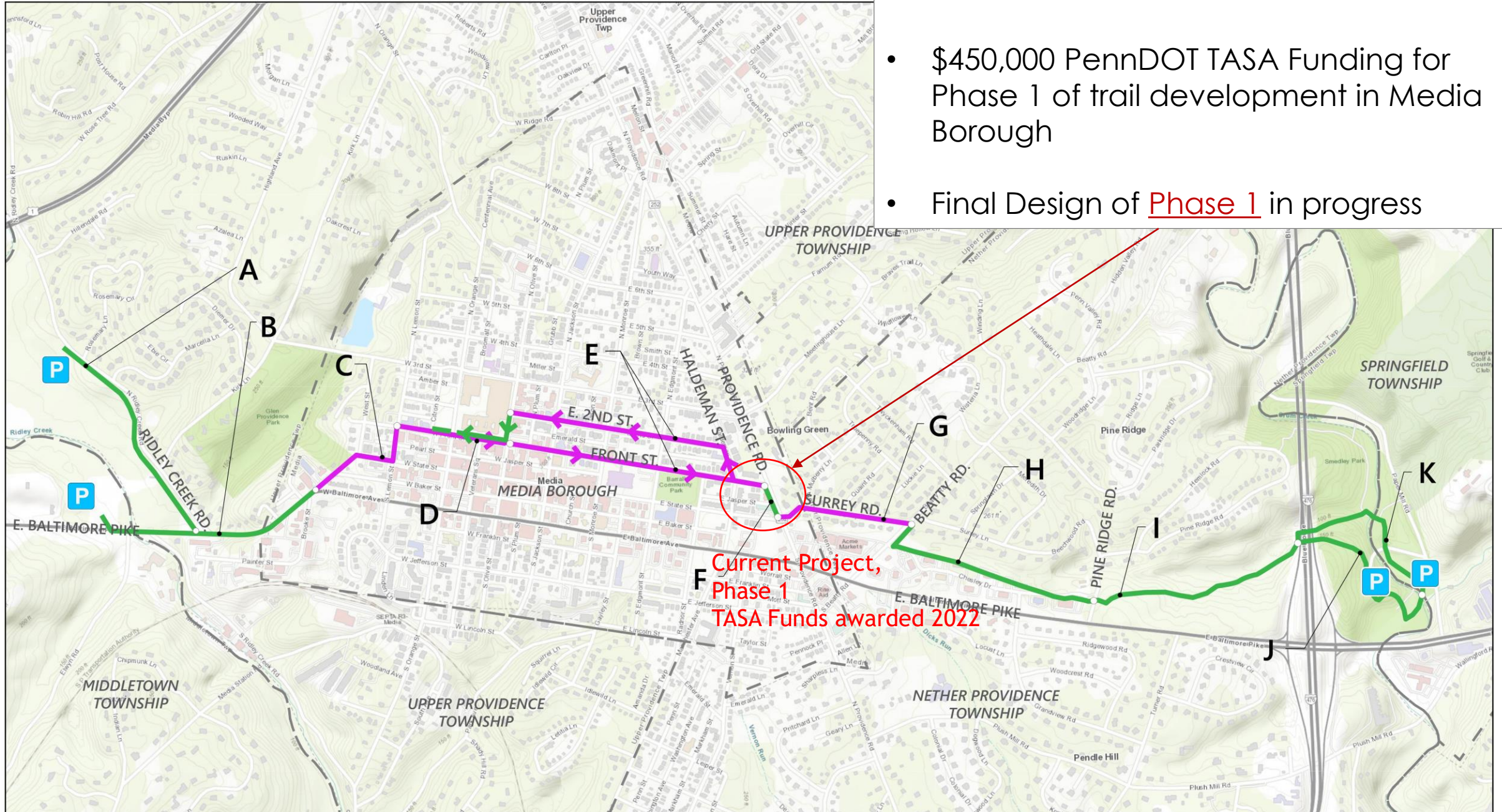


MEDIA-SMEDLEY CONNECTOR TRAIL

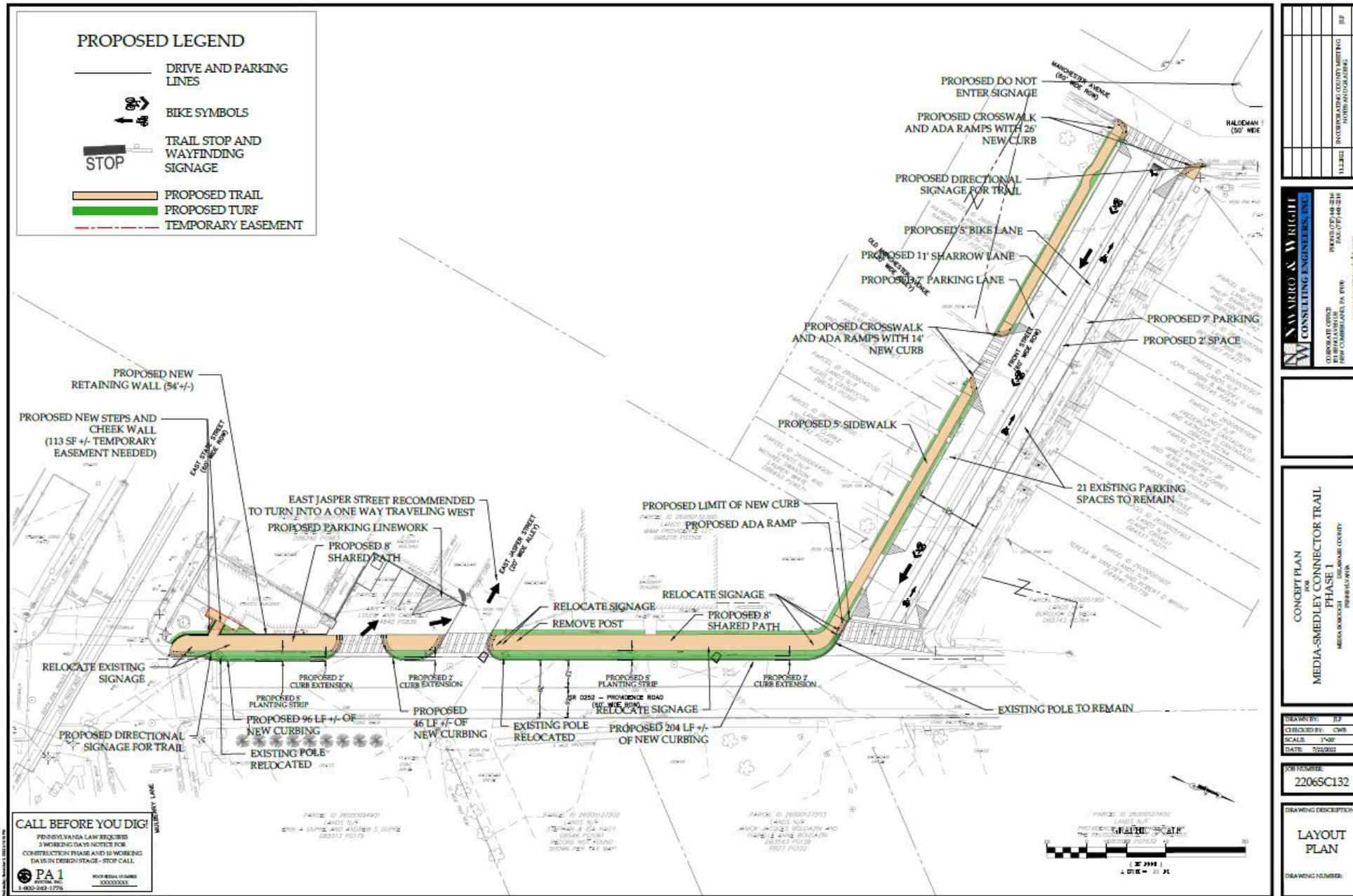


MEDIA-SMEDLEY CONNECTOR TRAIL

- \$450,000 PennDOT TASA Funding for Phase 1 of trail development in Media Borough
- Final Design of Phase 1 in progress



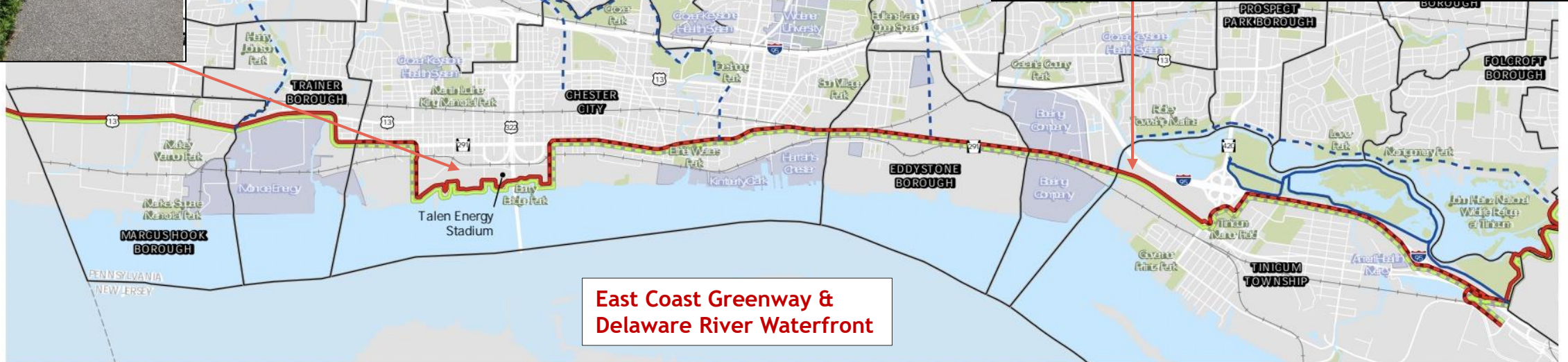
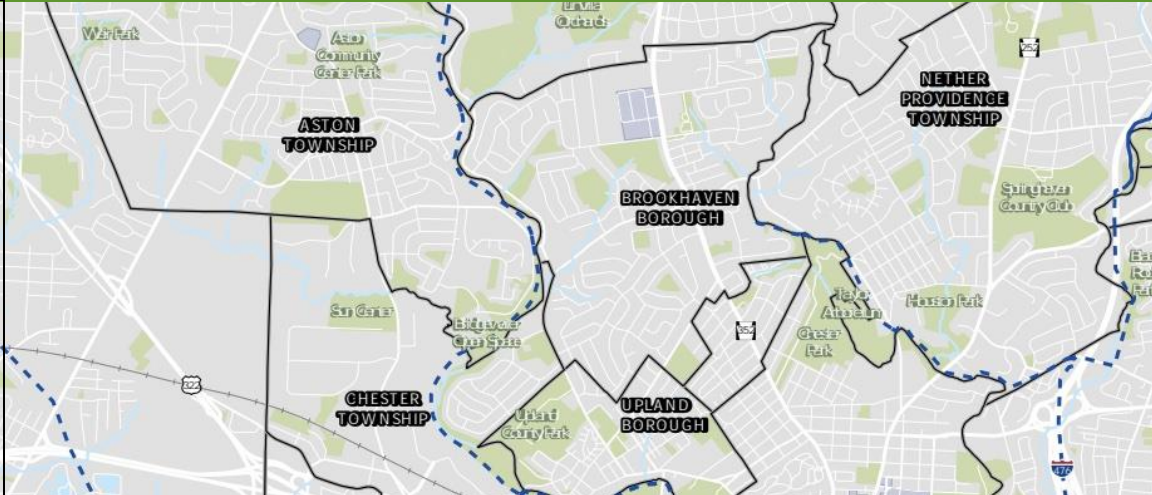
MEDIA-SMEDLEY CONNECTOR TRAIL – Phase 1



East Coast Greenway

Gina Burritt
Delaware County, Director of Planning

EAST COAST GREENWAY



East Coast Greenway & Delaware River Waterfront

East Coast Greenway

- Existing
- Proposed

September 11th National Memorial Trail

- Existing
- Proposed

Delaware County Primary Trail Network

- Existing
- Proposed

- Streams
- Rail Lines

- Municipal Boundary
- Major Employers

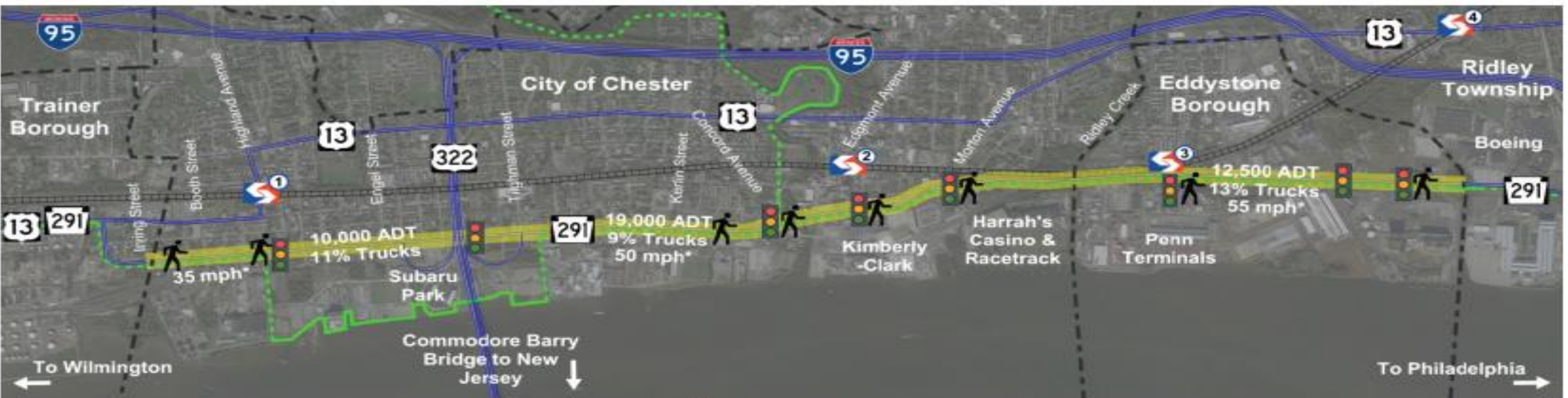
Open Space/Parks



November 2018

EAST COAST GREENWAY

Route 291 Road Diet Study



- Study Area (including East Coast Greenway Study)
- Major Roadway
- Planned Trail
- Existing Trail
- Existing Signal
- Existing Marked Crossing

- 1 Highland Ave Station
- 2 Chester Transportation Center
- 3 Eddystone Station
- 4 Crum Lynne Station

KITTELSON
& ASSOCIATES

EAST COAST GREENWAY

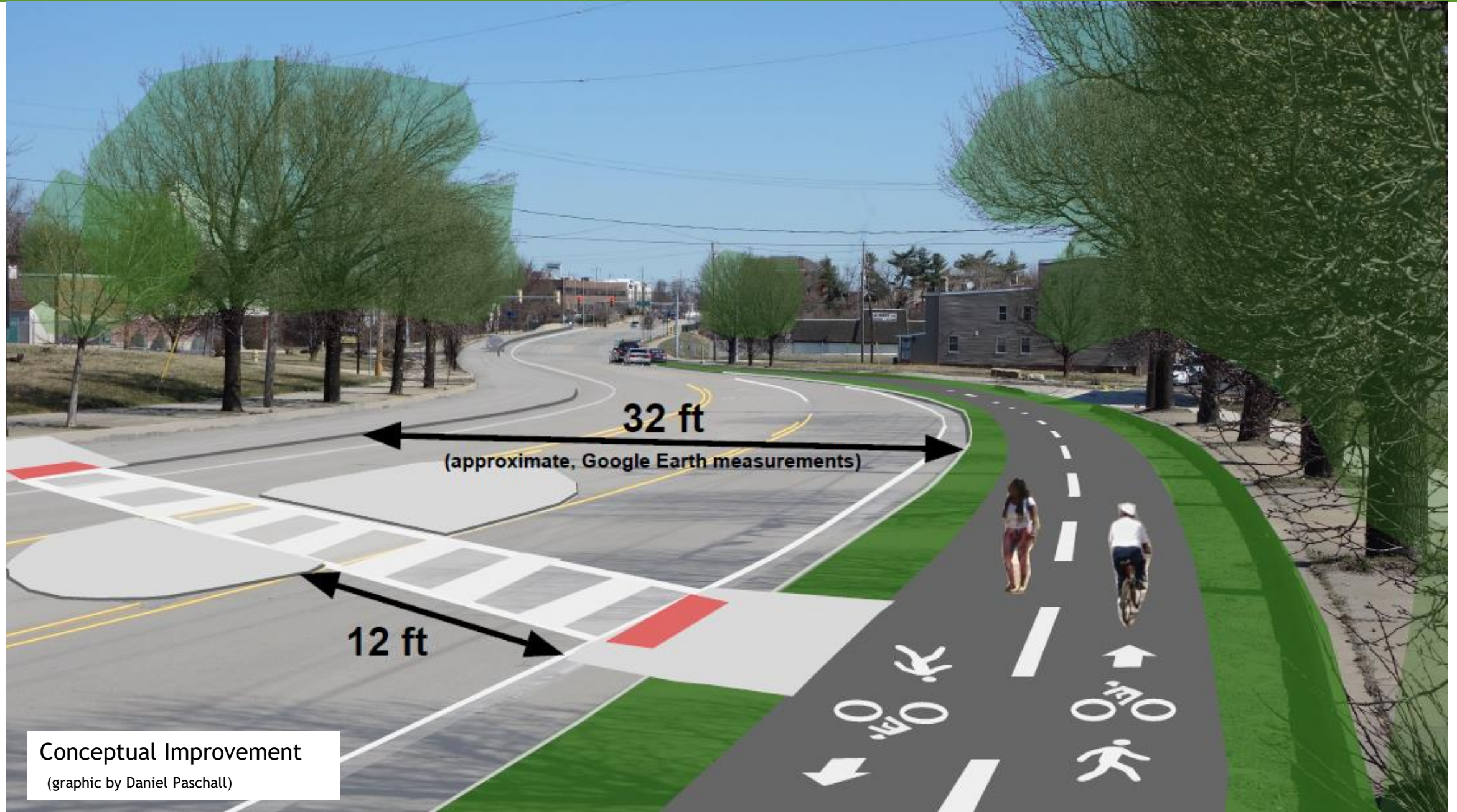
PA 291 in City of Chester

66 ft

(approximate, Google Earth measurements)

Photo/Graphic: Daniel Paschall

EAST COAST GREENWAY



Conceptual Improvement

(graphic by Daniel Paschall)

EAST COAST GREENWAY

Ridley Twp./Boeing/County Coordination



Existing Conditions, view east from a point near Crum Creek. (Google Maps, 2020)

EAST COAST GREENWAY

Marcus Hook

PennDOT Rt. 13 Repaving/Re-stripping to Improve ECG Bike Lanes



Existing Conditions, view southwest near PA/DE state line. (Google Maps, 2020)

EAST COAST GREENWAY

Tinicum Township – ECG Feasibility Study



Figure 1: Examples of Approximate Alignments

Source: Traffic Planning & Design, Inc.

Find out more!

1. Office of Sustainability

<https://delcopa.gov/sustainability/>

- a. Sustainability Hub
- b. Conference Materials
- c. Becoming Sustainable (Links & Tools)

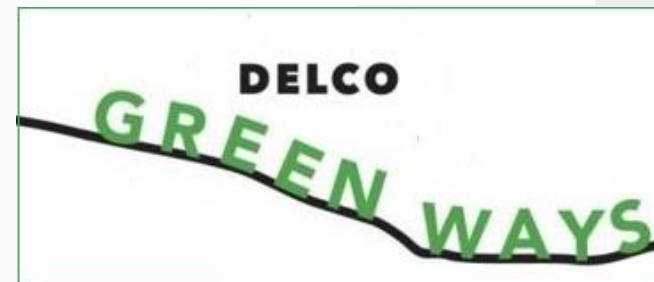
Access the
Sustainability Hub

2. Planning Department

<https://delcopa.gov/planning/>

- a. Mapping & Data Portal
- b. Publications
- c. Delco Green Ways Grant Program

Access the Mapping
and Data Portal



Gina Burritt, Director of Planning
burrittg@co.delaware.pa.us

Steven R. Beckley, AICP, Open Space and Trails Manager
beckleys@co.delaware.pa.us

Delaware County Planning Department
www.delcopa.gov/planning

