

CHESTER TRAIL PROJECTS

**Riverfront
Alliance**
of Delaware County



Chester Creek Trail – Crozer to Deshong Park



LEGEND

- CONSTRUCTED SECTION OF TRAIL
- DESIGNED SECTION OF TRAIL
- PLANNED TRAIL CONNECTIONS
- PORTION OF TRAIL PROPOSED FOR FUNDING

**CROZER
PARK/CHESTER
CREEK TRAIL MAP**
CITY OF CHESTER
CHESTER, PA 19013
610.447.7700
DATED: JULY 2019

Chester Creek Trail – Crozer to Deshong Park

- Trail Length – 2.5 miles
- Stormwater Management Improvements
- Streambank Stabilization
- Reforestation
- Outdoor Classroom & Interpretive Signage

Chester Creek Trail – Eyre Park Levee Walk



Chester Creek Trail – Crozer Park



- Depaving of asphalt
- Outdoor classroom
- Interpretive signage
- Streambank stabilization

East Coast Greenway in Delaware County



East Coast Greenway

- Existing
- Proposed

September 11th National Memorial Trail

- Existing
- Proposed

Delaware County Primary Trail Network

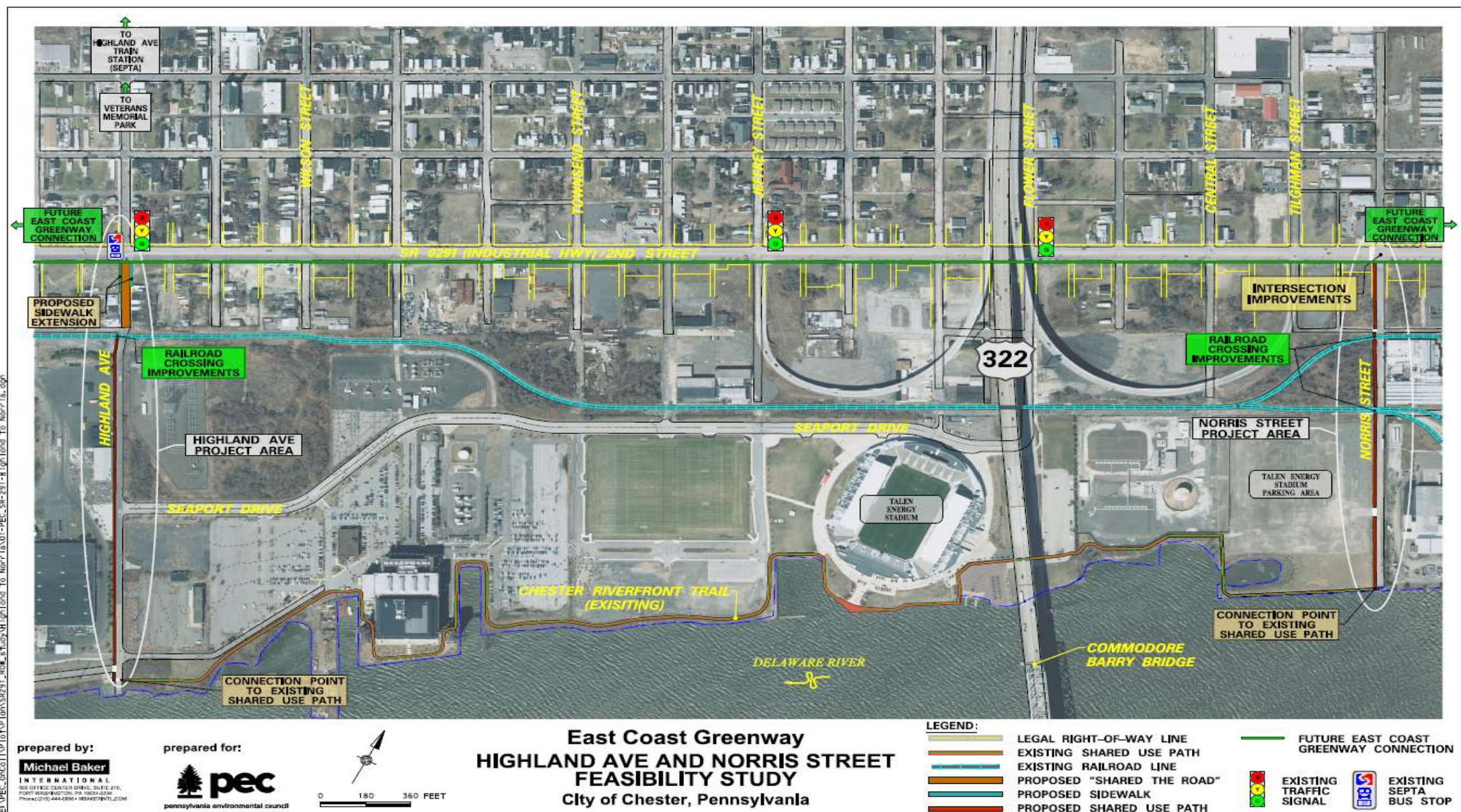
- Existing
- Proposed
- Streams
- Rail Lines

- Open Space/Parks
- Municipal Boundary
- Major Employers



November 2018

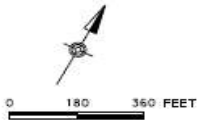
East Coast Greenway – Chester Waterfront



E:\PEC_IntCol\1101\Final\S2291_20#_study_MF_gh1and To Norris\1.01-PEC_Site-291-Final\gh1and To Norris_1.0.dgn

prepared by:
Michael Baker International
 565 OFFICE CENTER DRIVE, SUITE 210,
 FORT WASHINGTON, PA 19034-4234
 PHONE 610.444.4200 • MB@MBQI.COM

prepared for:
pec
 pennsylvania environmental council



**East Coast Greenway
 HIGHLAND AVE AND NORRIS STREET
 FEASIBILITY STUDY
 City of Chester, Pennsylvania**

LEGEND:			
	LEGAL RIGHT-OF-WAY LINE		FUTURE EAST COAST GREENWAY CONNECTION
	EXISTING SHARED USE PATH		EXISTING TRAFFIC SIGNAL
	EXISTING RAILROAD LINE		EXISTING SEPTA BUS STOP
	PROPOSED "SHARED THE ROAD"		
	PROPOSED SIDEWALK		
	PROPOSED SHARED USE PATH		

East Coast Greenway – Chester Riverwalk



Route 291 – Pedestrian Improvements & Trail

West 2nd Street



East Coast Greenway – Highland Avenue

