

A Home Rule Community – Established 1736

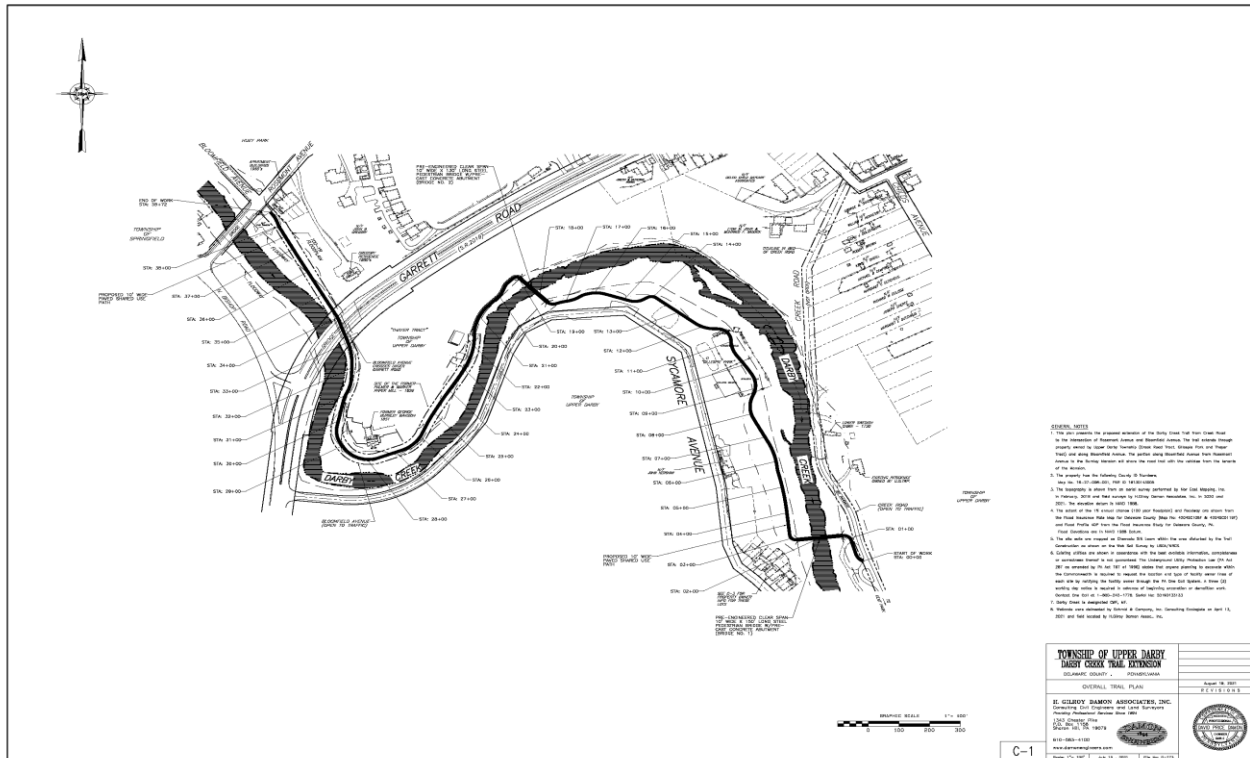
UPPER DARBY TRAILS CONNECTING COMMUNITY, ENVIRONMENT AND CULTURE

THE WORLD IN ONE PLACE

Presented By:

Vincent Rongione, Chief Administrative Officer
Michael Galante, Township Engineer

DARBY CREEK TRAIL AT GILLESPIE PARK

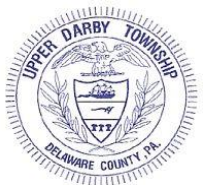


TRAIL EXTENDS FROM
ROSEMONT AVENUE
THROUGH GILLESPIE PARK
TO SWEDISH CABIN

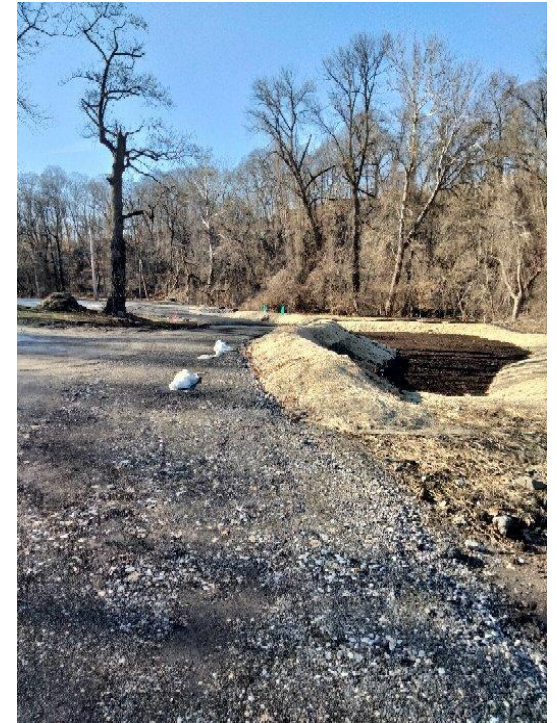
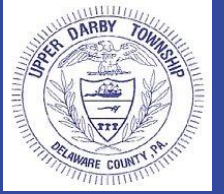
0.75 MILES

TWO (2) BIO-RETENTION
BASINS AND BIO-SWALE

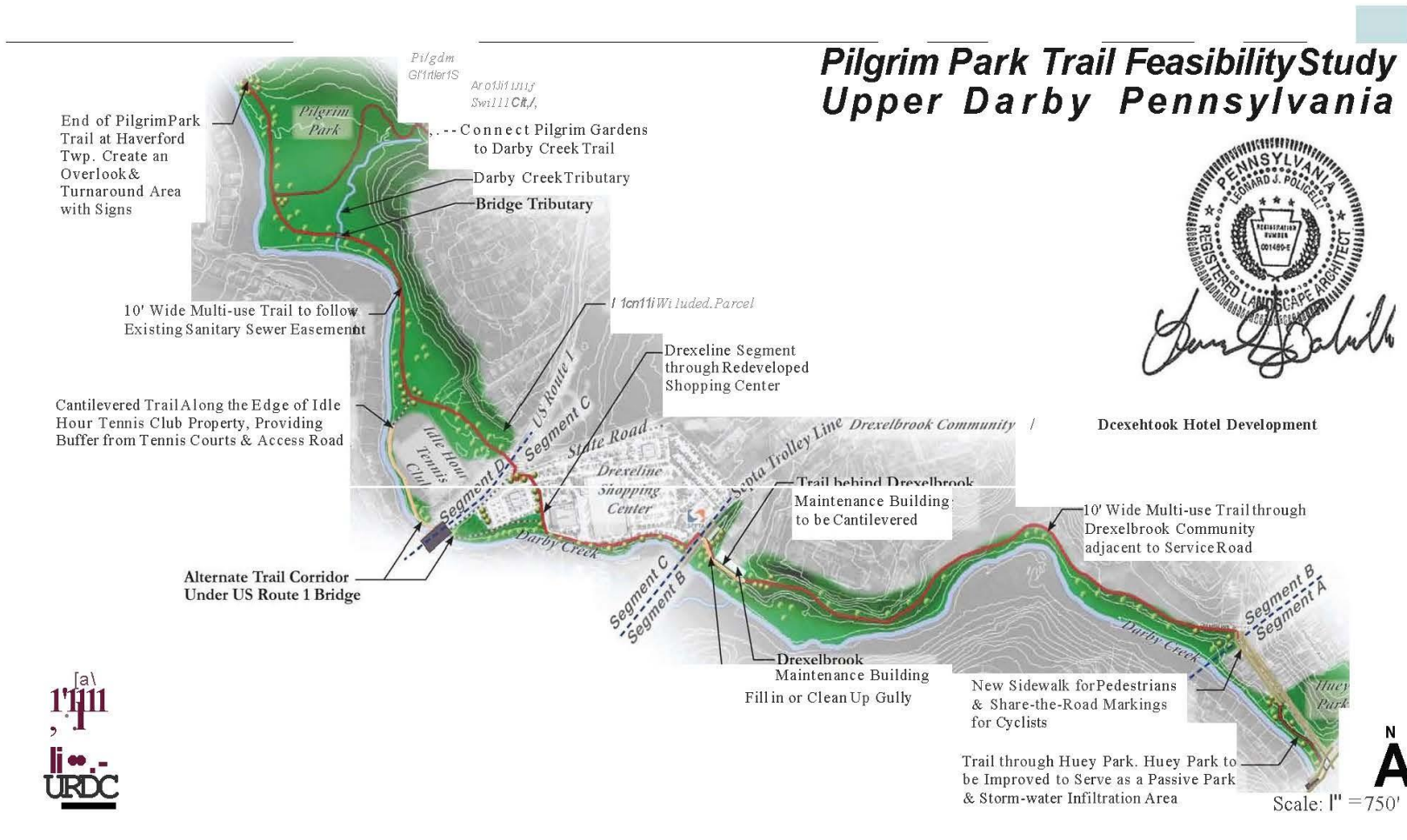
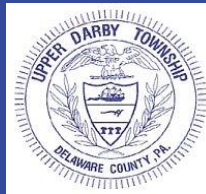
130' AND 150', 10' WIDE
PEDESTRIAN BRIDGE



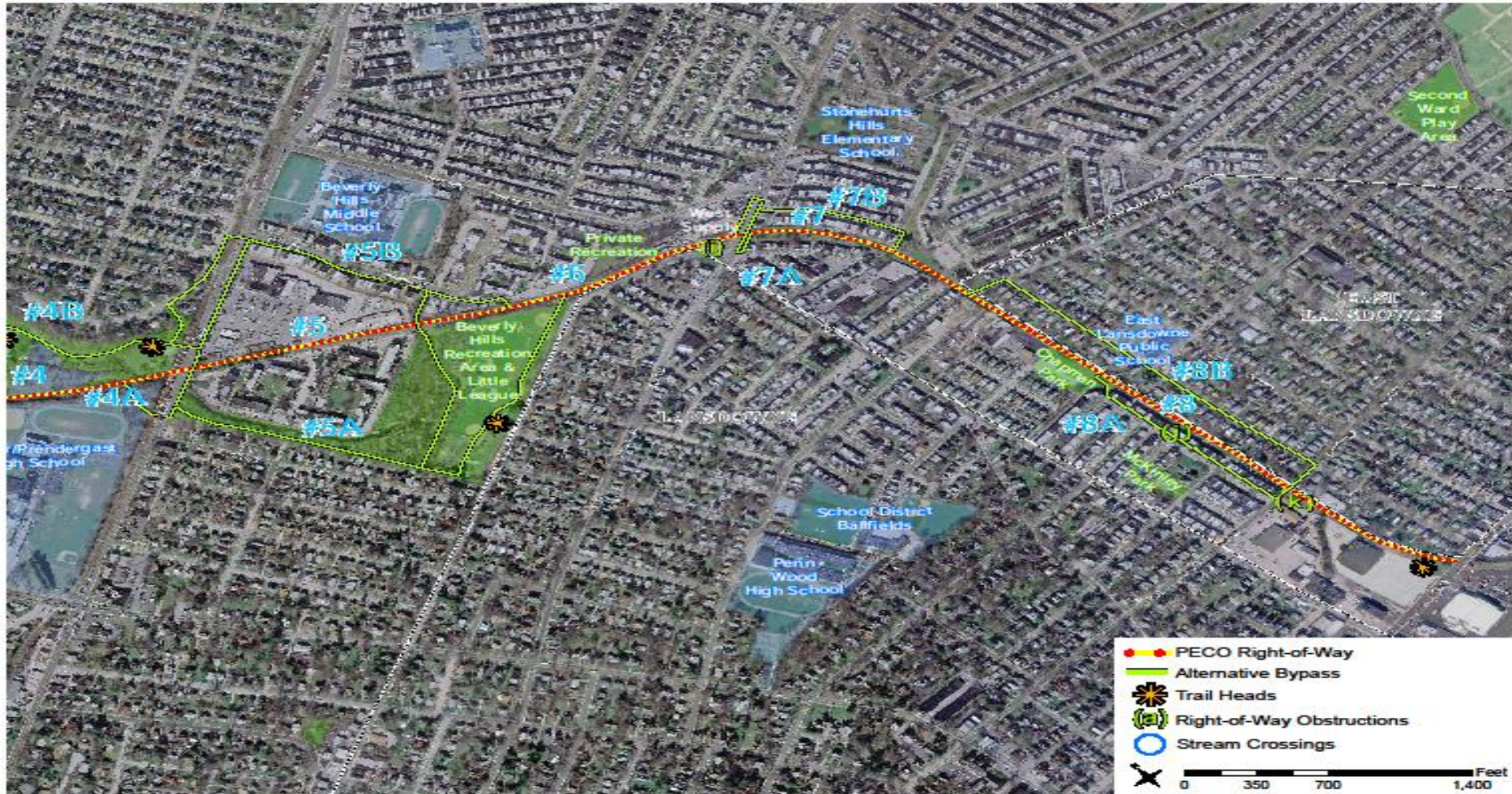
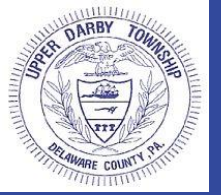
DARBY CREEK TRAIL AT GILLESPIE PARK



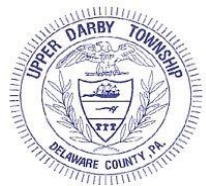
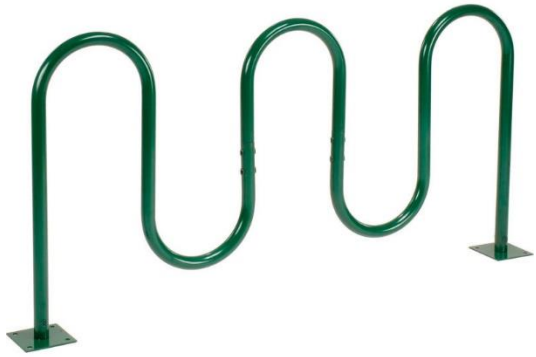
DARBY CREEK TRAIL AT DREXELINE SHOPPING CENTER



CARDINGTON TRAIL/NAYLORS RUN TRAIL



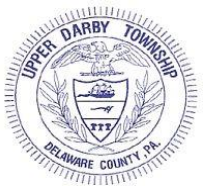
Amenities on Trails Throughout Upper Darby



UPPER DARBY PARTNERS AND FUNDERS

SPECIAL THANKS TO ALL OF OUR PARTNERS AND FUNDERS

1. DELAWARE COUNTY
2. DVRPC
3. DCED
4. UPPER DARBY TRAILS
5. DVRPC
6. PECO
7. UPPER DARBY COUNCIL
8. PENNSYLVANIA ENVIRONMENTAL COUNCIL (PEC)
9. PENNDOT





A Home Rule Community – Established 1736

**WE ARE HAPPY TO ANSWER ALL
OF YOUR QUESTIONS**

Vincent Rongione, Chief Administrative Officer
Michael Galante, Township Engineer



“The World In One Place”