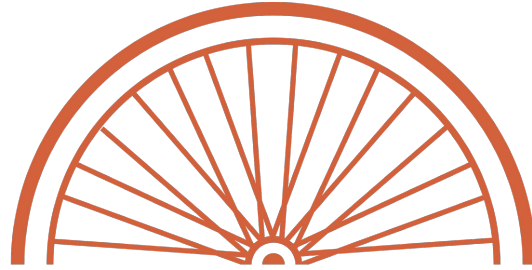


**THE
CIRCUIT
TRAILS**

**Moving The Circuit Forward to Reach
500 Miles by 2025**

Reaching 500 Miles by 2025

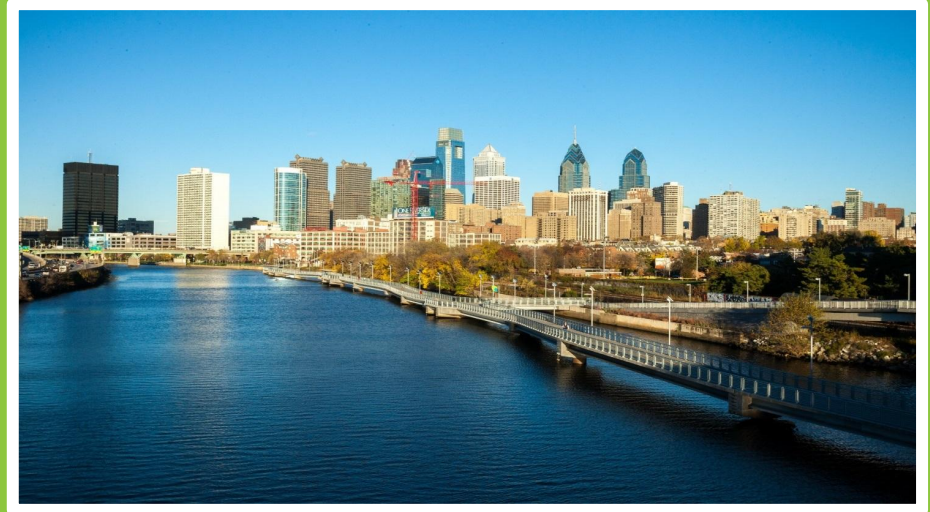


BICYCLE COALITION OF GREATER PHILADELPHIA

**Patrick Monahan
Regional Organizer**

What are the Circuit Trails?

- Multi-use trail network
- Connects people to jobs, communities, parks and waterways
- Interconnected network covering the nine-county region
- Connections to the East Coast Greenway



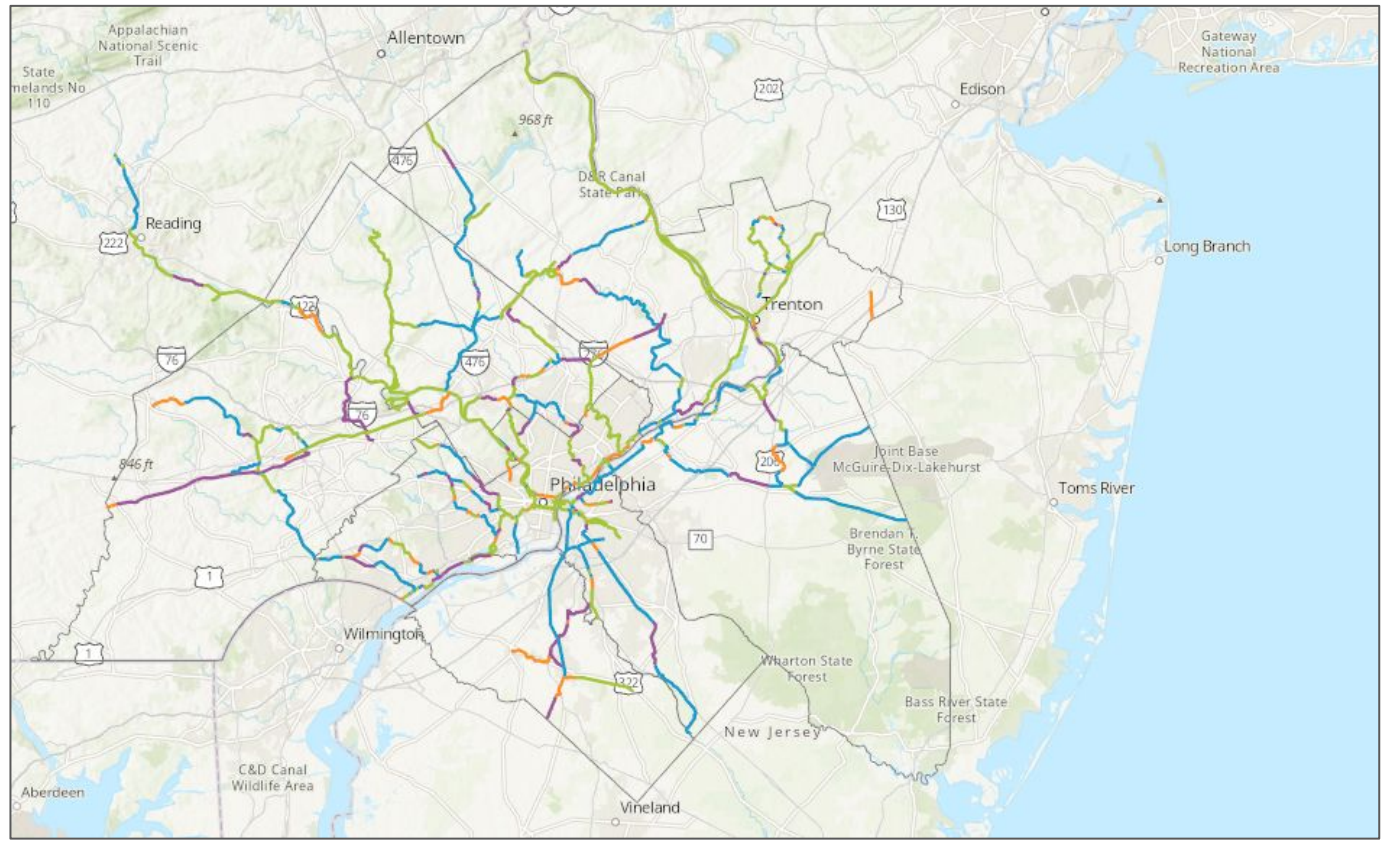
Regional Benefits



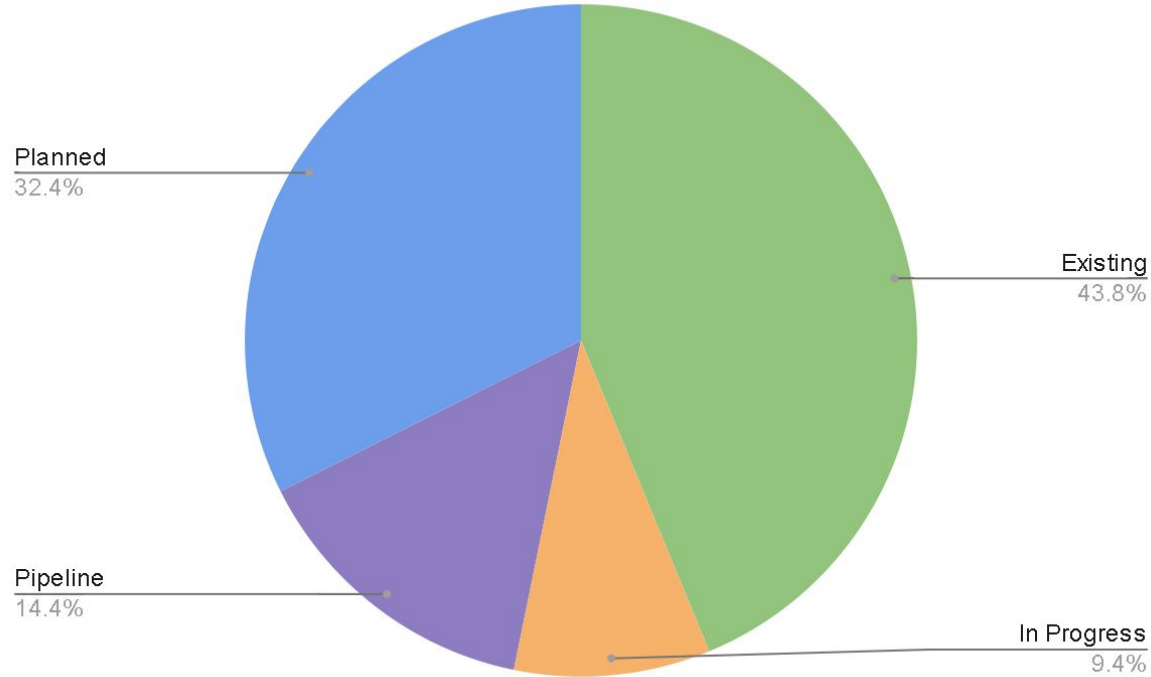
- Making our region a desirable place to live and work
- Linking communities
- Connecting residents to green space and waterways
- Providing alternative transportation options
- Contributing to economic and equitable development

The Circuit Trails

- Existing
- In Progress
- Pipeline
- Planned

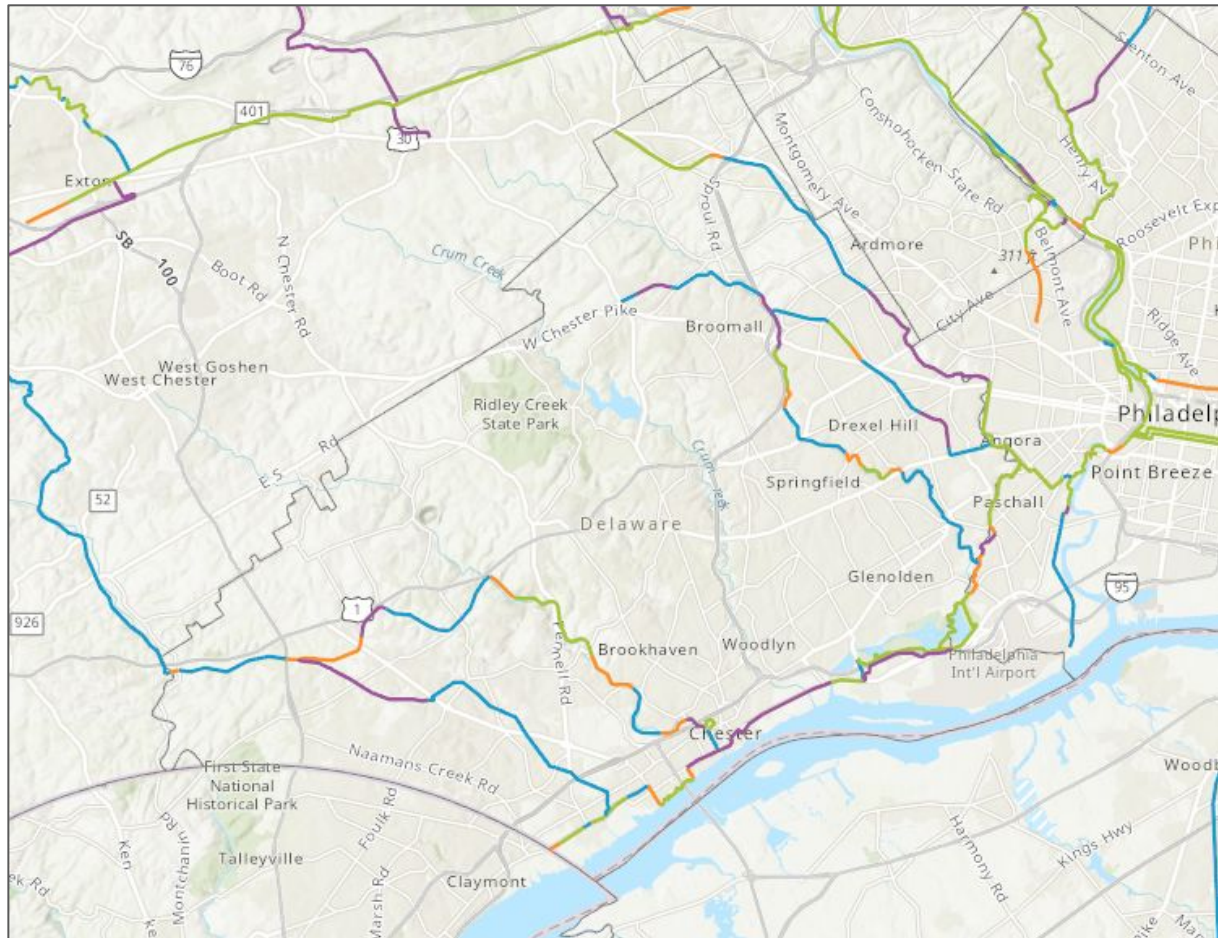


Regional Circuit Trail Status



A Closer Look

- Existing
- In Progress
- Pipeline
- Planned



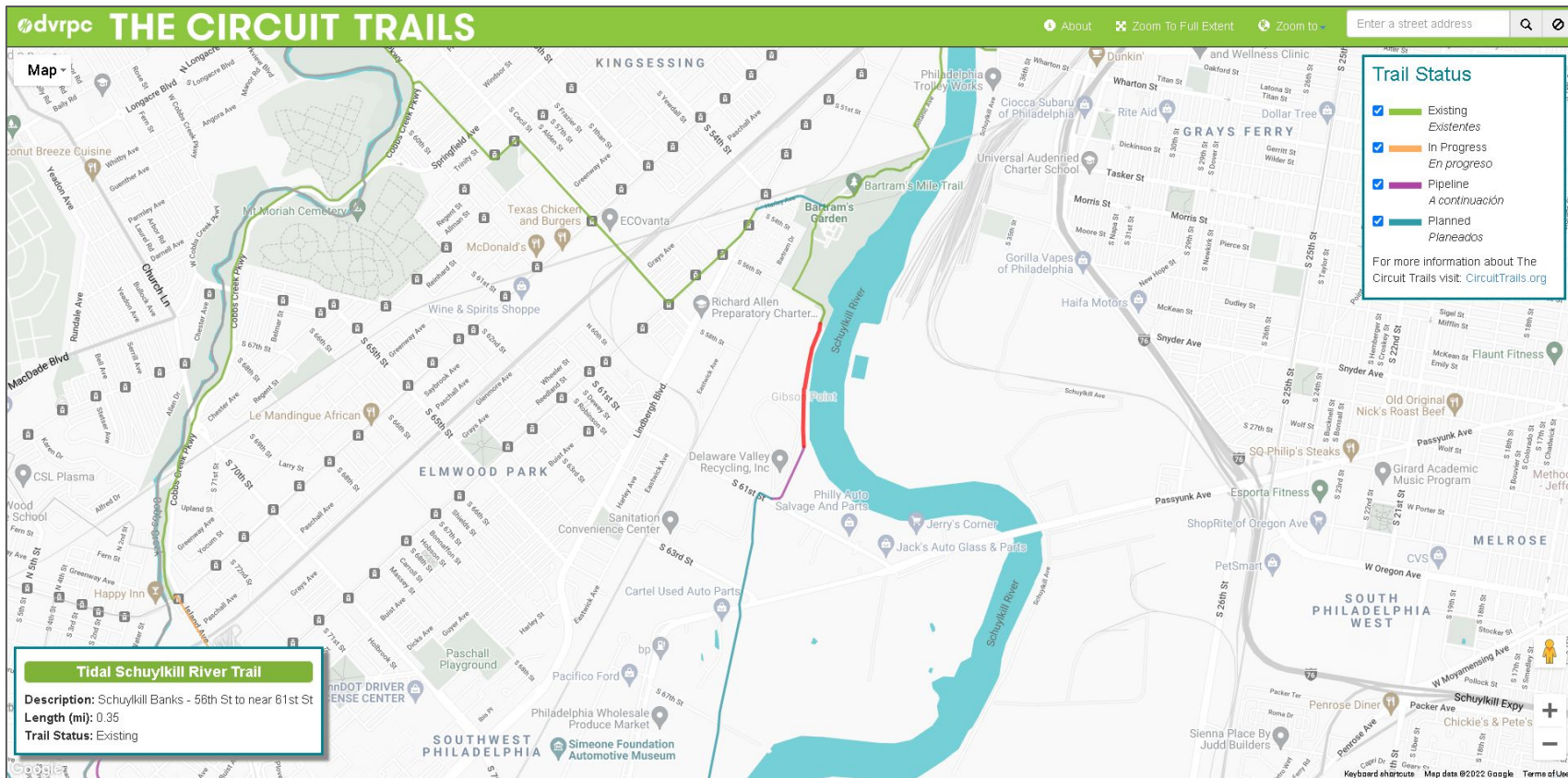
2021 Trail Openings

THE

CIRCUIT

TRAILS

Trail Openings from 2021



What's in Progress and in the Pipeline?

THE

CIRCUIT

TRAILS

What's in Progress?

SEGMENT NAME	MAIN TRAIL	STATUS	MILES
Kerlin St to Incinerator Rd	Chester Creek Trail	In Progress	0.71
Marcus Hook Bike Lanes-State Line to Braskem Plant	ECG	In Progress	0.26
Temple Road to Route 202	Octoraro Trail	In Progress	1.12
Baltimore Ave to Kent Park	Darby Creek Trail	In Progress	0.27
Bridgewater Rd to Creek Rd	Chester Creek Trail	In Progress	0.71
Concord Road to Temple Road	Octoraro Trail	In Progress	0.72
		Total Miles:	3.8

What's in the Pipeline?

SEGMENT NAME	MAIN TRAIL	STATUS	MILES
291/Industrial Highway Trail	ECG	Pipeline	2.34
Chester City 2nd St/Rt. 291 - Norris St to Ridley Creek	ECG	Pipeline	1.88
Chester City Highland Ave - 2nd St to Waterfront	ECG	Pipeline	0.36
Preston Place to Kerlin St	Chester Creek Trail	Pipeline	0.74
City Line Ave to Eagle/Wynnewood Rd	Forge to Refuge	Pipeline	1.82
I-95 Wormhole	JHNWR-Worm Hole-Tinicum	Pipeline	0.18
Chester City Norris St - Waterfront to 2nd Ave	ECG	Pipeline	0.29
Clayton Park to Route 202	Garnet Valley Greenway	Pipeline	3.19
JHNWR to Airport Business Park	JHNWR-Worm Hole-Tinicum	Pipeline	0.57
Pilgrim Park to Merry Place	Darby Creek Trail	Pipeline	0.79
West Chester Pike Underpass	Darby Creek Trail	Pipeline	0.24
Jansen Avenue to Manor Park	East Coast Greenway	Pipeline	0.72
West Chester Pike Underpass to Darby Creek	Darby Creek Trail	Pipeline	0.50
Lenni Rd to Wawa Station	Chester Creek Trail	Pipeline	0.72
Polecat Road to Concord Road	Octoraro Trail	Pipeline	1.12
I-476 Underpass to Radnor Tr	Forge to Refuge	Pipeline	0.34
Darby Creek to Haverford Reserve	Darby Creek Trail	Pipeline	0.68
Route 202 to Heyburn Road (Phase 1)	Octoraro Trail	Pipeline	1.23
4th Avenue to Jansen Avenue	East Coast Greenway	Pipeline	0.53
Sproul Rd to I-476	Forge to Refuge	Pipeline	0.30
Airport Business Park to 4th Avenue	East Coast Greenway	Pipeline	0.52
Ring Rd to Creek Rd (Phase 2)	Octoraro Trail	Pipeline	0.72
High Trail and Bridge	Octoraro Trail	Pipeline	0.24
Total Miles:			20.02



HOW YOU CAN HELP

**Ask Local
Officials to
Prioritize the
Circuit Trails**

**Be active as a
Circuit Citizen
and Action
Team member**

**Join the Bike
Delco Action
Team**



Save the Date!

Live Circuit Action Team Update

February 22nd at 12pm



THE
CIRCUIT
TRAILS



Upcoming Action Team Event:

- **Live progress update from the Action Team and what's next**
- **When: 2/22/2022 from 12 to 12:30pm**
- **Where: The Circuit Trails Facebook Page**

Check Out The Latest in Delaware County:

- circuittrails.org/delaware

Stay in the know!

circuittrails.org/get-involved

We can do this!

**THE
CIRCUIT
TRAILS**

Contact Info:
patrick@bicyclecoalition.org

**Moving The Circuit Forward to Reach
500 Miles by 2025**