



# Concord Township *Trail Planning*





**the Circuit**

Greater Philadelphia's  
Regional Trail Network

- Existing Trails
- Trails in Progress
- Planned Trails



**Concord  
Township**



▼

## Trail Status

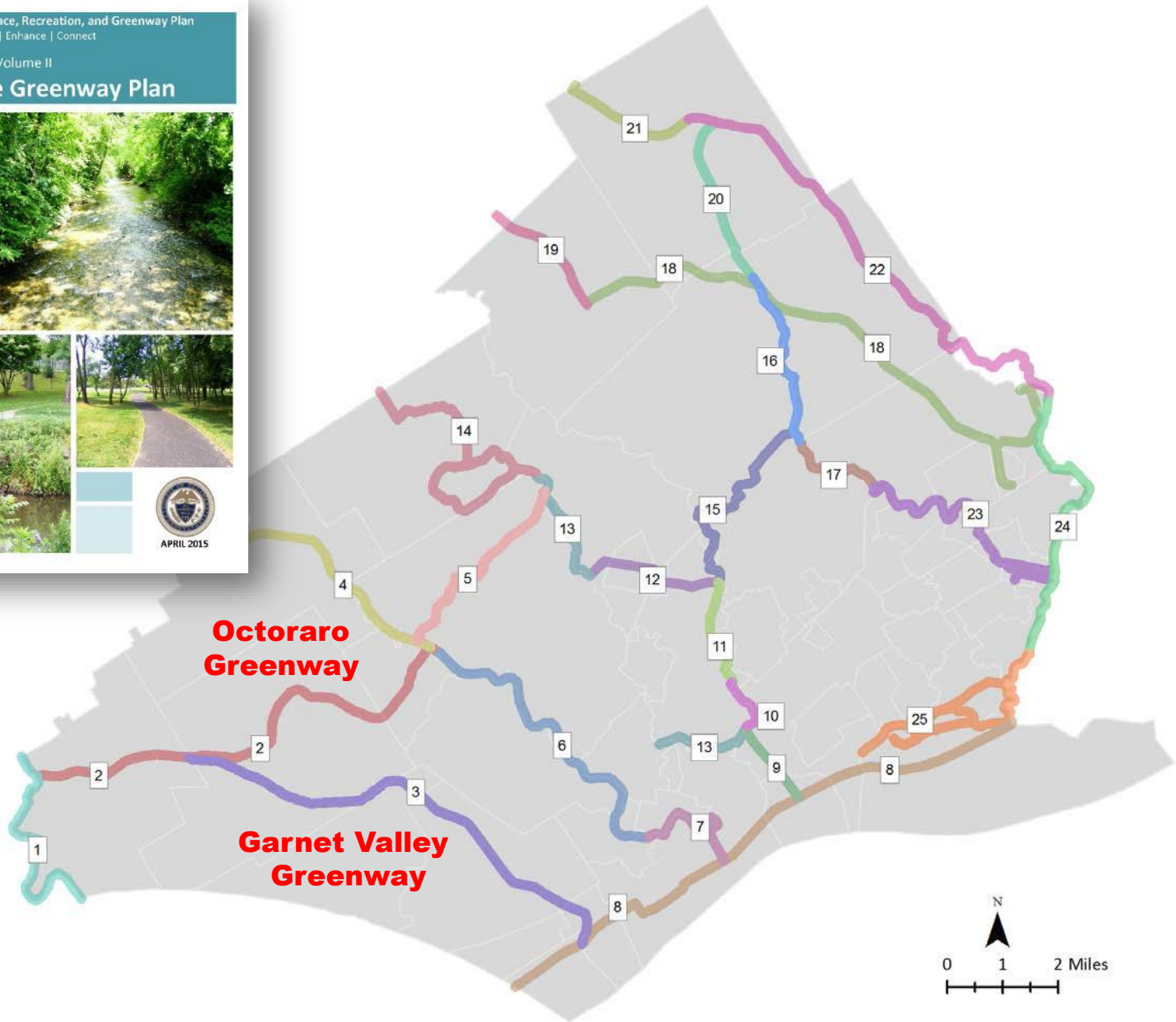
- ☒ Existing
- ☒ In Progress
- ☒ Pipeline
- ☒ Planned

## Concord Township

## Octoraro Greenway

## Garnet Valley Greenway

## Countywide Greenway Plan



Fall 2015



# Greenways and Open Space Plan 2015

## CONCORD TOWNSHIP GREENWAYS AND OPEN SPACE NETWORK PLAN



Pennoni



## Octoraro Greenway Feasibility Study 2016



## OCTORARO GREENWAY FEASIBILITY STUDY

CONCORD TOWNSHIP  
CHESTER HEIGHTS BOROUGH  
DELAWARE COUNTY, PA

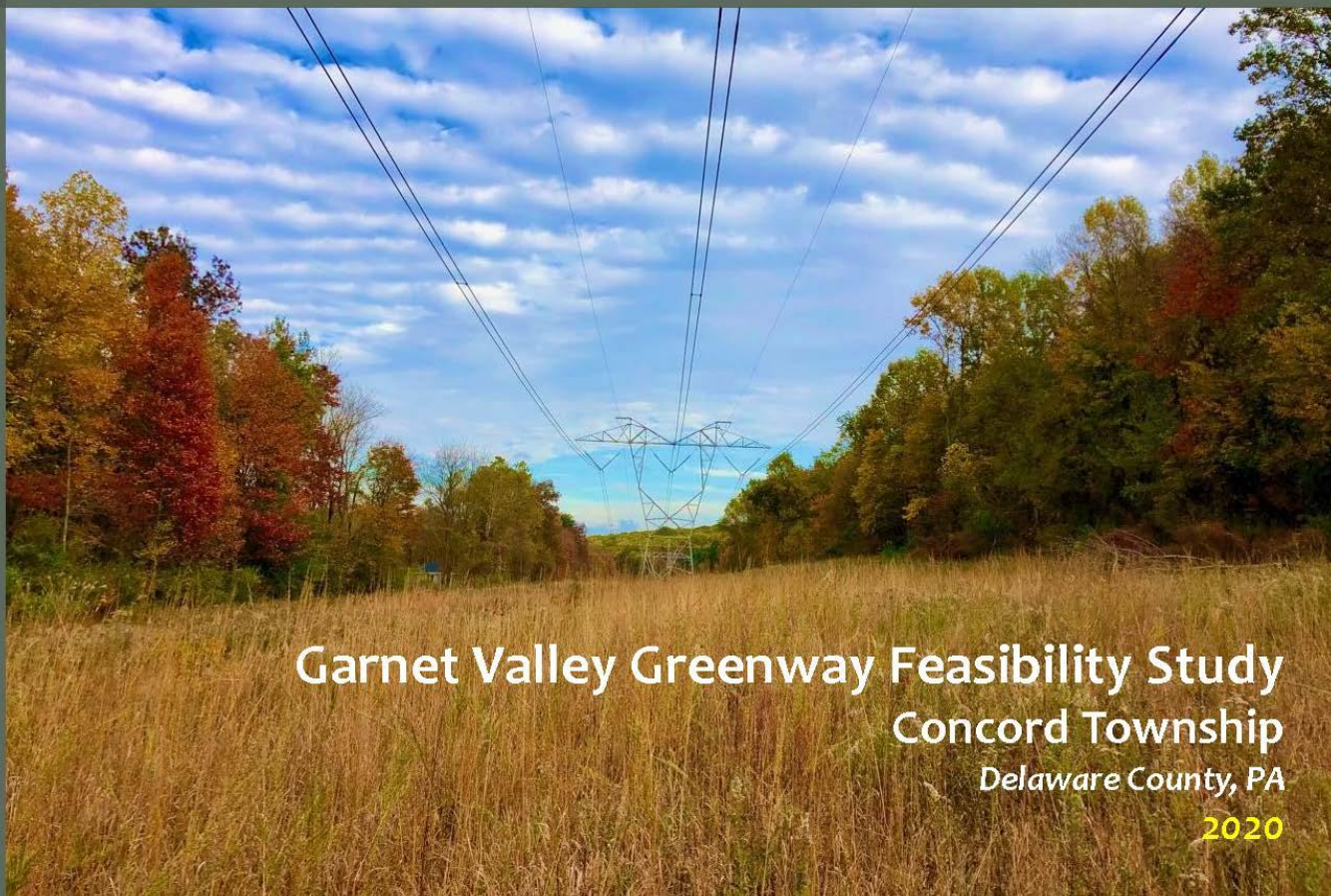
*DRAFT - OCTOBER 2016*

Pennoni

BOROUGH OF  
CHESTER HEIGHTS

Township of Concord  
DELAWARE COUNTY

# Garnet Valley Greenway Feasibility Study 2020



## Garnet Valley Greenway Feasibility Study Concord Township Delaware County, PA 2020



**Township of Concord**  
DELAWARE COUNTY


# CONCORD TOWNSHIP GREENWAYS AND OPEN SPACE NETWORK PLAN

## Trail Types


Octoraro Trail 

PECO Trail 


Utility Corridor 

Off-Street Trails  
(paved) 

Off-Street Trails  
(unpaved) 

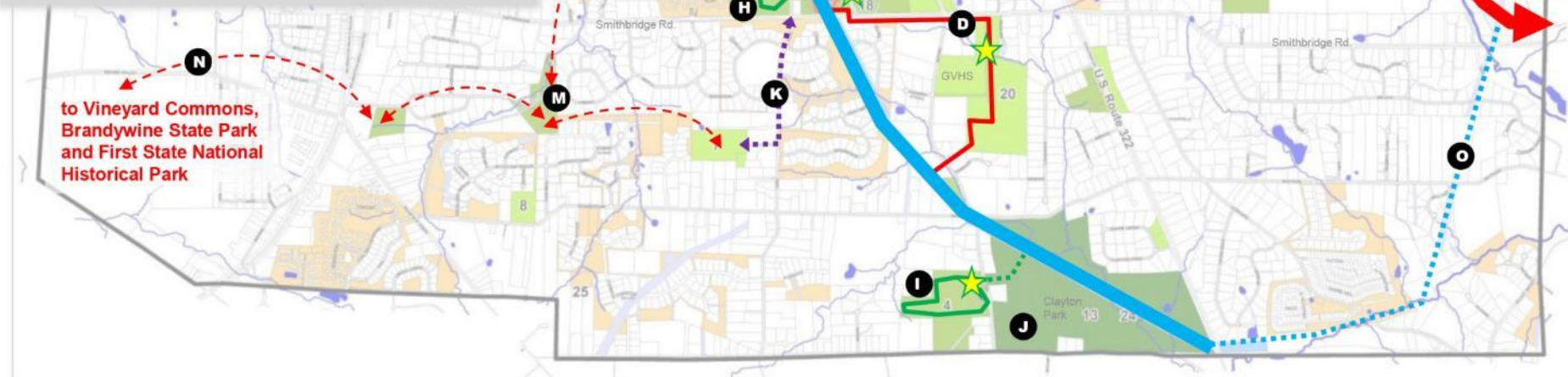
On-Street Trails 

Other Potential  
Connections 

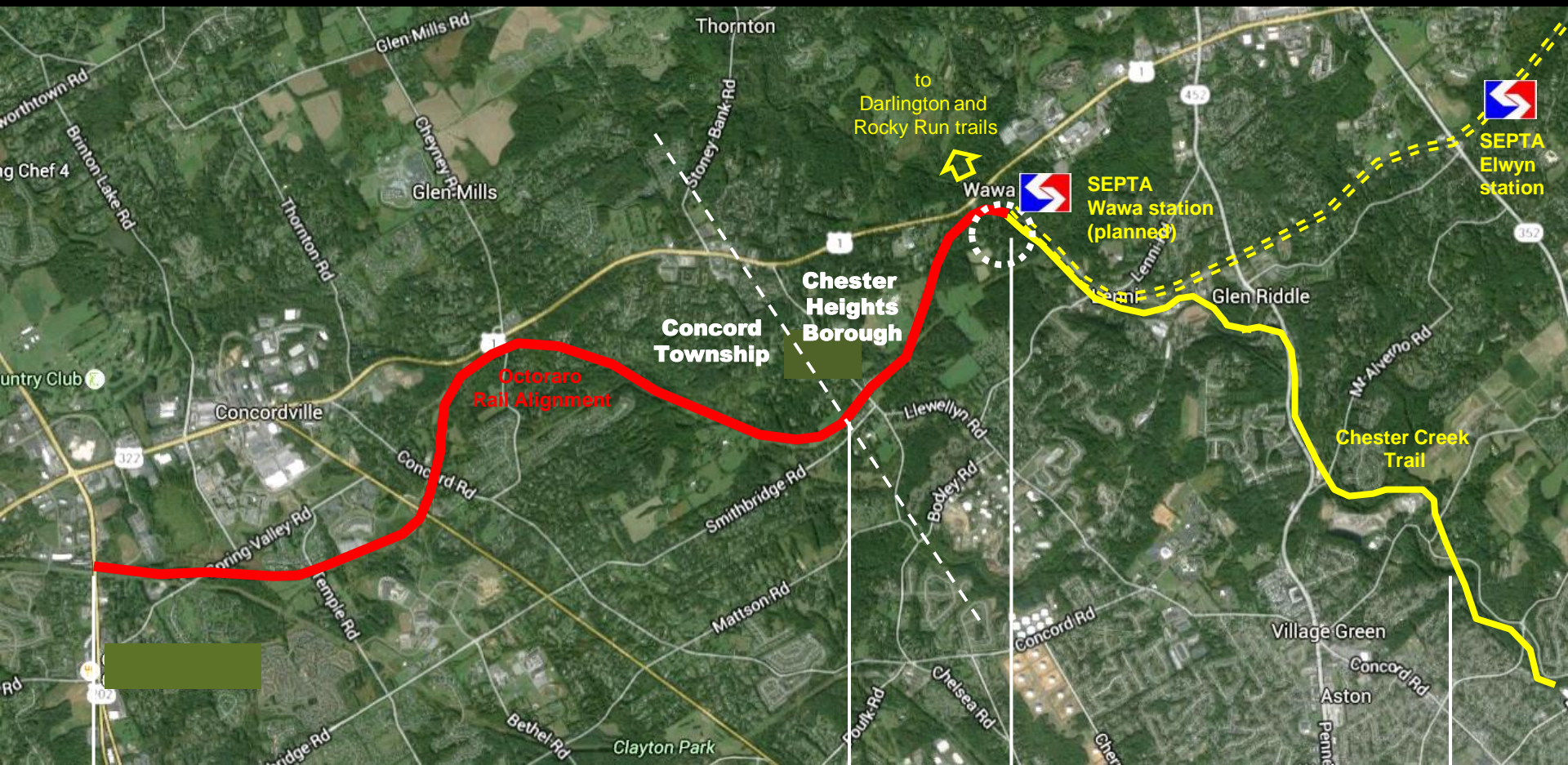
Potential Trail Heads 

## Trail Segments

- A. Octorara Trail
- B. PECO Trail – East
- C. PECO Trail – West
- D. Smithbridge Trail
- E. Brinton Lake Trail
- F. Spring Valley Trail
- G. 43 Thornton Trail
- H. Collman Trail
- I. 30 Bethel Trails
- J. Clayton Park Trails
- K. BYC Connection
- L. Cheyney Connection
- M. Webb Creek Trails
- N. First State Connection
- O. PECO Trail Extension
- P. West Bank Nature Trail



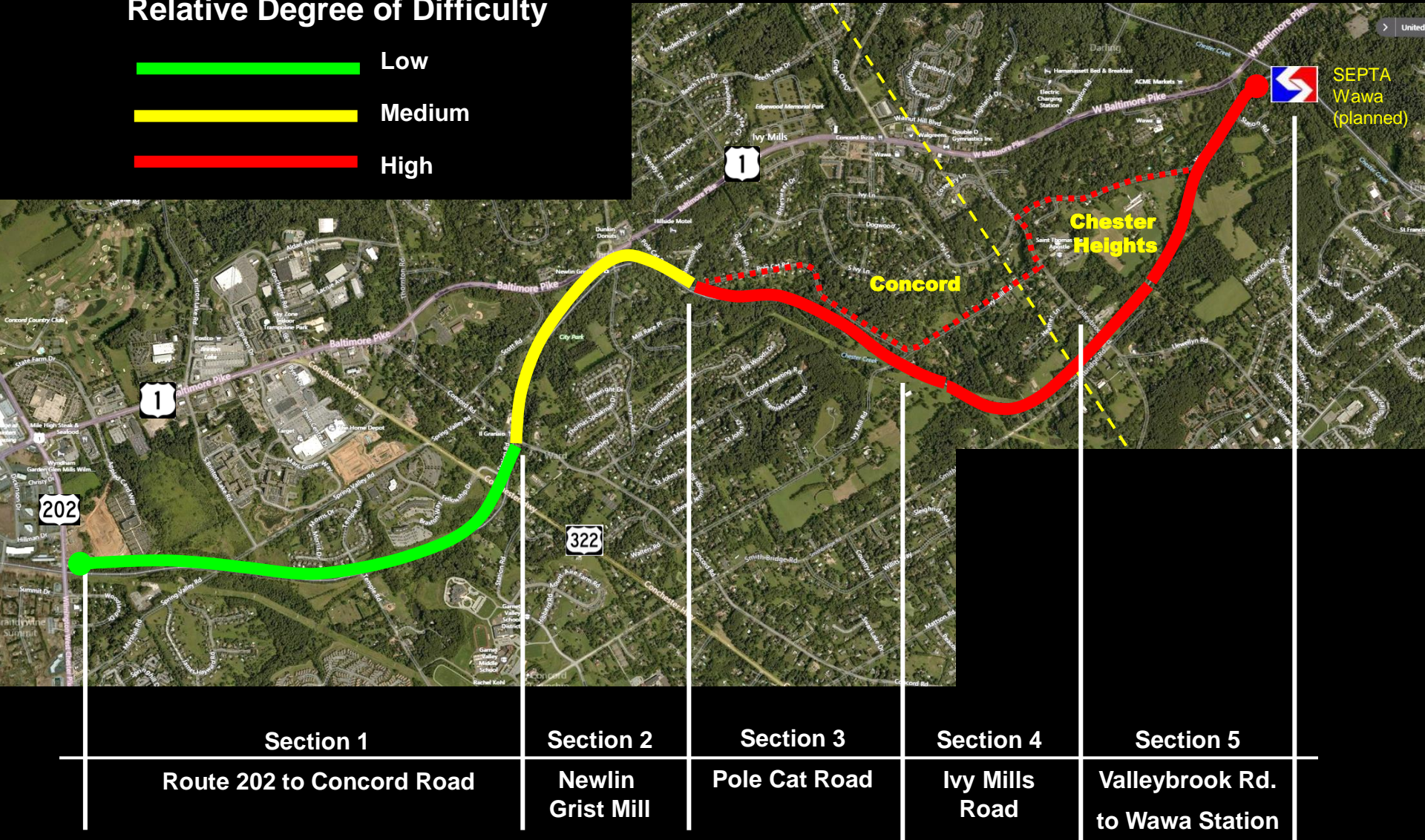
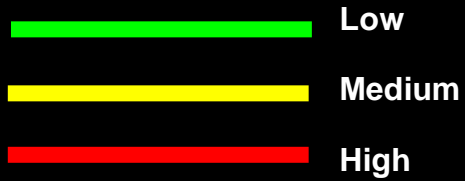
# Octoraro Rail Alignment



Octoraro Rail Alignment	Octoraro	Chester Creek Trail	CCT
Concord Township	Chester Heights Borough	Middletown Township	Aston Twp.

# Octoraro Greenway

## Relative Degree of Difficulty



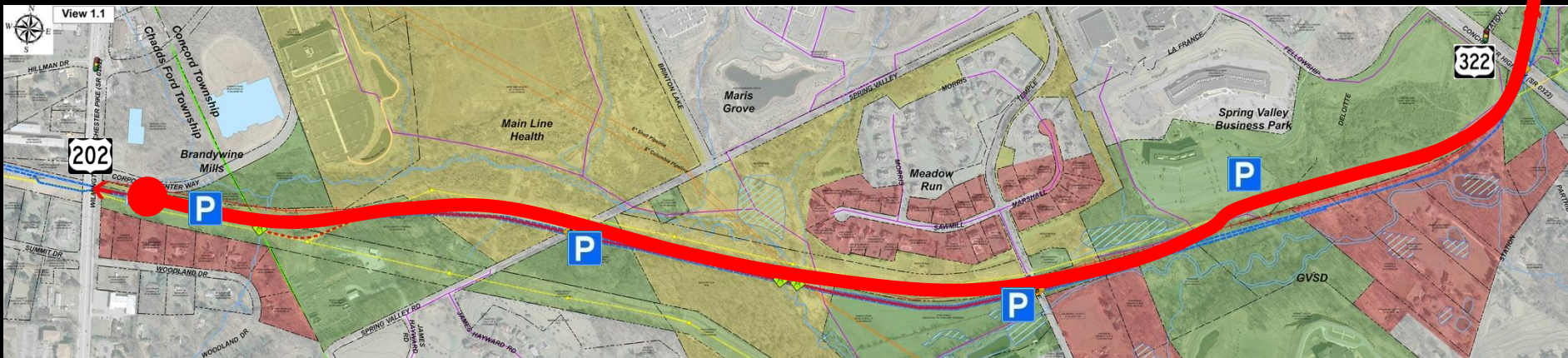


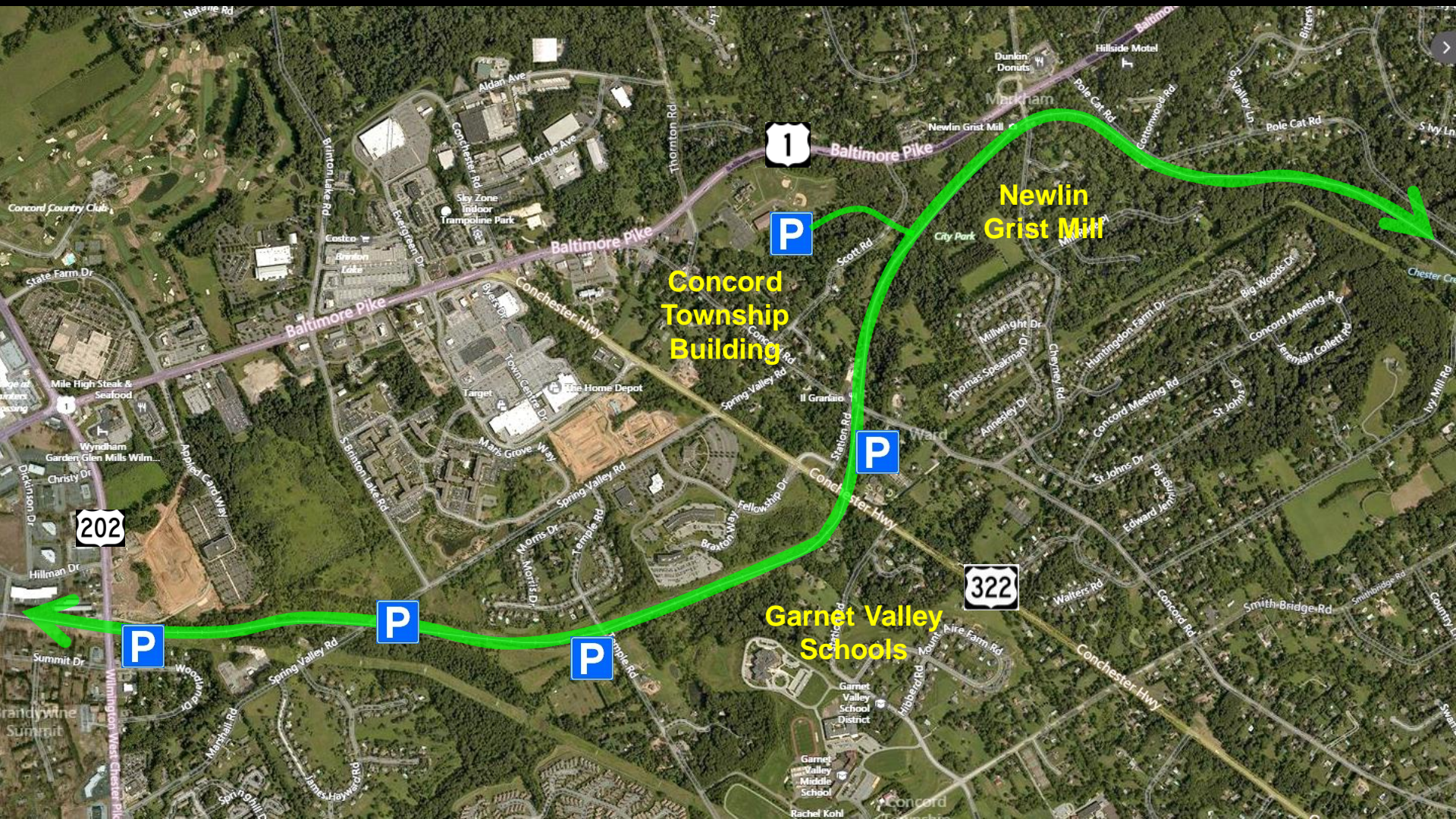
**Now**



**Some day?**

# Section 1: Rt 202 to Rt. 322





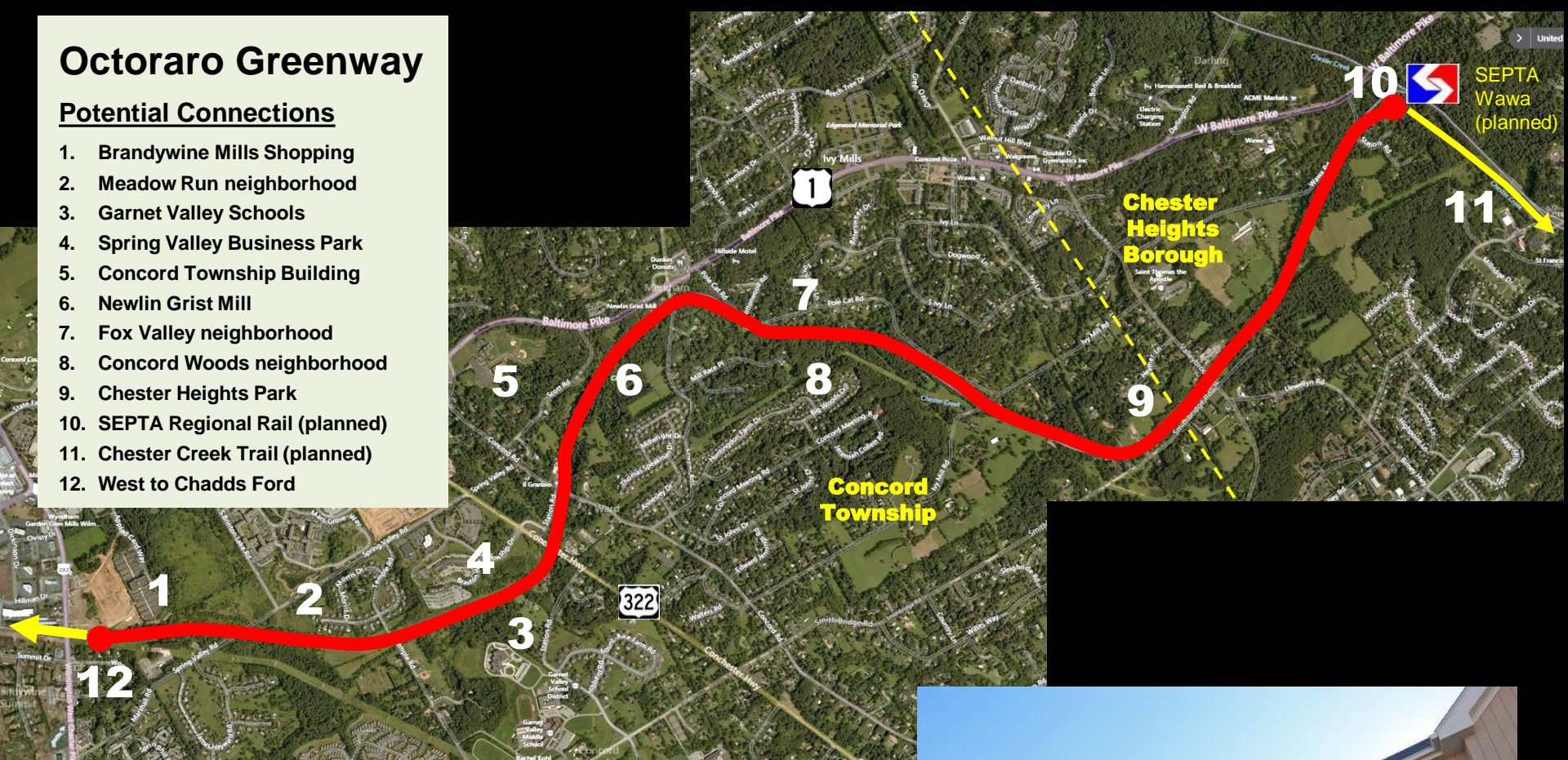
OCTORARO GREENWAY

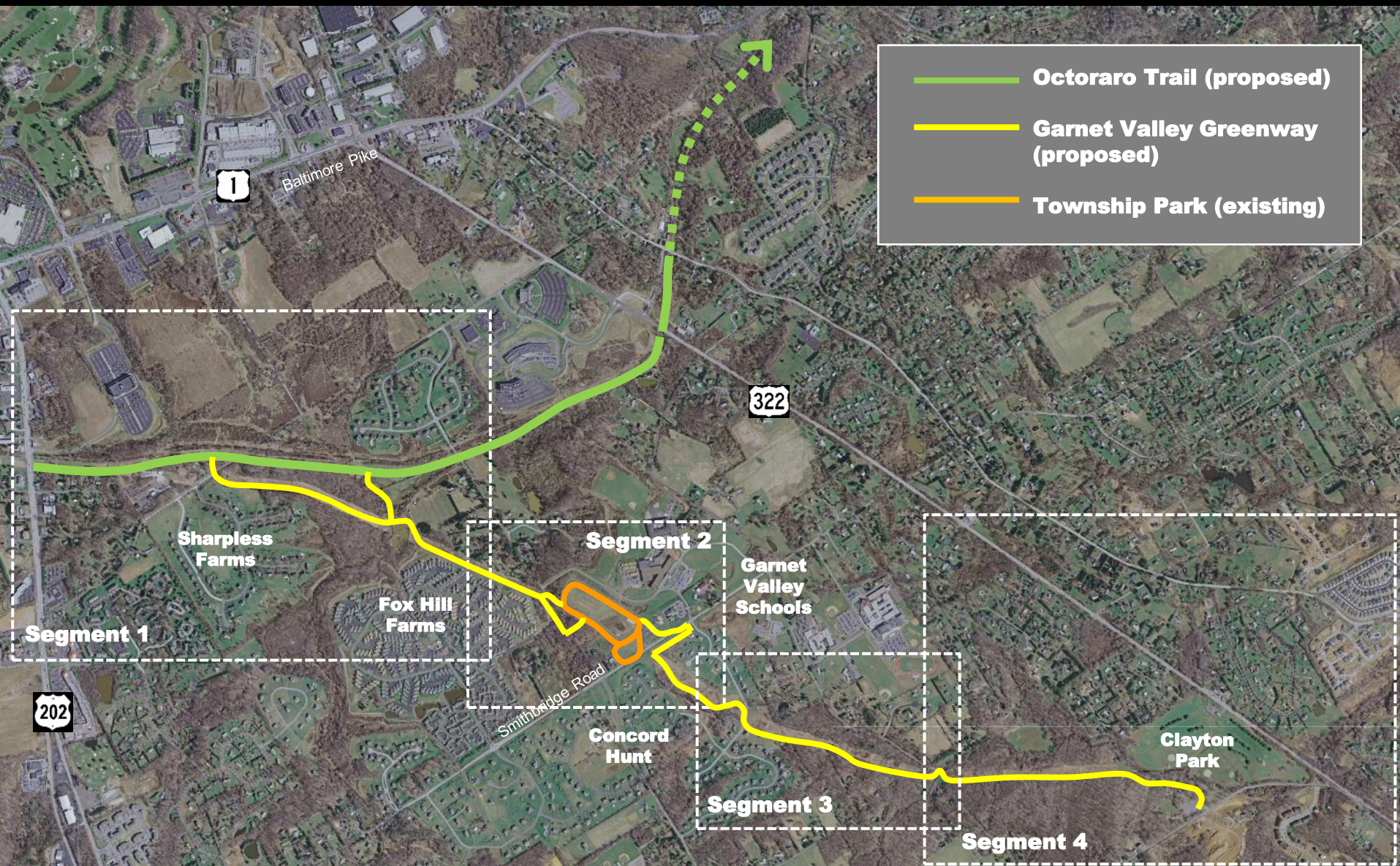
 Trail Head Access and Parking

# Octoraro Greenway

## Potential Connections

1. Brandywine Mills Shopping
2. Meadow Run neighborhood
3. Garnet Valley Schools
4. Spring Valley Business Park
5. Concord Township Building
6. Newlin Grist Mill
7. Fox Valley neighborhood
8. Concord Woods neighborhood
9. Chester Heights Park
10. SEPTA Regional Rail (planned)
11. Chester Creek Trail (planned)
12. West to Chadds Ford

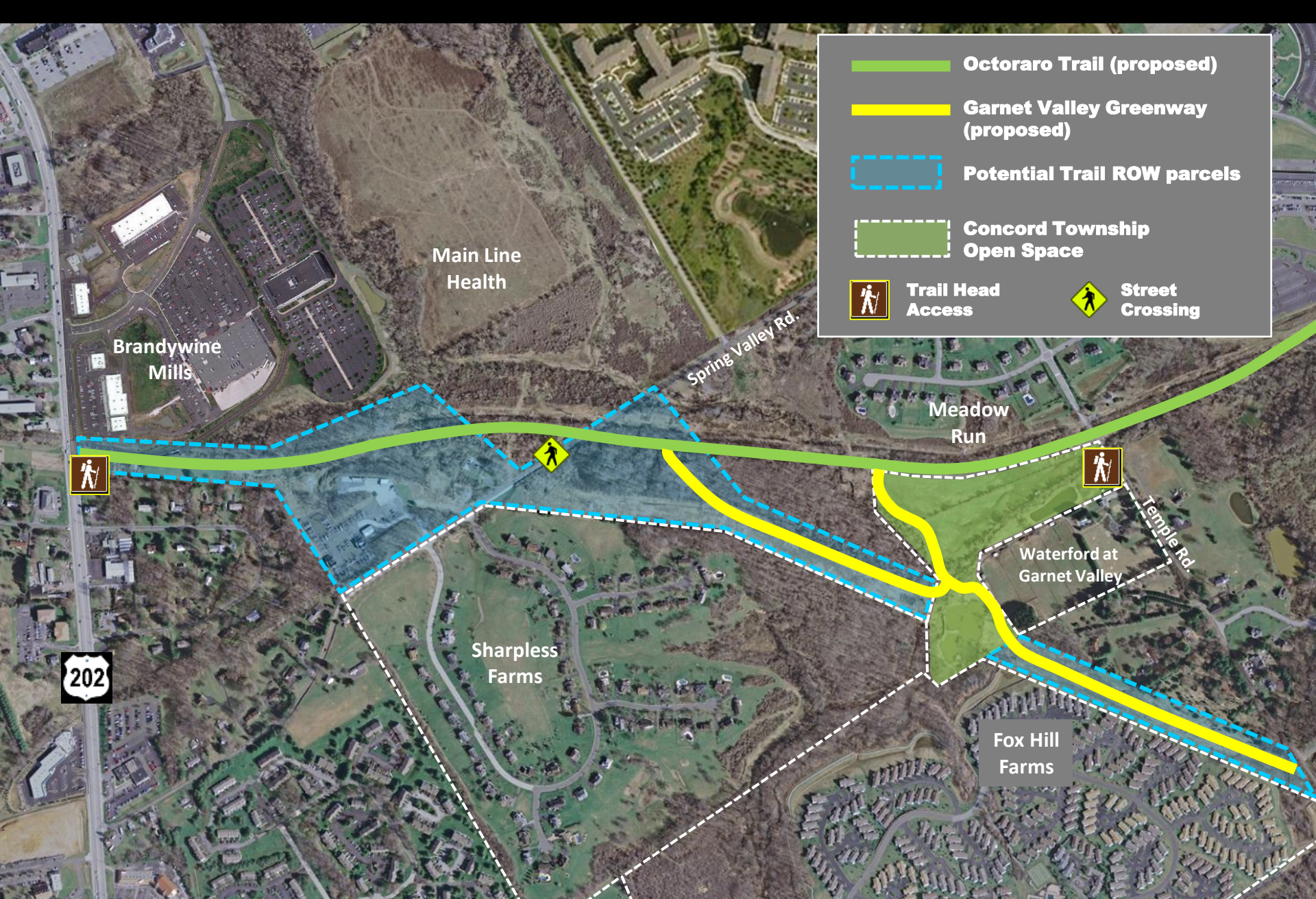




## Garnet Valley Greenway – Proposed Alignment



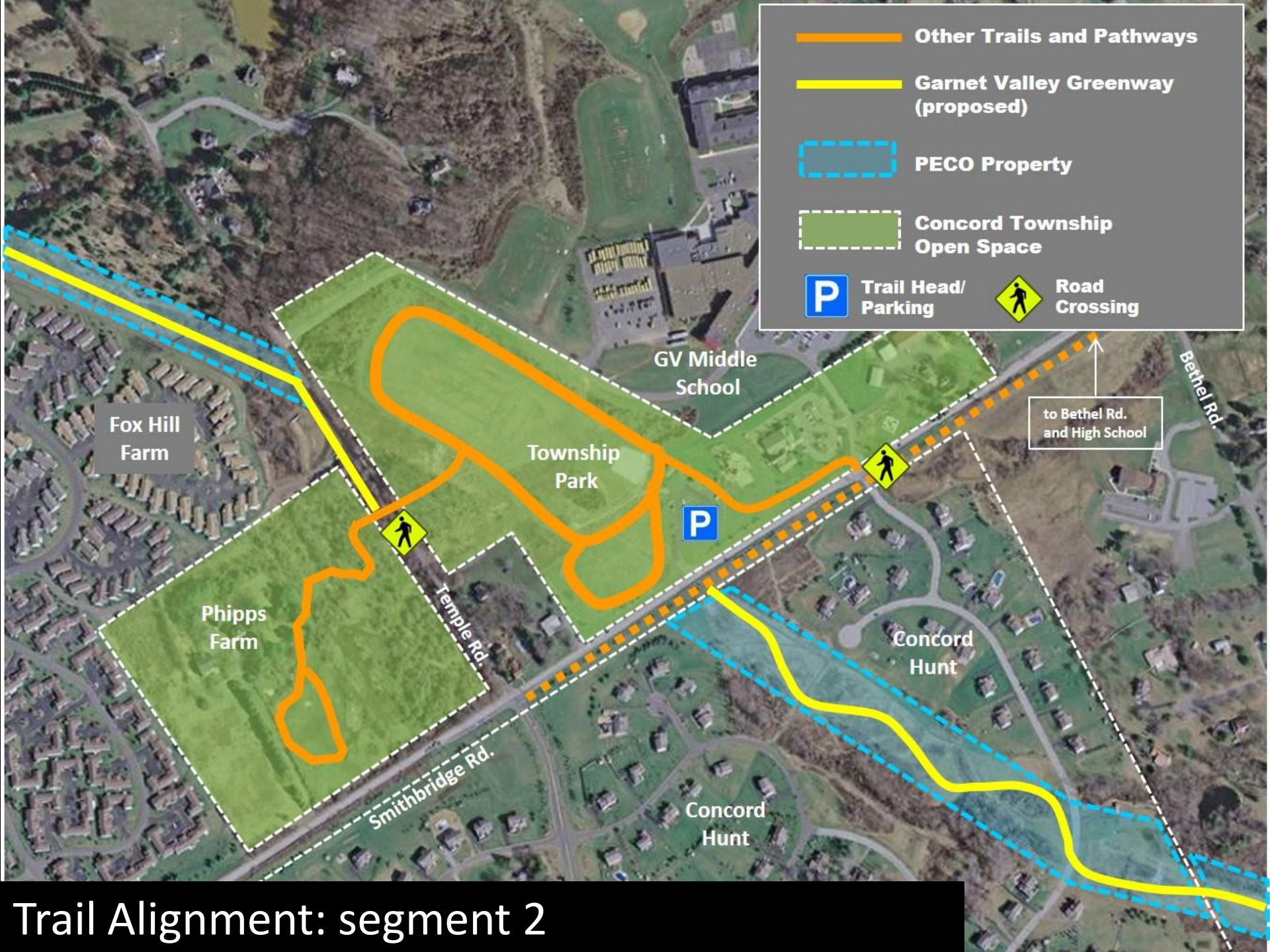
## Community Connections



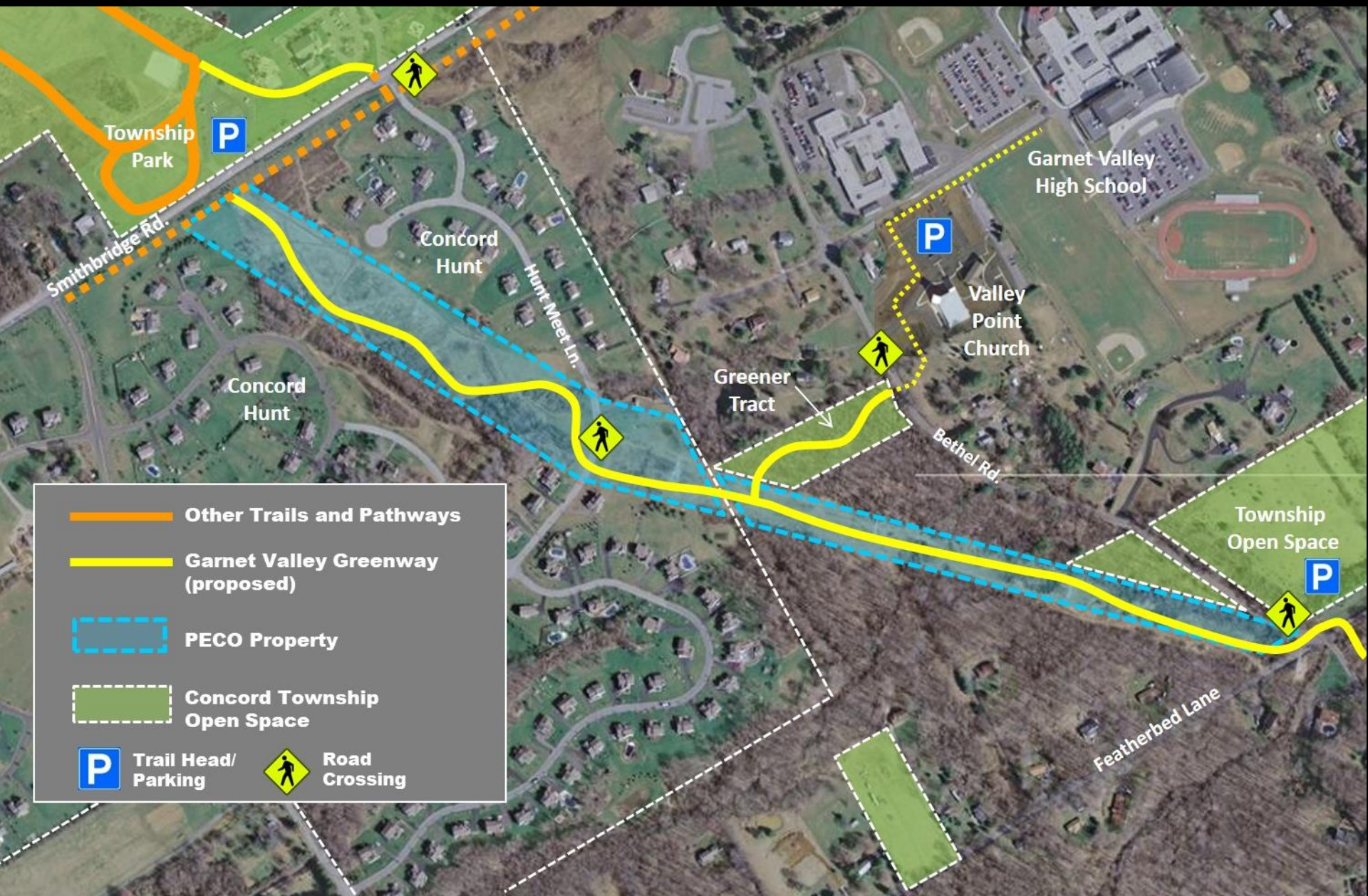
Trail Alignment: segment 1

# Trail behind Fox Hill Farms

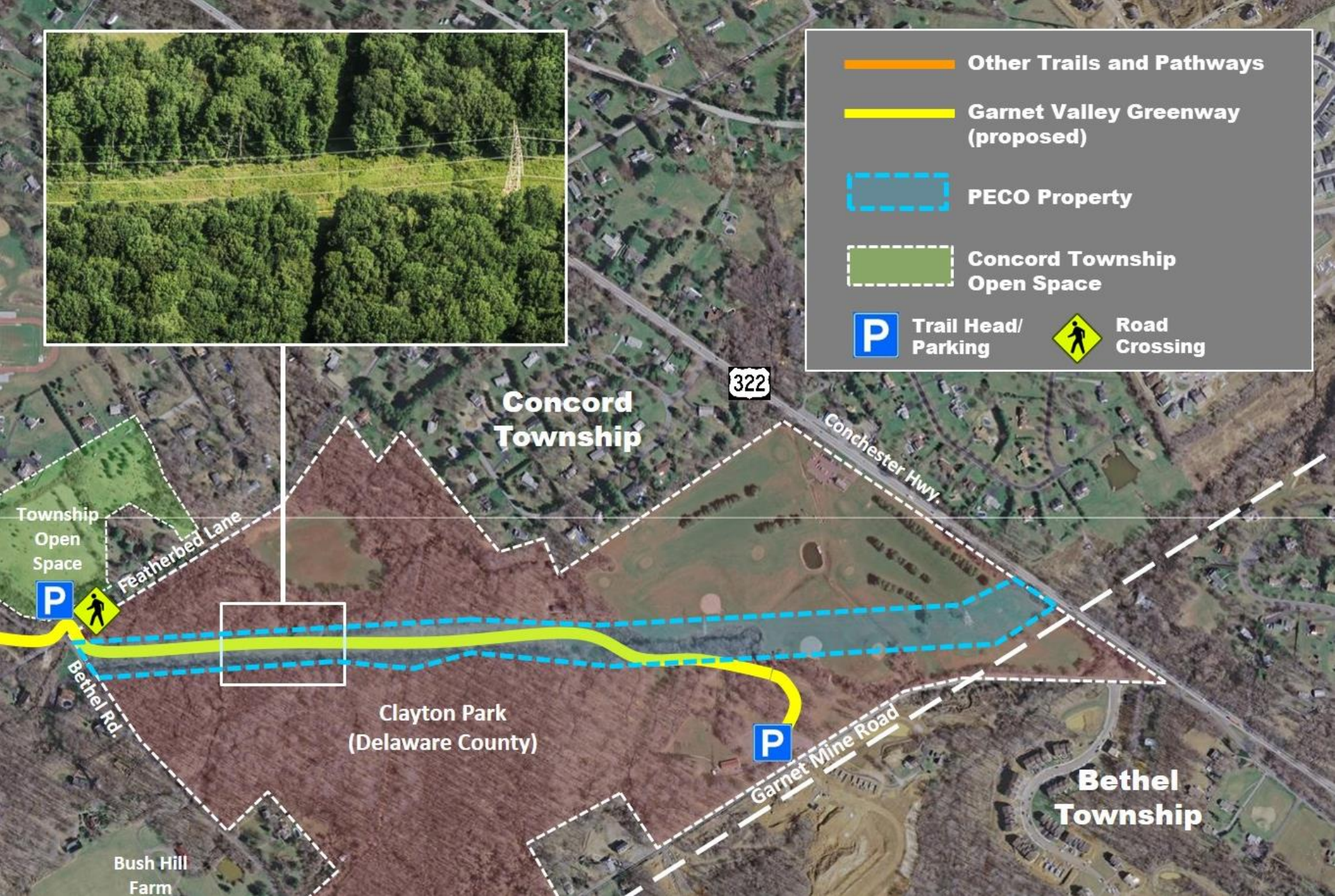




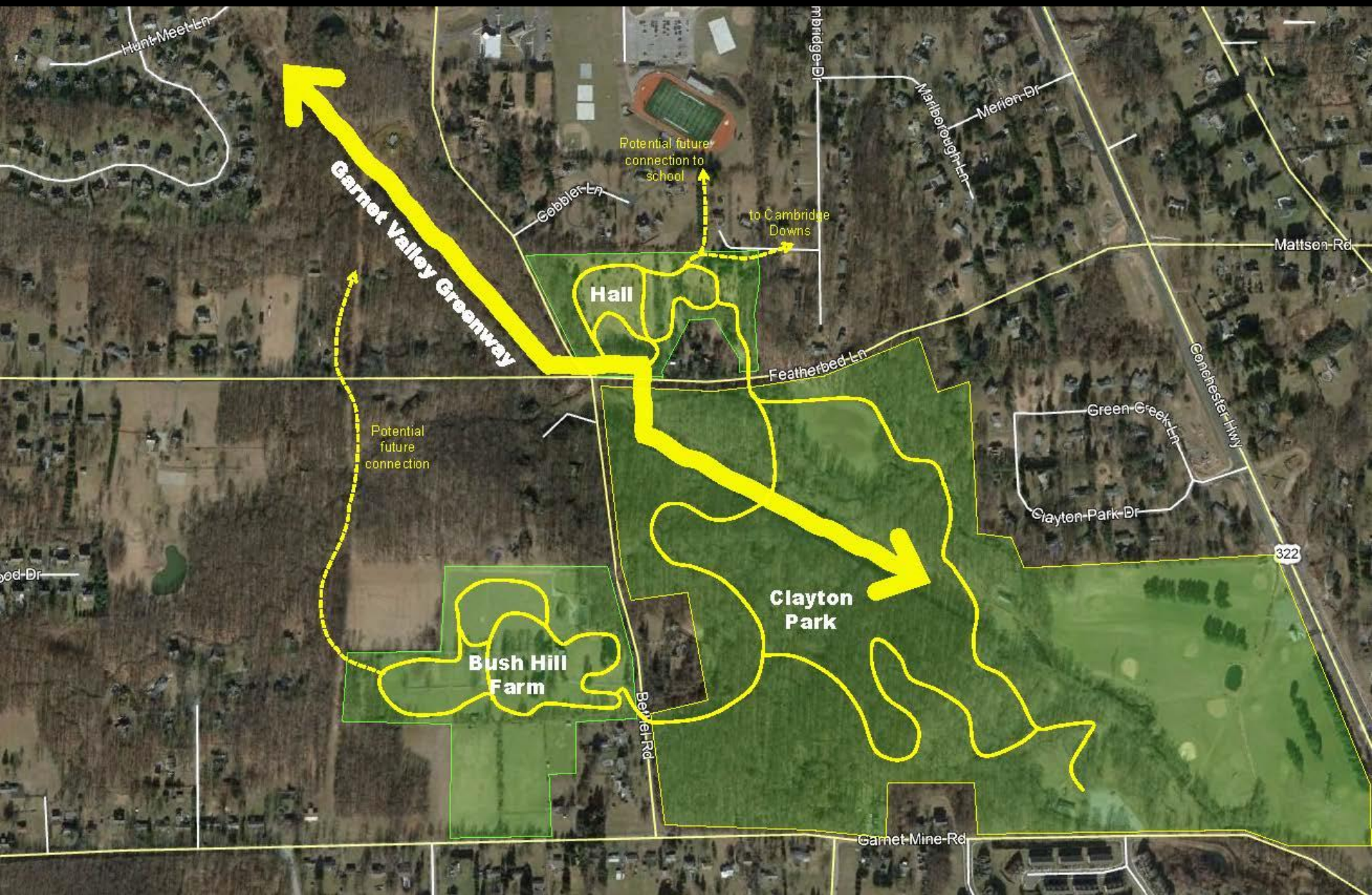
Trail Alignment: segment 2



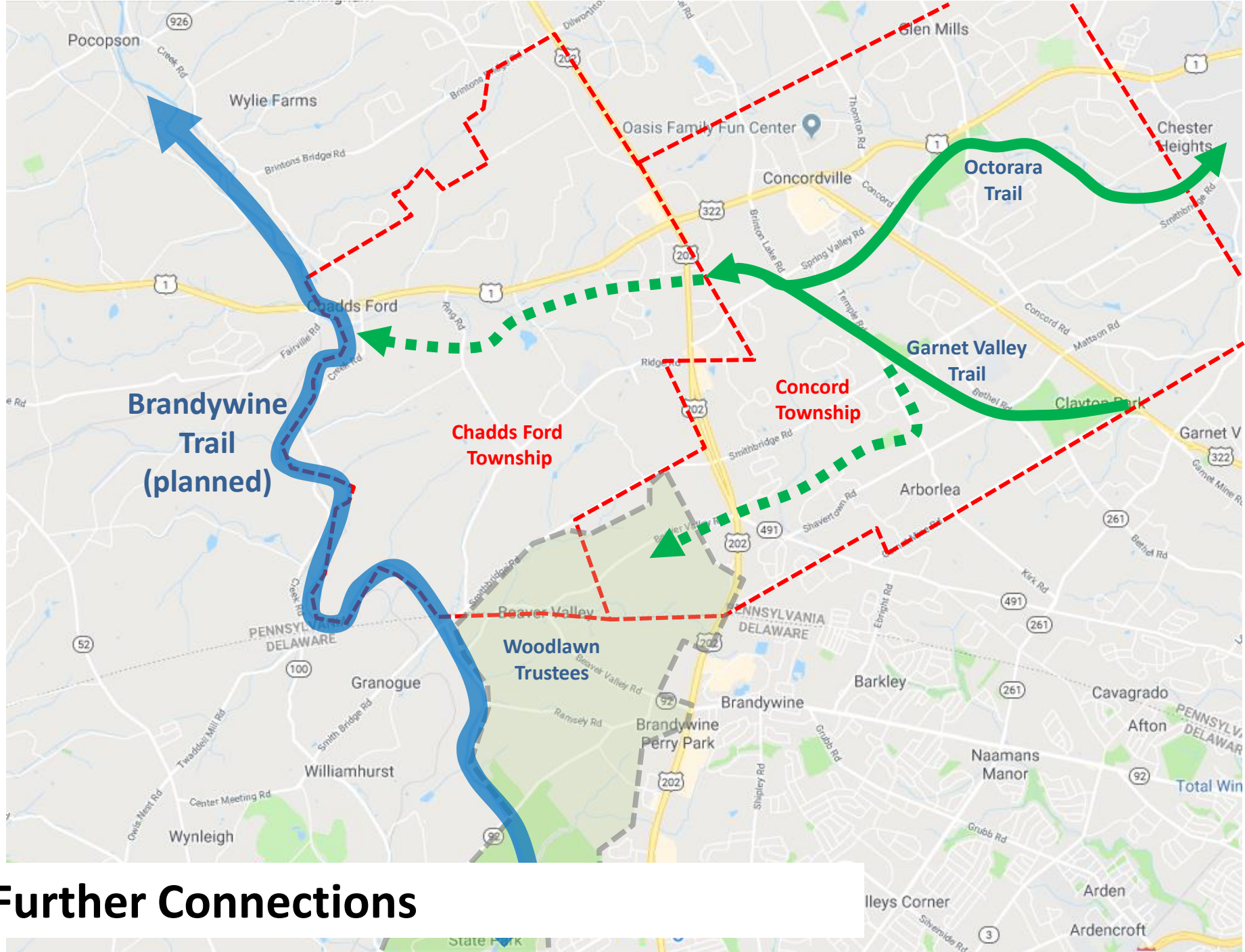
Trail Alignment: segment 3



Trail Alignment: segment 4



Trail Alignment: Smithbridge to Featherbed





# Concord Township *Trail Planning*

