



Marple Township Township Trails Master Plan 2020

Prepared by:
Pennoni

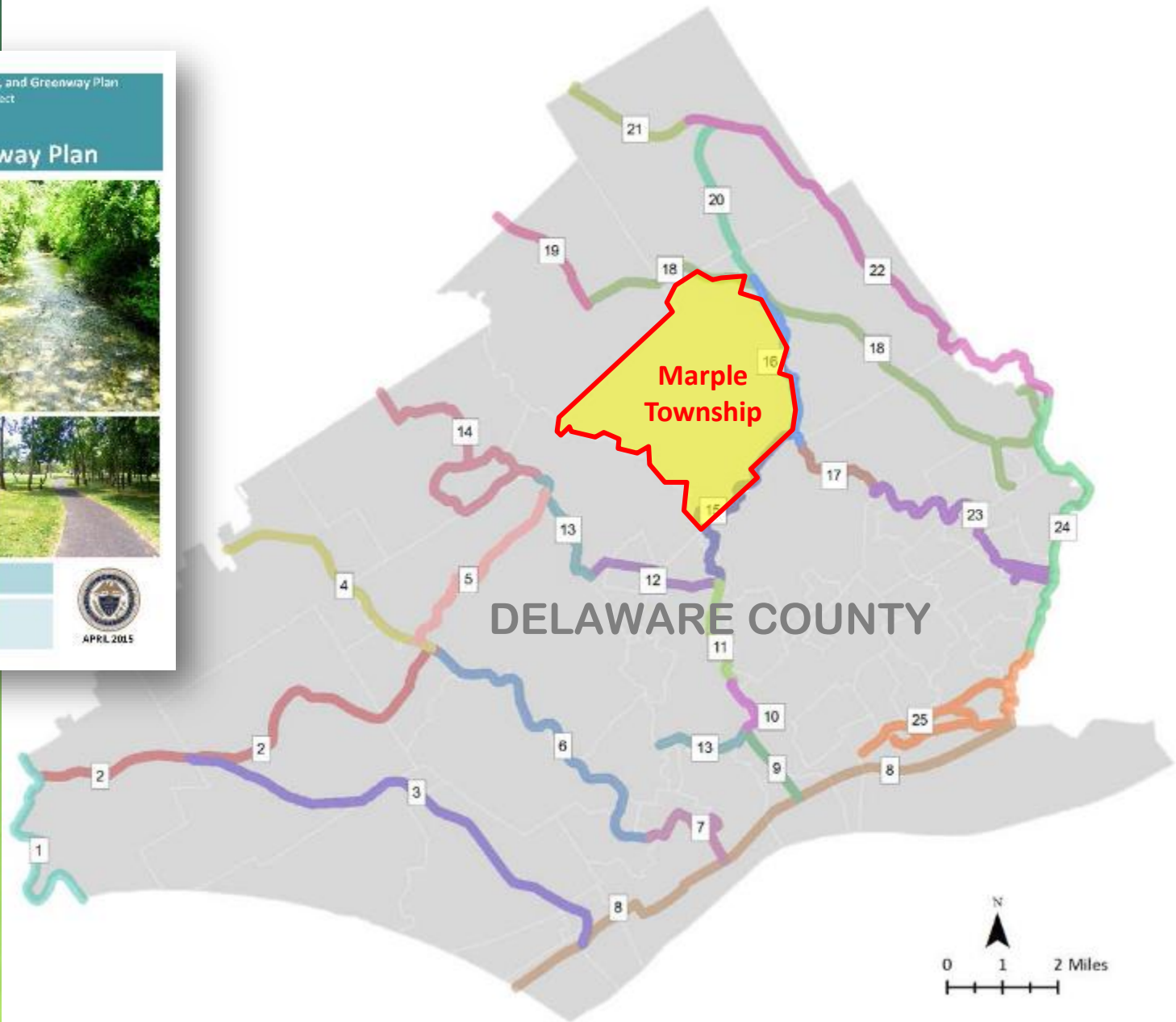
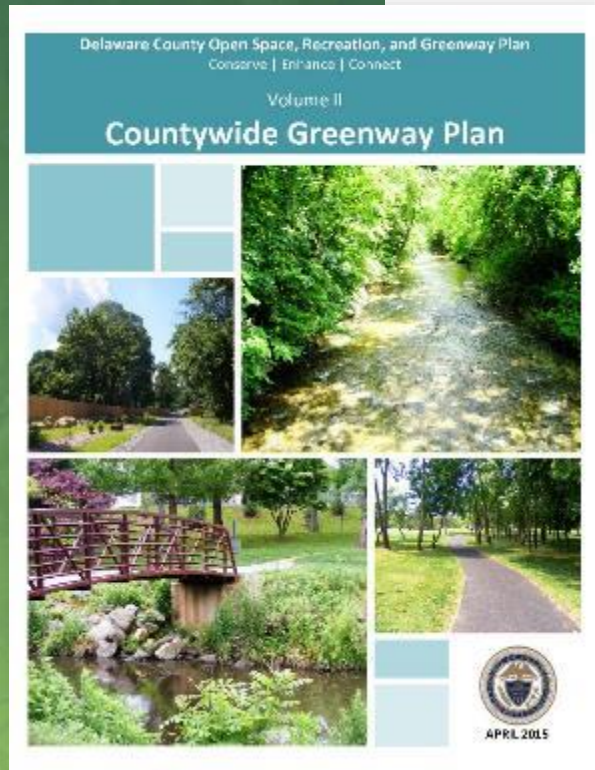
1900 Market Street, suite 300
Philadelphia, PA 19103

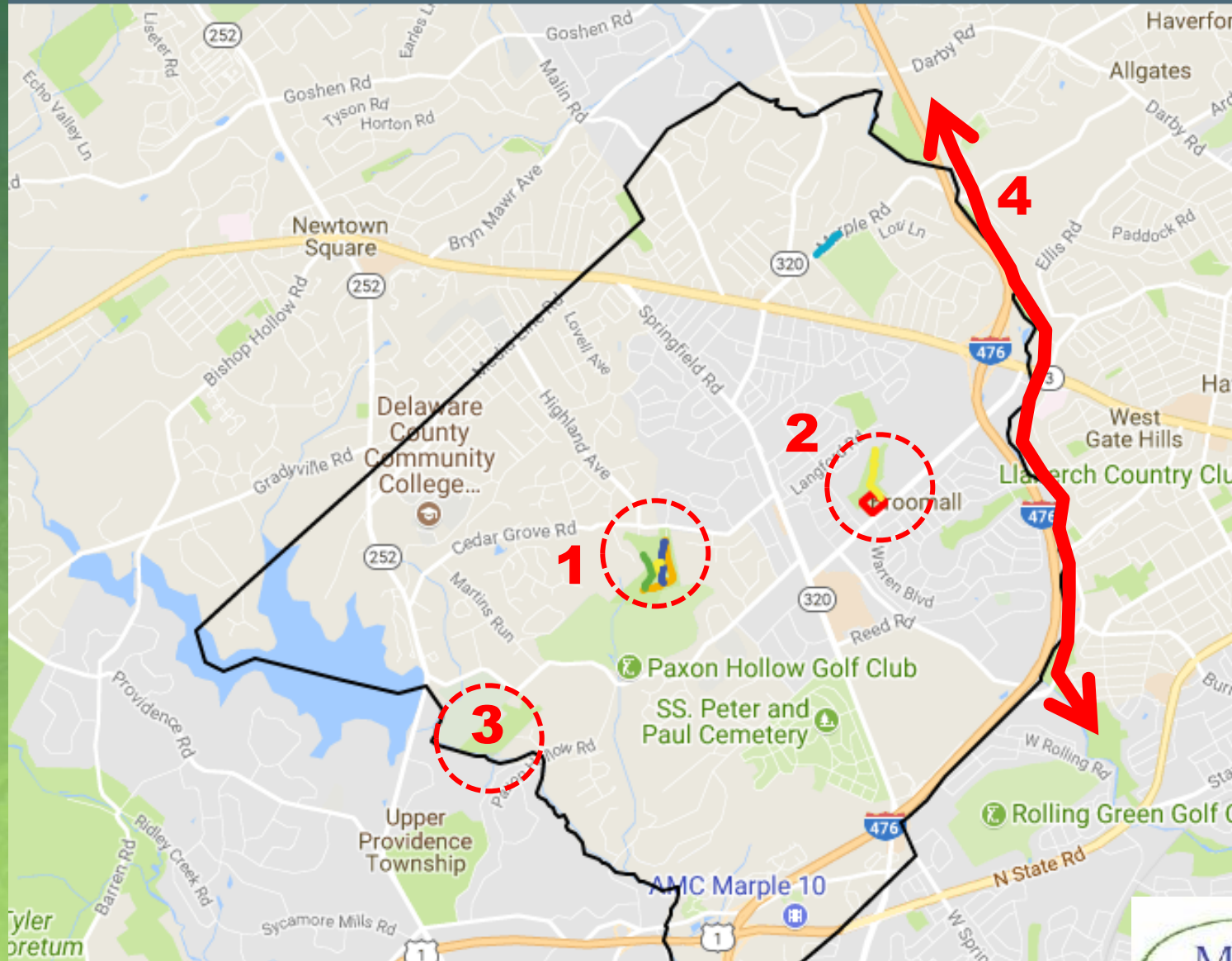
Prepared for:
Marple Township
227 Sproul Road
Broomall, PA 19008



Pennoni

2015 Delaware County Greenway Plan





Existing Trails

1. Kent Park
2. Veterans Park
3. Hildacy Farm
4. Darby Creek Trail (Haverford)

Existing Trails

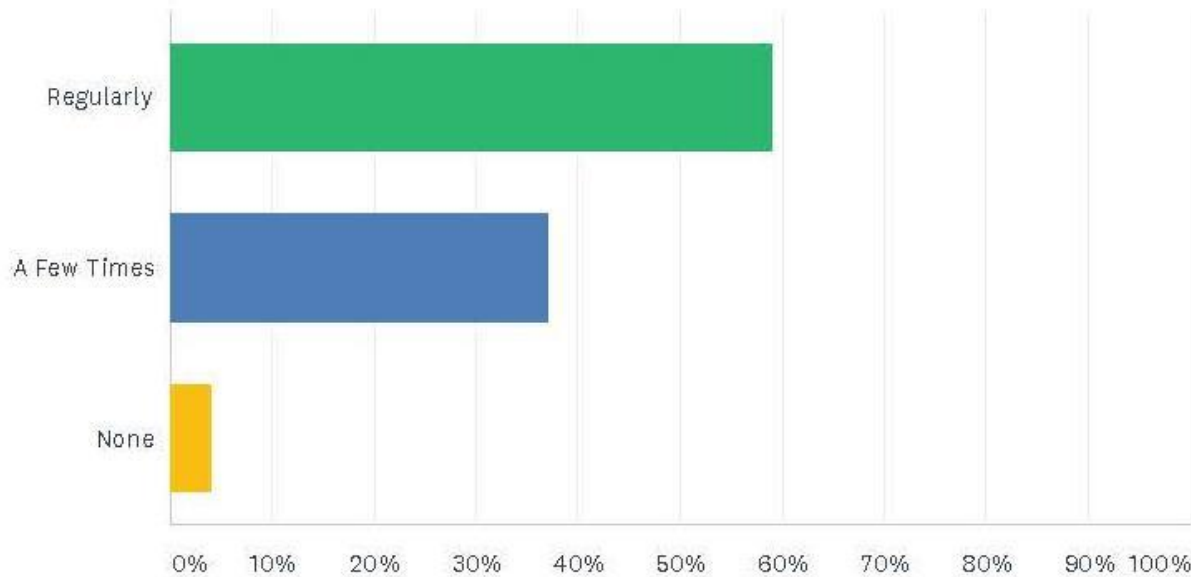
Kent Park



Veterans Park

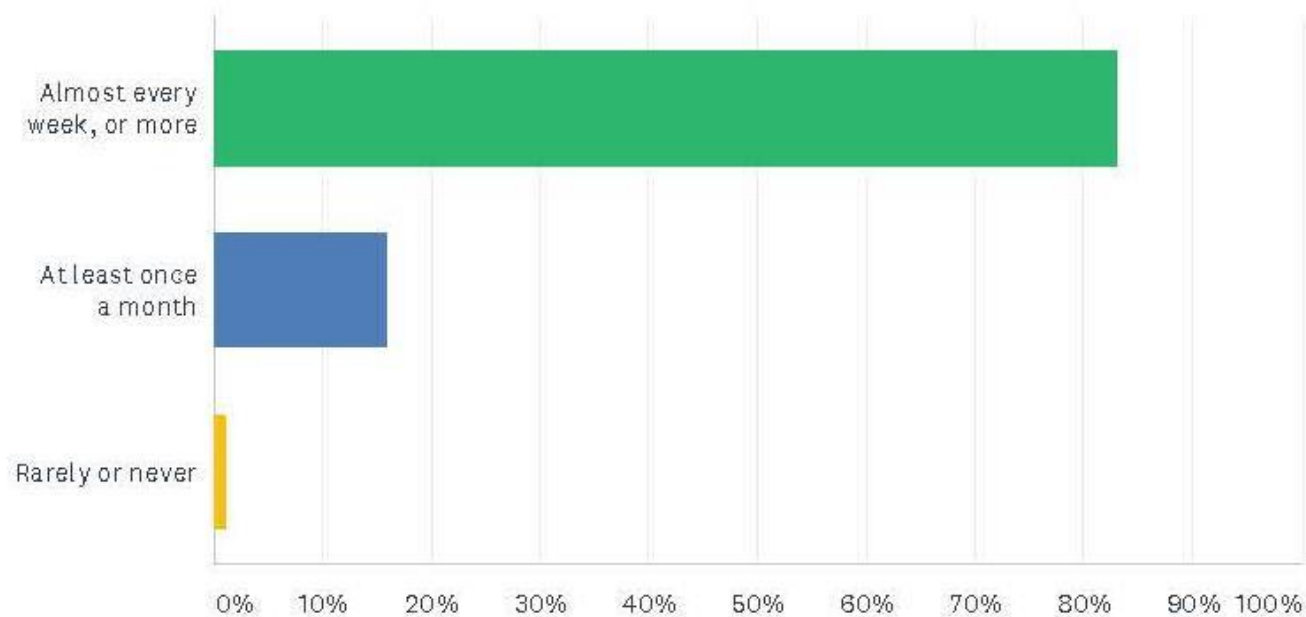
Marple Township Public Opinion Survey

In the past year, about how many times have you used a walking or biking trail, either nearby or somewhere else?



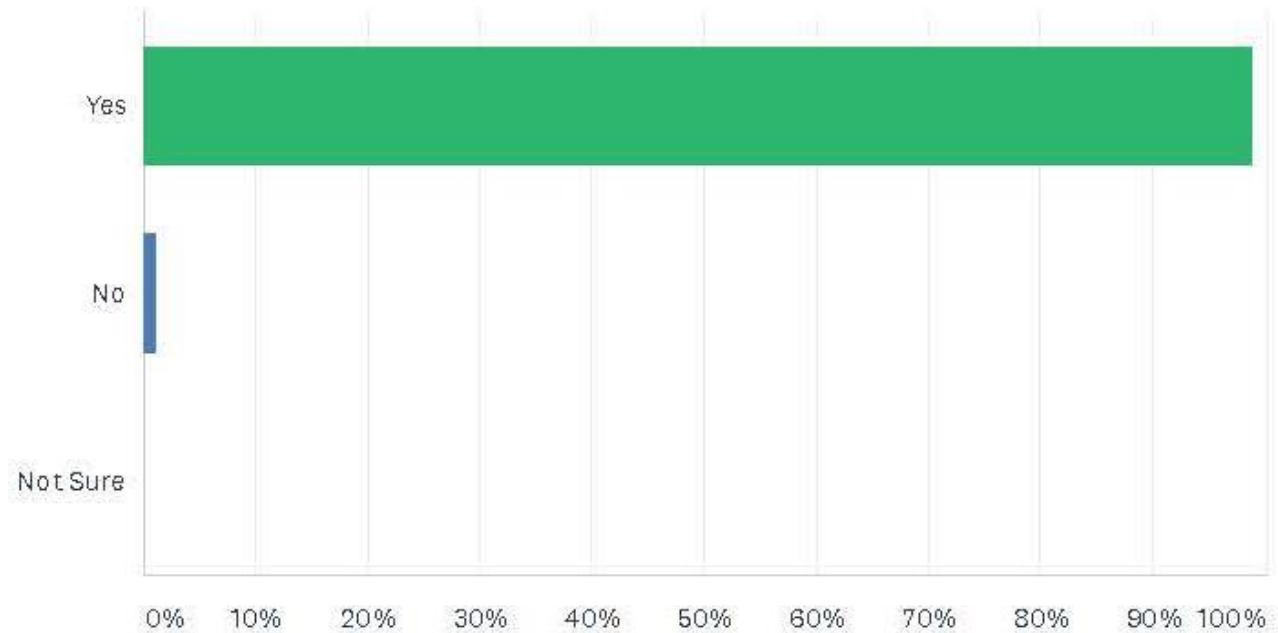
Marple Township Public Opinion Survey

If there was a walking/biking trail nearby and convenient to use, how often do you think you would use it?



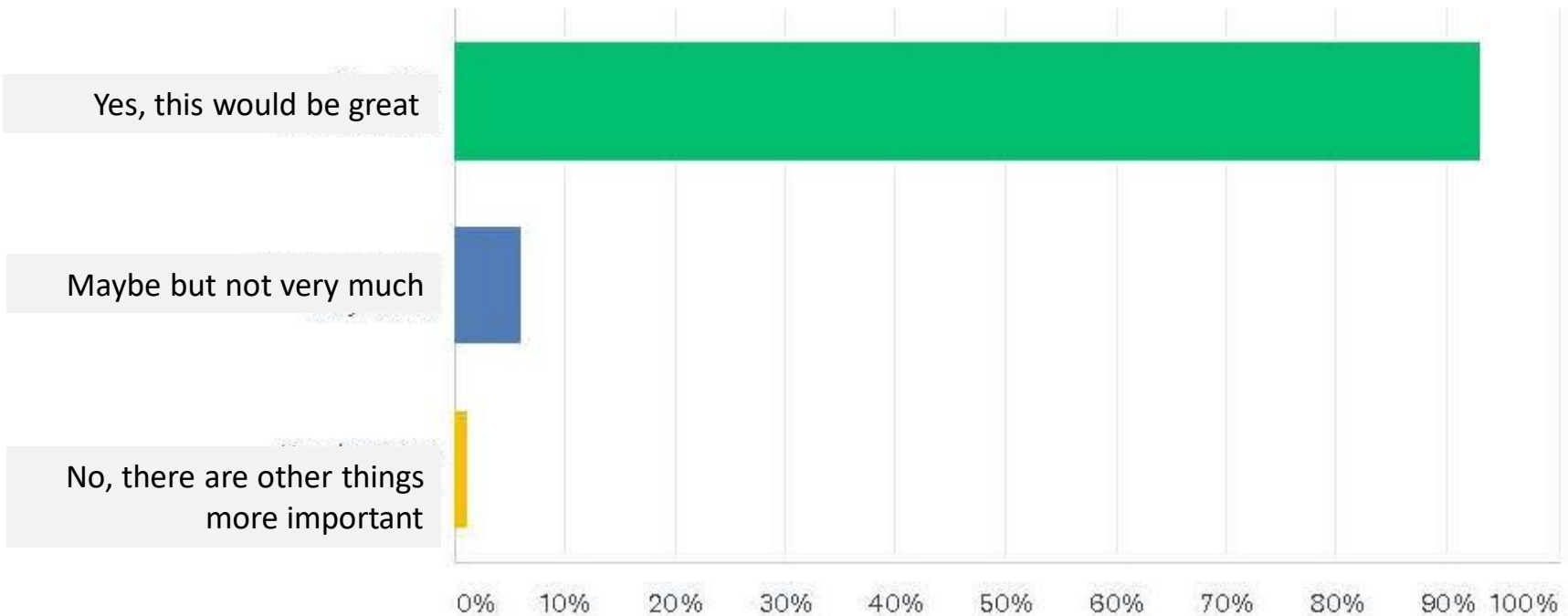
Marple Township Public Opinion Survey

Do you think Marple Township should have more trails for walking and biking?



Marple Township Public Opinion Survey

Do you think the Township should invest Township funds to develop more trails?



Common Opportunities for Trails

Abandoned Railways



Utility Corridors



Marple Township Parks and Open Space

PARKS

- P1 - GREEN BANK FARM PARK
- P2 - KENT PARK
- P3 - LAWRENCE PARK
- P4 - VETERANS PARK
- P5 - NEW ARDMORE PARK
- P6 - MARPLE LITTLE LEAGUE
- P7 - PAXSON HOLLOW GOLF COURSE
- P8 - MALIN RD. TOT LOT
- P9 - MARPLE GARDENS PARK
- P10 - HILDACY FARM PRESERVE

SCHOOLS

- A - CARDINAL O'HARA HIGH SCHOOL
- B - PAXSON HOLLOW HIGH SCHOOL
- C - DELAWARE COUNTY COMMUNITY COLLEGE
- D - CHESTERBROOK ACADEMY
- E - WORREL ELEMENTARY
- F - RUSSEL ELEMENTARY
- G - LOOMIS ELEMENTARY
- H - ST. PIOUS X SCHOOL
- I - DCIU MARPLE EDUCATION CENTER

OTHER OPEN SPACE

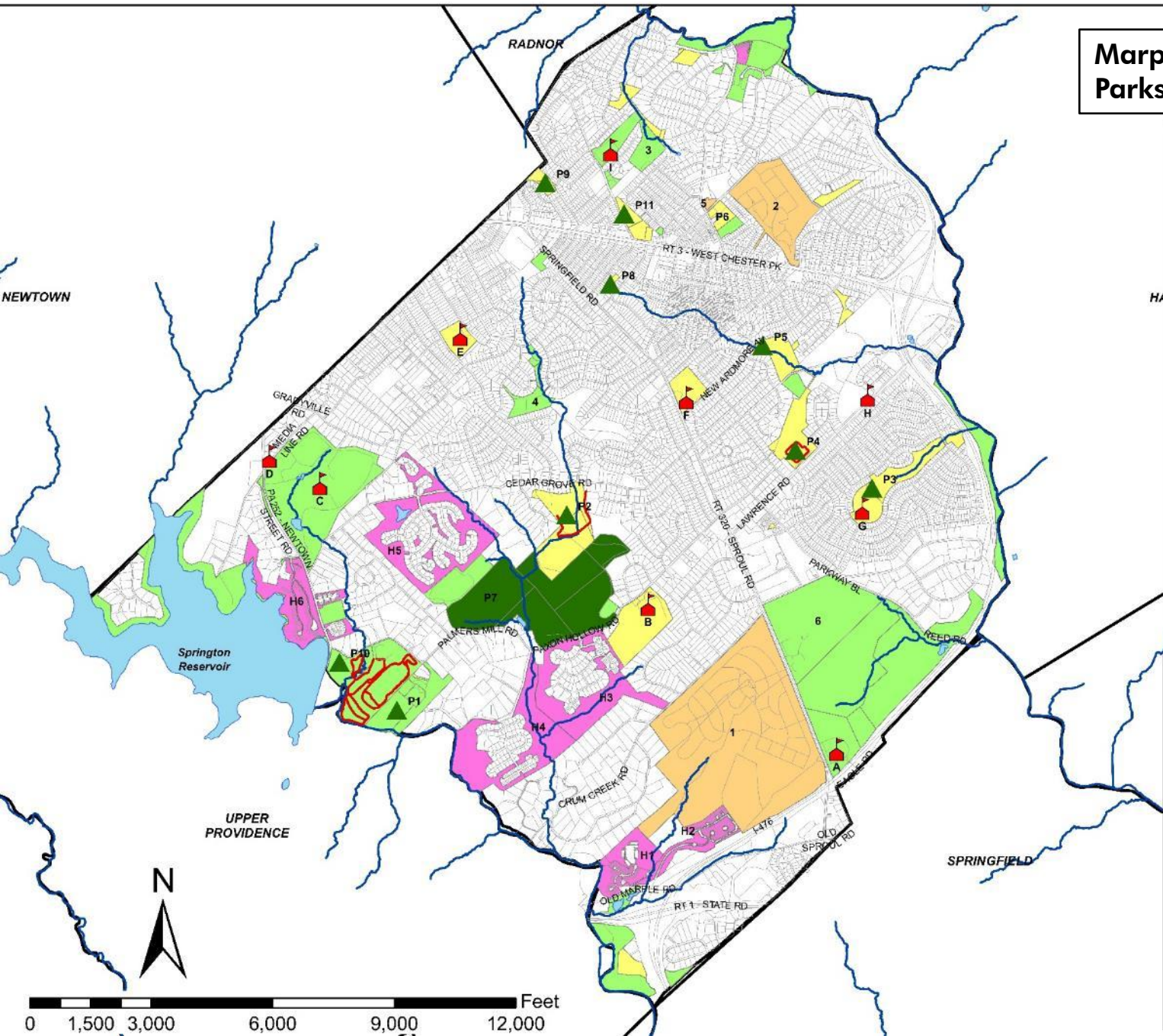
- 1 - ST. PETER & PAUL CEMETERY
- 2 - GLENWOOD CEMETERY
- 3 - MARPLE NEWTOWN SWIM CLUB
- 4 - ROSE TREE SWIM CLUB
- 5 - MARPLE PRESBYTERIAN CHURCH CEMETERY
- 6 - ARCHDIOCESE PROPERTY

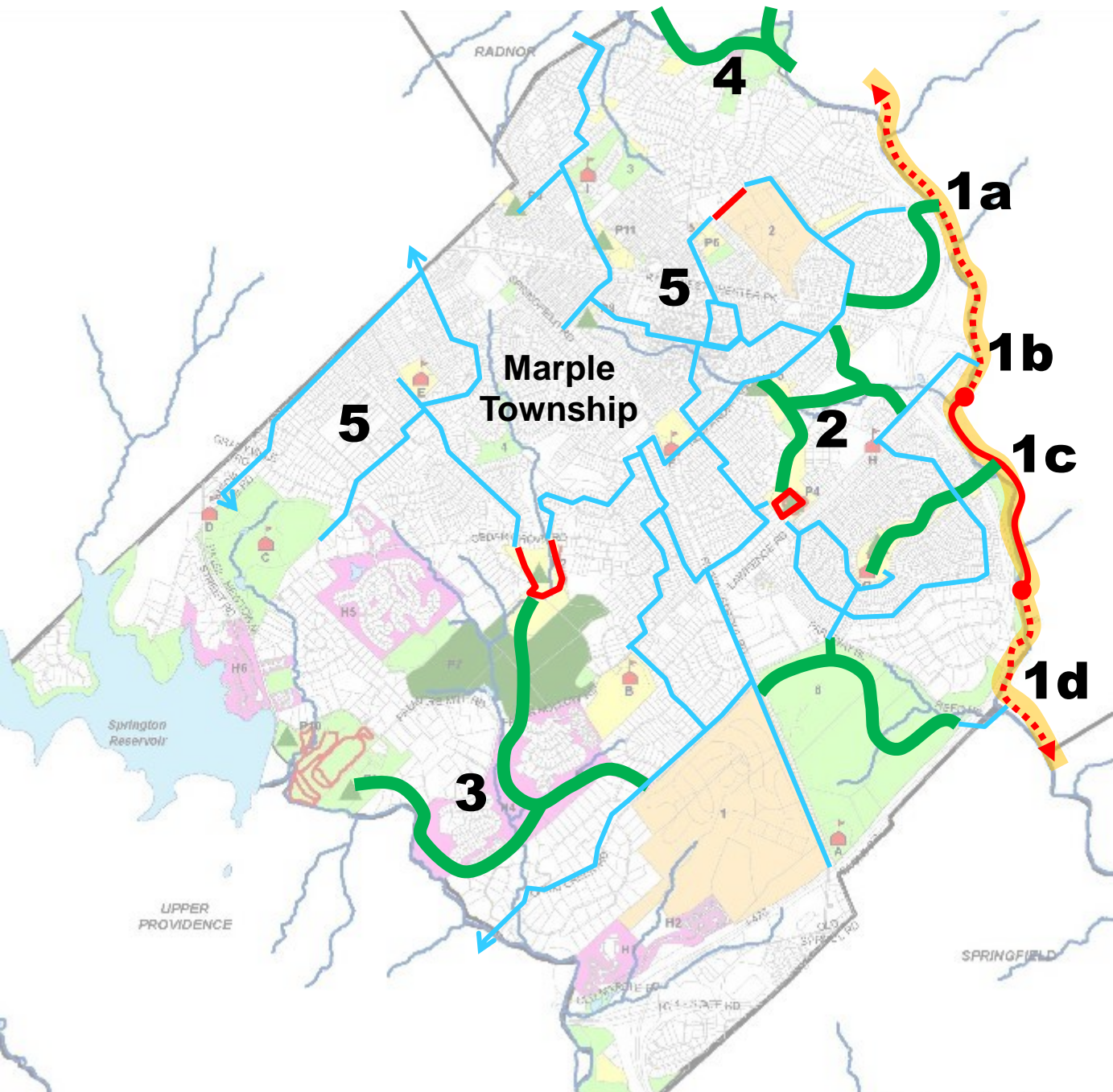
HOA OPEN SPACE

- H1 - RAVENSCLIFF
- H2 - MARPLE WOODS
- H3 - LANGSTON
- H4 - PAXSON CHASE
- H5 - CEDAR GROVE FARM
- H6 - SPRINGTON LAKE VILLAGE

Legend

-  Township Boundary
-  Bodies of Water
-  Streams
-  Existing Trails
-  Parks
-  Schools
- Open Space**
 -  Cemetery
 -  HOA Open Space
 -  Other Open Space
 -  Private and Public Golf Courses
 -  Township Open Space





Marple Township Trail Opportunities

Legend

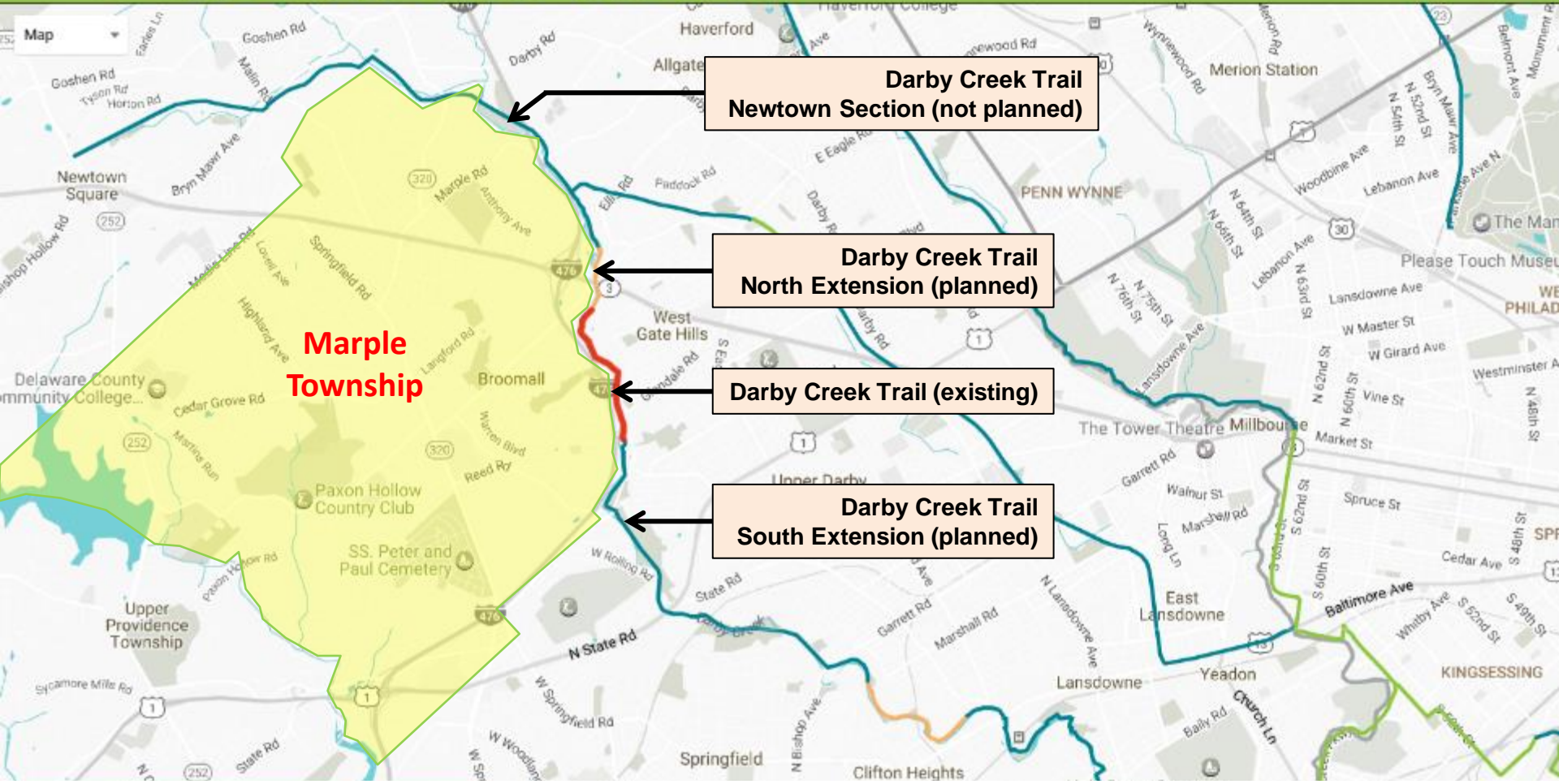
Existing Trail —

Potential Off-Road Trail —

Potential Bike-Friendly Street —

Darby Creek Trail ⬅️⬆️⬇️⬇️⬇️⬆️➡️

1. Darby Creek Trail Connections
2. Veterans Park Connections
3. West of Sproul Rd. off-street connections
4. North to Radnor connection
5. Bike-friendly streets connections





Haverford Reserve

Darby Creek Trail Planned Extension

Proposed
Darby Creek Trail
(north segment)

HAVERFORD

MARPLE



Existing
Darby Creek Trail
(center segment)

Merry Place

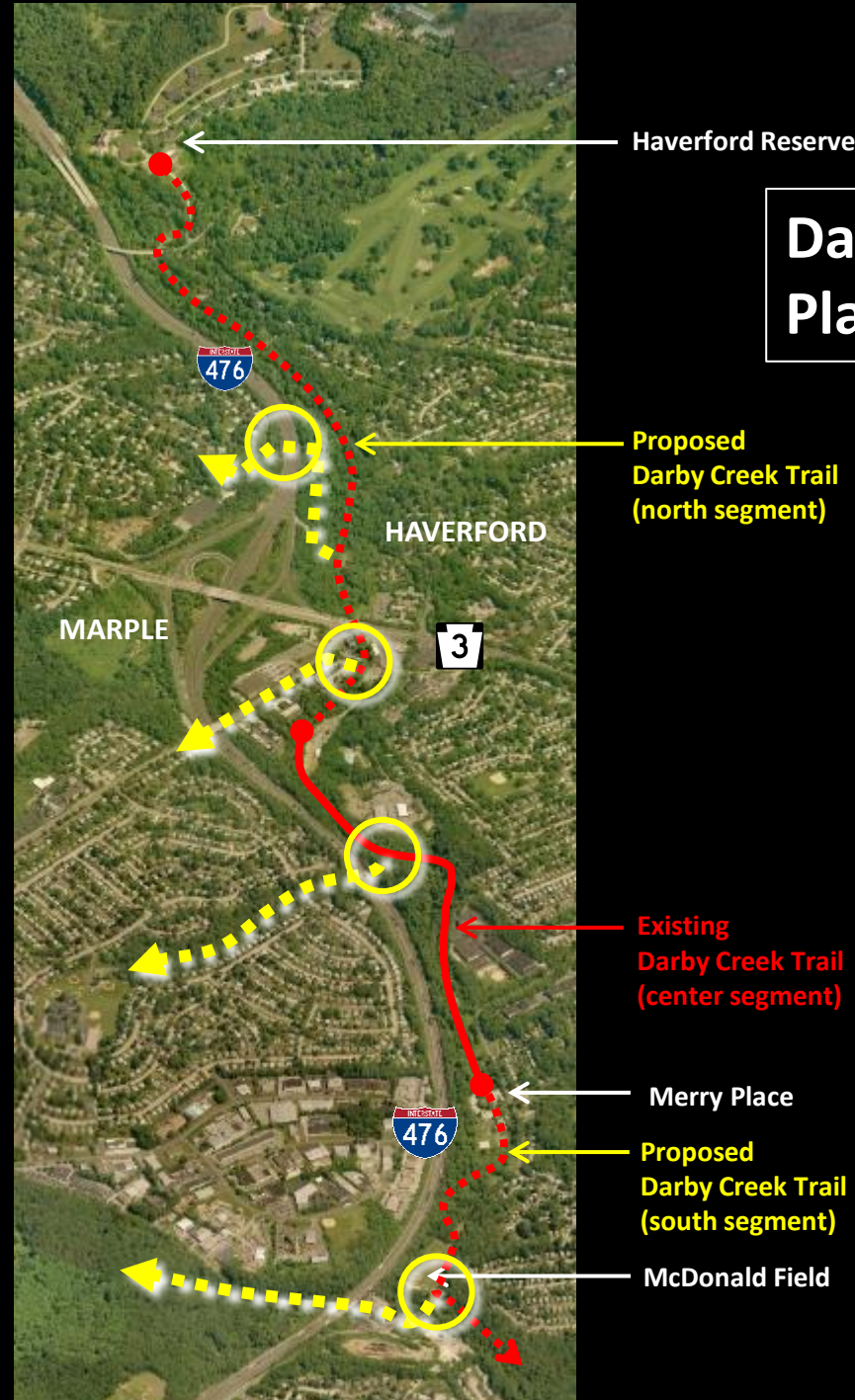
Proposed
Darby Creek Trail
(south segment)

McDonald Field

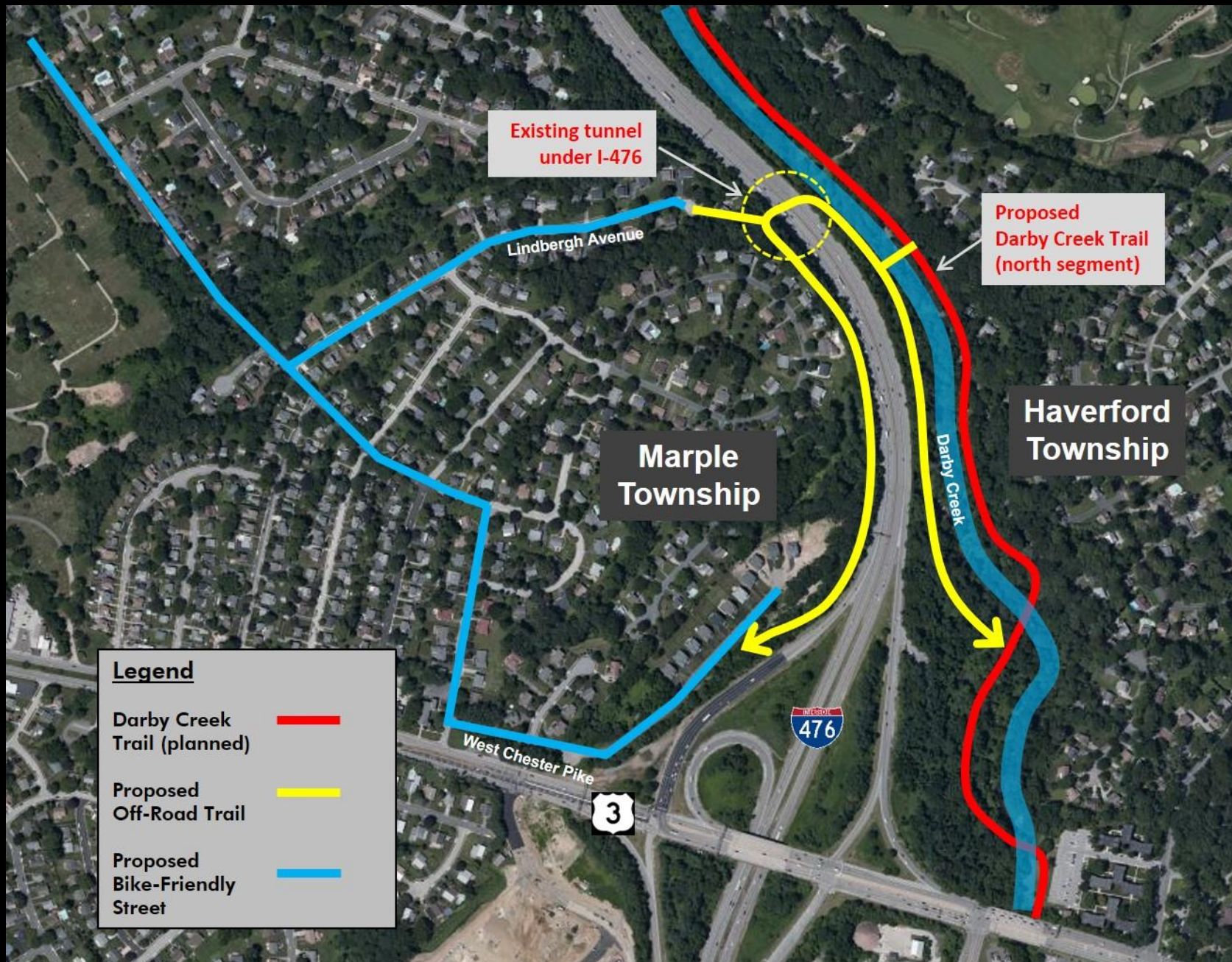
Darby Creek Trail Planned Extension

Potential Crossings

- Existing tunnel Under I-476
(Gamma Swim Club) **1**
- Potential Pedestrian Bridge
Old West Chester Pike **2**
- Existing tunnel Under I-476
(Lawrence Park) **3**
- Reed Road **4**



1 Existing tunnel Under I-476 (former Gamma Swim Club property)



1 Existing tunnel Under I-476 (former Gamma Swim Club property)

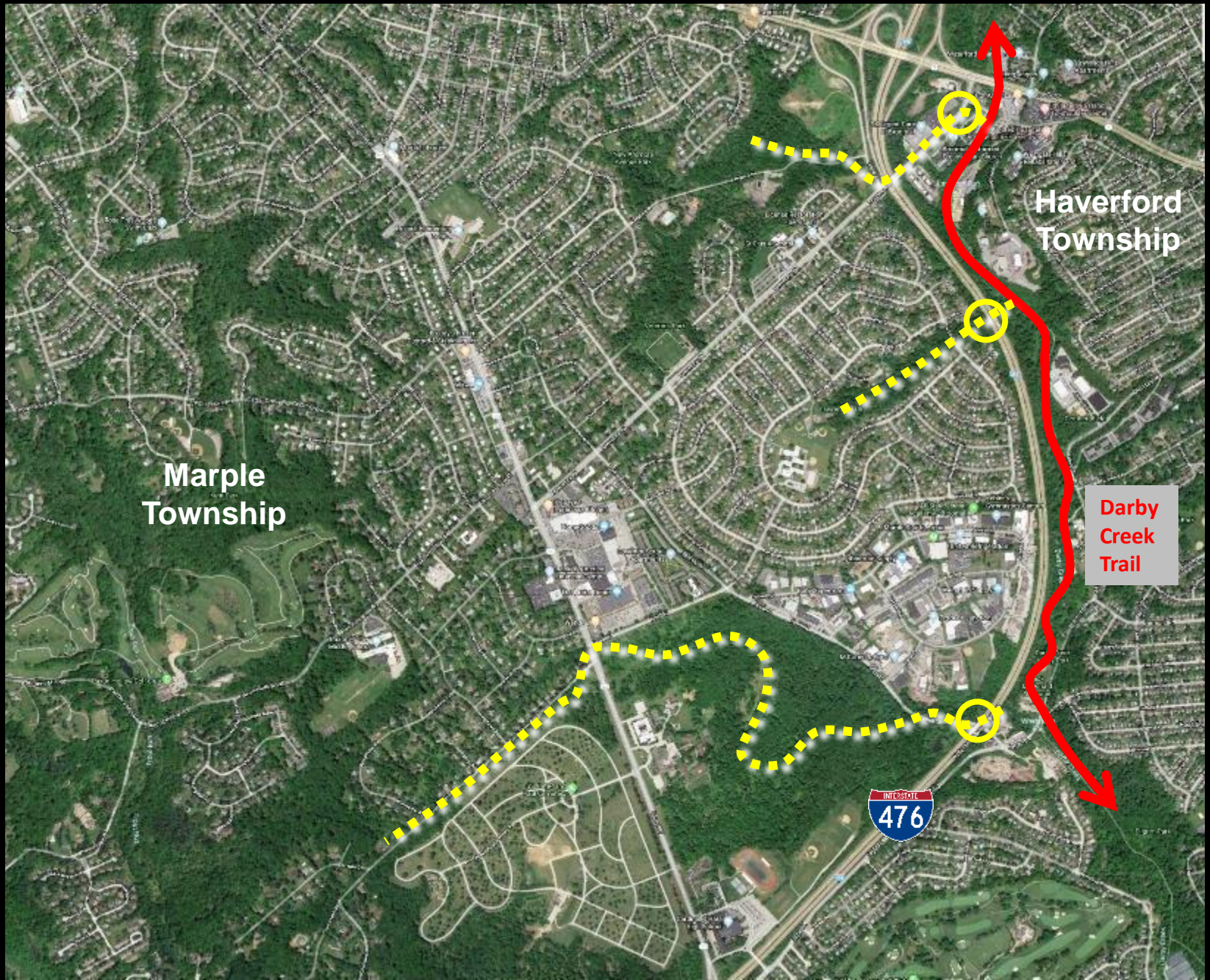


South of Route 3

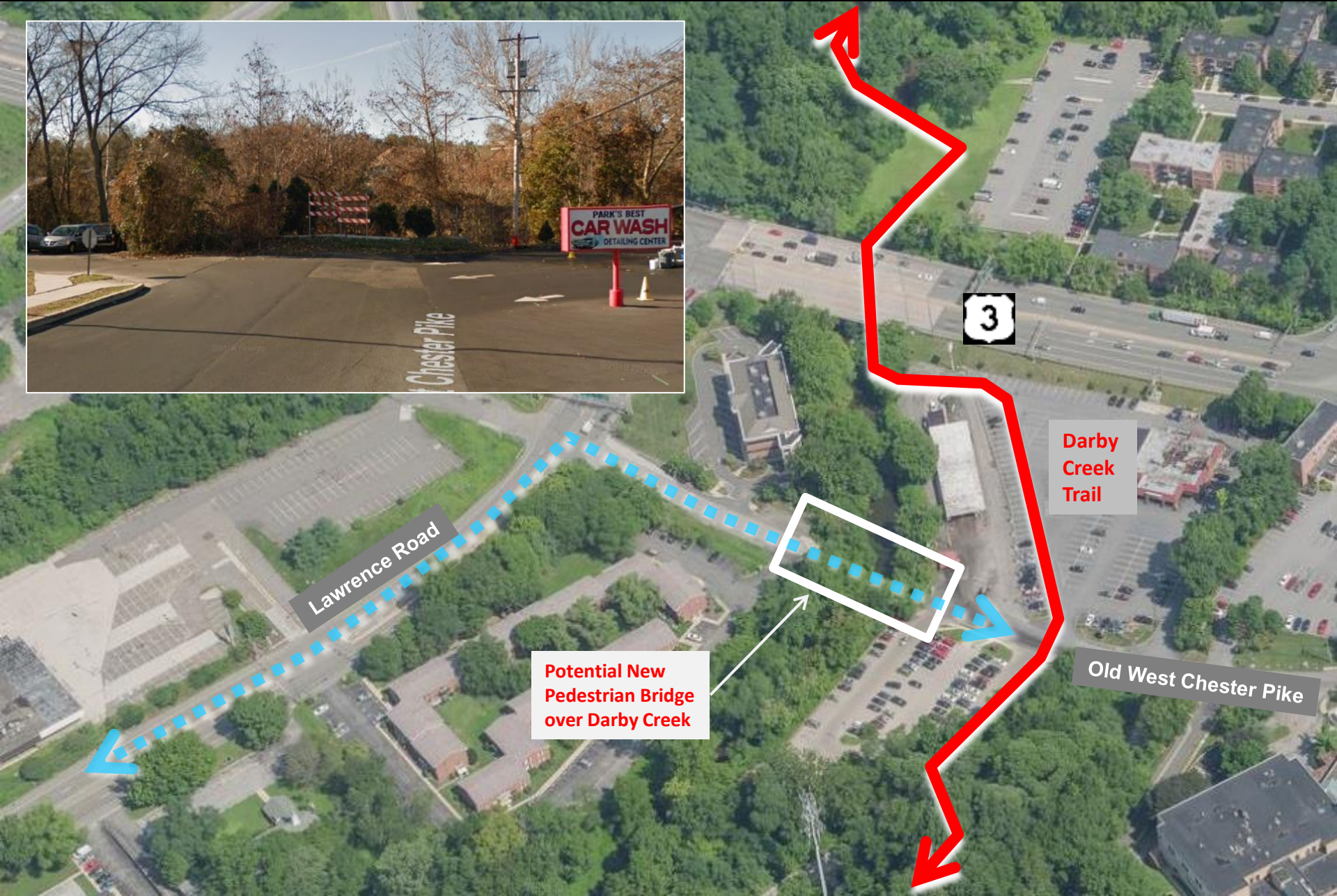
2

3

4



2 New Pedestrian Bridge at old West Chester Pike



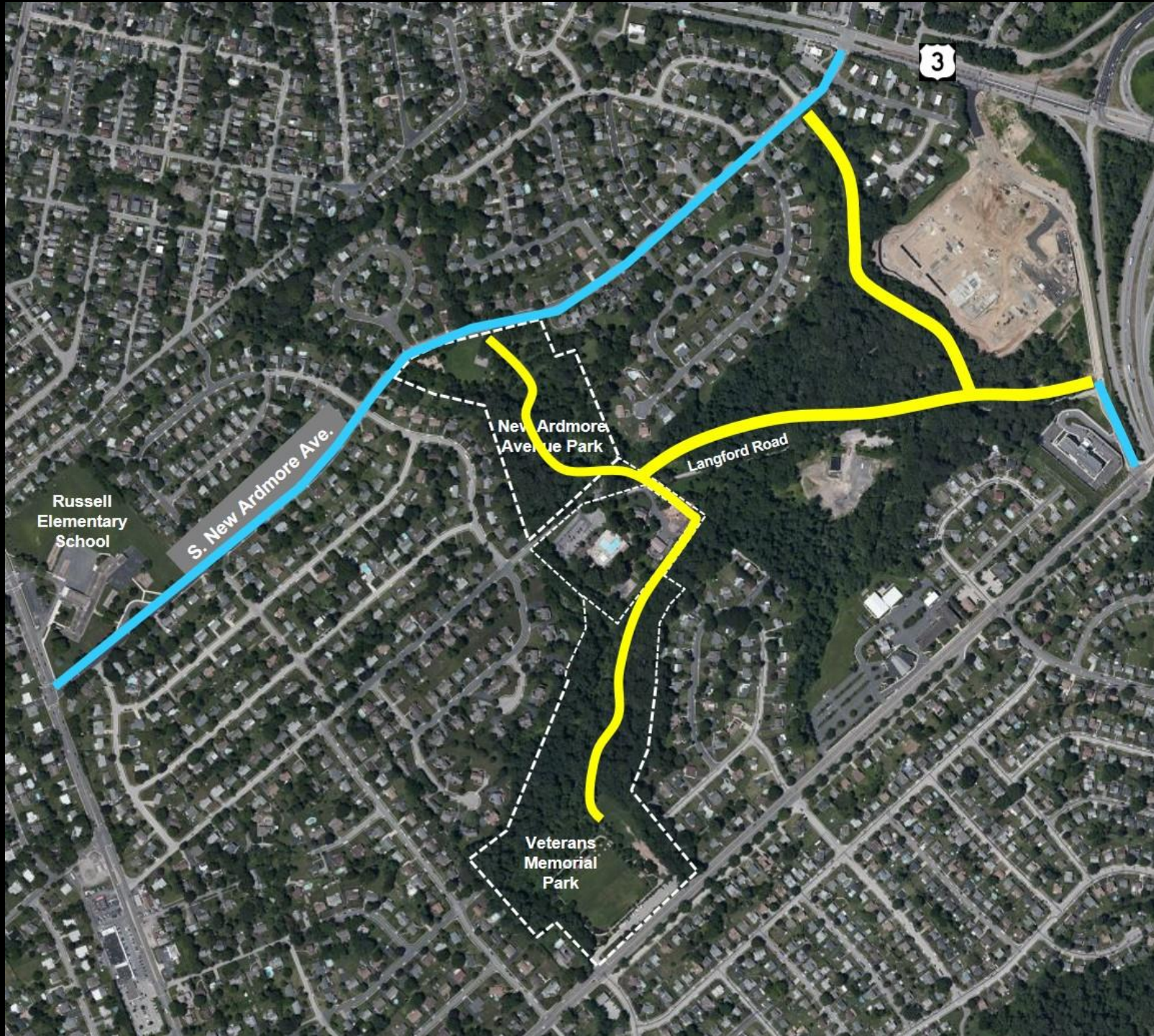
3 Lawrence Park Crossing under I-476, and neighborhood connections



3

Lawrence Park Crossing under I-476





3

Russell
Elementary
School

S. New Ardmore Ave.

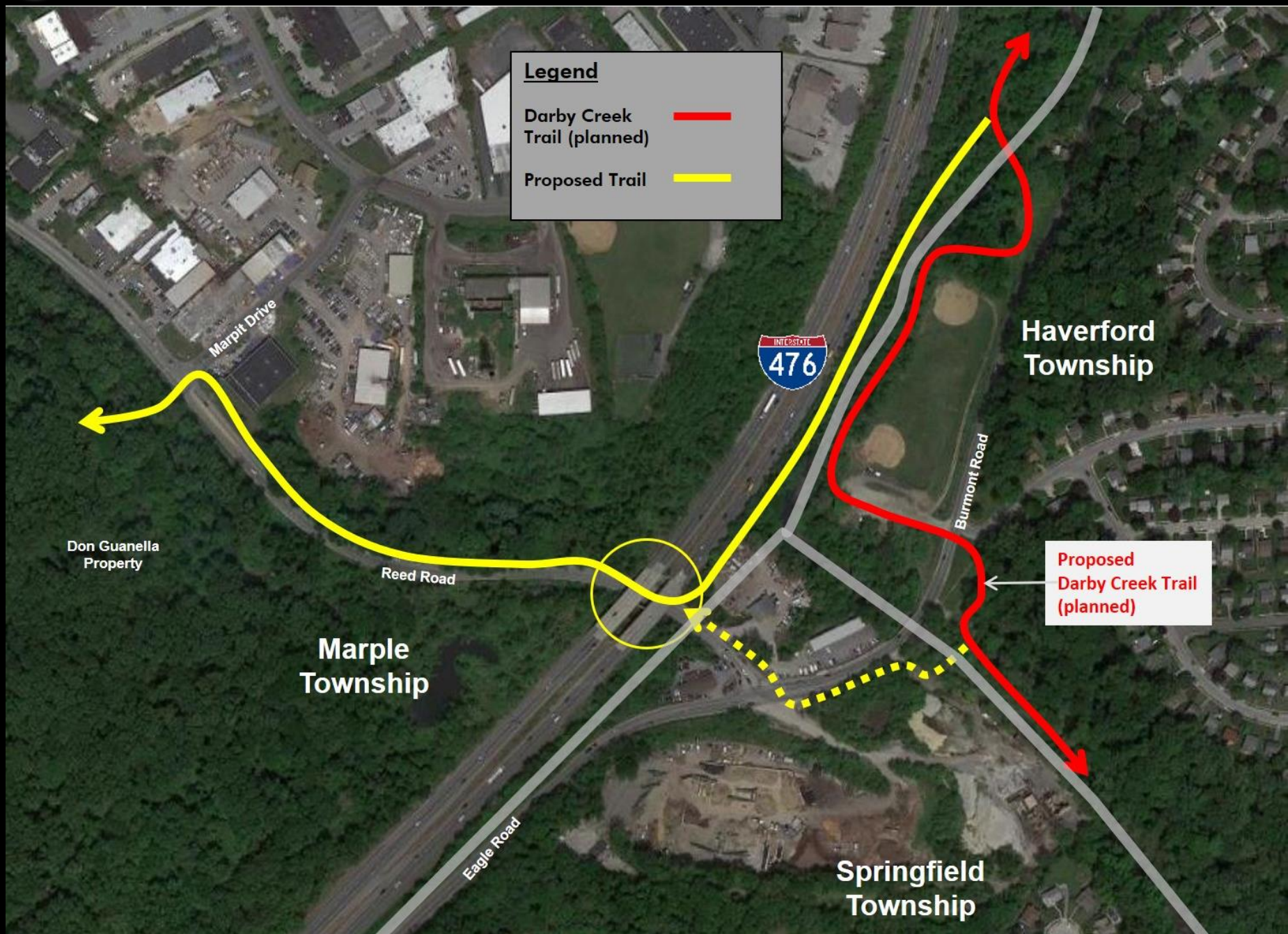
New Ardmore
Avenue Park

Langford Road

Veterans
Memorial
Park

4

Reed Road Crossing under I-476





Marple Township Parks and Open Space

Legend

-  Township Boundary
-  Bodies of Water
-  Streams
-  Existing Trails
-  Parks
-  Schools
- Open Space**
 -  Cemetery
 -  HOA Open Space
 -  Other Open Space
 -  Private and Public Golf Courses
 -  Township Open Space

PARKS

- P1 - GREEN BANK FARM PARK
- P2 - KENT PARK
- P3 - LAWRENCE PARK
- P4 - VETERANS PARK
- P5 - NEW ARDMORE PARK
- P6 - MARPLE LITTLE LEAGUE
- P7 - PAXSON HOLLOW GOLF COURSE
- P8 - MALIN RD. TOT LOT
- P9 - MARPLE GARDENS PARK
- P10 - HILDACY FARM PRESERVE

SCHOOLS

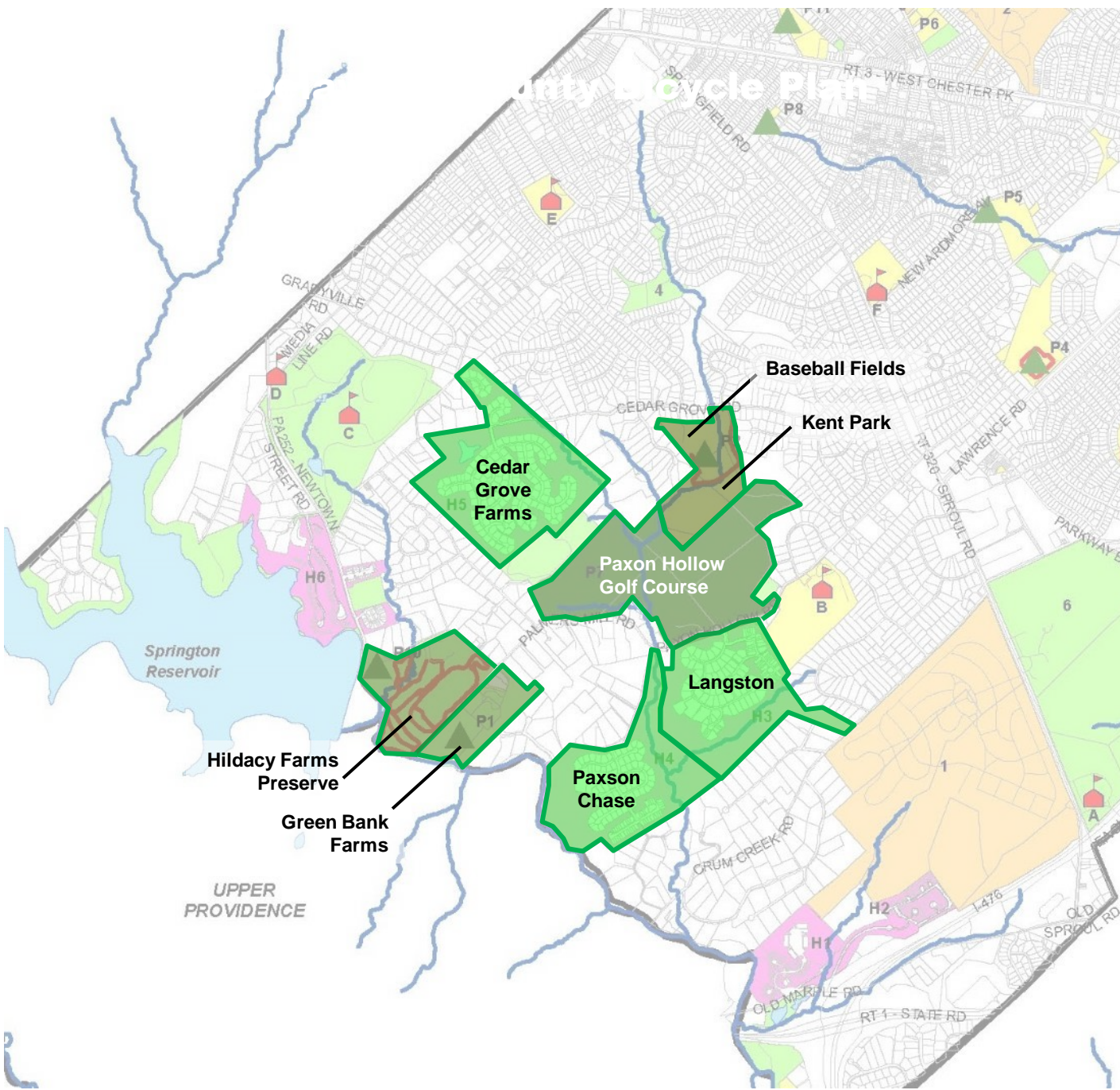
- A - CARDINAL O'HARA HIGH SCHOOL
- B - PAXON HOLLOW HIGH SCHOOL
- C - DELAWARE COUNTY COMMUNITY COLLEGE
- D - CHESTERBROOK ACADEMY
- E - WORREL ELEMENTARY
- F - RUSSEL ELEMENTARY
- G - LOOMIS ELEMENTARY
- H - ST. PIUS X SCHOOL
- I - DCIU MARPLE EDUCATION CENTER

OTHER OPEN SPACE

- 1 - ST. PETER & PAUL CEMETERY
- 2 - GLENWOOD CEMETERY
- 3 - MARPLE NEWTOWN SWIM CLUB
- 4 - ROSE TREE SWIM CLUB
- 5 - MARPLE PRESBYTERIAN CHURCH CEMETERY
- 6 - ARCHDIOCESE PROPERTY

HOA OPEN SPACE

- H1 - RAVENSCLIFF
- H2 - MARPLE WOODS
- H3 - LANGSTON
- H4 - PAXSON CHASE
- H5 - CEDAR GROVE FARM
- H6 - SPRINGTON LAKE VILLAGE





Marple Township Township Trails Master Plan 2020

Prepared by:
Pennoni

1900 Market Street, suite 300
Philadelphia, PA 19103

Prepared for:
Marple Township
227 Sproul Road
Broomall, PA 19008



Pennoni