

# Lansdowne Borough Bicycle Facilities

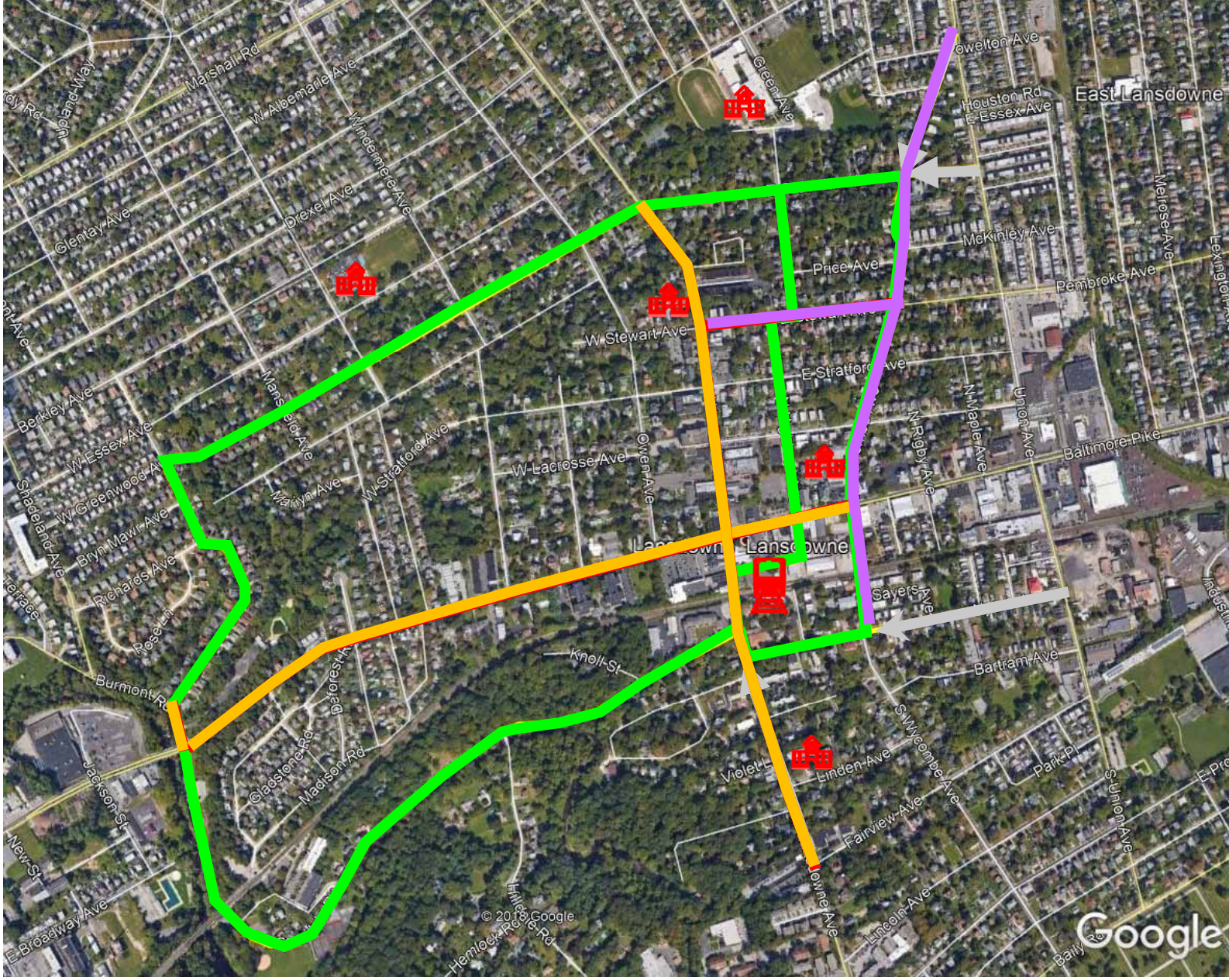
**Benjamin Hover – Borough Council President**

**Craig Totaro – Borough Manager**



# Proposed Routes

- ◆ Main Greenway Loop
  - ❖ ~3 Miles
- ◆ Feeder Streets with bike treatments
- ◆ Lansdowne RR Station
- ◆ Schools
- ◆ State Routes
  - ❖ Baltimore Ave. (SR 2016)
  - ❖ Lansdowne Ave. (SR 2005)
  - ❖ Stewart Ave. (SR 2022)
  - ❖ Burmont Road (SR 2007)
- ◆ Functional Classes
  - ❖ Arterials
  - ❖ Collectors



# Darby Creek Greenway Trail through Hoffman Park @ Scottsdale Road



# Darby Creek Greenway Trail proposed along east/southeast Scottsdale Road



# Neighborhood and Commuter Route - looking south on Wycombe Avenue

