

# Delaware County Trail & Bike Funding, Planning, & Development Update

Philadelphia Western Suburbs Trail Summit  
February 1, 2020

Steve Beckley  
Delaware County Planning Department  
[www.delcopa.gov/planning](http://www.delcopa.gov/planning)

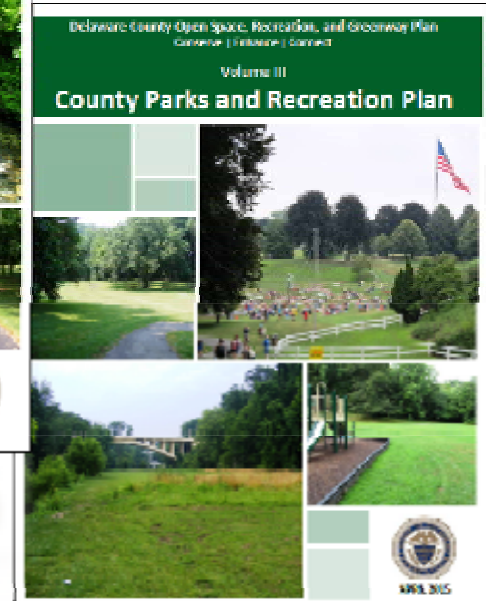
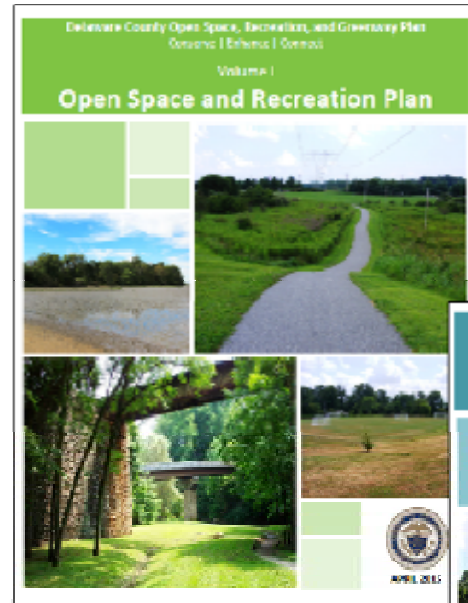


# Delco Green Ways Grant Program

# OPEN SPACE, RECREATION, AND GREENWAY PLAN



Adopted  
April 22,  
2015

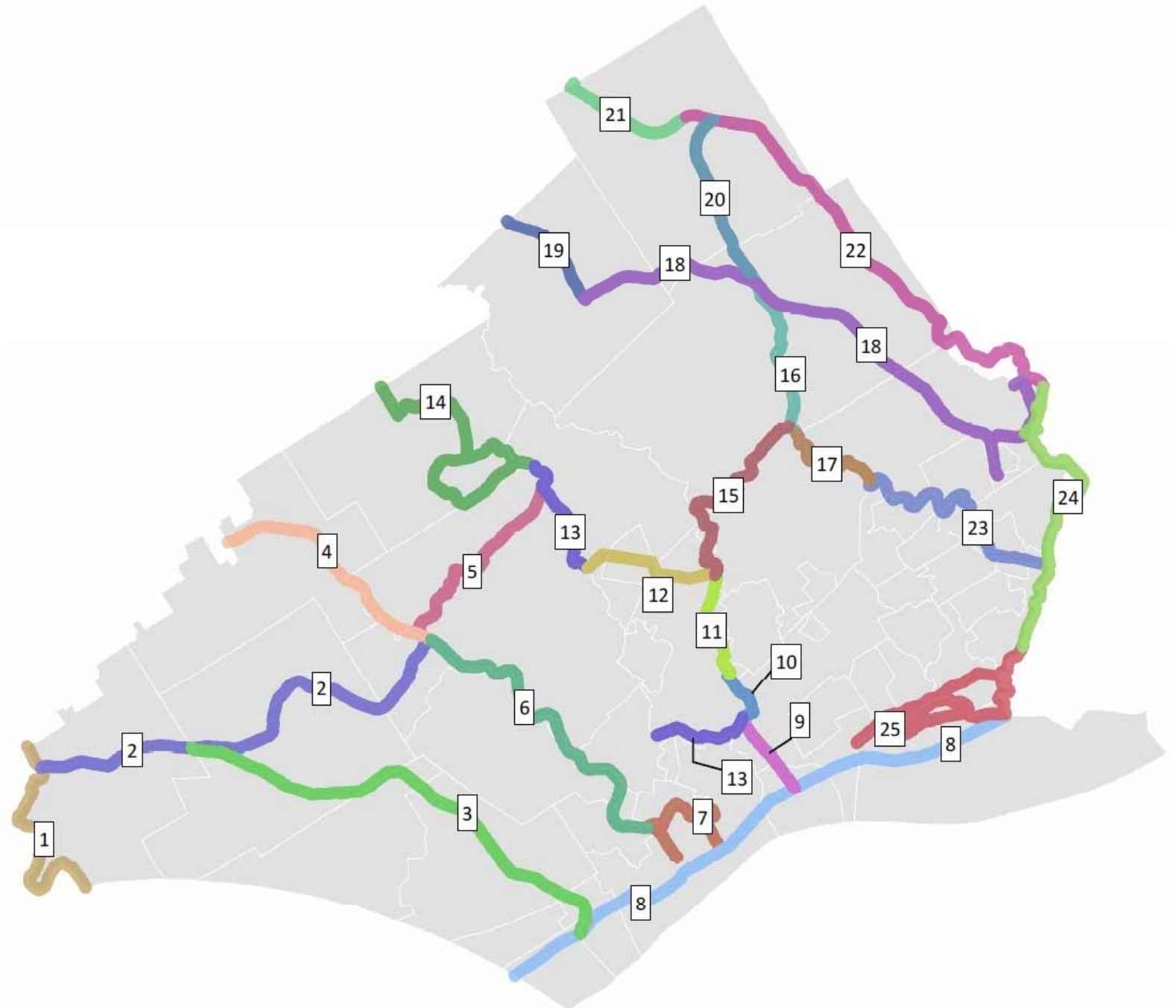


Goals:

**CONSERVE – ENHANCE – CONNECT**

# DELAWARE COUNTY – PRIMARY TRAIL NETWORK

Delaware County Open Space, Recreation, and Greenway Plan  
Conserve | Enhance | Connect  
Volume II  
**Countywide Greenway Plan**



# Open Space Task Force

**What are obstacles to making progress?**

Money. Staff time. Consistent level of administrative services.

**How can we be creative and proactive?**

Make investments to meet goals at the county and municipal level.

Follow the County Plan.  
Plan and work together with neighbors.

# DELAWARE COUNTY

## OPEN SPACE TASK FORCE:

### OSRGP Recommended Implementation Strategy (Approved 9/12/18 by County Council)

- **Funded by \$10 Million Bond**  
(Approved 10/17/18 by County Council)



For details, visit: [www.co.delaware.pa.us/planning/](http://www.co.delaware.pa.us/planning/)

## OPEN SPACE TASK FORCE STRATEGY & FUNDING

### Investment Categories Include:

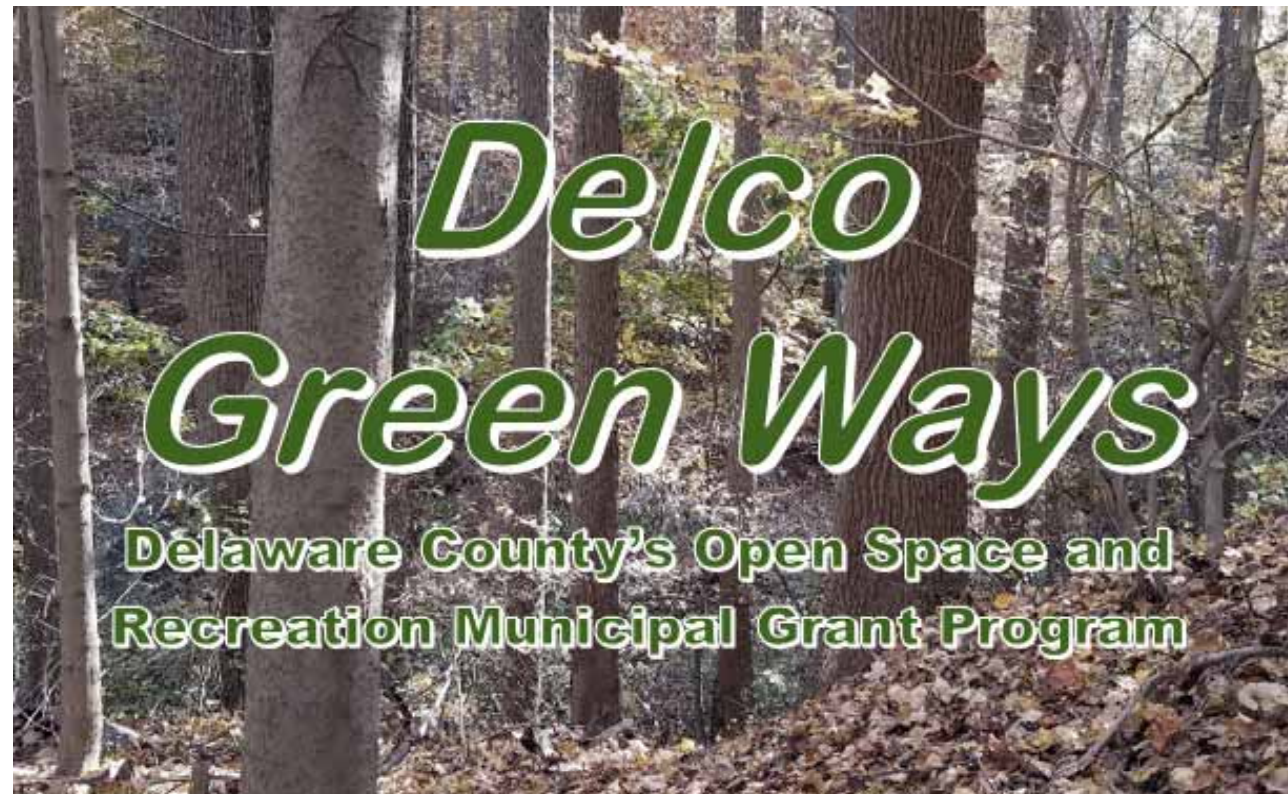
- Grants to Municipalities
- Investment in County-Owned projects:
  - Park System
  - Trails

### Municipal Grants - Eligible Projects:

- Open Space Preservation (CONSERVE),
- Park Devel./Regreening (ENHANCE),
- **Multi-Use Trails Development (CONNECT)**
- Professional Services Support (Plans, Studies, Engineering)



# DELAWARE COUNTY OPEN SPACE & RECREATION MUNICIPAL GRANT PROGRAM



For more details visit: [www.delcopa.gov/planning](http://www.delcopa.gov/planning)



## PROJECT TYPES & AWARD AMOUNT LIMITS



1. **Conserve (preservation of open space)**
  - Awards of up to \$500,000, but not more than 25% of the total project costs.
2. **Enhance (capital improvement of parks and public open spaces)**
  - Awards of up to \$100,000, but not more than 25% of the total project costs.
3. **Connect (trail development)**
  - For trails that are part of the County Primary Trail Network (PTN):
    - Awards of up to \$500,000, but not more than 25% of the total project costs.
  - For local, non PTN trails:
    - Awards of up to \$100,000, but not more than 10% of the total project costs.
4. **Professional Services Support (plans, studies, designs, etc.)**
  - Up to \$100,000, but not more than 25% of the total project costs.

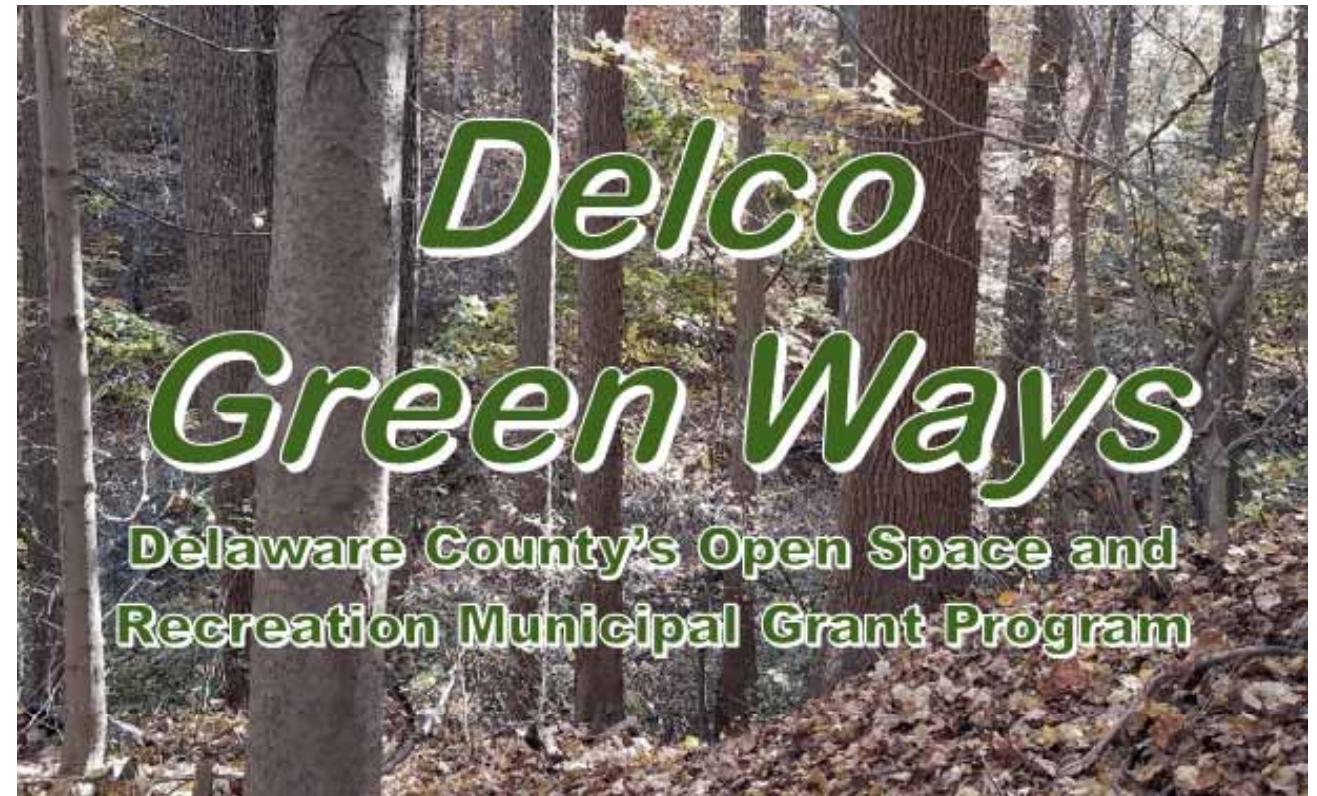
\*All project types require a local match requirement of at least 10%.

\*Amount of the award based on actual project costs, not estimates.

For more details visit: [www.delcopa.gov/planning](http://www.delcopa.gov/planning)

## Round 1 Guidelines and Application

- Announced and Opened 7/10/19. Applications were due 9/9/19.
- Final Application adapted from model included in Task Force Strategy.
- Surrounding Counties programs' guidelines and applications also used as examples and as templates for application elements.



# OPEN SPACE & RECREATION MUNICIPAL GRANT PROGRAM

## Round 1 Procedure

- A team of County staff reviewed grant applications.
- The team passed comments on to County Council.
- Council announced awards on October 23, 2019.

## Submissions

- 38 applications
- 26 municipalities; 4 with multiple projects
- All were eligible projects
- All were awarded funds (\$4.5 million total)



For more details visit: [www.delcopa.gov/planning](http://www.delcopa.gov/planning)

# DELCO GREEN WAYS GRANTS

## ROUND 1 - AWARDED GRANT PROJECTS

### (Trail-Related)

#### Connect (trail development)

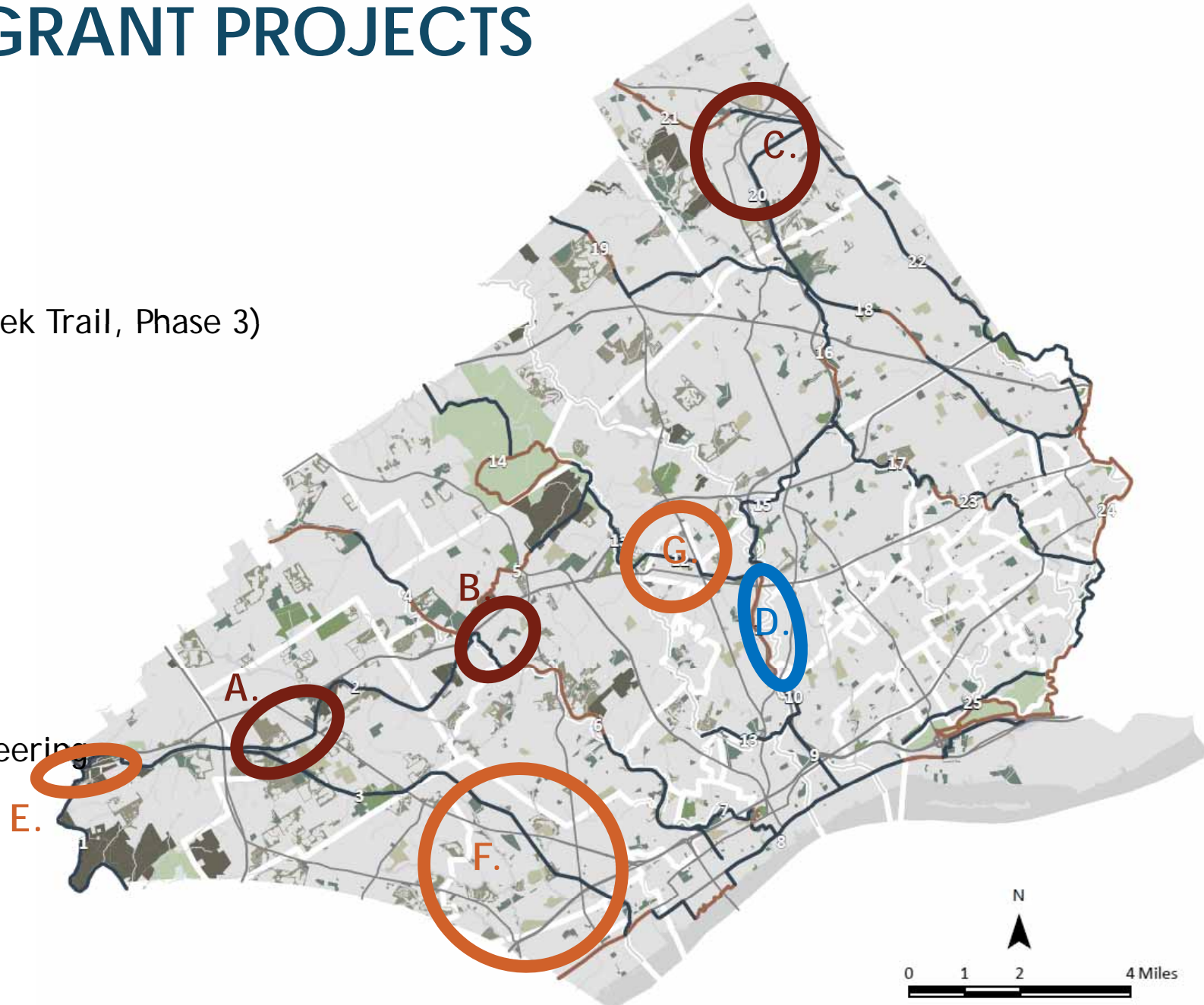
- A. Octoraro Trail Construction Phase 1B  
- *Concord Twp. \$367,750*
- B. Mint Trail Construction (contains Chester Creek Trail, Phase 3)  
- *Middletown Twp. \$500,000*
- C. Radnor TAP Trail Construction  
- *Radnor Twp. \$500,000*

#### Enhance (capital improvement)

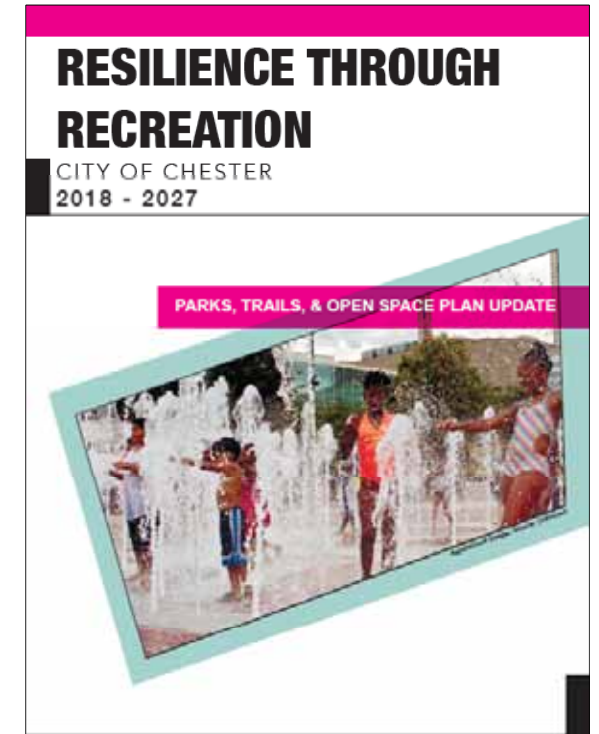
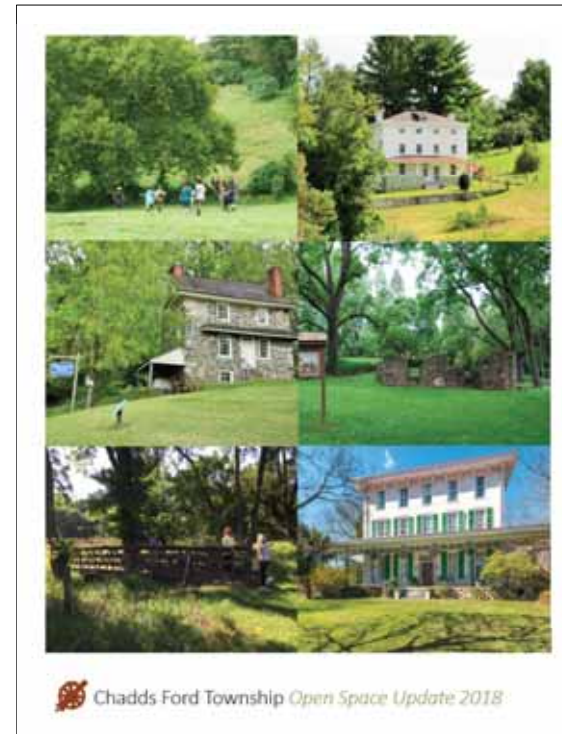
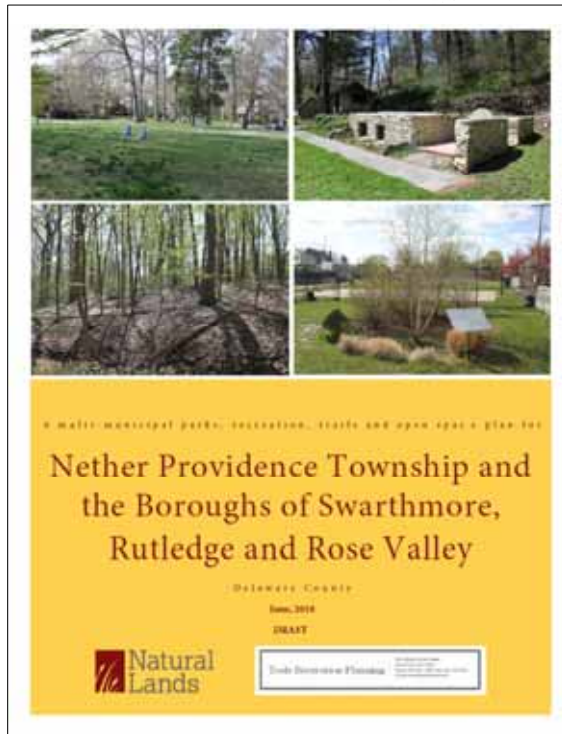
- D. Leiper-Smedley Trail Improvements  
- *Nether Providence Twp. \$35,000*

#### Professional Services Support

- E. Walkable Chadds Ford Trail Design and Engineering  
- *Chadds Ford Twp. \$100,000*
- F. Master Parks and Recreation Plan  
- *Upper Chichester Twp. \$20,000*
- G. Borough Open Space Plan  
- *Media Borough \$17,500*



# MUNICIPAL OPEN SPACE & GREENWAY PLANS - 2018

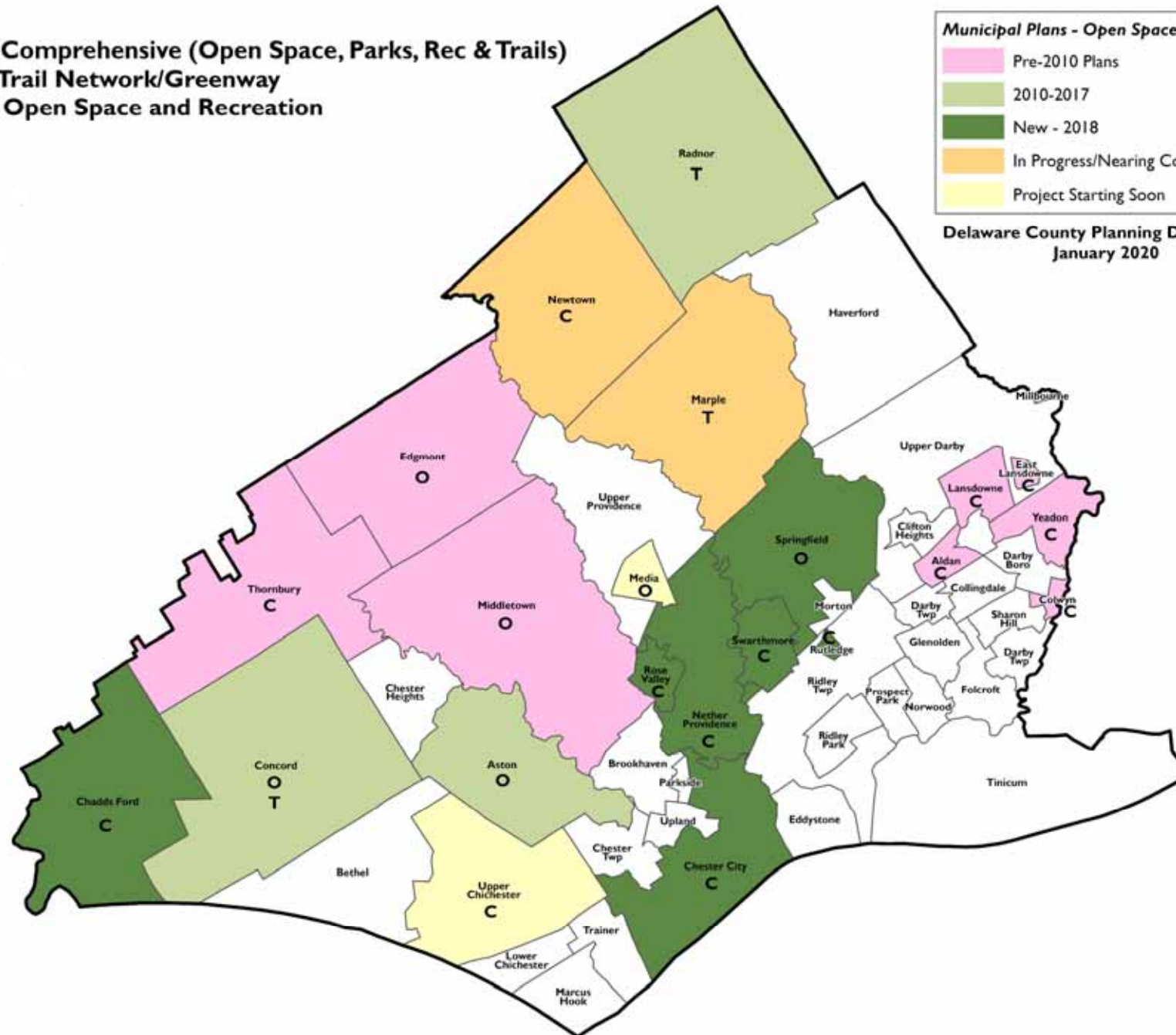


# MUNICIPAL OPEN SPACE & GREENWAY PLANS

**C = Comprehensive (Open Space, Parks, Rec & Trails)**  
**T = Trail Network/Greenway**  
**O = Open Space and Recreation**



Delaware County Planning Department  
January 2020

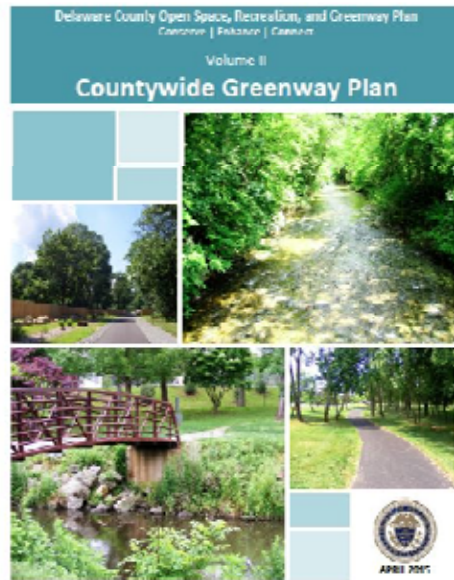




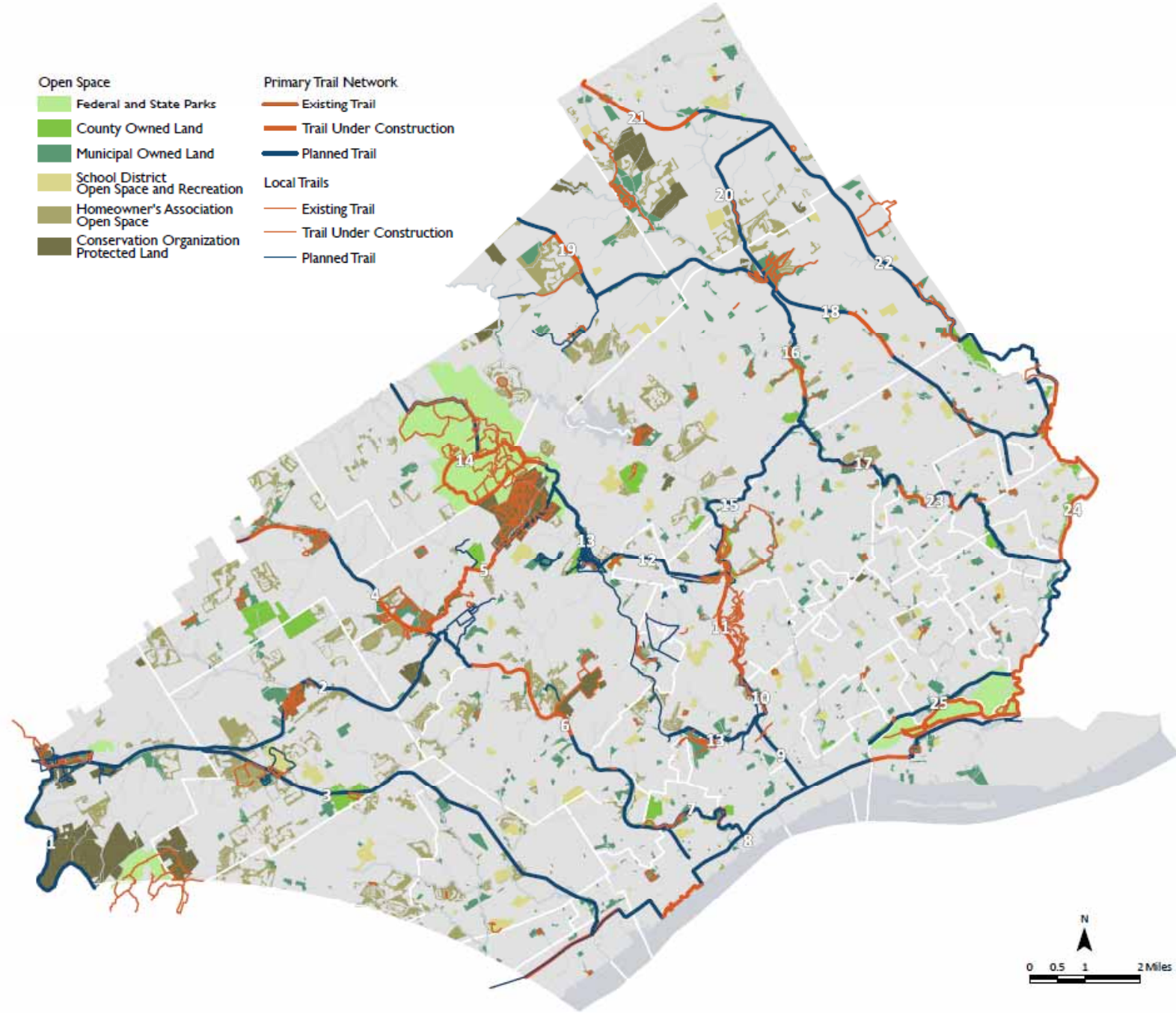
# County-Led Trail Projects

# DELAWARE COUNTY

## PRIMARY TRAIL NETWORK



- Open Space**
  - Federal and State Parks
  - County Owned Land
  - Municipal Owned Land
  - School District Open Space and Recreation
  - Homeowner's Association Open Space
  - Conservation Organization Protected Land
- Primary Trail Network**
  - Existing Trail
  - Trail Under Construction
  - Planned Trail
- Local Trails**
  - Existing Trail
  - Trail Under Construction
  - Planned Trail





# DELAWARE COUNTY

## PRIMARY TRAIL NETWORK



**THE  
CIRCUIT  
TRAILS**

100s OF MILES  
OF HAPPY



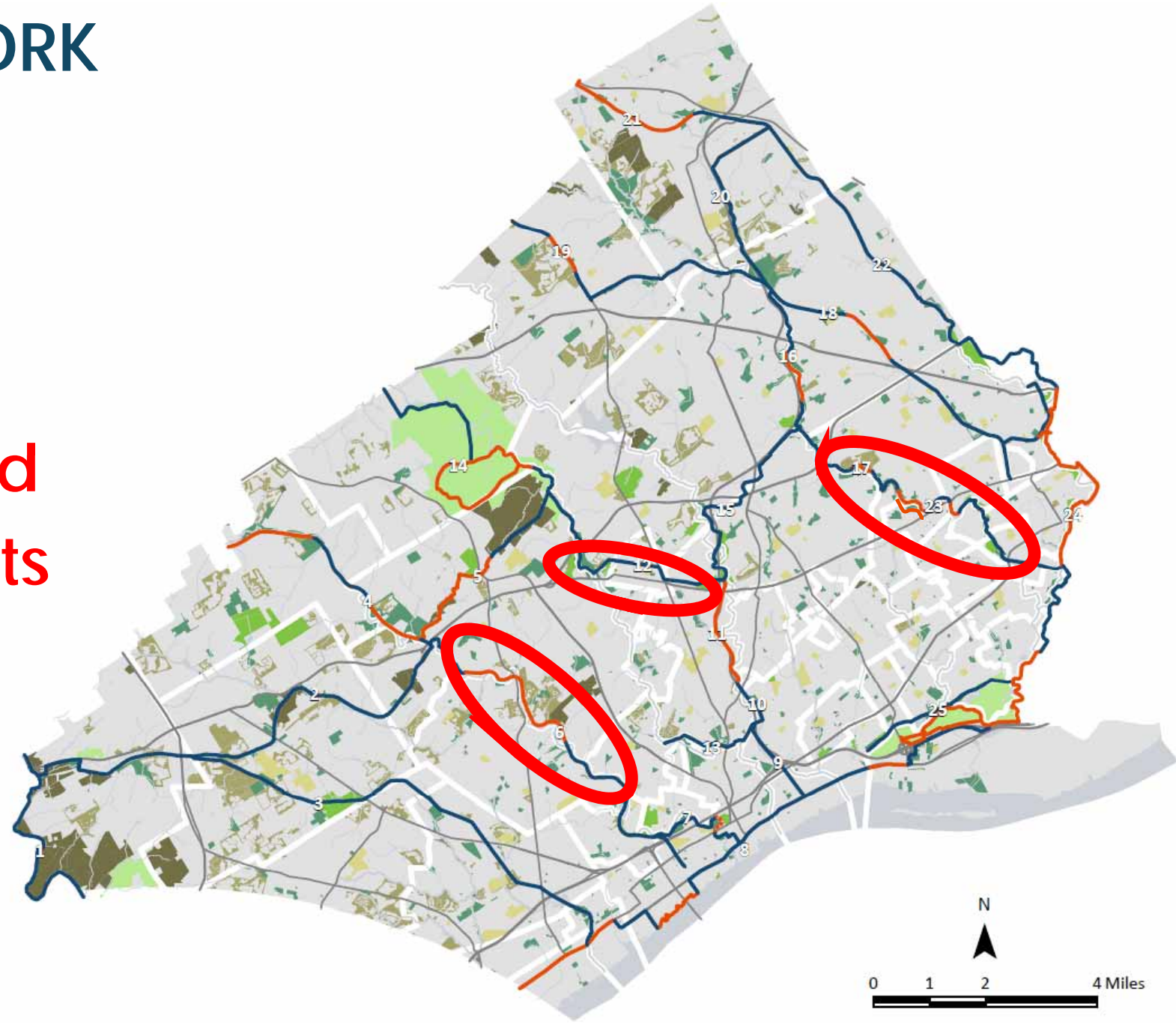
# DELAWARE COUNTY

## PRIMARY TRAIL NETWORK



### Current County-Led Trail Projects

- Chester Creek Trail
- Darby Creek Trail
- Media-Smedley Connector Trail



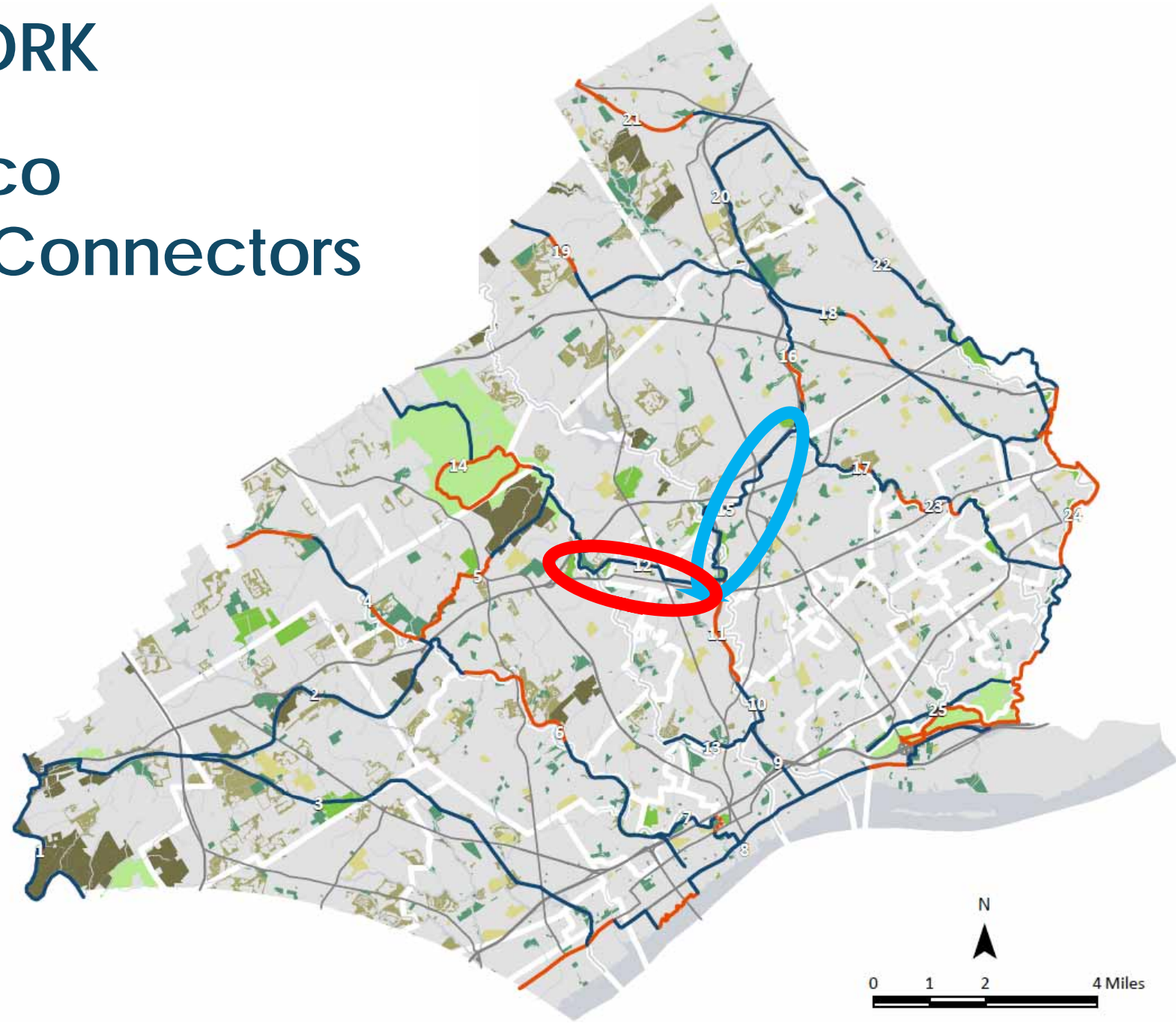
# DELAWARE COUNTY

## PRIMARY TRAIL NETWORK



### Central Delco East – West Connectors

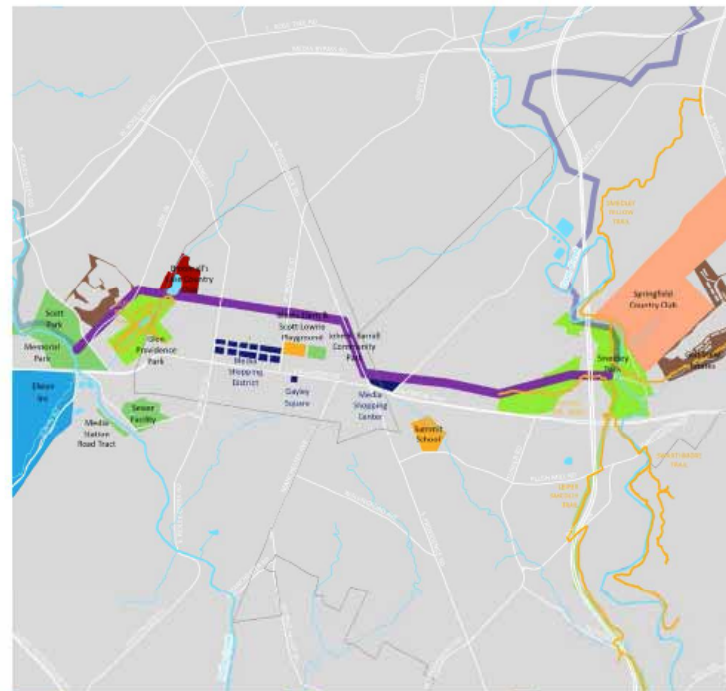
- **Blue Route Bikeway - Smedley to Darby Creek (Conceptual)**  
- Goal: Connect Crum Creek to Darby Creek. (Overlap w/ Springfield Trail)
- **Media-Smedley Connector Trail (Study Underway)**  
- Goal: Connect Ridley Creek to Crum Creek.



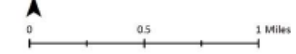
# MEDIA-SMEDLEY CONNECTOR TRAIL FEASIBILITY STUDY



Map 3-13: Media-Smedley Connector Trail



- 12 - Media-Smedley Connector Trail
- Federal Park
- Homeowner's Association Open Space
- 11 - Blue Route Bikeway - Leiper-Smedley Trail
- State Park
- Conservation Organization Protected Lands
- 13 - Ridley Creek Greenway (North & South Sections)
- County Owned Land
- Cemetery
- 15 - Blue Route Bikeway - Smedley to Darby Creek
- Municipal Owned Land
- Private and Public Golf Courses
- Existing Trails
- School District Open Space and Recreation
- Private Outdoor Recreational Facility
- Institutional Property w/ Open Space
- Indoor Recreation Facilities
- Shopping Centers



**12: MEDIA-SMEDLEY CONNECTOR TRAIL**

**DESCRIPTION**

The Media-Smedley Connector Trail provides the opportunity for an easy, safe, and legal route for bicyclists and pedestrians to travel from Media Borough east through Smedley County Park (Pine Ridge/Penza Tract entrance), and from the Borough west to Scott Park and the Mineral Hill Area. A multi-use trail within the west side of Smedley Park (Penza Tract) has been proposed in a long range plan by the County.

Media Borough's Comprehensive Plan (adopted in 2014) recommends a designated on-road east-west route through the Borough. Media and Nether Providence can work together on a study to connect the east end of this route to Smedley County Park. This should include coordination with stakeholders such as the owner of the Media Shopping Center, the Chesley Office Campus (Henderson Group), and other private landowners and residents.

The western terminus of the trail is in Scott Park in Middletown Township which was addressed as part of a group of parks along Ridley Creek in the *Mineral Hill Area Park Master Plan* (2014). In addition to Scott park, the study area is comprised of Mineral Hill County Park and Middletown Township's Memorial Park on the west side of the creek, and the Lavin Tract in Upper Providence on the east side of the creek. The plan calls for a trail network throughout the parks and makes recommendations for possible pedestrian connections beyond the site, including a safe route connecting to the Borough and the County's Glen Providence County Park which is situated in Media Borough and Upper Providence Township.

**Status:**  
Potential; Proposed

**Surface Type(s):**  
Paved; Undetermined

**Ownership:**  
Municipalities; Delaware County; Private Landowners

**Municipalities:**  
Media Borough  
Nether Providence Township  
Upper Providence Township

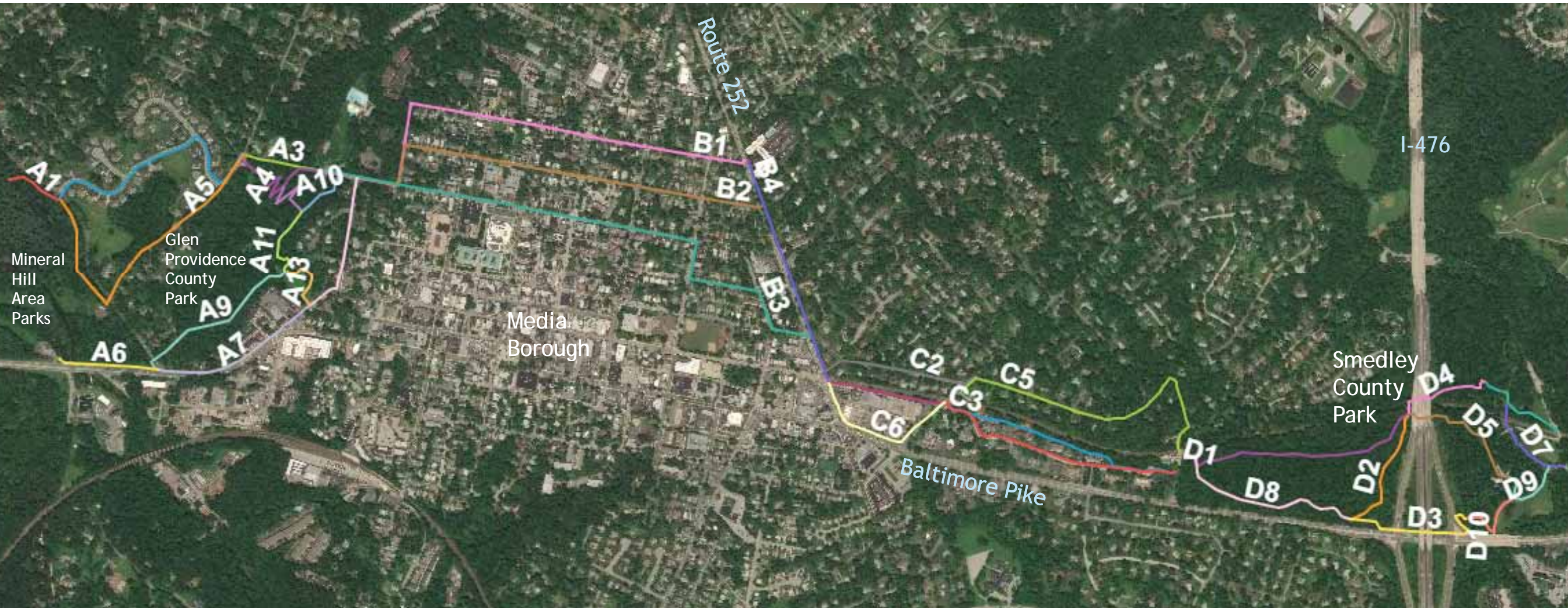
**Potential Links:**  
Middletown Township  
Springfield Township

**Primary Trail Connections:**  
11 - Blue Route Bikeway – Leiper Leiper-Smedley Trail  
13 - Ridley Creek Greenway (North)  
15 - Blue Route Bikeway – Smedley to Darby Creek

**Hub Connections:**  
Downtown Media  
Memorial Park  
Mineral Hill County Park  
Scott Park  
Smedley County Park

# MEDIA-SMEDLEY CONNECTOR TRAIL FEASIBILITY STUDY

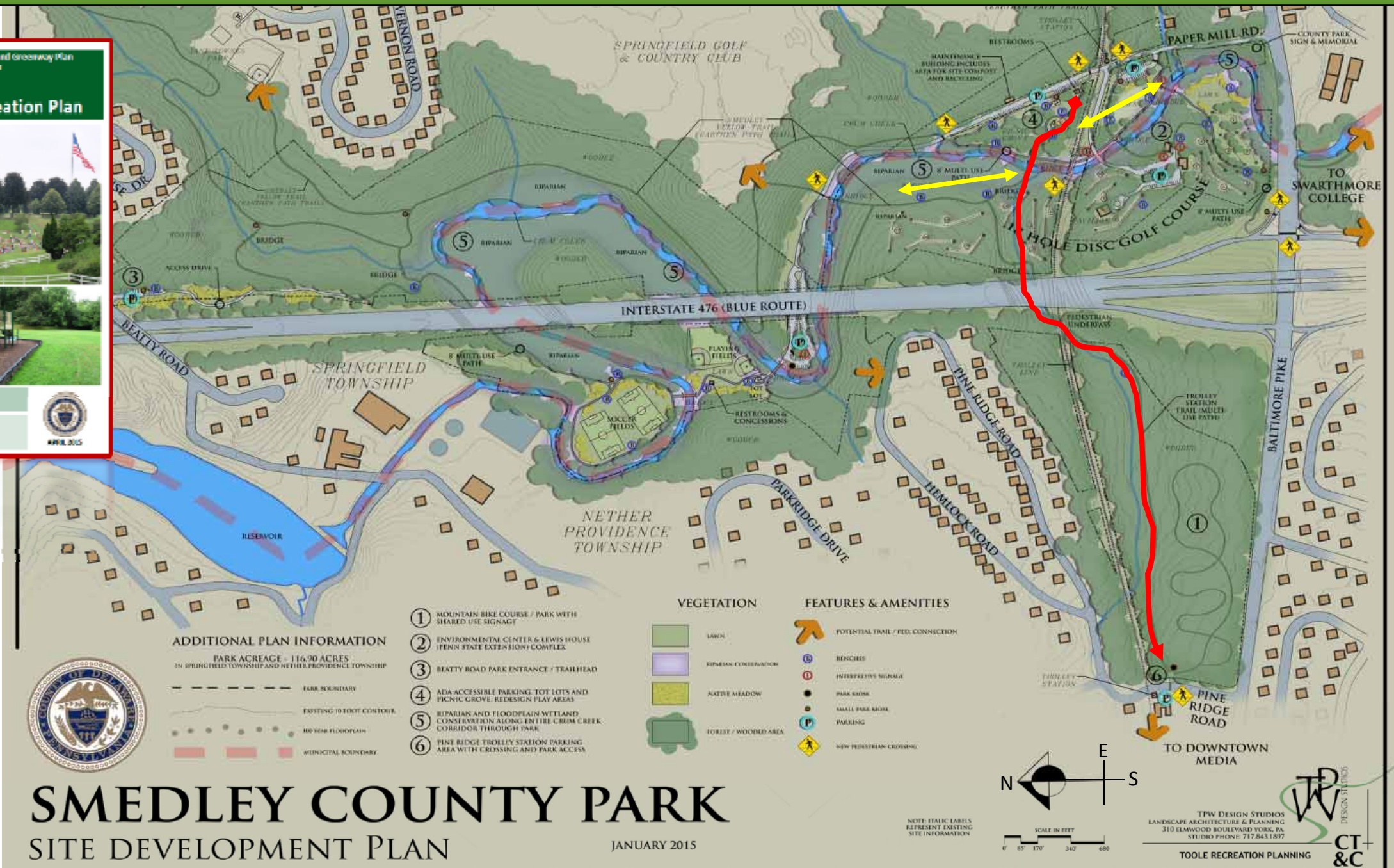
## Trail Segment Alternatives – as of January, 2020



# MEDIA-SMEDLEY CONNECTOR TRAIL FEASIBILITY STUDY

Delaware County Open Space, Recreation, and Greenway Plan  
 Volume III  
**County Parks and Recreation Plan**

APRIL 2015



## SMEDLEY COUNTY PARK SITE DEVELOPMENT PLAN

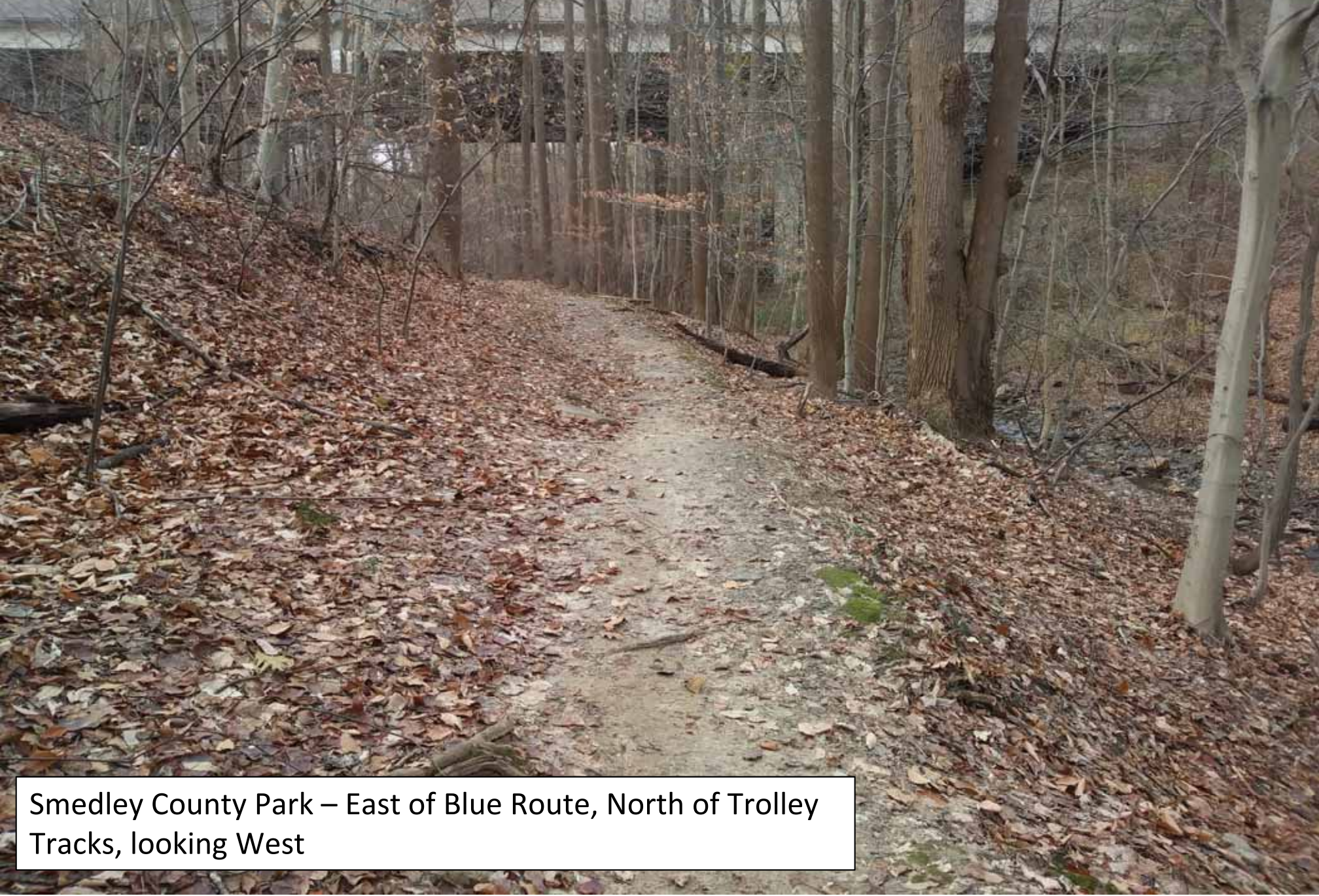
JANUARY 2015

# MEDIA-SMEDLEY CONNECTOR TRAIL FEASIBILITY STUDY



Smedley County Park – Near  
Trolley Tracks

# MEDIA-SMEDLEY CONNECTOR TRAIL FEASIBILITY STUDY



Smedley County Park – East of Blue Route, North of Trolley Tracks, looking West



# CHESTER CREEK TRAIL

## PRIMARY TRAIL NETWORK

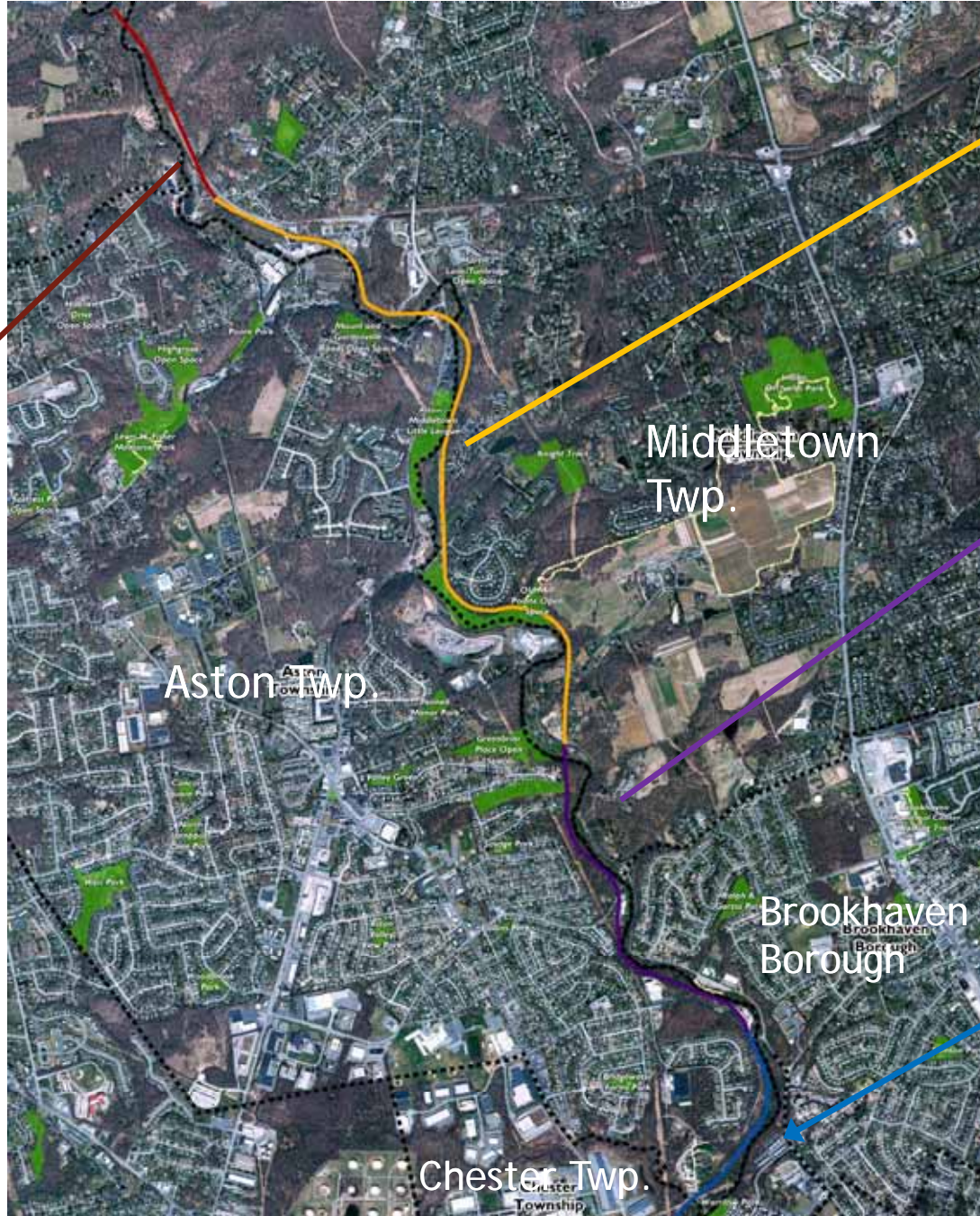


**THE  
CIRCUIT  
TRAILS**

100s OF MILES  
OF HAPPY



# CHESTER CREEK TRAIL – Phase 1



Phase 1 -  
Opened Spring,  
2017

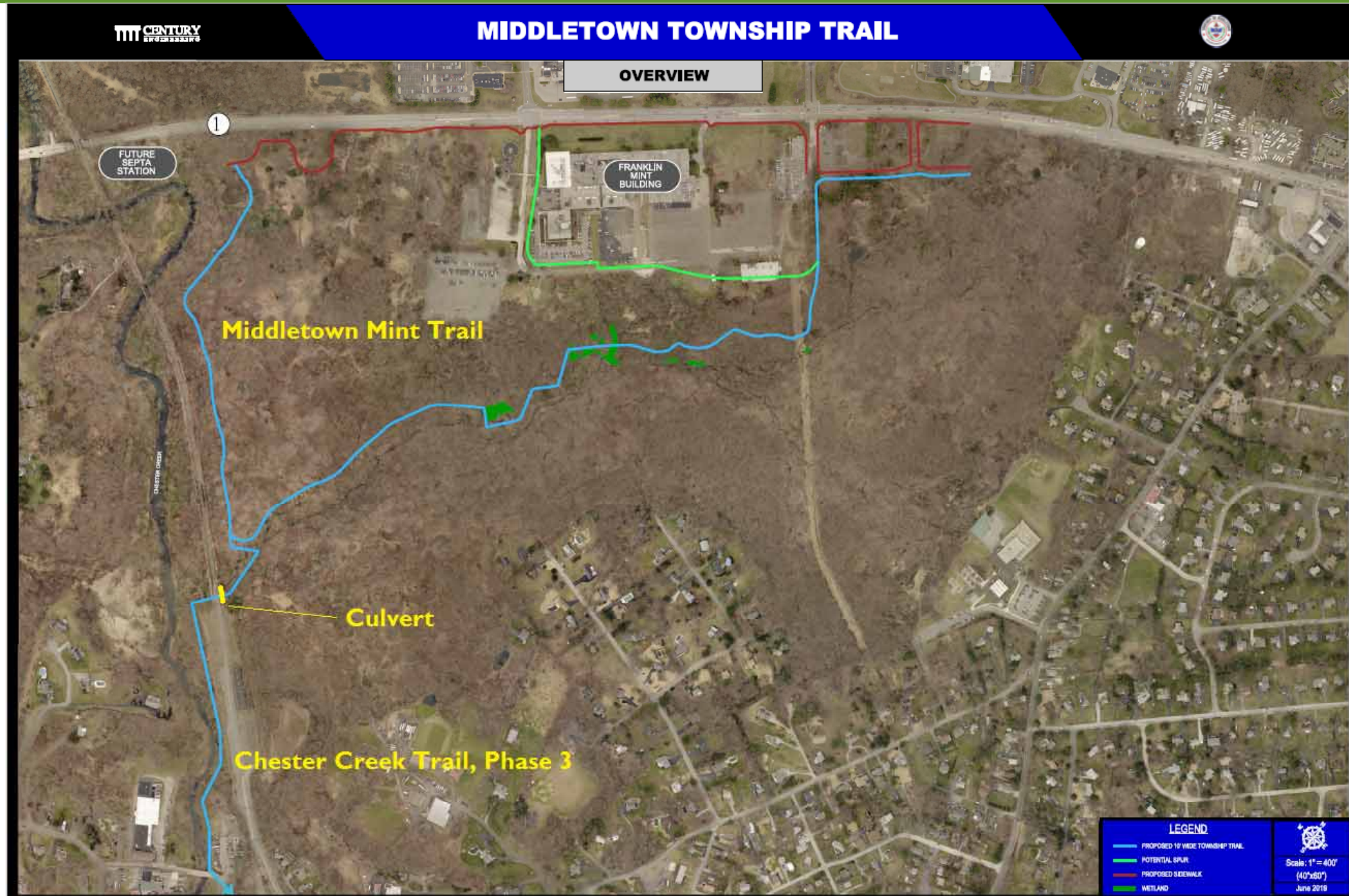
Phase 2 –  
In Design

Phases 4 & 5 -  
Future

Phase 3 –  
Middletown Twp.-  
led des./dev.,  
In Design



# MIDDLETOWN MINT TRAIL/CHESTER CREEK TRAIL, Ph. 3



# Chester Creek Trail – Phase 1



# Chester Creek Trail – Phase 2



# Chester Creek Trail – Phase 2



# DARBY CREEK STREAM VALLEY TRAIL



**THE  
CIRCUIT  
TRAILS**  
100s OF MILES  
OF HAPPY



# Darby Creek Trail – Phase 1

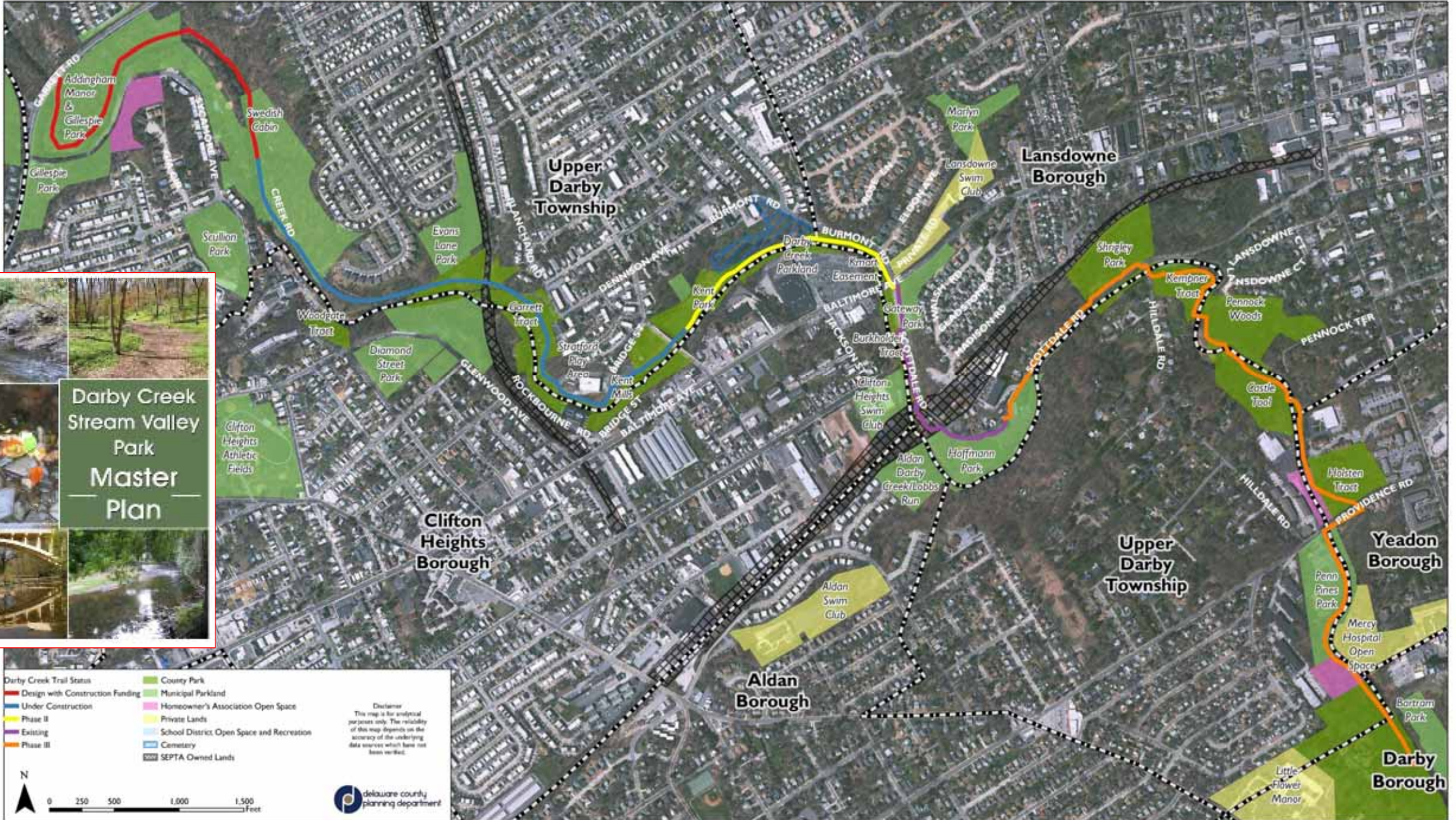




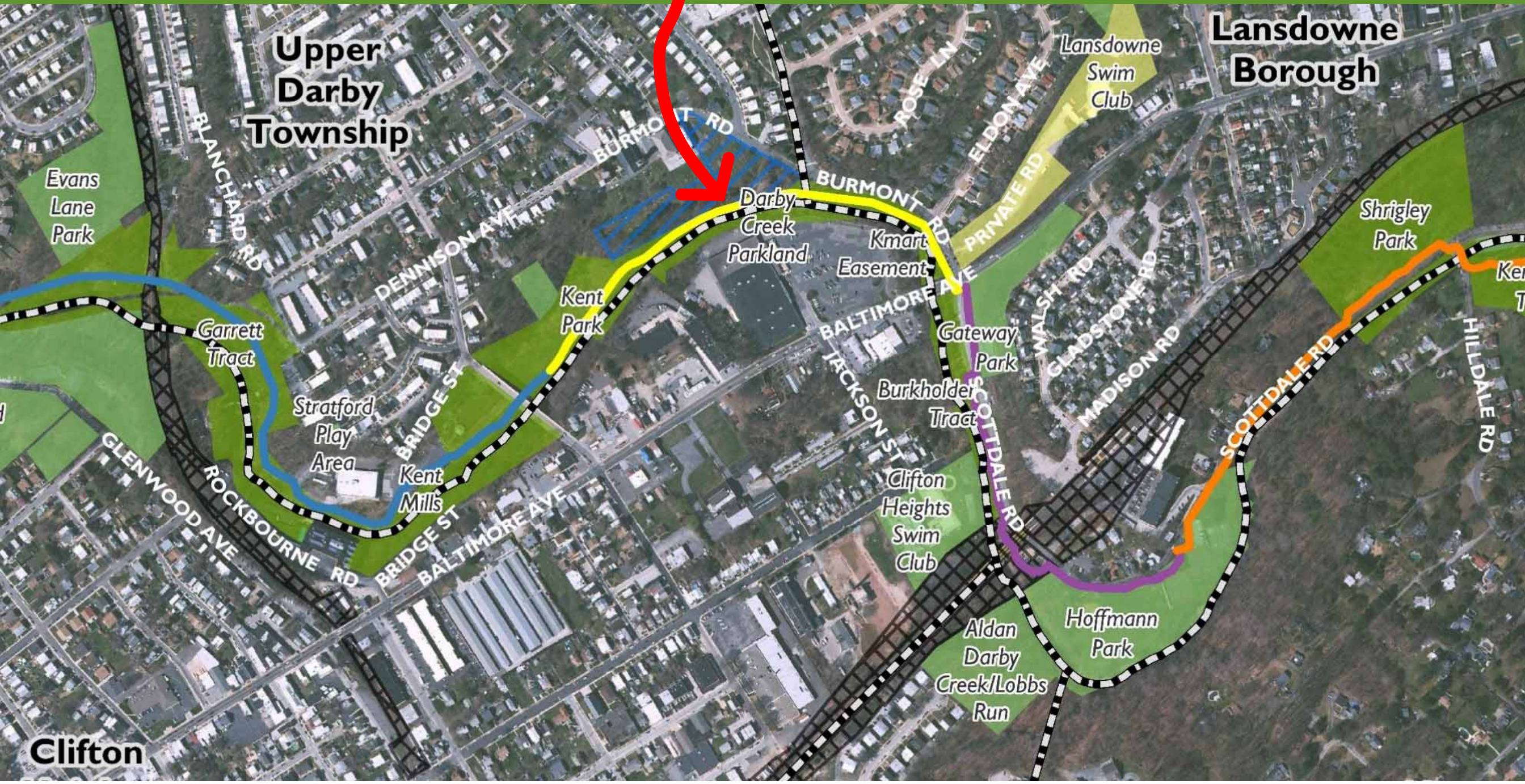
# Darby Creek Trail – Phase 1



# DARBY CREEK STREAM VALLEY TRAIL



# DARBY CREEK TRAIL – PHASE 2



# Darby Creek Trail – Phase 2





# On-Road Bike Network Planning & Coordination



# On-Road Bicycle and Pedestrian Network

## Delaware County Bicycle Network (Proposed Corridors)

### A County Role:

- PennDOT Road Restriping coordination
- Bike lane/complete streets awareness and coordination

### A Current Project:

- Route 320 Shoulder Re-striping - Chester, Nether Providence, Springfield...





# PennDOT Road Re-striping can result in Bicycle Facilities

PennDOT resurfacing of state roads includes outreach to municipalities to determine if townships, boroughs, and cities would like bicycle lanes, sharrows, or edge lines to improve bicycle safety and encourage more sustainable travel.

Municipalities must maintain the striping until the next resurfacing in order for PennDOT to install the striping when the road is resurfaced.

This photo is a recent PennDOT resurfacing on PA 320 northbound (Madison Street) in Chester City.



2020 Transportation Improv... x Planning Department - Delaw... x Delaware County's Transport... x Delaware County Planning D... x Delaware County Transportal... x +

delcopa.gov/planning/

Site Search  Go

Delaware County Pennsylvania

ELECTED OFFICIALS COURTS A TO Z PUBLIC ACCESS STAY INFORMED LIVE, WORK, & PLAY

## Planning Department

Home / Departments / Planning Department

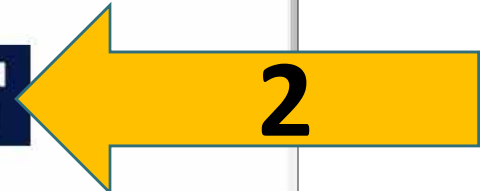
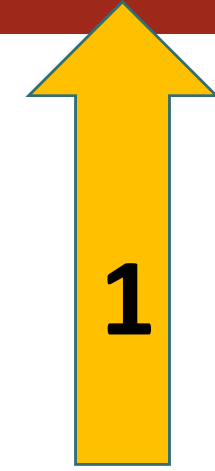
**New Interactive Transit Application for Delaware County**

### PLANNING DEPARTMENT NAVIGATION

**Mapping and Data Portal**

- > [About Planning](#)
- > [Calendar](#)
- > [Current Projects](#)
- > [Delaware County 2035](#)
- > [Demographic Data](#)
- > [Development Review](#)
- > [Forms](#)
- > [Funding](#)
- > [Mapping](#)
- > [Municipal Programs & Initiatives](#)
- > [Planning Education](#)

The Delaware County Planning Department's mission is to promote the sound development and redevelopment of the County through the application of contemporary planning principles and smart growth concepts, while maintaining and enhancing the cultural, economic, and environmental livability of the County. The future of Delaware County and our municipalities is critically important, and we hope to provide resources to support a bright future. Stay up to date with the latest planning news and funding opportunities in Delaware County by subscribing to our periodic email alerts [here](#).





Mapping and Data Portal

The mission of Delaware County Planning Department (DCPD) is to promote the sound development and redevelopment of the County through the application of contemporary planning principles and smart growth concepts, while maintaining and enhancing the cultural, economic, and environmental livability of the County.

Featured Maps and Applications

The future of Delaware County and our municipalities is critically important. These applications are part of the Planning Department's goal to provide resources to support a bright future.

Delaware County Municipal Zoning Application
Details zoning designations for the 49 municipalities within Delaware County.
Explore

Proposed Subdivision and Land Development
Information on subdivision and land developments reviewed by the County Planning Commission.
Explore

Delaware County's Transportation Services
View SEPTA's bus, trolley and regional rail routes and their corresponding stops and stations.
Explore

Transportation Improvements Inventory
The 2019 Inventory is a record of documented transportation needs within Delaware County.
Explore

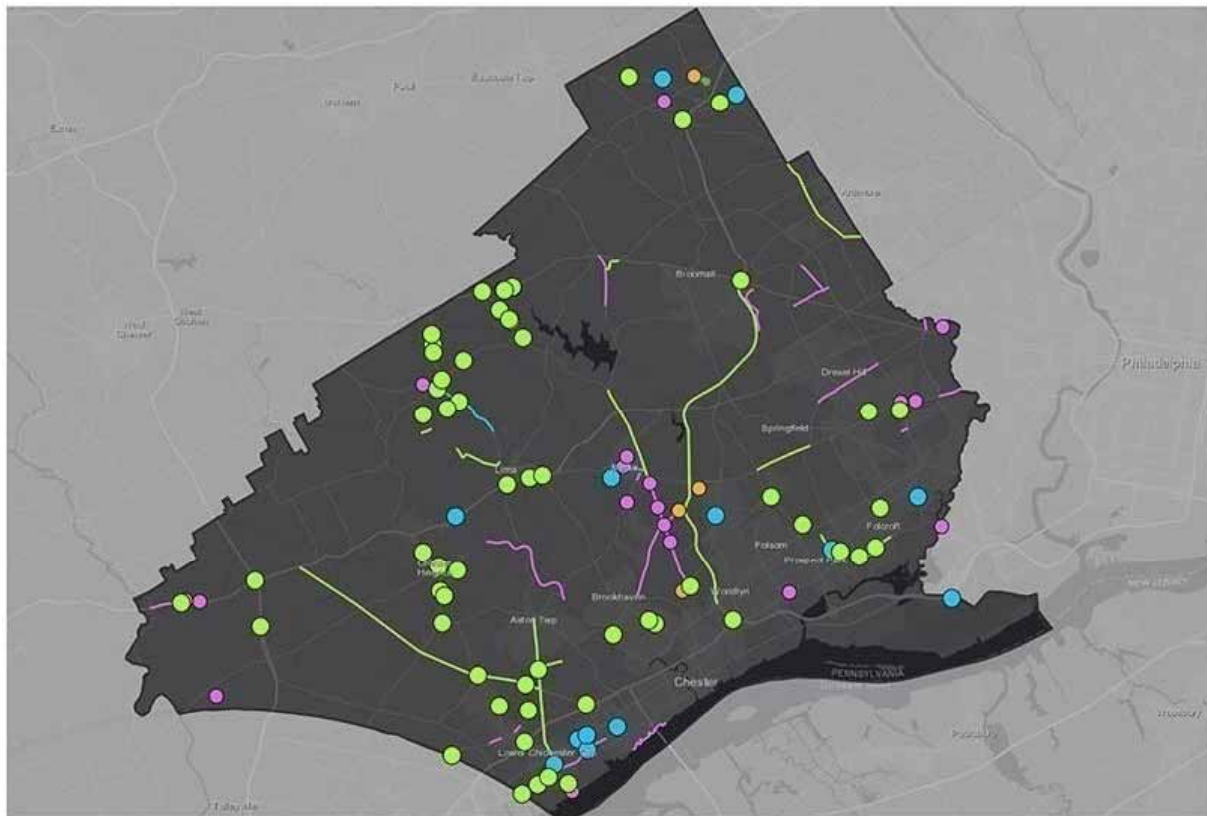


Transportation Improvements Inventory (TII)

# Transportation Improvements Inventory

Home / Departments / Planning Department / Municipal Programs & Initiatives / Transportation Improvements Inventory

[www.delcopa.gov/planning](http://www.delcopa.gov/planning)



## PLANNING DEPARTMENT NAVIGATION

### Mapping and Data Portal

- > About Planning
- > Calendar
- > Current Projects
- > Delaware County 2035
- > Demographic Data
- > Development Review
- > Forms
- > Funding
- > Mapping
- > Municipal Programs & Initiatives
- > Planning Education
- > Publications

Linda F. Hill, Director  
Planning Department

First Floor  
1055 E. Baltimore Pike

Interested in learning more about the Delaware County Transportation Improvements Inventory? Check out our [interactive map!](#) (Browsers other than Internet Explorer or Microsoft Edge are recommended for optimal performance.)

The 2019 Delaware County Transportation Improvements Inventory (TII) is a record of documented transportation needs within

Find address or place

+

-

Home

Layers

Full Screen

Layers

Info

Share

### Legend

**TII - Point Data**

- Bicycle/Pedestrian
- Bridges
- Public Transit
- Roads

**TII - Line Data**

- Bicycle/Pedestrian
- Public Transit
- Roads

**TII - Polygon Data**

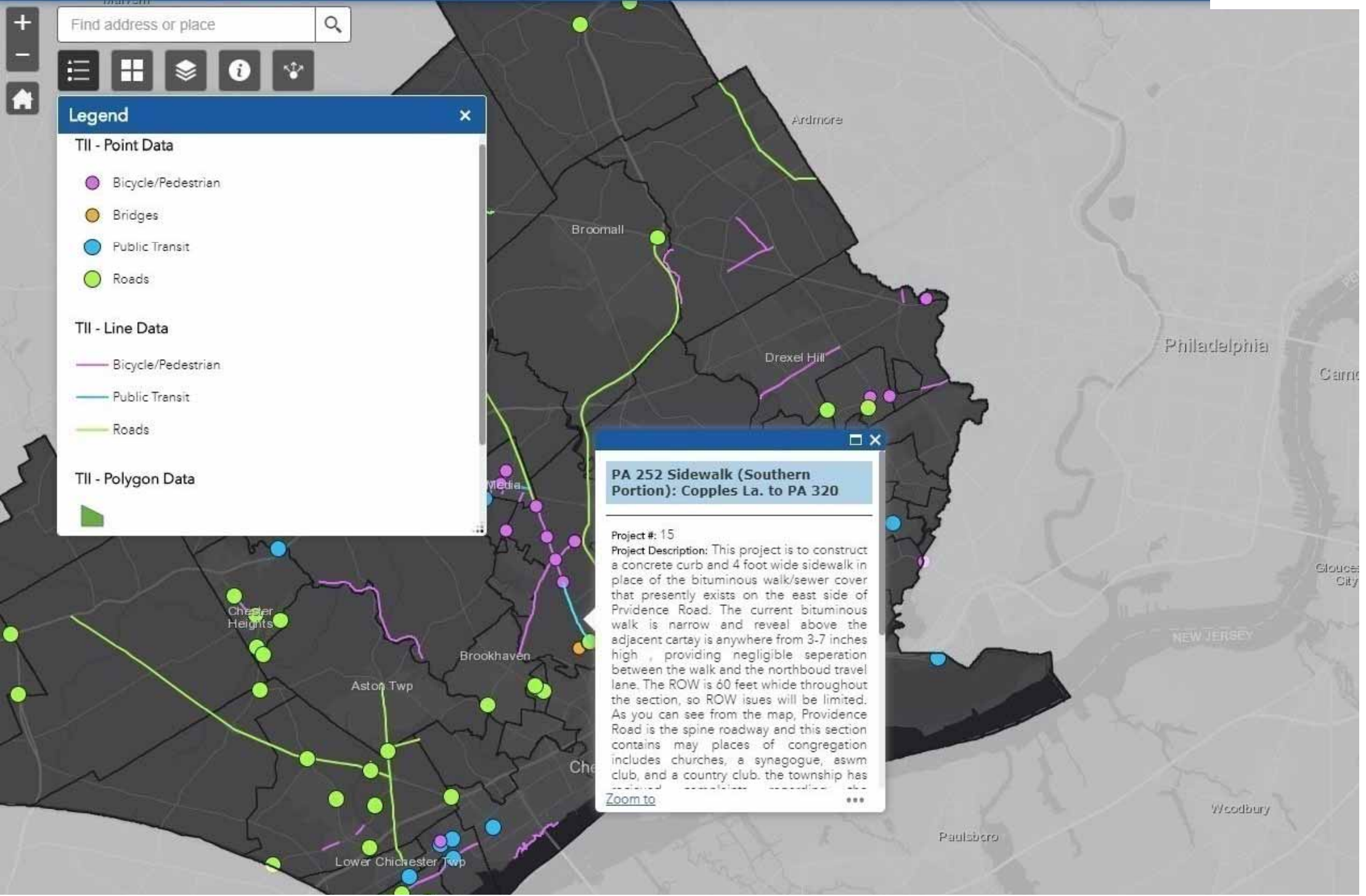
- 

### PA 252 Sidewalk (Southern Portion): Copples La. to PA 320

Project #: 15

**Project Description:** This project is to construct a concrete curb and 4 foot wide sidewalk in place of the bituminous walk/sewer cover that presently exists on the east side of Providence Road. The current bituminous walk is narrow and reveal above the adjacent cartay is anywhere from 3-7 inches high , providing negligible seperation between the walk and the northboud travel lane. The ROW is 60 feet wide throughout the section, so ROW issues will be limited. As you can see from the map, Providence Road is the spine roadway and this section contains may places of congregation includes churches, a synagogue, aswm club, and a country club. the township has

[Zoom to](#)



# Delaware County Transportation Improvements Inventory



Find address or place



### Legend

**TII - Point Data**

- Bicycle/Pedestrian
- Bridges
- Public Transit
- Roads

**TII - Line Data**

- Bicycle/Pedestrian
- Public Transit
- Roads

**TII - Polygon Data**

- 

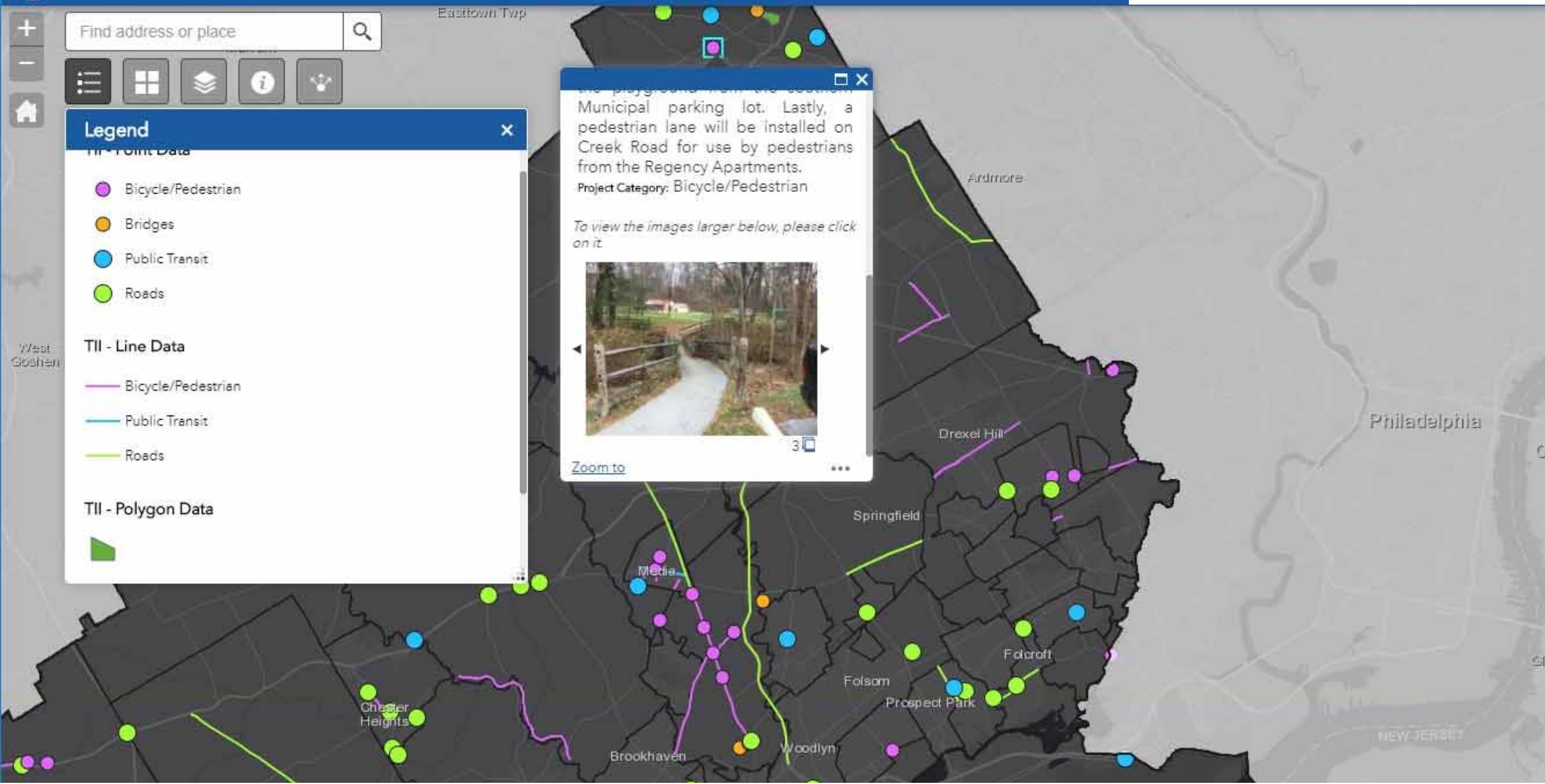
the playground from the eastern Municipal parking lot. Lastly, a pedestrian lane will be installed on Creek Road for use by pedestrians from the Regency Apartments.

**Project Category:** Bicycle/Pedestrian

*To view the images larger below, please click on it.*



[Zoom to](#) ...



# ADDITIONAL 2020 PROJECTS

## Open Space Task Force

- Re-form & Re-convene
- Discuss status and future of County Open Space Program.

## Interactive Trails Map for Delaware County

- Product will be an online public resource for locating open existing public trails countywide.

## 5-Year Open Space, Recreation, and Trails Mapping and Data Update

- Questionnaire to municipal officials and staff to fully update the County's maps and data.





made.

## CURRENT PROJECTS

- > Delaware County Open Space Program
- > Media-Smedley Connector Trail Feasibility Study
- > Newtown Township Zoning Task Force
- > Delaware County 2035 Housing Plan
- > West Chester Pike Coalition

[www.delcopa.gov/planning](http://www.delcopa.gov/planning)

First Floor

1055 E. Baltimore Pike

Media, PA 19063

Phone: 610-891-5200

Fax: 610-891-5203

Email:

[Planning\\_Department@co.delaware.pa.us](mailto:Planning_Department@co.delaware.pa.us)

**Mapping and  
Data Portal**

## FUNDING

**February 21, 2020 (Mandatory Meeting - January 14, 2020) - Transportation and Community Development Initiatives (TCDI)**

**March 2, 2020 - Keystone Historic Preservation Construction Grants**

**March 2, 2020 - Keystone Historic Preservation Planning Grants**

> Funding Assistance

> Grant Support Letter

Steven R. Beckley, AICP, , Open Space and Trails Manager  
Delaware County Planning Department  
[www.delcopa.gov/planning](http://www.delcopa.gov/planning)