

# Circuit Trails Pipeline Manager Tool



## CIRCUIT TRAILS PIPELINE MANAGER

Welcome to the Circuit Trails Pipeline Manager! The purpose of this tool is to facilitate coordination between the many different organizations that are implementing trail projects that will contribute to the Circuit Trails network.

To get started using the tool, you will first need to create an account by clicking the "Sign Up" button. Once you have completed the signup, your credentials will be reviewed. You will be notified by email when they have been verified and then you will be able to log in to the tool.

Please direct all comments, feedback, and questions to Frank Maguire, Trails & Recreation Program Manager at the Pennsylvania Environmental Council ([fmaguire@pecpa.org](mailto:fmaguire@pecpa.org)).

USERNAME:

PASSWORD:

LOGIN

SIGN UP

# Reaching 500 Miles by 2025



# Circuit Trails Coalition

## Strategic Plan 2019-2021

- **Goal #1 – Advocate for Priority Trails to Ensure 500 Circuit miles completed by 2025**
- Use the pipeline tool to prioritize a select number “pipeline” segments that need targeted advocacy.

# Grouping Trail Segments by Status

“Planned”

“Pipeline”

“In  
Progress”

### Segment Profile

### Organizations

### Files

### Action Items

**Segment ID** 142 **DCNR Gap #**

**State** PA **County** Bucks

**Segment Name** Bensalem - Biddle Ln to Station Ave

**Trail Length** 0.68 *Mile(s)* **Length** 3,614.27 *Feet*

**Primary Trail Name** ECG

**Secondary Trail Name** Bucks ECG

**Status** Pipeline **Trunkline** Yes

**Right of Way Control**  Obtained  In-Progress  Unobtained

**Project Phase**

- Notion / Idea Developed
- Concept Plan Completed
- Schematic Plan Completed
- Preliminary Engineering Underway
- Preliminary Engineering Completed
- Final Engineering Underway
- Final Engineering Completed
- Awaiting Construction Funding
- Construction Funding Obtained

**Right of Way Concerns**

- Railroad
- Road
- Other

**Planning Concerns**

- Legal
- Funding
- Infrastructure
- Environmental
- Politics
- No Sponsor

**Environmental Concerns**

- Phase II Site
- Adjacent to Open Waterway(s)
- Subject to Flooding / Inundation
- Invasive Species Infestation
- State Environmental Agency Clearance Required

**Development Concerns**

- Bidding Issues
- Federal Requirements
- Poor Working Conditions
- Poor Soils
- Railroad Approval Required
- State Transportation Agency Approval Required

[Modify Segment Details](#)



### Segment Description

From Bensalem Greenway Master Plan for Segments 10-11: the trail will occupy County properties on either side of the street, with a marked crossing at Gravel Pike.

Once funding for final design has been secured for this section, the County, Township, and stakeholders will coordinate necessary ecological enhancements and the degree of public access allowed for these sites.

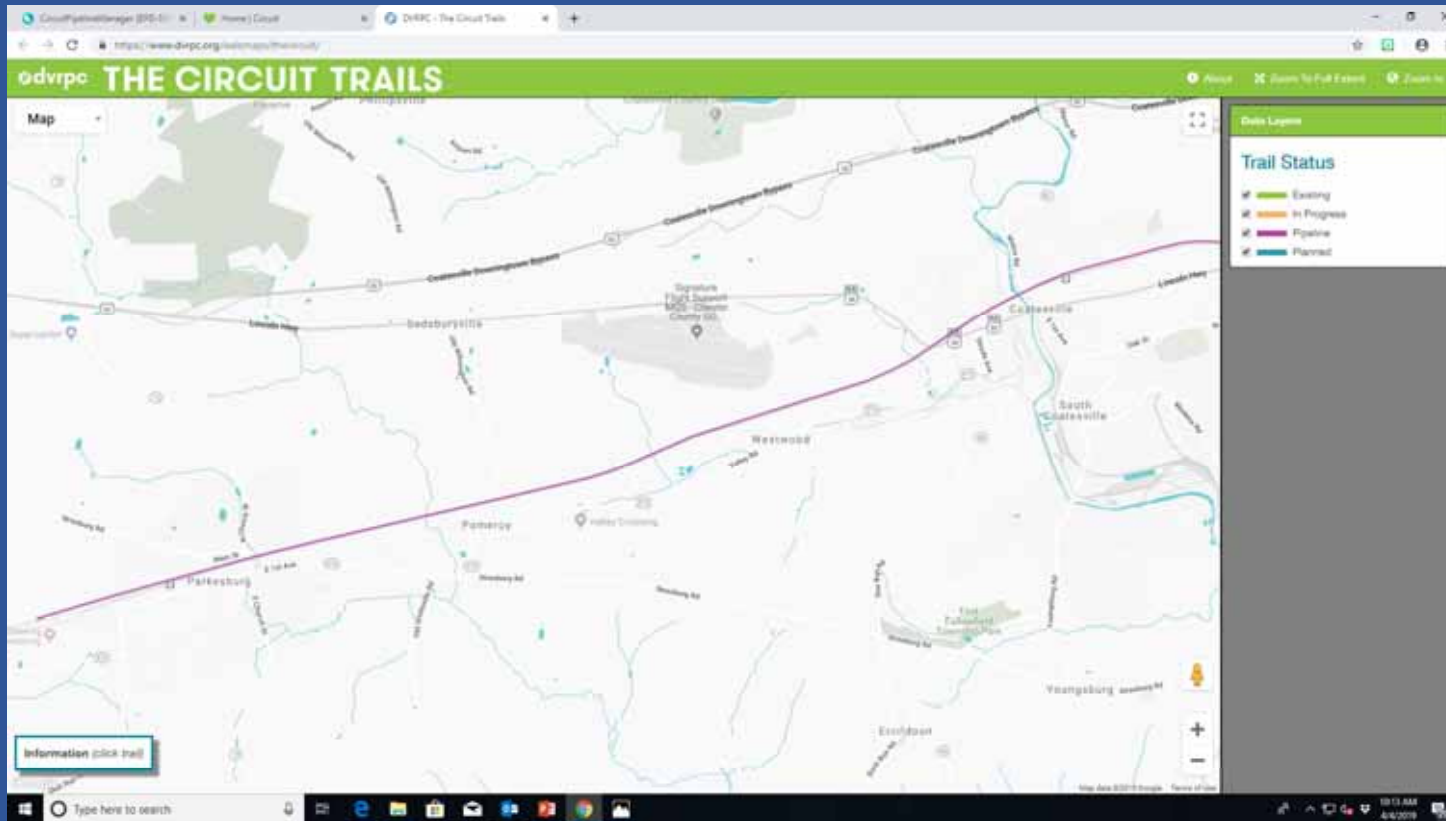
### Other Comments

Includes the following segments per the Bensalem Greenway Master Plan (2012):

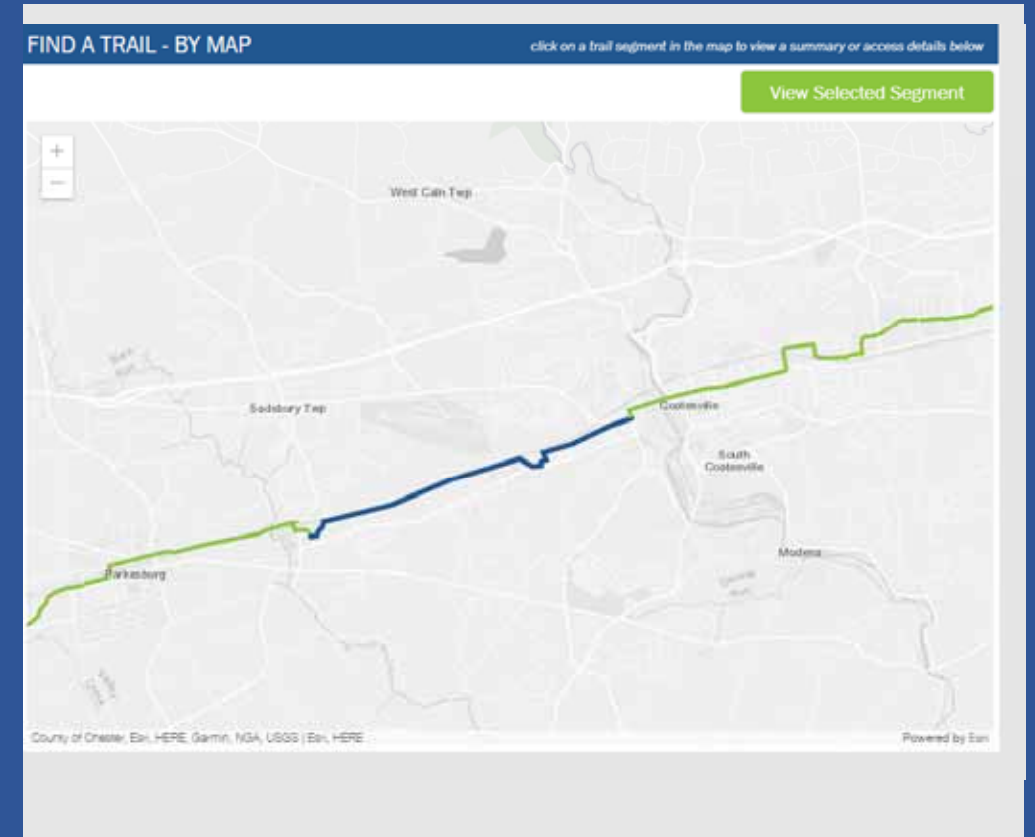
- Segment 10: Station Ave. to Gravel Pike (Pen Ryn)
- Segment 11: Gravel Pike to Biddle Lane



# Dividing Trail Segments in Chester County, PA



Proposed Chester Valley Trail extension



Proposed Chester Valley Trail extension  
(newly segmented in Pipeline Manager Tool)

## Examples of Segment Changes Made During County Meetings

- On Delaware County, PA's **Chester Creek Trail** change the "Deshong Park to Kerlin Street" segment from *pipeline* to *in progress*.
- Along Bucks County, PA's **Neshaminy Creek Trail** merge two segments together into one.

# Summary of Segment Status Changes Identified at County Meetings

**“PLANNED” SEGMENTS**      **-3.28 miles**

**“PIPELINE” SEGMENTS**      **+10.53 miles**

**“IN PROGRESS” SEGMENTS**      **-11.21 miles**

**EXISTING SEGMENTS**      **+3.96 miles**

*Information gathered during recent meetings with stakeholders in the City of Philadelphia and the following counties: Bucks County, PA; Montgomery County, PA; Delaware County, PA; Chester County, PA; Camden County, NJ and Gloucester County, NJ.*



# BECOME A PIPELINE TOOL USER

- Visit [www.circuitpipeline.org](http://www.circuitpipeline.org) and click “sign up”.
- For any questions, e-mail me at [ndorfman@pecpa.org](mailto:ndorfman@pecpa.org).