



Philly Western Suburbs

Trails Summit: February 1, 2020

Moving From  
“Cost Per Mile” to  
“Maximum Community  
Benefit”

How to Refocus on Making  
High-Quality Active  
Transportation Networks in PA



Leonard Bonarek  
*Regional Planner*



# People Want To Bike More

**BIKE TO WORK + WHEREVER!**

**"BEING ABLE TO GET ON A BIKE AND GO ANYWHERE IS REAL FREEDOM"**

**- KATRINA**

**BICYCLECOALITON.ORG**  
**TAKE THE PLEDGE TO RIDE!**

**BICYCLE COALITION OF GREATER PHILADELPHIA**



# People Want To Bike More





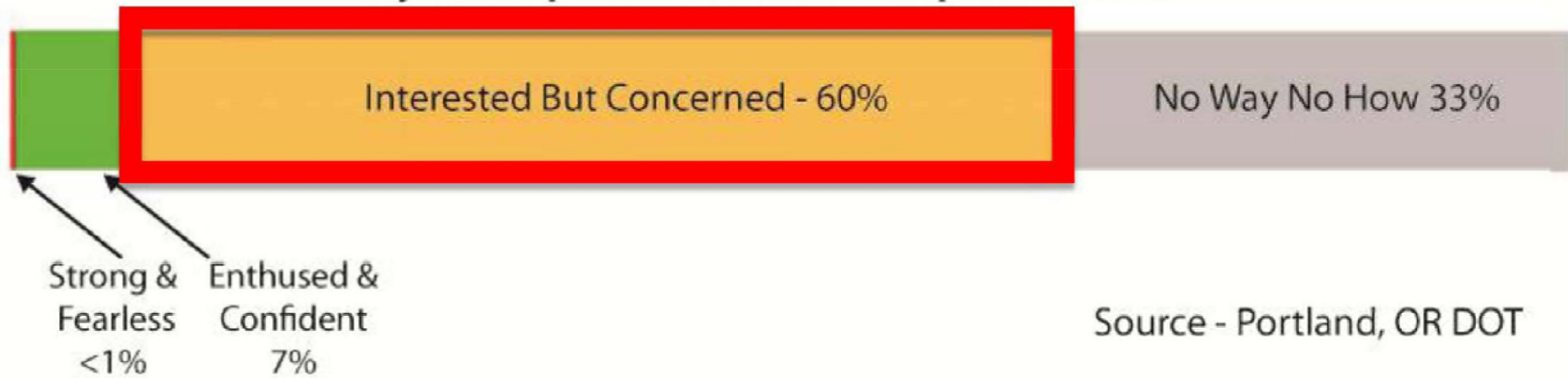
# People Want To Bike More





# People Want To Bike More

## Four Types of Cyclists By Proportion of Population





# Connecting People



**PA Secretary of Transportation** @PennDOTSec · Dec 4

My time as Secretary of Transportation is coming to a close. Today is my last official day. And as I reflect on my time here, I am overwhelmed with gratitude. Over the last 5 years, I've had the honor of meeting and talking with so many PennDOT employees across the state. (1/5)



13

10

146



**PA Secretary of Transportation**

@PennDOTSec

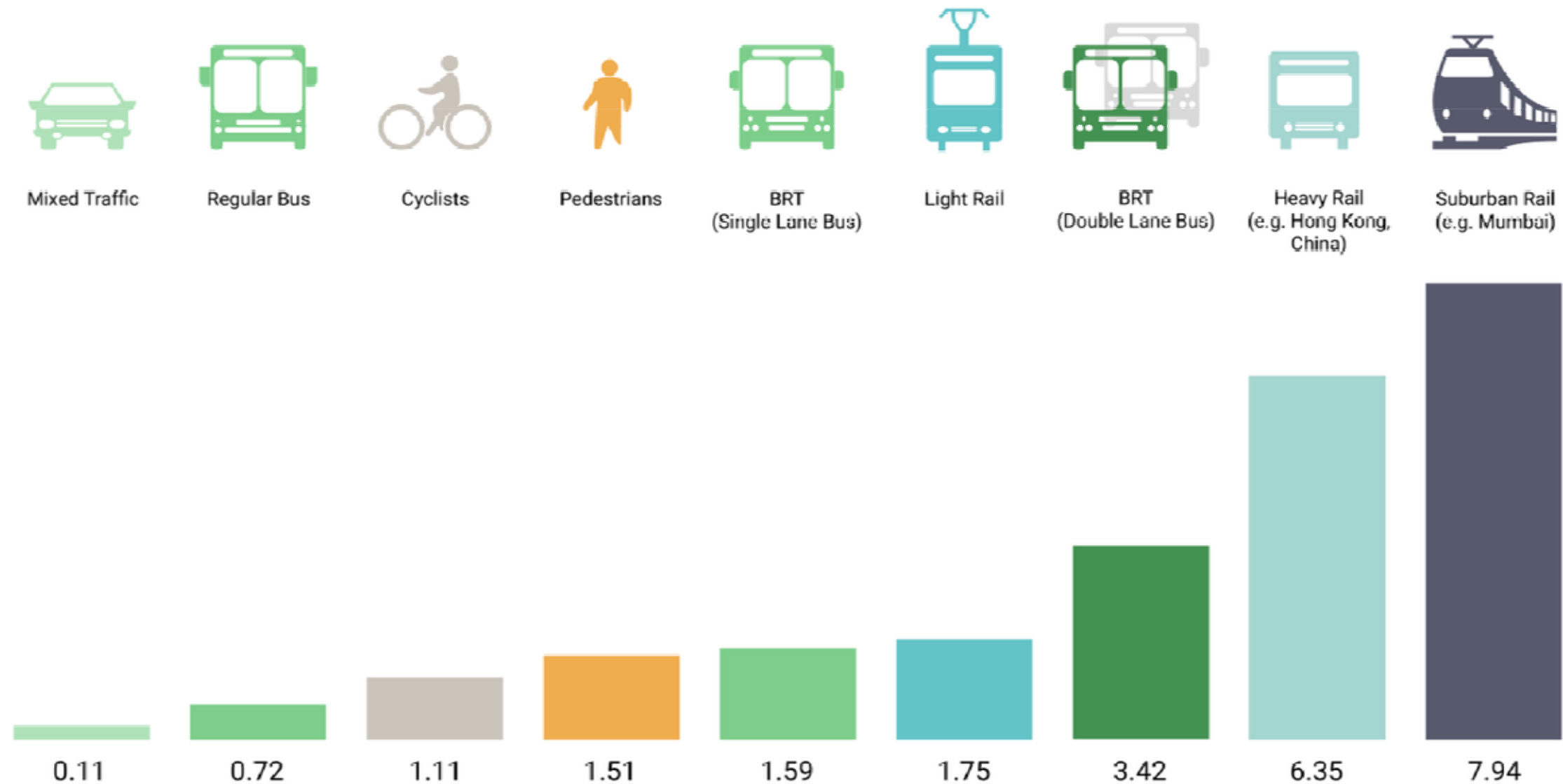
At its core, our work is about improving lives and connecting people. Each and every one of our employees is part of that story, and I'm so grateful that I had the opportunity to be part of it as well. (3/5)

12:47 PM · Dec 4, 2019 · [Twitter Web App](#)



# Connecting People

## CORRIDOR CAPACITY FOR DIFFERENT MEANS OF TRANSPORT IN pax/(s.m)



Corridor capacity in the SI units. *s* = second; *m* = meters. That is, the maximum number of passengers which can cross on average per second and per meter of the way's width.  
BRT = bus rapid transit; Sources: H. Botma and H. Papendrecht. 1991. Traffic Operation of Bicycle Traffic. In Transportation Research Record 1320. TRB.  
Washington, D. C.: National Research Council, and based on GTZ calculations (2009).



# 47 Years of Advocacy in 9 Counties

- Over 230 miles of bike lanes in Philadelphia
- The Schuylkill River Trail, whose success inspired the 800-mile Circuit Trails
- Car-free weekends on MLK Drive in early 1990s
- Philly's Complete Streets Policy & Office
- Education of 100,000 elementary students receiving safe bicycling & walking curriculum
- Premier High School Cycling Development Program
- Revision of "BOP" = 18% increase in suburban bike lanes in 2019
- PA Speed Camera Bill





# Regional Projects

- The Circuit Trails
- Improving Low-Stress Connectivity
- Bike lanes
  - Via PennDOT 5-year paving plan
  - Consulting with municipalities
- Technical Assistance Program
- Data/Geospatial analysis



# BIKE-FRIENDLY RESURFACING PROGRAM

Progress to date

Sarah Moran & Jesse Buerk  
Delaware Valley Regional Planning Commission

# Successes so far (2018/2019)

County	Road Name	Municipalities	Facility Type	Mileage
Bucks	Main St (SR 152)	Chalfont Borough	Sharrows	0.9 miles
Montgomery	Limekiln Pike (SR 152)	Horsham Township	Bike lanes/sharrows	1.1 miles
Bucks	Second Street Pike (SR 232)	Upper Southampton	Buffered bike lanes	1.2 miles
Delaware	Madison St / Chester Rd/ Providence Ave (SR 320)	Swarthmore, Chester City, Springfield	Bike lanes /sharrows / signage	4.5 miles
Delaware	Darby Road (SR 2005)	Haverford, Lansdowne, Darby	Striped shoulders	1.5 miles
Montgomery	Montgomery Ave / Jacksonville Rd (SR 322)	Hatboro	Bike lanes (along Jacksonville)	0.5 miles



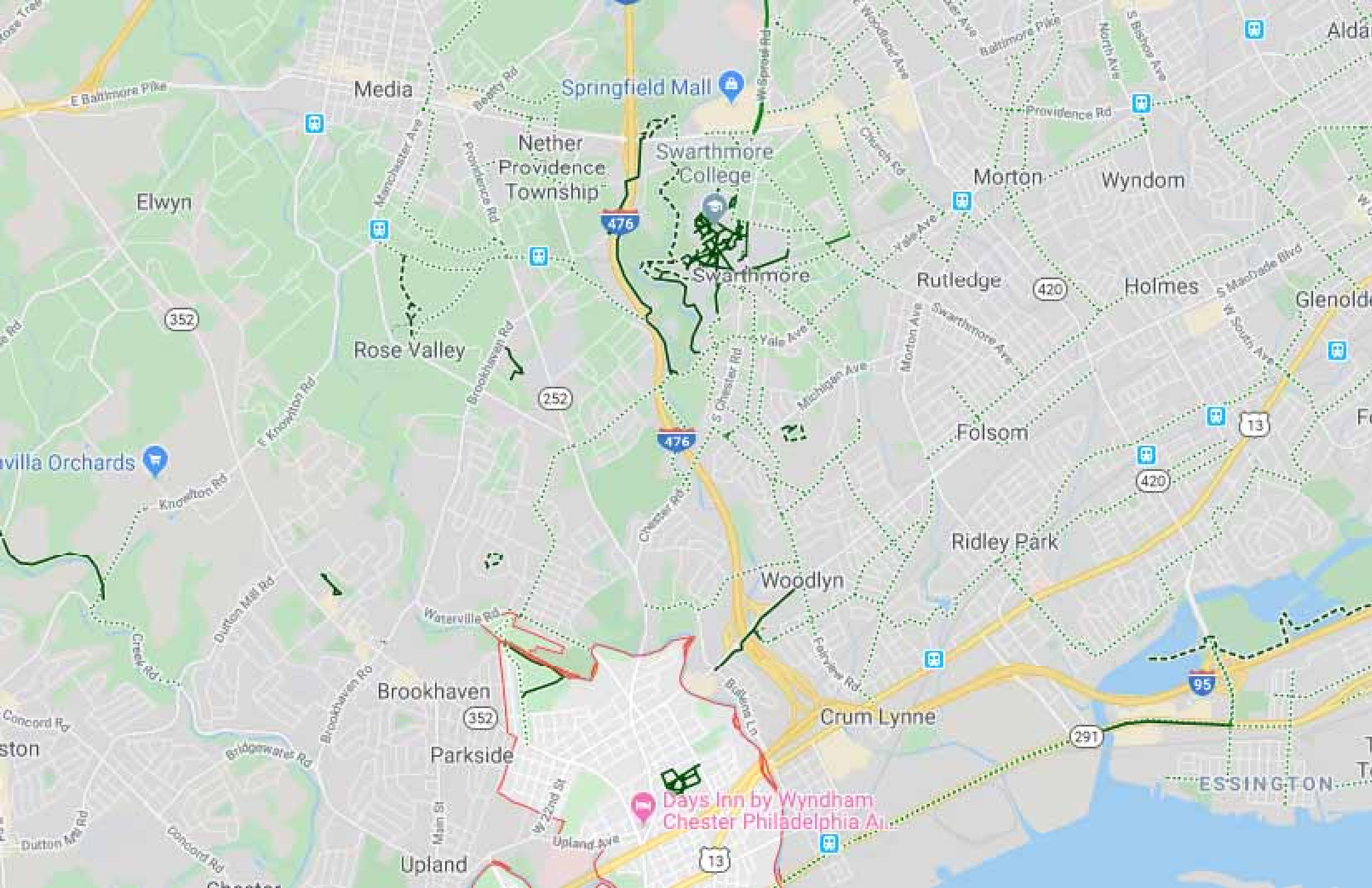
**BCGP Biking The Region**

@BikingTheRegion



**Brand spanking new Darby Rd bike-friendly facility brought to Haverford Township for free courtesy of the PennDOT paving plan. It works.**





Media

Springfield Mall

Nether Providence Township

Swarthmore College

Swarthmore

Morton

Wyndom

Elwyn

Rutledge

Holmes

Rose Valley

252

476

Folsom

420

Orchards

Ridley Park

Woodlyn

Brookhaven

352

Crum Lynne

Parkside

Days Inn by Wyndham Chester Philadelphia Area

Upland

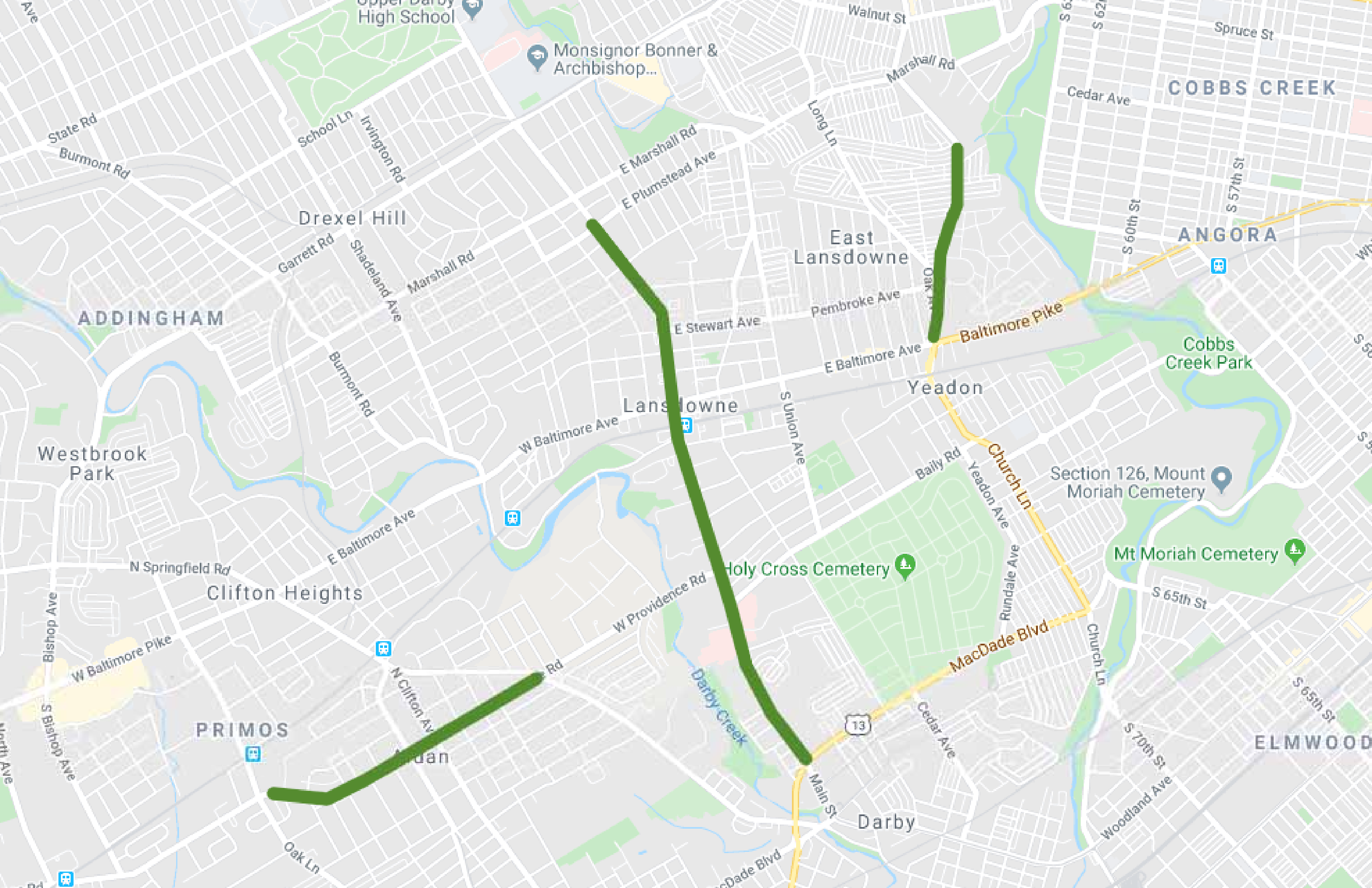
13

ESSINGTON

# 2020 Status – Request Letter

## Pending/Received

County	Road Name	Municipalities
Bucks	Hulmeville Road (SR 513) <i>Pushed from 2019</i>	Penndel, <b>Hulmeville</b> , <b>Middletown</b>
Chester	Kennett Pike (SR 0052)	<b>Pennsbury</b> , <b>Kennett</b> , East Marlborough
Delaware	Church Lane (SR 2001)	East Lansdowne, <b>Upper Darby</b>
Delaware	Lansdowne Ave (SR 2005)	<i>Yeadon</i> , <b>Lansdowne</b> , Darby
Delaware	Providence Road (SR 2010)	Aldan, <b>Upper Darby</b>
Montgomery	Belvior Road (SR 3017)	<b>East Norriton</b> , Plymouth Township, <b>Norristown</b>
Montgomery	Fitzwatertown Road (2038) <i>Pushed from 2019</i>	Upper Moreland, <b>Upper Dublin</b> , <i>Abington</i>
Montgomery	Morris Road (SR 2001)	<b>Worcester</b> , <b>Whitpain</b> , <b>Upper Gwynedd</b>
Montgomery	Ford Street (SR 3055)	Bridgeport



Upper Darby High School

Monsignor Bonner & Archbishop...

COBBS CREEK

ANGORA

ADDINGHAM

Drexel Hill

East Lansdowne

Westbrook Park

Lansdowne

Yeadon

Cobbs Creek Park

Section 126, Mount Moriah Cemetery

Holy Cross Cemetery

Mt Moriah Cemetery

Clifton Heights

PRIMOS

ELMWOOD

Darby



# Analysis Projects

## **Circuit Trails Pipeline Community Impact Analysis: 2018**

Analysis of upcoming trail projects:

- Length: shorter segments are easier
- Population density: people closer to the trail
- Equity: DVRPC “Indicators of Potential Disadvantage”
- Connectivity: segments connected to long trails get a bonus
- Weighting: balanced to emphasize segments than can benefit the most people





# Trails Community Impact

1	Section 2 - Kensington Ave to Castor Ave	Tookany-Tacony-Frankford	Philadelphia	11.56
2	Market Street to City Line Ave	Forge to Refuge	Philadelphia	10.99
3	N 36th St to Euclid Ave - Merchantville Path	Merchantville Trail	Camden	10.24
4	Delaware Ave to Pennsylvania Ave - Spring Garden St. Greenway	ECG	Philadelphia	10.11
5	Chester Valley Trail West - P&T Line to Enola LG	Chester Valley Trail	Chester	10.06
6	City Line Ave to Eagle/Wynnewood Rd	Forge to Refuge	Delaware	9.44
7	Pub Connector	Cooper River Trail	Camden	9.42
8	Parkside & 53rd St to City Line Ave	Parkside Cynwyd Trail	Philadelphia	9.17
9	Cobbs Creek Connector - Segment B, Phase I	ECG	Philadelphia	9.03
10	Wissahickon Gateway	Schuylkill River Trail	Philadelphia	8.98



# Trails Community Impact

1	Section 2 - Kensington Ave to Castor Ave	Tookany-Tacony-Frankford	Philadelphia	11.56
2	Market Street to City Line Ave	Forge to Refuge	Philadelphia	10.99
3	N 36th St to Euclid Ave - Merchantville Path	Merchantville Trail	Camden	10.24
4	Delaware Ave to Pennsylvania Ave - Spring Garden St. Greenway	ECG	Philadelphia	10.11
5	Chester Valley Trail West - P&T Line to Enola LG	Chester Valley Trail	Chester	10.06
6	City Line Ave to Eagle/Wynnewood Rd	Forge to Refuge	Delaware	9.44
7	Pub Connector	Cooper River Trail	Camden	9.42
8	Parkside & 53rd St to City Line Ave	Parkside Cynwyd Trail	Philadelphia	9.17
9	Cobbs Creek Connector - Segment B, Phase I	ECG	Philadelphia	9.03
10	Wissahickon Gateway	Schuylkill River Trail	Philadelphia	8.98





# Community Impact: Frankford Creek Trail: #1





# Community Impact Merchantville Trail: #3





# Regional Connectivity Analysis

## Analysis of roads & local/county trails in SEPA:

- Level-of-Traffic Stress: DVRPC
- Indicators of Potential Disadvantage: DVRPC
- Transit: SEPTA
- Trail Access: DVRPC
- Population data: US Census
- Environmental: EPA
- Health: RTI International



# Level of Traffic Stress

LTS 1:





# Level of Traffic Stress

LTS 2:







# Level of Traffic Stress

LTS 3:





# Level of Traffic Stress

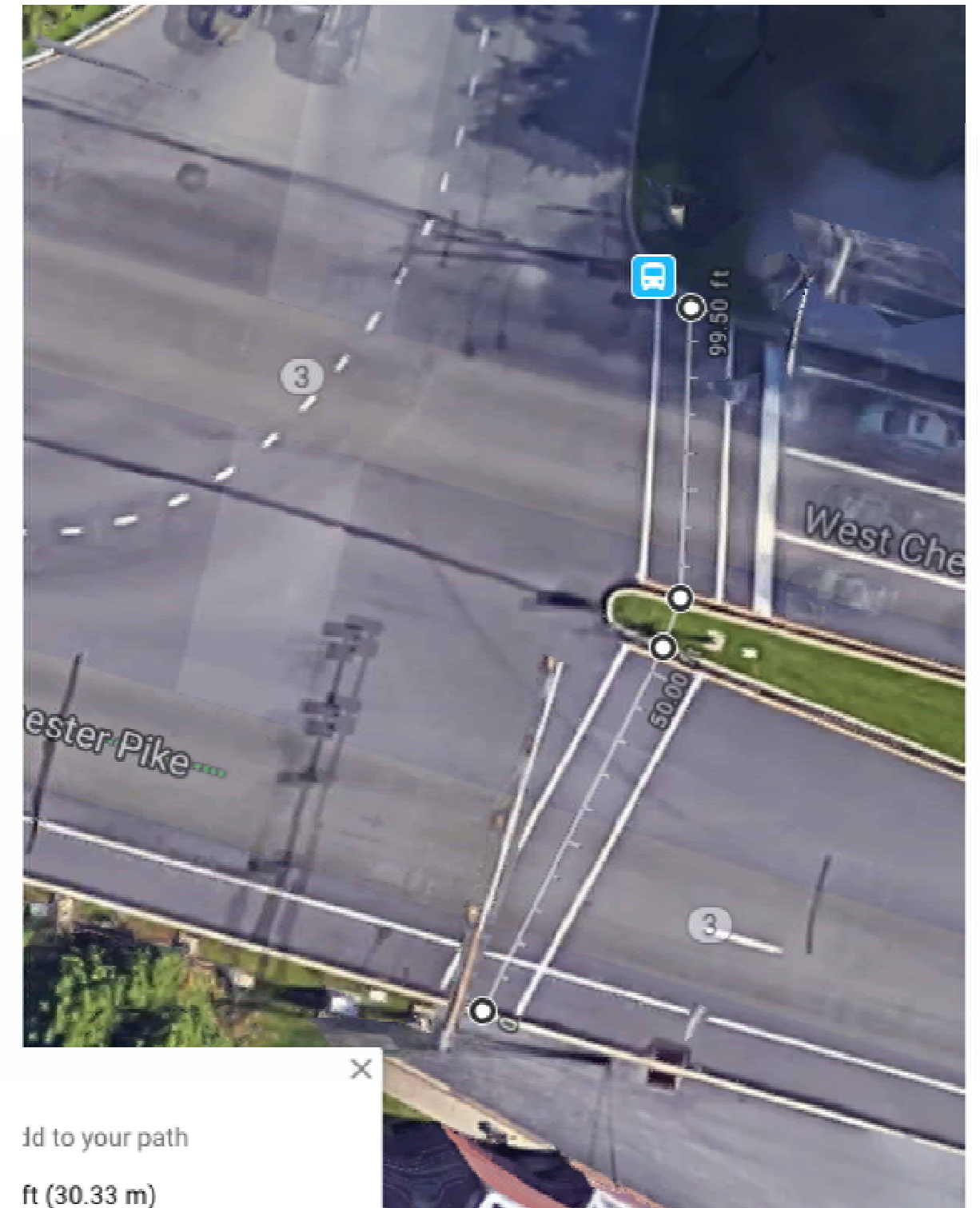
LTS 4:





# Level of Traffic Stress

## LTS 4:

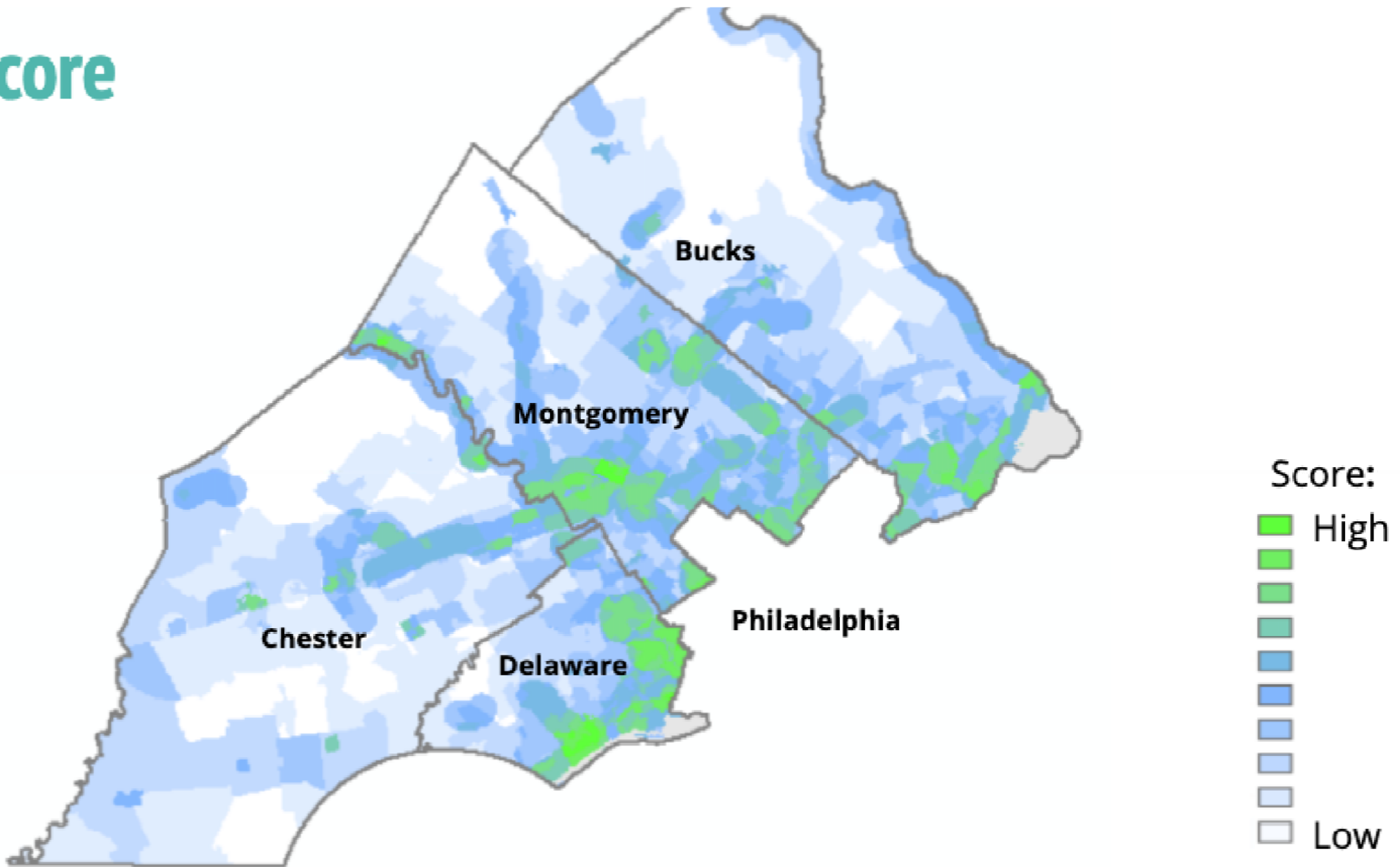


Id to your path  
ft (30.33 m)



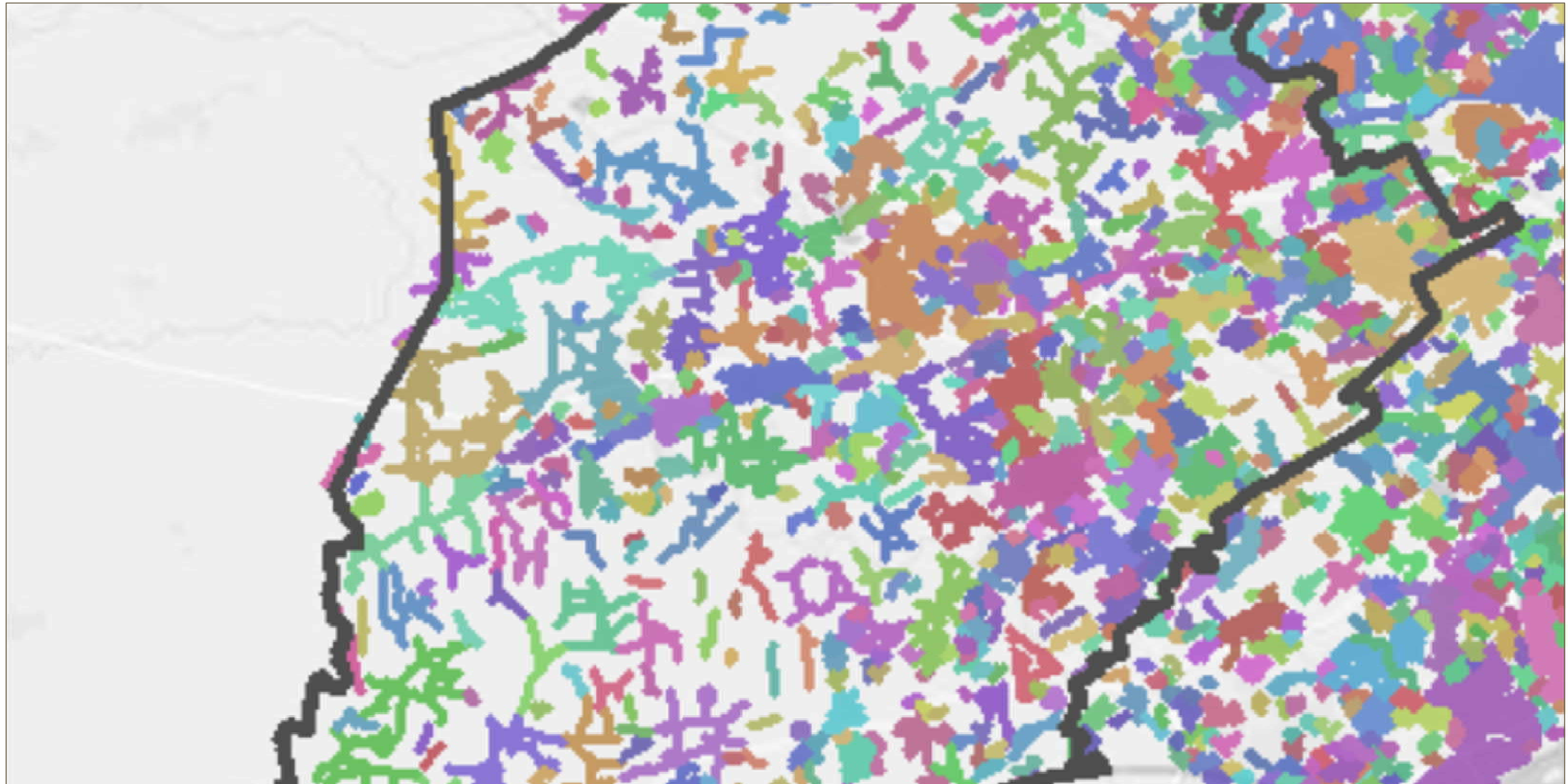
# Regional Connectivity Analysis

**CI score**



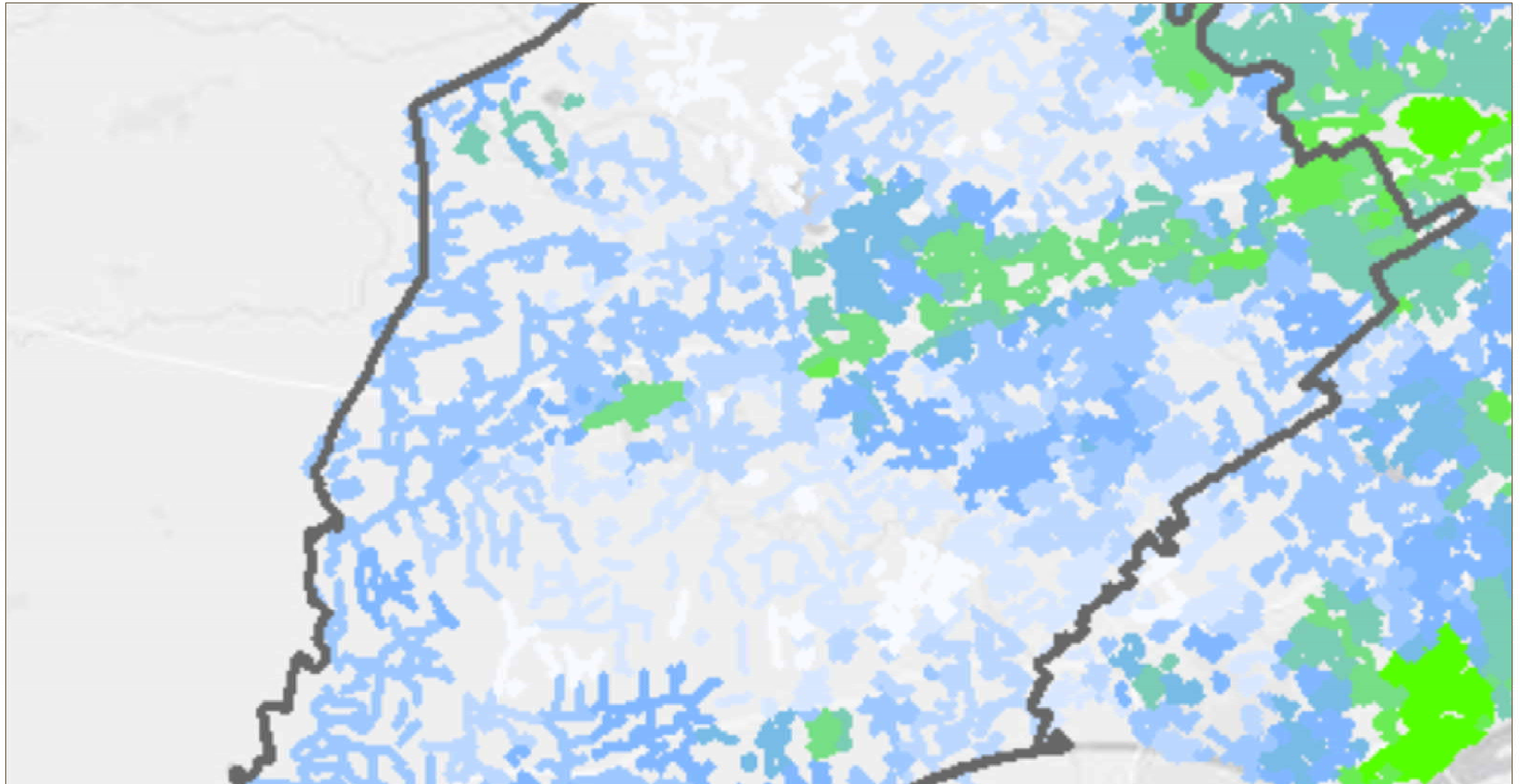


# Regional Connectivity Analysis



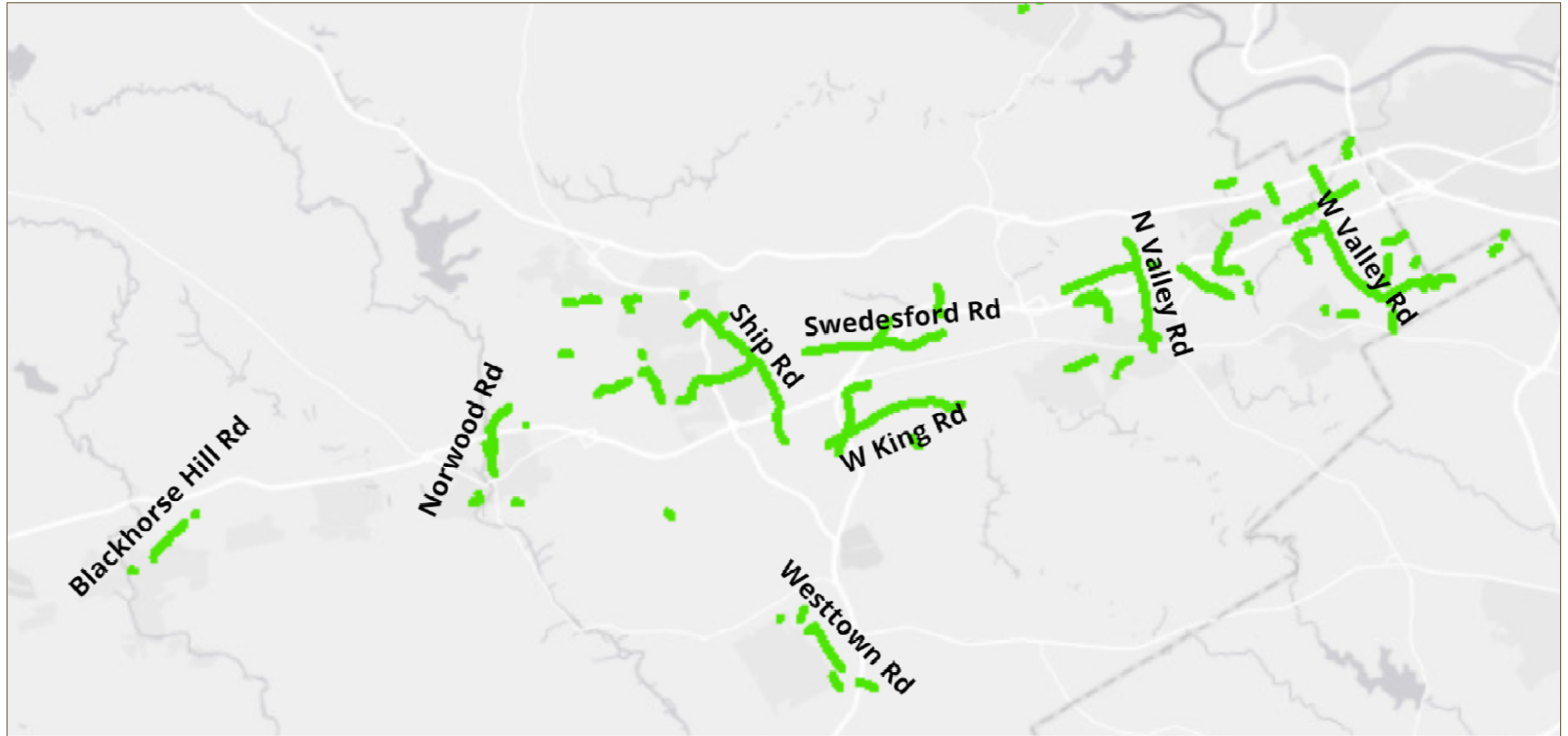


# Regional Connectivity Analysis



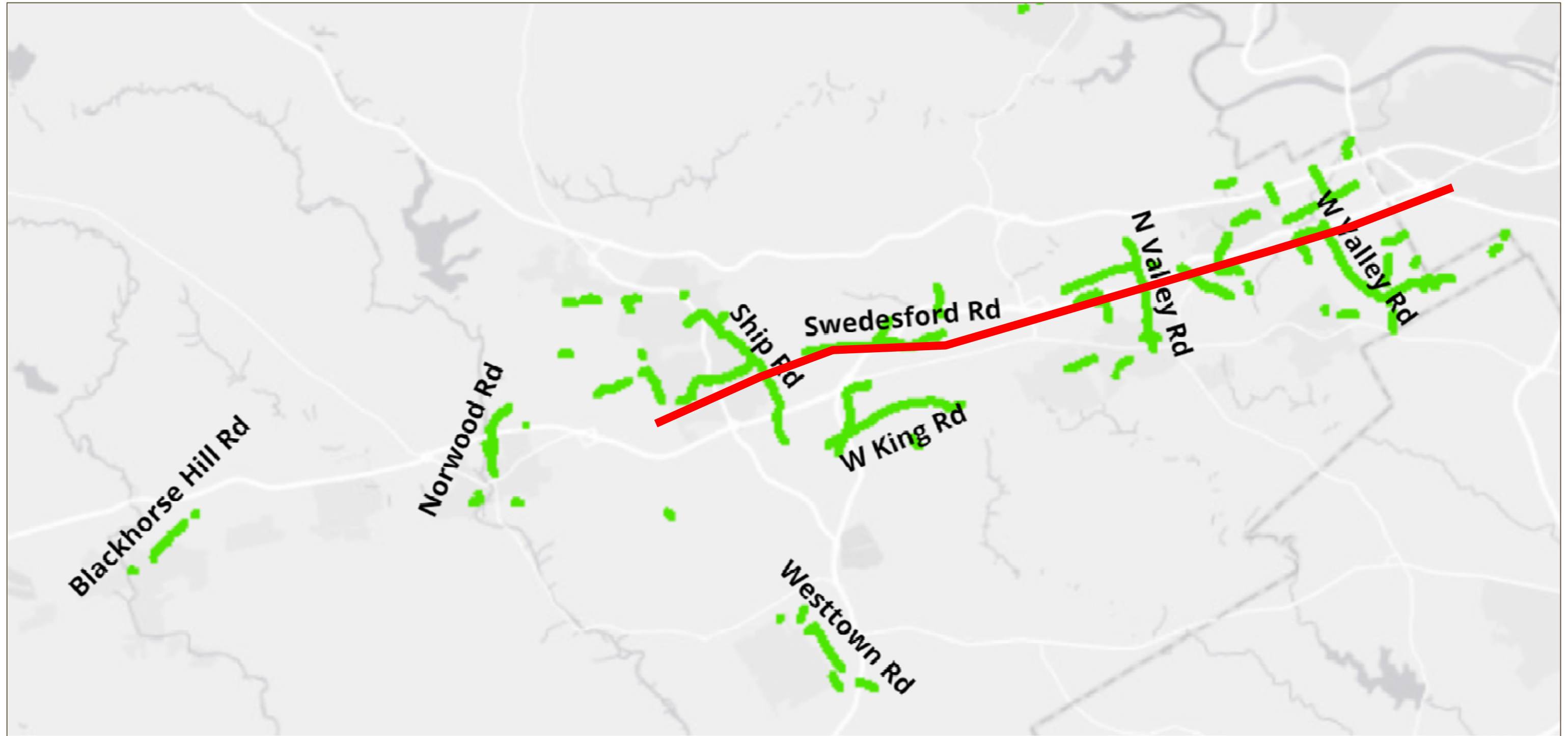


# Regional Connectivity Analysis





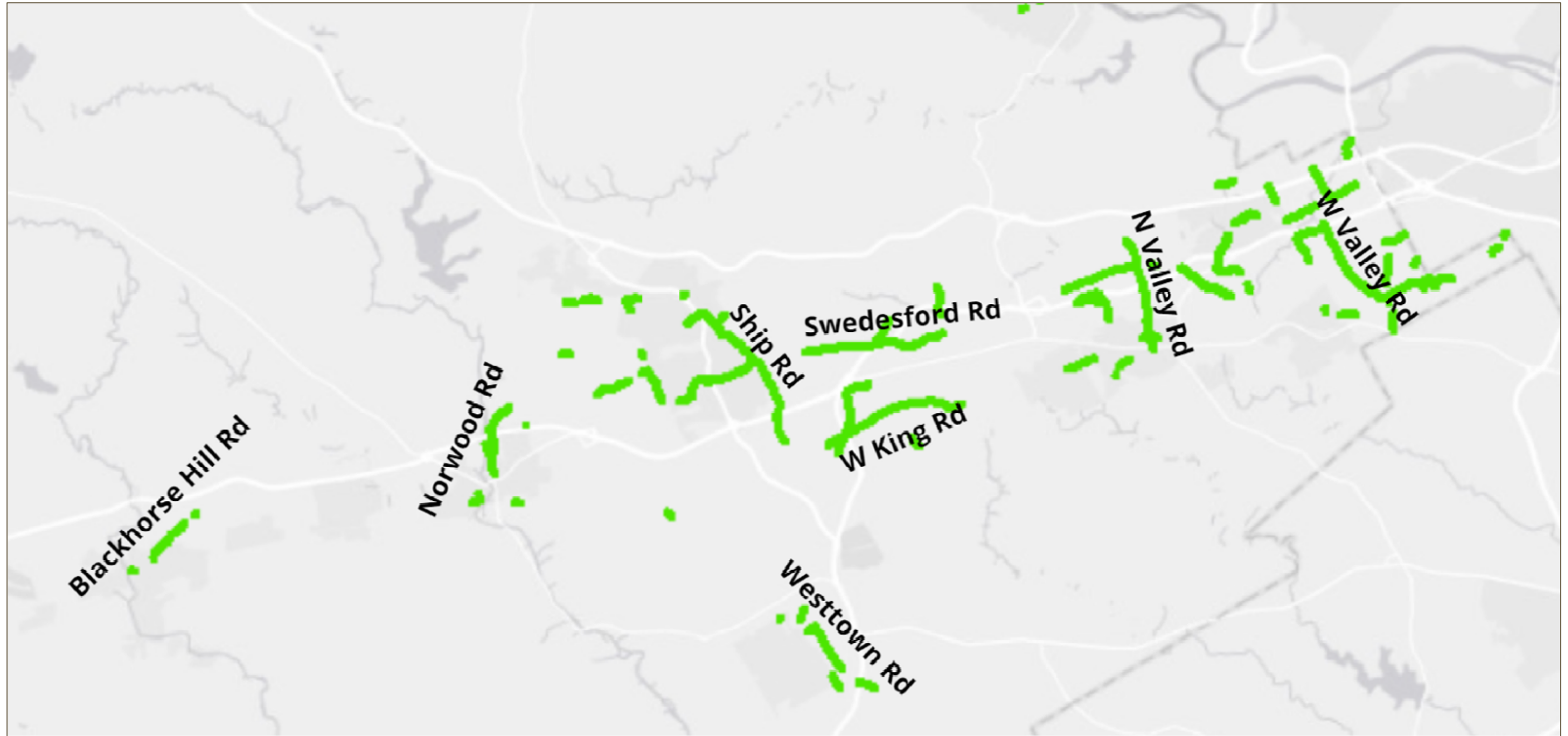
# Regional Connectivity Analysis





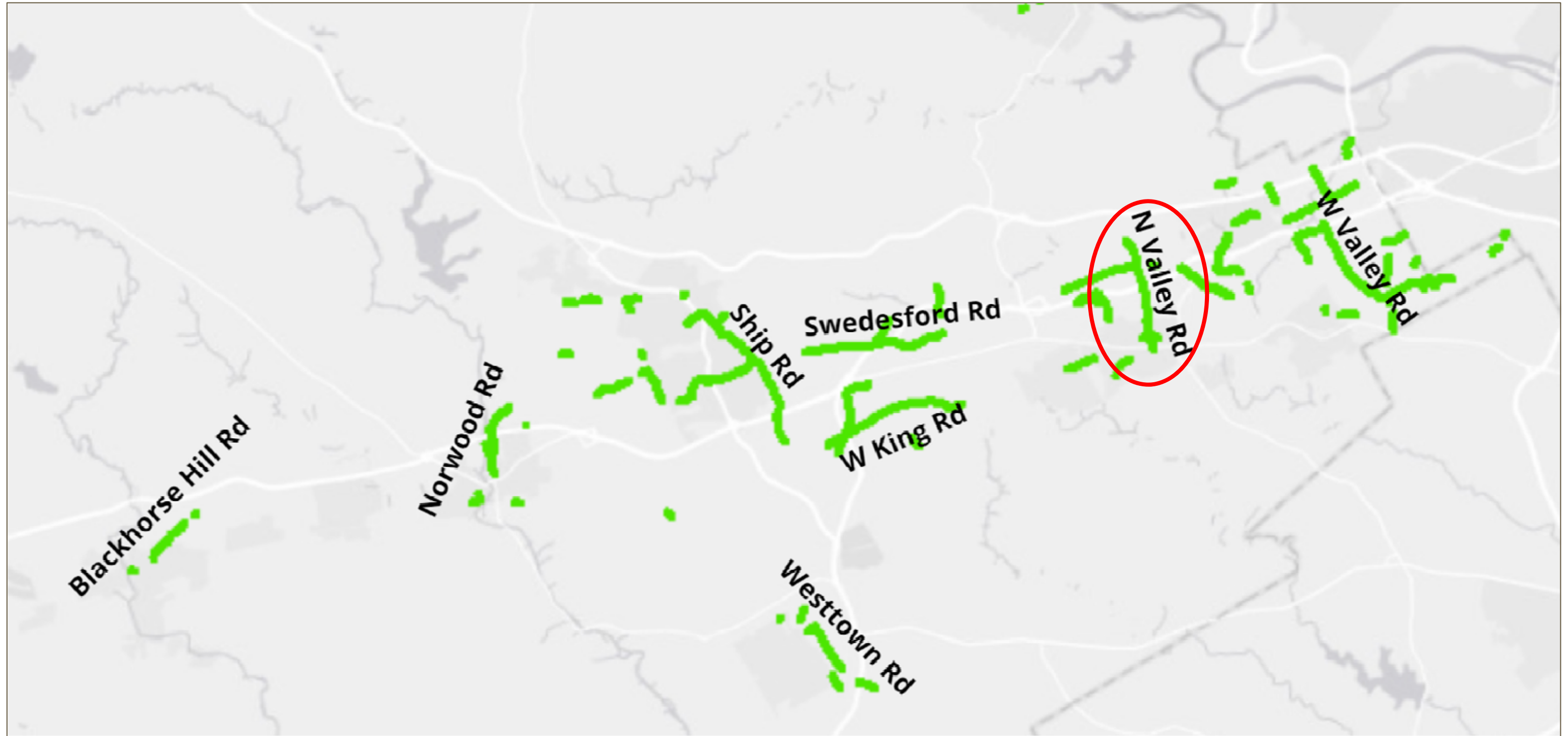


# Regional Connectivity Analysis



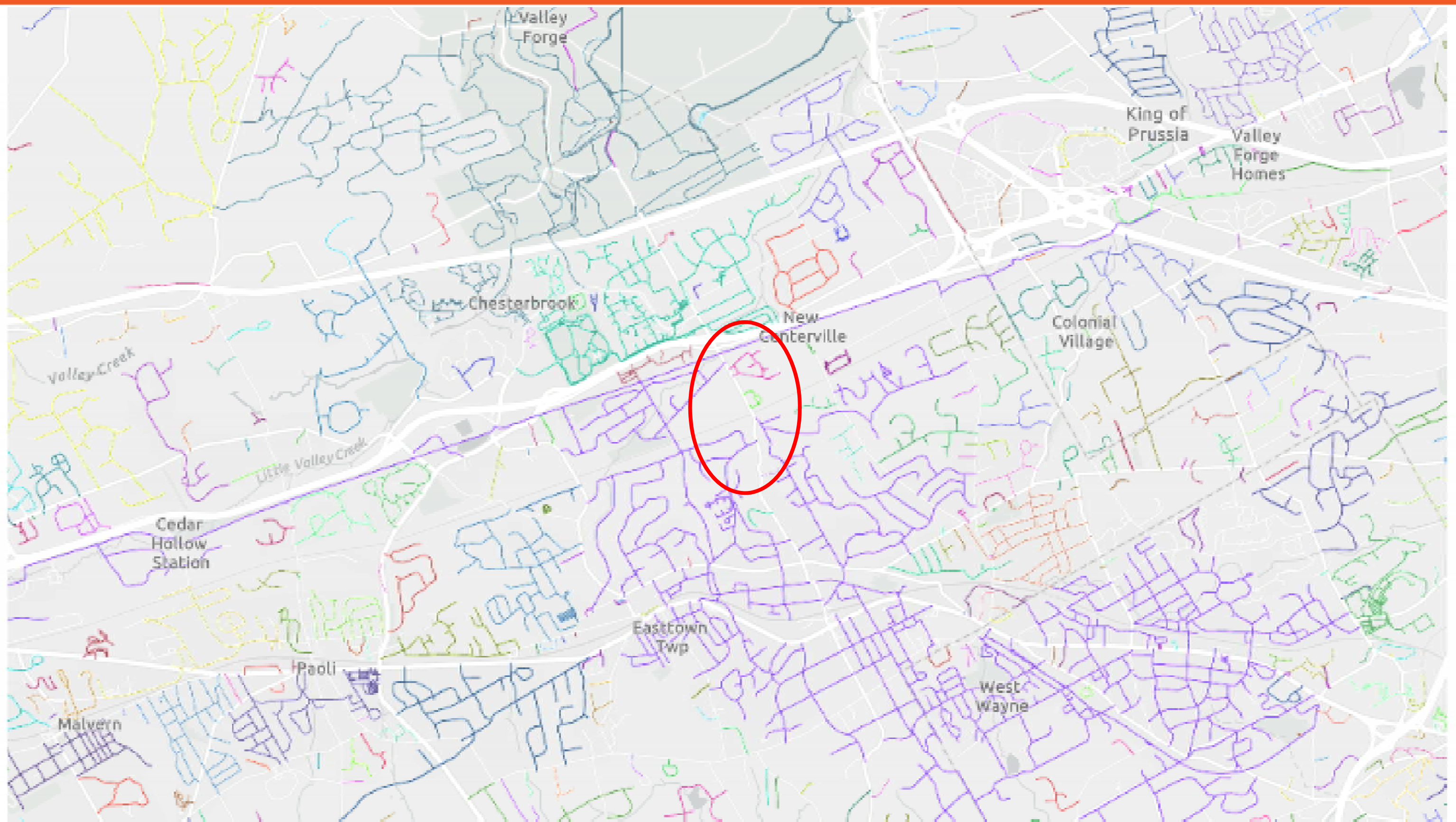


# Regional Connectivity Analysis



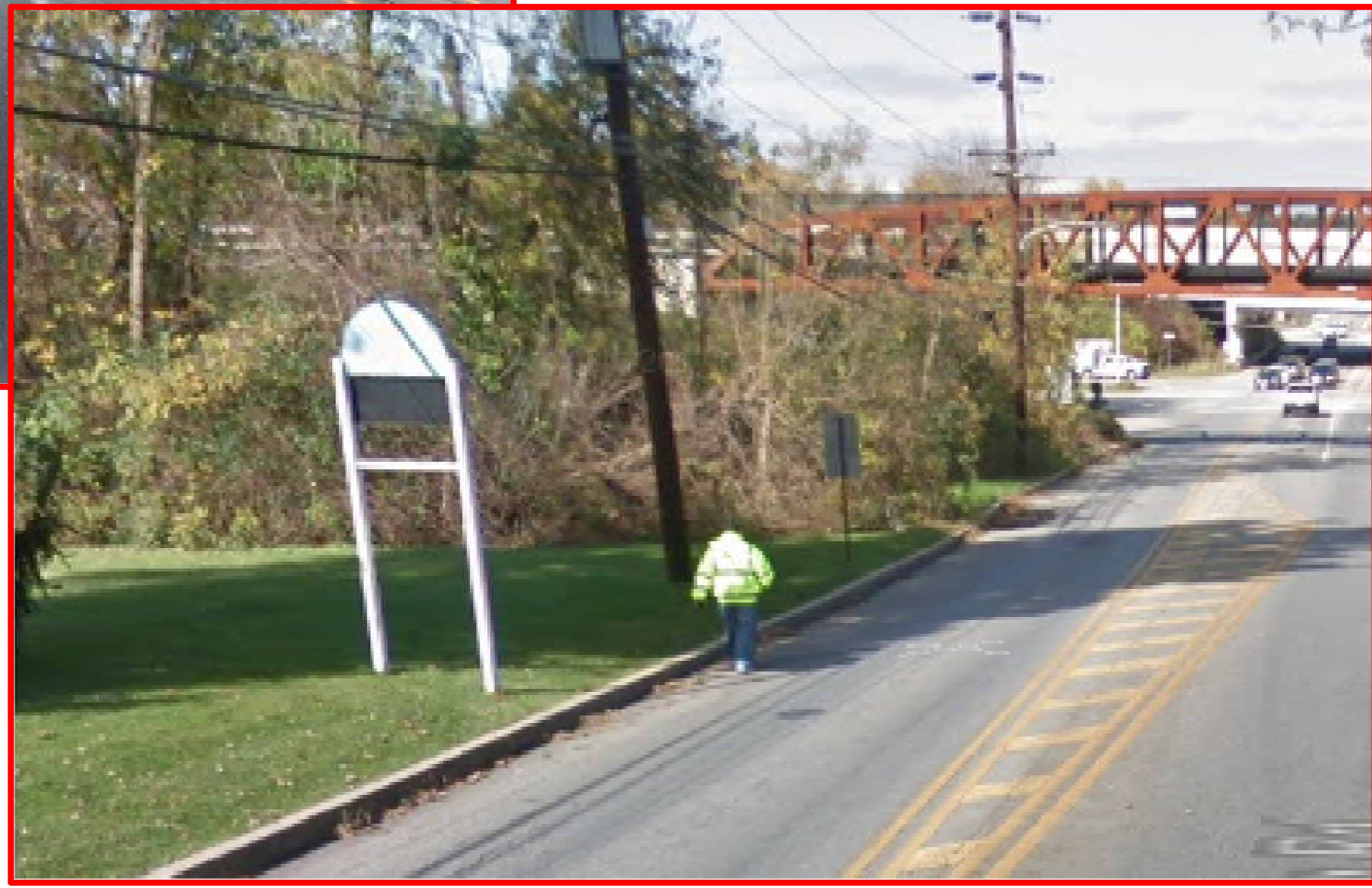


# Regional Connectivity Analysis





# Regional Connectivity Analysis



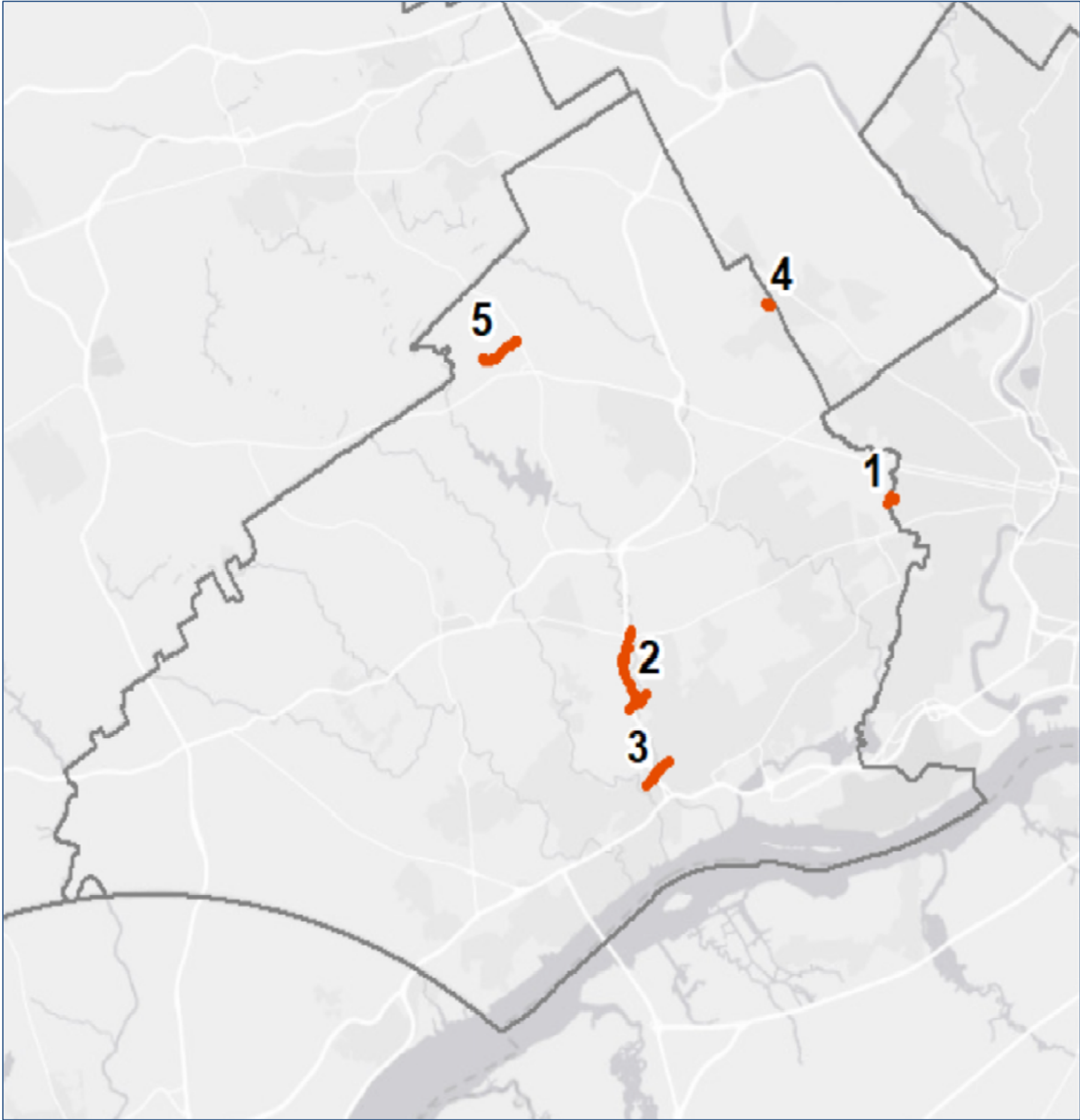


# Regional Connectivity Analysis



Top Non-Circuit Trails:  
**Ranked by score**

Rank	Name	Score
1	Cobbs Creek Trail - Upper Darby Connector	20
2	Leiper-Smedley Trail	13
3	MacDade Blvd Pedestrian Bridge	11
4	Haverford College Connector	10
5	Goshen Trail	7





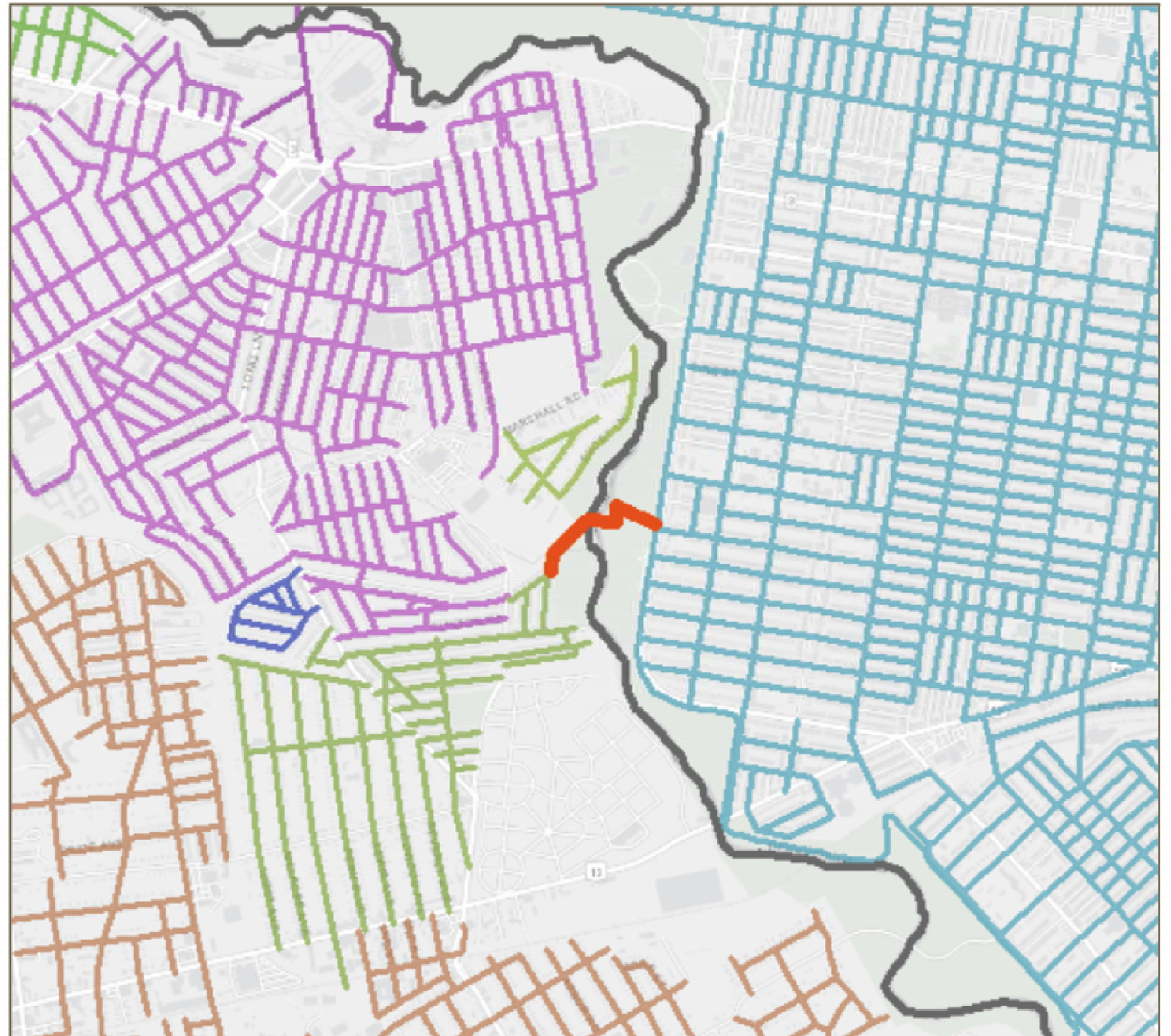
# Regional Connectivity Analysis

## Non-Circuit Trail #1

**Name:**

Cobbs Creek Trail -  
Upper Darby  
Connector

**Overall score: 20**





# Thank



[leonard@bicyclecoalition.org](mailto:leonard@bicyclecoalition.org)

Twitter: [@BikingTheRegion](https://twitter.com/BikingTheRegion)