



Trail Expansions

Grace Trail/Haverford Reserve Network:

South – The Quadrangle

North - Al & Nancy Holm Property

PHL GreenIMPACT, a 501c3

PHL Green IMPACT



Where Do YOU Want to Make Your Green Impact?



PHL Green IMPACT & CPGP Make a Difference at Every Level

BACKYARD WATERSHED



BACKYARD

Every backyard is part of a watershed. In our region, **PHL Green IMPACT** has partnered with the **Delaware River Watershed Initiative** to make available to local residents best practices for land and water stewardship right where they live. Our **Green APPtitude** mobile app is under development.

HEART OF THE TIGER SOUL OF THE CRANE



SCHOOL & COMMUNITY

Heart of the Tiger, Soul of the Crane is an educational program currently under development with science teachers from five pilot high-schools. The program supplements standard wetlands study and field excursions locally with a two-week virtual classroom collaboration involving science students in China. **Footsteps of William Penn** is our related Quaker program.

HEINZ NATIONAL WILDLIFE REFUGE



CITY & COUNTY

PHL Green Impact is partnering with the **John Heinz National Wildlife Refuge** at Tinicum to assess how the **Connect The DOTS** program (see Region description below) can contribute to improve water quality and lessen run-off into Tinicum's Darby and Ithan tributaries.

DELAWARE RIVER WATERSHED



REGION

Connect the DOTS links existing water-related citizen science programs, outdoor recreation, wetlands education and individual stewardship initiatives. The pilot collaboration of four townships in Delaware County is scalable throughout the watershed. It is based at the Haverford Township Community Recreation & Environmental Center.

PHL Green IMPACT is administered by China Partnership of Greater Philadelphia, a 501(c)3 non-profit founded in July 2011. Supporters interested in only the purely local (backyard, school & community, city & regional) levels of the program can request that their contributions be applied to local PHL Green IMPACT uses only.

PHL Green IMPACT



PHL-China Water Stewardship Steering Committee Status

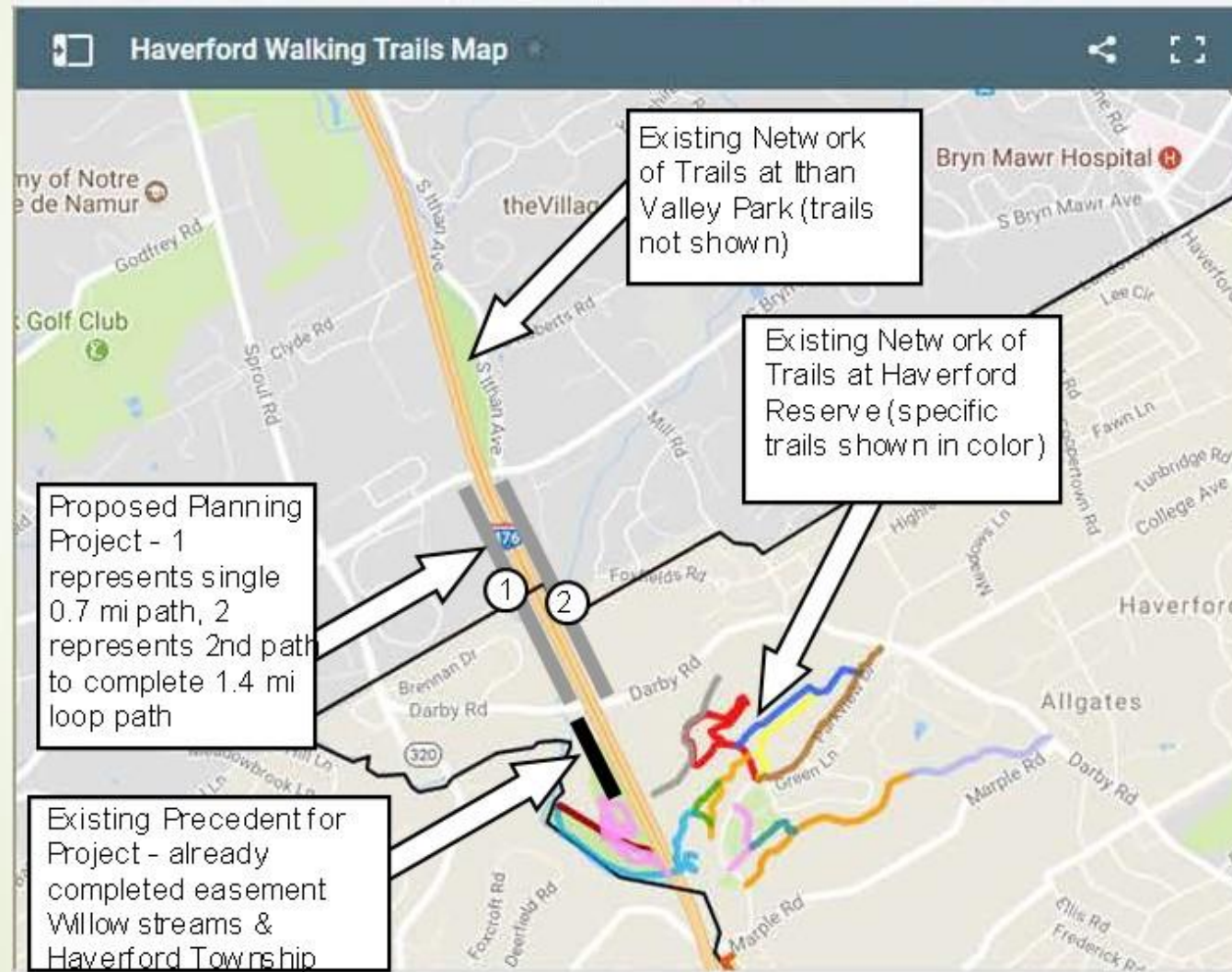
(As of 9/13/18)

First Name	Last Name	Title and Affiliation
Laurie	Bachman	Executive Director, Riverbend Environmental Education Center
Kevin	Brophy	Co-founder and Managing Principal, Meidlinger Partners, LLC
Bianca	Charbonneau	4th Year UPenn PhD Graduate Student and Mid-Atlantic Expert on Dune Erosion
Chris	Crockett	Chief Environmental Officer, Aqua America
Steve	Elkington	Former Program Leader, U.S. National Trails System
Lamar	Gore	Manager, John Heinz National Wildlife Refuge
Qizhong (George)	Guo	Former President, Chinese American Water Resources Association
Andrew	Johnson	Program Director, Watershed Protection Program, William Penn Foundation
Christine	Knapp	Director, Office of Sustainability, City of Philadelphia
Derron	LaBrake	Principal, Wetlands & Ecology Inc
Stanley	Laskowski	Founder, Philadelphia Global Water Initiative
Roger	Latham	Principal Investigator, Land-Water Stewardship Blue-Ribbon Science Panel for Delaware River Watershed Initiative
Bill	Lucas	Partner, Sustainable Water Investment Group
Sean	Mahoney	Director of Marketing, Philadelphia Regional Port Authority
Maura	McCarthy	Executive Director, Friends of the Wissahickon
Debra	McCarty	Commissioner, Philadelphia Water Department
Scott	Moore	Senior Fellow, Kleinman Center for Energy Policy (UPenn); Water Resource Specialist, World Bank's Global Water Practice
Molly	Morrison	President, Natural Lands
Christiaan	Morssink	President, Global Water Alliance
Howard	Neukrug	Director of the Water Center at UPenn and former Commissioner and CEO of Philadelphia Water Department
Patrick	Patterson	Regional Director, PADEP Southeast Regional Office
Jaclyn	Rhoads	Board President, Darby Valley Creek Association
Drew	Smith	Executive Director, Friends Council on Education
Tabb	Sullivan	Chair for Bike Delaware County, Bicycle Coalition of Greater Philadelphia
Robert	Traver	Director, Villanova Center for Resilient Water Systems
Bonnie	Van Alen	President & Executive Director, Willistown Conservation Trust
David	Velinsky	Head of the Department of Biodiversity, Earth and Environmental Science at Drexel University
Roland	Wall	Director, Patrick Center for Environmental Research and the Delaware River Watershed Initiative, Academy of Natural Sciences of Drexel
George	Wood	Leading Mid-Atlantic-area Ornithologist

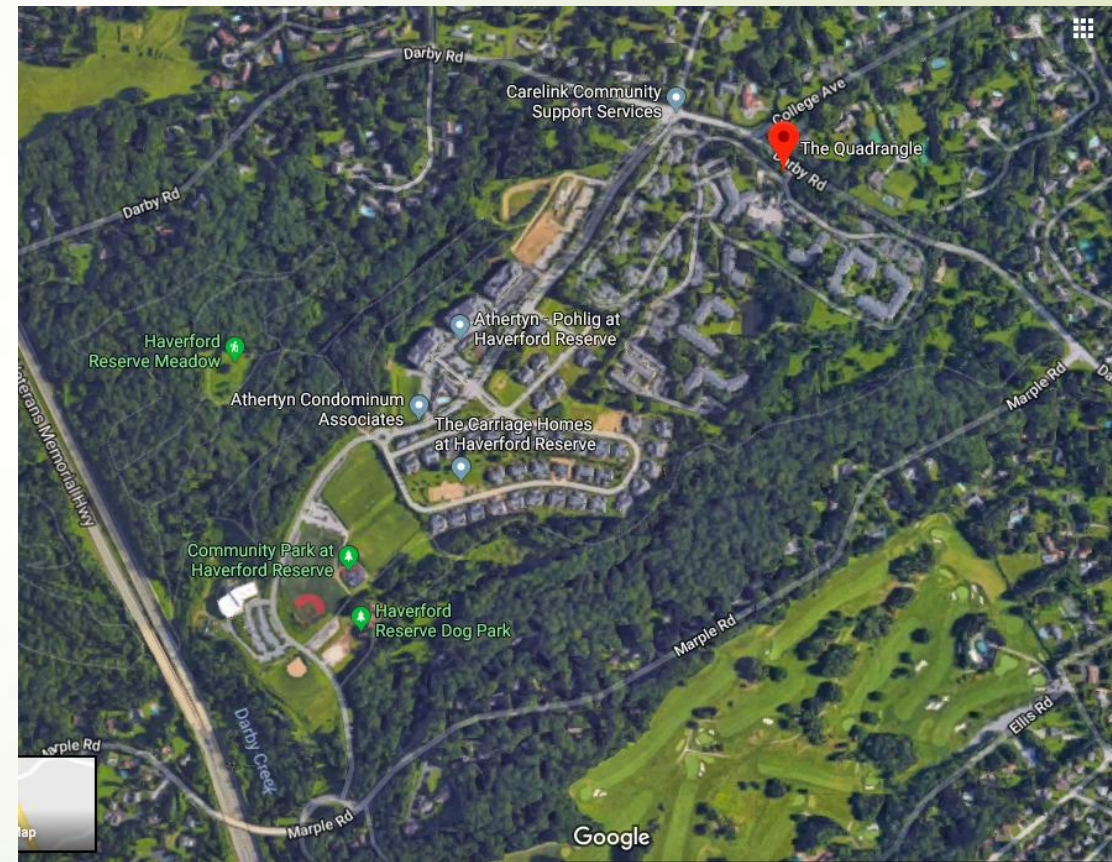
PHL Green IMPACT is administered by China Partnership of Greater Philadelphia, a 501(c)3 non-profit founded in July 2011. As a DBA affiliate of CPGP, PHL Green IMPACT is the entity responsible for purely local environmental initiatives at the backyard, community/school, city/county and regional levels within Greater Philadelphia 11-county region and beyond in the Delaware River Watershed.

PHL Green IMPACT	Haverford Community Recreation & Environmental Center (CREC) 9000 Parkview Dr, Haverford, PA 19041	Web: Greenimpact.world	Contact: Terry Cooke	tcooke@chinaphilly.org (610) 504-2245
------------------	---	---------------------------	-------------------------	--

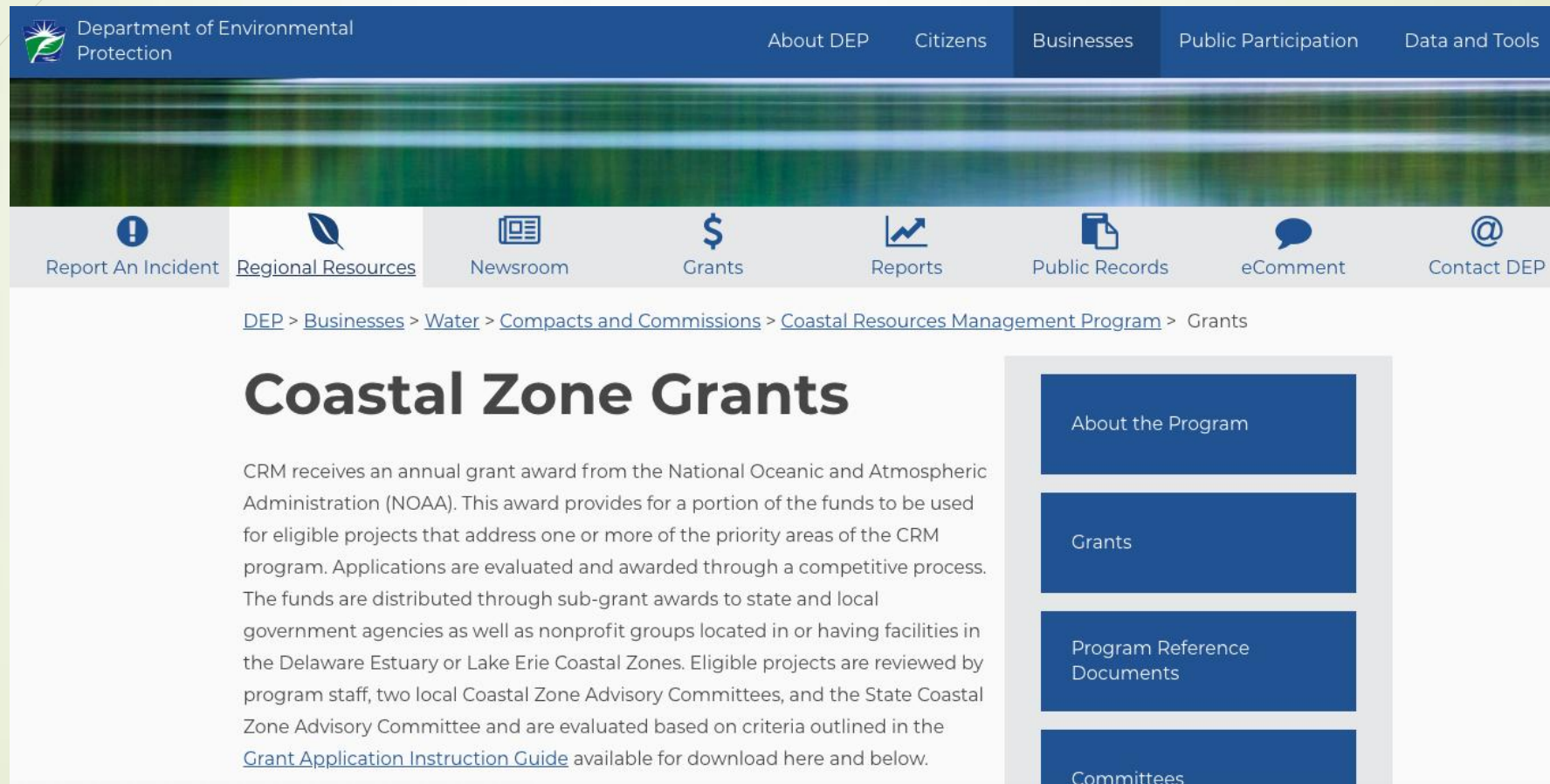
North from the Grace Trail trailhead (Darby Road)



South from the Haverford Reserve – The Quadrangle



Next Step – PA-DEP Coastal Resources Grant



The screenshot shows the Department of Environmental Protection website. The header includes the DEP logo and navigation links: About DEP, Citizens, Businesses, Public Participation, and Data and Tools. A secondary navigation bar contains icons and labels for: Report An Incident, Regional Resources, Newsroom, Grants, Reports, Public Records, eComment, and Contact DEP. The breadcrumb trail reads: DEP > Businesses > Water > Compacts and Commissions > Coastal Resources Management Program > Grants. The main heading is "Coastal Zone Grants". The text describes the annual grant award from NOAA for eligible projects in the Delaware Estuary or Lake Erie Coastal Zones. A sidebar on the right contains four blue buttons: "About the Program", "Grants", "Program Reference Documents", and "Committees".

Department of Environmental Protection

About DEP Citizens Businesses Public Participation Data and Tools

Report An Incident Regional Resources Newsroom Grants Reports Public Records eComment Contact DEP

DEP > [Businesses](#) > [Water](#) > [Compacts and Commissions](#) > [Coastal Resources Management Program](#) > Grants

Coastal Zone Grants

CRM receives an annual grant award from the National Oceanic and Atmospheric Administration (NOAA). This award provides for a portion of the funds to be used for eligible projects that address one or more of the priority areas of the CRM program. Applications are evaluated and awarded through a competitive process. The funds are distributed through sub-grant awards to state and local government agencies as well as nonprofit groups located in or having facilities in the Delaware Estuary or Lake Erie Coastal Zones. Eligible projects are reviewed by program staff, two local Coastal Zone Advisory Committees, and the State Coastal Zone Advisory Committee and are evaluated based on criteria outlined in the [Grant Application Instruction Guide](#) available for download here and below.

About the Program

Grants

Program Reference Documents

Committees



**We welcome the engagement
and support of our
community!**