



THE VALLEY FORGE TO HEINZ REFUGE TRAIL



Robert Thomas & John Fischer
February 9th, 2019



the Circuit

Greater Philadelphia's
Regional Trail Network

- Existing Trails
- Trails in Progress
- Planned Trails

To Harrisburg

To Reading, Pottsville &
Appalachian Tr.

To Bethlehem

To Easton, the Poconos &
Wilkes-Barre

To New Brunswick,
Newark, and NYC

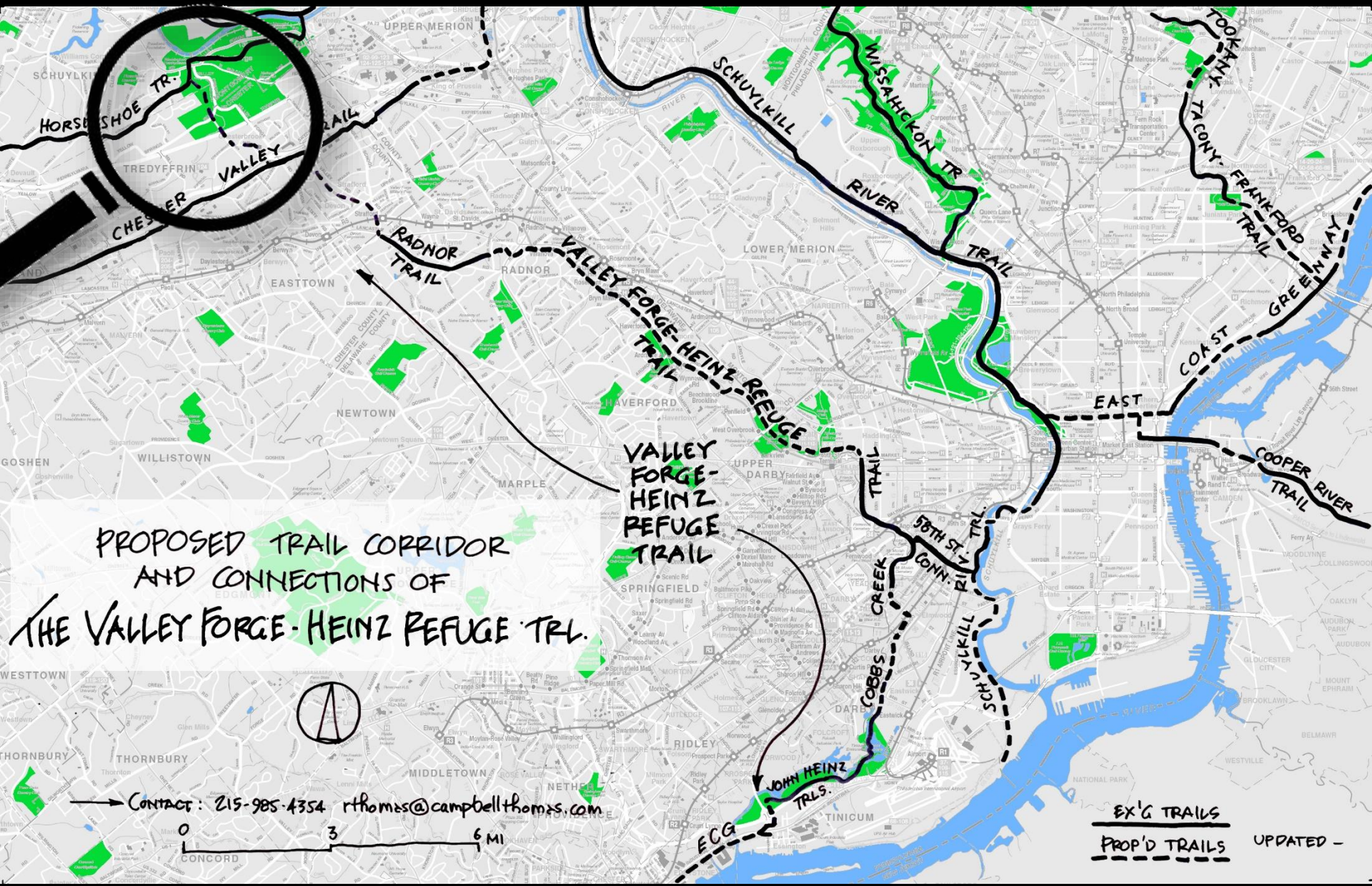
To Wilmington, Baltimore,
and Washington, DC

To Bridgeton

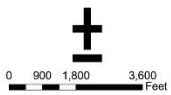
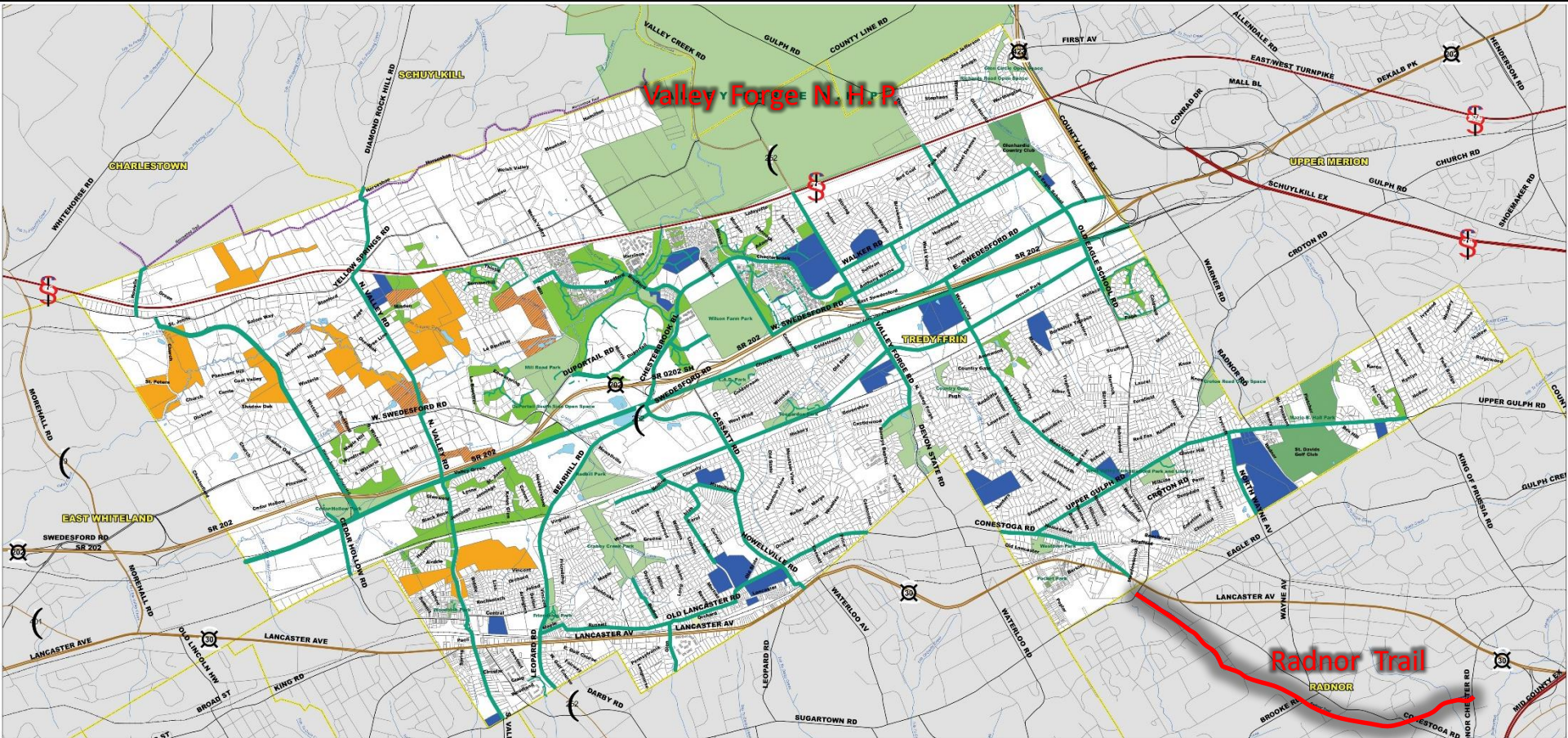


May 2012





Tredyffrin Township Park, Rec., Open Space Network



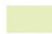







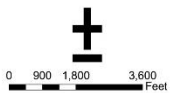
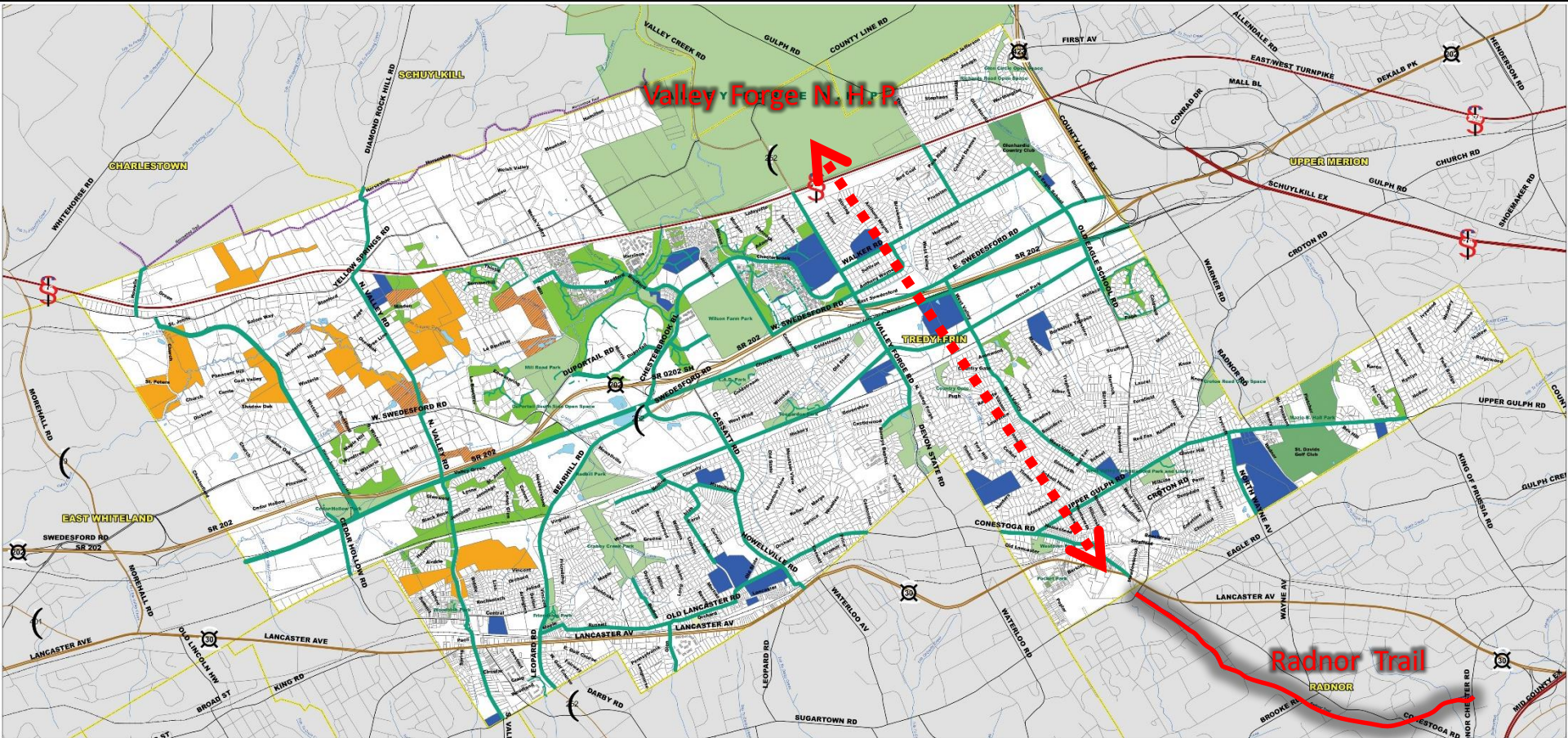
- | | |
|--|---|
|  Cemetery |  Open Land Conservancy Easements |
|  Golf Course |  Open Land Conservancy Preserve |
|  Homeowner Association Open Space |  Recreational & Open Space Sites |
|  School Property |  Green Routes Network |

Figure 3.2.3
PARK, RECREATION AND
OPEN SPACE NETWORK
Tredyffrin Township
Comprehensive Plan &
Historic Preservation Plan

Tredyffrin Township Park, Rec., Open Space Network











- | | | | |
|---|----------------------------------|---|---------------------------------|
|  | Cemetery |  | Open Land Conservancy Easements |
|  | Golf Course |  | Open Land Conservancy Preserve |
|  | Homeowner Association Open Space |  | Recreational & Open Space Sites |
|  | School Property |  | Green Routes Network |

Figure 3.2.3
PARK, RECREATION AND
OPEN SPACE NETWORK
Tredyffrin Township
Comprehensive Plan &
Historic Preservation Plan

Radnor Trail



RADNOR MULTI-PURPOSE TRAIL MAP

www.radnor.com



LEGEND

	Parking
	Restroom
	Trail Entrance
	Bike Path



Radnor Trail Entrances (From West to East)

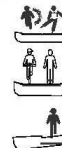
1. Sugartown Rd.
2. Gallagher Rd.
3. W. Wayne Ave.
4. Brooke Rd.
5. Conestoga Rd.
6. John Cappelli Golf Range
7. Radnor Chester Rd.

Path Safety and Etiquette

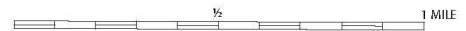
All paths are to be kept to the right when passing or approaching other users. Yield to the right when someone is passing. Move off the path when stopping. When passing the path.

Yield - When your path or call is approaching other users, yield to the right.

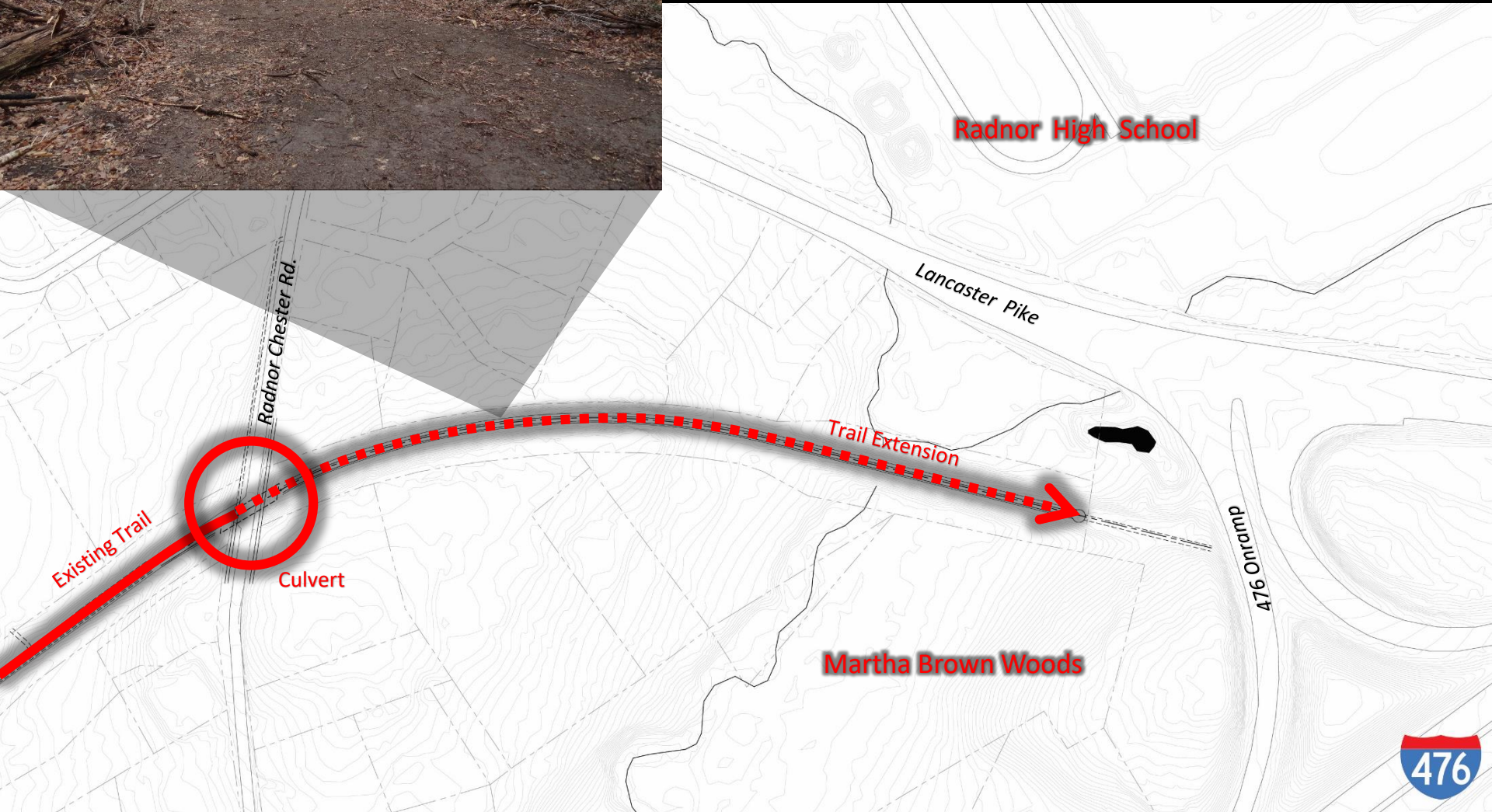
Follow the lead - Follow the lead of a person bicycling. Do not ride on heavily used paths.



Trail Distance = 2.4 miles



Radnor Trail Extension





	EXISTING TRAIL OR FOOTPATH		PHASE I		PHASE II
	PROPOSED TRAIL ALIGNMENT OPTION SEE NARRATIVE FOR DESCRIPTION AND EVALUATION		PHASE III		PHASE IV
	PROPOSED "SHARED ROAD" OPTION SEE NARRATIVE FOR DESCRIPTION AND EVALUATION				

FILE: k:\syst-lin\tdwgpl\brn_rpt.dwg	DRAWN BY	ZMS/hsm
PLOT SCALE: as noted	CHECKED BY	RPT
REVISIONS	DATE	11/30/2015
	PROJECT NO.	RAD-T-11

Forge to Refuge Trail Feasibility Study

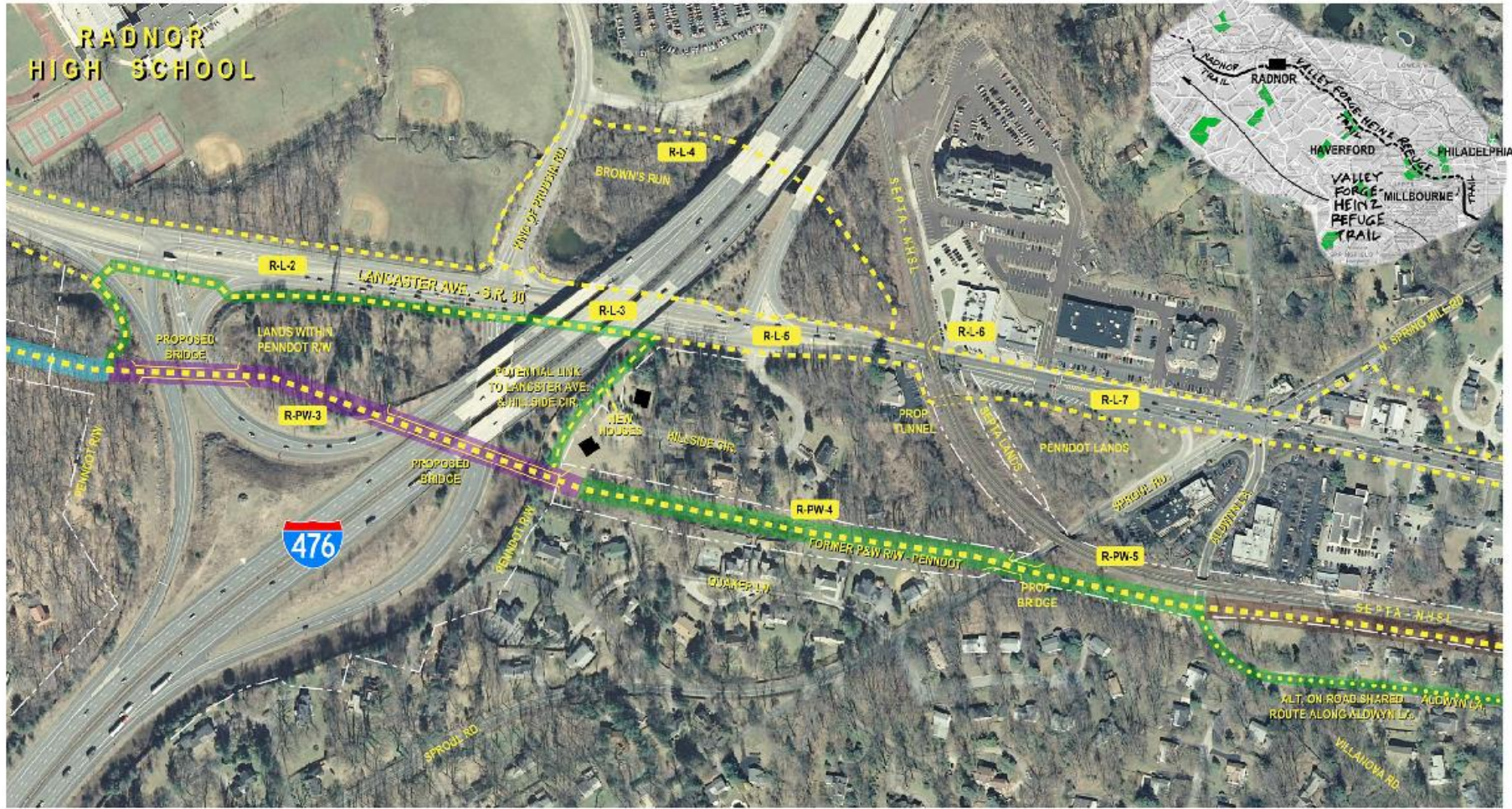
Radnor Township 301 Iven Avenue Wayne, Pennsylvania 19087-5297

Campbell Thomas & Company 1504 South Street, Philadelphia, PA 19146 215-545-1076
 TPW Design Studios 310 Elmwood Boulevard, York, Pennsylvania 17403 717-843-1897

TITLE
Western Section

DWG NO.
W-1





LEGEND

- EXISTING TRAIL OR FOOTPATH
- PROPOSED TRAIL ALIGNMENT OPTION (SEE NARRATIVE FOR DESCRIPTION AND EVALUATION)
- PROPOSED "SHARED ROAD" OPTION (SEE NARRATIVE FOR DESCRIPTION AND EVALUATION)

PHASES

- PHASE I
- PHASE II
- PHASE III
- PHASE IV

0 50 250 FT

FILE: k:\rad-trail\wpa\k_basemap.dwg	DRAWN BY: ZMS/horn
PLOT SCALE: as noted	CHECKED BY: RPT
REVISONS	DATE
	11/30/2015
	PROJECT NO. RAD-T-11

Forge to Refuge Trail Feasibility Study

Radnor Township 301 Iven Avenue Wayne, Pennsylvania 19087-5297

Campbell Thomas & Company 1504 South Street, Philadelphia, PA 19146 215-545-1076
 TPW Design Studios 310 Elmwood Boulevard, York, Pennsylvania 17403 717-843-1897

TITLE: Western Section
 DWC NO.: W-2



	EXISTING TRAIL OR FOOTPATH		PHASE I		PHASE II
	PROPOSED TRAIL ALIGNMENT OPTION SEE NARRATIVE FOR DESCRIPTION AND EVALUATION		PHASE III		PHASE IV
	PROPOSED "SHARED ROAD" OPTION SEE NARRATIVE FOR DESCRIPTION AND EVALUATION				

FILE: k:\proj-lin\14dwp\14dwp.mxd	DRAWN BY: ZMS/hsm
PLOT SCALE: as noted	CHECKED BY: RPT
REVISIONS	DATE
	11/30/2015
	PROJECT NO. RAD-T-11

Forge to Refuge Trail Feasibility Study

Radnor Township 301 Iven Avenue Wayne, Pennsylvania 19087-5297

Campbell Thomas & Company 1504 South Street, Philadelphia, PA 19146 215-545-1076
 TPW Design Studios 310 Elmwood Boulevard, York, Pennsylvania 17403 717-843-1897

TITLE
Western Section

DWG NO.
W-3

Villanova Station

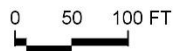


Opportunities:

Space along SEPTA Route 100 Corridor



Example of Potential SEPTA Alignment



FILE: h:\rad-tnl\dwgs\		DRAWN BY: ham	
base map.dwg		CHECKED BY: RPT	
PLOT SCALE: as noted		DATE: ??/??/????	
REVISIONS	REMARKS	PROJECT NO.	RAD-TINI
DATE			

Forge to Refuge Trail Study
XXXX

Campbell Thomas & Company 1504 South Street, Philadelphia, PA 19146 215-545-1076
 TPW Design Studios 310 Elmwood Boulevard, York, Pennsylvania 17403 717-843-1897

TITLE	Gap Map
DWG NO.	G-7-100

Other Examples of Rail-With-Trails



San Clemente, CA



Milton, MA



Duluth, MN



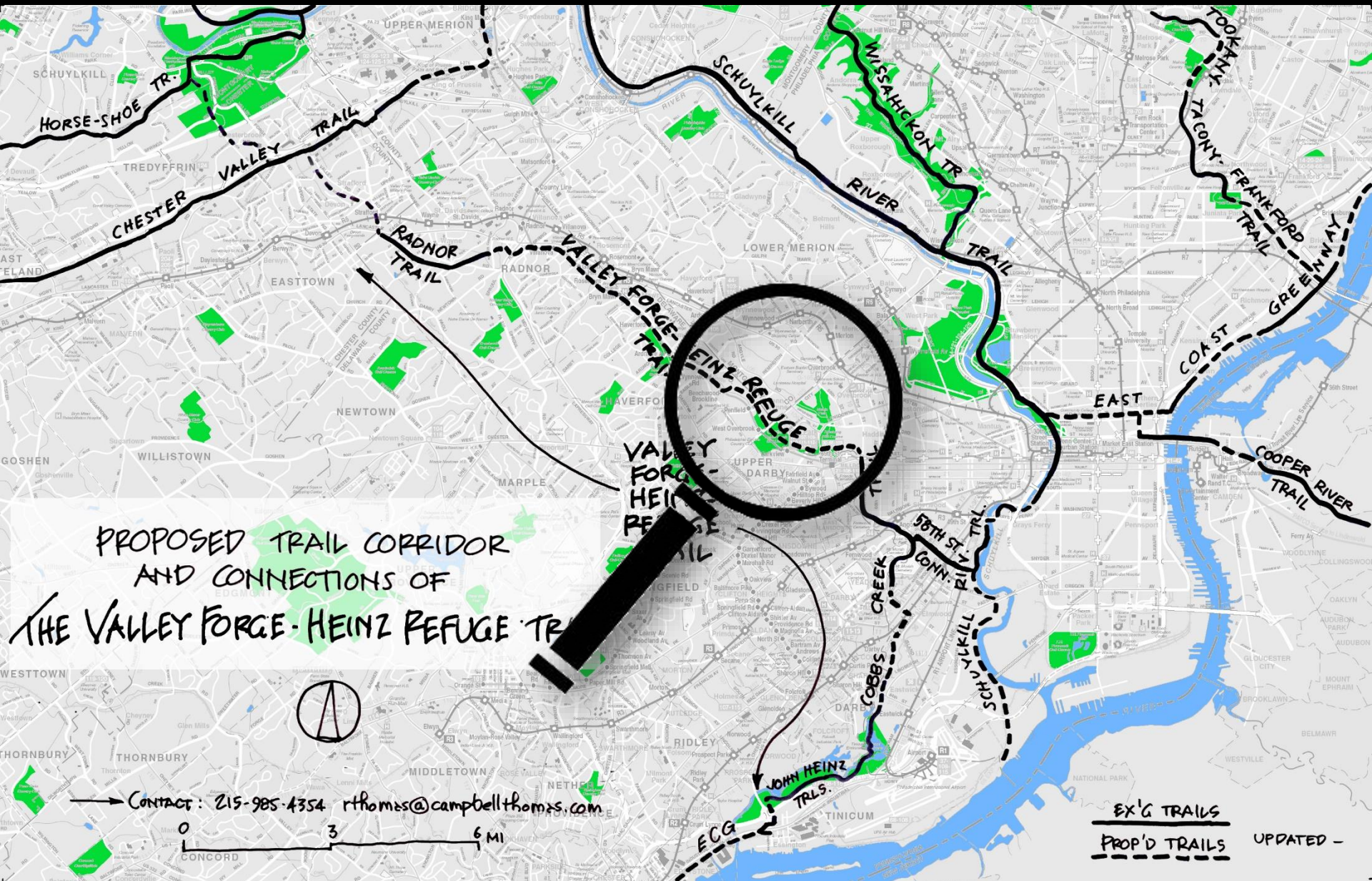
Minneapolis, MN



San Diego, CA



Madison, NJ

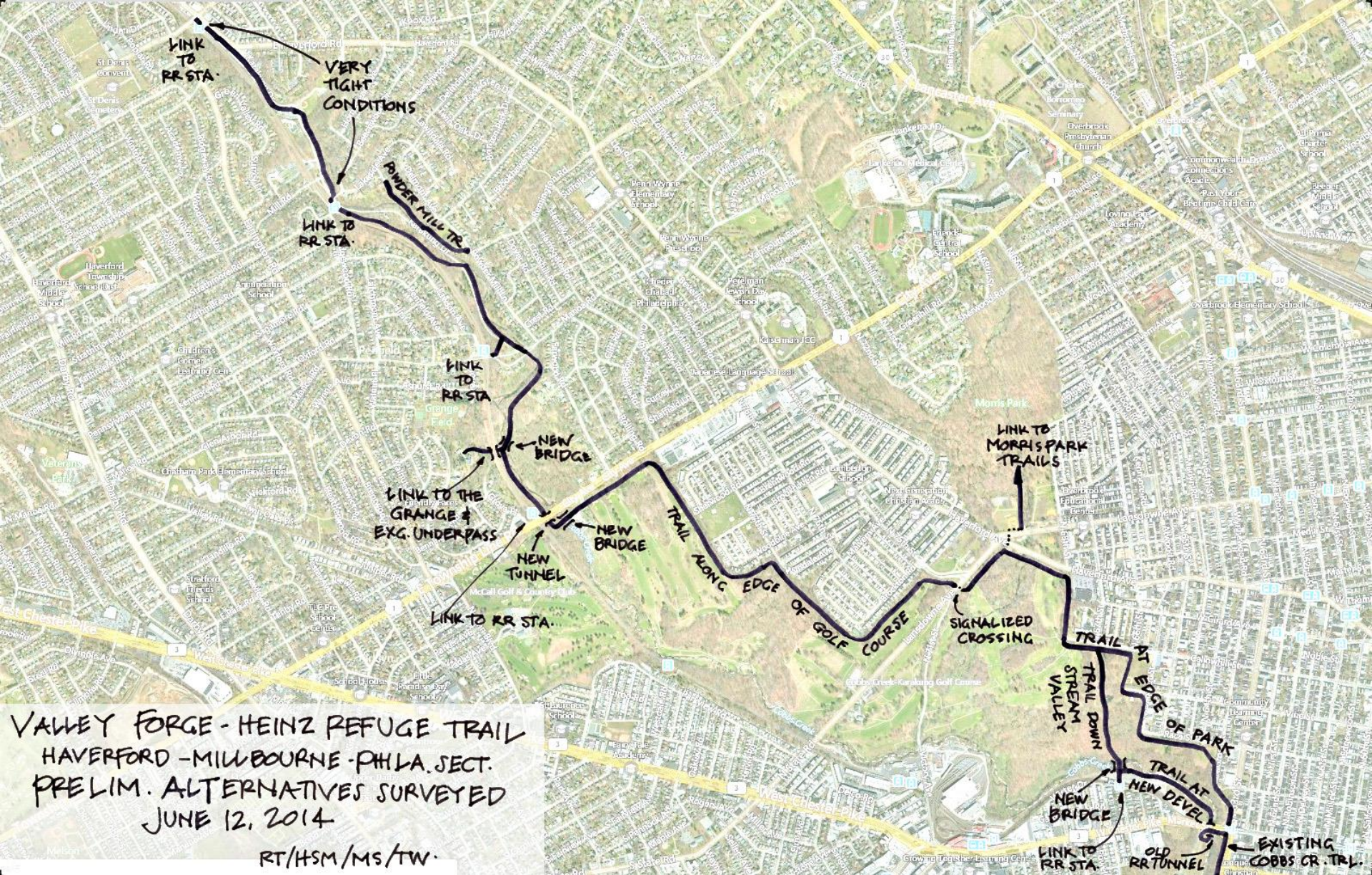


PROPOSED TRAIL CORRIDOR
AND CONNECTIONS OF
THE VALLEY FORGE-HEINZ REFUGE TR

→ CONTACT: 215-985-4354 rthomas@campbellthomas.com



EX'G TRAILS
PROP'D TRAILS UPDATED -



LINK TO RR STA.

VERY TIGHT CONDITIONS

LINK TO RR STA.

POWDER MILL TR

LINK TO RR STA.

NEW BRIDGE

LINK TO THE GRANGE & EXG. UNDERPASS

NEW TUNNEL

LINK TO RR STA.

TRAIL ALONG EDGE OF GOLF COURSE

NEW BRIDGE

SIGNALIZED CROSSING

LINK TO MORRIS PARK TRAILS

TRAIL DOWN STREAM VALLEY

TRAIL AT EDGE OF PARK

TRAIL AT NEW DEVELOP.

NEW BRIDGE

LINK TO RR STA.

OLD RR TUNNEL

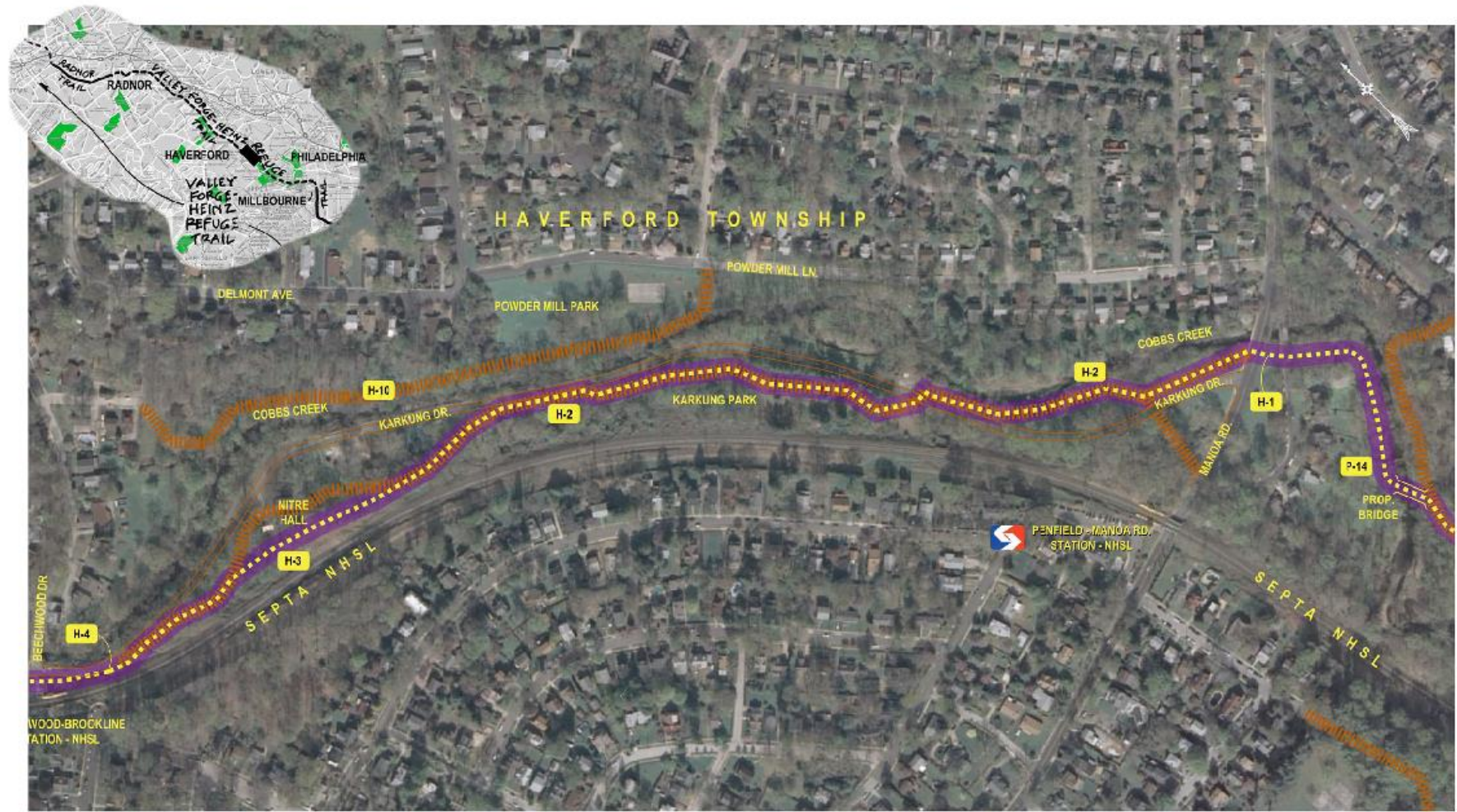
EXISTING COBBS CR. TRL.

VALLEY FORGE - HEINZ REFUGE TRAIL
 HAVERFORD - MILLBOURNE - PHILA. SECT.
 PRELIM. ALTERNATIVES SURVEYED
 JUNE 12, 2014

RT/HSM/MS/TW.



Beechwood Brookline Station



	EXISTING TRAIL OR FOOTPATH		PHASE I		PHASE II
	PROPOSED TRAIL ALIGNMENT OPTION SEE NARRATIVE FOR DESCRIPTION AND EVALUATION		PHASE III		PHASE IV
	PROPOSED "SHARED ROAD" OPTION SEE NARRATIVE FOR DESCRIPTION AND EVALUATION				

FILE: n:\yad-tin\exgs\1 trse.mxd.dwg	DRAWN BY ZMS/hsm
PLOT SCALE: 1" = 1/4 mile	CHECKED BY RPT
REVISIONS	REMARKS
DATE	DATE
	11/30/2015
PROJECT NO. RAD-TIN	

Forge to Refuge Trail Feasibility Study
 Radnor Township 301 Iven Avenue Wayne, Pennsylvania 19087-5297

Campbell Thomas & Company 1504 South Street, Philadelphia, PA 19143 215-545-1076
 TPW Design Studios 310 Elmwood Boulevard, York, Pennsylvania 17403 717-843-1897

TITLE Eastern Section
DWG NO. E-5



Karakung Park





	EXISTING TRAIL OR FOOTPATH		PHASE I		PHASE II
	PROPOSED TRAIL ALIGNMENT OPTION SEE NARRATIVE FOR DESCRIPTION AND EVALUATION		PHASE III		PHASE IV
	PROPOSED "SHARED ROAD" OPTION SEE NARRATIVE FOR DESCRIPTION AND EVALUATION				

FILE: h:\rad-tini\dwg\1308 map.dwg	DRAWN BY: ZMS/hom
PLOT SCALE: 1" = 1/4 mile	CHECKED BY: RPT
DATE: 11/30/2015	PROJECT NO.: RAD-TINI

Forge to Refuge Trail Feasibility Study
 Radnor Township 301 Iven Avenue Wayne, Pennsylvania 19087-5297

Campbell Thomas & Company 1504 South Street, Philadelphia, PA 19146 215-545-1076
 TPW Design Studios 310 Elmwood Boulevard, York, Pennsylvania 17403 717-843-1897

TITLE	Eastern Section
DWG NO.	E-4

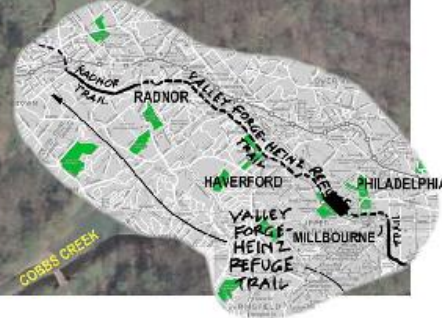




The Grange



D&L Trail Passageway beneath U.S. 13



	EXISTING TRAIL OR FOOTPATH		PHASE I		PHASE II
	PROPOSED TRAIL ALIGNMENT OPTION SEE NARRATIVE FOR DESCRIPTION AND EVALUATION		PHASE III		PHASE IV
	PROPOSED "SHARED ROAD" OPTION SEE NARRATIVE FOR DESCRIPTION AND EVALUATION				

FILE: n:\rad-tin\forge\trase.mxd	DRAWN BY: ZMS/bsm
PLOT SCALE: 1" = 1/4 mile	CHECKED BY: RPT
REVISIONS	REMARKS
DATE	DATE
	11/30/2015
PROJECT NO. RAD-TIN	

Forge to Refuge Trail Feasibility Study

Radnor Township 301 Iven Avenue Wayne, Pennsylvania 19087-5297

Campbell Thomas & Company 1504 South Street, Philadelphia, PA 19146 215-545-1076
 TPW Design Studios 310 Elmwood Boulevard, York, Pennsylvania 17403 717-843-1897

TITLE	Eastern Section
DWG NO.	E-3



	EXISTING TRAIL OR FOOTPATH		PHASE I		PHASE II
	PROPOSED TRAIL ALIGNMENT OPTION SEE NARRATIVE FOR DESCRIPTION AND EVALUATION		PHASE III		PHASE IV
	PROPOSED "SHARED-ROAD" OPTION SEE NARRATIVE FOR DESCRIPTION AND EVALUATION				

FILE: n:\rad-tin\forge\trase.mxd	DRAWN BY: ZMS/bsm
PLOT SCALE: 1" = 1/4 mile	CHECKED BY: RPT
REVISIONS	DATE
	11/30/2015
	PROJECT NO. RAD-TIN

Forge to Refuge Trail Feasibility Study
 Radnor Township 301 Iven Avenue Wayne, Pennsylvania 19087-5297
 Campbell Thomas & Company 1504 South Street, Philadelphia, PA 19146 215-545-1076
 TPW Design Studios 310 Elmwood Boulevard, York, Pennsylvania 17403 717-843-1897

TITLE: Eastern Section
 DWG NO.: E-2



Pennington Rd

N 76th St

Brockton Rd

Farrington Rd

Brockton Rd

... Ave

PROPERTY LINE APPROX. 65 FEET FROM BACK OF HOUSES

PROPERTY LINE APPROX. 40 FEET FROM BACK OF HOUSES





	EXISTING TRAIL OR FOOTPATH		PHASE I		PHASE II
	PROPOSED TRAIL ALIGNMENT OPTION SEE NARRATIVE FOR DESCRIPTION AND EVALUATION		PHASE III		PHASE IV
	PROPOSED "SHARED ROAD" OPTION SEE NARRATIVE FOR DESCRIPTION AND EVALUATION				

FILE: n:\rad-tin\forge\trase.mxd	DRAWN BY: ZMS/bsm
PLOT SCALE: 1" = 1/4 mile	CHECKED BY: RPT
REVISIONS	DATE
	11/30/2015
PROJECT NO. RAD-TIN	

Forge to Refuge Trail Feasibility Study

Radnor Township 301 Iven Avenue Wayne, Pennsylvania 19087-5297

Campbell Thomas & Company 1534 South Street, Philadelphia, PA 19146 215-545-1076
 TPW Design Studios 310 Elmwood Boulevard, York, Pennsylvania 17403 717-843-1897

TITLE	Eastern Section
DWG. NO.	E-1



Haddington Woods Restoration



Millbourne Station

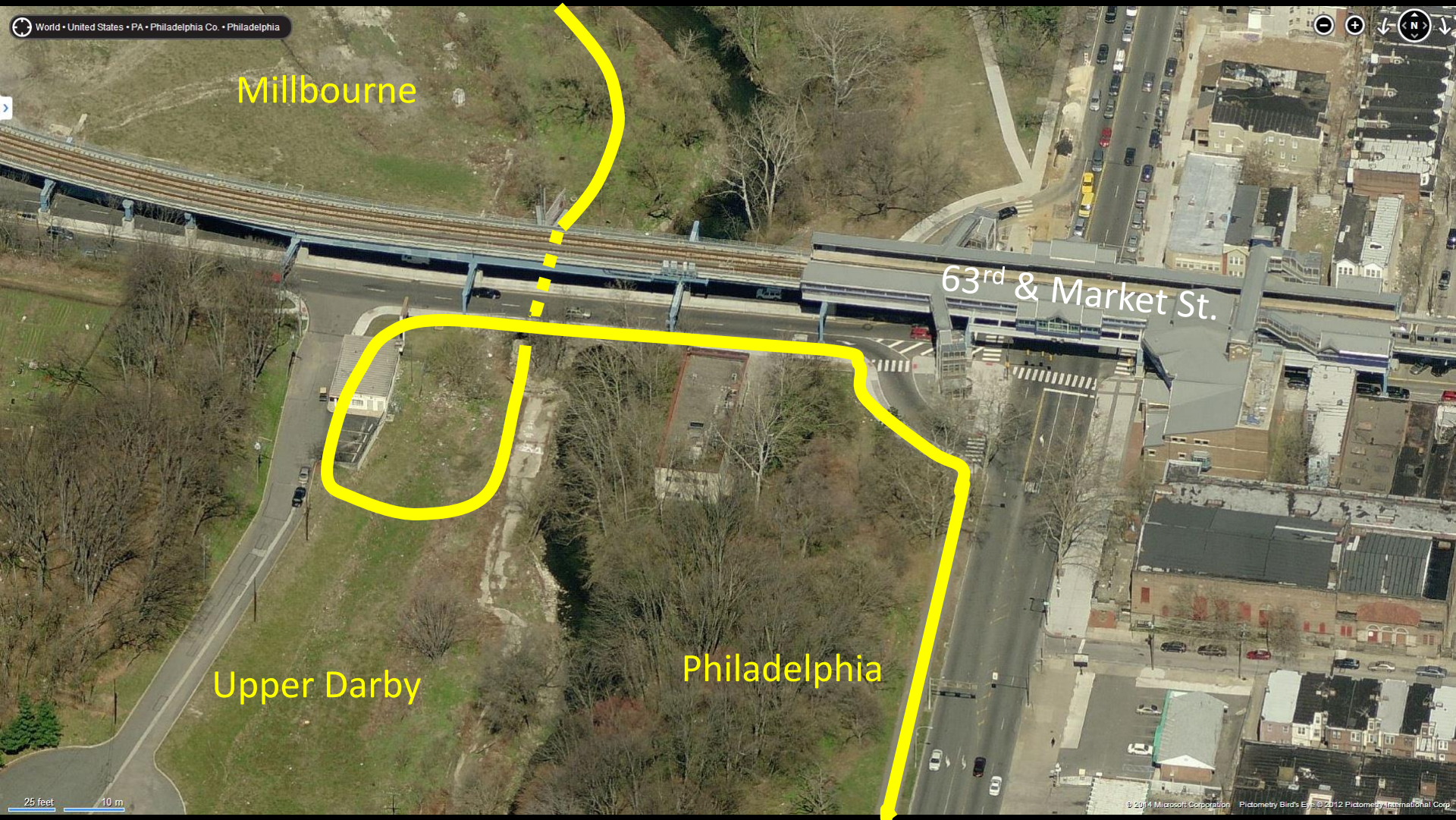


Millbourne

63rd & Market St.

Upper Darby

Philadelphia

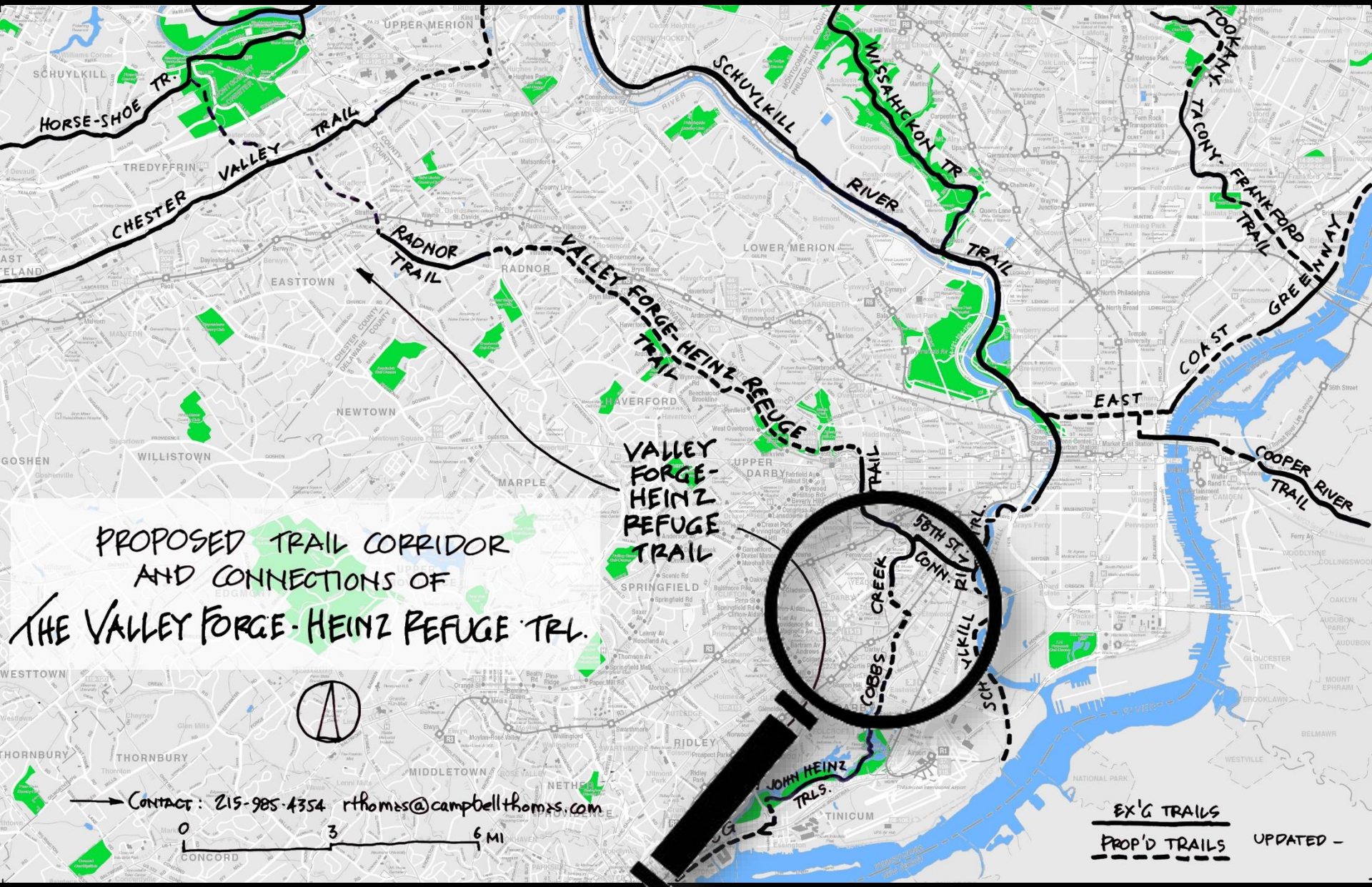




Tunnel Beneath Market St.



Cobbs Creek Trail



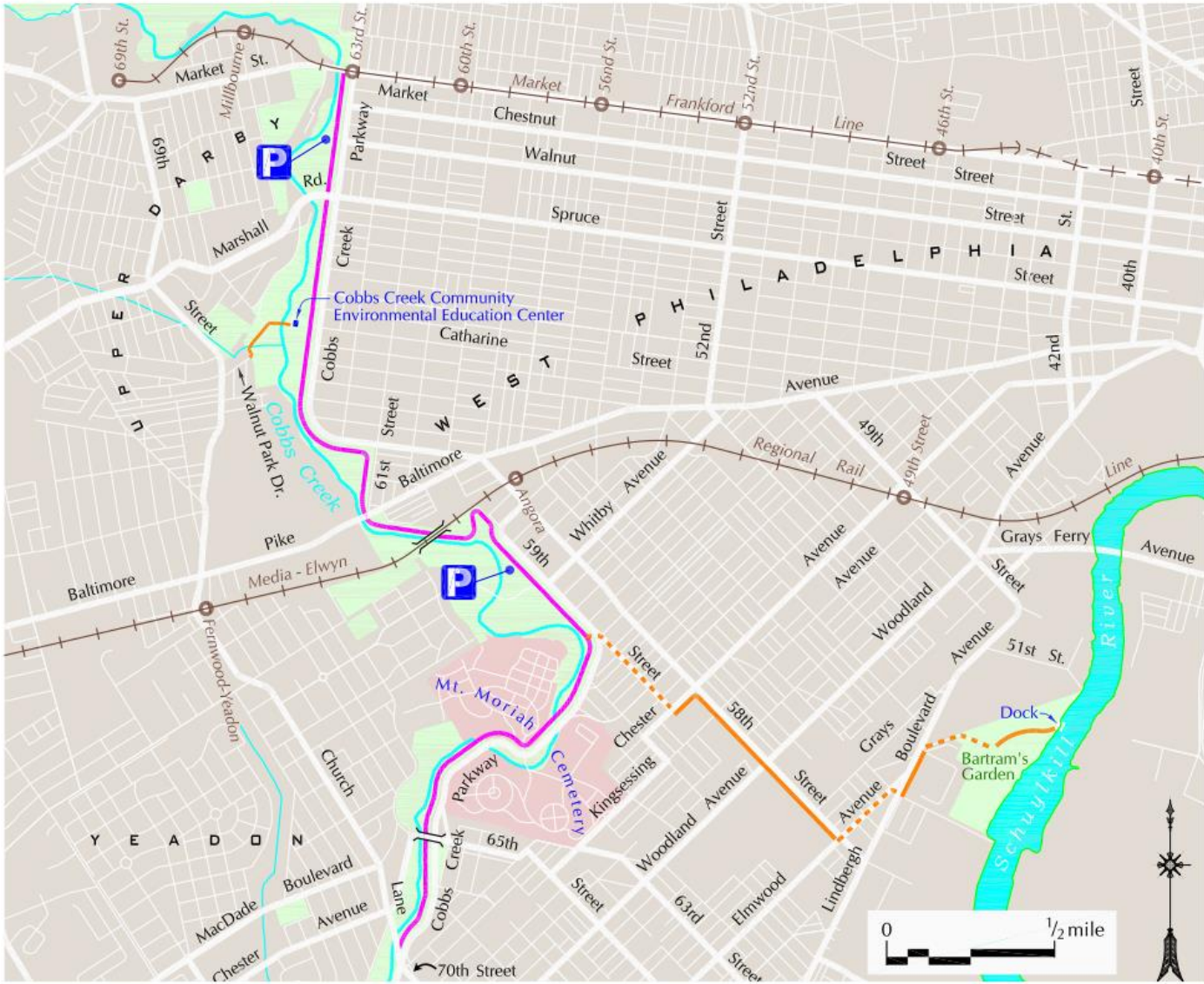
PROPOSED TRAIL CORRIDOR
AND CONNECTIONS OF
THE VALLEY FORGE-HEINZ REFUGE TRAIL.

VALLEY FORGE-HEINZ REFUGE TRAIL

CONTACT: 215-985-4354 rthomas@campbellthomas.com



EX'G TRAILS
PROP'D TRAILS UPDATED -



COBBS CREEK TRAIL

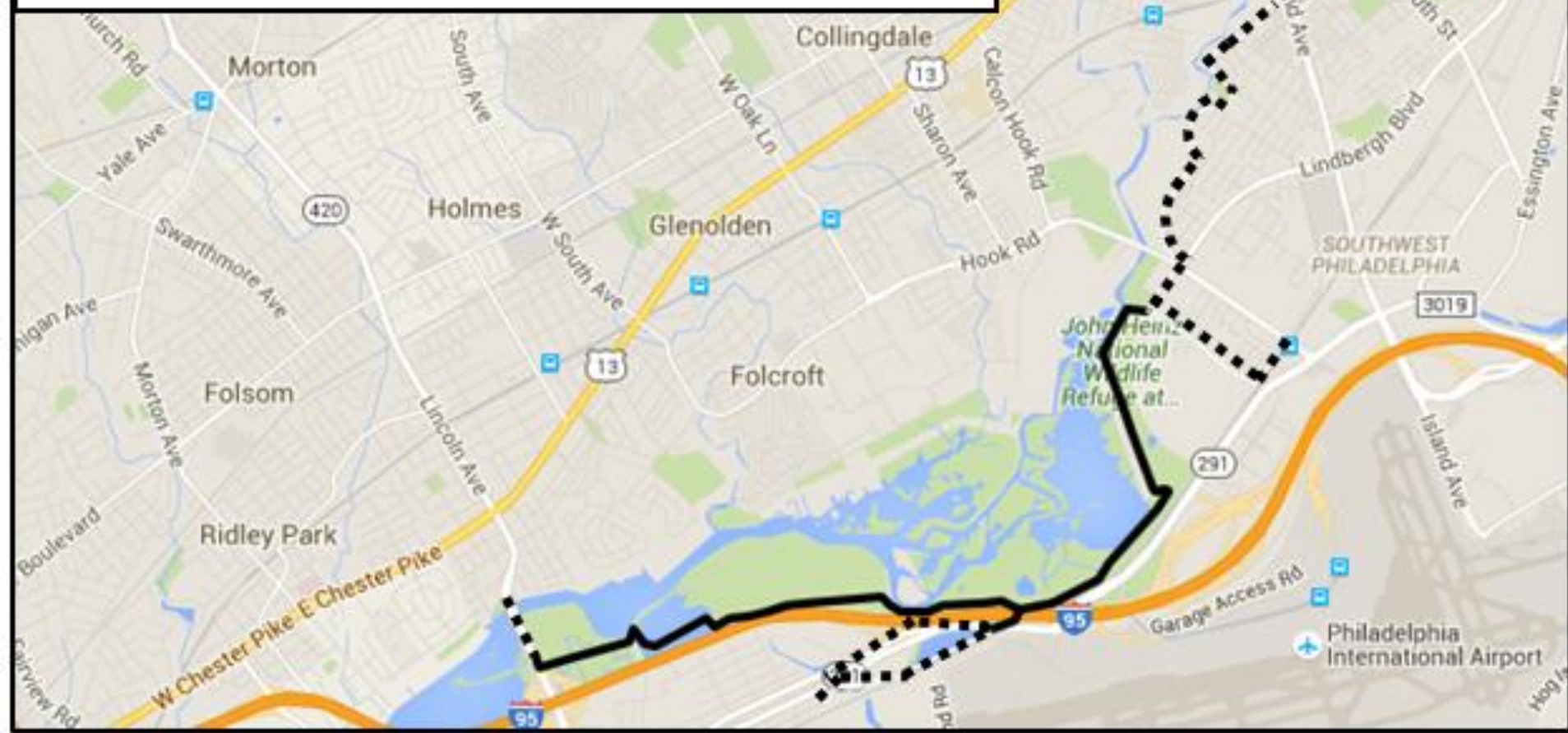
EAST COAST GREENWAY

Philadelphia and Delaware Co, PA



GREATER PHILADELPHIA AREA TRAIL NETWORK

- Proposed Trails
- Existing Trails





Valley Forge to.....

.....Heinz Refuge

