

Regional Trail Summit



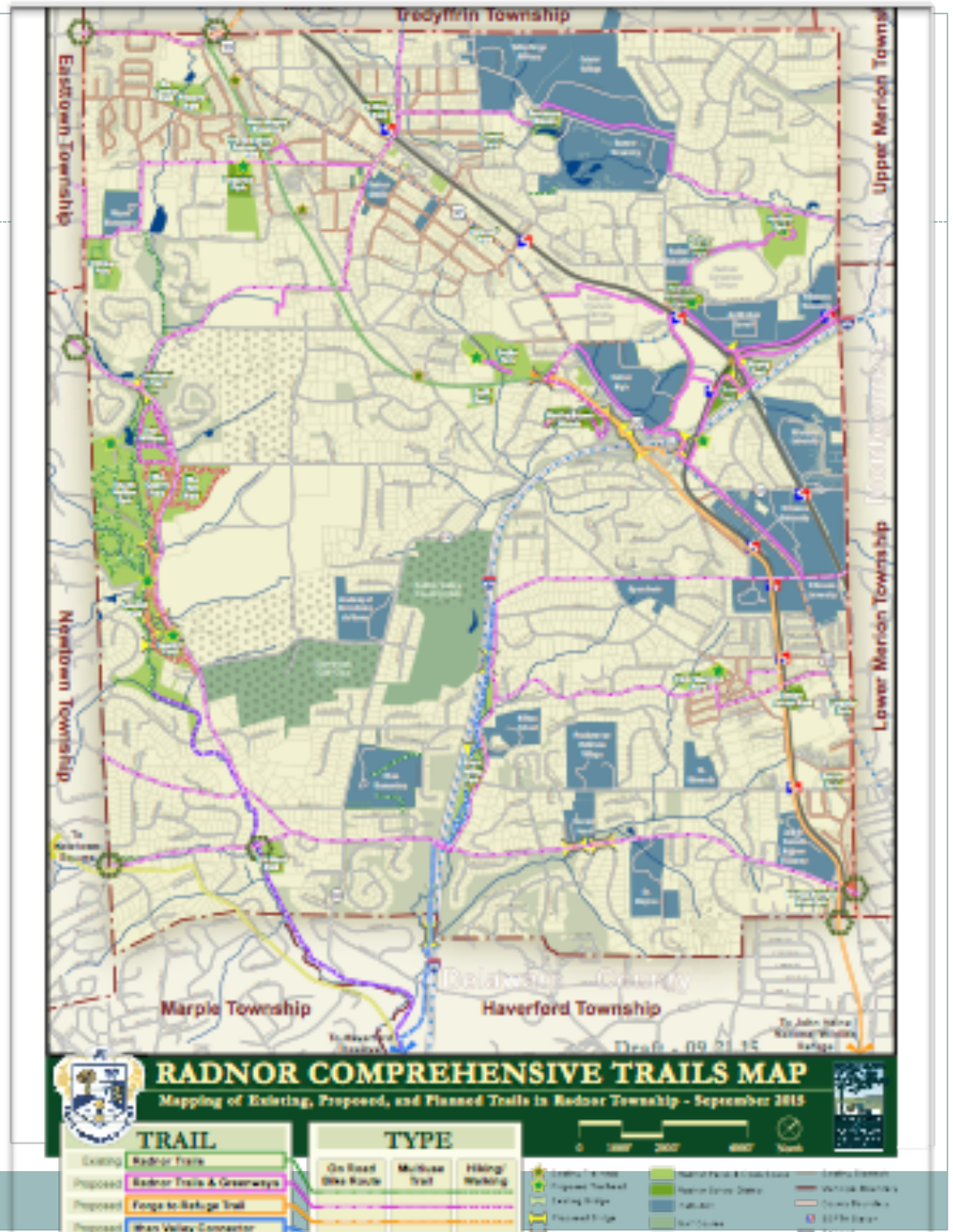
FEBRUARY 9, 2019

**GRETCHEN GROEBEL & LAURA LUKER
RADNOR CONSERVANCY**

**RADNOR TOWNSHIP
TRAIL PROJECTS**

Radnor Comprehensive Trails Map

- From the *Greenways & Open Space Network Plan* came a **Comprehensive Trails Map** (adopted in 2015)
- 4 major trail projects were identified and prioritized.



4 Trail Projects



1. Radnor Train Station to Harford Park

2. TAP Trails (3 Segments)

-West Wayne Ave to the Radnor Trail

- Penn Medicine / Radnor High School Spoke

-Villanova Univ. to Ithan Valley Park to Haverford Reserve.

3. Darby Paoli Multi-Use Park Trail (formerly Ardrossan Park Trail)

4. Radnor Extension Trail

Radnor Train Station to Harford Park



- Connects R5 Regional Rail passengers to Radnor Corporate Center, Main Line School Night and Harford Park (approx .25 mile).
- **Meliora Design (Michele Adams, Project Engineer)**
- **Status:** Waiting on comments re: design from Brandywine Realty Trust. Working with BRT to obtain easements
- Design is 80% complete
- Funded by Township Bond approx \$250K



TAP Trails

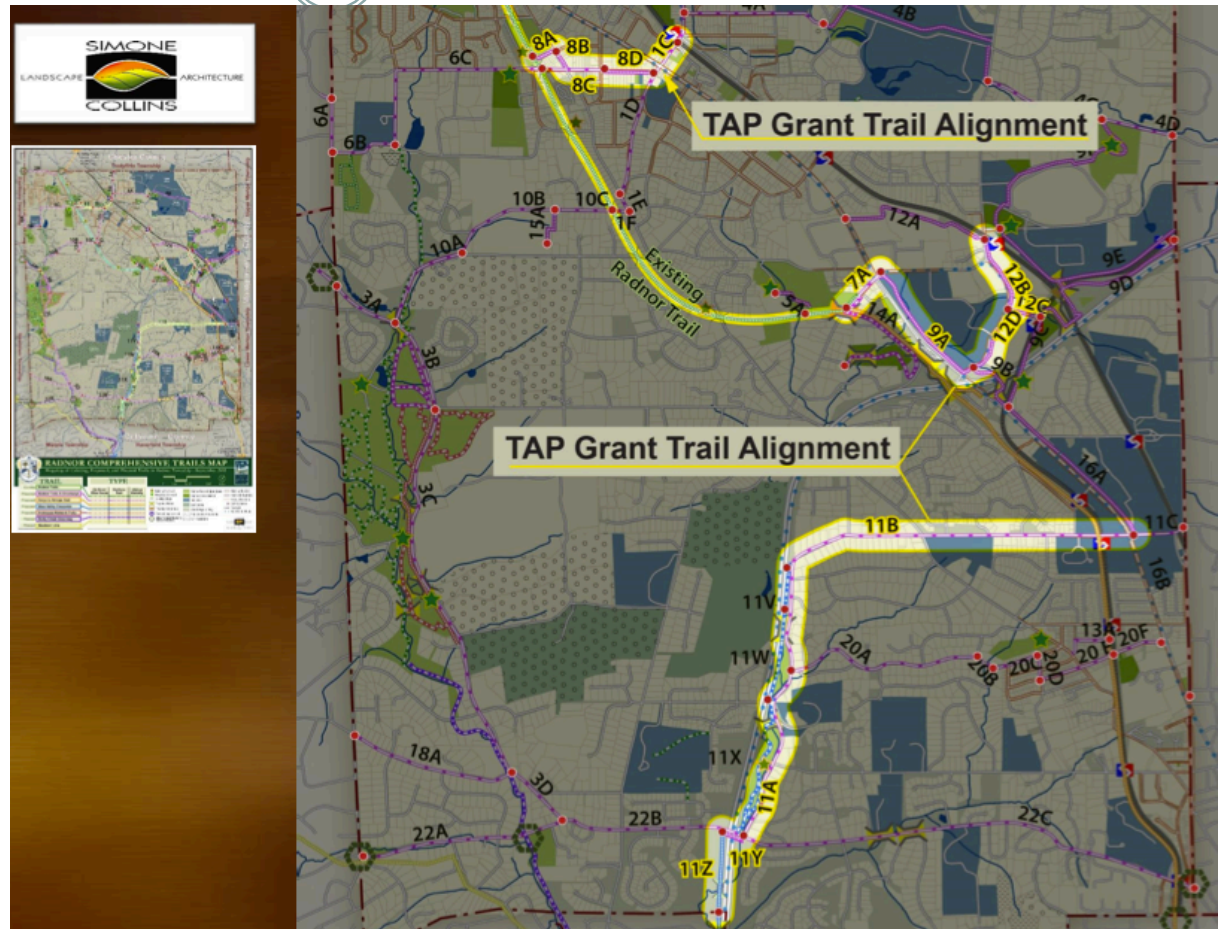
- 3 Segments

- West Wayne Ave to Radnor Trail

- Penn Medicine / Radnor High School Spoke

- Villanova Univ. to Ithan Valley Park to Haverford Reserve.

- In PennDOT Safety Review



TAP Grant Trail Alignments (3)

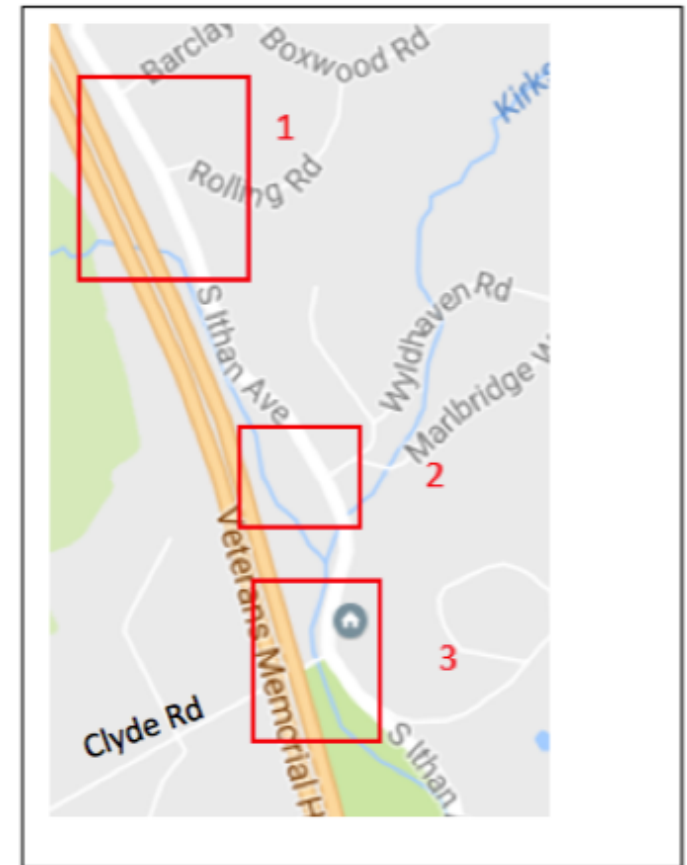


- **West Wayne Connector** will connect downtown Wayne to the Radnor Trail.
- **Penn Medicine / Radnor High School Spoke** corner of RT 30 & Radnor Chester Rd (paralleling High School & KOP Rd. Up KOP Rd. to Radnor Train Station)
- **The Villanova Univ. Spur Trail on Rt.30** along the length of Villanova's campus will connect to Ithan Ave then to Ithan Valley Park extending to Haverford Township. These spurs and connections are part the greater Greenways Open Space Plan.
- **Consultant:** Simone Collins Landscape Architects
- **Status:** Design in final stages, meeting with School District and PENDOT. Solicit sealed bids for construction.
- **Funding:** Grants awarded 2017 (TAP, DCNR, DCED)

Ithan Valley Park – Walking Trails

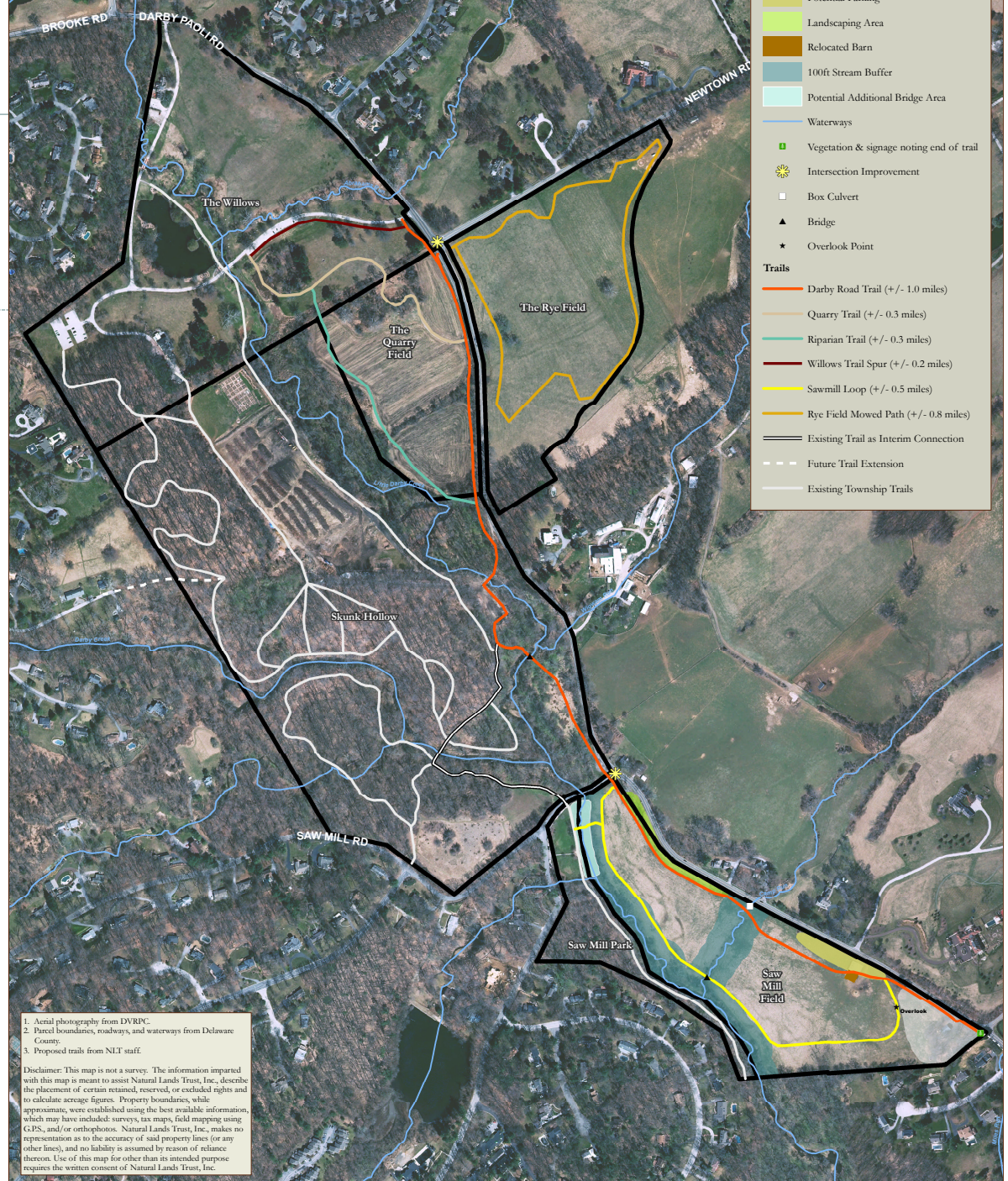


- North Section of Ithan Valley Park encompasses 7 acres of land along Rt 476 with Ithan Creek bisecting it.
- Design by Simone Collins
- 1. Entrance at Barclay Rd. stop sign with trail running south to point where Ithan Creek enters from tunnel under Rt 476, requiring a creek crossing. Trail continues south towards Clyde Rd.
- 2. Entrance at Wyldhaven Rd. -trail running westerly to creek, requiring a crossing, then trail links to the north-south trail.
- 3. Trail running south crossing Clyde Road, continuing into the park
- Status: Preliminary Design, Working with Simone Collins and PennDOT



Darby Paoli Multi-use Trail

- **The Darby Paoli Multi-use Trail** will connect Willows Park through Skunk Hollow and continue along Darby Paoli Rd. In the future, connect to Bryn Mawr Ave.
- **Consultant:** Preliminary design by **Natural Lands. Project Engineer, Michele Adams Meliora Design.**
- **Status:** Surveying for wetlands and bridges completed, wetland delineation completed, site walks, preliminary layouts completed, public meetings at Township.
- Stephen Giampaolo of McMahon Transportation Engineers are sub consultants
- Design and permitting are funded.
- Needs grants funding.



Radnor Trail Extension

- Trail extension will go under Radnor Chester Rd and extend $\frac{3}{4}$ mile further east to the Blue Route (476). This extension is proposed in the future to link with the SEPTA 100 trail which is part of The Circuit Trails- Also known as Valley Forge To Heinz Refuge Trail.
- **Consultant:** Bob Thomas of Campbell Thomas & Co.
- **Sub-consultants:** Kee Landscaping and Gilmore Associates Engineers.
- **Status:** Design and Engineering for phase 1 complete.
- **Funding:** \$500K from bond, Received \$50k from the DCED/CFA 2018 Grant, working on additional grants.

