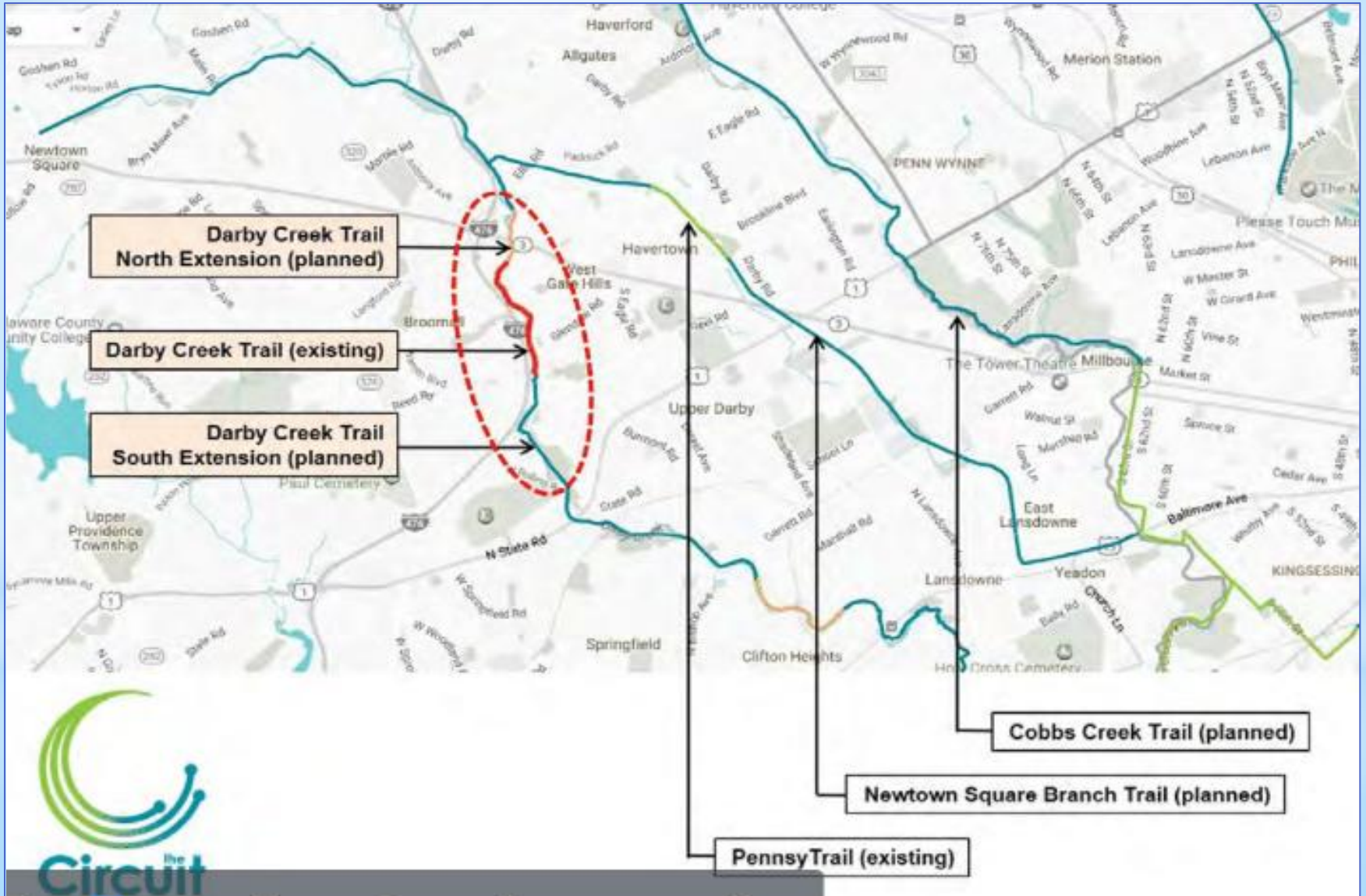

Haverford Township Trail Projects Update

Tim Denny

Assistant Township Manager and
Director of Parks and Recreation
Haverford Township

2019 Western Suburbs Trail Summit
February 9, 2019

Circuit Trails in Haverford Twp.



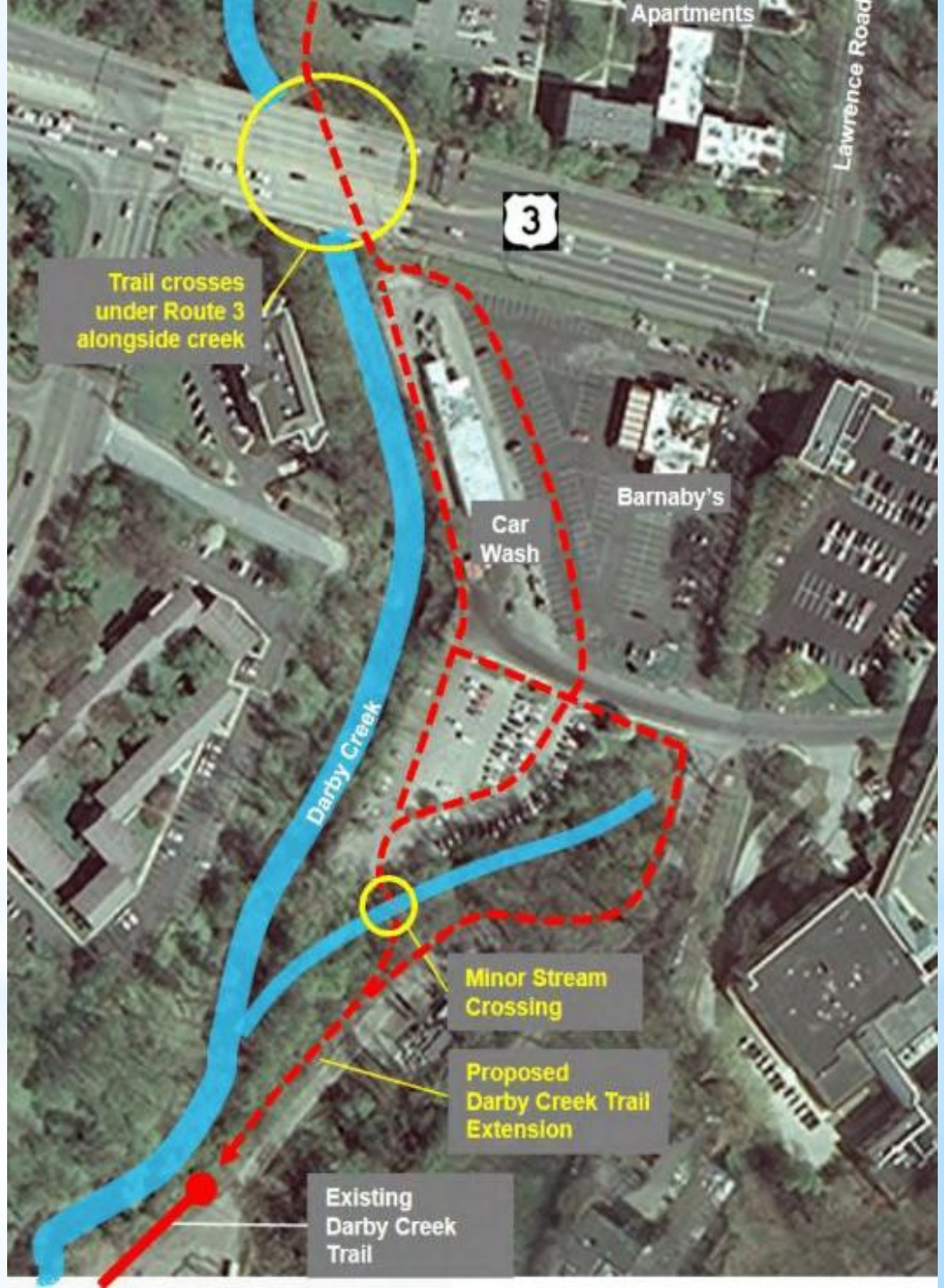


The Darby Creek Trail Extension Feasibility Study is now completed. It explores extending Haverford's section north 1 mile to Haverford Reserve, and also south 1 mile to Upper Darby Township (Circuit Trail).

Darby Creek Trail



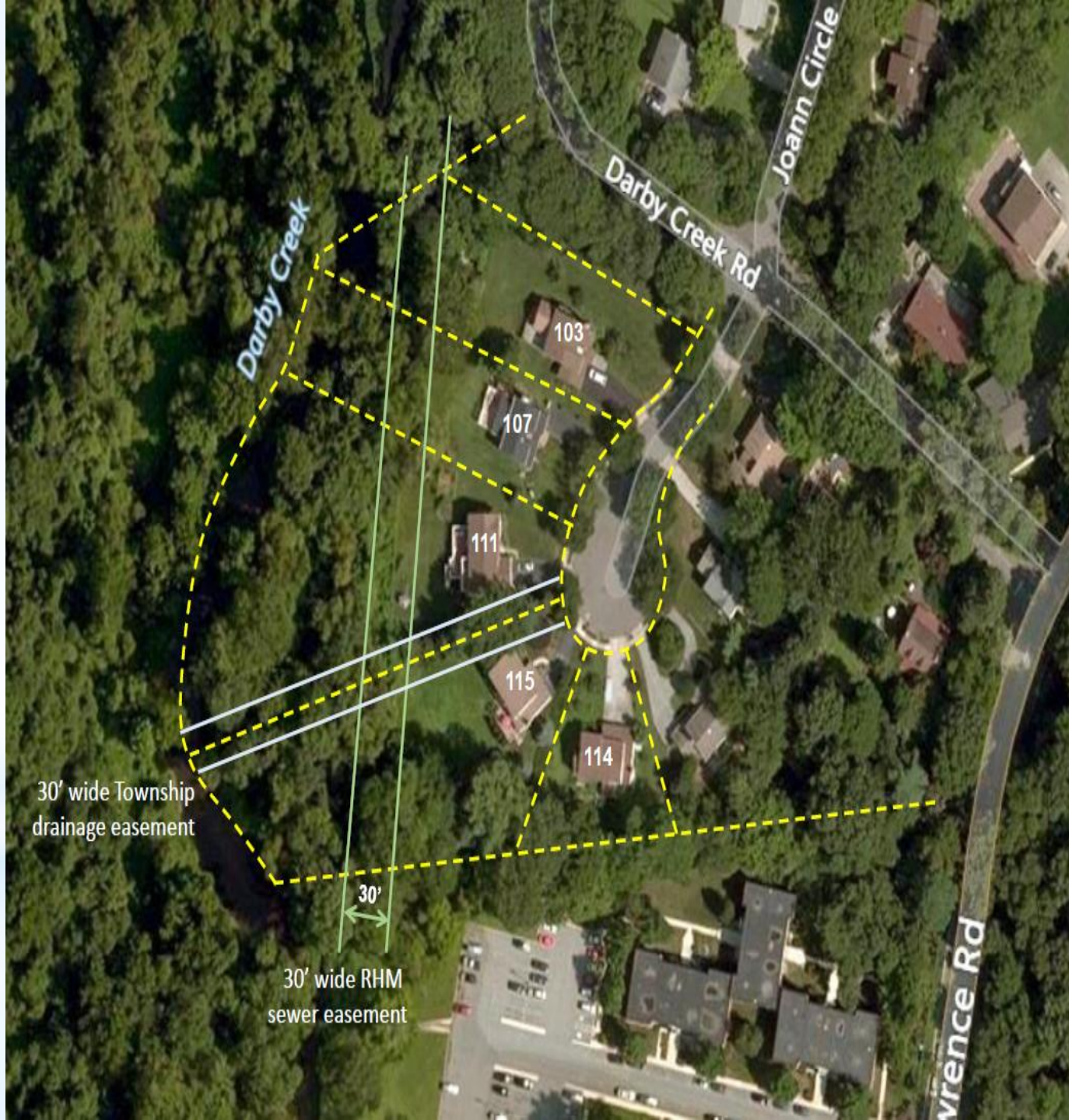
Pinch Points



Under Rte. 3 - West Chester Pike



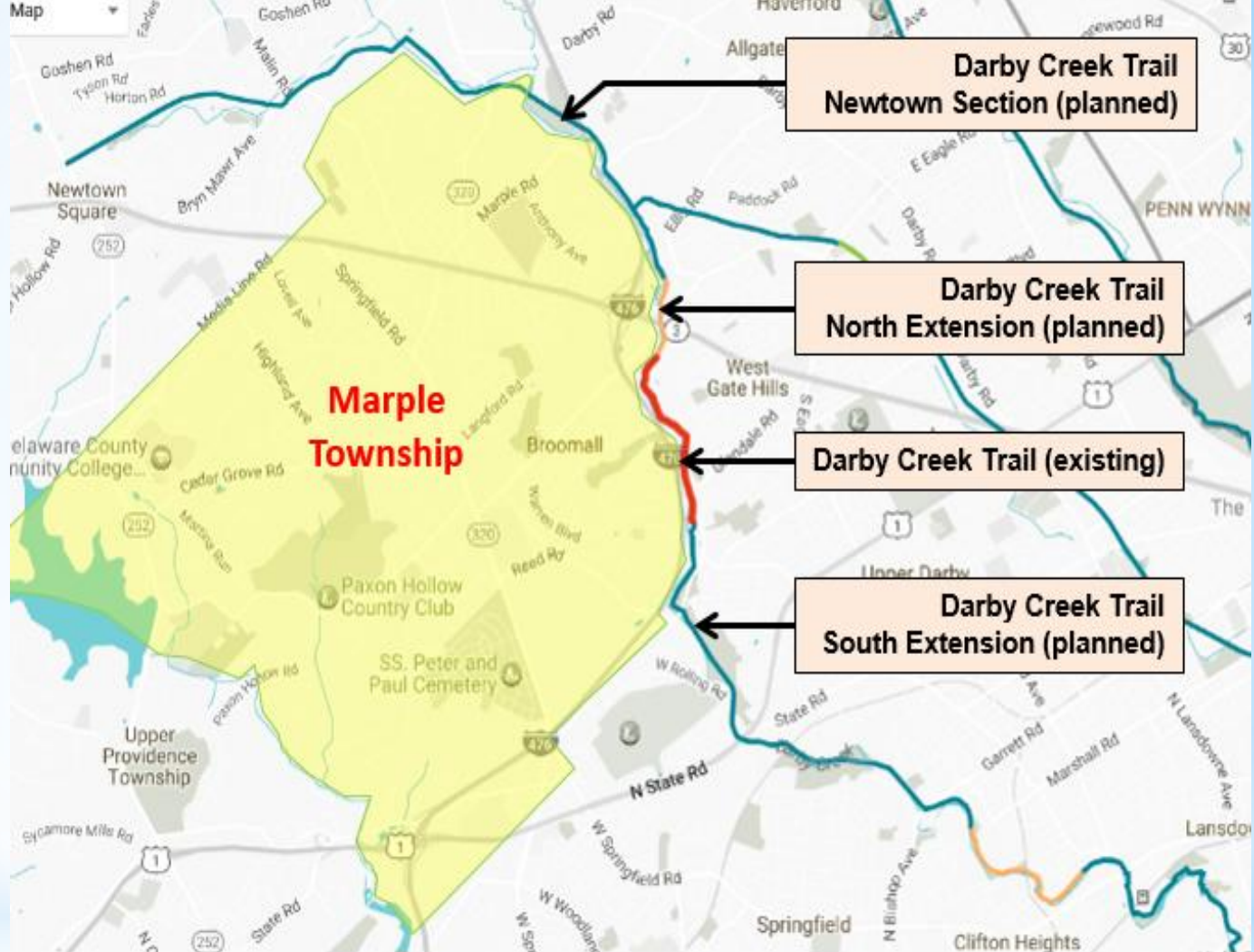
Homes on Waterview



30' wide Township
drainage easement

30' wide RHM
sewer easement

Marple Trail Study

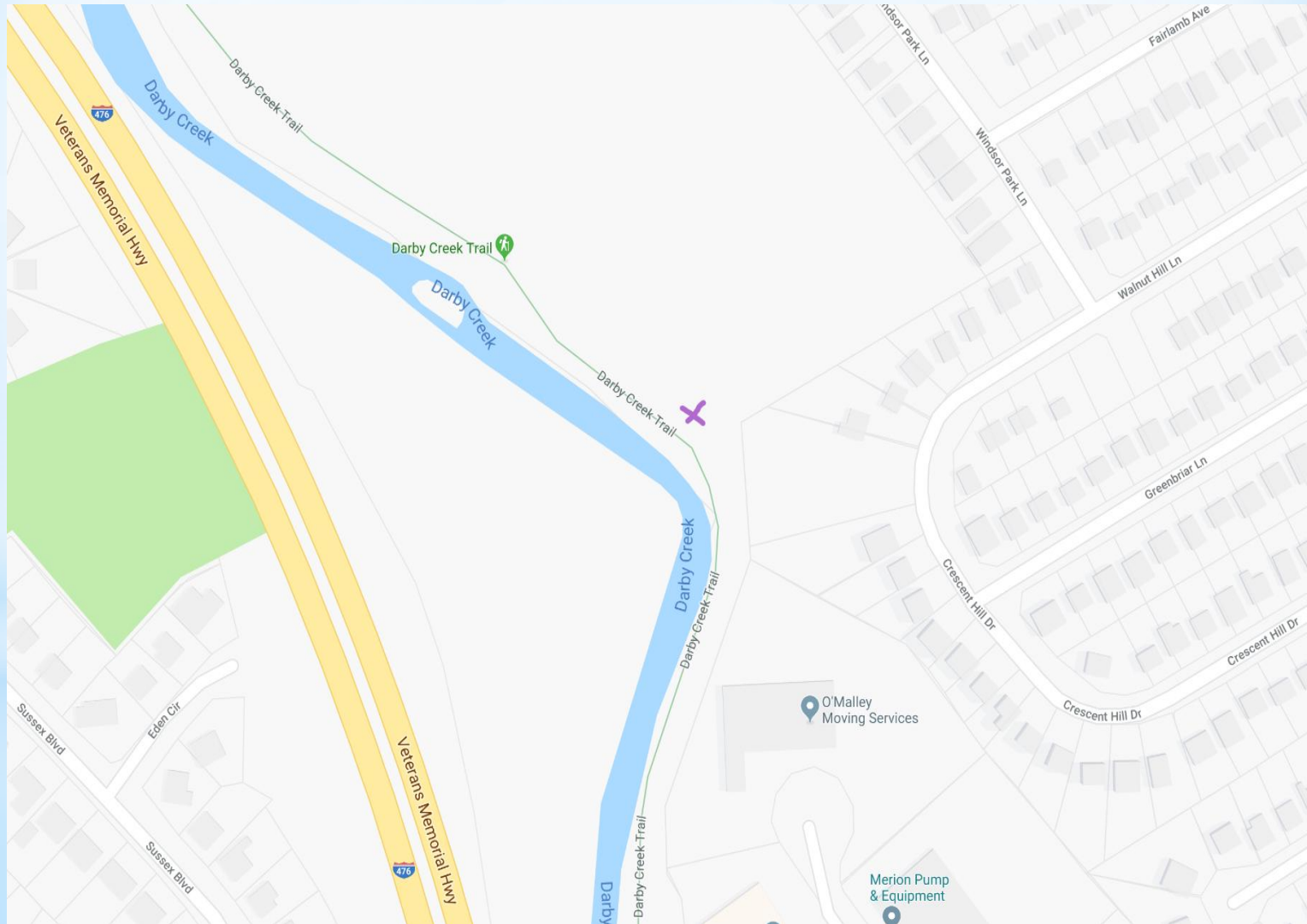


Marple Township – proximity to Circuit planned

Bridge over Darby Creek







Westgate Connector Trail



South



Property Ownership

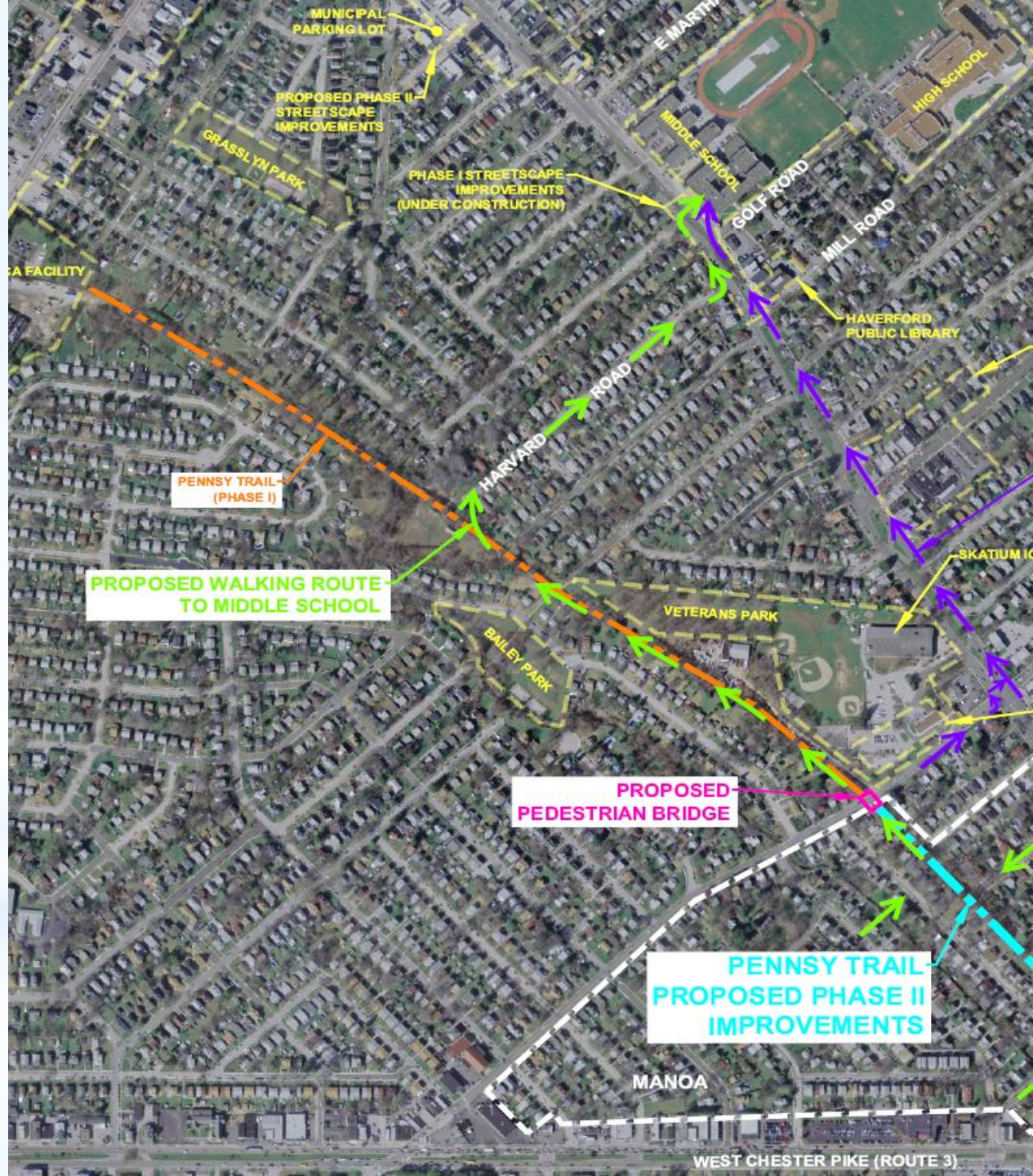
-  Haverford Township
-  Sewer Authority
-  PennDOT
-  Private Residence

Upper Darby Township's study for the segment directly south of here is also now completed.

Southward Extension of Pennsy Trail

- The “Pennsy Trail” is Haverford’s portion of the old Pennsylvania Railroad Newtown Square Branch local rail line.
- Grant in hand to extend south on new bridge over Manoa Road into Haverford’s Llanerch section. Design is underway.
- One of three envisioned Circuit Trails running through Haverford Township, this one through the populated center.
- Upper Darby Township’s “Naylor’s Run” trail feasibility study has been previously completed.

PENNSY Trail Extension



Manoa Road Bridge



**PENNSY TRAIL
(PHASE I)**



**2019 marks 10 years of trails in Haverford Township
It Started with the Haverford Reserve!**

Haverford Reserve Trails



Today, all Haverford Township residents live within a mile of a walking trail.

