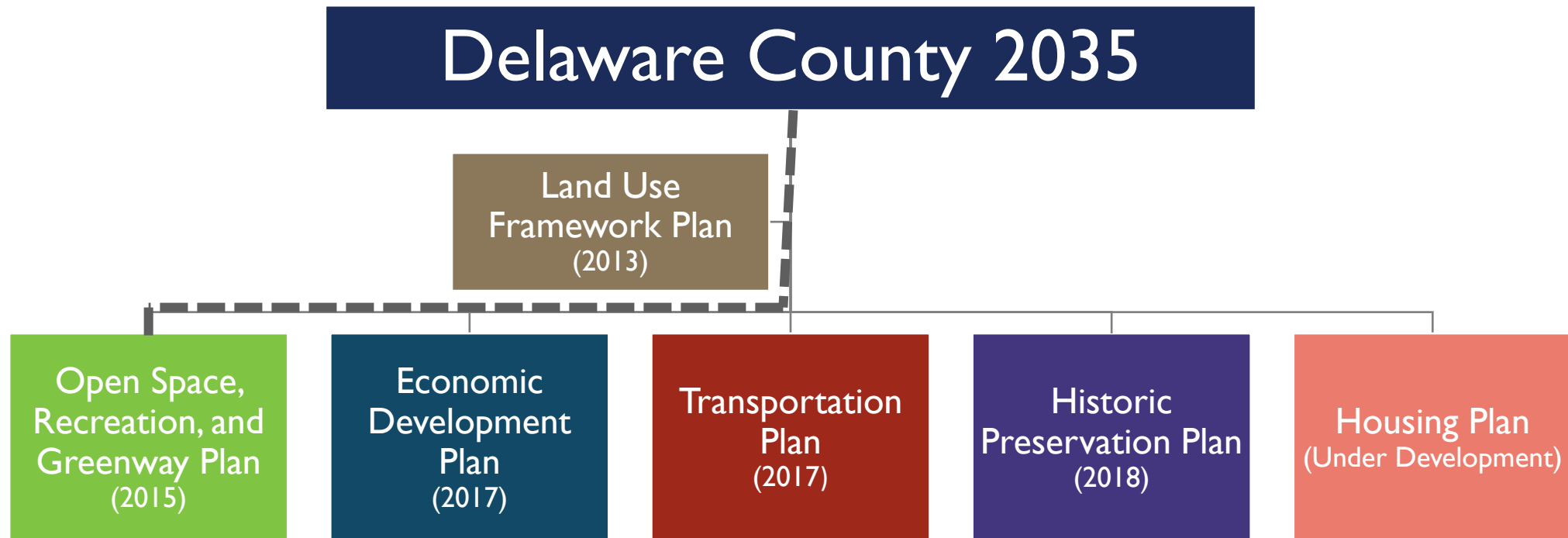


# Delaware County Trail Planning & Development Update

Philadelphia Western Suburbs Trail Summit  
February 9, 2019

Steve Beckley  
Delaware County Planning Department  
[www.delcopa.gov/planning](http://www.delcopa.gov/planning)

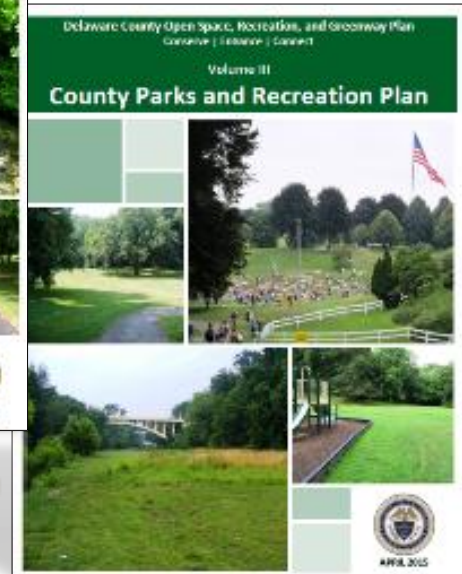
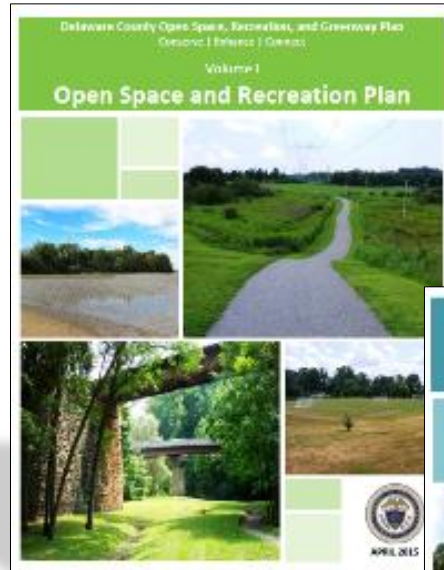




# OPEN SPACE, RECREATION, AND GREENWAY PLAN



**Adopted  
April 22,  
2015**



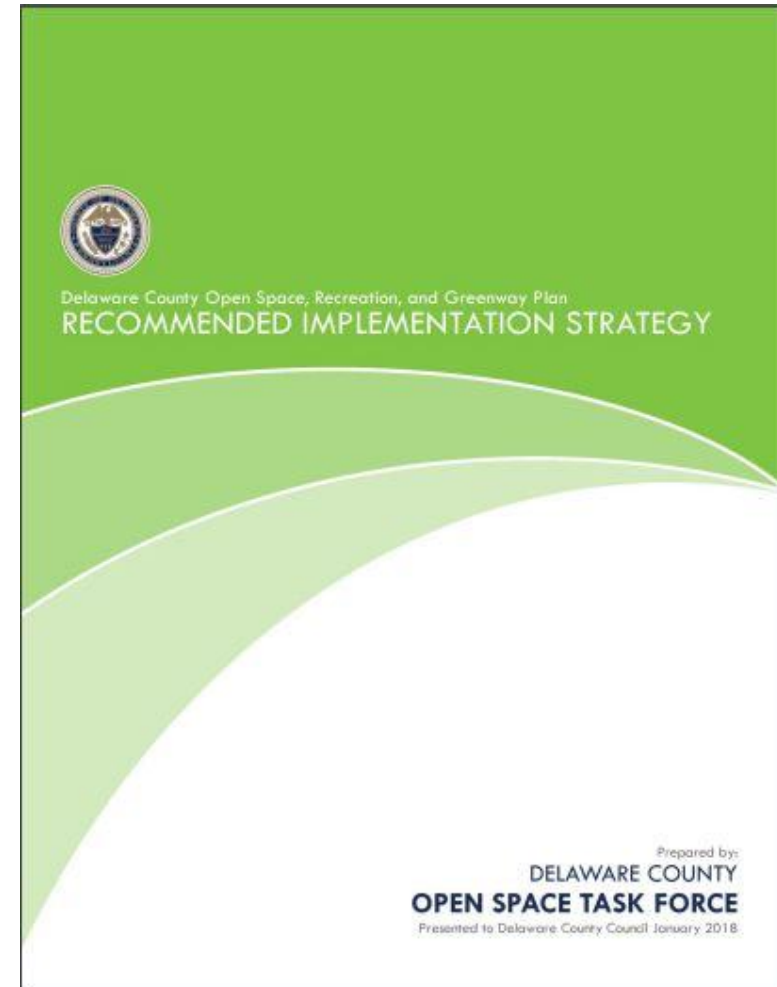
**Goals:**

**CONSERVE – ENHANCE – CONNECT**

## OPEN SPACE TASK FORCE:

### OSRGP Recommended Implementation Strategy (Approved 9/12/18 by County Council)

- **Funded by \$10 Million Bond**  
(Approved 10/17/18 by County Council)
- Funding for Municipal Projects  
Subject to Eligibility Requirements  
and 10% Local Match



For details, visit: [www.co.delaware.pa.us/planning/](http://www.co.delaware.pa.us/planning/)

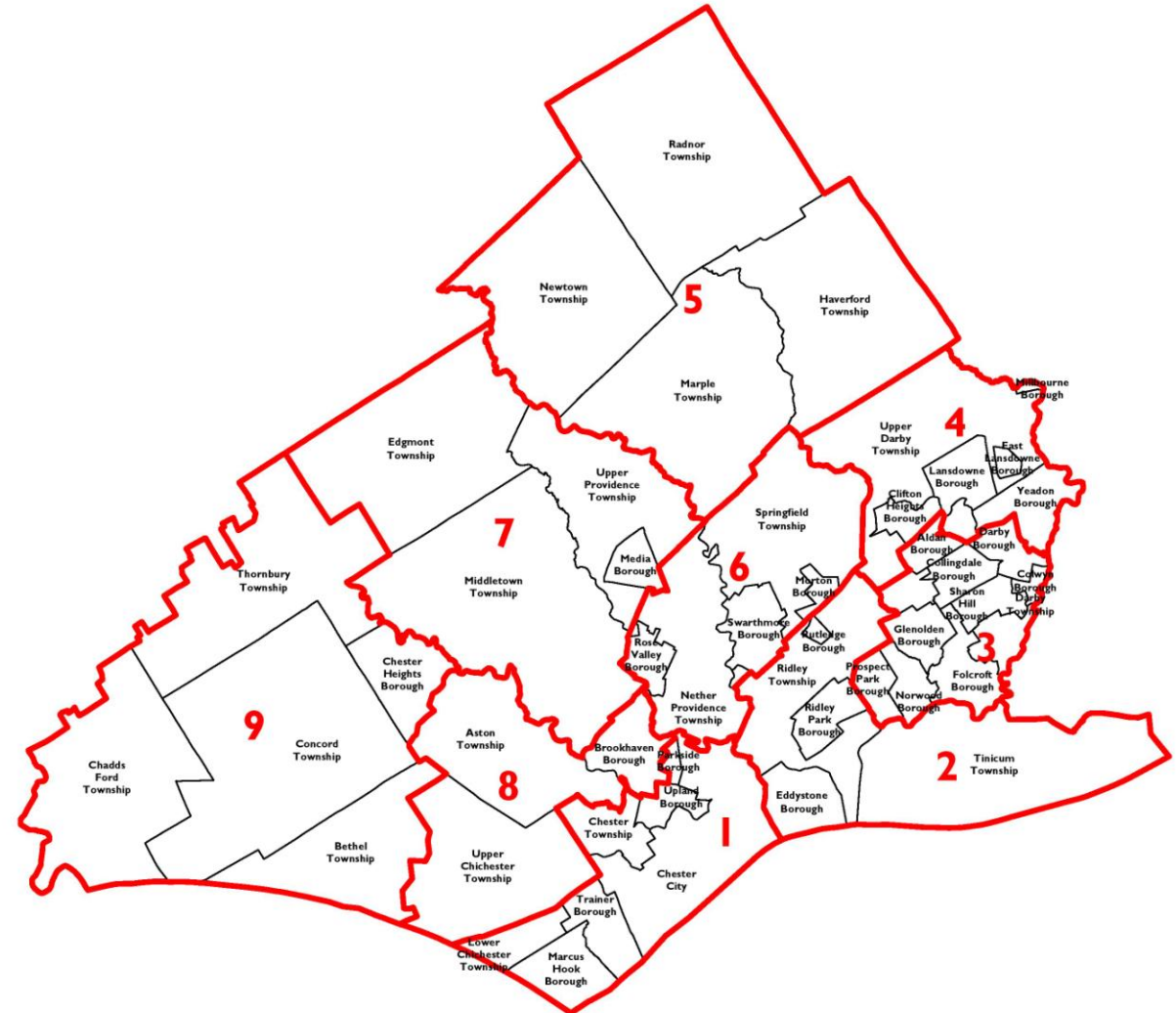
## OPEN SPACE TASK FORCE STRATEGY & FUNDING

Investment Categories Include:

- Grants to Municipalities
- Multi-Municipal Open Space Action Plans
- Investment in County-Owned Park System

Eligible Projects:

- Open Space Preservation (CONSERVE),
- Park Devel./Regreening (ENHANCE),
- **Multi-Use Trails Development (CONNECT)**
- Professional Services Support (Plans, Studies, Engineering)



For more details visit: [www.delcopa.gov/planning](http://www.delcopa.gov/planning)

# DELAWARE COUNTY

## PRIMARY TRAIL NETWORK

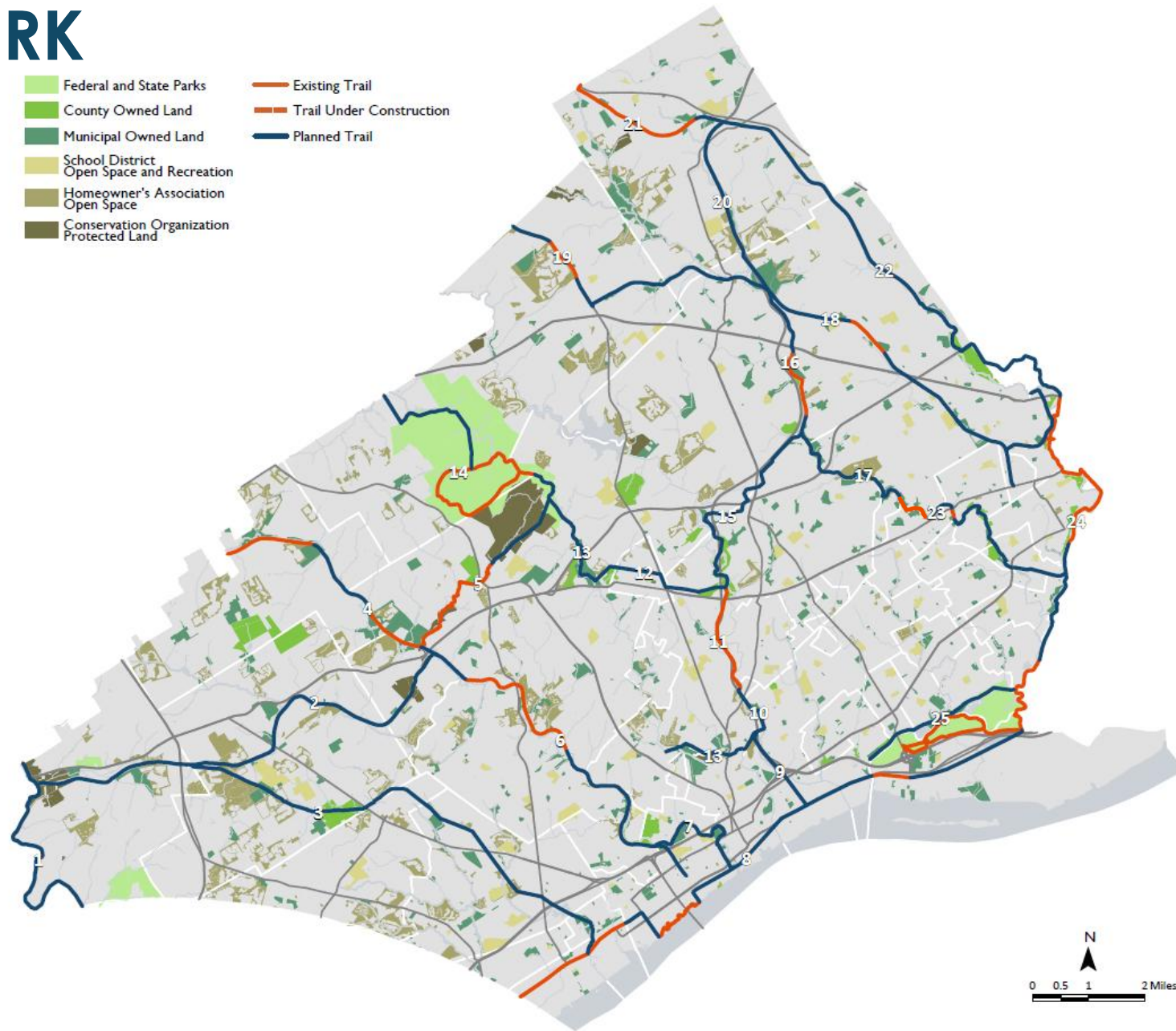


### 130 Miles of Trails

Existing: 36 Miles

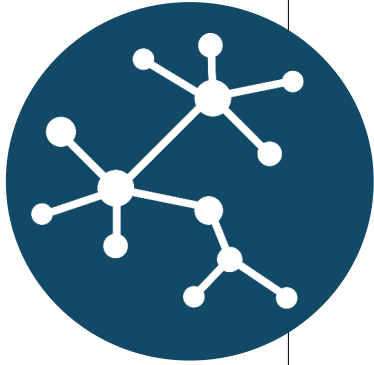
Planned: 94 miles

Plus over 100 mile of existing local trails



# DELAWARE COUNTY

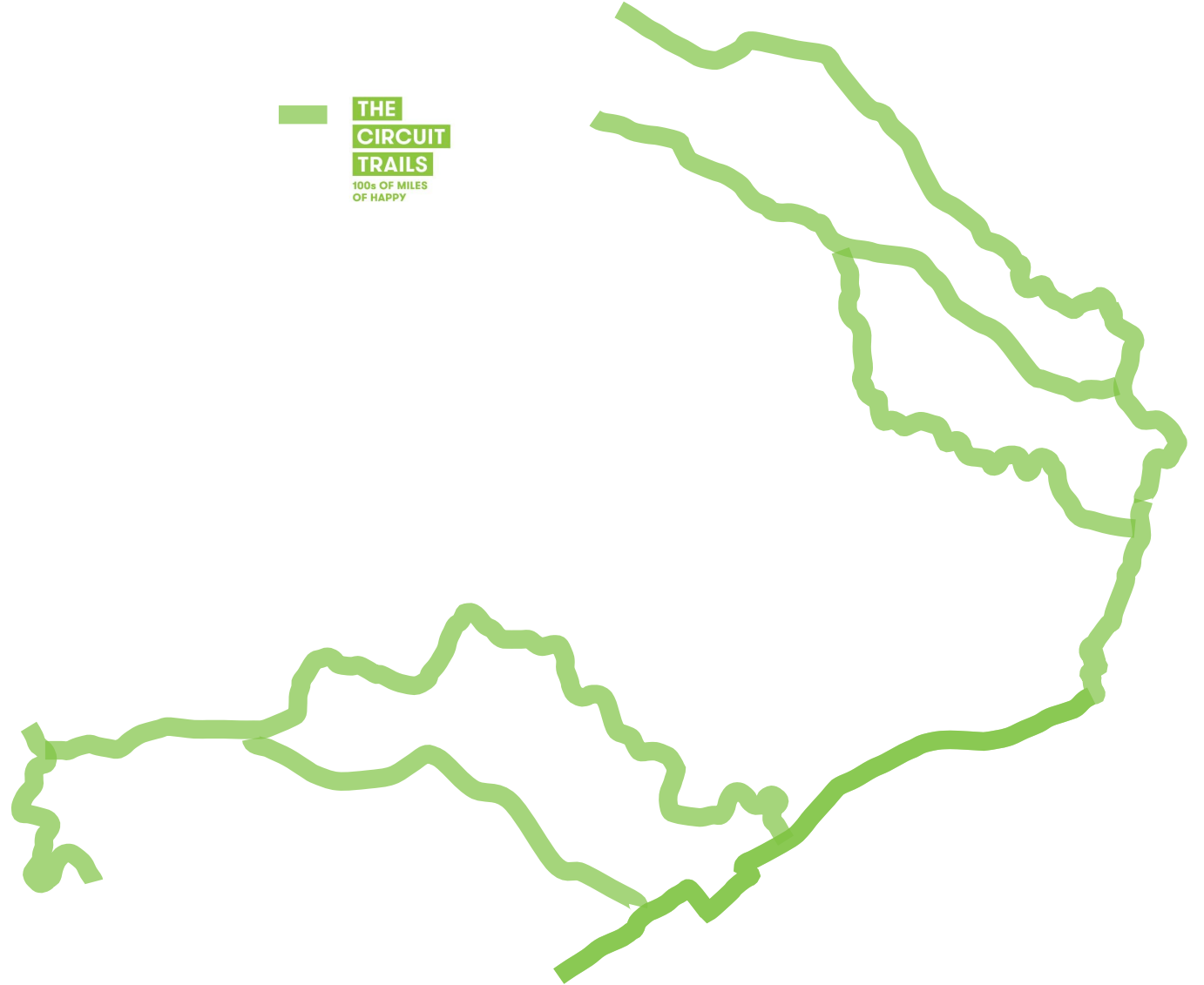
## PRIMARY TRAIL NETWORK



**THE  
CIRCUIT  
TRAILS**

100s OF MILES  
OF HAPPY

**THE  
CIRCUIT  
TRAILS**  
100s OF MILES  
OF HAPPY



# OPEN SPACE, RECREATION, AND GREENWAY PLAN

## PRIMARY TRAIL NETWORK



- Federal and State Parks
- County Owned Land
- Municipal Owned Land
- School District Open Space and Recreation
- Homeowner's Association Open Space
- Conservation Organization Protected Land
- Existing Trail
- Trail Under Construction
- Planned Trail

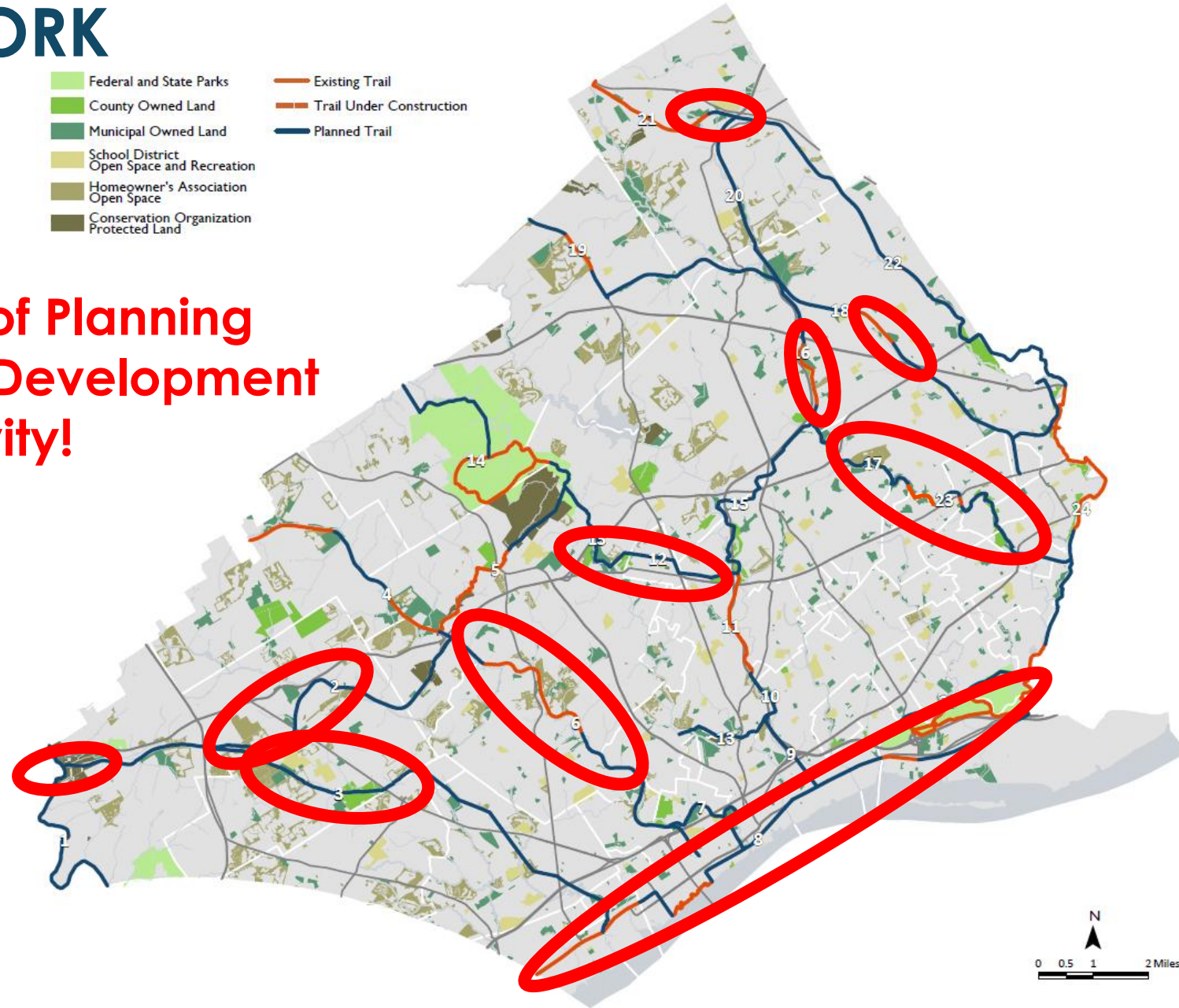
**Lots of Planning and Development Activity!**

**130 Miles of Trails**

Existing: 36 Miles

Planned: 94 miles

Plus over 100 mile of existing local trails





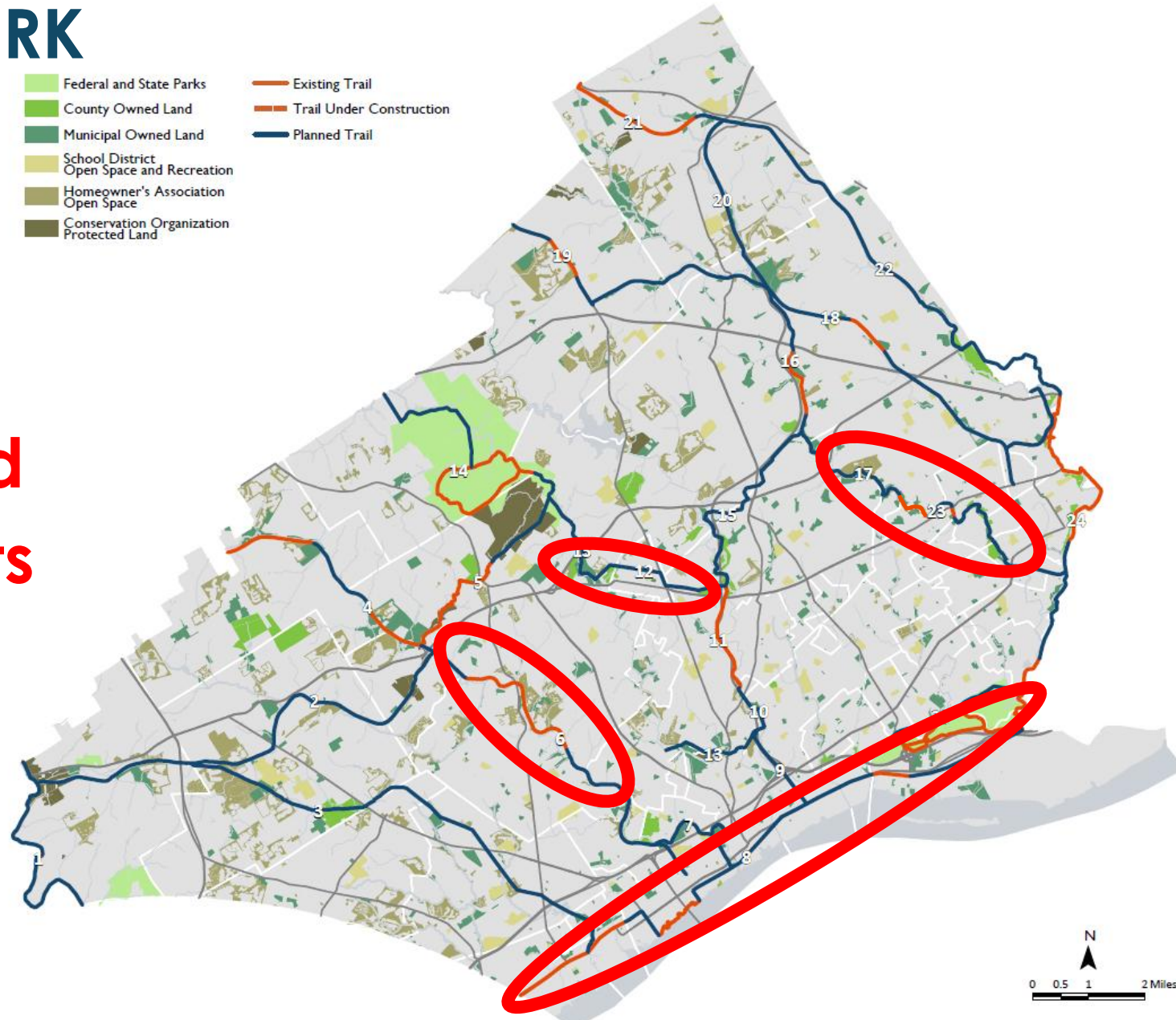
# DELAWARE COUNTY

## PRIMARY TRAIL NETWORK



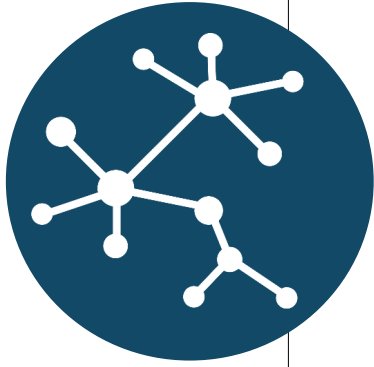
### Current County-Led Trail Projects

- Chester Creek Trail
- Darby Creek Trail
- East Coast Greenway
- Media-Smedley Connector Trail



# CHESTER CREEK TRAIL

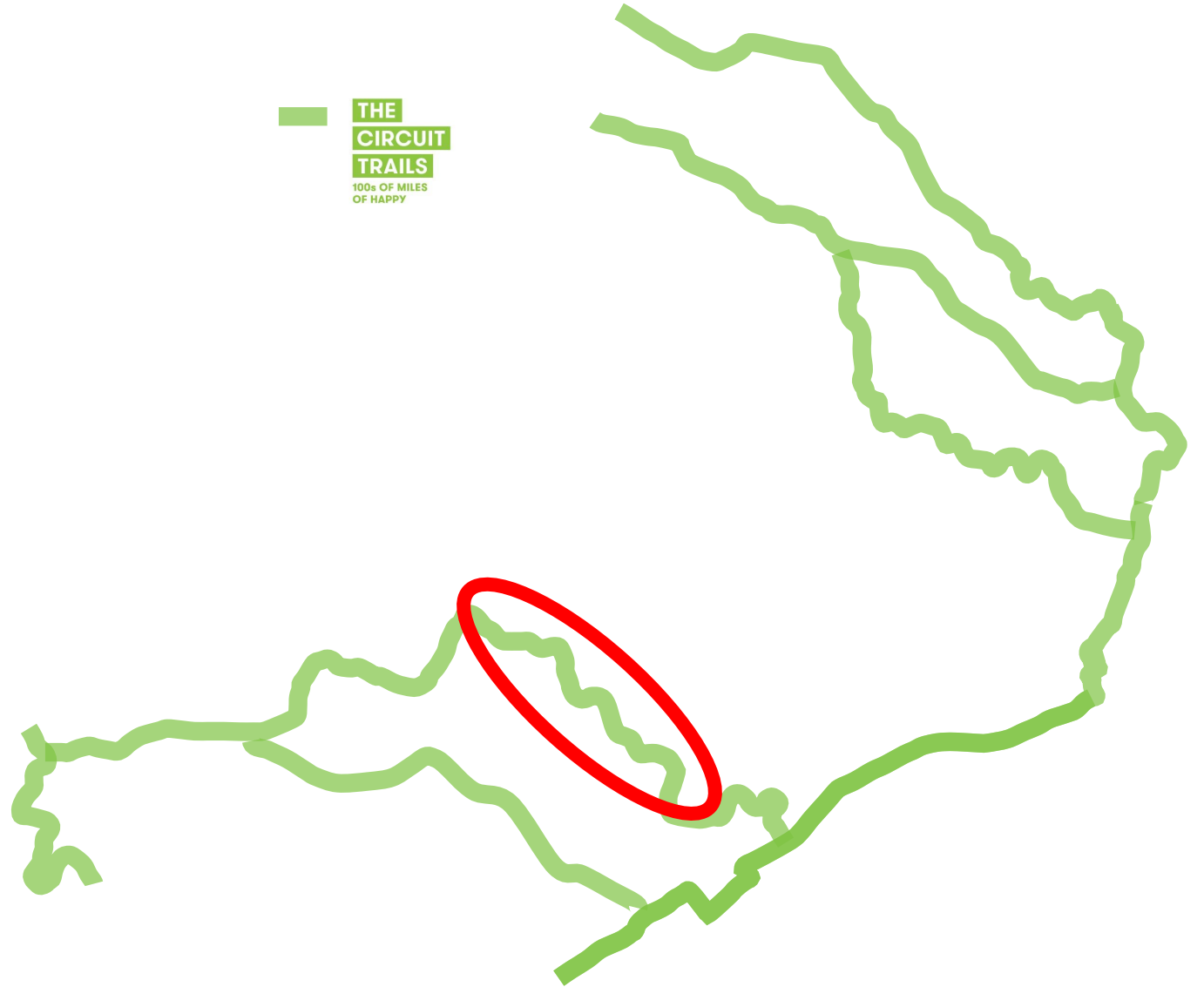
## PRIMARY TRAIL NETWORK



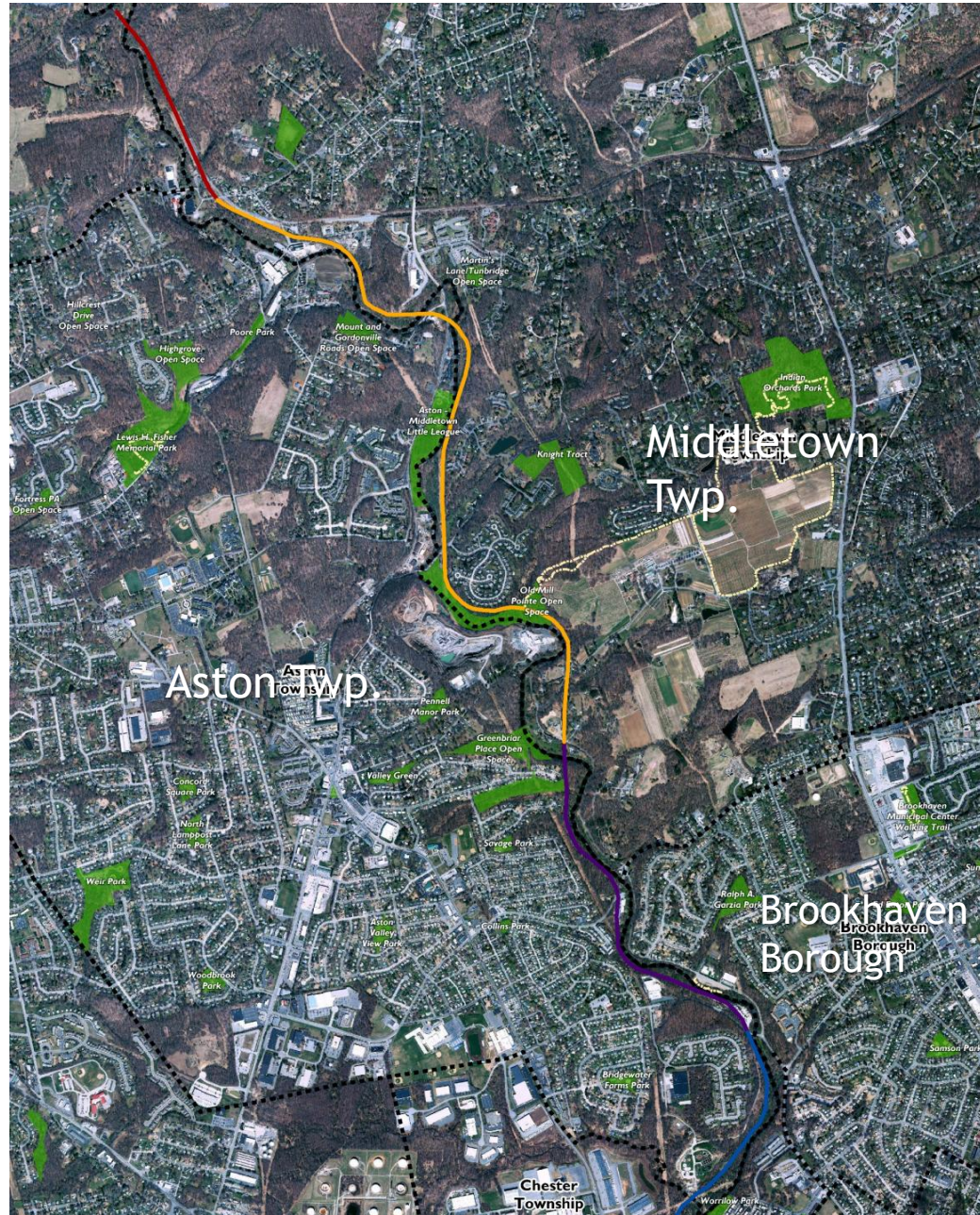
**THE  
CIRCUIT  
TRAILS**

100s OF MILES  
OF HAPPY

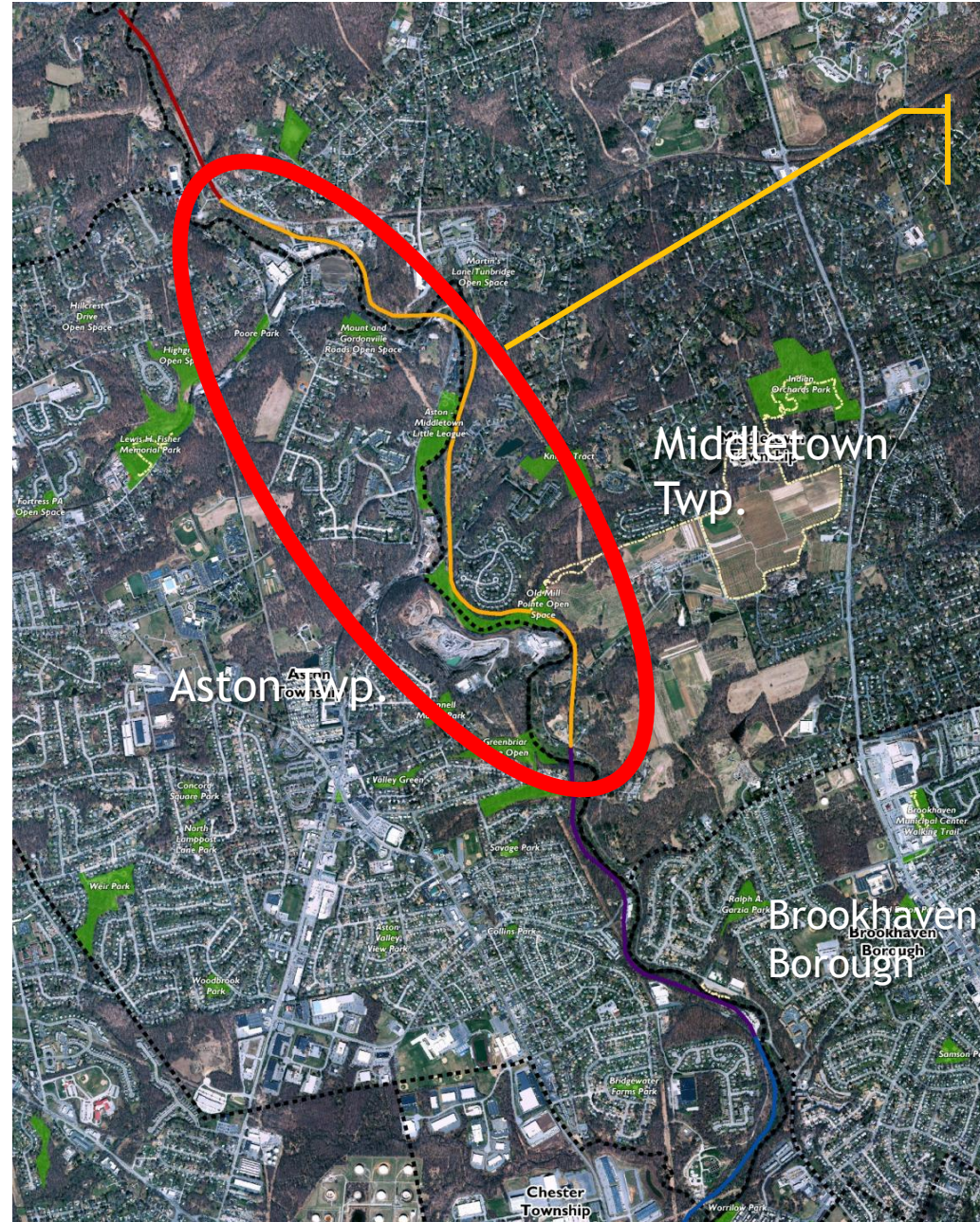
— **THE  
CIRCUIT  
TRAILS**  
100s OF MILES  
OF HAPPY



# CHESTER CREEK TRAIL

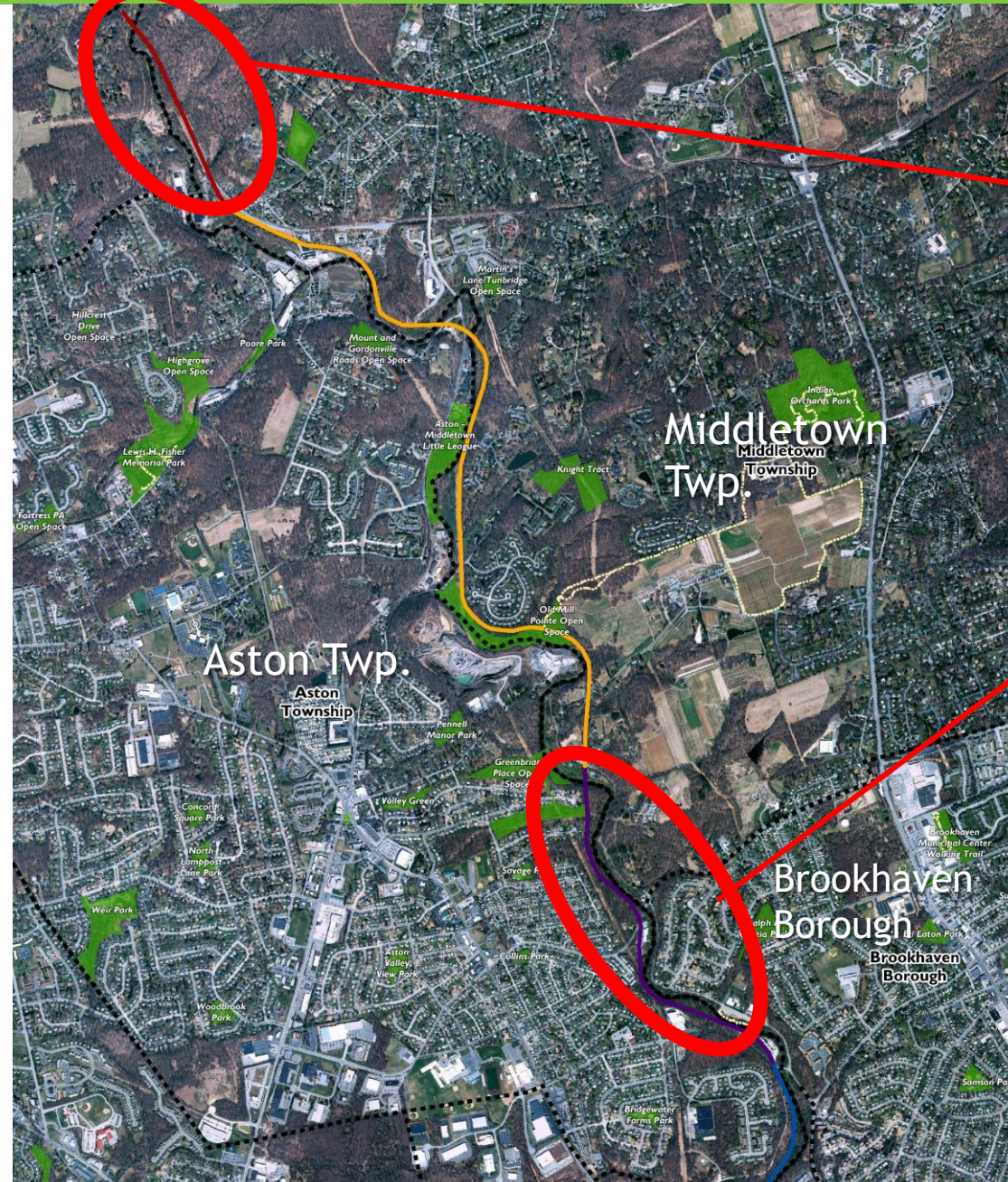


# CHESTER CREEK TRAIL – Phase 1



Phase 1 -  
Opened  
Spring, 2017

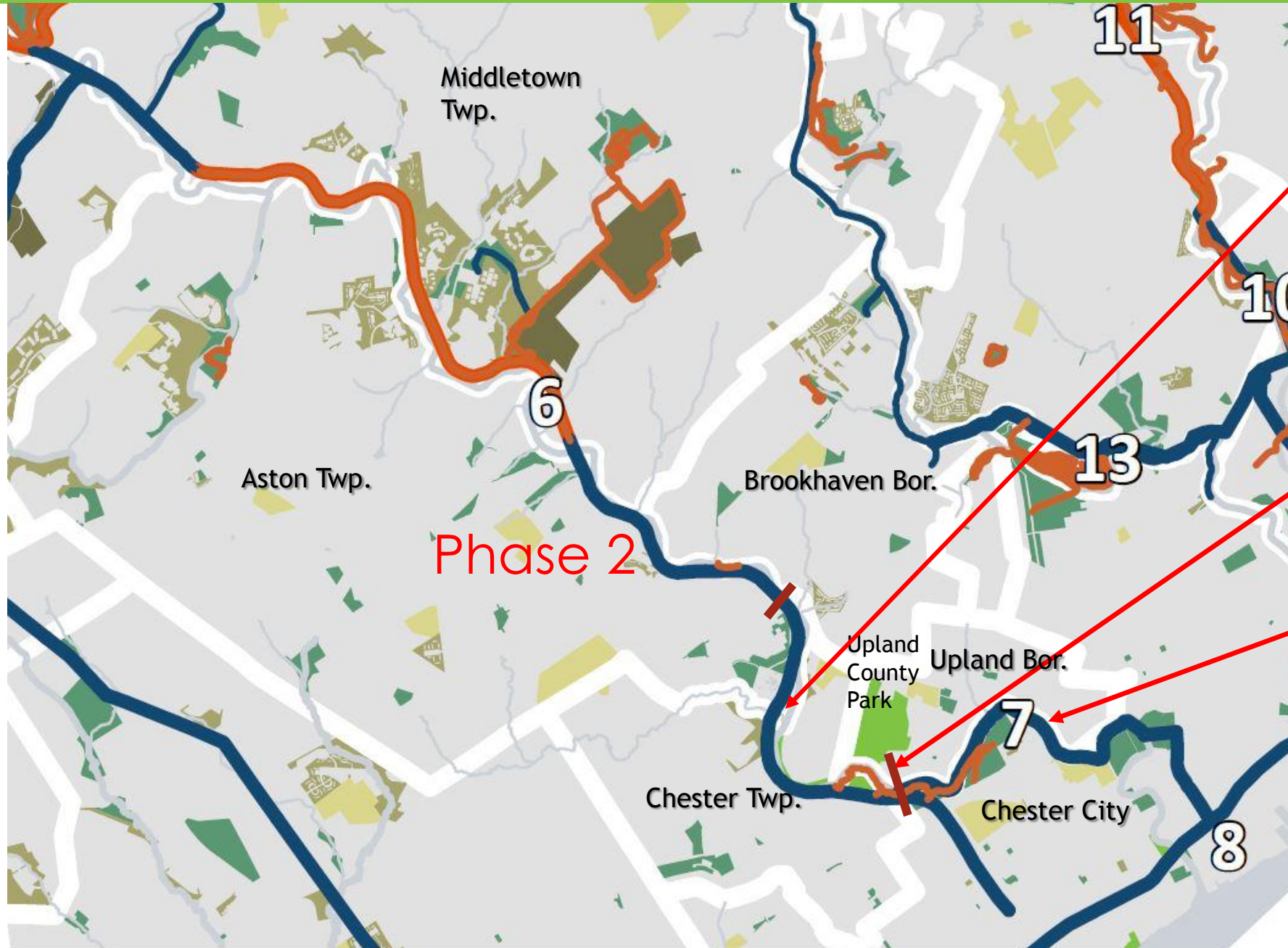
# CHESTER CREEK TRAIL - Phasing



Phase 3  
(future, not yet  
designed)

Phase 2  
(design  
underway)

# CHESTER CREEK TRAIL



Phase 4  
(future phase)

Southern  
Limits of 2002  
Feasibility  
Study

Chester City-  
Led Trail  
Initiative

# CHESTER CITY'S PLANNING

## RESILIENCE THROUGH RECREATION

CITY OF CHESTER  
2018 - 2027

PARKS, TRAILS, & OPEN SPACE PLAN UPDATE



## BIKE AND PEDESTRIAN PATHS CHESTER CREEK TRAIL

EXISTING CONDITIONS IMAGES PLAN



CROZER PARK



CROZER PARK - ENTRY TO PATH AT FINLAND DRIVE



DESHONG PARK



CONCORD STREET BRIDGE AT I-95 EXISTING UNDERPASS



LAMOKIN STREET



AVENUE OF THE STATES DOWNTOWN CHESTER



CHESTER CREEK IN EYRE PARK



CONNECTION WITH NATURE



SAFE ROAD CROSSINGS



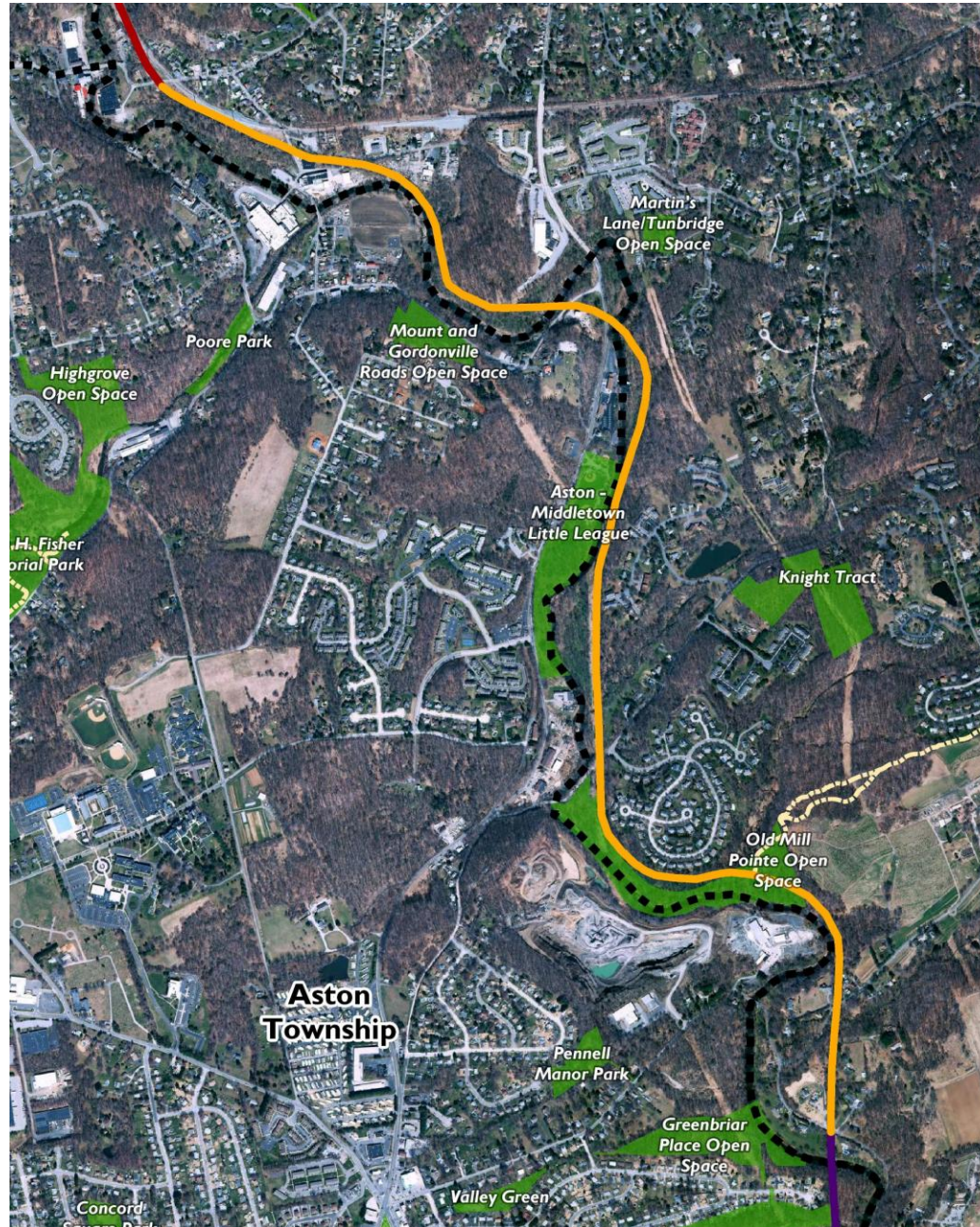
OPPORTUNITIES FOR RIPARIAN BUFFER RESTORATION

IMAGES ARE EXAMPLES ONLY AND NOT SITE-SPECIFIC

CHESTER CITY: PARKS, TRAILS, + OPEN SPACE MASTER PLAN UPDATE

VRIDIAN LANDSCAPE STUDIO | ANN TOOLE RECREATION | NATURAL LANDS | PENNSYLVANIA ENVIRONMENTAL COUNCIL

# CHESTER CREEK TRAIL – Phase 1



Opened: Spring, 2017



# Chester Creek Trail – Phase 1



# Chester Creek Trail – Phase 1



# Chester Creek Trail – Phase 1



# Chester Creek Trail – Phase 1



# Chester Creek Trail – Phase 1



# Chester Creek Trail – Phase 2



# Chester Creek Trail – Phase 2

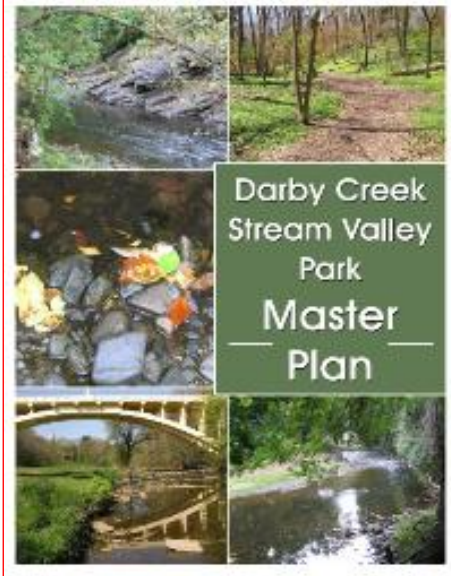


# DARBY CREEK STREAM VALLEY TRAIL

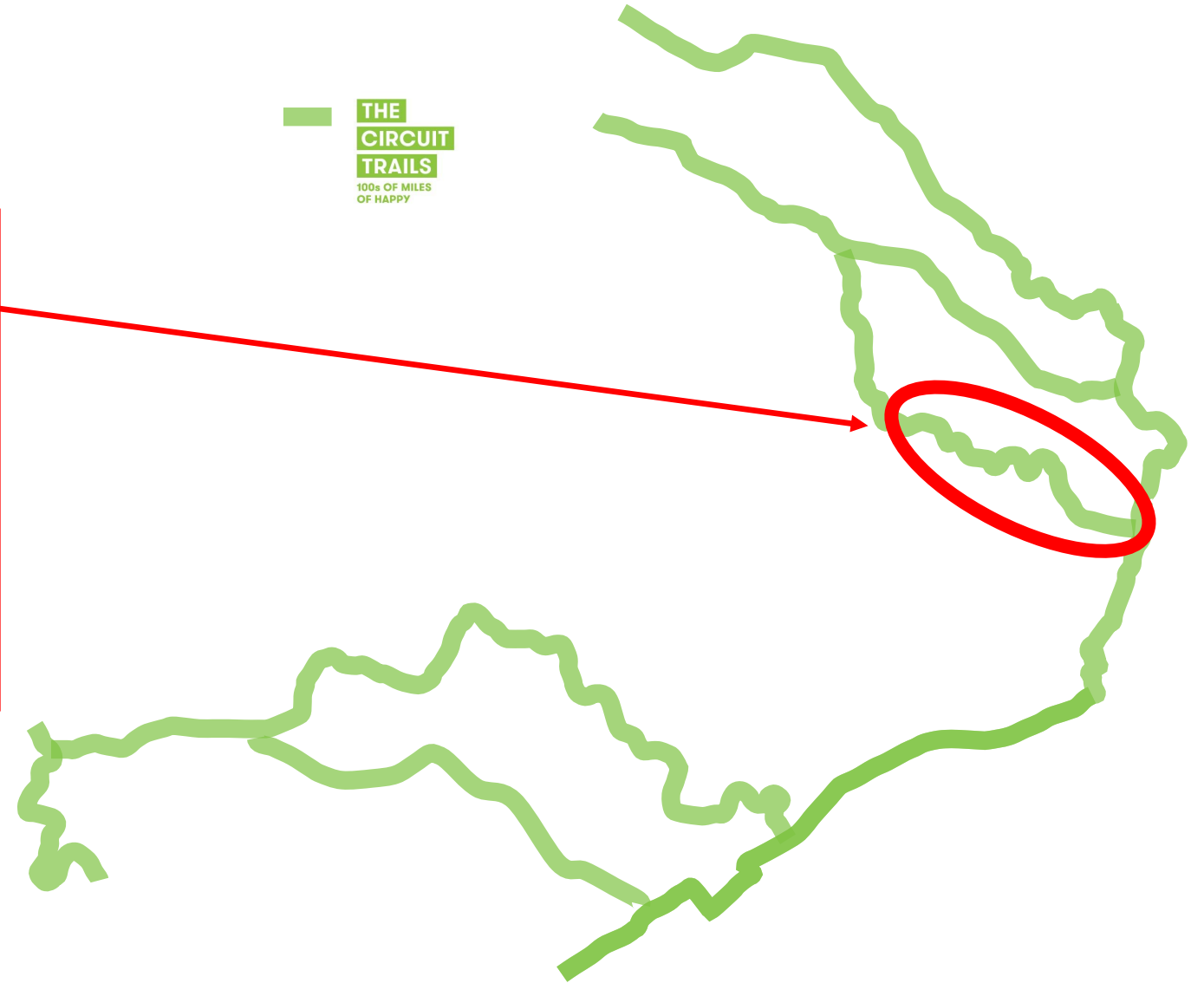


**THE  
CIRCUIT  
TRAILS**

100s OF MILES  
OF HAPPY

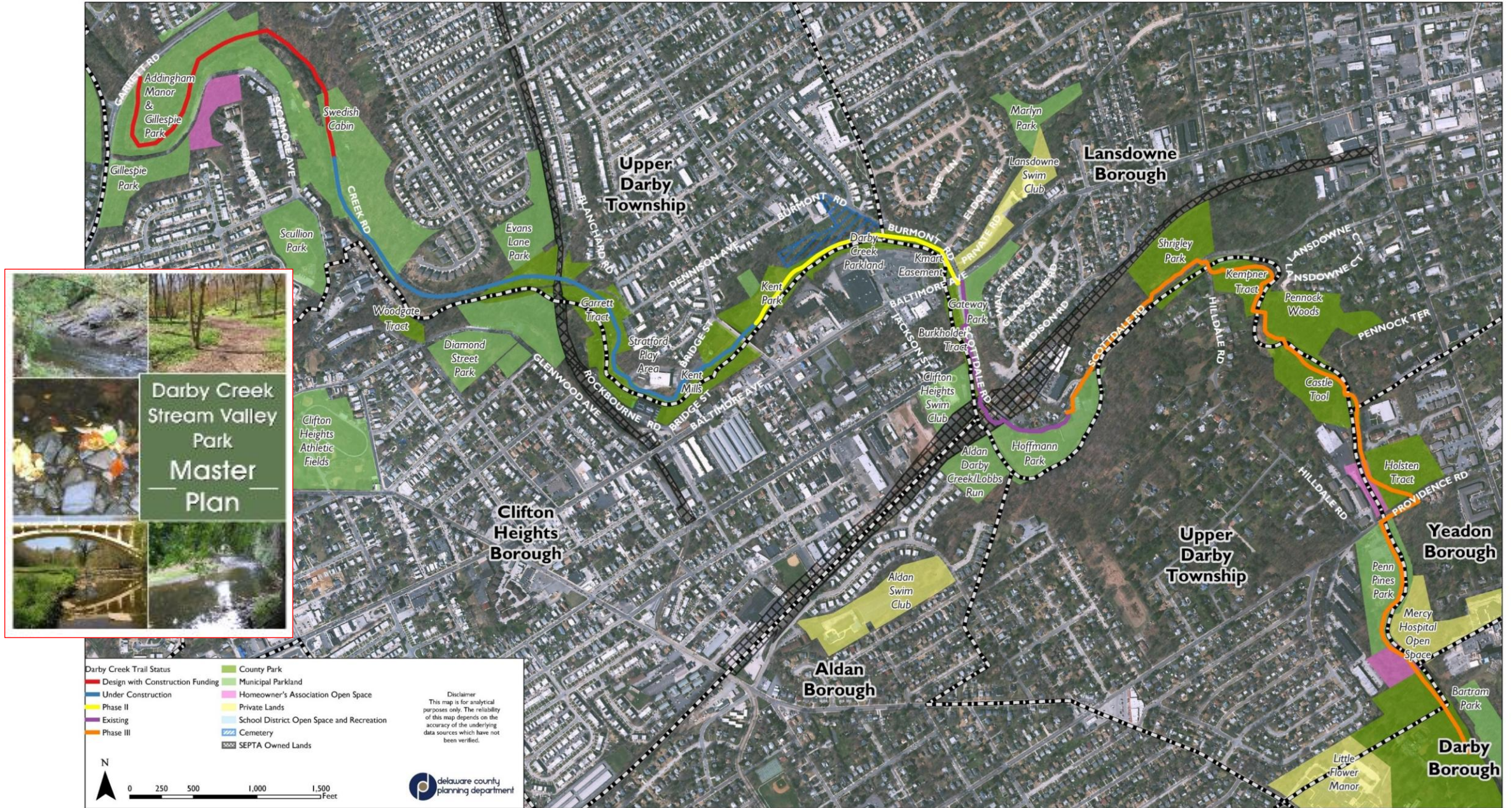


**THE  
CIRCUIT  
TRAILS**  
100s OF MILES  
OF HAPPY





# DARBY CREEK STREAM VALLEY TRAIL



# DARBY CREEK STREAM VALLEY TRAIL



# Darby Creek Trail – Phase 1



# Darby Creek Trail – Phase 1



# Darby Creek Trail – Phase 1



# Darby Creek Trail – Phase 1



# Darby Creek Trail – Phase 1



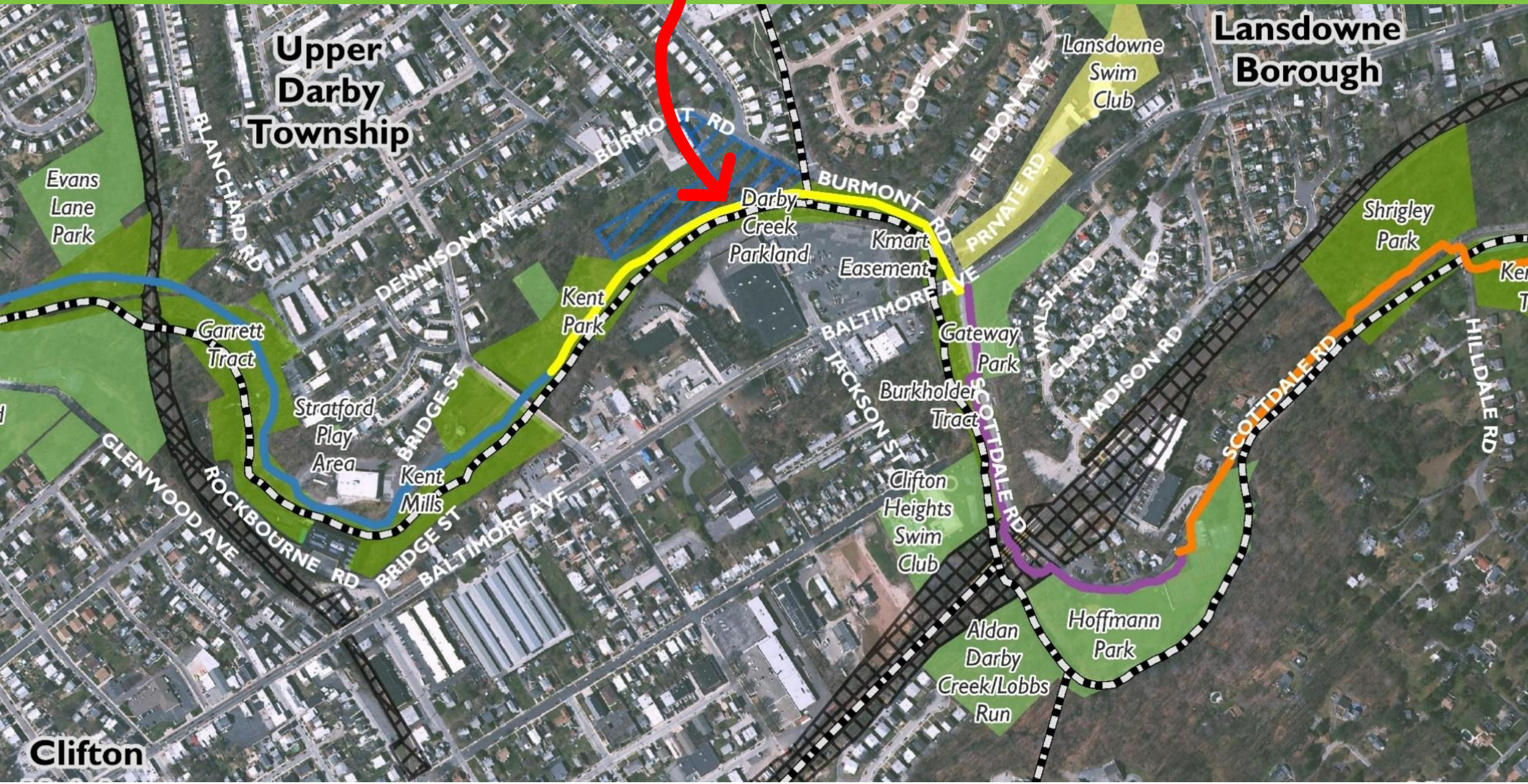
# Darby Creek Trail – Phase 1







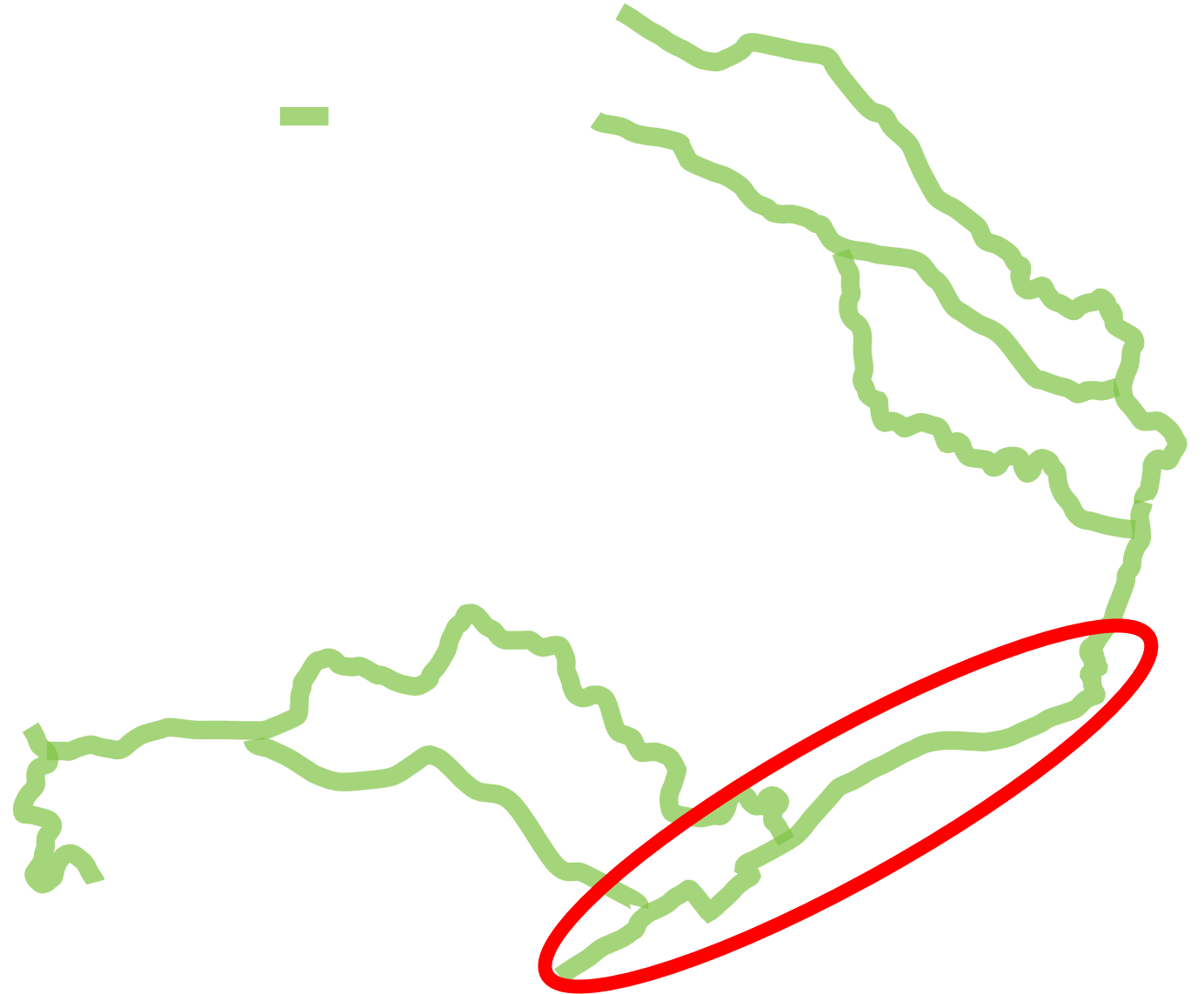
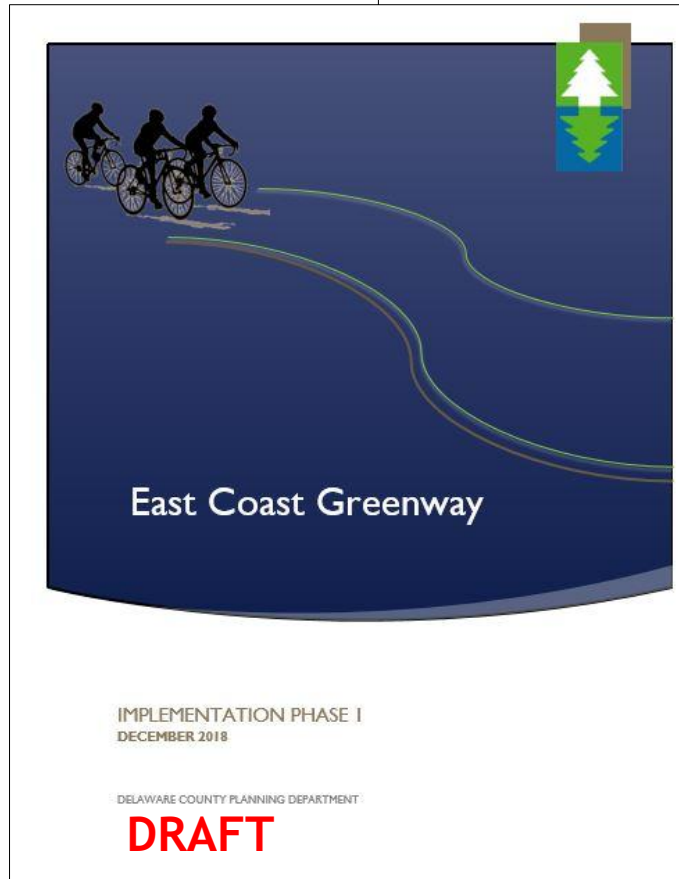
# DARBY CREEK TRAIL – PHASE 2



# Darby Creek Trail – Phase 2



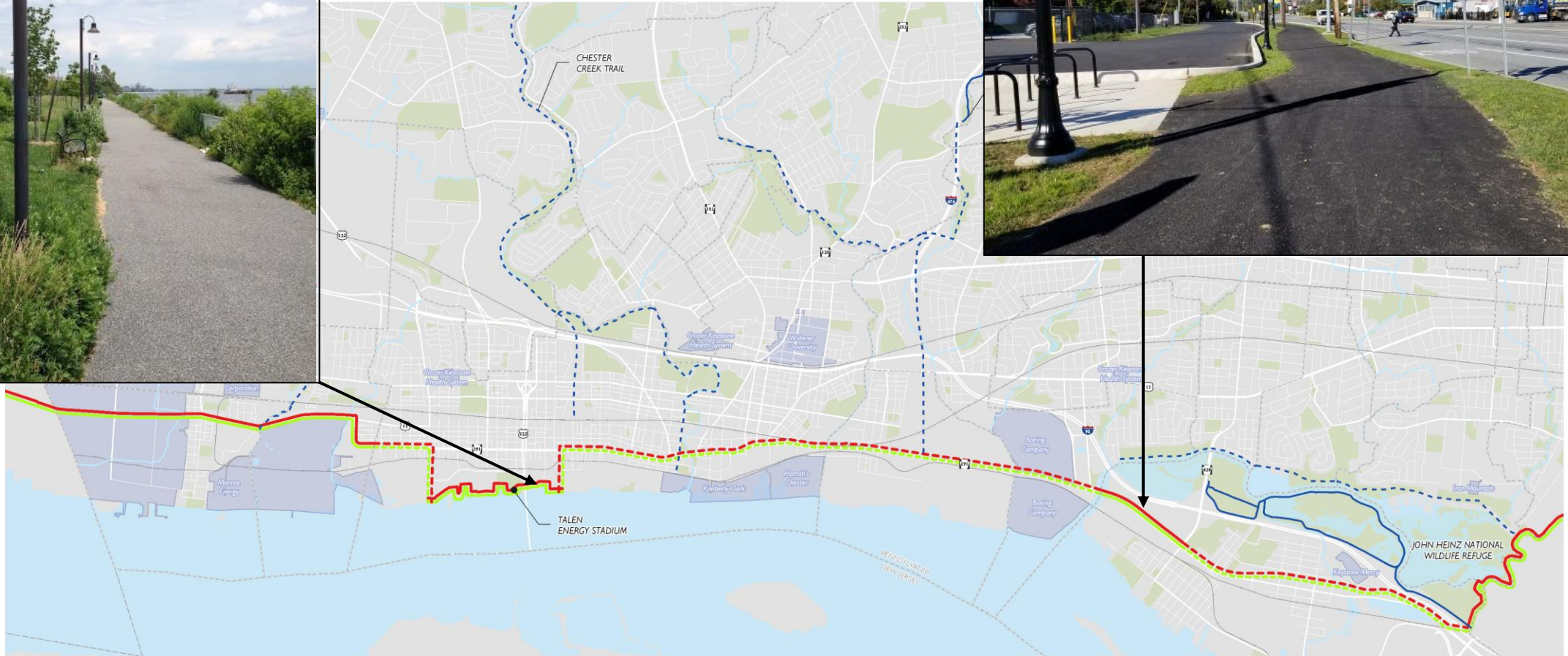
# EAST COAST GREENWAY



# EAST COAST GREENWAY



## East Coast Greenway And September 11th National Memorial Trail



### East Coast Greenway

- Existing
- Proposed

### September 11th National Memorial Trail

- Existing
- Proposed

### Delaware County Primary Trail Network

- Existing
- Proposed

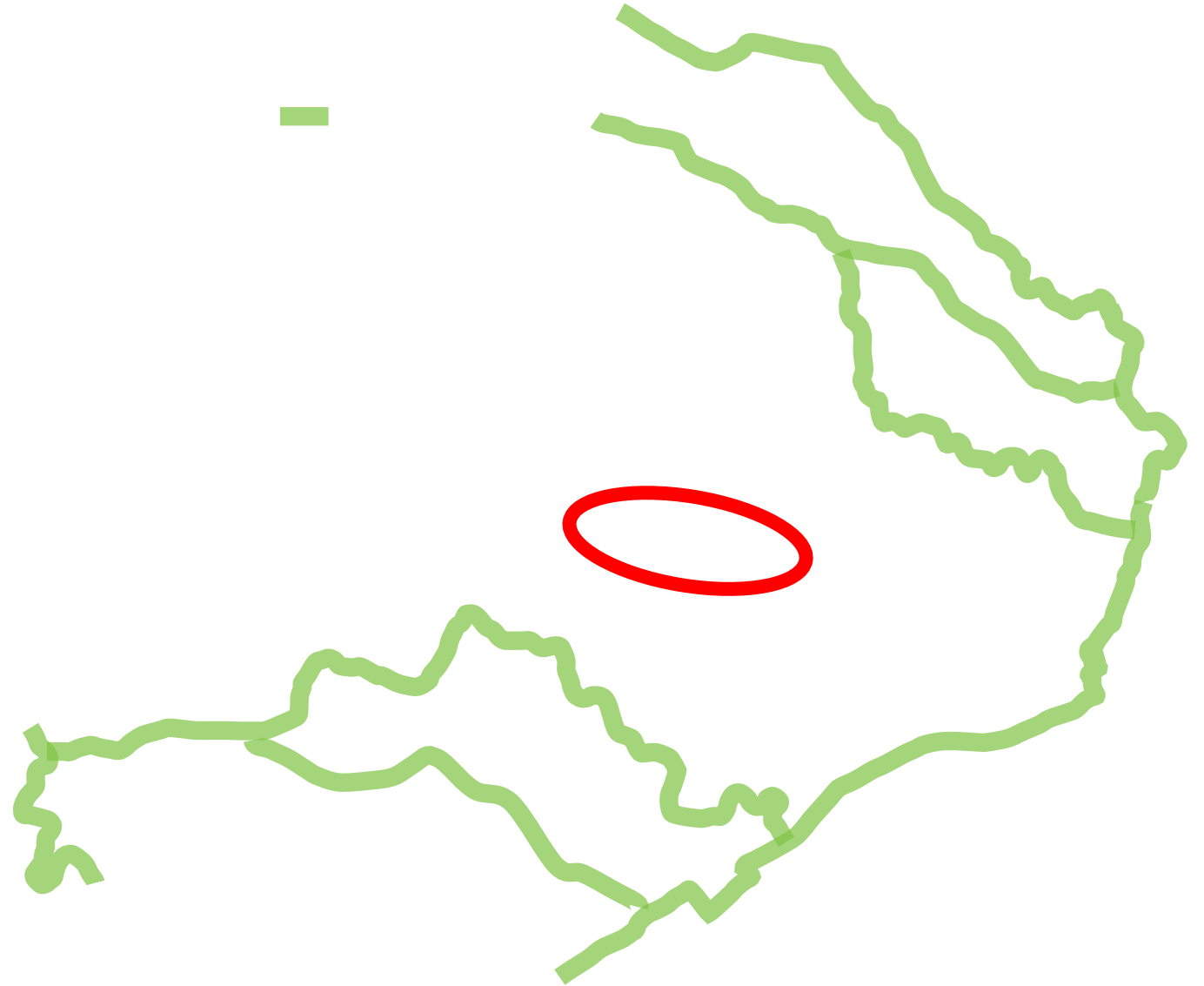
- Streams
- Rail Lines

- Open Space/Parks
- Major Employers

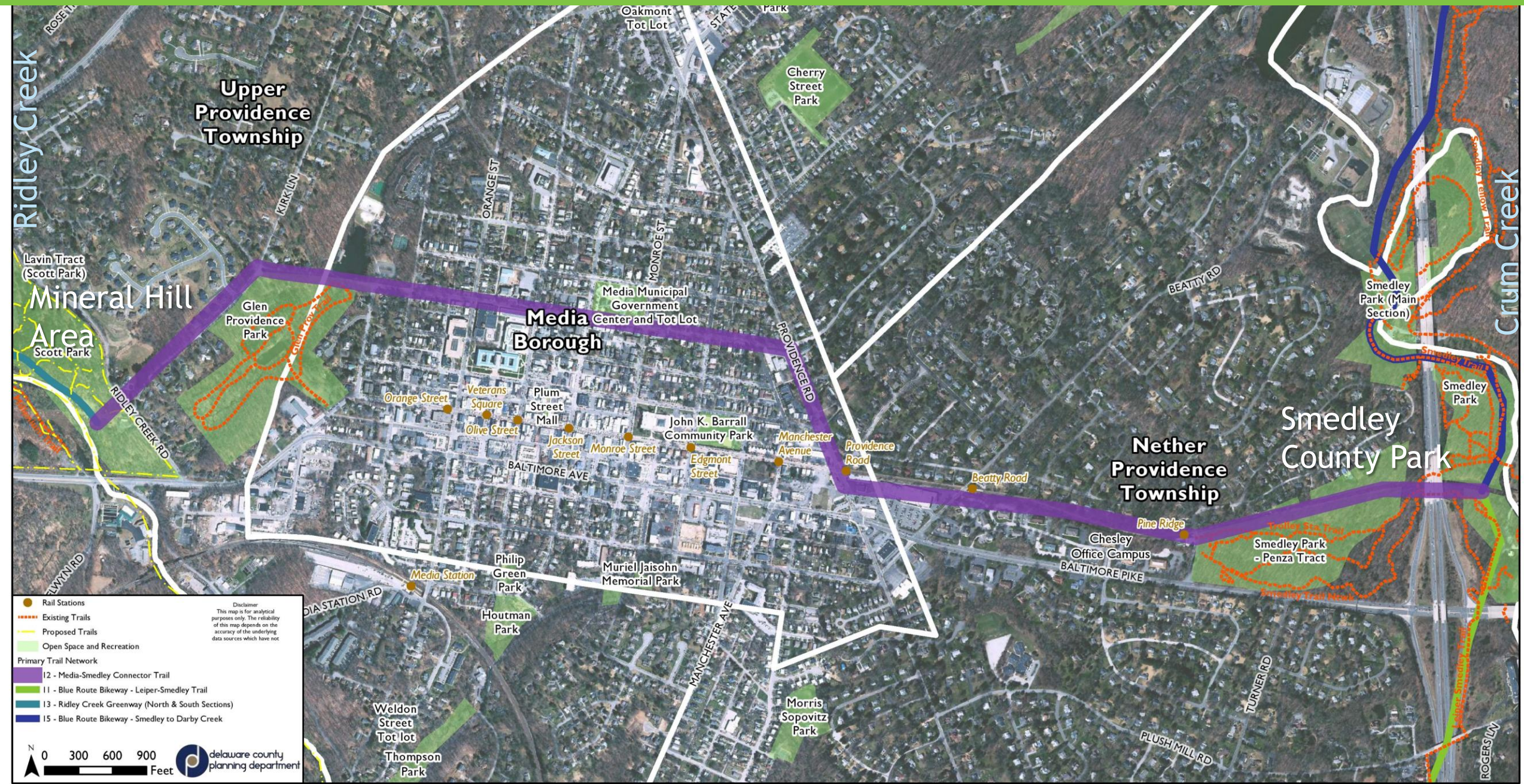
- Municipal Boundary



# MEDIA-SMEDLEY CONNECTOR TRAIL FEASIBILITY STUDY



# MEDIA-SMEDLEY CONNECTOR TRAIL FEASIBILITY STUDY



# DELAWARE COUNTY

## PRIMARY TRAIL NETWORK



**Current  
Municipality-Led  
Trail Projects**



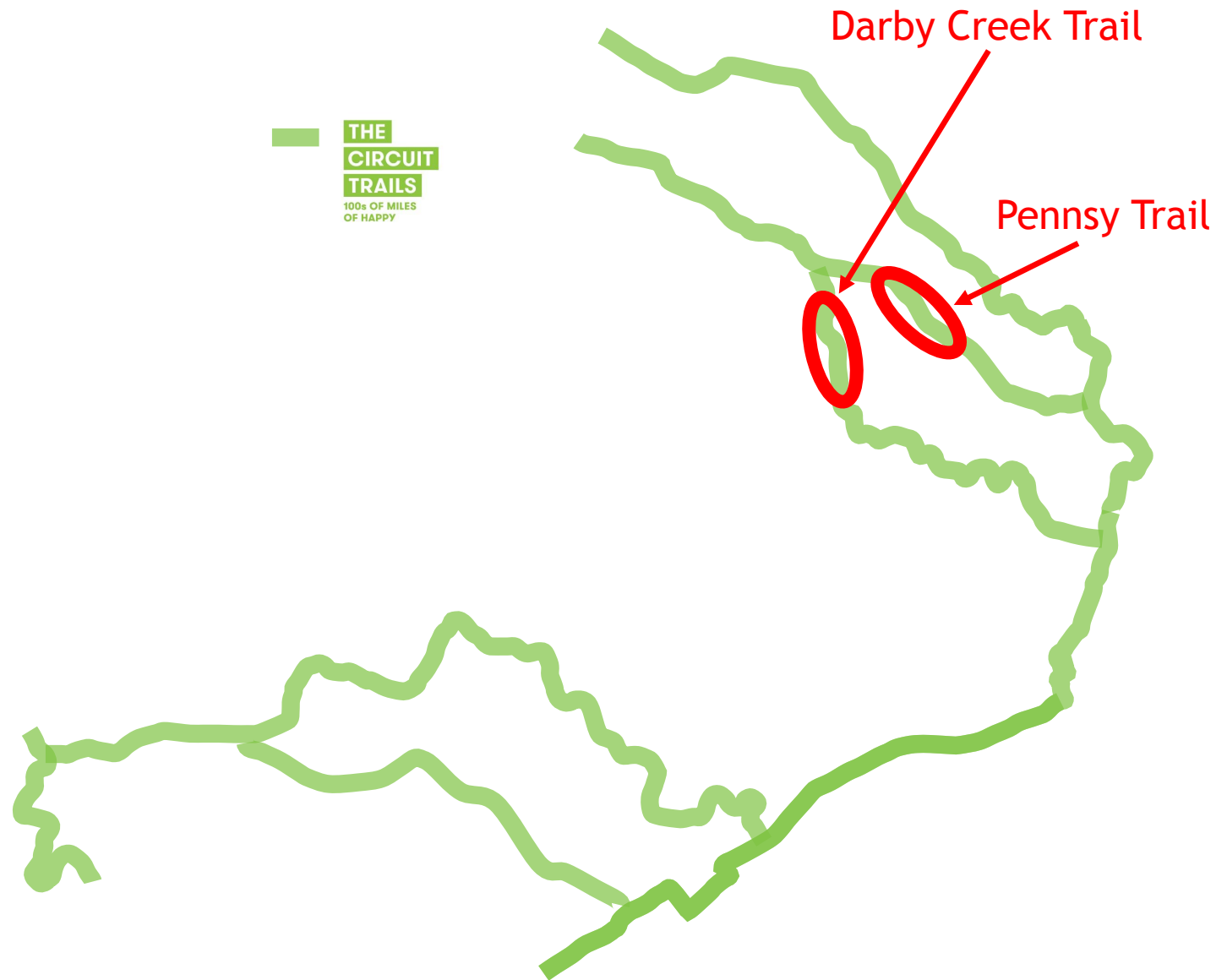


# HAVERFORD TOWNSHIP-LED TRAIL PROJECTS

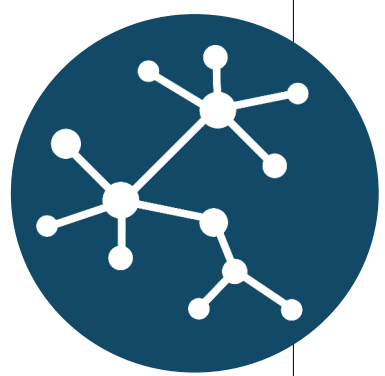


**THE  
CIRCUIT  
TRAILS**  
100s OF MILES  
OF HAPPY

**THE  
CIRCUIT  
TRAILS**  
100s OF MILES  
OF HAPPY

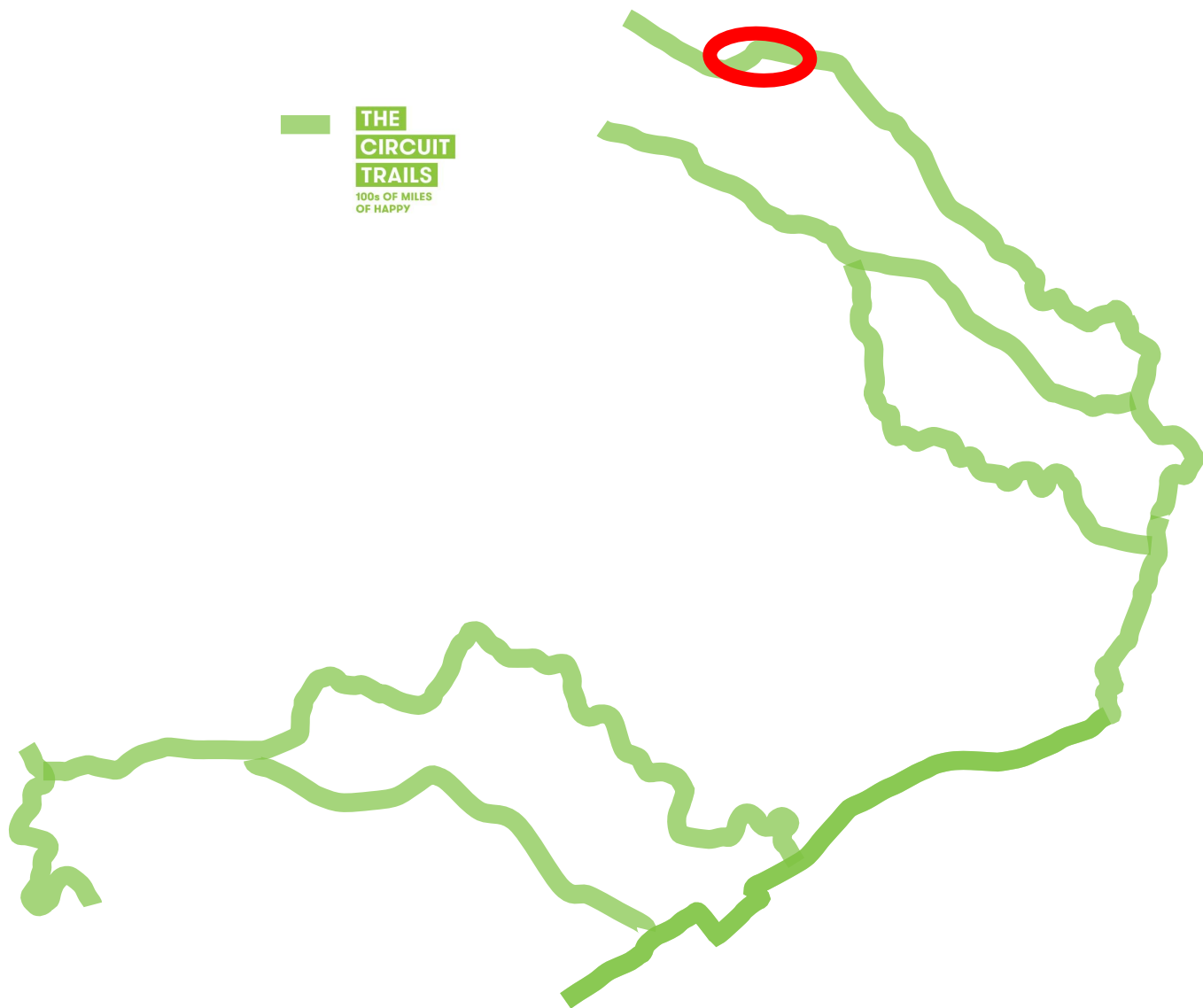


# RADNOR TRAIL EXTENSION (Radnor Township-Led)

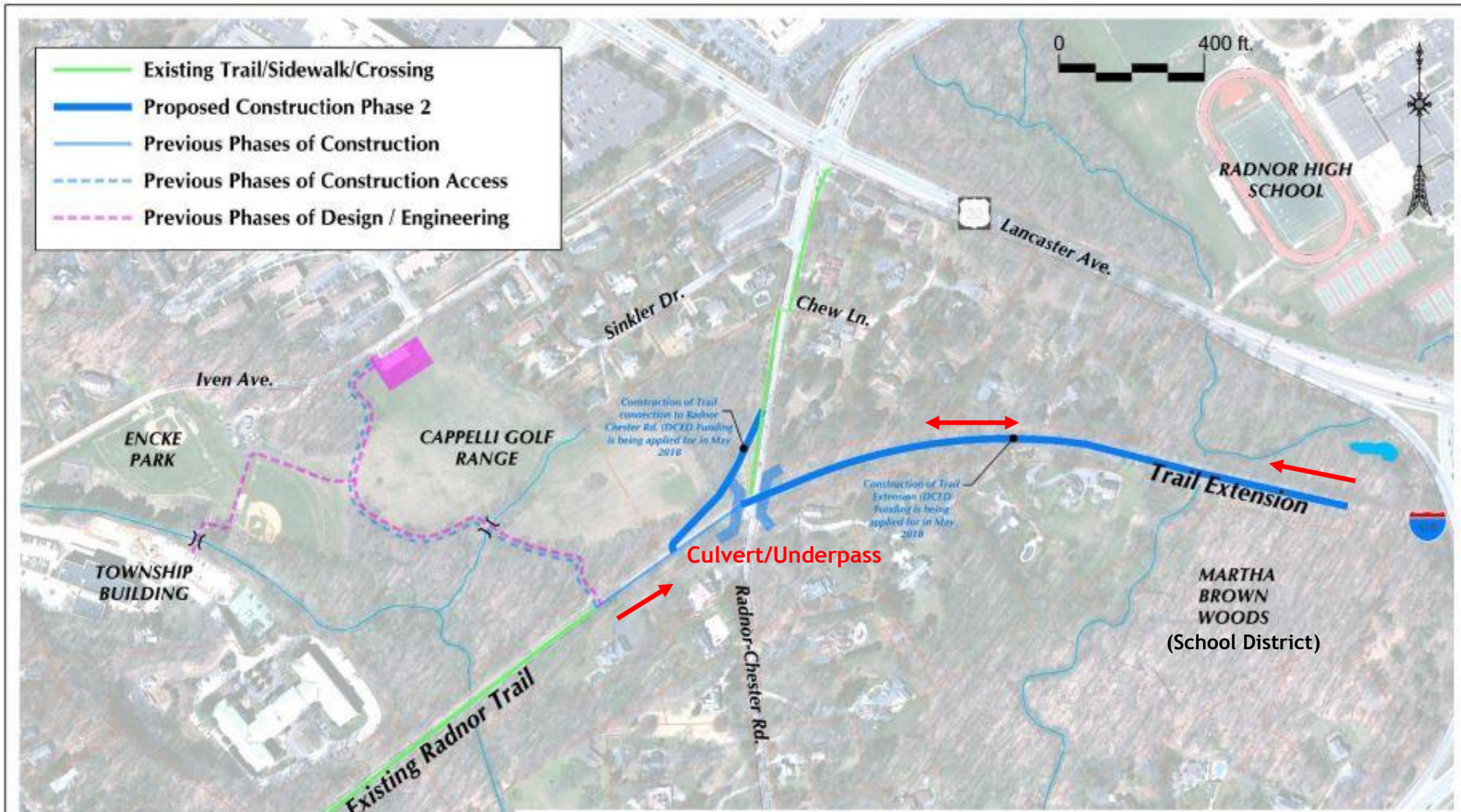


**THE  
CIRCUIT  
TRAILS**  
100s OF MILES  
OF HAPPY

**THE  
CIRCUIT  
TRAILS**  
100s OF MILES  
OF HAPPY



# RADNOR TRAIL EXTENSION (Radnor Township-Led)



FILE: I:\rad-trail\design\base map.dwg	DRAWN BY: DM	<b>Radnor Trail Extension</b>		TITLE: Radnor Trail Extension Phase 2 Construction
PLOT SCALE: As Identified	CHECKED BY: RPT			Radnor Township 301 Iven Avenue Wayne, Pennsylvania 19087-5297
REVISIONS: REMARKS	DATE: 04/10/2018	Campbell Thomas & Company 1504 South Street, Philadelphia, PA 19146 215-545-1076	DWG NO.:	

# CONCORD TOWNSHIP-LED TRAIL PROJECTS

## PRIMARY TRAIL NETWORK

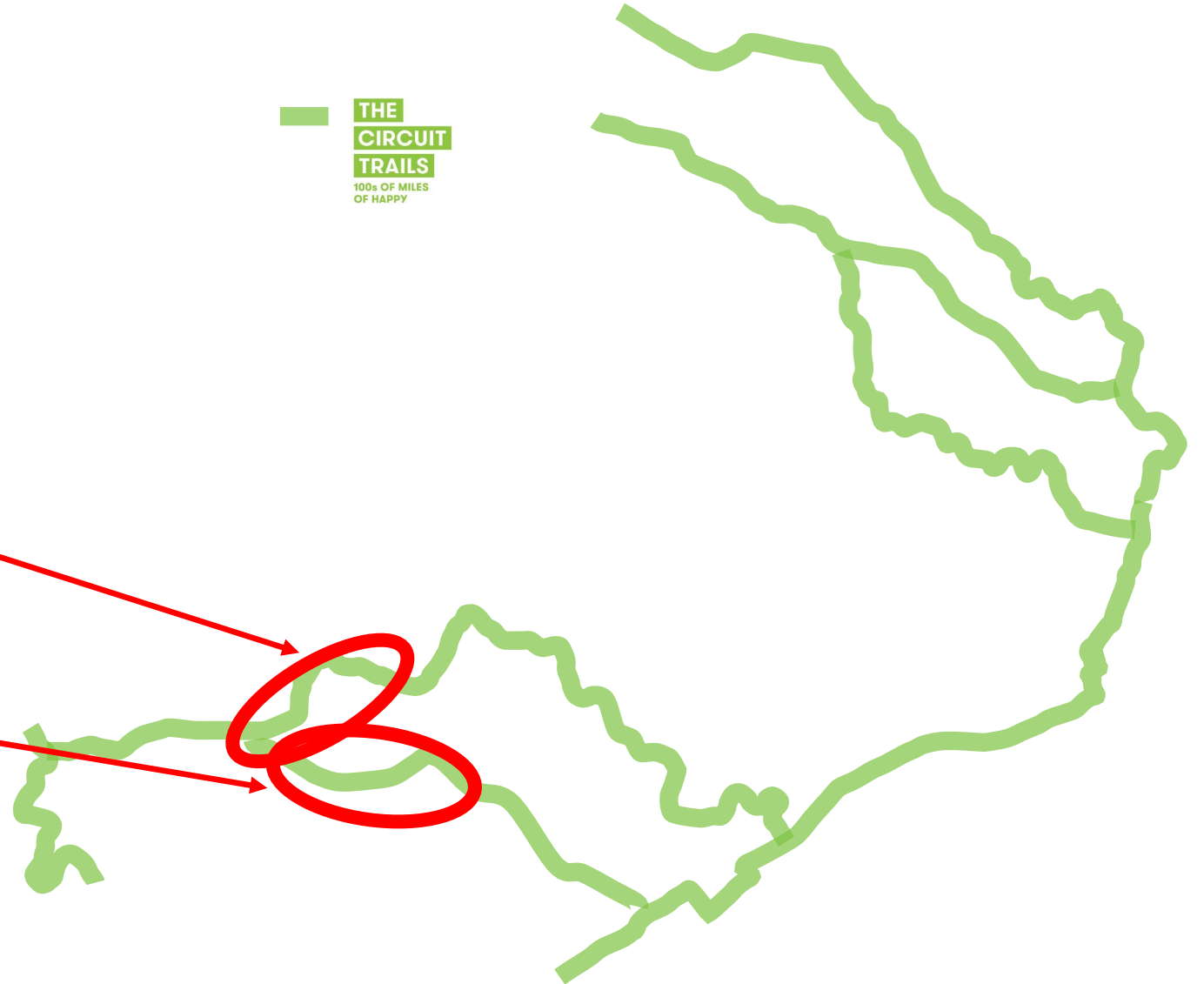


**THE  
CIRCUIT  
TRAILS**  
100s OF MILES  
OF HAPPY

**THE  
CIRCUIT  
TRAILS**  
100s OF MILES  
OF HAPPY









Octoraro Trail: Phase 1A

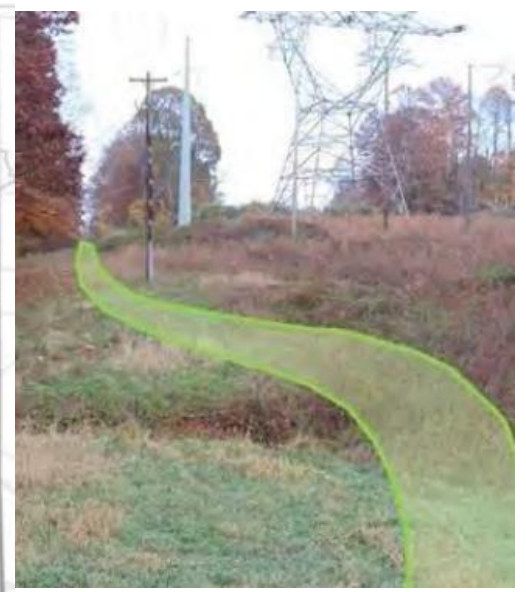
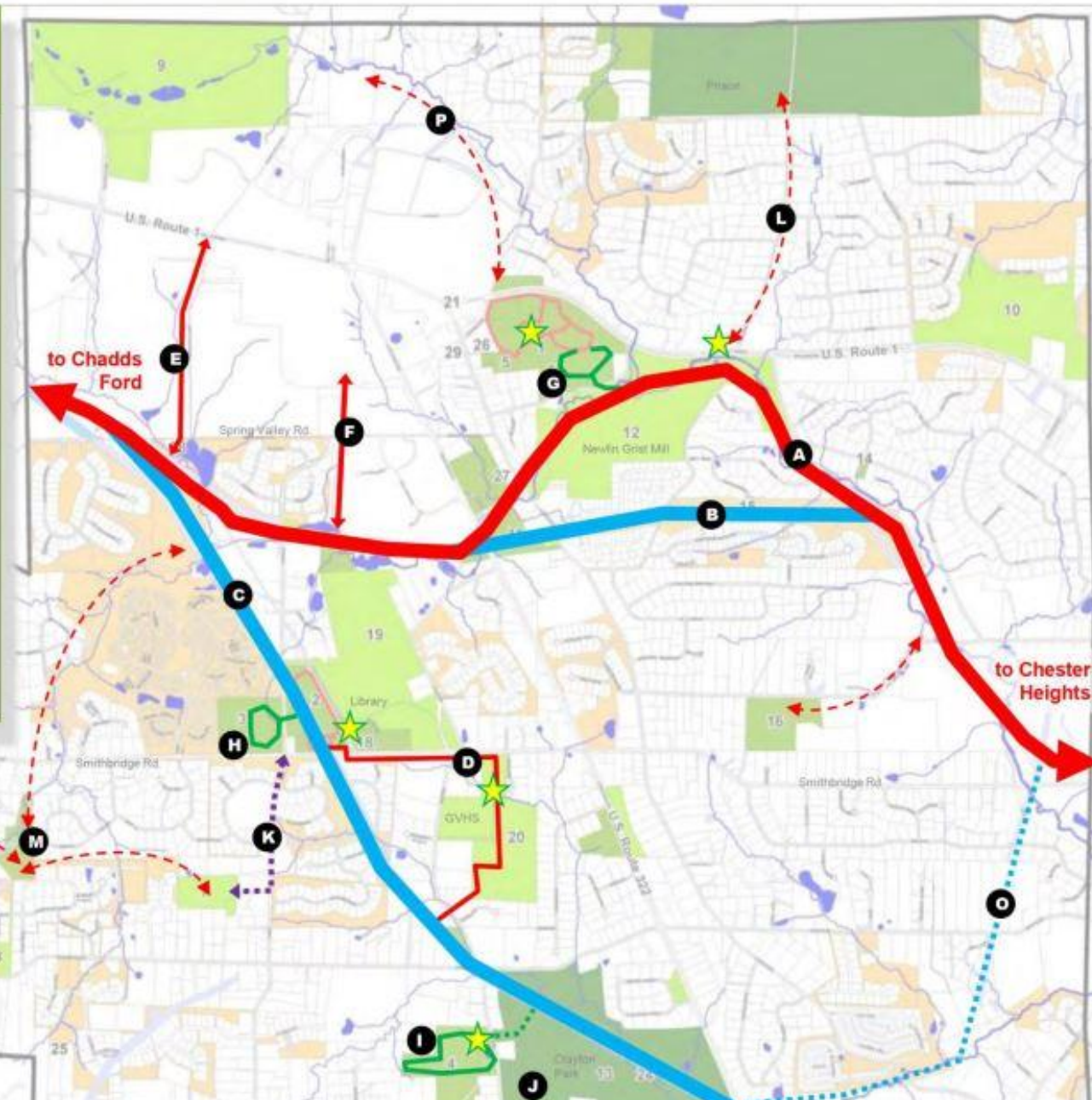
Garnet Valley Greenway  
Feasibility Study  
(PECO R.O.W.)



# CONCORD TOWNSHIP-LED TRAIL PROJECTS

**CONCORD TOWNSHIP  
GREENWAYS AND OPEN SPACE  
NETWORK PLAN**

Trail Types	Trail Segments
Octorara Trail 	A. Octorara Trail
PECO Trail 	B. PECO Trail – East
Utility Corridor 	C. PECO Trail – West
Off-Street Trails (paved) 	D. Smithbridge Trail
Off-Street Trails (unpaved) 	E. Brinton Lake Trail
On-Street Trails 	F. Spring Valley Trail
Other Potential Connections 	G. 43 Thornton Trail
Potential Trail Heads 	H. Collman Trail
	I. 30 Bethel Trails
	J. Clayton Park Trails
	K. BYC Connection
	L. Cheyney Connection
	M. Webb Creek Trails
	N. First State Connection
	O. PECO Trail Extension
	P. West Bank Nature Trail



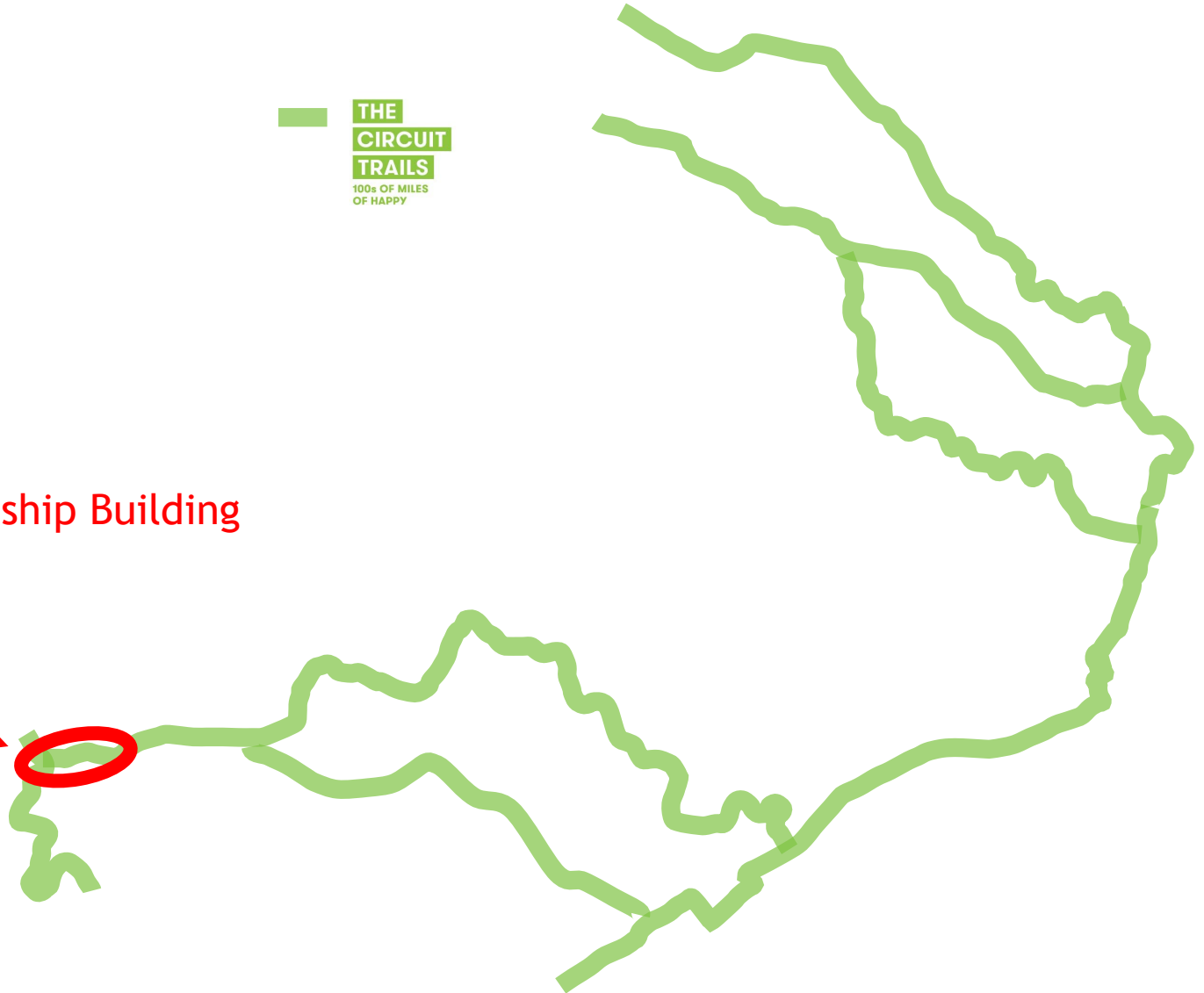
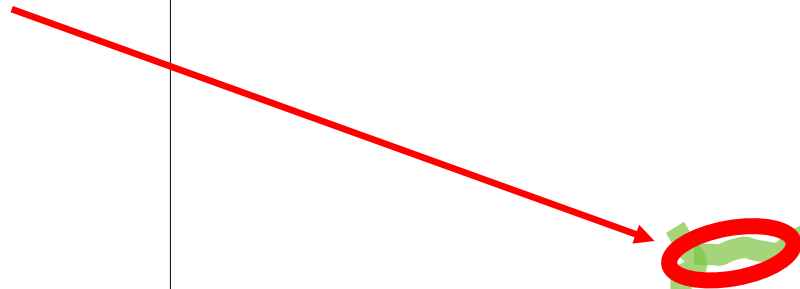
# CHADDS FORD TOWNSHIP-LED TRAIL PROJECTS



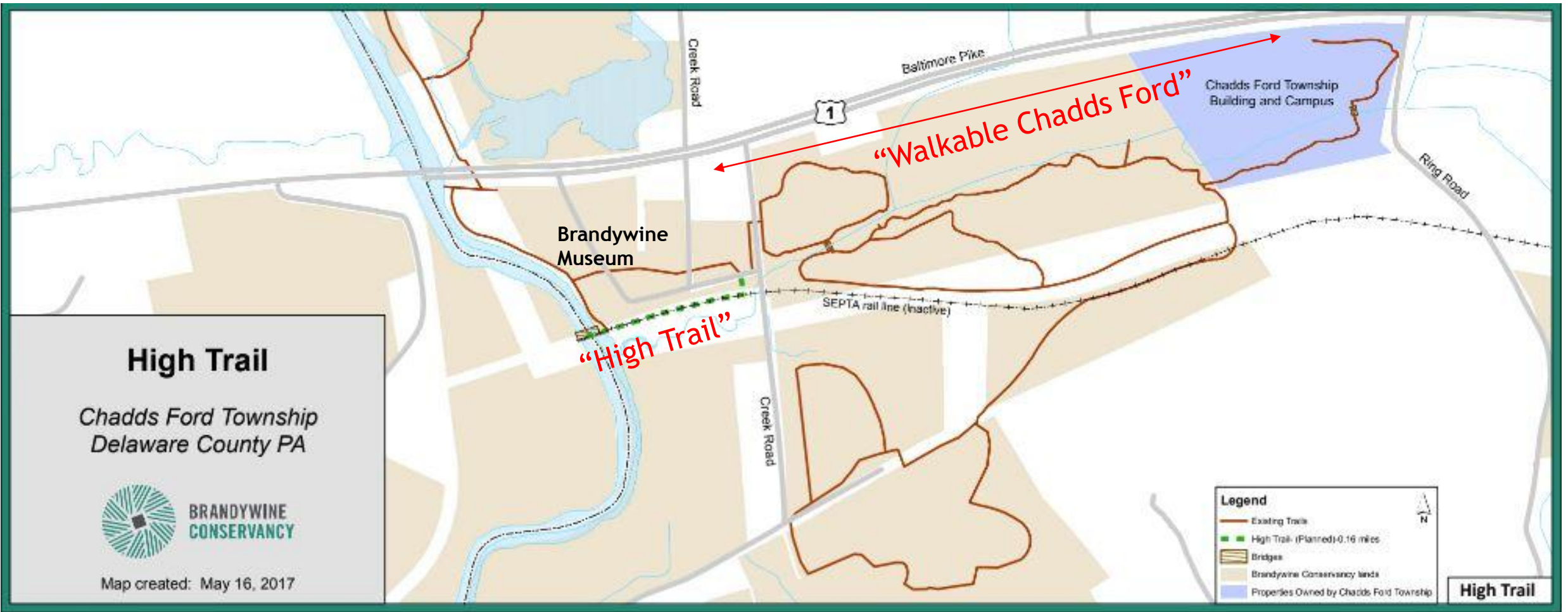
**THE  
CIRCUIT  
TRAILS**  
100s OF MILES  
OF HAPPY

**THE  
CIRCUIT  
TRAILS**  
100s OF MILES  
OF HAPPY

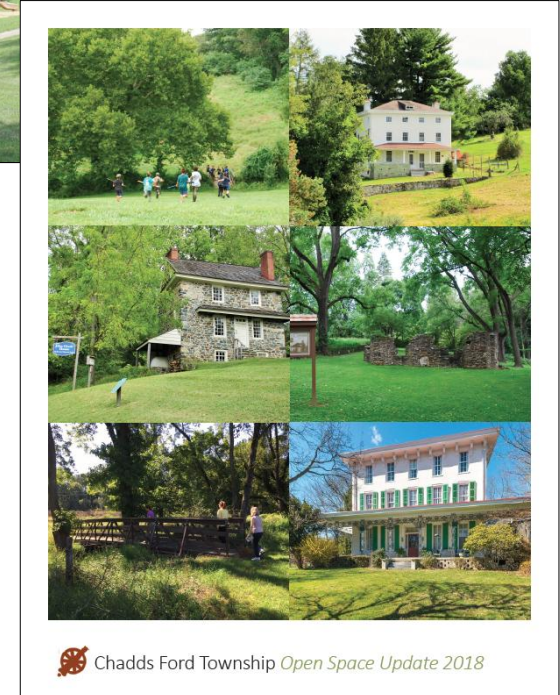
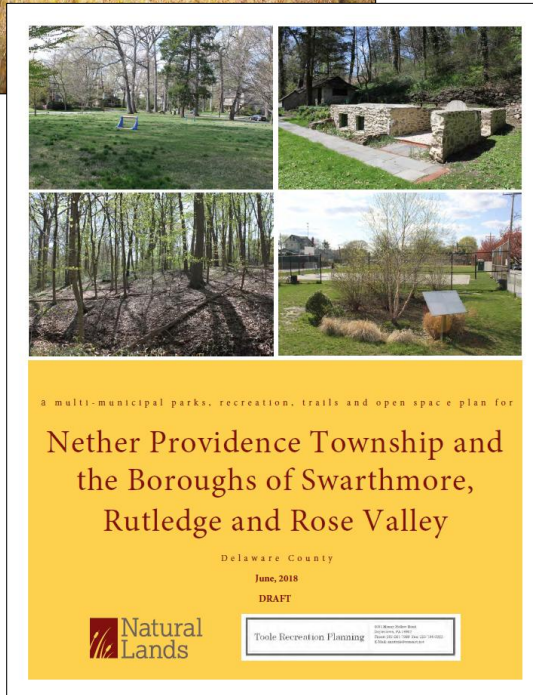
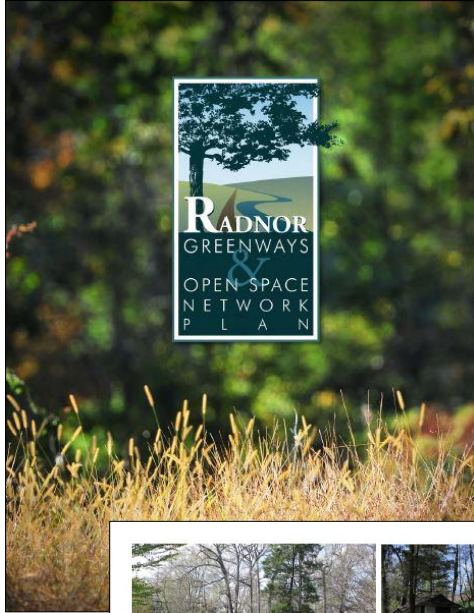
Octoraro Trail: High Trail and Bridge  
Walkable Chadds Ford: Creek Road to Township Building



# CHADDS FORD TOWNSHIP-LED TRAIL PROJECTS



# MUNICIPAL OPEN SPACE & GREENWAY PLANS

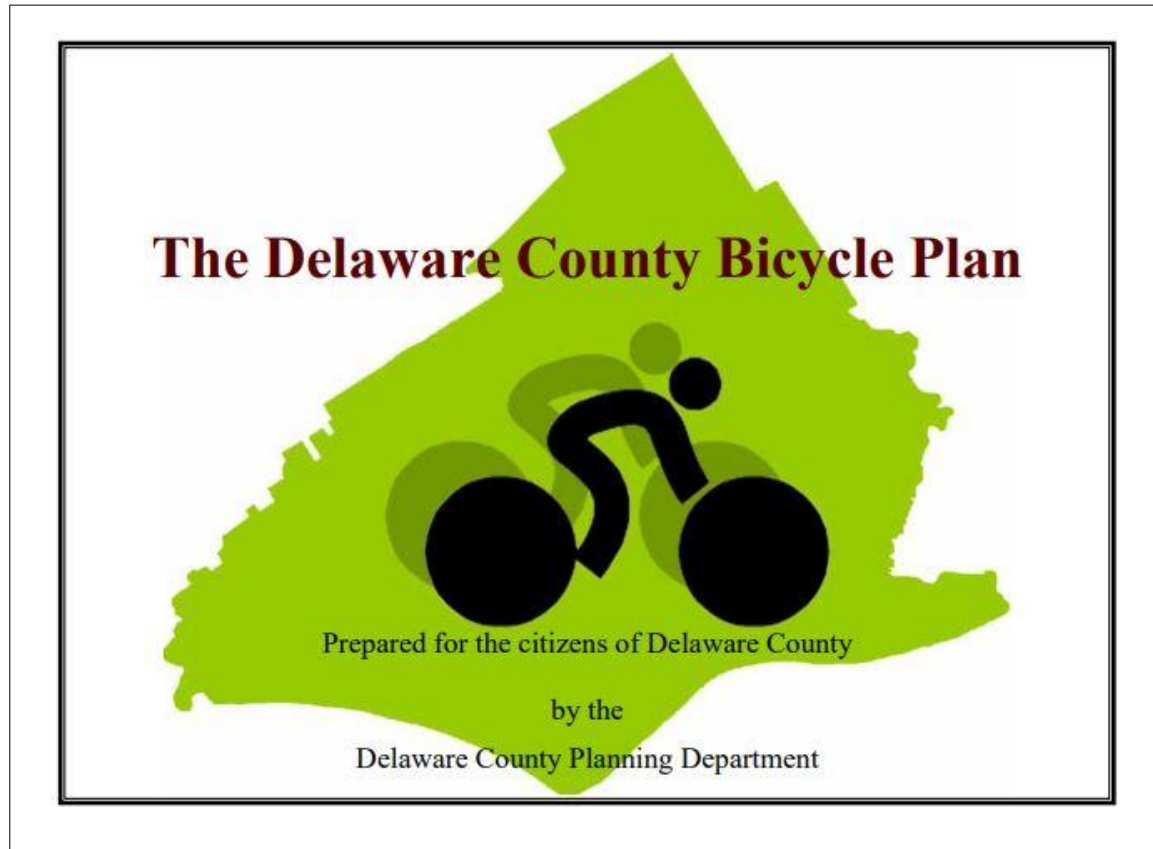




# MUNICIPAL OPEN SPACE & GREENWAY PLANS

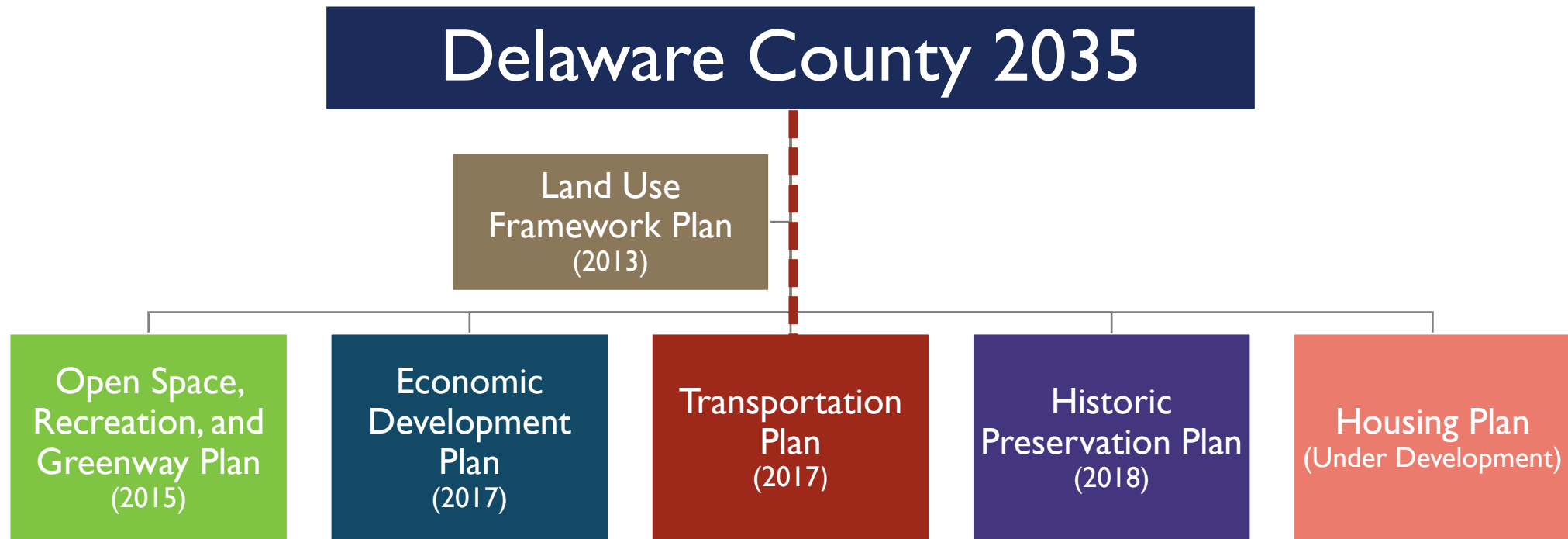
## IN-PROGRESS MUNICIPAL TRAIL SYSTEM PLANNING:

- **Newtown Township Greenway Plan**  
(In-Progress, 2017 DCNR Grant)
- **Marple Township Trail System Study**  
(In-Progress, 2017 DCNR Grant)
- **Concord Township Trail System Study**  
(Just Started, 2018 DCNR Grant - Further planning for trails beyond scope of 2015 plan.)



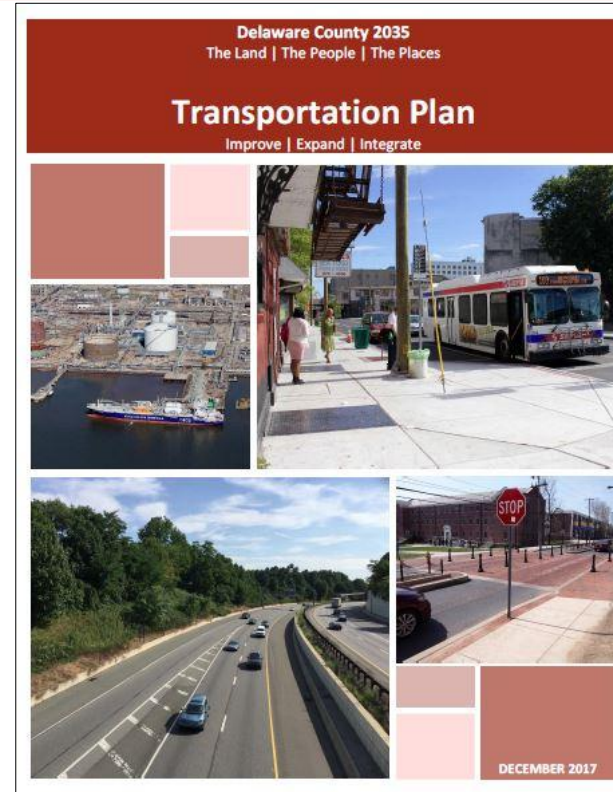
**Adopted May,  
2009**







# Transportation Plan



**Adopted  
December 13, 2017**

**IMPROVE** the safety and capacity of all modes through adaptable and innovative solutions.

**EXPAND** the transportation network so residents can access more than one mode.

**INTEGRATE** all modes into a complete system.



# Bicycle and Pedestrian Network – Identifying Corridors

## Delaware County Bicycle Network (Proposed Corridors)

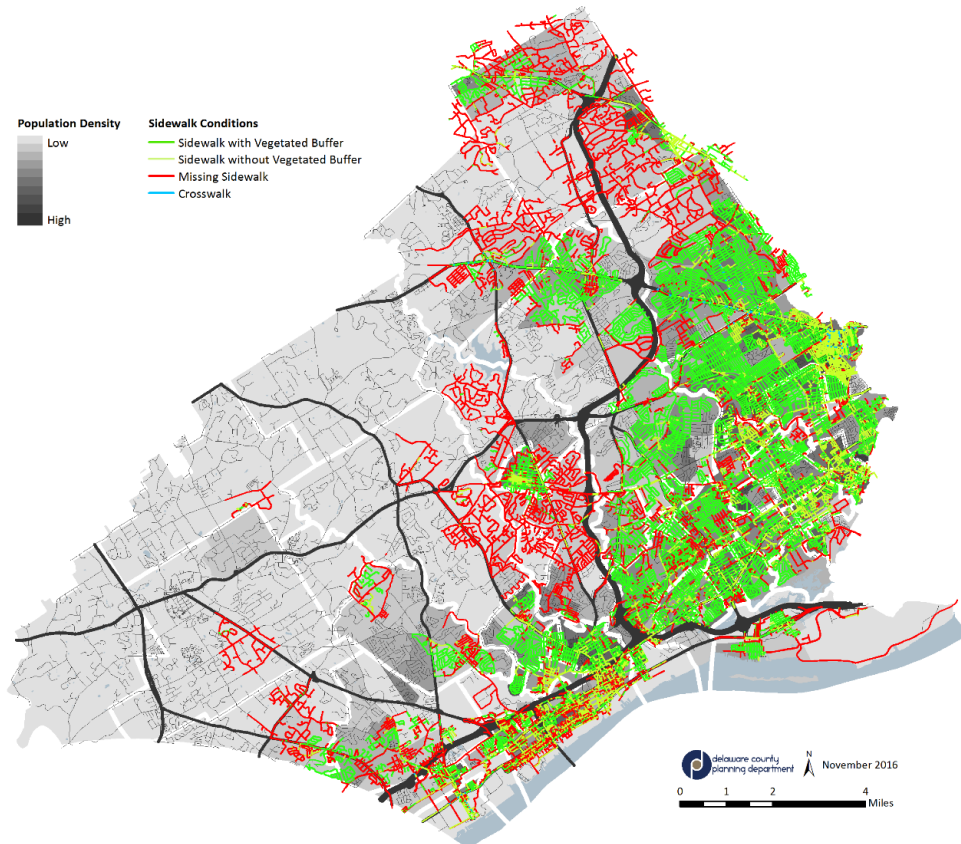


# Objectives and Actions

## ACTION TR 1.3

**Promote, support, and assist in the creation and adoption of municipal bicycle and pedestrian plans.**

### Delaware County Sidewalk Mapping



- Provide technical information to inform municipal plans
- Help identify priority areas and areas of concern

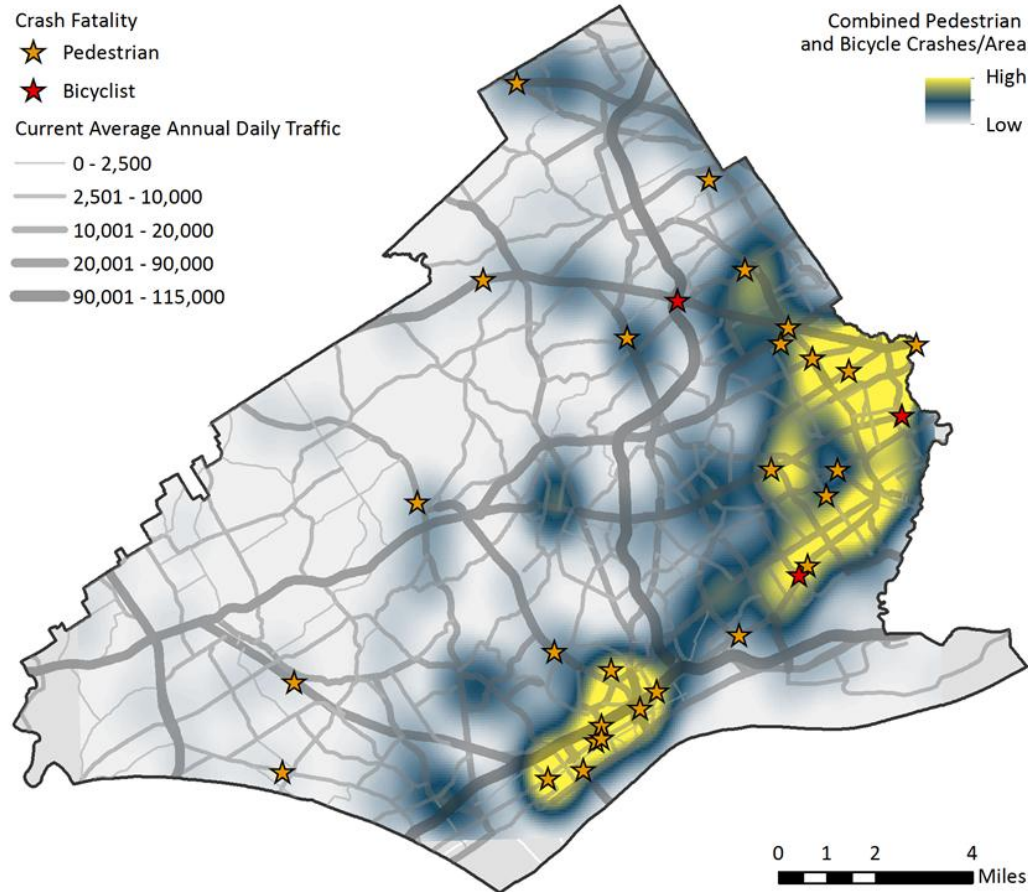


# Objectives and Actions

## ACTION TR 1.6

### Identify priority roadways for Complete Streets implementation.

#### Delaware County Bicycle/Pedestrian Crashes (2010-2014)



# Objectives and Actions

## ACTION TR 4.5

Identify appropriate levels of bicycle and car parking across the County.

### Bicycle Parking at Regional Rail Stations

Bike Parking at Station

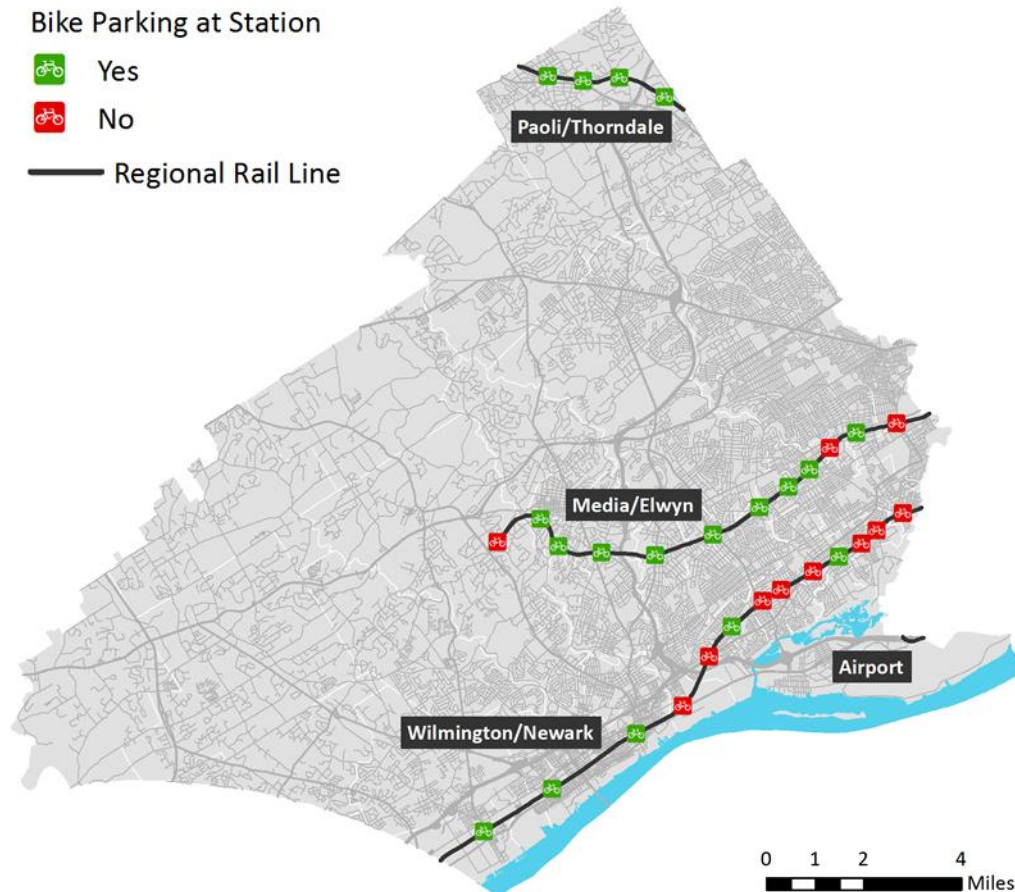


Yes



No

— Regional Rail Line



- **Inventory** car and **bike parking** conditions at popular destinations and transit nodes
- Identify disparities in parking needs and availability
- **Share findings with partners (including SEPTA)** to right-size parking and develop alternatives to parking expansion



# Delaware County Planning Department



Steven R. Beckley, AICP, Open Space and Trail Manager

<http://www.delcopa.gov/planning>