



February 9, 2019

**PRESENTED TO:**

2019 Philadelphia Western  
Suburbs Trail Summit

**PRESENTED BY:**

Jesse Buerk



**BICYCLE LTS**

**& CONNECTIVITY  
ANALYSIS**



**dvrpc**



## **Bike-Friendly Suburban Resurfacing Program**



# SE PA Suburban Bike Lanes Working Group



PennDOT



Suburban  
Counties



Bicycle  
Coalition



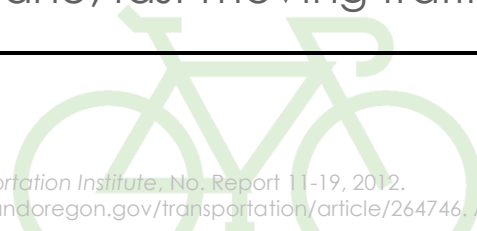
DVRPC



# Level of Traffic Stress (LTS)



| LTS | Comfortable Enough For<br>(Cyclist Type) | Characteristics   |
|-----|--|---|
| 1   | Most People                              | Lowest stress<br>Comfortable for most ages<br>and abilities                           |
| 2   | Interested, but<br>Concerned             | Suitable for most adults<br>Presenting little traffic stress                          |
| 3   | Enthusied and Confident                  | Moderate traffic stress<br>Comfortable for those already<br>biking in American cities |
| 4   | Strong and Fearless                      | High traffic stress<br>Multilane, fast moving traffic                                 |







SE R  
1400-840

Century 21

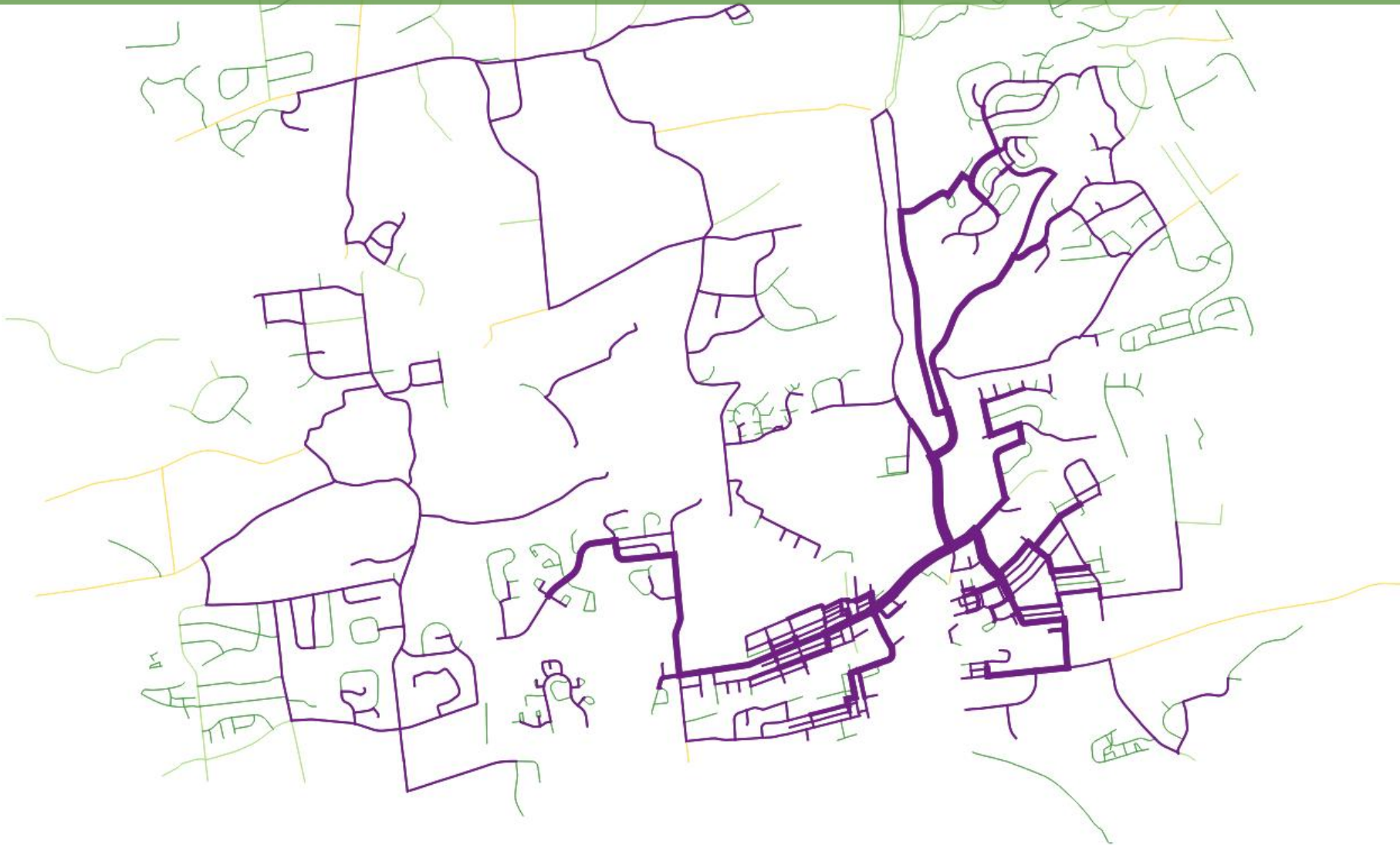
Con-way  
FREIGHT

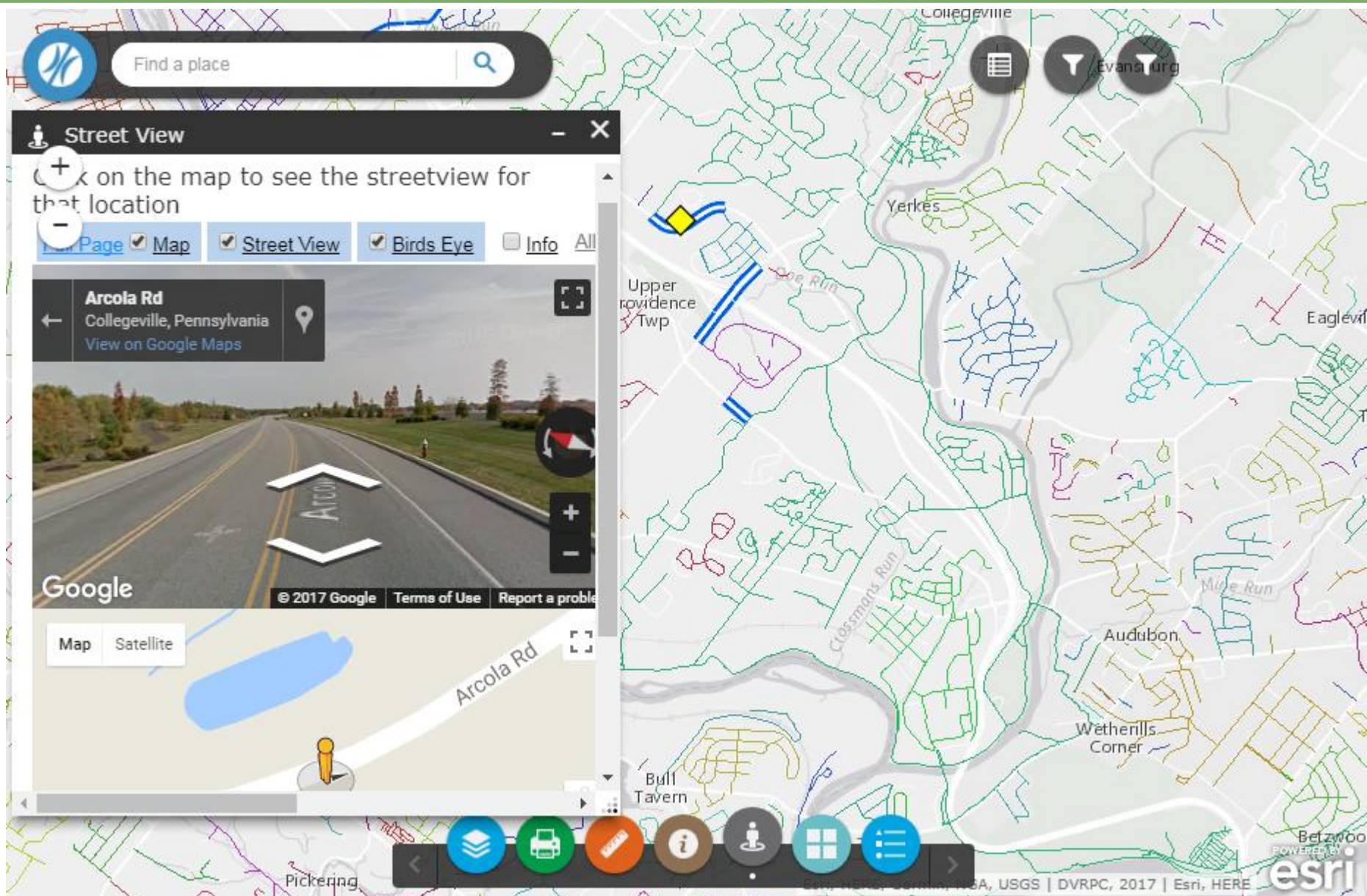
715-  
4176

STERLING



- LTS 1
- LTS 2
- LTS 3
- LTS 4



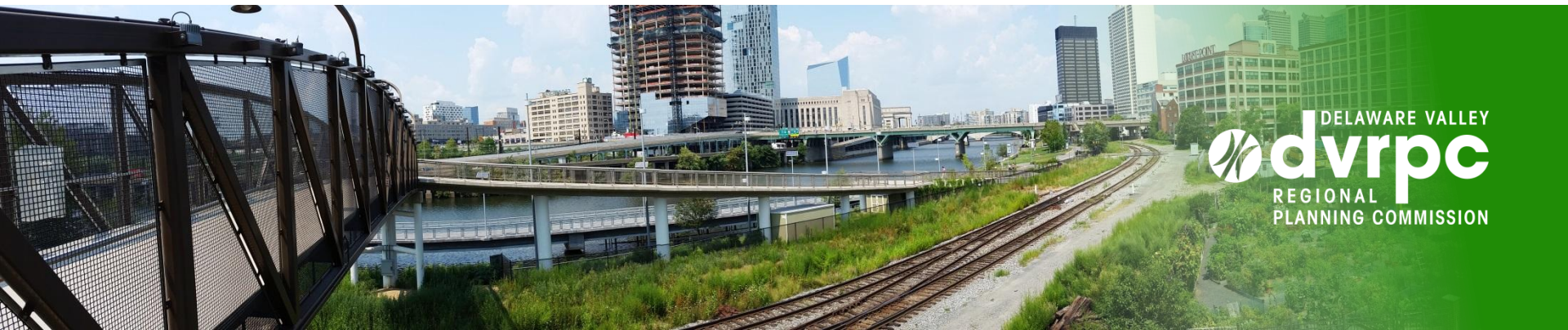


The screenshot displays a webmap interface with a search bar at the top left containing the text "Find a place" and a magnifying glass icon. Below the search bar is a "Street View" window. The window title is "Street View" and it contains a search bar with the text "Click on the map to see the streetview for that location". Below the search bar are several tabs: "Page", "Map", "Street View", "Birds Eye", "Info", and "All". The "Street View" tab is selected, showing a street view of "Arcola Rd" in "Collegeville, Pennsylvania". The street view image shows a road with a white arrow pointing forward and the word "Arcola" written on the road. Below the street view image are the "Map" and "Satellite" buttons. The main map area shows a residential area with streets and buildings. The map is overlaid with a network of colored lines representing bike stress levels. The map includes labels for "Upper Providence Twp", "Yerkes", "Collegeville", "Eagleville", "Audubon", "Wetherills Corner", "Bull Tavern", and "Pickering". The map also shows "Arcola Rd", "Crossmans Run", and "Mile Run". The map interface includes a search bar, a "Street View" window, and a bottom toolbar with various icons for navigation and map controls. The bottom right corner of the map shows the "esri" logo and the text "© 2017 Esri, DeLorme, Garmin, NOAA, USGS | DVRPC, 2017 | Esri, HERE".





## Bike-Friendly Resurfacing Program



# 5-Year Resurfacing Plan



**dvrpc**

| Project Num | Is active | SR                                    | limits from           | limits to                                | county     |
|-------------|-----------|---------------------------------------|-----------------------|--|------------|
| ST-95       | No        | SR4038 / Hanover St / Farmington Ave. | 8th Street/Oak Street | Borough line just north of Wilson Street | Montgomery |

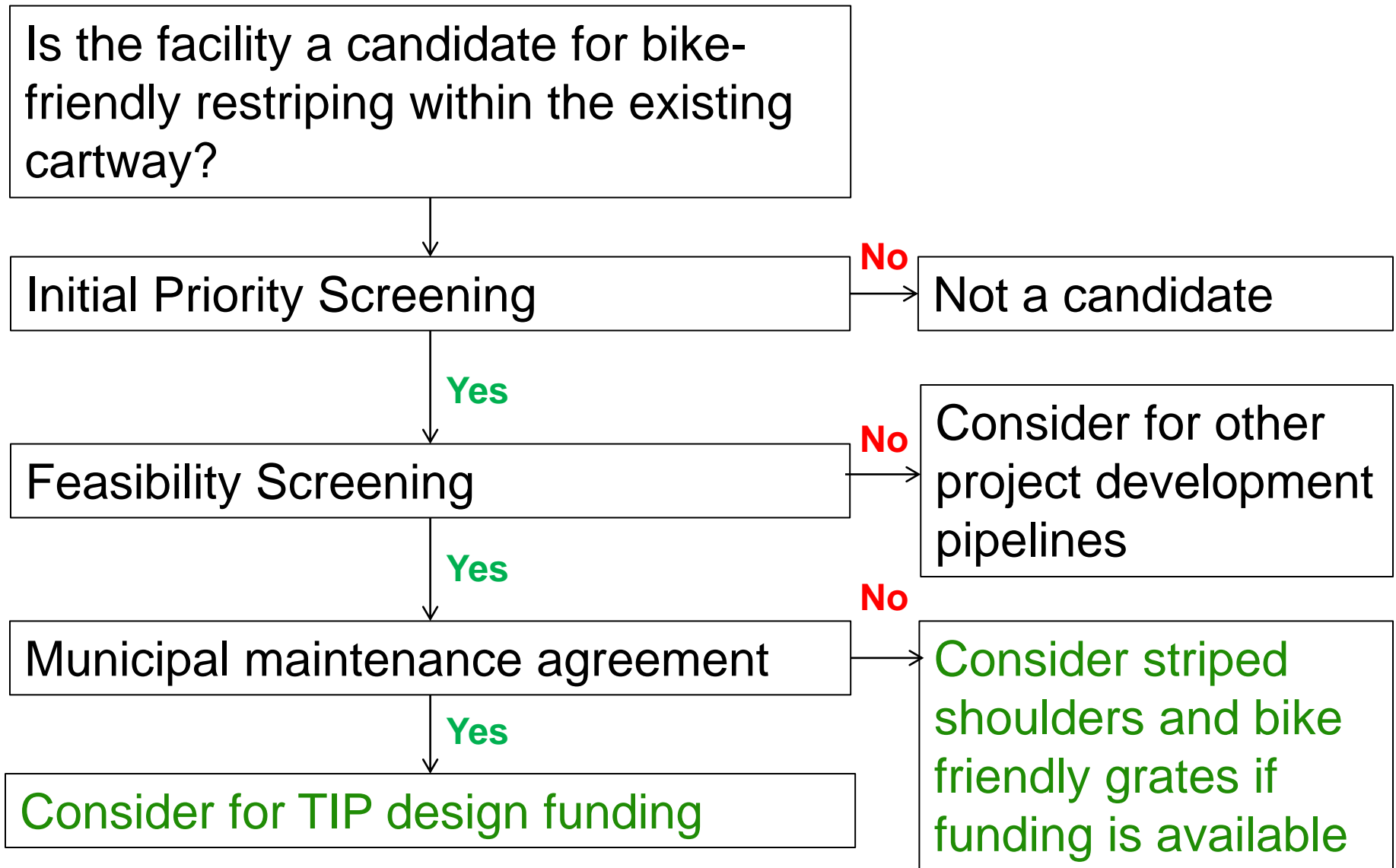
**PennDOT Project #:** ST-95    **Proposal Still Active?:** No    **Proposal Source:** DVRPC LTS screening  
**Project Let Date:** Anticipated Start of Work:  
**SR Name:** SR4038 / Hanover St / Farmington Ave.    **Limits From:** 8th Street/Oak Street    **Limits To:** Borough line just north of Wilson Street  
**County:** Montgomery    **Municipality(ies):** Pottstown Borough  
**Primary Bike treatment(s) Proposed:** Bike lanes  
**Bike treatment details/notes:** Stripe shoulder as bike lane in both directions  
**Existing Bike LTS:** 3    **Bike LTS if implemented:** 2  
**LTS priority:** Top 40%  
**Priority notes:**  
**Construction RE (or appropriate project contact):**  
**Does DVRPC or PennDOT Connects outreach confirm municipal interest?:** No, municipality supportive but does not wish to implement at this time.  
**Municipal Contact Person:** Justin Keller, Pottstown Borough Interim Township Manager  
**Confirmed Plans Designer:**  
**Does DVRPC screening support scope, and/or is a more detailed traffic engineering screening by PennDOT recommended?:** DVRPC screening support  
**Does further screening by PennDOT (or RK&K) support the proposed or alternative scope?:**  
**Does District Maintenance support the inclusion of bike facilities?:**  
**Date of communication with municipality providing template request letter:** 5/18/2018  
**Date of receipt by PennDOT of formal request letter from municipality:**  
**Date of issuance by PennDOT of formal response letter of agreement to municipality:**  
**Date assigned:**  
**Date completed:**  
**PennDOT notes:**  
**County notes:**  
**BCGP notes:**

|       |    |                    |           |                           |         |
|-------|----|--------------------|-----------|---------------------------|---------|
| ST-15 | No | 3070/Business US30 | Route 113 | Woodbine Road (or beyond) | Chester |
|-------|----|--------------------|-----------|---------------------------|---------|



# Collaborative Screening Process





# Bike Friendly Resurfacing - Examples



**PA 152 Main St (Chalfont) – 11/8/2018**



# Bike Friendly Resurfacing - Examples



## PA 663 - King Street (Pottstown) – 2017



# Bike Friendly Resurfacing - Examples



## Darby Road (Haverford Twp.) – 2019

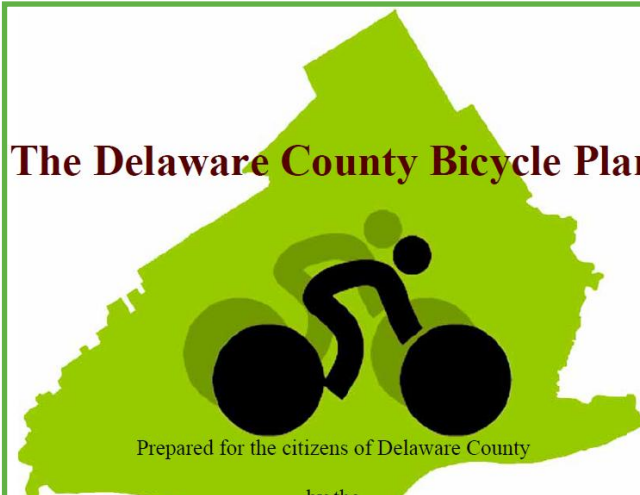


# How to get involved – Municipalities



- Coordinate with County & regional plans
- Develop local plans
- Evaluate PennDOT 5-year resurfacing plan for opportunities
- Participate in PennDOT Connects conversations (capital and maintenance projects)
- Pursue grant opportunities

## The Delaware County Bicycle Plan

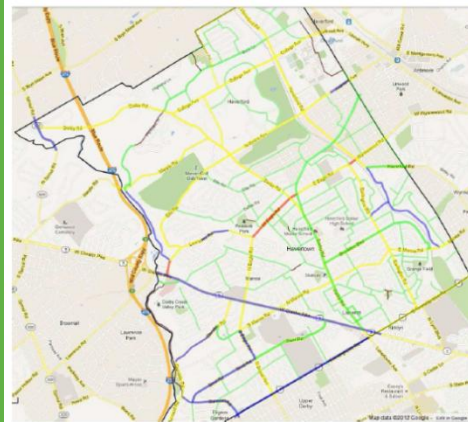


Prepared for the citizens of Delaware County

by the  
Delaware County Planning Department

### Haverford Bike Network – Present Conditions

This Google Maps overlay shows the present cycling conditions in Haverford Township, determined by using a mathematical Bicycle Level of Service analysis model. This model assigns road segments a grade of "A" through "F" based on design factors, speed limits, traffic levels and so on. Generally, all local residential streets within neighborhoods are "bikeable." Some of these "minor roads" are highlighted below for cyclists who wish to avoid the major roads. Those shown work especially well by crossing major roads at traffic lights, crosswalks or direct crossings; by serving as parallel alternatives to major roads; or by providing a suitable route where major roads do not.





# How to get involved – Advocates



- Help identify local priorities
- Evaluate PennDOT 5-year resurfacing plan for opportunities
  - Bicycle Coalition of Greater Philadelphia web map & Google Form
- Participate in local efforts
- Let your municipal officials know you care
- Ride your bicycle! (safely)

The image shows a screenshot of a web application. On the left is a sidebar menu for the 'PENNDOT 5 Year Plan' webmap, listing counties and years with checkboxes. On the right is a map of the Philadelphia area with purple lines indicating bike lane requests. Below the map is a Google Form titled 'PennDOT 5-Year Plan Bike Lane Request' with instructions and a form field for an email address.

**PENNDOT 5 Year Plan**

- Chester County 2020
- Montgomery County 2020
- Bucks County 2020
- Delaware County 2020
- Bucks County 2019
- Chester County 2019
- Delaware County 2019
- Montgomery County 2019
- Bucks County 2021
- Chester County 2021

### PennDOT 5-Year Plan Bike Lane Request

The Bicycle Coalition of Greater Philadelphia (BCGP) has created this form to enable road users to request bike lanes in the following Pennsylvania counties: Bucks, Chester, Delaware and Montgomery. The requested project must be listed on the 5-Year Plan for your county in years 2020-2023. It is too late to request bike lanes for paving year 2018. You should only request a bike lane from the paving plan because Pennsylvania Department of Transportation (PennDOT) must prioritize building new bike facilities during the repaving of a given roadway to ensure that public resources are used efficiently.

Your request will be depicted on the webmap that BCGP maintains for the public, and will be referred to the 'Suburban Bike Lanes Working Group,' which consists of planning staff from each county, Delaware Valley Regional Planning Commission, PennDOT, and BCGP.

This form is intended only for requesting bike lanes on roadways that PennDOT maintains. For information on how to get bike lanes on county, local or private roads, contact [leonard@bicyclecoalition.org](mailto:leonard@bicyclecoalition.org)

\* Required

Email address \*

Your email \_\_\_\_\_

Is your request shown on the 2019/2020 webmap that was created by BCGP? \*

If not, but it is on the list for future years, you can request it at a future time. If your request is not about a project on the PennDOT 5-year paving plan list, we will contact you with tips on how to get



# Questions?

Jesse Buerk  
Manager,  
Capital Project  
Development  
jbuerk@dvrpc.org



## BICYCLE LTS & CONNECTIVITY ANALYSIS



[www.dvrpc.org/webmaps/BikeStress](http://www.dvrpc.org/webmaps/BikeStress)

