

Regional Trail Summit



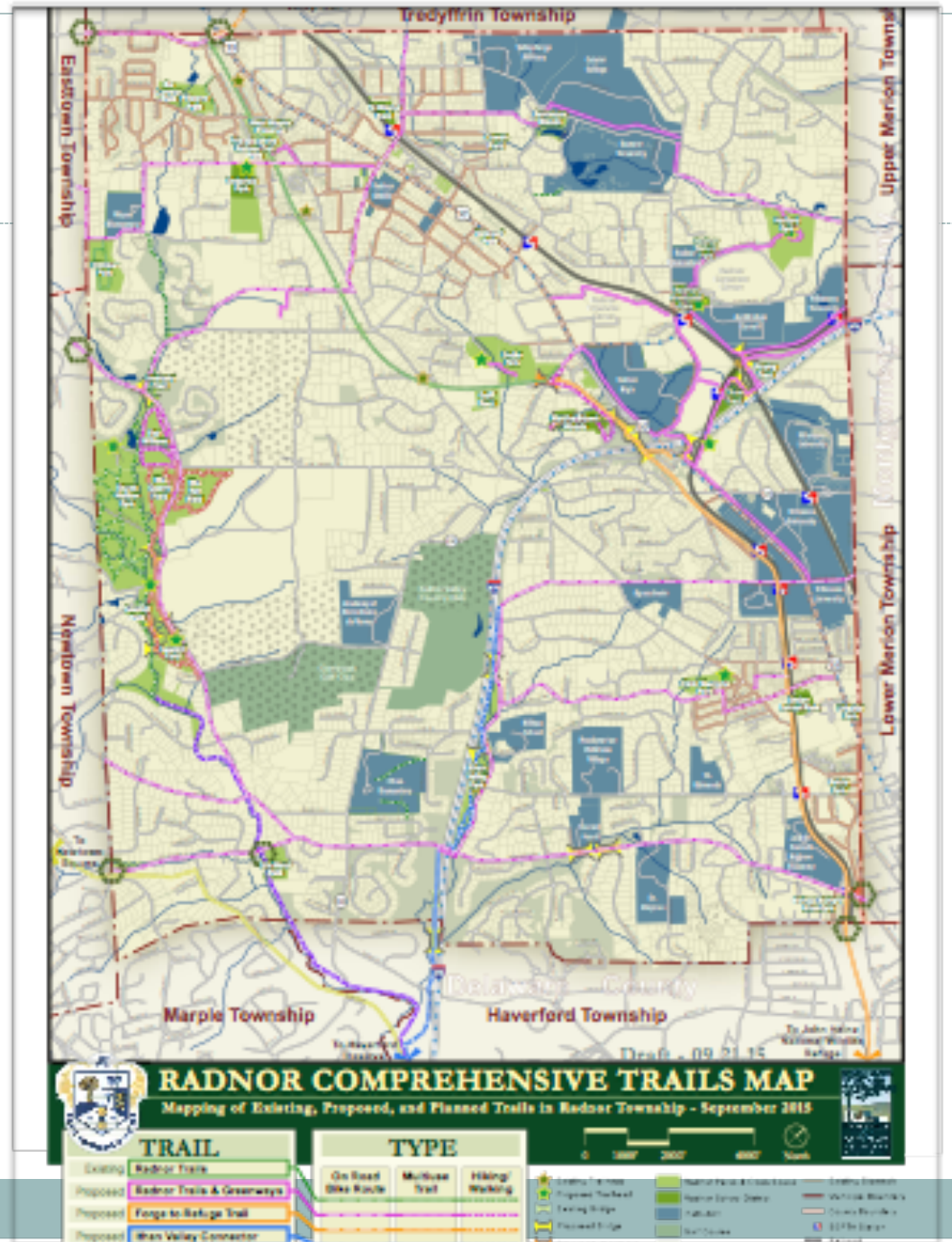
FEBRUARY 10, 2018

**LAURA LUKER AND GRETCHEN GROEBEL
RADNOR CONSERVANCY**

**RADNOR TOWNSHIP
TRAIL PROJECTS**

Comprehensive Trails Map

- From the *Greenways & Open Space Network Plan* came a **Comprehensive Trails Map** (presented in 2015)
- 4 major trail projects were identified and prioritized.



4 Trail Projects



1. Radnor Station to Harford Park

2. TAP Trails (3 Segments)

- West Wayne Ave to the Radnor Trail
- Penn Medicine / Radnor High School Spoke
- Villanova Univ. to Ithan Valley Park to Haverford Reserve.

3. Radnor Extension Trail

4. Darby Paoli Multi-Use Park Trail (formerly Ardrossan Park Trail)

Radnor Station to Harford Park



- Connects Regional Rail passengers to Radnor Corporate Center, Main Line School Night and Harford Dog Park.
- **Status:** Working with Brandywine Realty Trust to obtain easements for trail
- Waiting on survey
- Funded by Township Bond



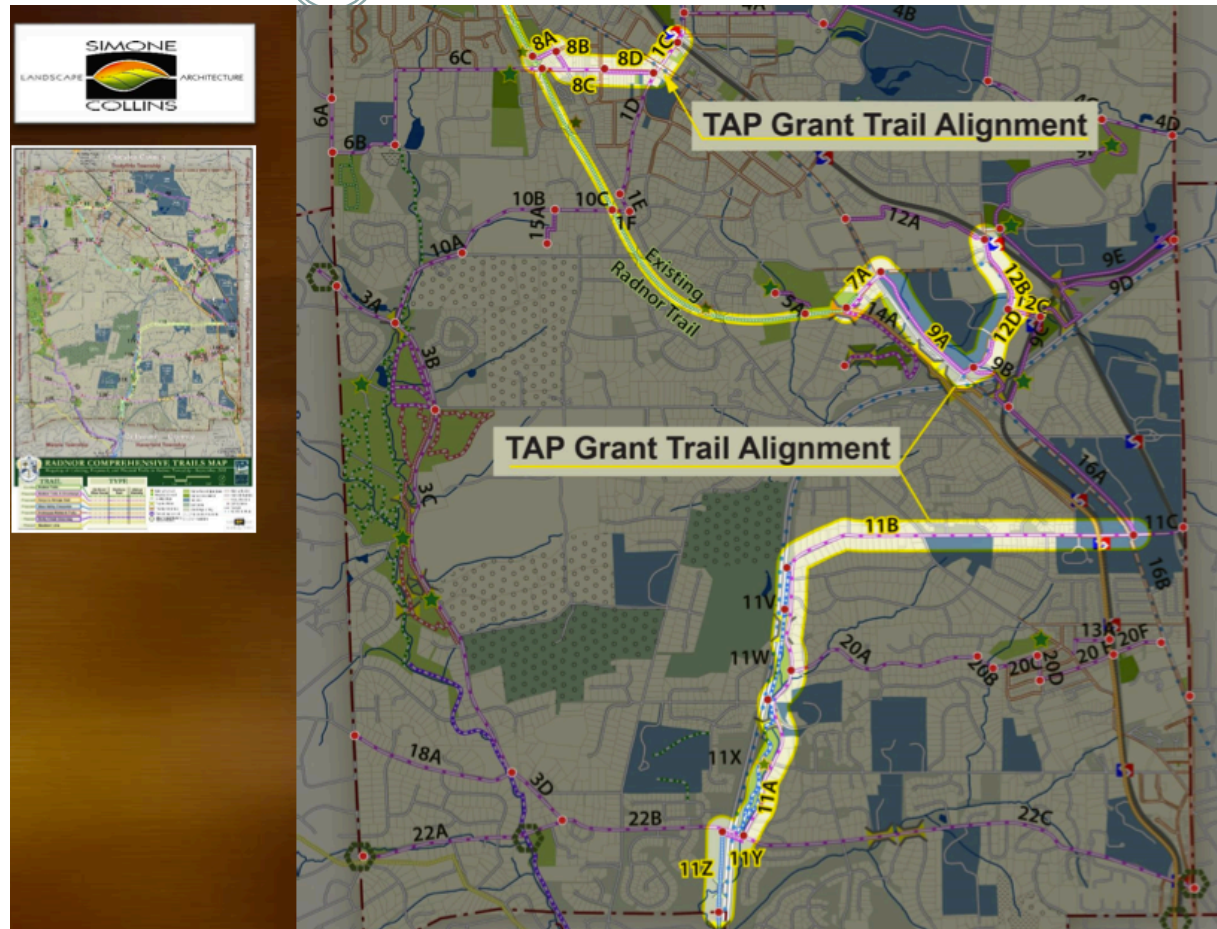
TAP Trails

- 3 Segments

- West Wayne Ave to Radnor Trail

- Penn Medicine / Radnor High School Spoke

- Villanova Univ. to Ithan Valley Park to Haverford Reserve.



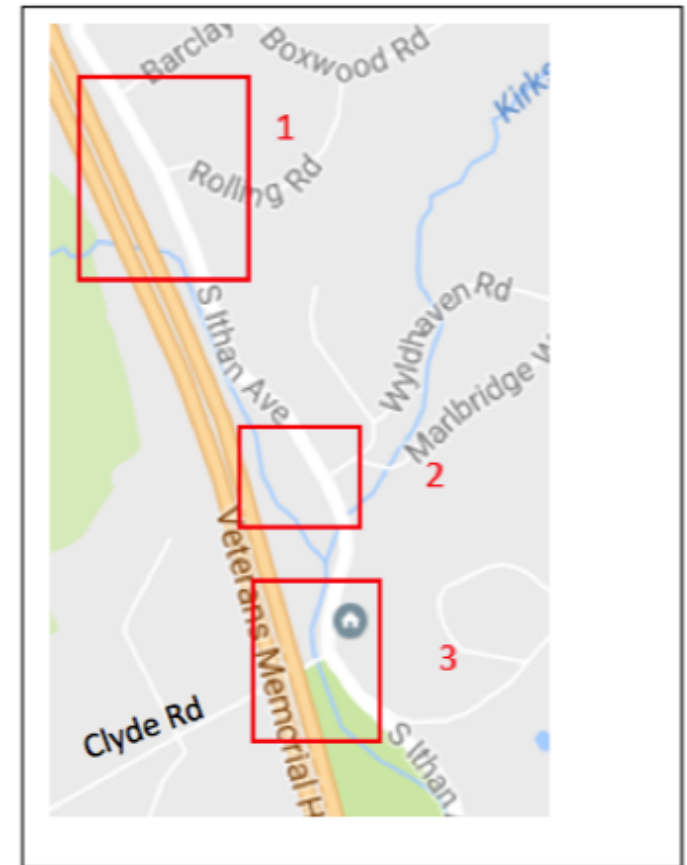
TAP Grant Trail Alignments (3)



- **West Wayne Connector** will connect downtown Wayne to the Radnor Trail.
- **Penn Medicine / Radnor High School Spoke** corner of RT 30 & Radnor Chester Rd (paralleling High School & KOP Rd. Up KOP Rd. to Radnor Train Station)
- **The Villanova Univ. Spur Trail on Rt.30** along the length of Villanova's campus will connect to Ithan Ave then to Ithan Valley Park extending to Haverford Township. These spurs and connections are part the greater Greenways Open Space Plan.
- **Consultant:** Simone Collins Landscape Architects
- **Status:** Design in preliminary stages, meeting with School District and Township. Solicit bids end of 2018 for engineering
- **Funding:** Grants awarded 2017 (TAP, DCNR, DCED)

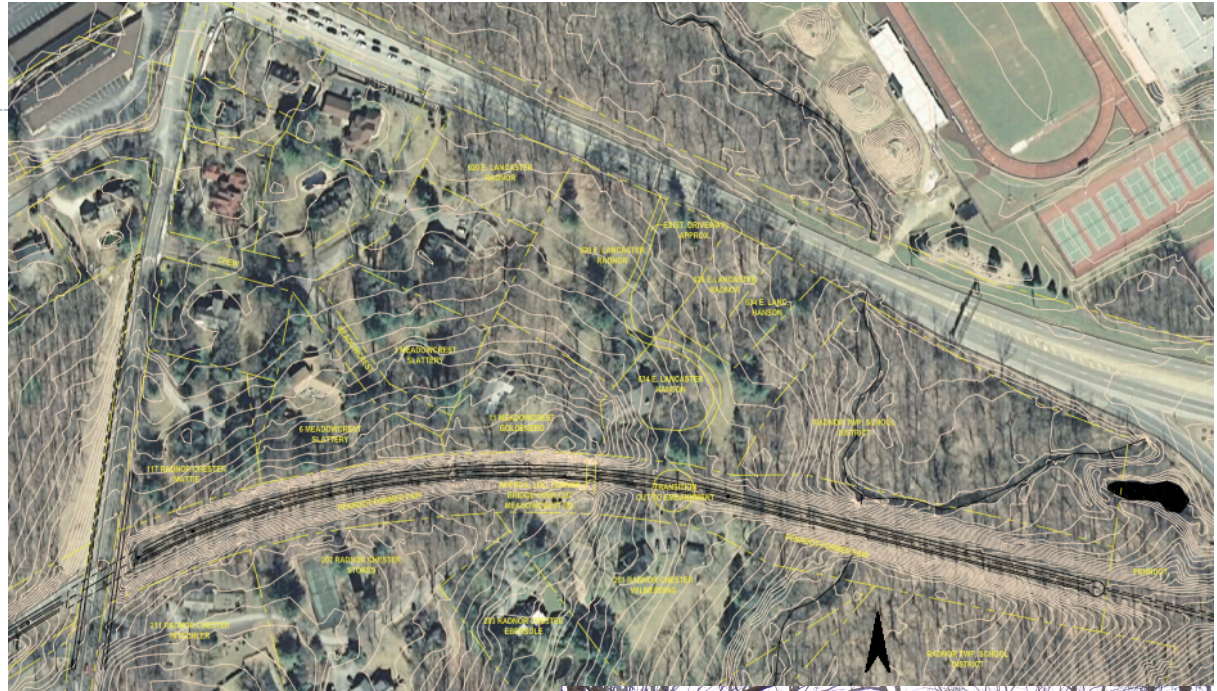
Ithan Valley Park – Walking Trails

- North Section of Ithan Valley Park encompasses 7 acres of land along Rt 476 with Ithan Creek bisecting it.
- Design by Simone Collins
- 1. Entrance at Barclay Rd. stop sign with trail running south to point where Ithan Creek enters from tunnel under Rt 476, requiring a creek crossing. Trail continues south towards Clyde Rd.
- 2. Entrance at Wyldhaven Rd. -trail running westerly to creek, requiring a crossing, then trail links to the north-south trail.
- 3. Trail running south crossing Clyde Road, continuing into the park
- Status: Preliminary Design, Working with Simone Collins, PennDOT and Meliora Design



Radnor Trail Extension

- Trail will go under Radnor Chester Rd and extend a third-mile further east to the Blue Route. This extension is proposed in the future to link with the SEPTA 100 trail which is part of The Circuit Trails.
- **Consultant:** Campbell Thomas & Co. Kee Landscaping and Gilmore Associates Engineers.
- **Status:** Survey complete, complicated by utilities and access to site around culvert. Anticipated construction early 2019
- **Funding:** \$500K from bond, seeking 1/2 from grants.



Darby Paoli Multi-use Trail

- **The Darby Paoli Multi-use Trail** will connect Willows Park through Skunk Hollow and continue along Darby Paoli Rd. In the future, connect to Bryn Mawr Ave.
- **Consultant:** Natural Lands Trust (NLT) Rick Tralies. Meliora Design awarded engineering.
- **Status:** Surveying for wetlands and bridges, public meetings at Township to discuss engineering
- Approx. engineering completion end of 2018
- Design and permitting are funded. Balance will be grant funded.

