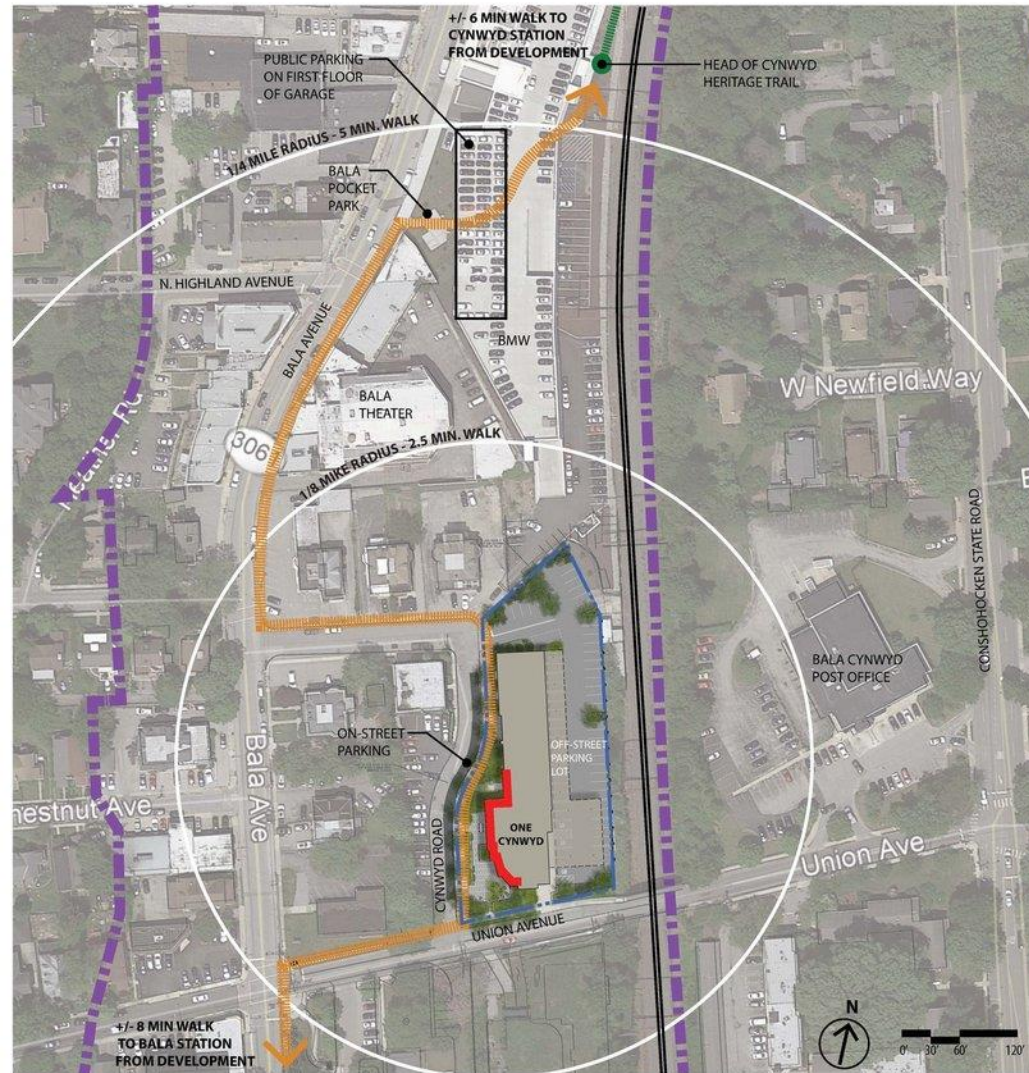


Cynwyd Heritage Trail Update 2018



placemaking



THROUGH A CONTEXT-BASED APPROACH TO MIXED-USE DESIGN, ONE CYNWYD REINFORCES A WELCOMING AND DISTINCTIVE SENSE OF PLACE IN BALA VILLAGE DISTRICT FOR RESIDENTS, VISITORS AND WORKERS.



VISUAL CHARACTER AND IDENTITY OF BALA VILLAGE DISTRICT IS ENHANCED THROUGH THOUGHTFUL MASSING AND SCALE OF ONE CYNWYD BUILDING AND LANDSCAPE DESIGN OF PUBLIC GATHERING SPACE. ADDITION OF A VIBRANT AND DYNAMIC NEW PUBLIC PARK, IN TANDEM WITH NEW SHOPS & DWELLINGS, CREATE A MORE PEDESTRIAN-ORIENTED GREEN DISTRICT.



USE OF HIGH-QUALITY BUILDING MATERIALS + CONSIDERATION OF EXISTING CULTURAL AND RECREATIONAL RESOURCES STRENGTHENS STANDARD OF ARCHITECTURE AND DESIGN WITHIN THE COMMUNITY.



BUFFER REDUCTION WILL NOT ADVERSELY AFFECT PUBLIC HEALTH, SAFETY, AND WELFARE WITH RESPECT TO DRAINAGE, LIGHT, NOISE, AIR QUALITY, NATURAL FEATURES OR AESTHETIC CHARACTERISTICS OF NEIGHBORHOOD.

transit-oriented development



ONE CYNWYD PROMOTES LIVABILITY OF BALA VILLAGE DISTRICT BY PROVIDING DWELLINGS AND SHOPS IN CLOSE PROXIMITY TO WORKPLACES. IT ENCOURAGES PEDESTRIAN CONNECTIONS TO BALA VILLAGE THEREBY IMPROVING NEIGHBORHOOD WALKABILITY.



DEVELOPMENT CREATES A VIABLE BLEND OF LAND USES FOR COMMUNITY WHILE STILL PROVIDING SUFFICIENT ON- AND OFF-STREET PARKING. ATTRACTIVE, UNOBTRUSIVE AND CONVENIENT OFF-STREET PARKING FACILITIES REDUCES ON-STREET CONGESTION.



OVERALL IMPACT OF ONE CYNWYD ON RESIDENTIAL AREAS IS FAVORABLE AS THIS TRANSIT-ORIENTED, MIXED-USE DEVELOPMENT PROMOTES ECONOMIC VIABILITY OF DISTRICT, STIMULATES HOME VALUES AND CREATES PUBLIC AMENITIES.



SHARED PARKING AND EASY ACCESS TO ALTERNATE MODES OF TRANSPORT FROM ONE CYNWYD, INCLUDING RAIL, BUS, CYCLING AND WALKING, REDUCES NEIGHBORHOOD TRAFFIC CONGESTION AND DISCOURAGES DEPENDENCE ON CARS FOR DAILY NEEDS.

LEGEND



BALA VILLAGE DISTRICT BOUNDARY



ONE CYNWYD DEVELOPMENT PROPERTY LINE



PEDESTRIAN ROUTE



CYNWYD HERITAGE TRAIL



RETAIL FRONTAGE



SEPTA CYNWYD LINE



ON-STREET PARKING



NEW RESIDENTIAL / MIXED USE BUILDING



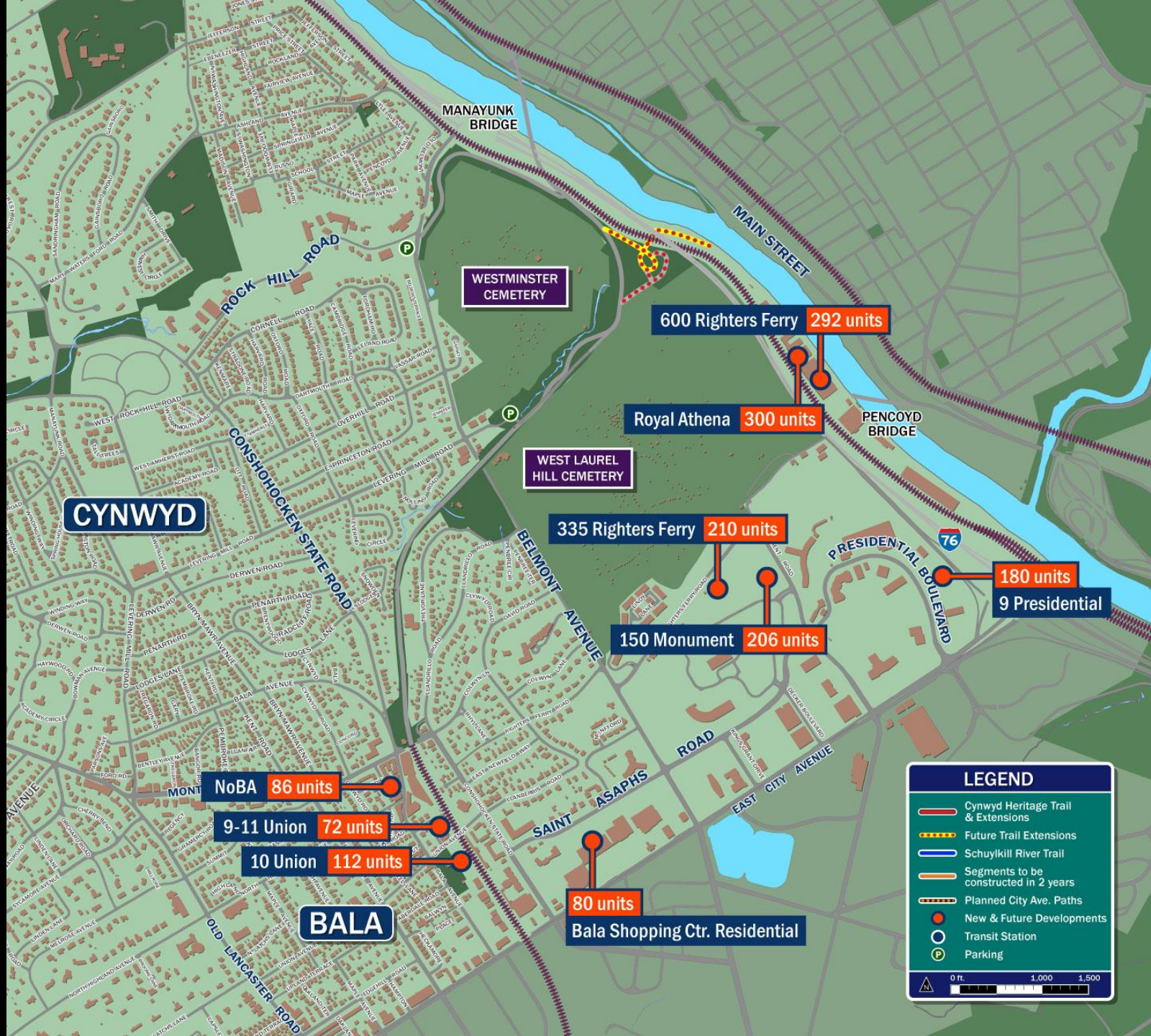
PUBLIC GATHERING SPACE



Prior to Development



Projected Development

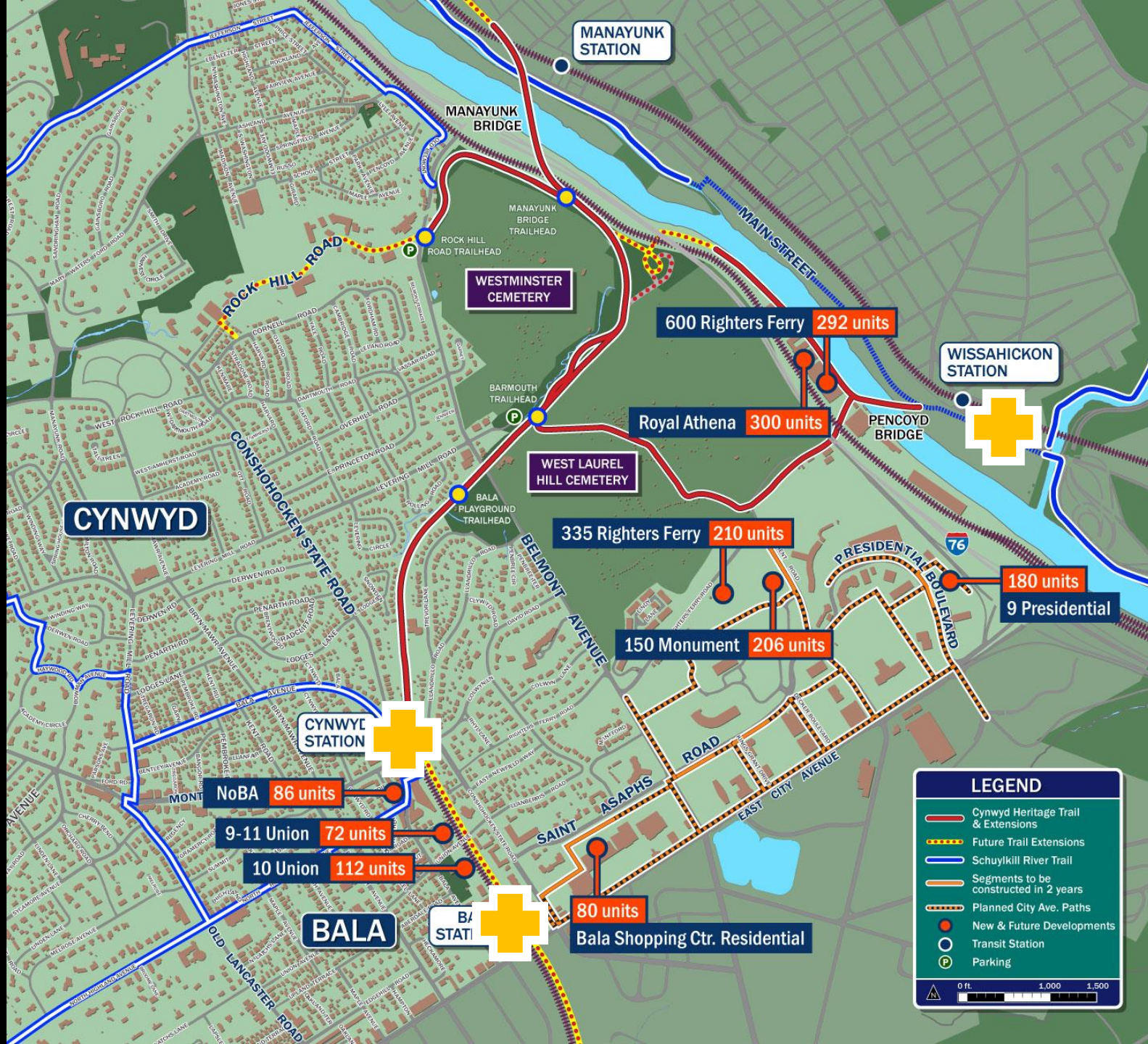


This map illustrates the Schuylkill River Trail and its extensions through Cynwyd, PA. The trail is shown in red, with future extensions in yellow dashed lines. Key transit stations include Manayunk Station, Wissahickon Station, Cynwyd Station, and Bala Station. The map also highlights various transit developments and their unit counts: 600 Righters Ferry (292 units), Royal Athena (300 units), 335 Righters Ferry (210 units), 150 Monument (206 units), 9 Presidential (180 units), NoBA (86 units), 9-11 Union (72 units), 10 Union (112 units), and Bala Shopping Ctr. Residential (80 units). The map includes a legend for the trail types, transit stations, and developments, as well as a scale bar and north arrow.

Transit Development	Units
600 Righters Ferry	292
Royal Athena	300
335 Righters Ferry	210
150 Monument	206
9 Presidential	180
NoBA	86
9-11 Union	72
10 Union	112
Bala Shopping Ctr. Residential	80



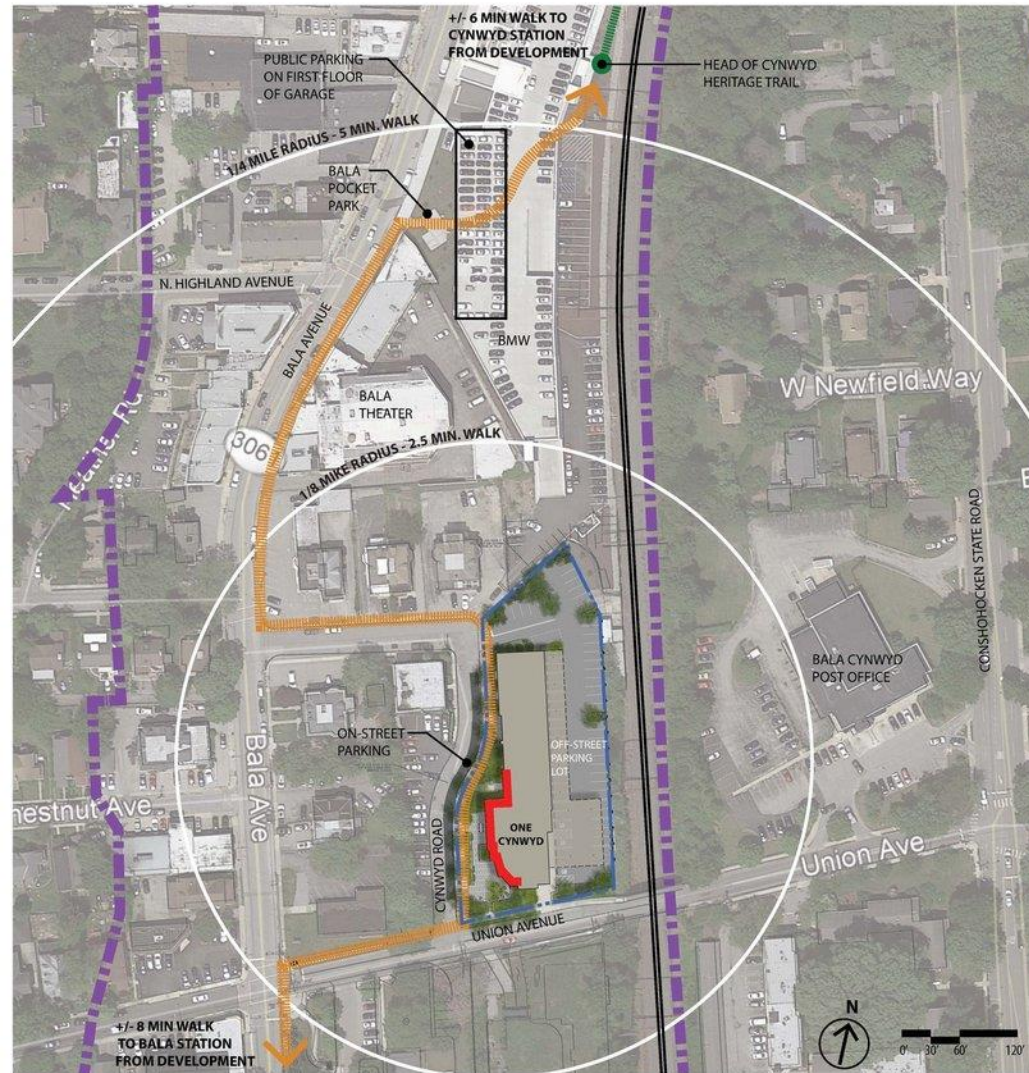
Access Improvements in Coordination with Development







Cynwyd Heritage Trail Update 2018



placemaking



THROUGH A CONTEXT-BASED APPROACH TO MIXED-USE DESIGN, ONE CYNWYD REINFORCES A WELCOMING AND DISTINCTIVE SENSE OF PLACE IN BALA VILLAGE DISTRICT FOR RESIDENTS, VISITORS AND WORKERS.



VISUAL CHARACTER AND IDENTITY OF BALA VILLAGE DISTRICT IS ENHANCED THROUGH THOUGHTFUL MASSING AND SCALE OF ONE CYNWYD BUILDING AND LANDSCAPE DESIGN OF PUBLIC GATHERING SPACE. ADDITION OF A VIBRANT AND DYNAMIC NEW PUBLIC PARK, IN TANDEM WITH NEW SHOPS & DWELLINGS, CREATE A MORE PEDESTRIAN-ORIENTED GREEN DISTRICT.



USE OF HIGH-QUALITY BUILDING MATERIALS + CONSIDERATION OF EXISTING CULTURAL AND RECREATIONAL RESOURCES STRENGTHENS STANDARD OF ARCHITECTURE AND DESIGN WITHIN THE COMMUNITY.



BUFFER REDUCTION WILL NOT ADVERSELY AFFECT PUBLIC HEALTH, SAFETY, AND WELFARE WITH RESPECT TO DRAINAGE, LIGHT, NOISE, AIR QUALITY, NATURAL FEATURES OR AESTHETIC CHARACTERISTICS OF NEIGHBORHOOD.

transit-oriented development



ONE CYNWYD PROMOTES LIVABILITY OF BALA VILLAGE DISTRICT BY PROVIDING DWELLINGS AND SHOPS IN CLOSE PROXIMITY TO WORKPLACES. IT ENCOURAGES PEDESTRIAN CONNECTIONS TO BALA VILLAGE THEREBY IMPROVING NEIGHBORHOOD WALKABILITY.



DEVELOPMENT CREATES A VIABLE BLEND OF LAND USES FOR COMMUNITY WHILE STILL PROVIDING SUFFICIENT ON- AND OFF-STREET PARKING. ATTRACTIVE, UNOBTRUSIVE AND CONVENIENT OFF-STREET PARKING FACILITIES REDUCES ON-STREET CONGESTION.



OVERALL IMPACT OF ONE CYNWYD ON RESIDENTIAL AREAS IS FAVORABLE AS THIS TRANSIT-ORIENTED, MIXED-USE DEVELOPMENT PROMOTES ECONOMIC VIABILITY OF DISTRICT, STIMULATES HOME VALUES AND CREATES PUBLIC AMENITIES.



SHARED PARKING AND EASY ACCESS TO ALTERNATE MODES OF TRANSPORT FROM ONE CYNWYD, INCLUDING RAIL, BUS, CYCLING AND WALKING, REDUCES NEIGHBORHOOD TRAFFIC CONGESTION AND DISCOURAGES DEPENDENCE ON CARS FOR DAILY NEEDS.

LEGEND



BALA VILLAGE DISTRICT BOUNDARY



ONE CYNWYD DEVELOPMENT PROPERTY LINE



PEDESTRIAN ROUTE



CYNWYD HERITAGE TRAIL



RETAIL FRONTAGE



SEPTA CYNWYD LINE



ON-STREET PARKING



NEW RESIDENTIAL / MIXED USE BUILDING



PUBLIC GATHERING SPACE





CYNYDD HERITAGE TRAIL

WEST LAUREL HILL TRAIN STATION



HERITAGE PARK
The West Laurel Hill Train Station is a historic building that served the community for many years. It is a fine example of the architecture of the early 20th century. The station is located on the West Laurel Hill Cemetery grounds, which are a National Historic Landmark. The station is a fine example of the architecture of the early 20th century. The station is located on the West Laurel Hill Cemetery grounds, which are a National Historic Landmark.



Before the advent of parks, the only great source of green space for the general public could rise and picnic were cemeteries. The most popular of the early maps along the line and generated much business for the cemetery. The city dwellers seeking a rural setting, the railroad station platform.

After passengers disembarked at the station platform, the main platform where another hundred feet down the road to the freight cars. The first great train curved into the hill that lead up to a side entrance of the cemetery to staff the hill.

The West Laurel Hill Station was decommissioned and dismantled in 1909 to make way for the new station at Rosemont, which was located to serve the West Laurel Hill Cemetery and the newly incorporated Rosemont Cemetery.



The information on this page is provided for informational purposes only. It is not intended to be used as a substitute for professional advice. The information on this page is provided for informational purposes only. It is not intended to be used as a substitute for professional advice.

The information on this page is provided for informational purposes only. It is not intended to be used as a substitute for professional advice. The information on this page is provided for informational purposes only. It is not intended to be used as a substitute for professional advice.





CYNWYD HERITAGE TRAIL



CYNWYD STATION TRAILHEAD



ABOUT THE FRIENDS OF THE CYNWYD TRAIL

"Please Build this Trail in My Backyard"

The Cynwyd Heritage Trail could not have been developed without the volunteer support and the political advocacy of the residents of Sole Cynwyd, Lower Merion Township and Maratunk. Between April, 2008 and April, 2013, community volunteers transformed a forgotten rail corridor into a rough trail by removing rocks, litter, metal, invasive species and even abandoned cars. Conservatively speaking, volunteer efforts have contributed about half a million dollars of value to the trail and allowed the trail to become what it is today.

In 2009, residents of Sole Cynwyd formed the Friends of the Cynwyd Heritage Trail, a non-profit community organization which works with Lower Merion Township to maintain and develop the trail. The Friends coordinate volunteer workdays, plantings and events, and most importantly help to provide the Township Parks and Recreation Department with supplemental maintenance and trail programming. A major focus of the Friends' efforts is to replace the aggressive, invasive species that spring up along the former rail line with attractive, low maintenance native plants to support a diversity of native caterpillars, butterflies and birds.

CYNWYD HERITAGE TRAIL CREDITS

Design and Construction

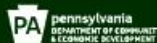
Studio Bryan Harris and Studio Gola - Design
Perroni Associates - Engineering
Lower Merion Township - Project Coordination & Planning
Mid Atlantic Site Constructors - Construction: Main Trail and Burnmouth Trailhead
Pioneer Concrete - Construction: Sole Cynwyd Park Trailhead
Marino Corporation - Construction: Cynwyd Station Trailhead
Ong Pedersen - Invasive Signage and Map Design
Pawnee Graphics - Inexpensive Signage Fabrication

Funding and Resources

Lower Merion Township - Planning, Property Acquisition, Engineering and Construction
Montgomery County Open Space Program - Main Trail Design and Construction
SDTA - Land Acquisition and Technical Assistance
Pennsylvania Department of Conservation and Natural Resources - Construction: Sole Cynwyd Park Trailhead
Pennsylvania Department of Community and Economic Development - Construction: Schuylkill Rock Overlook
Pennsylvania Department of Transportation - Construction: Cynwyd Station Trailhead
Friends of the Cynwyd Heritage Trail
Lower Merion Horticulture Society
Pennsylvania Horticultural Society
PICO
West Laurel Hill Cemetery - Land Acquisition, Site Preparation, Boulder and so much more
Main Line BMW - Boulder for Schuylkill Rock Overlook
Neighborhood Culture & Arts Council
Society of Lower Merion Township

The Cynwyd Heritage Trail Interpretive Signage Project was supported in part by a Preserve America grant administered by the National Park Service, Department of the Interior.

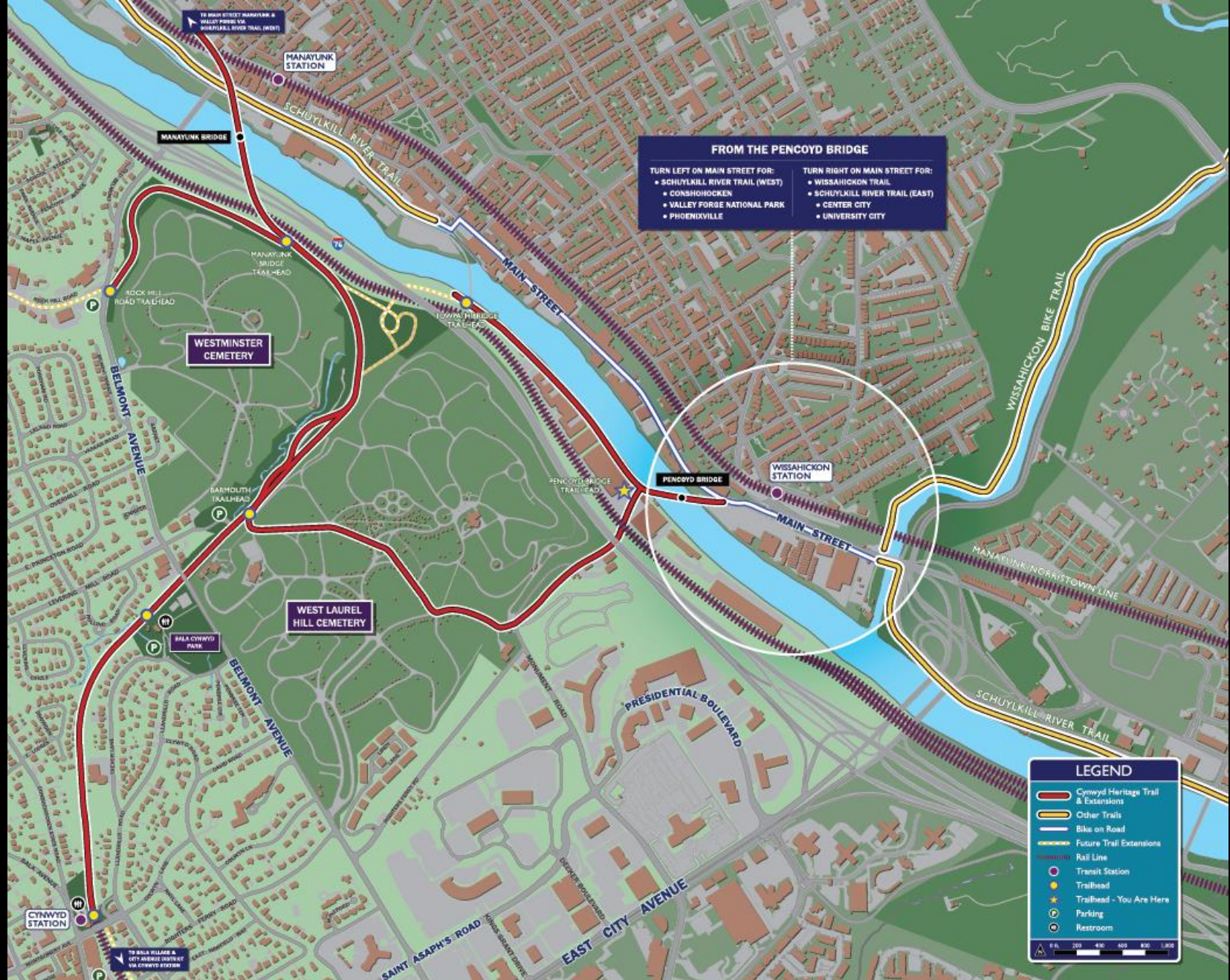
And thanks to the countless volunteers and local businesses that supported the dream of converting a weed infested, overgrown, abandoned rail corridor into our Cynwyd Heritage Trail.



New Trail Map Sign



Trail Map Detail



Pencoyd Bridge Connection



CYNWYD HERITAGE TRAIL



REGIONAL TRAIL NETWORK

THE CIRCUIT TRAILS

LOWER MERION, MANAYUNK, CENTER CITY,
VALLEY FORGE AND BEYOND...



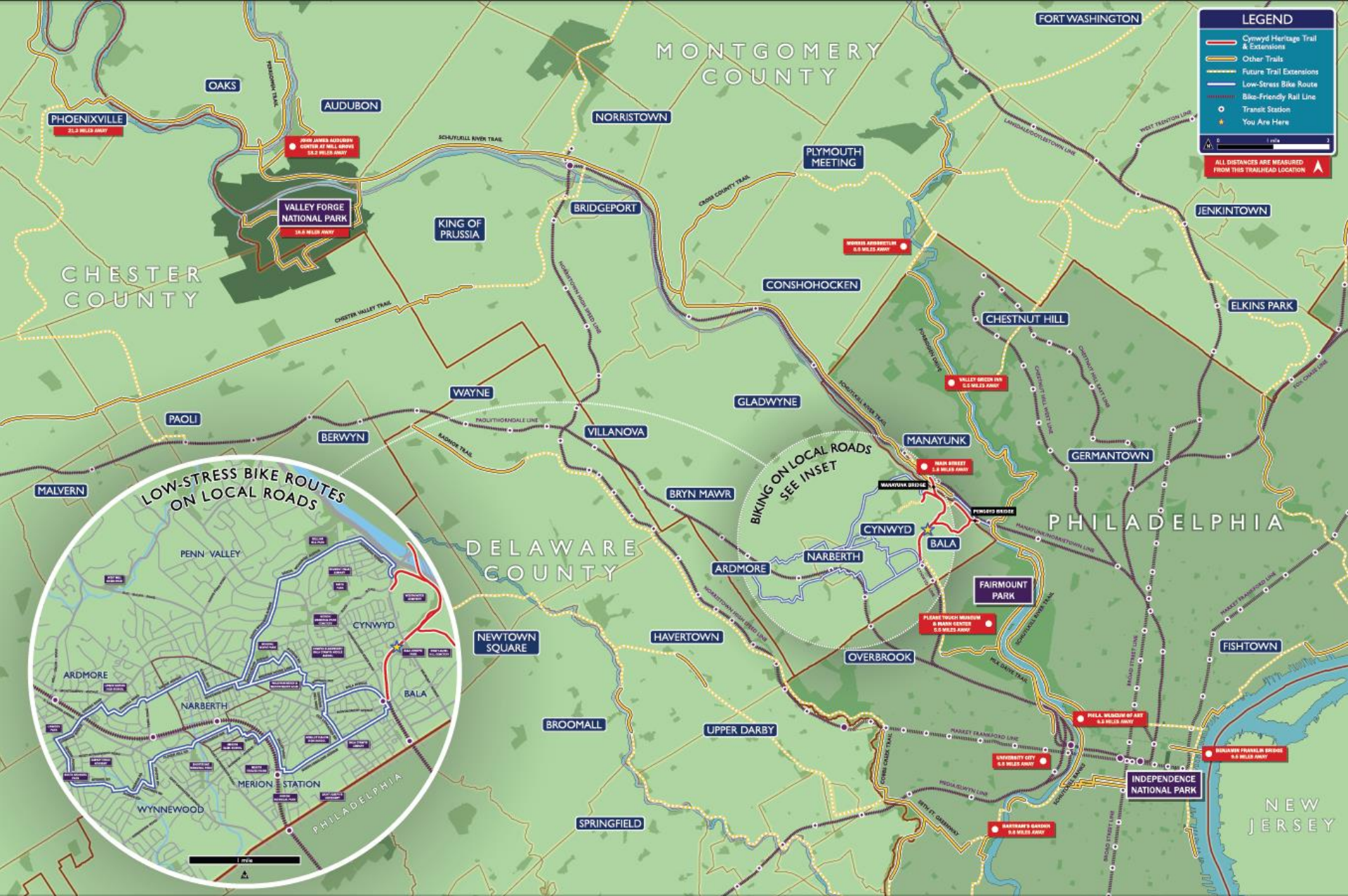
SCHUYLKILL RIVER
NATIONAL & STATE HERITAGE AREA

From its inception in 2006, the goal of the 1.8 mile long Cynwyd Heritage Trail has been to link Lower Merion Township with the regional trail network and to also provide a variety of bike and pedestrian linkages to commercial, recreational, cultural and employment nodes across the Delaware Valley. On the Lower Merion side of the Schuylkill River, the CHT already links to 13 miles of paved trails through West Laurel Hill Cemetery, and the CHT will eventually extend east another mile along the Schuylkill River through the Royal Athlona site. The Cynwyd Trail is also planned to extend eastward to 52nd and Parkside Avenue in Philadelphia as a Rail with Trail project. The Parkside connection will provide connections to the Mann Music Center, Please Touch Museum and West Fairmount Park.

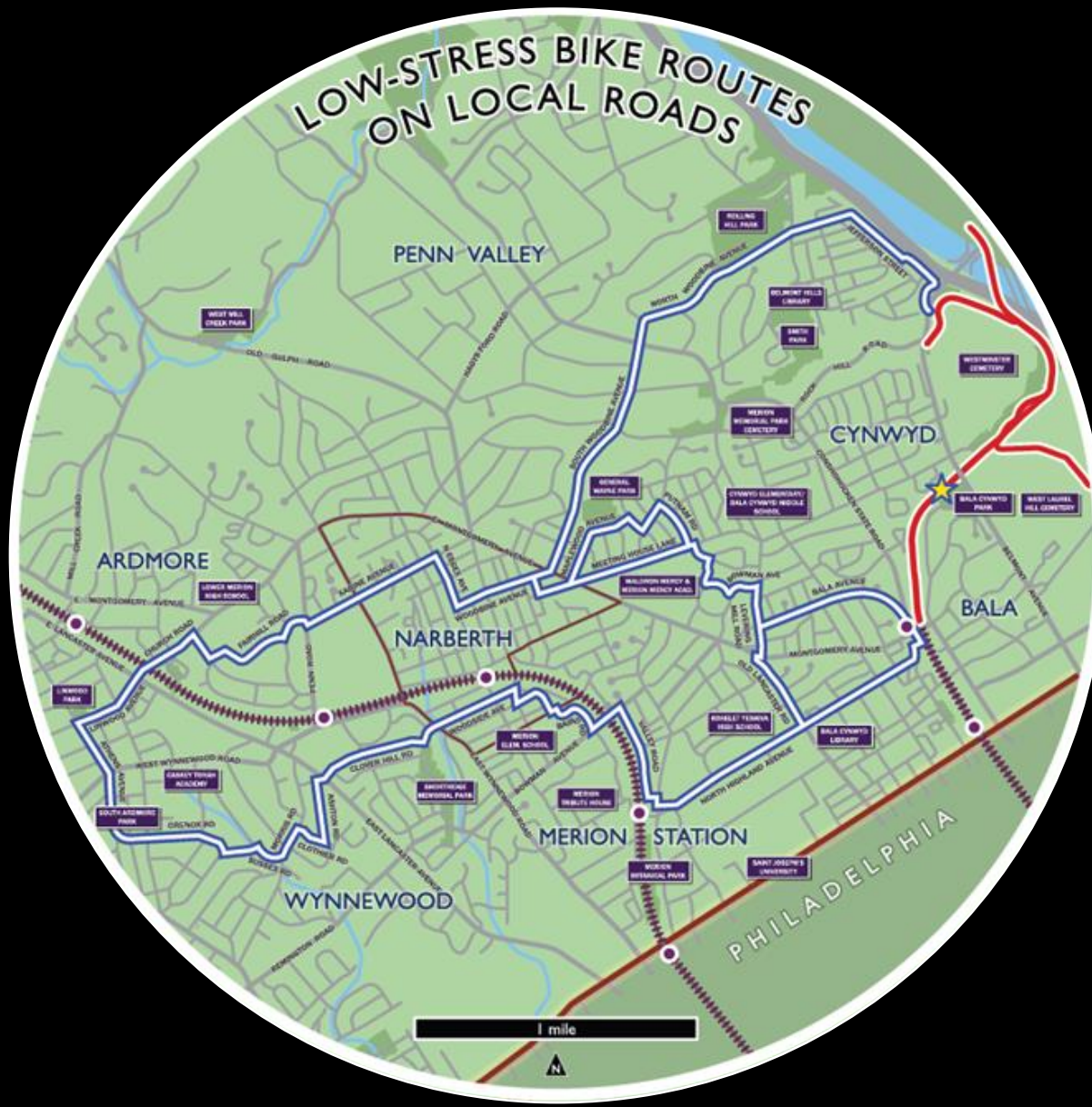
The extension of the CHT over the Schuylkill River via the Manayunk and Pencoyd Bridges is a keystone in completing two regional trail networks: the Circuit and the Schuylkill River Heritage Area. When completed, the Circuit will include 750 miles of paved trails linking Philadelphia, Bucks County, Montgomery County, Delaware County, Chester County and New Jersey. The Schuylkill River Heritage Area (SRHA) extends the 128 mile length of the Schuylkill River from Philadelphia to Pottsville.

The SRHA was designated as a National Heritage Area in 2000 to celebrate the natural, cultural, historic and recreational resources of the Schuylkill River watershed. National Heritage Areas work to revitalize and restore the region through natural and cultural resource preservation, education, recreation, community revitalization, and heritage tourism.

New Regional Trail Network Sign



New Regional Trail Network Map



Beyond the Trail: Highlighting Safe Biking on Surrounding Roads



CYNWYD HERITAGE TRAIL

WELCOME TO THE CYNWYD HERITAGE TRAIL

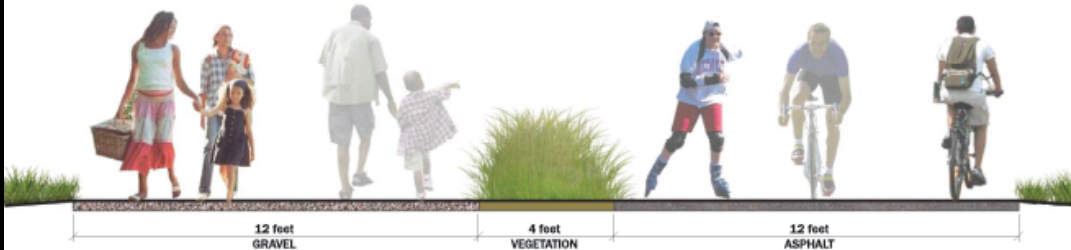
The design for the Cynwyd Heritage Trail (formerly the Schuylkill Valley Division of the Pennsylvania Railroad) was developed during a public design process occurring between October, 2009 and May, 2010. The primary goal of the design process was to minimize potential conflicts between higher speed bike users and lower speed runners, pedestrians and dog walkers, and to also compensate for the short, straight and steep rail alignment. This section of the former Schuylkill Valley Division contained some of the steepest grades in the entire Pennsylvania Railroad system and often required locomotives to push freight trains uphill to Cynwyd Station.

RECOMMENDED TRAIL USE

As far as we know, the Cynwyd Heritage Trail is the first municipal trail system to address multi-use trail conflicts by creating separate trails. Please enjoy yourself and also please be aware that other people may be using the trail differently than you. Please follow the posted etiquette signs and follow these simple guidelines when using the trail:

- Pedestrians, runners, dog walkers, and children on bikes are encouraged to use the soft surface trail.
- Runners, bikers, skateboarders, and pogo stickers are encouraged to use the hard surface trail.
- Have fun, be safe and be friendly.

TWO PATHS



GRAVEL PATH: Intended to serve as a local lane for lower intensity trail users.

ASPHALT PATH: Intended to serve as an express lane for higher intensity trail users.

TRAIL ETIQUETTE

STAY ALERT. Always be aware of your surroundings.

PROTECT YOUR CHILDREN. Keep them to the right and under control.

Always stay to the right.

Do not block the trail:

- When stopping
- By going 3 or 4 abreast

Yield:

- When entering the trail
- At train intersections

Control your dogs; treat your pet as you would your child.

No trespassing onto adjacent private properties.

Pedestrians always have the right-of-way.

Bikes do not leave the trail.

Pass only:

- After looking behind you
- To the left
- After giving a loud warning, "ON YOUR LEFT"

Wear a helmet!

If you see something, say something!

Refer to the closest numbered CHT trail marker and call 911 with your location.

Thank you!



LOWER MERION TOWNSHIP

Department of Parks & Recreation

610-645-6220

www.lowermerion.org

New Trail Rules Sign



