



# Trails in Delaware County

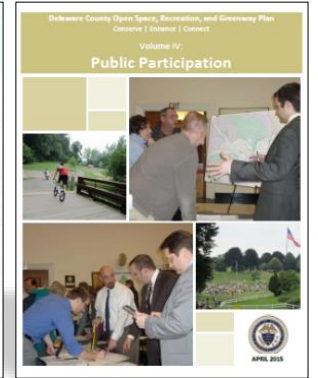
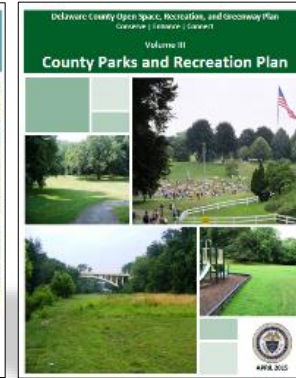
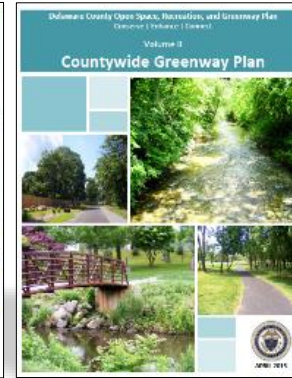
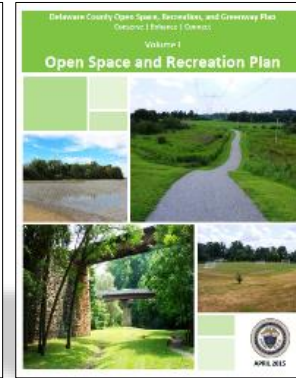
February 10, 2018



# OPEN SPACE, RECREATION, AND GREENWAY PLAN



**April 22, 2015**  
(Happy Earth Day!)



# OPEN SPACE, RECREATION, AND GREENWAY PLAN

## PRIMARY TRAIL NETWORK

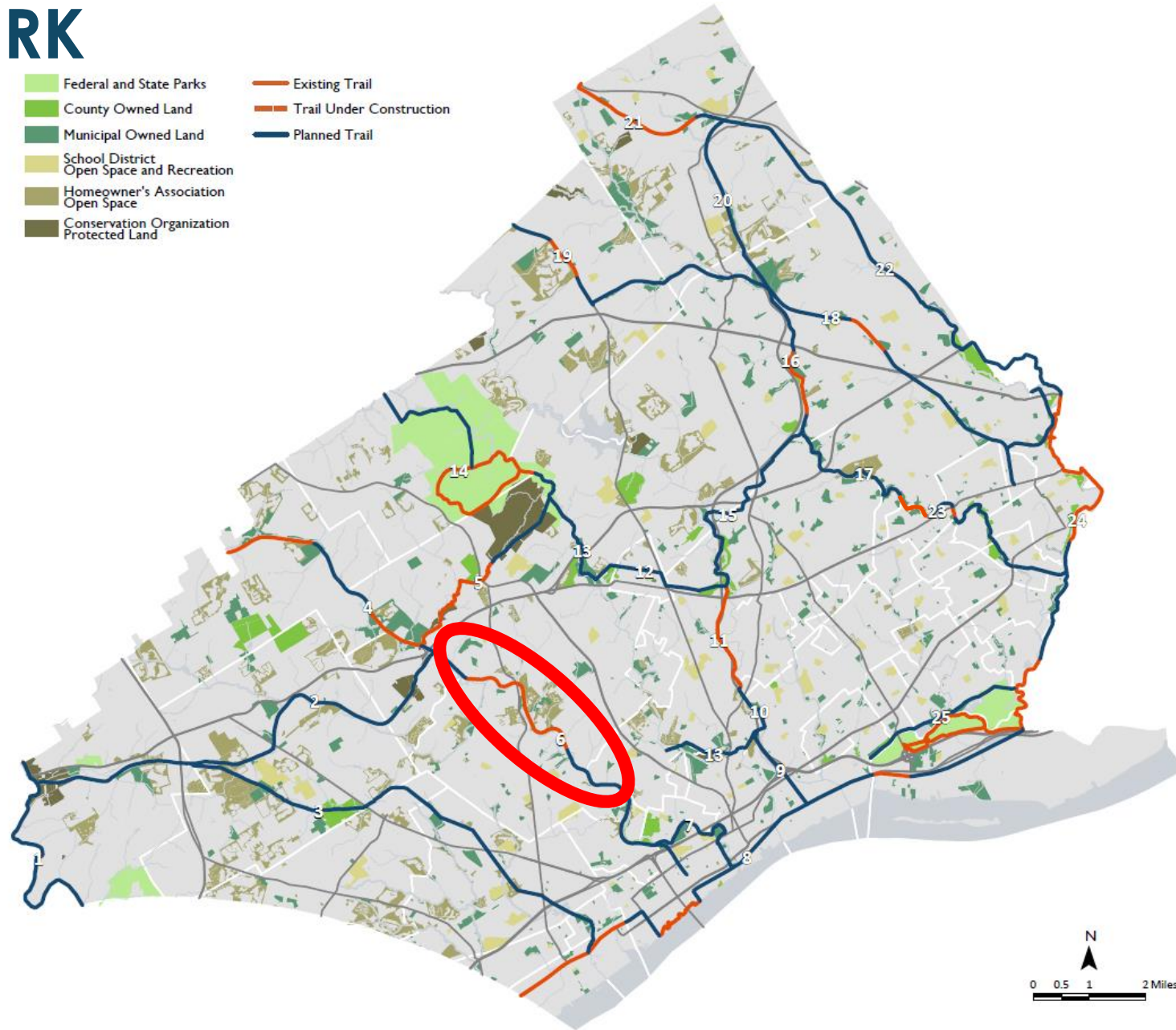


**130 Miles of Trails**

Existing: 36 Miles

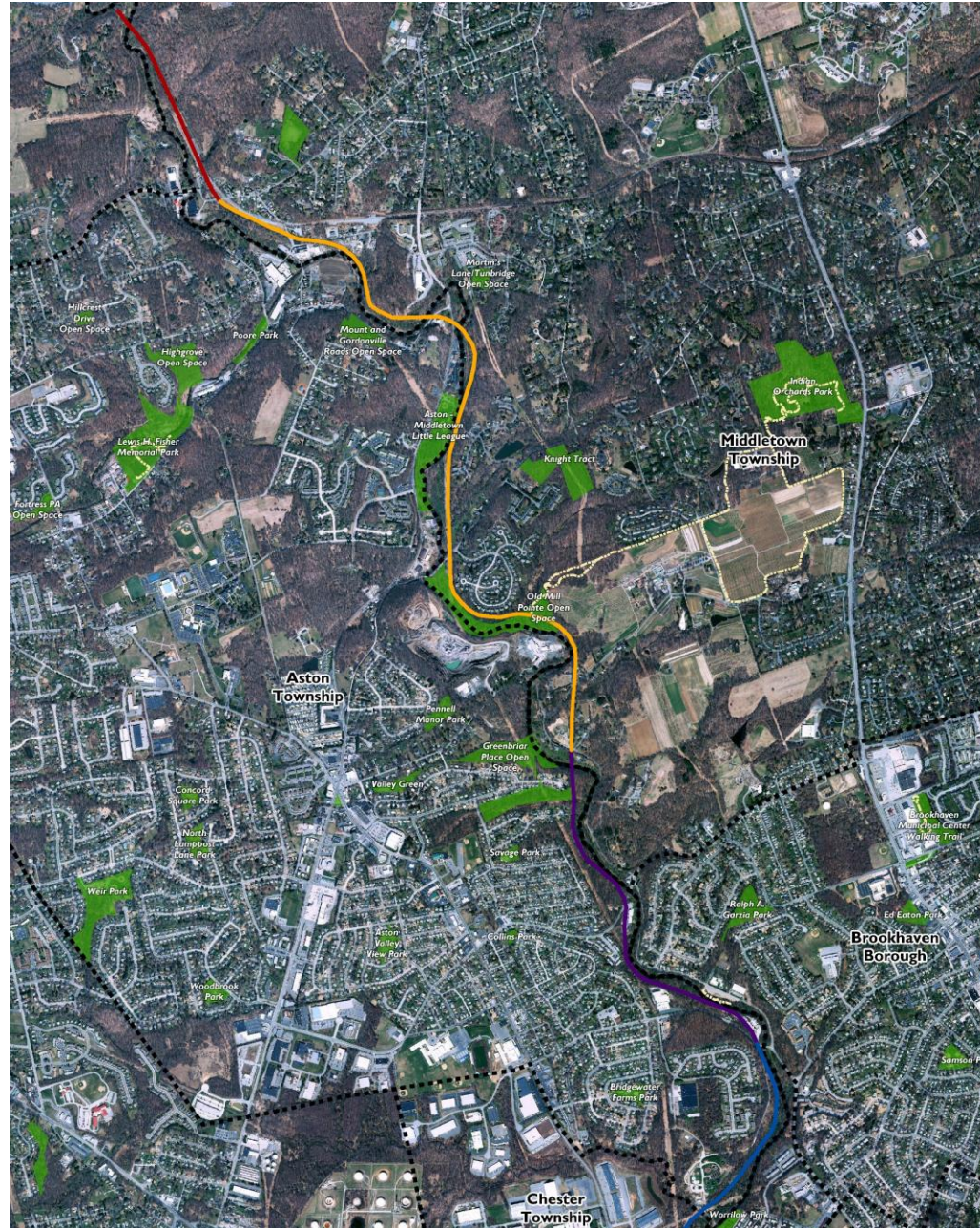
Planned: 94 miles

Plus over 100 mile of existing local trails



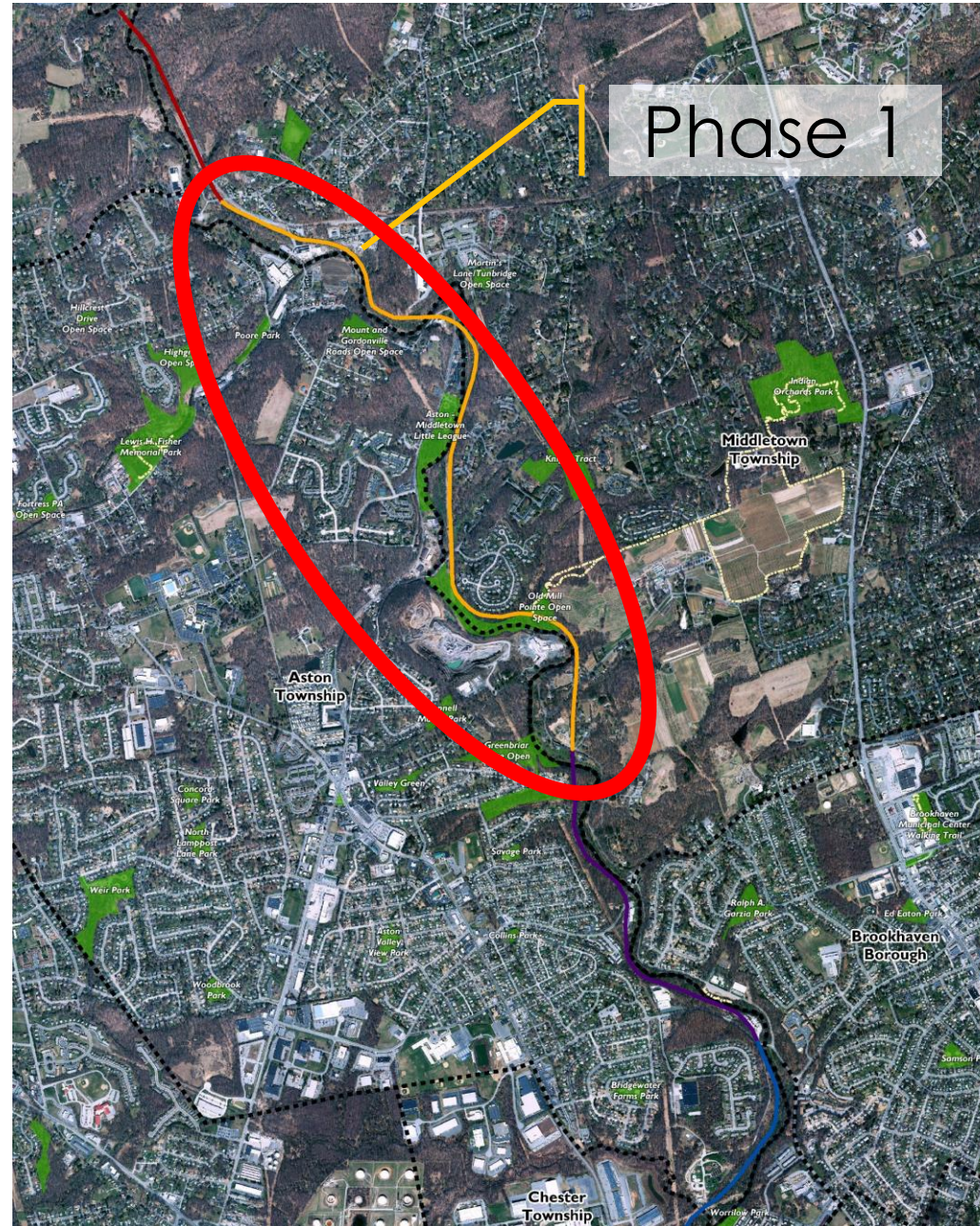


# CHESTER CREEK TRAIL



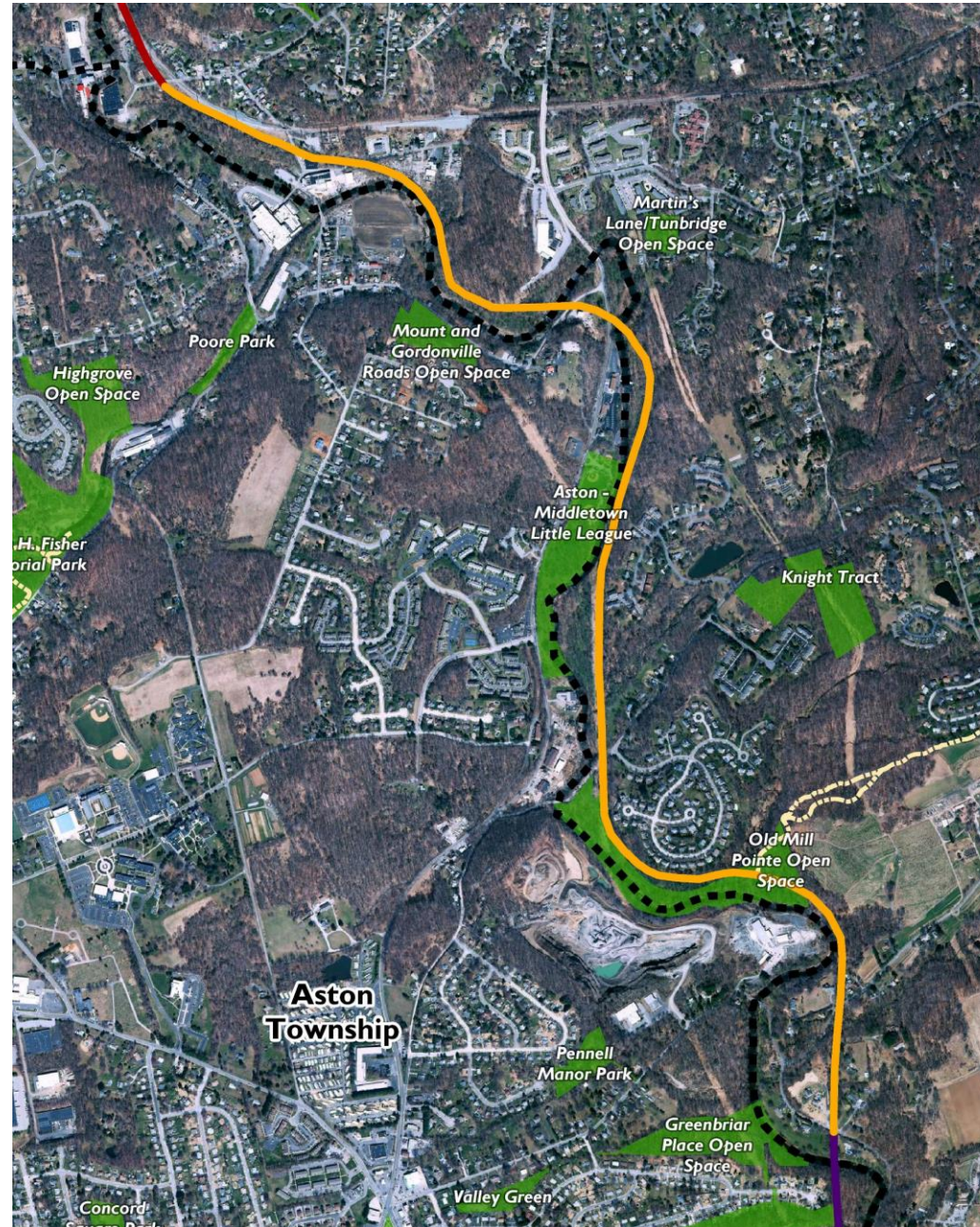


# CHESTER CREEK TRAIL – Phase 1





# CHESTER CREEK TRAIL – Phase 1





# Chester Creek Trail – Phase 1





# Chester Creek Trail – Phase 1





# Chester Creek Trail – Phase 1





# Chester Creek Trail – Phase 1





# Chester Creek Trail – Phase 1



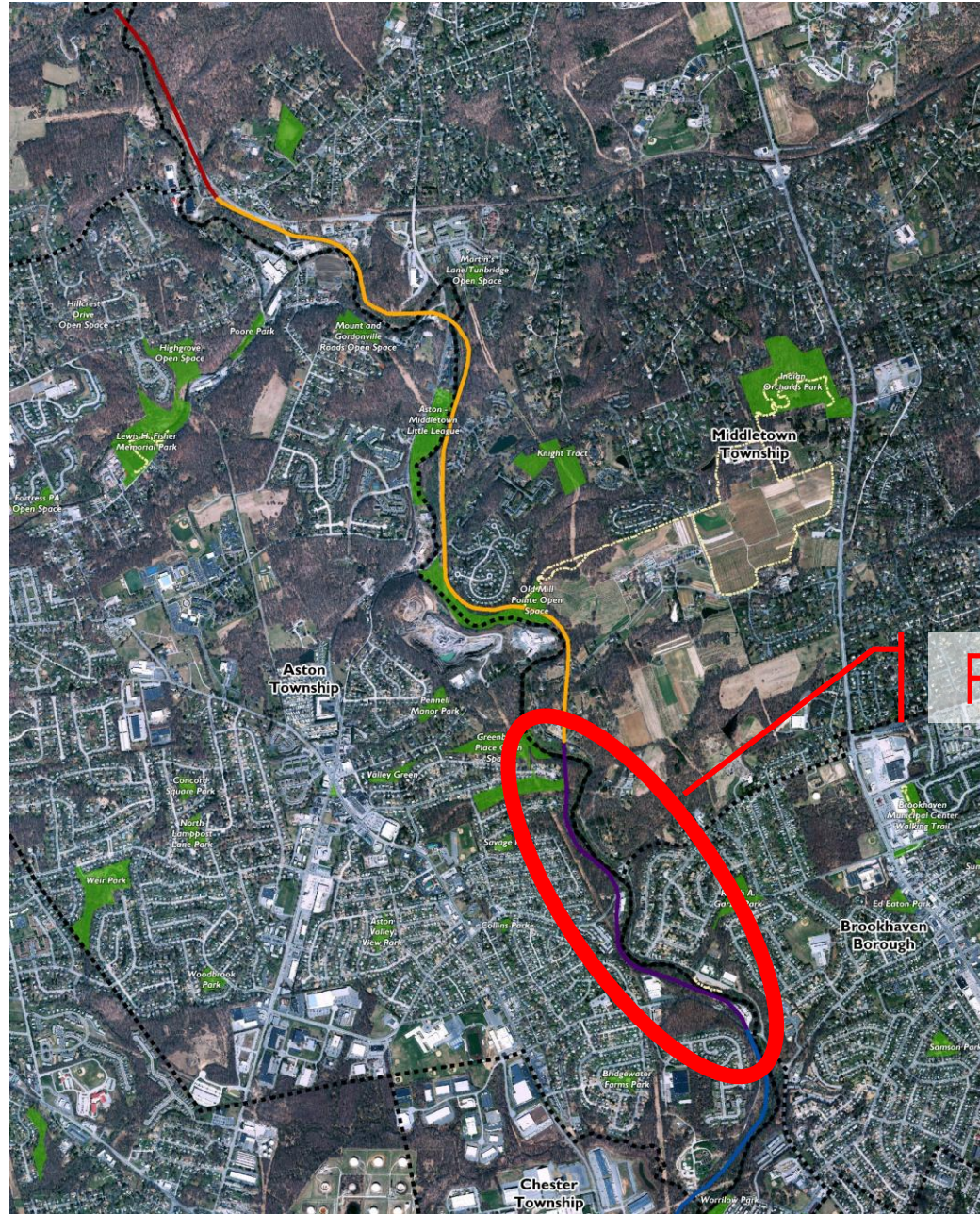


# Chester Creek Trail – Phase 1





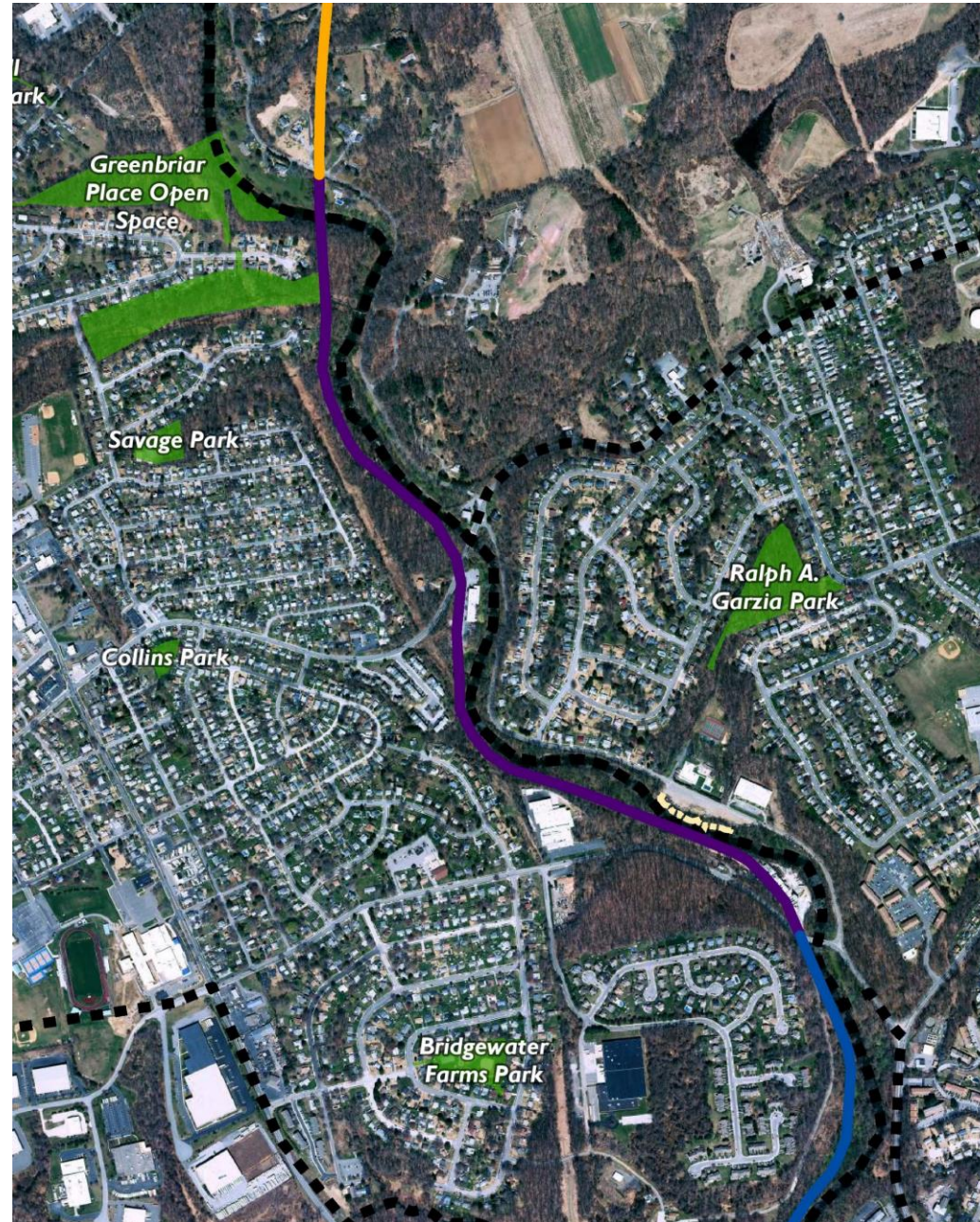
# CHESTER CREEK TRAIL – Phase 2



## Phase 2



# CHESTER CREEK TRAIL – Phase 2





# Chester Creek Trail – Phase 2





# Chester Creek Trail – Phase 2





# Chester Creek Trail – Phase 2





# Chester Creek Trail – Phase 2





# Chester Creek Trail – Phase 2





# OPEN SPACE, RECREATION, AND GREENWAY PLAN

## PRIMARY TRAIL NETWORK

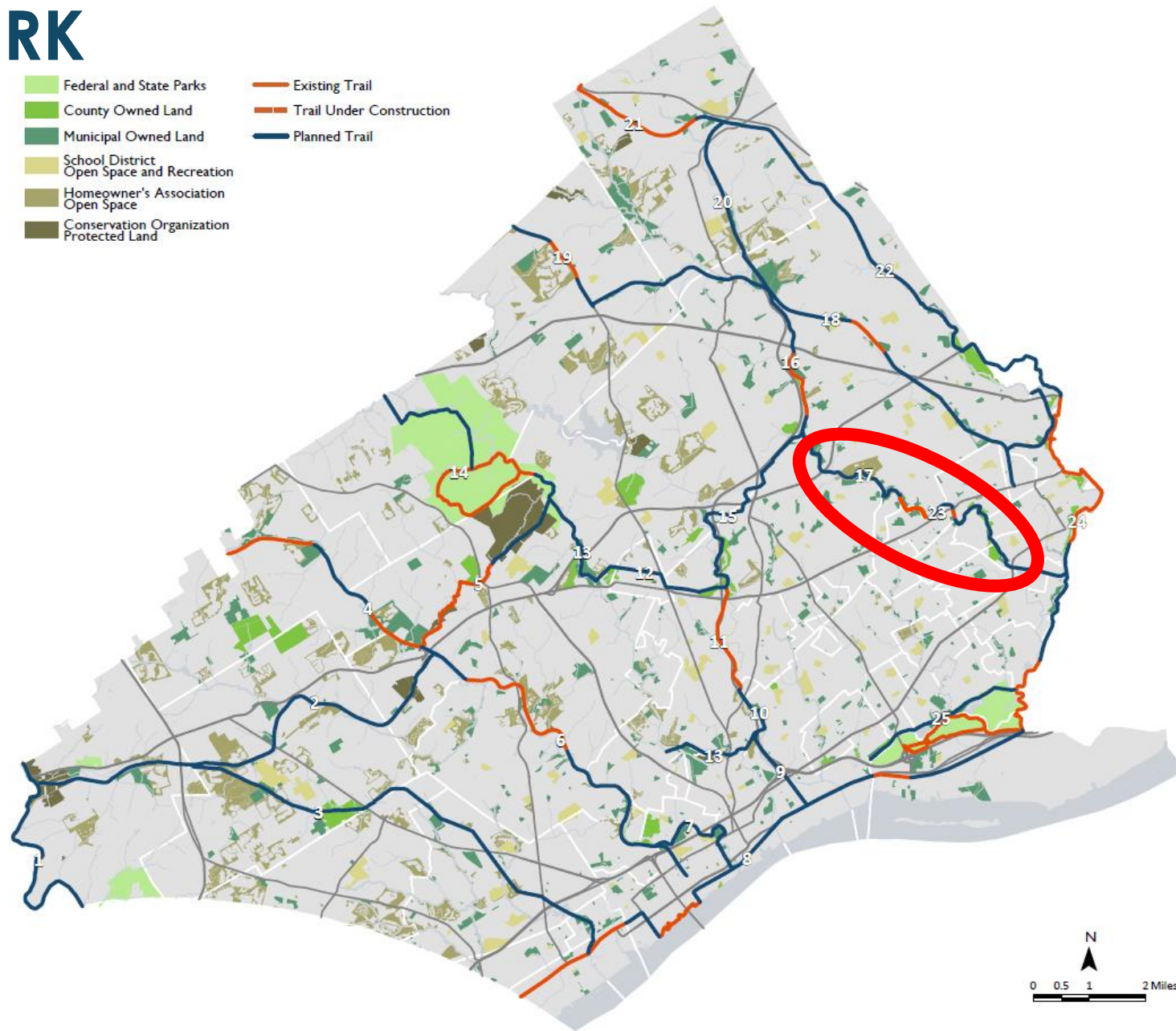


**130 Miles of Trails**

Existing: 36 Miles

Planned: 94 miles

Plus over 100 mile of existing local trails





# DARBY CREEK STREAM VALLEY TRAIL



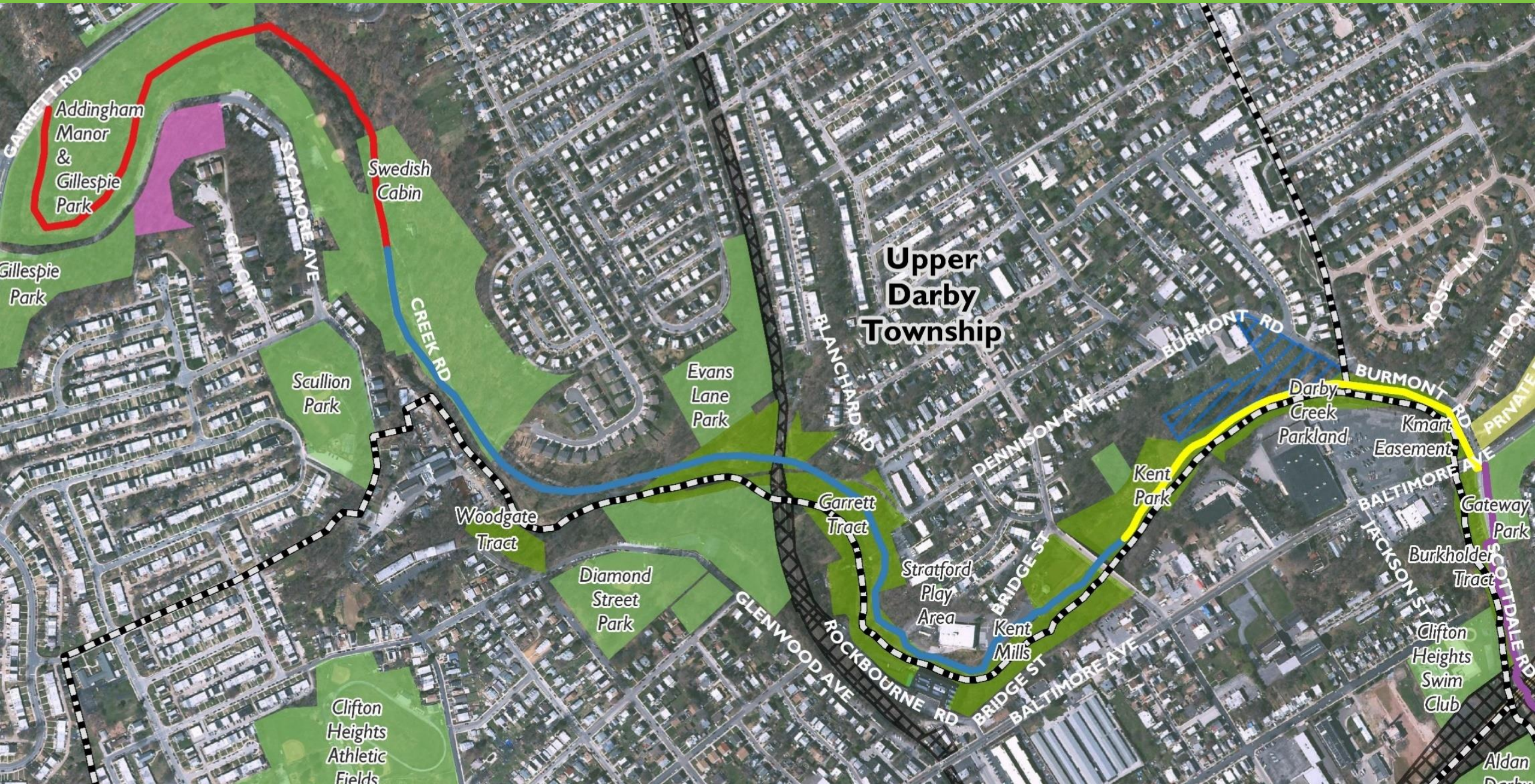


# DARBY CREEK STREAM VALLEY TRAIL





# DARBY CREEK TRAIL – PHASE 1





# Darby Creek Trail – Phase 1





# Darby Creek Trail – Phase 1





# Darby Creek Trail – Phase 1





# Darby Creek Trail – Phase 1





# Darby Creek Trail – Phase 1





# Darby Creek Trail – Phase 1





# Darby Creek Trail – Phase 1





# Darby Creek Trail – Phase 1



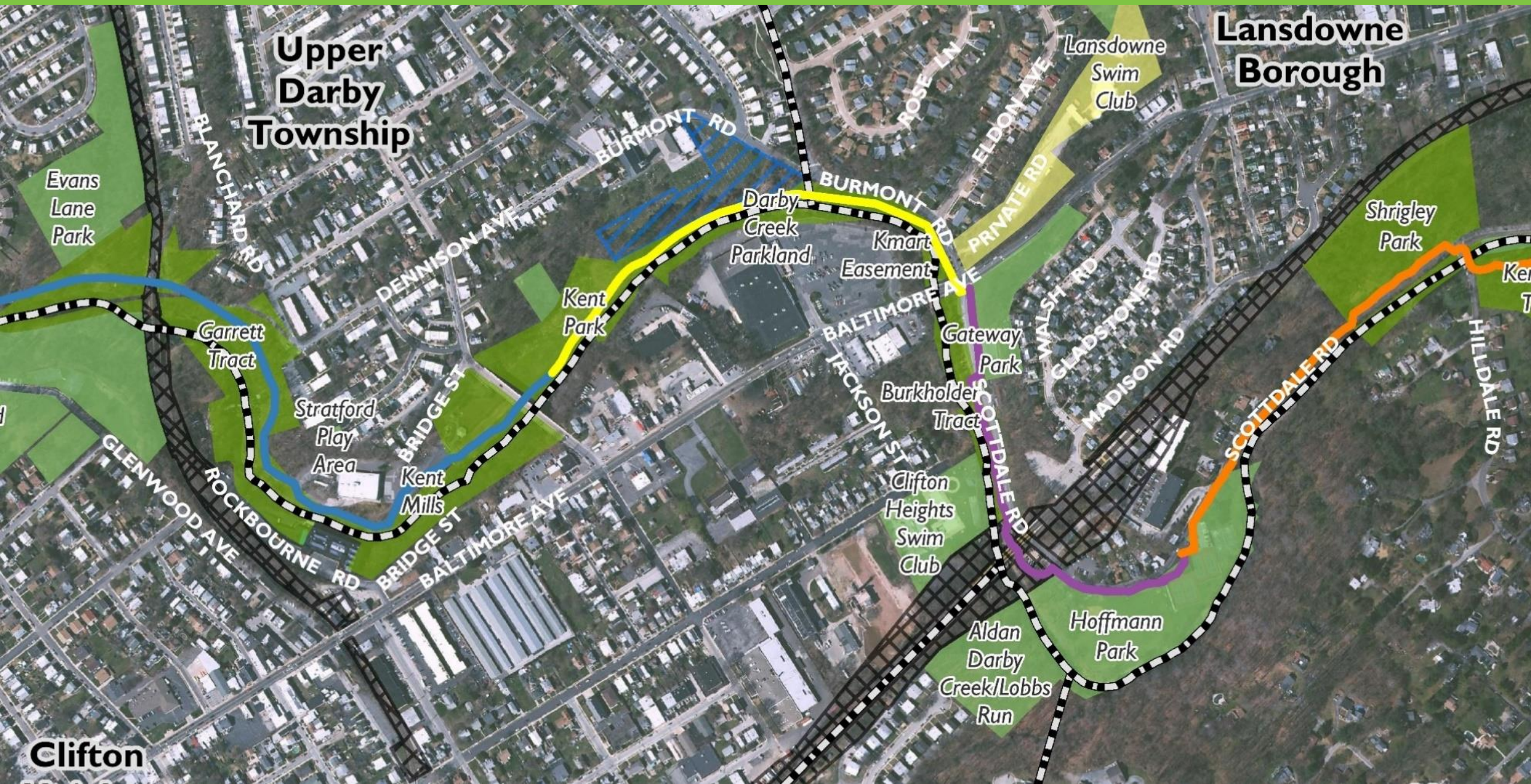


# DARBY CREEK STREAM VALLEY TRAIL





# DARBY CREEK TRAIL – PHASE 2





# Darby Creek Trail – Phase 2





# DARBY CREEK STREAM VALLEY TRAIL





# DARBY CREEK GREENWAY ACQUISITION





# Darby Creek Greenway Acquisition

**Public Meeting**  
Monday  
February 26, 2018  
7:00pm

Darby Borough  
Recreation Center





# OPEN SPACE, RECREATION, AND GREENWAY PLAN

## PRIMARY TRAIL NETWORK



**130 Miles of Trails**

Existing: 36 Miles

Planned: 94 miles

Plus over 100 mile of existing local trails





**Upper Providence Township**

**Media Borough**

**Nether Providence Township**

**Media Station**

**Chesley Office Campus**

**Smedley Park (Main Section)**

**Smedley Park - Penza Tract**

**Media-Smedley Connector Trail**

**Blue Route Bikeway - Leiper-Smedley Trail**

**Ridley Creek Greenway (North & South Sections)**

**Blue Route Bikeway - Smedley to Darby Creek**

**Legend:**

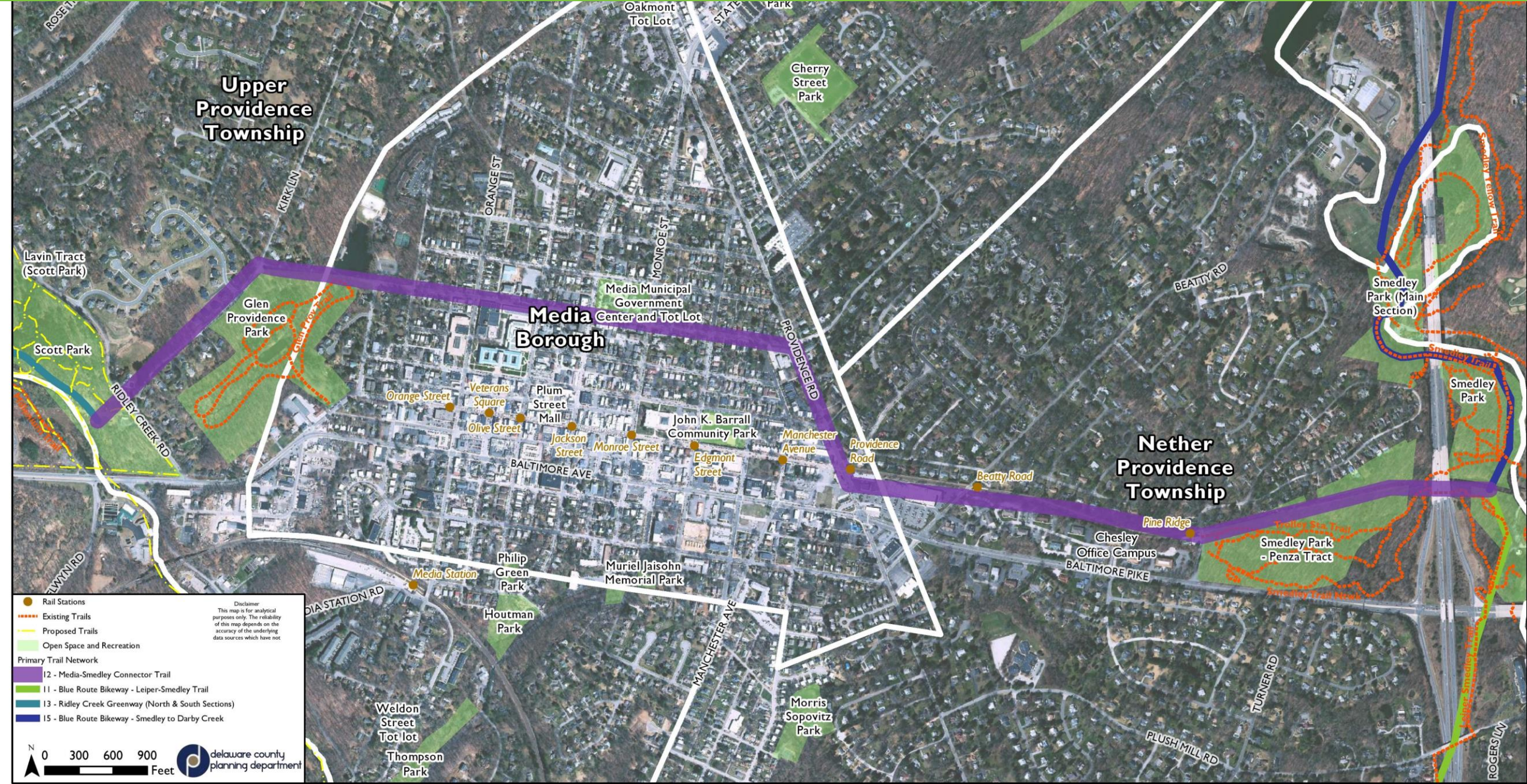
- Rail Stations
- Existing Trails
- Proposed Trails
- Open Space and Recreation

**Primary Trail Network**

- 12 - Media-Smedley Connector Trail
- 11 - Blue Route Bikeway - Leiper-Smedley Trail
- 13 - Ridley Creek Greenway (North & South Sections)
- 15 - Blue Route Bikeway - Smedley to Darby Creek

**Scale:** 0 300 600 900 Feet

**delaware county planning department**





# OPEN SPACE, RECREATION, AND GREENWAY PLAN

## PRIMARY TRAIL NETWORK

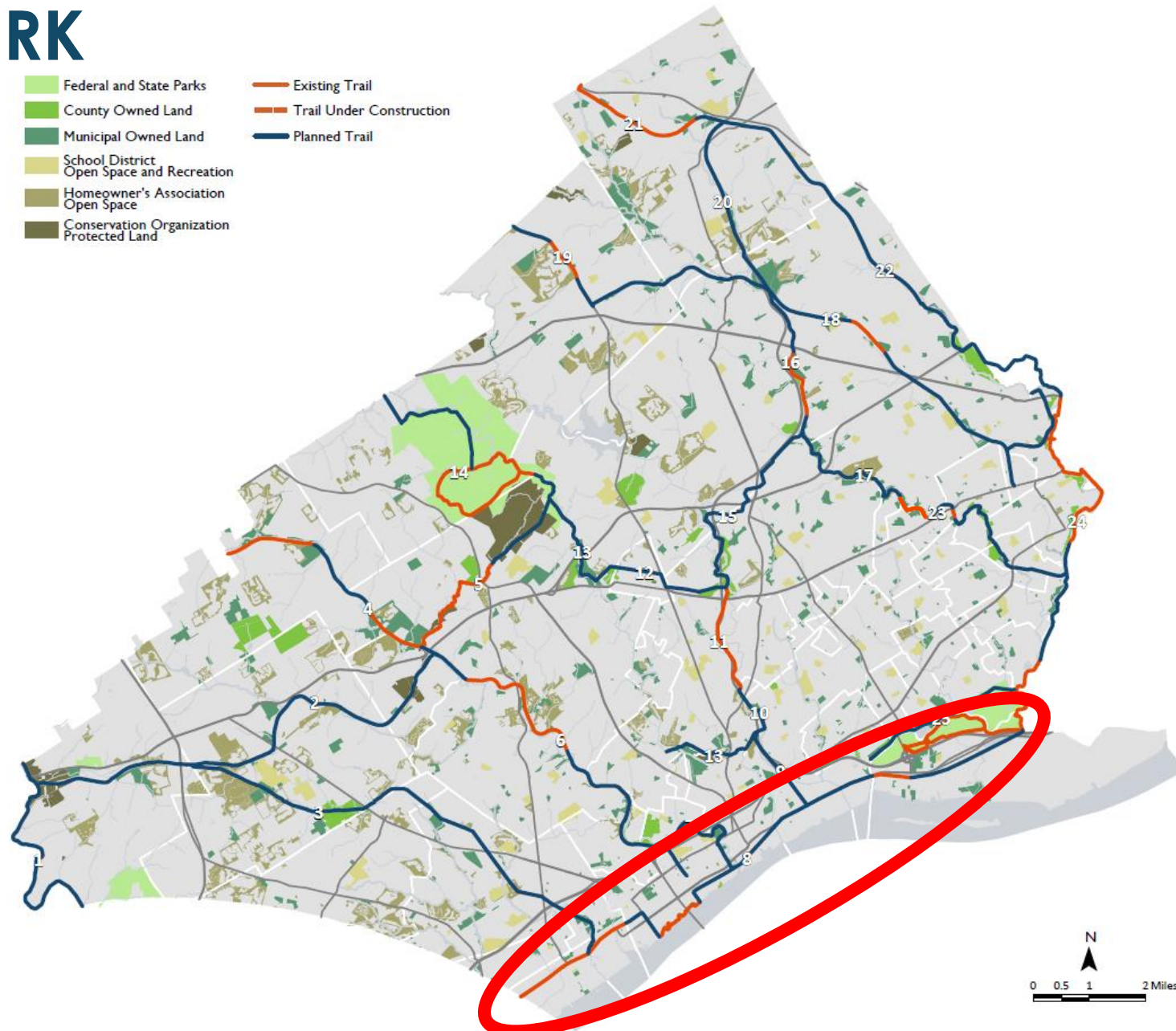


**130 Miles of Trails**

Existing: 36 Miles

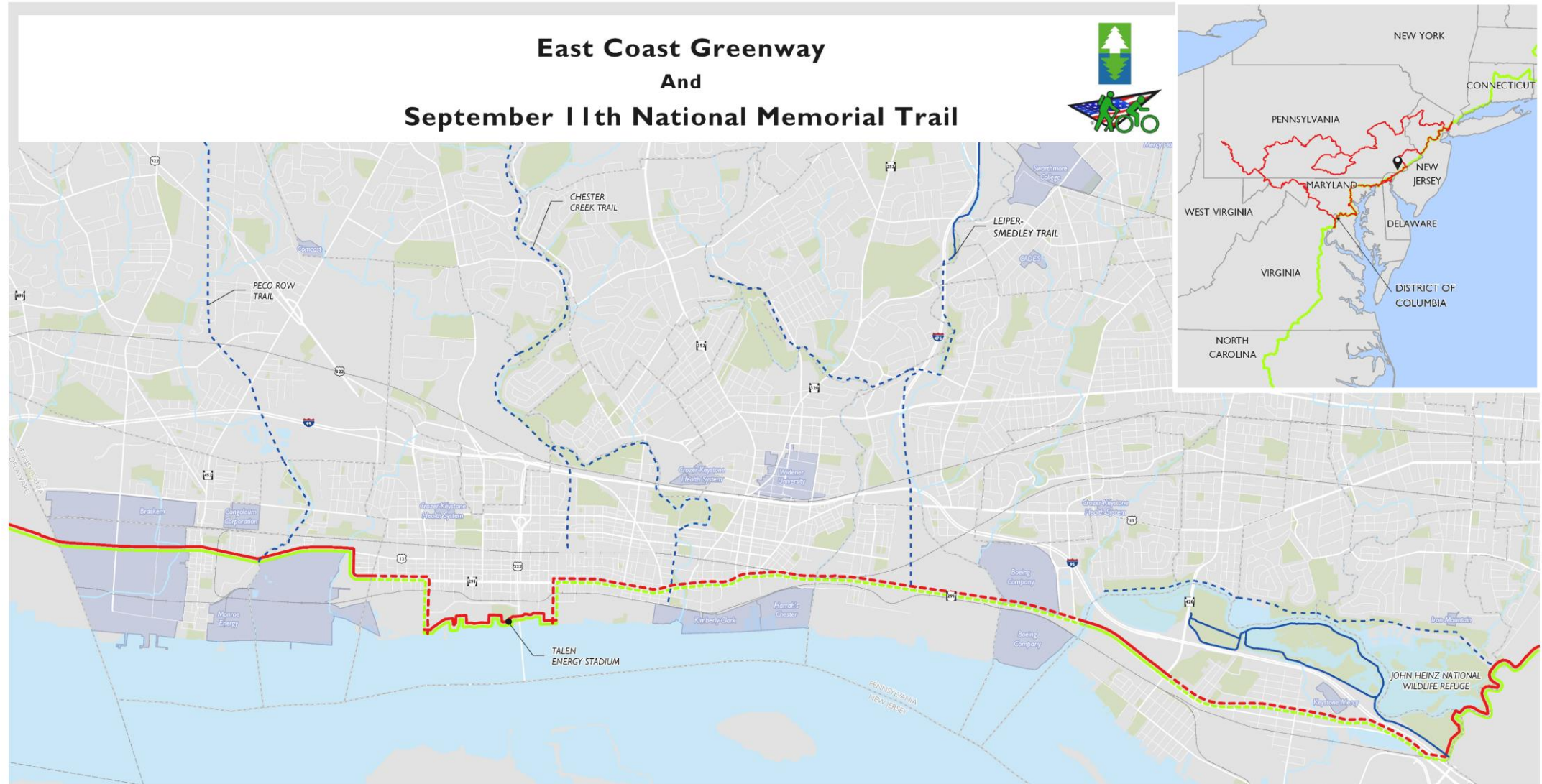
Planned: 94 miles

Plus over 100 mile of existing local trails





# EAST COAST GREENWAY



## East Coast Greenway

- Existing
- Proposed

## September 11th National Memorial Trail

- Existing
- Proposed

## Delaware County Primary Trail Network

- Existing
- Proposed

- Streams
- Rail Lines

- Open Space/Parks
- Major Employers

- Municipal Boundary





# OPEN SPACE, RECREATION, AND GREENWAY PLAN

## PRIMARY TRAIL NETWORK



**130 Miles of Trails**

Existing: 36 Miles

Planned: 94 miles

Plus over 100 mile of existing local trails

