



Through advocacy and education, we lead the movement to make bicycling a safe and fun way to get around for anyone in Greater Philadelphia since 1972

Leonard Bonarek, Regional Planner

Biking



The Suburbs

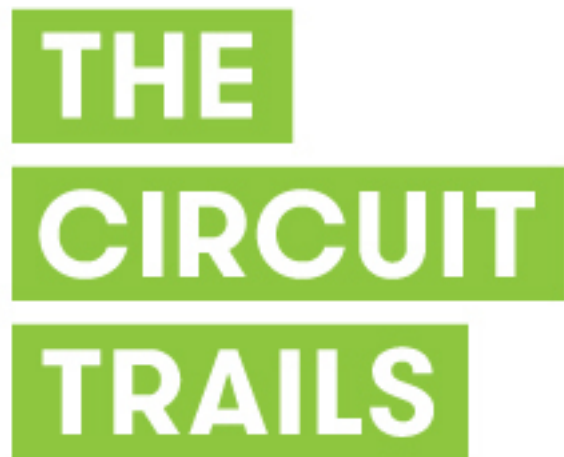
County Affiliate Links

- [Bike Bucks County](#)*
- [Bike Chester County](#)
- [Bike Delaware County](#)*
- [Bike Montgomery County](#)
- ([Biking the Suburbs](#) Facebook Link)

* Looking for a new Affiliate Chair/Committee people

Our Affiliate Groups:

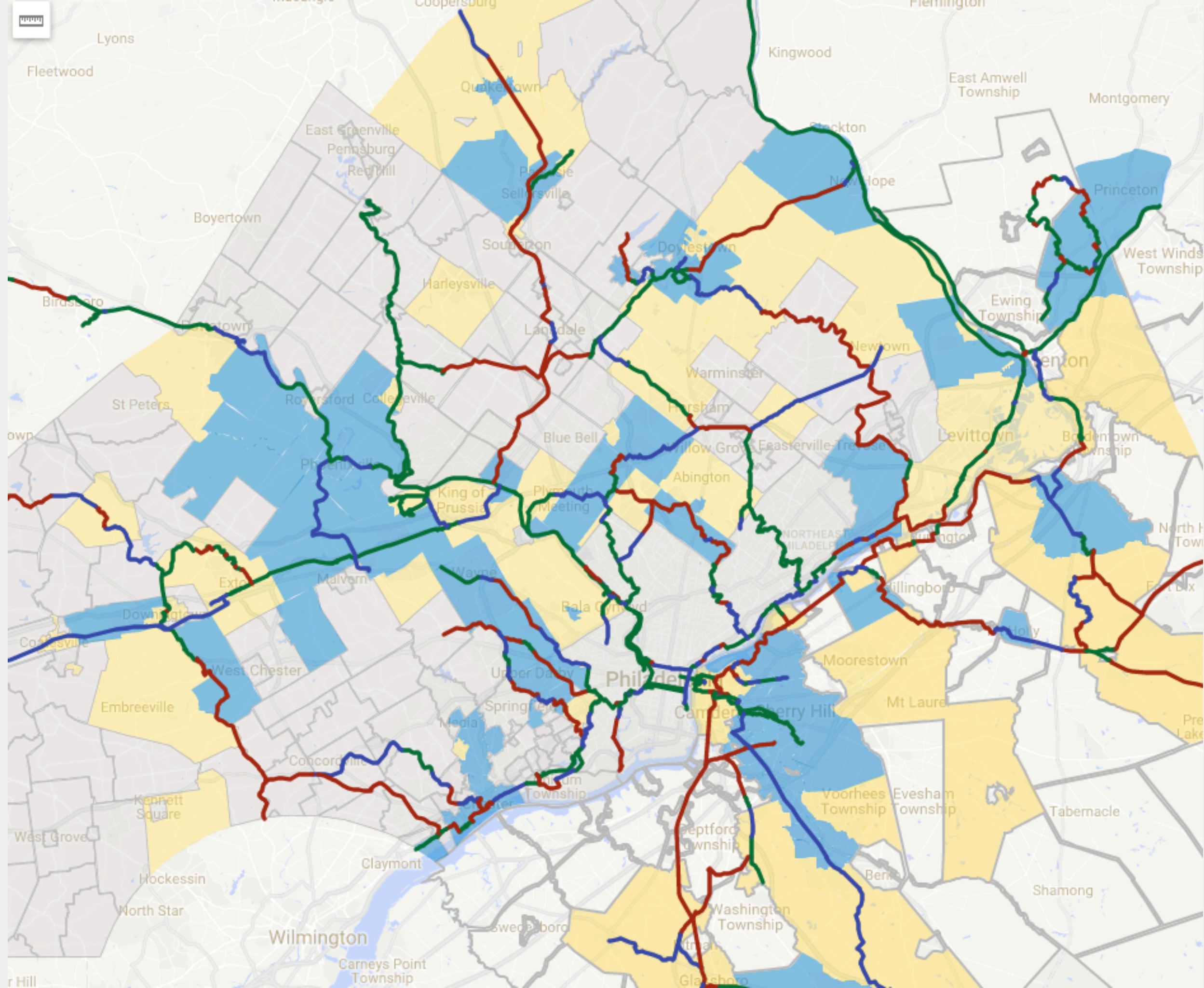
- Promote meetings, news, etc on social media
- Organize tabling at events
- Advocate for bike lanes and Circuit trail segments
- Spearhead municipal resolutions for The Circuit
- Organize bike rides
- Organize brunches and happy hours!!

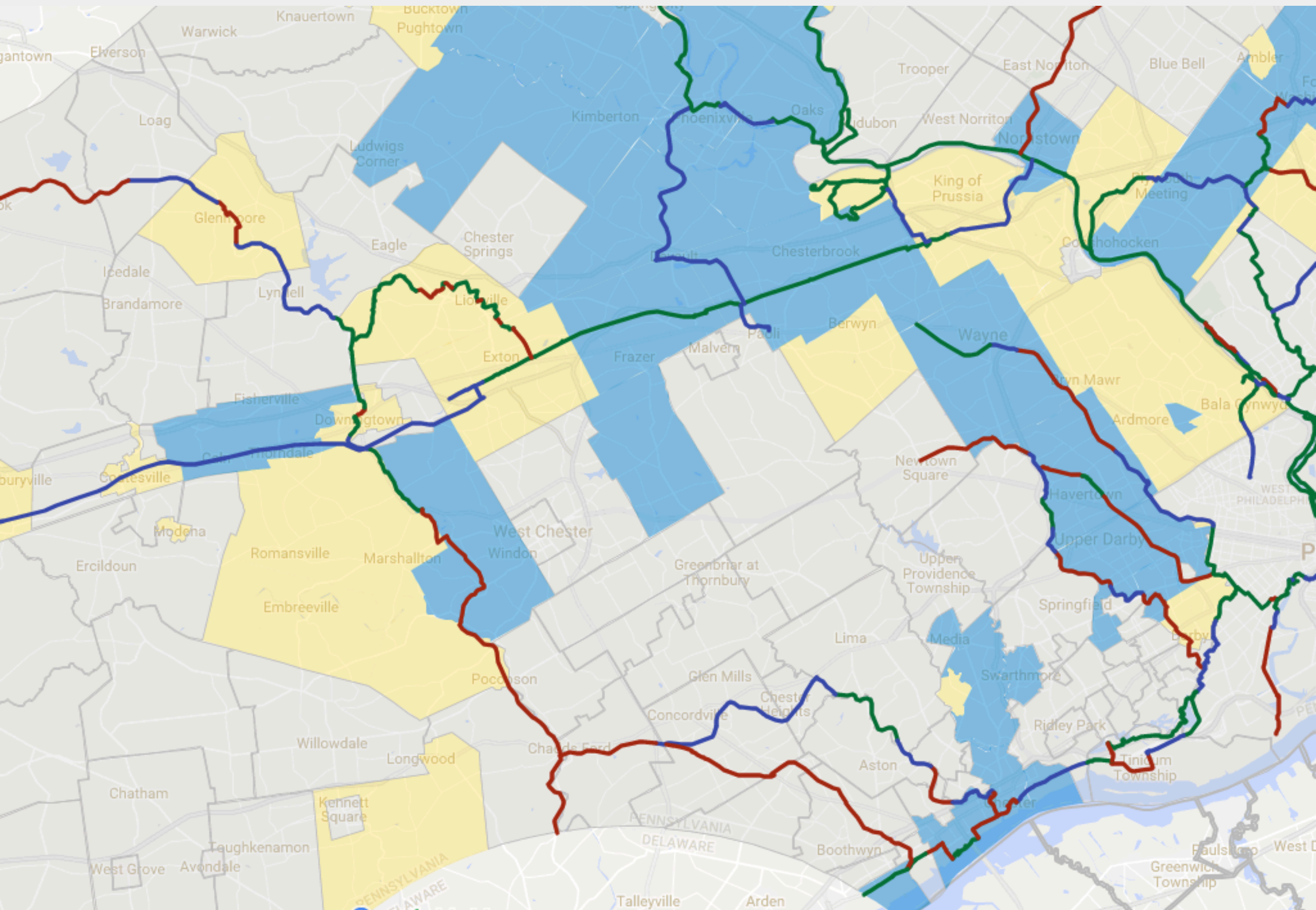


500/2025

Circuit Resolution Campaign:

- 500 miles by 2025 gets on schedule for 2040
 - 327 miles built to date
- Resolution Counts: 67 municipalities, MontCo, Chester & Bucks
- Municipal resolutions build local enthusiasm, allow us to leverage support for county/state/fed funding





https://drive.google.com/open?id=1McnhapS9XuXkb_tZoMhunNQu60&usp=sharing

Bye BOP!



DATE: May 22, 2017

SUBJECT: Replacement of Chapter 16.6 of Publication 13M (DM-2)

TO: District Executives

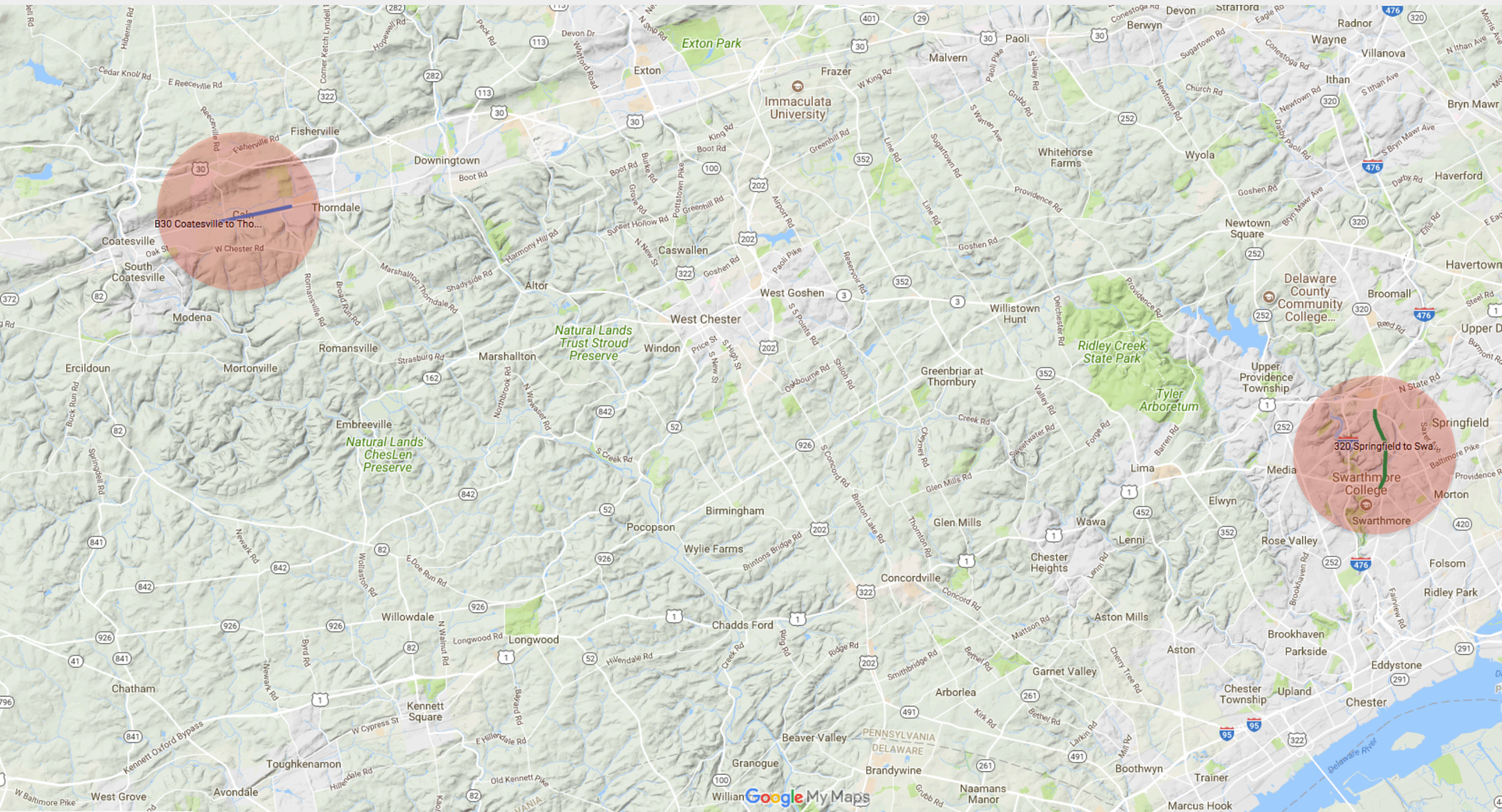
FROM: *Melissa J. Batula, P.E., for*
George W. McAuley, P.E. /s/
Deputy Secretary for Highway Administration

This Strike-Off Letter (SOL) removes and replaces, in its entirety, Chapter 16.6 of Design Manual Part 2 (DM-2). This policy update eliminates the Bikeway Occupancy Permit (BOP) and replaces it with Bike Lane Request/Approval Letters. Attached is the revised Chapter 16.6 of DM-2 that will be incorporated into the next DM-2 update.

<https://drive.google.com/file/d/17pU0YLZLJ55ZCAUXTg6Aj83oxn9aApu2/view?usp=sharing>



PennDOT Installs SUBURBAN Bike Lanes



Rt 30, Caln



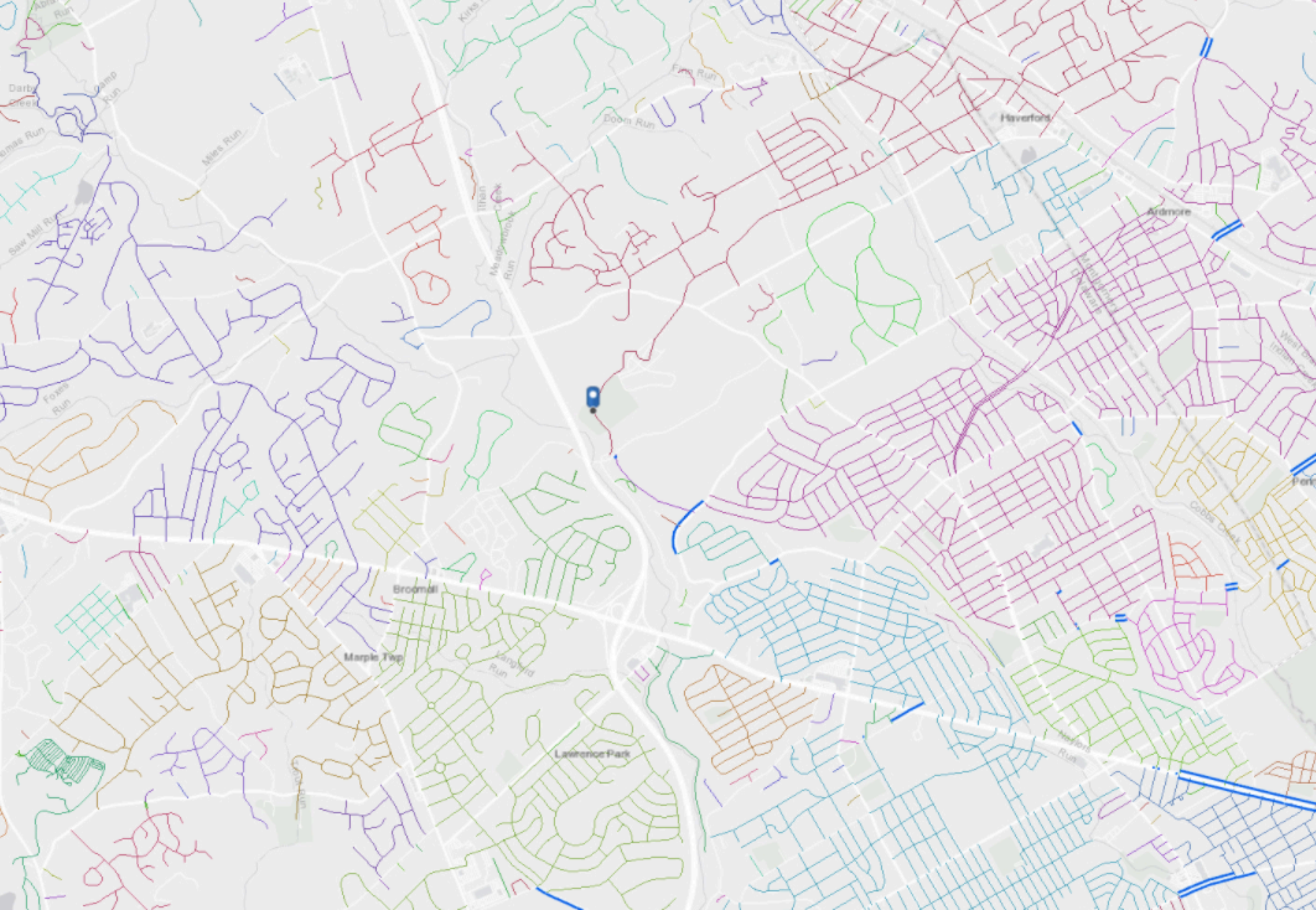
Rt 320, Springfield





TASCC: Technical Assistance for
Suburban Circuit Communities

- Our newest initiative
- The Circuit connects over 100 municipalities
 - But there are more than 350 in our region...
- TASCC: finding “low stress” on-road connections
- Advocating for towns to request bike lanes from PennDOT
- Most projects: signage of existing routes
- Using DVRPC’s “LTS” dataset



<https://www.dvrpc.org/webmaps/BikeStress/>

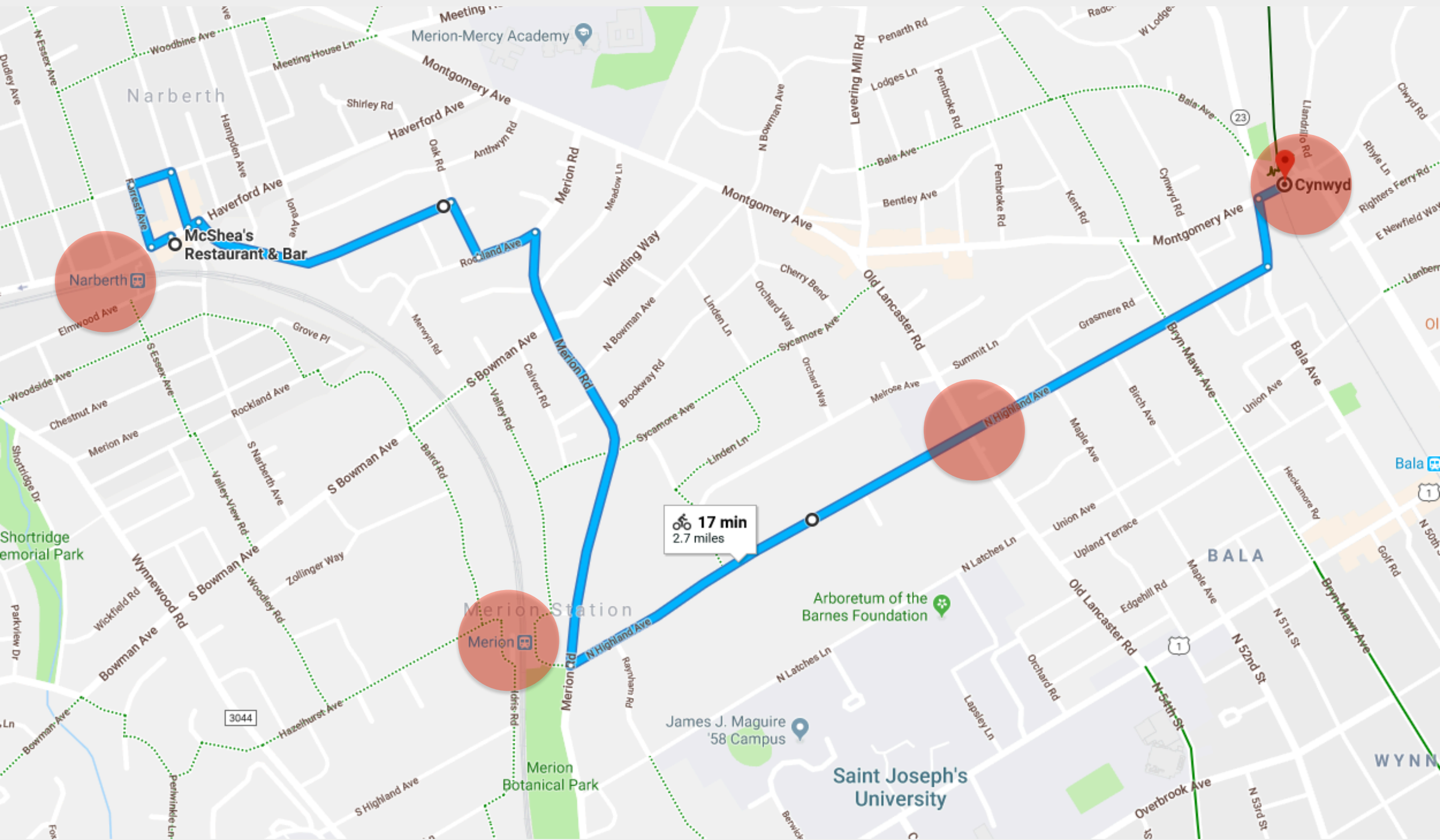


TASCC Narberth:

Our first
pilot



Possible Alignment





Leonard@bicyclecoalition.org

More details on our goals can be found in our [strategic plan](#) on bicyclecoalition.org