

# Regional Trail Summit



**RADNOR TRAIL COUNCIL**

**FEBRUARY 25, 2017**

**LAURA LUKER AND GRETCHEN GROEBEL**

**RADNOR CONSERVANCY**

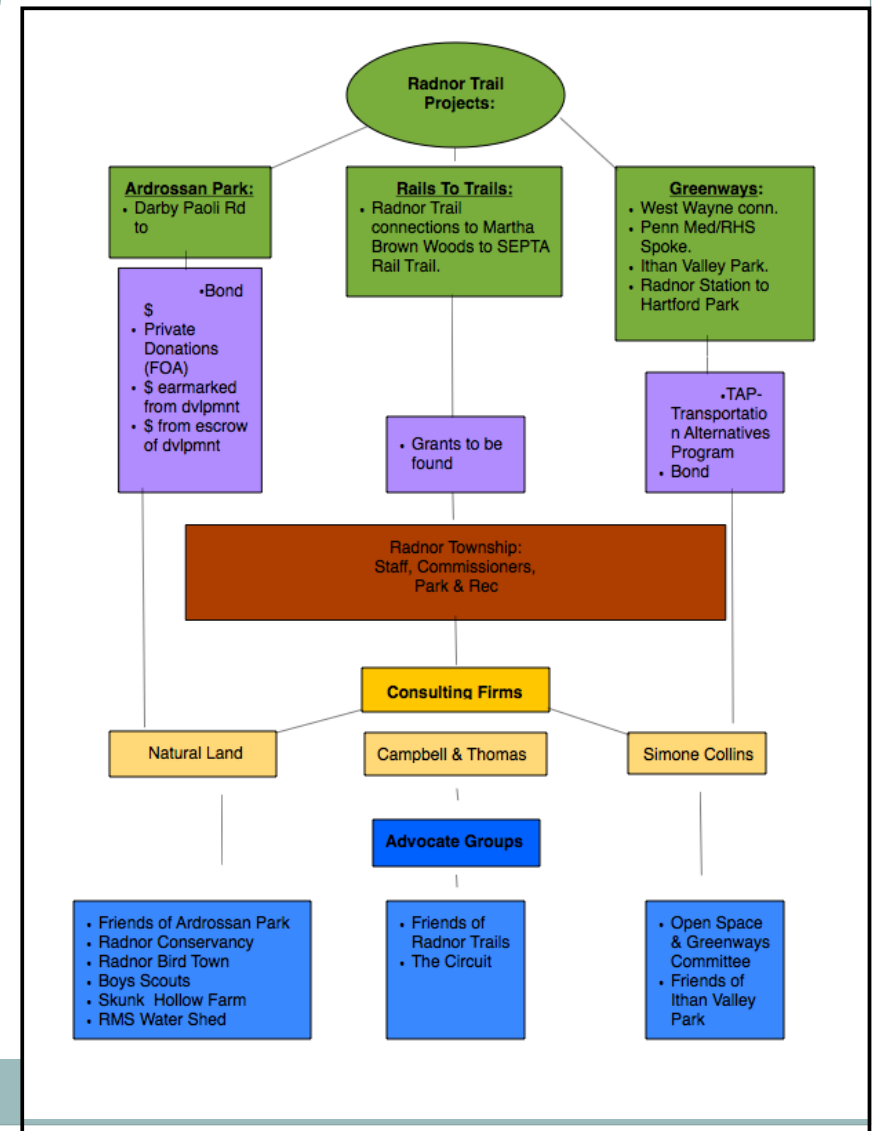
# Radnor Trail Origins

- Radnor Township's trail initiative started with the **Greenways & Open Space Network Plan**. This was developed by a sub committee and project consultants.
- 20 meetings were held from 2013 – 2014.



# Radnor Trail Council

- **Radnor Trail Council** is made up of many Radnor community groups that work together towards the same goal: to promote and see the completion of trails in Radnor Township.
- **Radnor Conservancy** is leading the coordination of this process.



# Radnor Trail Council – Study Groups

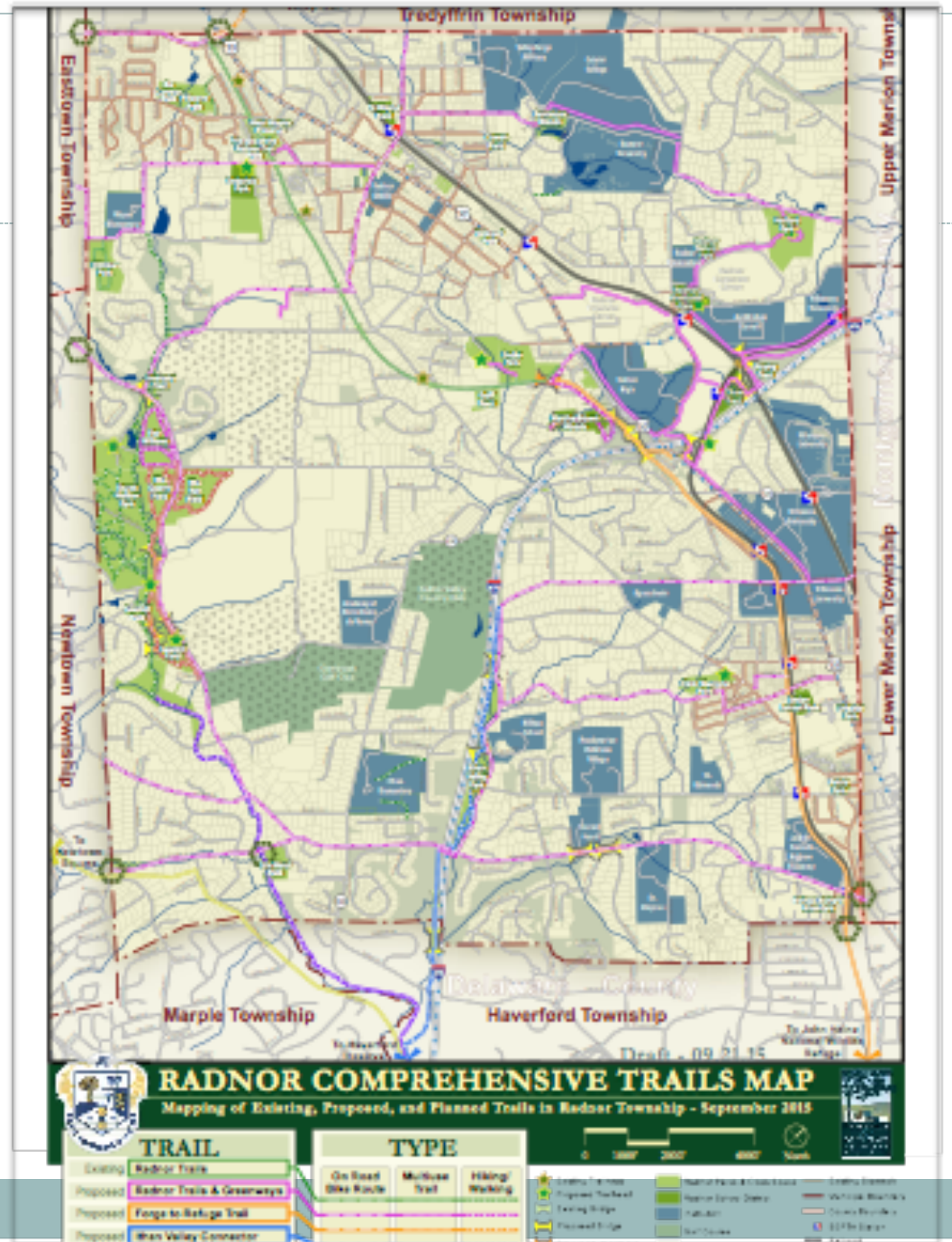


- Each Trail Project has a Study Group.
- These groups are comprised of the trail project's Consultant Company, Township Staff, a few Board of Commissioners, Parks & Rec Board Members and interested non-profit advocate groups.
- These groups set their own schedule to coordinate meetings.



# Comprehensive Trails Map

- From the *Greenways & Open Space Network Plan* came a **Comprehensive Trails Map** (presented in 2015)
- 4 major trail projects were identified and prioritized.



# 4 Trail Projects



## **1. Radnor Station to Harford Park**

## **2. TAP Trails (3 Segments)**

- West Wayne Ave to the Radnor Trail
- Penn Medicine / Radnor High School Spoke
- Villanova Univ. to Ithan Valley Park to Haverford Reserve.

## **3. Radnor Extension Trail**

## **4. Ardrossan Park Trails**

# Radnor Station to Harford Park



- Connects Regional Rail passengers to Radnor Corporate Center, Main Line School Night and Harford Dog Park.
- **Consultant:** Howell Asso
- **Status:** Working with Brandywine Realty Trust to obtain easement for trail
- Approx. completion Winter 2017
- Cost approx 250K (125K Township Bond)





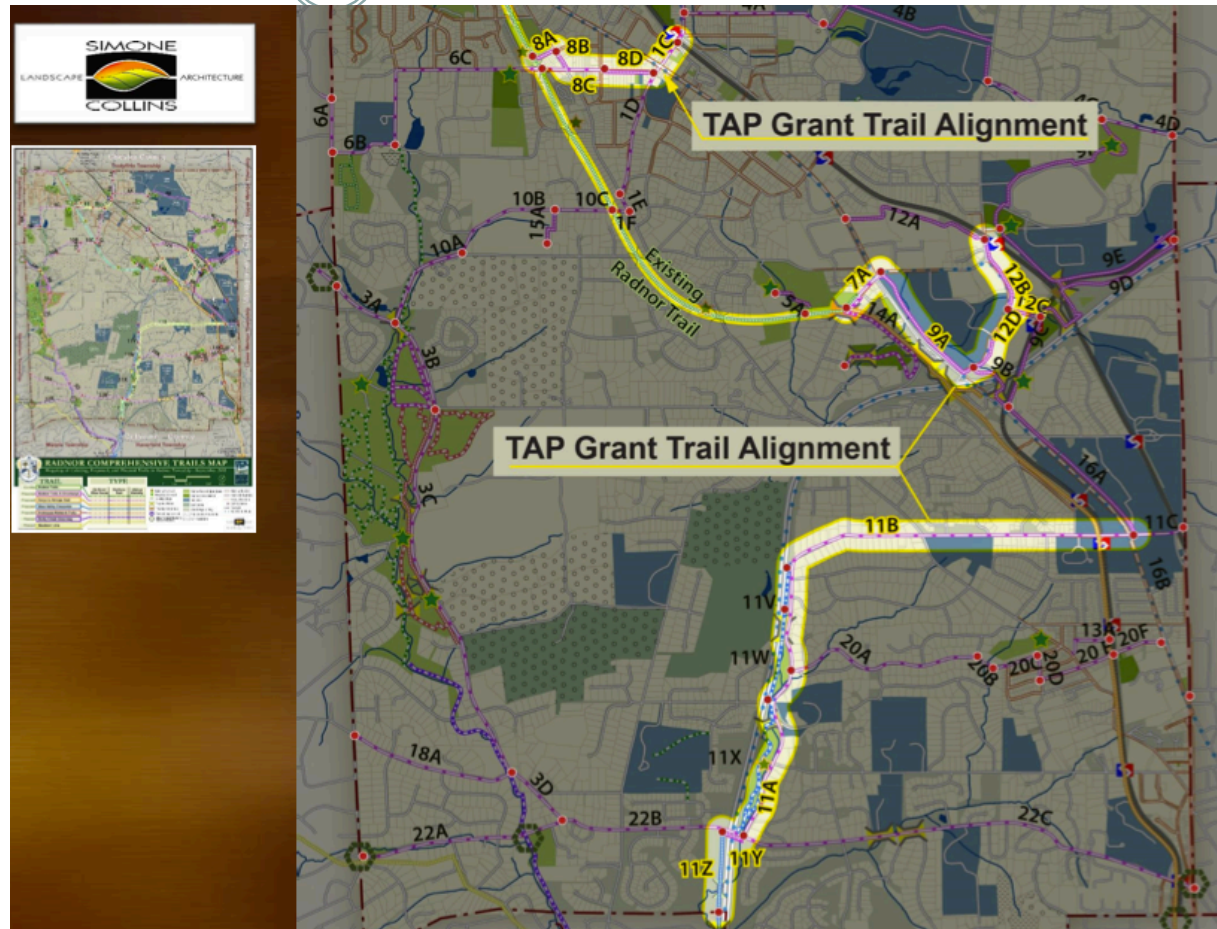
# TAP Trails

- 3 Segments

- West Wayne Ave to Radnor Trail

- Penn Medicine / Radnor High School Spoke

- Villanova Univ. to Ithan Valley Park to Haverford Reserve.



## TAP Grant Trail Alignments (3)

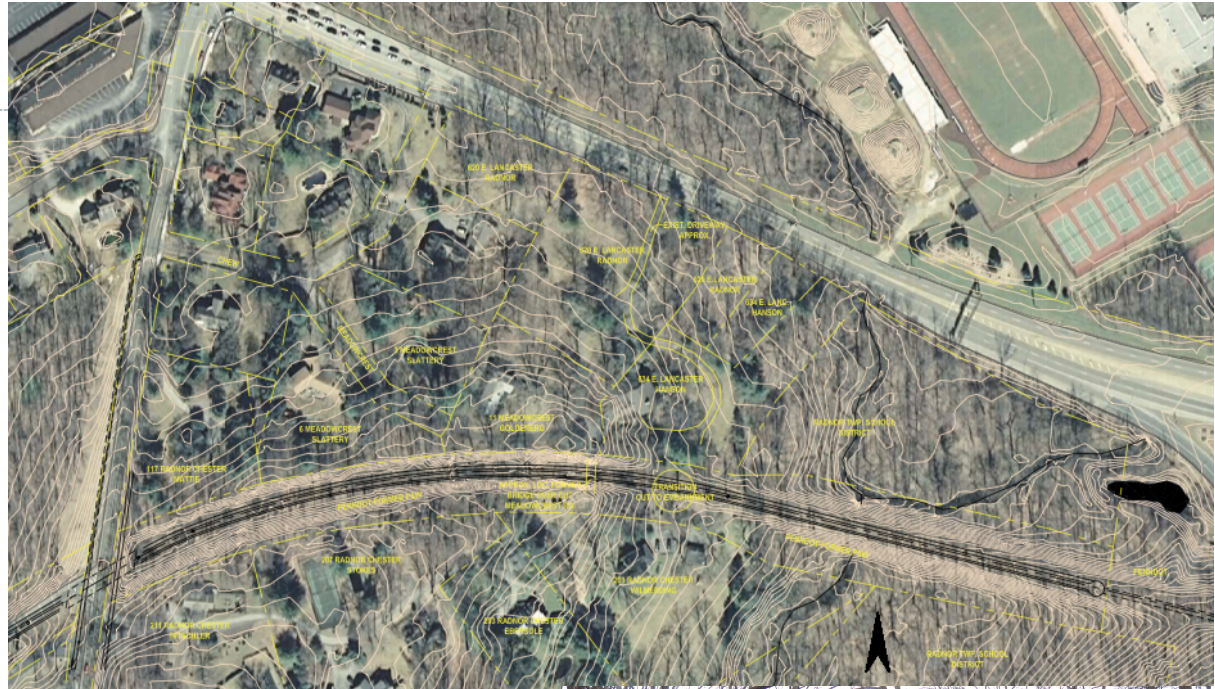


- **West Wayne Connector** will connect downtown Wayne to the Radnor Trail.
- **Penn Medicine / Radnor High School Spoke** corner of RT 30 & Radnor Chester Rd (paralleling High School & KOP Rd. Up KOP Rd. to Radnor Train Station)
- **The Villanova Univ. Spur Trail on Rt.30** along the length of Villanova's campus will connect to Ithan Ave then to Ithan Valley Park extending to Haverford Township. These spurs and connections are part the greater Greenways Open Space Plan.
- **Consultant:** Simone Collins Landscape Architects
- **Status:** Engineering August 2018. Approx. construction 2020
- **Funding:** 1.725M Grants awarded 2017 (TAP, DCNR, DCED)



# Radnor Trail Extension

- Trail will go under Radnor Chester Rd and extend a mile further to the Blue Route. This extension is proposed in the future to link with the SEPTA 100 trail which is part of The Circuit Trails.
- **Consultant:** Campbell Thomas & Co
- **Status:** Survey complete, considering parking options and construction access, anticipated construction fall 2018
- **Funding:** \$500K from bond, seeking 1/2 from grants. Total approx cost 1.3M





# Ardrossan Trails

- **The Ardrossan Park Trails** will connect Willows Park through Skunk Hollow and continue along Darby Paoli Rd. In the future, connect to Bryn Mawr Ave.
- **Consultant:** Natural Lands Trust (NLT) Rick Tralies.
- **Status:** Final Design to be presented 2/27 BoC meeting. Once approved, engineering and grant applications will occur.
- Approx. completion spring 2019
- \$355K from bond, balance grant funded and private donations. Approx cost \$1.1M

