



# 2017 Western Suburbs Trail Summit





# Haverford 2016 Progress Report

Tim Denny – Asst Township  
Manager/Dir. of Recreation

Peter S. Puglionesi -  
Friends of Haverford Trails

Rich Kerr – Friends of  
Haverford Trails

Grace Cooke –  
Willowstreams





# Darby Creek Trail

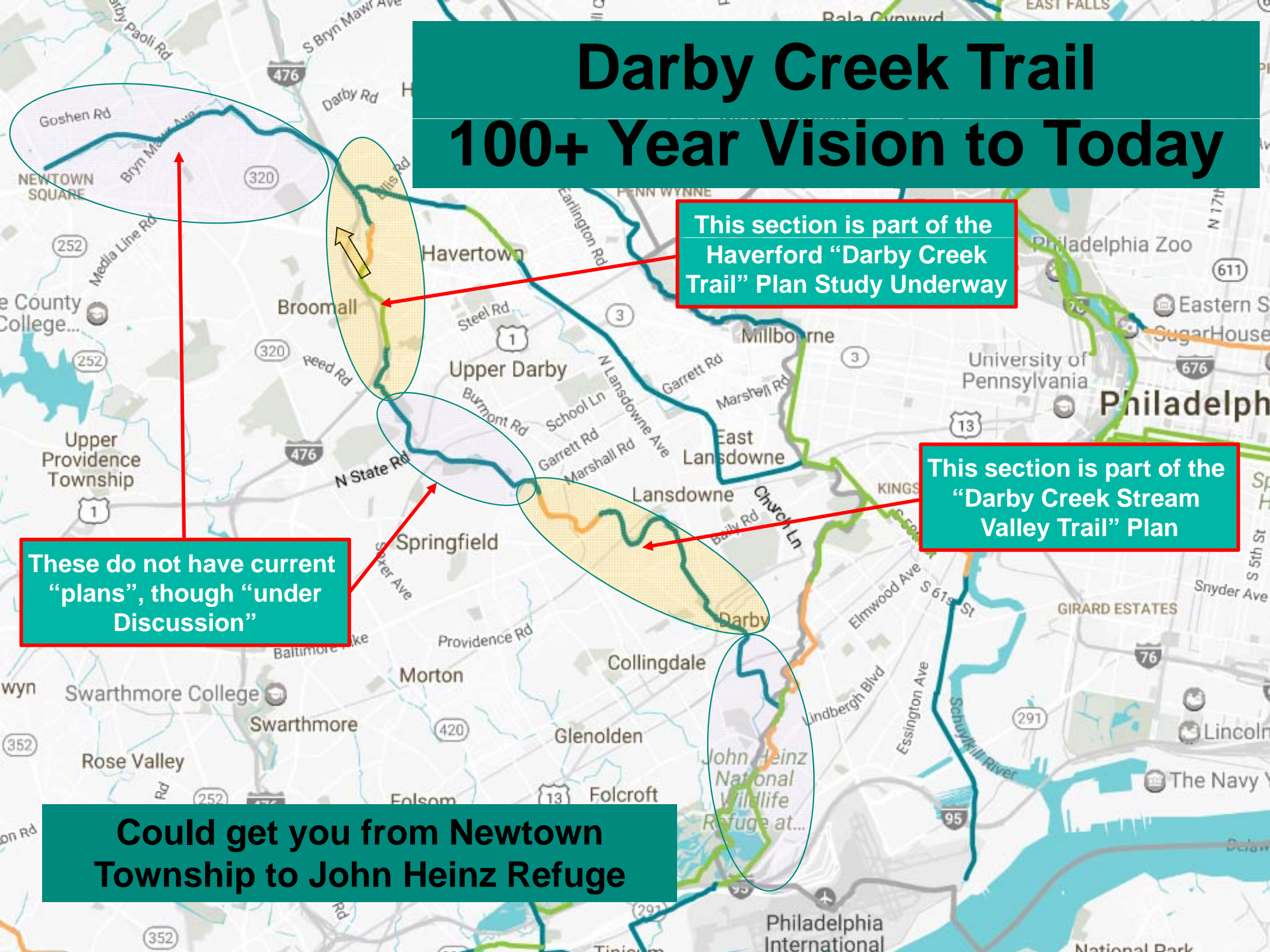
## 100+ Year Vision to Today

This section is part of the Haverford "Darby Creek Trail" Plan Study Underway

This section is part of the "Darby Creek Stream Valley Trail" Plan

These do not have current "plans", though "under Discussion"

Could get you from Newtown Township to John Heinz Refuge

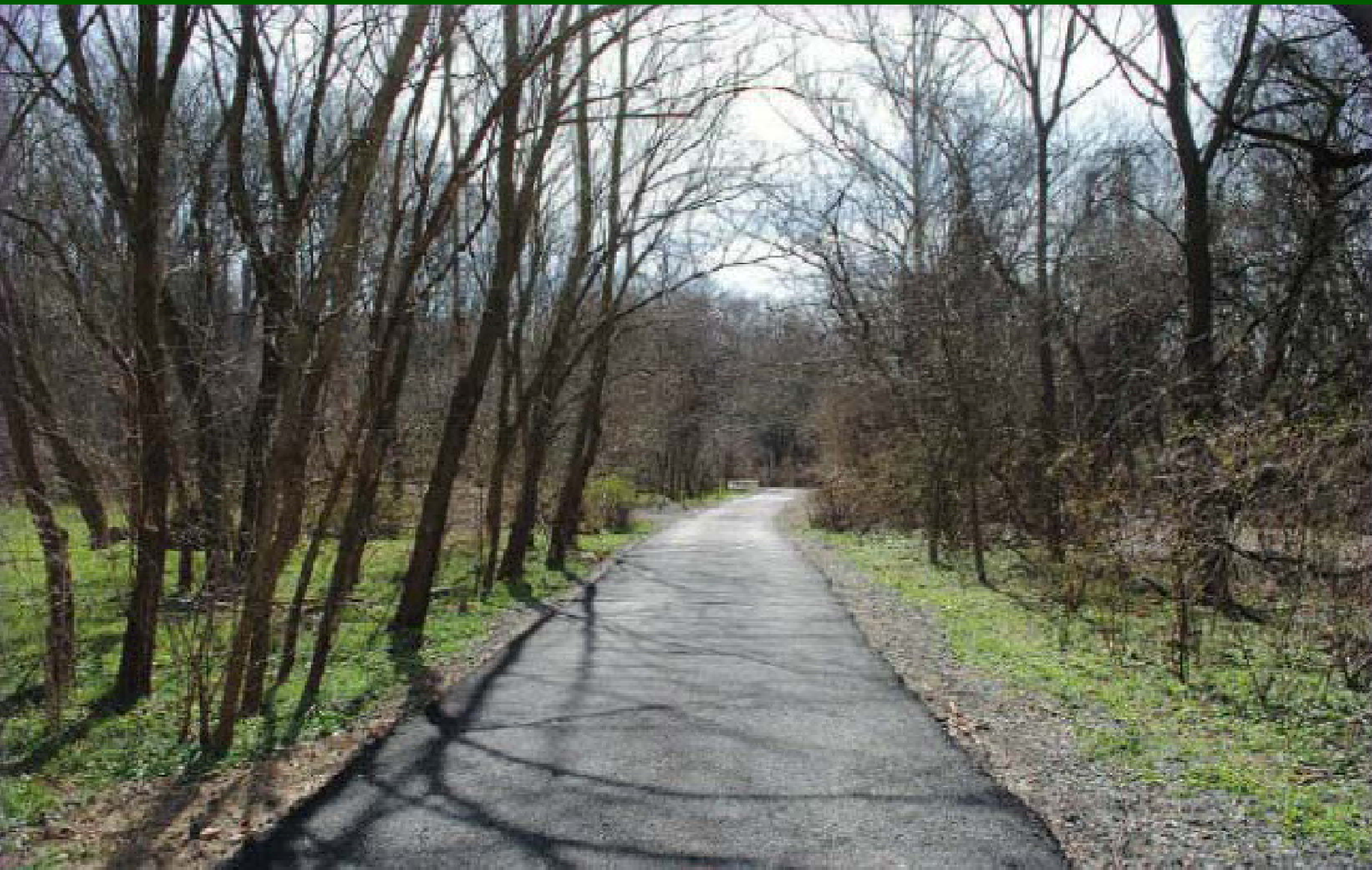




# Haverford Feasibility Study Underway

- Middle mile done in 2013
- DCNR Grant to Study the balance of 3 miles trail route within Haverford Township
- More Difficult Phase
  - » Small Stream Bridges
  - » Easements or additional bridges required
  - » Under PennDOT Bridge
  - » Identifying Phasing and Initial “Workarounds”
  - » Working to get easements











# Challenges

- Easements take time
- 1 not likely – missed opportunity to buy the property for \$225K
- Cost – 2 bridges or a narrow sidewalk path on a busy road
- Lessons Learned
  - » Buy it when you can
  - » Develop an “OFFICIAL MAP” for future acquisitions

















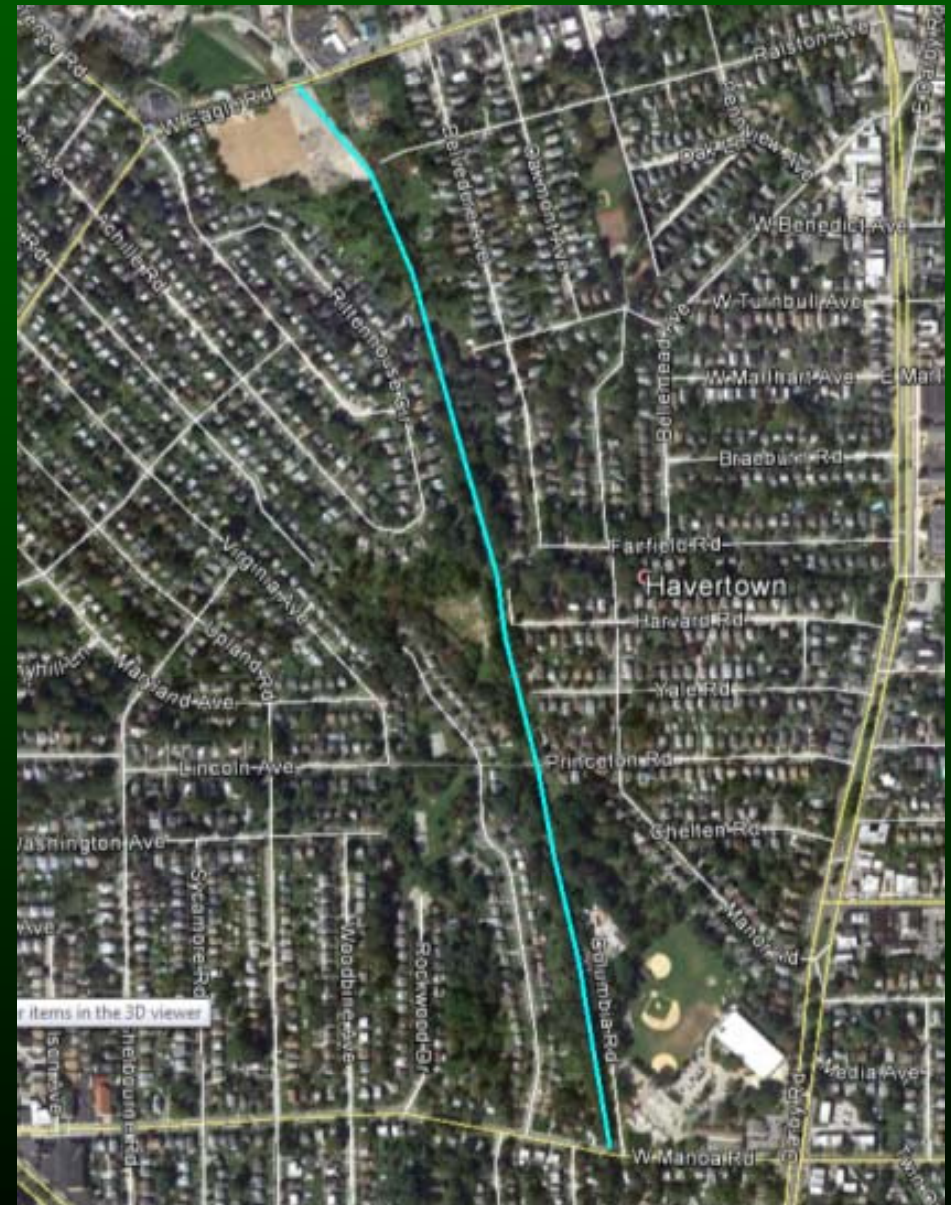
**Wow, are we at Route 1 at  
Drexeline Shopping  
Center already?**





# “Pennsy” Trail (Newtown Sq Branch)

- 2016 surfaced <1 mi connecting Manoa Rd and Eagle/YMCA Lot w/William Penn Grant
- Future grants/projects for bridge link to Llanerch
- Connection through WC Pike/Twp Line Rd may require in-street bikeway
- Also extend West to Paddock Park and beyond?





# Pennsy Trail – Ribbon Cutting





# Pennsy Trail – Chipped Manoa to Shopping Ctr





**“Pennsy” Trail**  
**“Newtown Square Branch”**

**2016 Eagle to Manoa (final completion pending)**

**Upper Darby “Naylor’s Run Trail” Study Completed**

**Another Route to Heinz or just a Short Community Resource?**

The map shows a network of trails in the Philadelphia area. A blue line represents the 'Pennsy' Trail, with a specific section in the northwest labeled 'Newtown Square Branch'. A yellow oval highlights a section of the trail passing through Upper Darby and Lansdowne, with a callout indicating a study for the 'Naylor's Run Trail' is completed. A green oval highlights a section near Havertown with a callout stating '2016 Eagle to Manoa (final completion pending)'. A large green oval in the south highlights a section near the John Heinz National Wildlife Refuge. A large teal box in the bottom left corner contains the text 'Another Route to Heinz or just a Short Community Resource?'. The map includes labels for various locations such as Newtown Square, Upper Providence Township, Springfield, Darby, and Philadelphia, as well as major roads like I-476, I-76, and I-95.

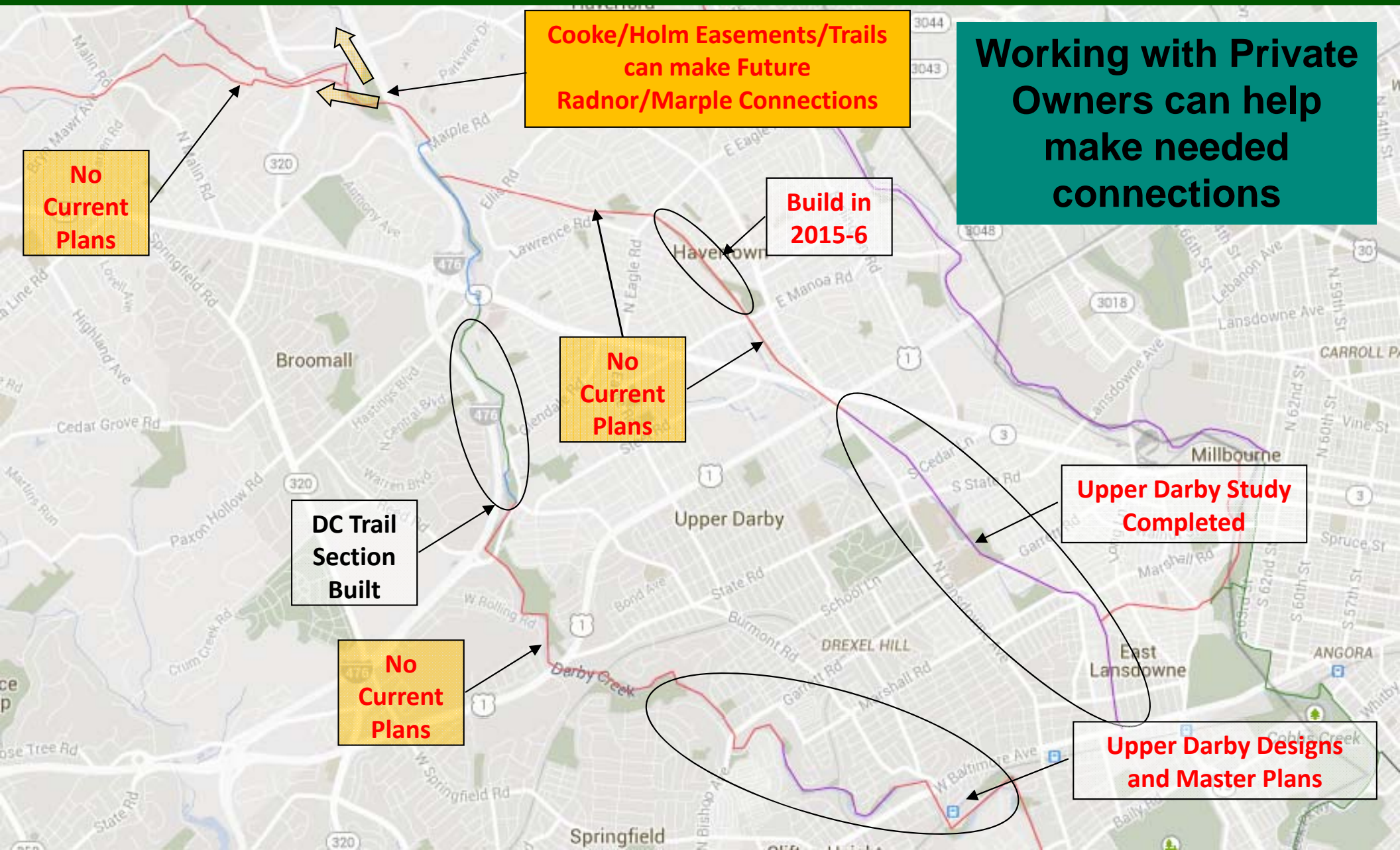
**2016 Eagle to Manoa (final completion pending)**

## Upper Darby “Naylor’s Run Trail” Study Completed

# Another Route to Heinz or just a Short Community Resource?



# The Future – Isolated “Walk in the Park” or Regional Connections?

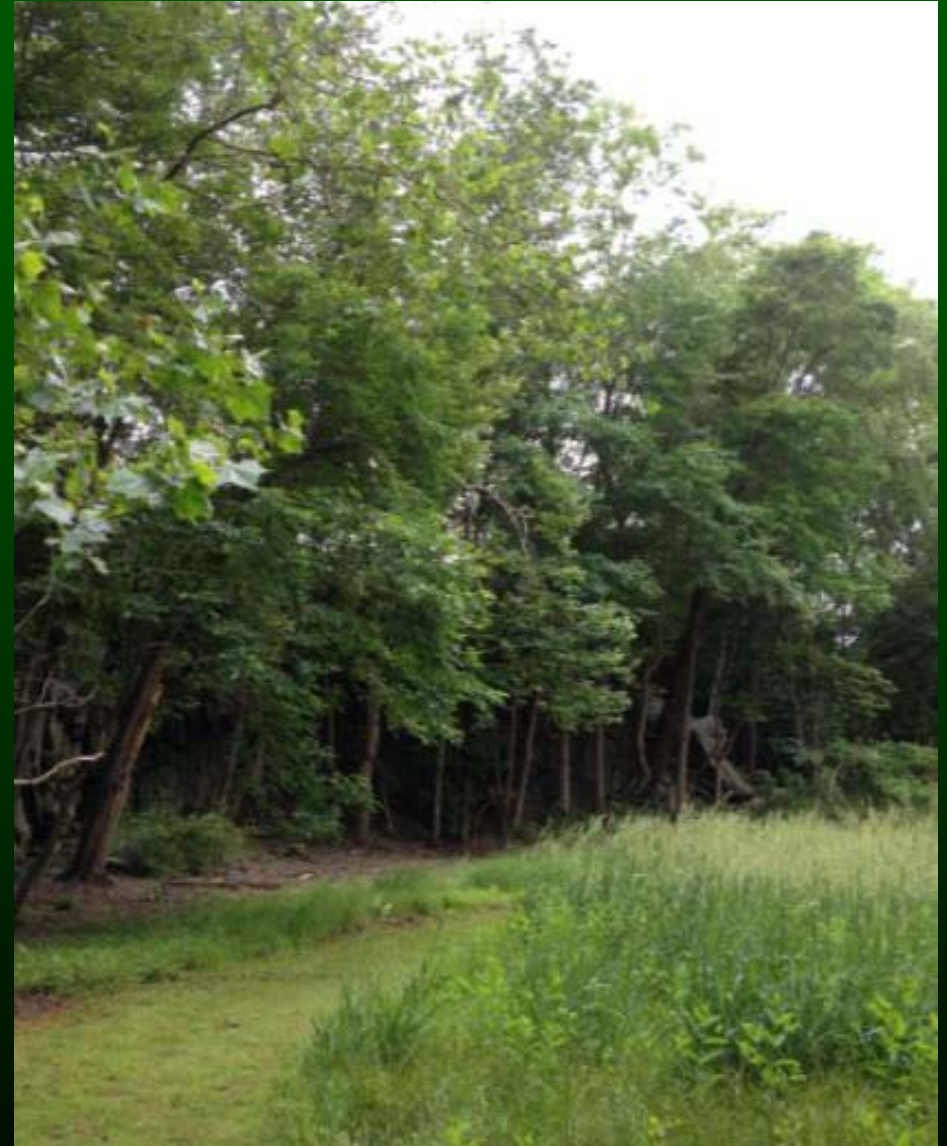




# “Cooke” Trail and Willowstreams

---

- Conservation Easement on a 37 acre tract
- Extensive efforts to restore native environment
- Generous Access for fishermen and hikers but...
- ...also a need to protect sensitive areas
- Easement for a Trail
- Groundbreaking for Haverford Township







# Willowstreams Conservation Efforts

[www.willowstreams.org](http://www.willowstreams.org)

**Ecologically significant 37-acre property  
with high quality native wetlands,  
meadow, and woodlands**



# Willowstreams Trail Under Construction

**The Public MUST appreciate the trail and  
RESPECT restrictions on accessing the  
balance of this ecologically sensitive property**



# Bike Parking Improvements

---



- Rings on Parking Meters – 2014
- Bike Parking at SEPTA stations – 2015/2016
- Two “Bike Share” locations will be installed as apart of a multi-modal streetscape project
  - HT Library on Darby Rd
  - FHT suggested Ardmore Junction Station on SEPTA R100 line



# Added to Bike Racks at Busy Ardmore Junction Station





# Safety Shoulder Striping Ardmore Ave at Morris

---





# Bike/Road Safety Improvement

---

- PennDOT shoulder striping 8 of the 11 recommended miles of State Roads in Haverford in 2014
- **Priority Improvements sought from PennDOT e.g.**
  - Darby from WC Pike - Eagle Road - Bike Lanes and “Road Diet” (reduce 4 to 2 lanes, add turning lanes)
  - WCPike W, Darby - Gilmore – 2-3 ft shoulder, narrow lanes
  - WCPike E, “Kohls” to Rt 1 – separate bike lane, 3 to 2 lanes
  - Haverford Road from Manoa to Karakung - Paint 3 ft shoulder stripes
  - Haverford Road from Karakung to Buck Lane - “Road Diet” and 3-4 ft shoulder stripes



# Bike/Road Safety Improvement

---

- Lawrence Road from Darby Creek Road to WC Pike – Side path or sidewalk
- **Widen and Install 2-4 ft shoulders (cont.)**
  - Darby from Marple to Sproul
  - Collegeville Ave from Lancaster to Darby
  - Ardmore Ave from Haverford to Ellis Rd
  - Darby Creek Road
  - Haverford Road from City Line to Manoa - “Road Diet” and 3-4 ft shoulders

**Haverford Residents – survey/back of Agenda**



# Open discussion and input (Handout)

---

- Highest Trail Priorities
- Bicycle safety hazard locations? Road upgrades? (e.g., Darby west of Marple Rd., how to get to Haverford Reserve!)
- Where is bike parking most needed?
- Pedestrian safety hazard locations (e.g., WC Pike / Lawrence Rd. no sidewalks)?
- Other needs and potential 2017 focus areas?



# Jump Right In

---

- Sign up for “Friends” Updates on-line
  - [www.havtrail.com](http://www.havtrail.com) and click on “sign up page”
  - Marple-Newtown and Upper Darby web/facebook pages
  - Bicycle Coalition of Greater Philadelphia
- Contribute – you contributions will go to work on acquisition and trail building
- Volunteer
- Generate you own trail or bicycling projects

***Get out and hike and bike!***

# Volunteer Opportunities

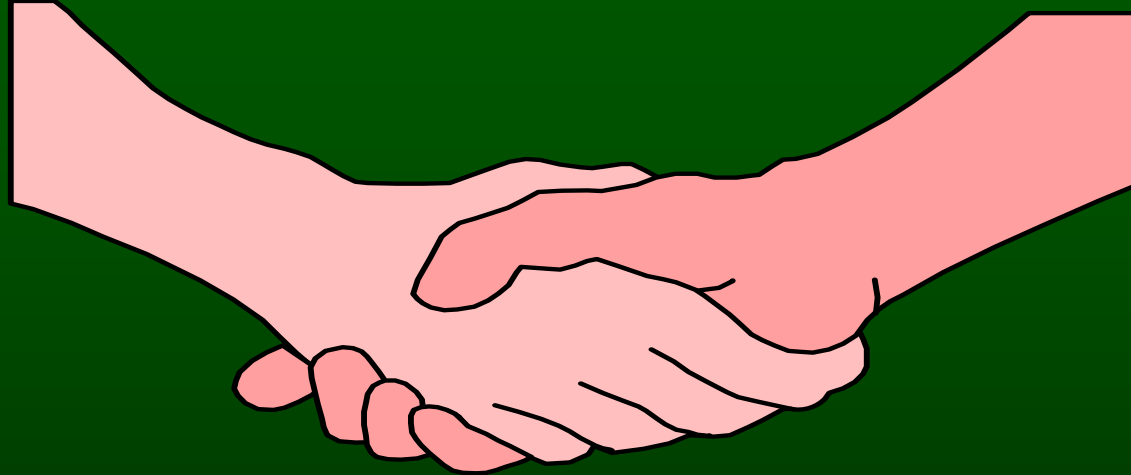
---

- Adopt a Trail – do light cleanup after storms, re-chipping
- Help on Friends projects and receive community service credit
- Many ways to help
  - » Analysis and Planning
  - » Grant Applications
  - » Outreach and Communications
  - » Lead Hikes and Rides
  - » Action – have a direct impact now!



# Our Thanks for Your Support

---



For more information, go to [www.havtrail.com](http://www.havtrail.com) or  
[www.facebook.com/havtrail/](http://www.facebook.com/havtrail/)

If you would really like to help,  
email: [mrrichkerr@gmail.com](mailto:mrrichkerr@gmail.com);  
[peter.puglionesi@appliedehs.com](mailto:peter.puglionesi@appliedehs.com)