

The background is a green-tinted photograph of a forest. A dirt path leads from the bottom left towards the center. On the right side, a large, thick tree trunk is visible, with its roots spreading out. The forest is dense with various trees and undergrowth.

# Trails in Delaware County

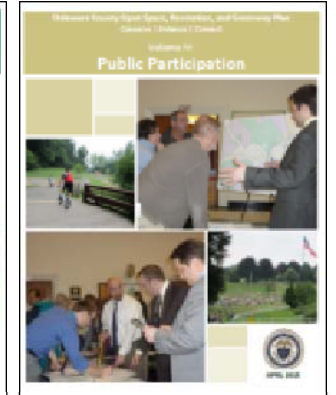
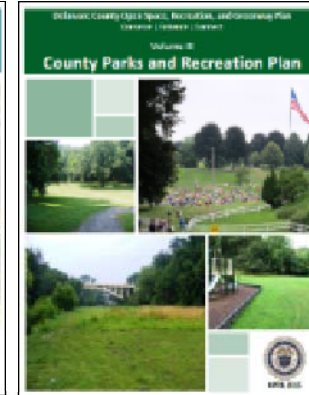
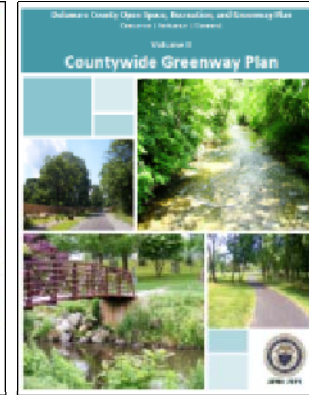
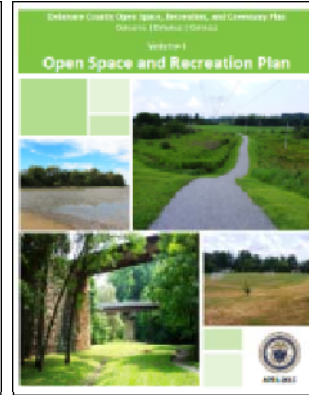
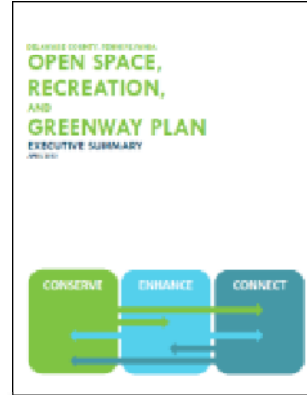
February 25, 2017



# OPEN SPACE, RECREATION, AND GREENWAY PLAN



**April 22, 2015**  
(Happy Earth Day!)



# OPEN SPACE, RECREATION, AND GREENWAY PLAN

## PRIMARY TRAIL NETWORK



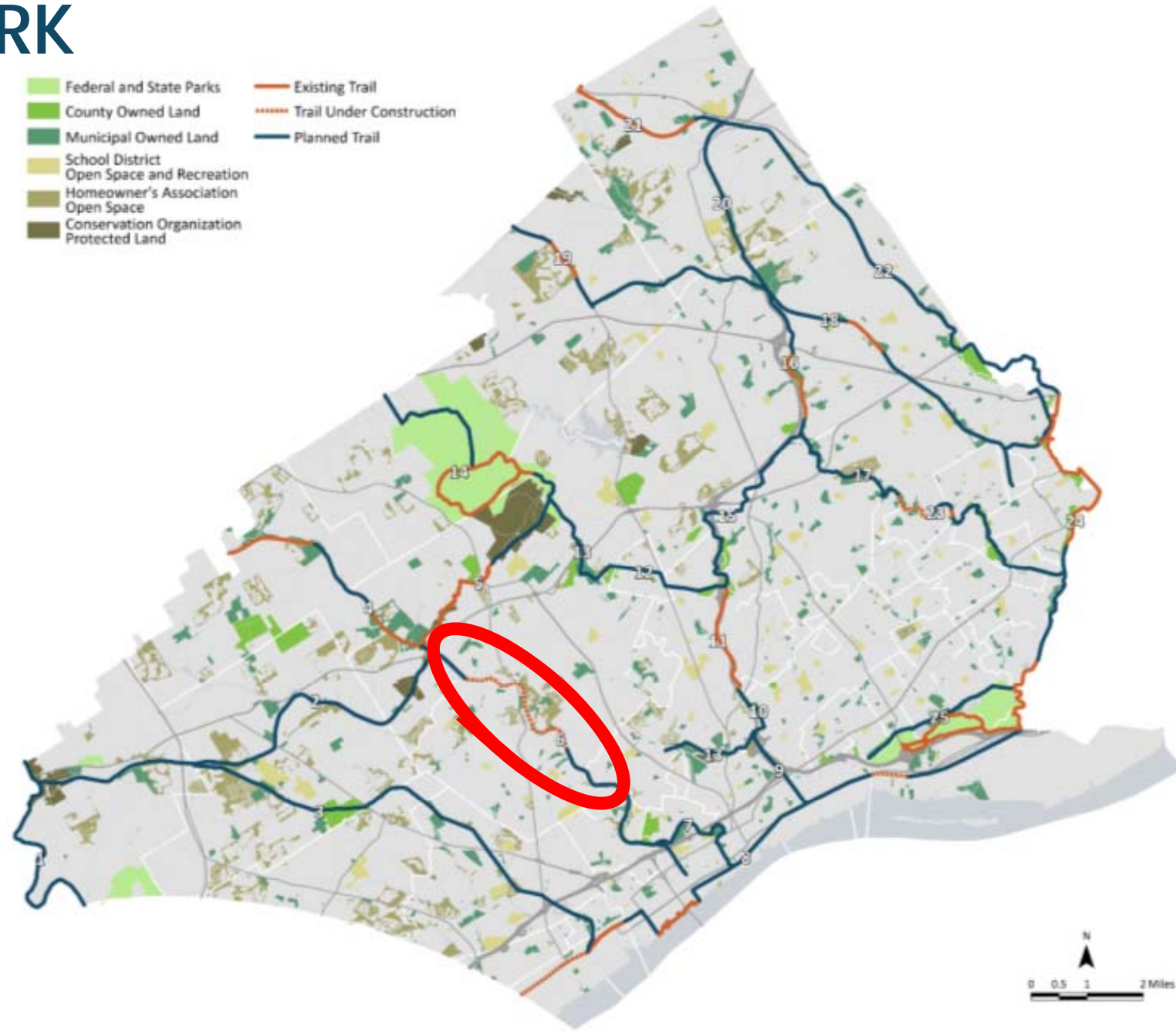
### 130 Miles of Trails

Existing: 33 Miles

Construction: 3 miles

Planned: 94 miles

Plus over 100 mile of existing local trails





# CHESTER CREEK TRAIL





# Chester Creek Trail





# OPEN SPACE, RECREATION, AND GREENWAY PLAN

## PRIMARY TRAIL NETWORK



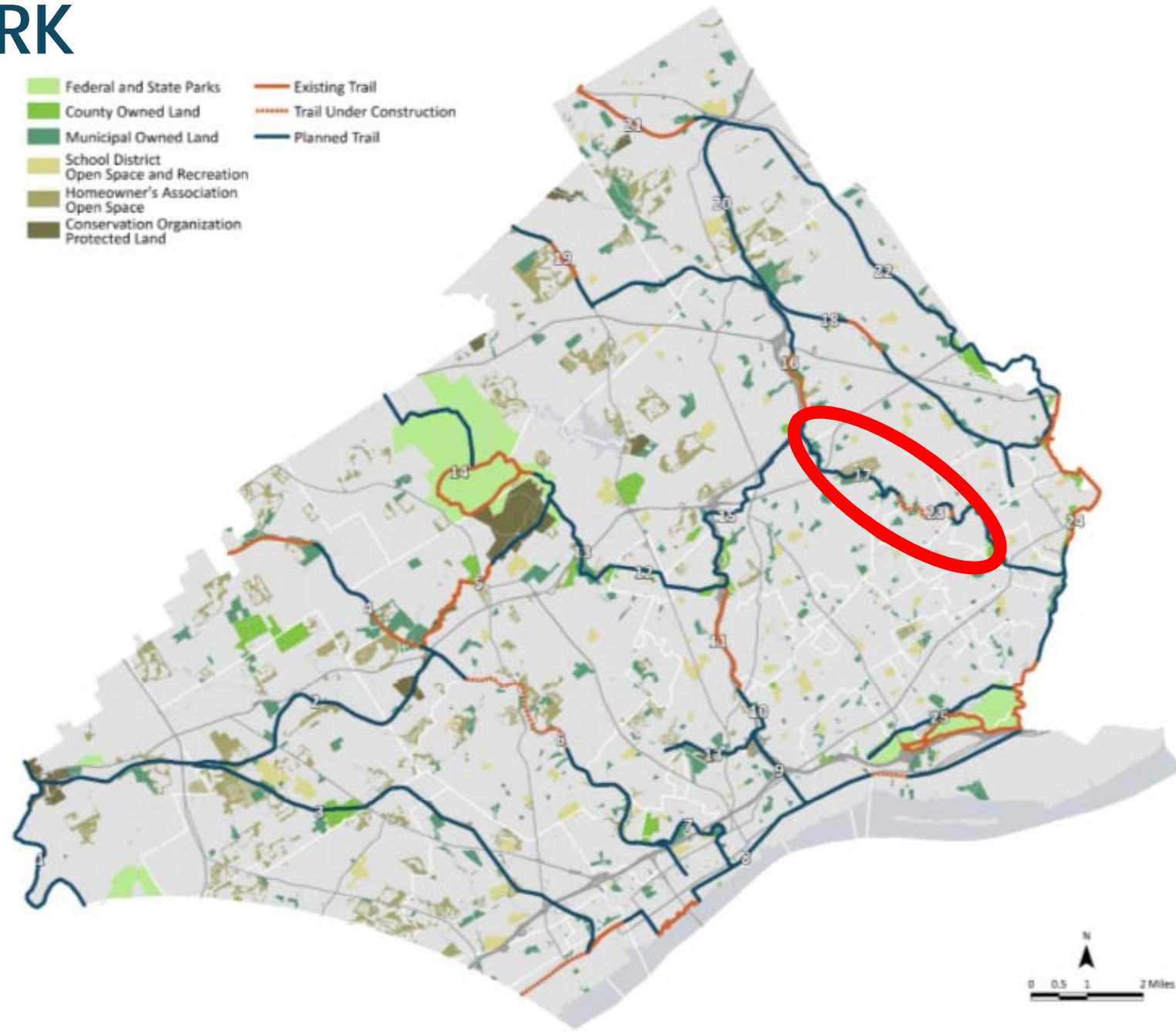
### 130 Miles of Trails

Existing: 33 Miles

Construction: 3 miles

Planned: 94 miles

Plus over 100 mile of existing local trails



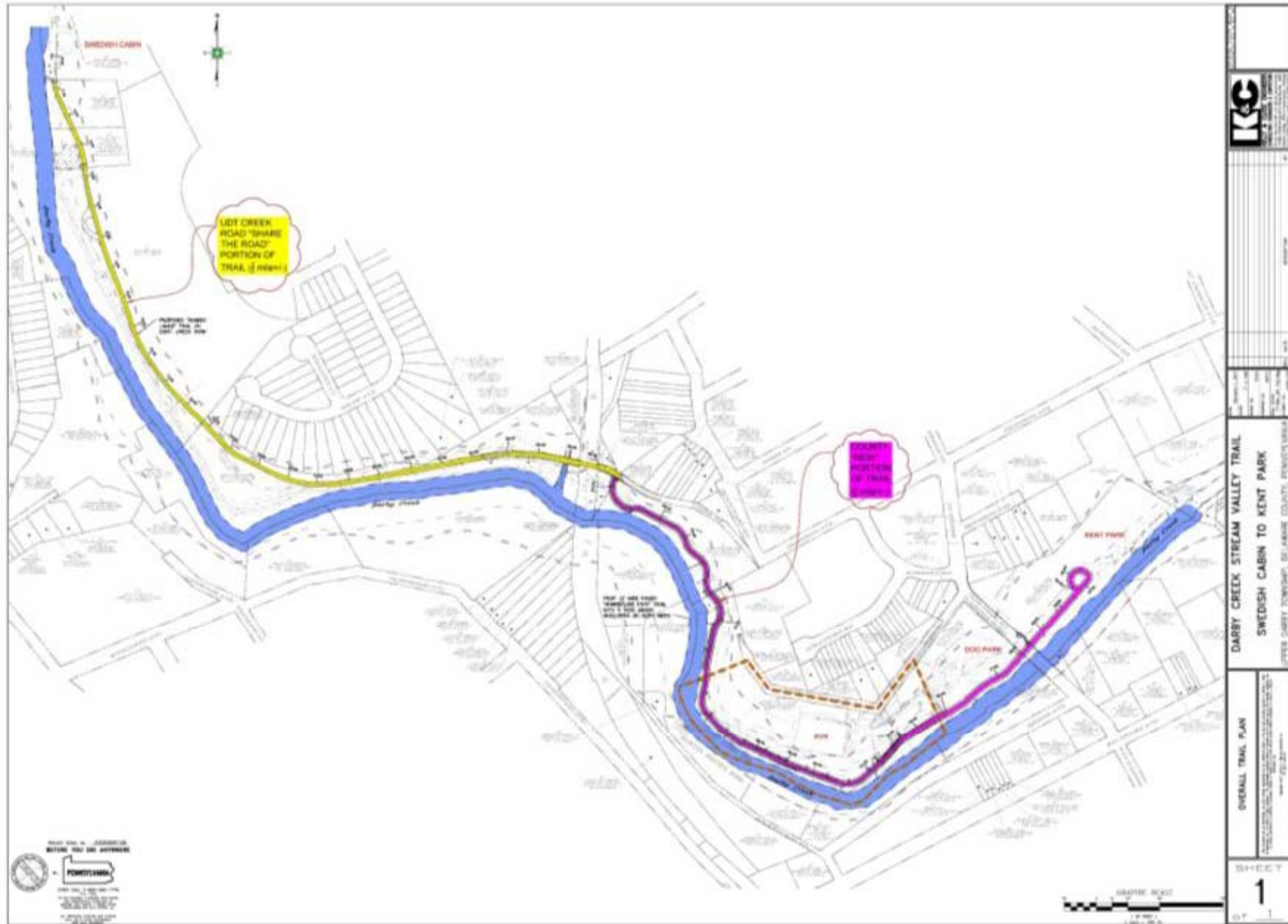


# DARBY CREEK STREAM VALLEY TRAIL





# DARBY CREEK STREAM VALLEY TRAIL





# Darby Creek Trail





# DARBY CREEK STREAM VALLEY TRAIL





# DARBY CREEK GREENWAY ACQUISITION





# Little Flower Manor Acquisition

